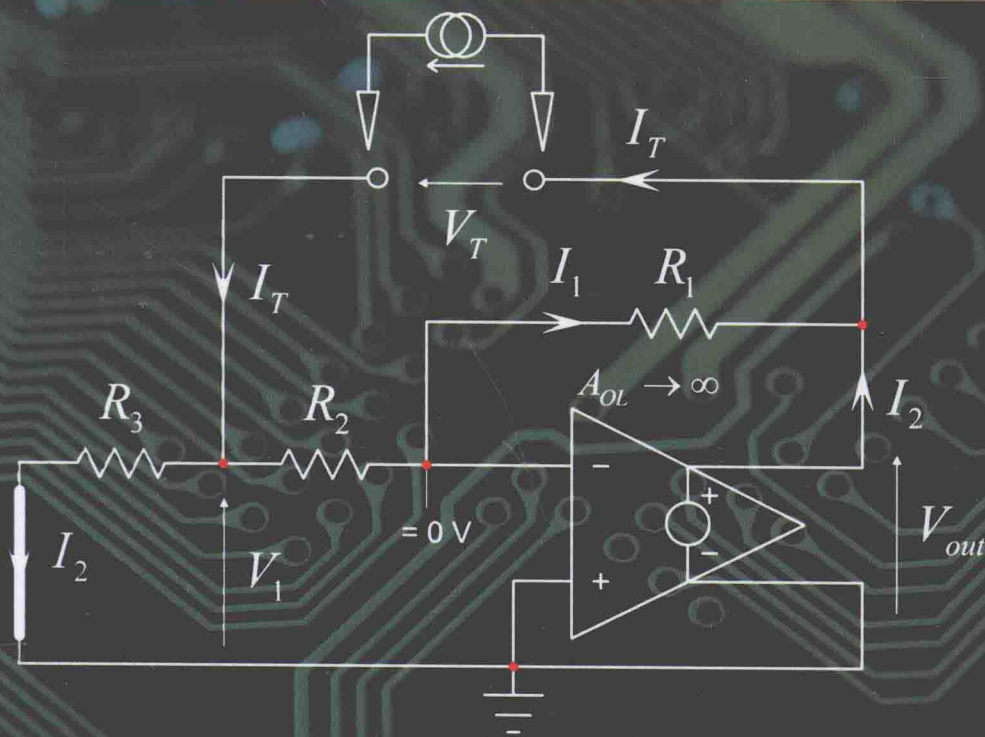


# LINEAR CIRCUIT TRANSFER FUNCTIONS



CHRISTOPHE P. BASSO

# LINEAR CIRCUIT TRANSFER FUNCTIONS

AN INTRODUCTION TO FAST  
ANALYTICAL TECHNIQUES

**Christophe P. Basso**

*ON Semiconductor, Toulouse, France*

  
**IEEE PRESS**

**WILEY**

This edition first published 2016  
© 2016 John Wiley & Sons, Ltd

*Registered office*

John Wiley & Sons Ltd, The Atrium, Southern Gate, Chichester, West Sussex, PO19 8SQ, United Kingdom

For details of our global editorial offices, for customer services and for information about how to apply for permission to reuse the copyright material in this book please see our website at [www.wiley.com](http://www.wiley.com).

The right of the author to be identified as the author of this work has been asserted in accordance with the Copyright, Designs and Patents Act 1988.

All rights reserved. No part of this publication may be reproduced, stored in a retrieval system, or transmitted, in any form or by any means, electronic, mechanical, photocopying, recording or otherwise, except as permitted by the UK Copyright, Designs and Patents Act 1988, without the prior permission of the publisher.

Wiley also publishes its books in a variety of electronic formats. Some content that appears in print may not be available in electronic books.

Designations used by companies to distinguish their products are often claimed as trademarks. All brand names and product names used in this book are trade names, service marks, trademarks or registered trademarks of their respective owners. The publisher is not associated with any product or vendor mentioned in this book.

**Limit of Liability/Disclaimer of Warranty:** While the publisher and author have used their best efforts in preparing this book, they make no representations or warranties with respect to the accuracy or completeness of the contents of this book and specifically disclaim any implied warranties of merchantability or fitness for a particular purpose. It is sold on the understanding that the publisher is not engaged in rendering professional services and neither the publisher nor the author shall be liable for damages arising herefrom. If professional advice or other expert assistance is required, the services of a competent professional should be sought

***Library of Congress Cataloging-in-Publication Data***

Names: Basso, Christophe P., author.

Title: Linear circuit transfer functions : an introduction to fast analytical techniques / Christophe Basso.

Description: Chichester, West Sussex : Hoboken, NJ : Wiley, 2016. | Includes index.

Identifiers: LCCN 2015047967 | ISBN 9781119236375 (cloth) | ISBN 9781119236351 (epub)

Subjects: LCSH: Transfer functions. | Electric circuits, Linear.

Classification: LCC TA347.T7 B37 2016 | DDC 621.3815--dc23 LC record available at <http://lccn.loc.gov/2015047967>

A catalogue record for this book is available from the British Library.

ISBN: 9781119236375

Set in 9.5/11.5 pt TimesLTStd-Roman by Thomson Digital, Noida, India  
Printed and bound in Malaysia by Vivar Printing Sdn Bhd

# About the Author

Christophe Basso is a Technical Fellow at ON Semiconductor in Toulouse, France, where he leads an application team dedicated to developing new offline PWM controller's specifications. He has originated numerous integrated circuits among which the NCP120X series has set new standards for low standby power converters.

Further to his 2008 book *Switch-Mode Power Supplies: SPICE Simulations and Practical Designs*, published by McGraw-Hill, he released a new title in 2012 with Artech House, *Designing Control Loops for Linear and Switching Power Supplies: a Tutorial Guide*. He holds 17 patents on power conversion and often publishes papers in conferences and trade magazines including How2Power and PET.

Christophe has over 20 years of power supply industry experience. Prior to joining ON Semiconductor in 1999, Christophe was an application engineer at Motorola Semiconductor in Toulouse. Before 1997, he worked at the European Synchrotron Radiation Facility in Grenoble, France, for 10 years. He holds a BSEE equivalent from the Montpellier University (France) and a MSEE from the Institut National Polytechnique of Toulouse (France). He is an IEEE Senior member.



When he is not writing, Christophe enjoys snowshoeing in the Pyrenees.

# Preface

First as a student and later as an engineer, I have always been involved in the calculation of transfer functions. When designing power electronics circuits and switch mode power supplies, I had to apply my analytical skills on passive filters. I also had to linearize active networks when I needed the control-to-output dynamic response of my converter. Methods to determine transfer functions abounded and there are numerous textbooks on the subject. I started in college with mesh-node analysis, and at some point ended up using state variables. If all paths led to the correct result, I often struggled rearranging equations to make them fit a friendly format. Matrices were useful for immediate numerical results but, when trying to extract a meaningful symbolic transfer function, I was often stuck with an intractable result. What matters with a transfer function formula is that you can immediately distinguish poles, zeros and gains without having to rework the expression. This is the idea behind the term *low-entropy*, a concept forged by Dr. Middlebrook.

Simulation gives you an idea where poles and zeros hide by interpreting the phase and magnitude plots with minimum-phase functions. However, inferring which terms really affect a pole or a zero position from a Bode plot is a different story. Fortunately, if the transfer function is written the right way, then you can immediately identify which elements contribute to the roots and assess how they impact the dynamic response. As some of these parasitics vary in production or drift with temperature, you have to counteract their effects so that reliability is preserved during the circuit's life. The typical example is when you are asked to assess the impact of a parasitic term variation on a product you have designed: if a new capacitor or a less expensive inductor is selected by the buyers, will production be affected? Is there a chance that stability will be jeopardized in some operating conditions? Implementing the classical analysis method will surely deliver a result describing the considered circuit, but extracting the information you need from the final expression is unlikely to happen if the equations you have are disorganized or in a *high-entropy* form.

This is where Fast Analytical Circuit Techniques (FACTs) come into play. The acronym was formed by Dr. Vatché Vorperian, who formalized the technique you are about to discover here. Before him, Dr. Middlebrook published numerous papers and lectured on his Extra-Element Theorem (EET), later generalized to the  $N$  extra-element theorem by one of his alumni. Since Hendrik Bode in the 40's, authors have come up with techniques aiming to simplify linear circuit analysis through various approaches. All of them were geared towards determining the transfer function at a pace quicker than what traditional methods could provide. Unfortunately, while traveling and visiting customers world-wide, I have found that, despite all the available documentation, FACTs were rarely adopted by engineers or students. When describing examples in my seminars and showing the method at work in small-signal analysis, I could sense interest from the audience through questions and comments. However, during the discussions I had later on with some of the engineers or students, they confessed that they tried to acquire the skill but gave up because of the

intimidating mathematical formalism and the complexity of the examples. If one needs to be rigorous when tackling electrical analysis, perhaps a different approach and pace could make people feel at ease when learning the method. This is what I strived to do with this new book, modestly shedding a different light on the subject by progressing with simple-to-understand examples and clear explanations. As a student, I too struggled to apply these fast analytical circuits techniques to real-world problems; as such, I identified the obstacles and worked around them with success. Thus, the seeds for this book were sown.

This book consists of five chapters. The first chapter is a general introduction to the technique, explaining what transfer functions are and how time constants characterize a circuit. The second chapter digs into transfer function definitions and polynomial forms, introducing the low- $Q$  approximation, and how to organize 2<sup>nd</sup> and 3<sup>rd</sup>-order denominators or numerators. The third chapter uses the superposition theorem to gently introduce the extra-element theorem. Numerous examples are given to illustrate its usage in different 1<sup>st</sup>-order configurations. The fourth chapter deals with the 2-extra element theorem, generalized and applied to 2<sup>nd</sup>-order networks. Numerous examples illustrated with Mathcad® and SPICE punctuate the explanations. Finally, the fifth chapter tackles 3<sup>rd</sup>- and 4<sup>th</sup>-order circuits, all illustrated with examples. Each chapter ends with 10 fully documented problems. There is no secret; mastering a technique requires patience and practice, and I encourage you to test what you have learned after each chapter through these problems.

I have adopted the same casual writing style already used in my previous books, as readers' comments show that the way I present things better explains complex matters. Please let me know if my approach still applies here and if you enjoy reading this new book. As usual, feel free to send me your comments or any typos you may find at [cbasso@wanadoo.fr](mailto:cbasso@wanadoo.fr). I will maintain an errata list in my personal webpage as I did for the previous books (<http://cbasso.pagesperso-orange.fr/Spice.htm>). Thank you, and have fun determining transfer functions!

Christophe Basso  
May 2015

# Acknowledgement

A book like this one could not have been written and published without the help of many contributing friends. My warmest thanks and love first go to my sweet wife Anne who endured my ups and downs when determining some of the book transfer functions: equations time is over and we can now enjoy the long and warm evenings of summer to come!

I was fortunate to share my work with my ON Semiconductor colleagues and friends who played a crucial role in reviewing my pages and challenging the method. Stéphanie Cannenterre reviewed and practiced numerous book exercises. She now masters the method: well done! Dr. José Capilla raced with me several times to determine a transfer function with his Driving Point Impedance method and I recognize his skills in doing so. Special thanks go to my friend Joël Turchi with whom I spent endless hours debating the method or discussing the validity of an equation. Merci Joël for your kindness and invaluable support for this book!

Two people did also accompany me from the beginning of the writing process. Mon ami Canadien Alain Laprade from ON Semiconductor in East Greenwich who developed an addicted relationship to the FACTs and kindly reviewed all my work. Monsieur Feucht from Innovatia did also a tremendous work in correcting my pages but also kindly polished my English. I am not exactly a novelist and cannot hide my French origins Dennis!

I want to warmly thank the following reviewers for their kind help in reading my pages during the 2015 summer: Frank Wiedmann (Rhode & Schwarz), Thierry Bordignon, Doug Osterhout (both are with ON Semiconductor), Tomas Gubek – děkuji! (FEI), Didier Balocco (Fairchild), Jochen Verbrughe, Bart Moeneclaey (both are with Ghent University), Bruno Allard (INSA Lyon), Vatché Vorpérian (JPL), Luc Lasne (Bordeaux University) and Garrett Neaves (Freescale Semiconductor).

Last but not least, I would like to thank Peter Mitchell at Wiley & Sons UK for giving me the opportunity to publish my work.

# Contents

<b>About the Author</b>	<b>ix</b>
<b>Preface</b>	<b>xi</b>
<b>Acknowledgement</b>	<b>xiii</b>
<b>1 Electrical Analysis – Terminology and Theorems</b>	<b>1</b>
1.1 Transfer Functions, an Informal Approach	1
1.1.1 <i>Input and Output Ports</i>	3
1.1.2 <i>Different Types of Transfer Function</i>	6
1.2 The Few Tools and Theorems You Did Not Forget . . .	11
1.2.1 <i>The Voltage Divider</i>	11
1.2.2 <i>The Current Divider</i>	12
1.2.3 <i>Thévenin's Theorem at Work</i>	14
1.2.4 <i>Norton's Theorem at Work</i>	19
1.3 What Should I Retain from this Chapter?	25
1.4 Appendix 1A – Finding Output Impedance/Resistance	26
1.5 Appendix 1B – Problems	37
Answers	39
<b>2 Transfer Functions</b>	<b>41</b>
2.1 Linear Systems	41
2.1.1 <i>A Linear Time-invariant System</i>	43
2.1.2 <i>The Need for Linearization</i>	43
2.2 Time Constants	44
2.2.1 <i>Time Constant Involving an Inductor</i>	47
2.3 Transfer Functions	49
2.3.1 <i>Low-entropy Expressions</i>	54
2.3.2 <i>Higher Order Expressions</i>	59
2.3.3 <i>Second-order Polynomial Forms</i>	60
2.3.4 <i>Low-Q Approximation for a 2<sup>nd</sup>-order Polynomial</i>	62
2.3.5 <i>Approximation for a 3<sup>rd</sup>-order Polynomial</i>	68
2.3.6 <i>How to Determine the Order of the System?</i>	69
2.3.7 <i>Zeros in the Network</i>	76
2.4 First Step Towards a Generalized 1 <sup>st</sup> -order Transfer Function	78
2.4.1 <i>Solving 1<sup>st</sup>-order Circuits with Ease, Three Examples</i>	82



2.4.2	<i>Obtaining the Zero with the Null Double Injection</i>	89
2.4.3	<i>Checking Zeros Obtained in Null Double Injection with SPICE</i>	94
2.4.4	<i>Network Excitation</i>	95
2.5	What Should I Retain from this Chapter?	100
	References	101
2.6	Appendix 2A – Problems	102
	Answers	105
<b>3</b>	<b>Superposition and the Extra Element Theorem</b>	<b>116</b>
3.1	The Superposition Theorem	116
3.1.1	<i>A Two-input/Two-output System</i>	120
3.2	The Extra Element Theorem	126
3.2.1	<i>The EET at Work on Simple Circuits</i>	130
3.2.2	<i>The EET at Work – Example 2</i>	132
3.2.3	<i>The EET at Work – Example 3</i>	137
3.2.4	<i>The EET at Work – Example 4</i>	138
3.2.5	<i>The EET at Work – Example 5</i>	140
3.2.6	<i>The EET at Work – Example 6</i>	146
3.2.7	<i>Inverted Pole and Zero Notation</i>	150
3.3	A Generalized Transfer Function for 1 <sup>st</sup> -order Systems	153
3.3.1	<i>Generalized Transfer Function – Example 1</i>	156
3.3.2	<i>Generalized Transfer Function – Example 2</i>	159
3.3.3	<i>Generalized Transfer Function – Example 3</i>	163
3.3.4	<i>Generalized Transfer Function – Example 4</i>	170
3.3.5	<i>Generalized Transfer Function – Example 5</i>	174
3.4	Further Reading	180
3.5	What Should I Retain from this Chapter?	180
	References	182
3.6	Appendix 3A – Problems	183
	Answers	185
	References	218
<b>4</b>	<b>Second-order Transfer Functions</b>	<b>219</b>
4.1	Applying the Extra Element Theorem Twice	219
4.1.1	<i>Low-entropy 2<sup>nd</sup>-order Expressions</i>	227
4.1.2	<i>Determining the Zero Positions</i>	231
4.1.3	<i>Rearranging and Plotting Expressions</i>	233
4.1.4	<i>Example 1 – A Low-Pass Filter</i>	235
4.1.5	<i>Example 2 – A Two-capacitor Filter</i>	241
4.1.6	<i>Example 3 – A Two-capacitor Band-stop Filter</i>	245
4.1.7	<i>Example 4 – An LC Notch Filter</i>	248
4.2	A Generalized Transfer Function for 2 <sup>nd</sup> -Order Systems	255
4.2.1	<i>Inferring the Presence of Zeros in the Circuit</i>	256
4.2.2	<i>Generalized 2<sup>nd</sup>-order Transfer Function – Example 1</i>	257
4.2.3	<i>Generalized 2<sup>nd</sup>-order Transfer Function – Example 2</i>	262
4.2.4	<i>Generalized 2<sup>nd</sup>-order Transfer Function – Example 3</i>	266
4.2.5	<i>Generalized 2<sup>nd</sup>-order Transfer Function – Example 4</i>	273

4.3	What Should I Retain from this Chapter ?	277
	References	279
4.4	Appendix 4A – Problems	279
	Answers	282
	References	311
<b>5</b>	<b><math>N^{\text{th}}</math>-order Transfer Functions</b>	<b>312</b>
5.1	From the 2EET to the NEET	312
5.1.1	<i>3<sup>rd</sup>-order Transfer Function Example</i>	317
5.1.2	<i>Transfer Functions with Zeros</i>	320
5.1.3	<i>A Generalized <math>N^{\text{th}}</math>-order Transfer Function</i>	327
5.2	Five High-order Transfer Functions Examples	335
5.2.1	<i>Example 2: A 3<sup>rd</sup>-order Active Notch Circuit</i>	341
5.2.2	<i>Example 3: A 4<sup>th</sup>-order LC Passive Filter</i>	349
5.2.3	<i>Example 4: A 4<sup>th</sup>-order Band-pass Active Filter</i>	355
5.2.4	<i>Example 5: A 3<sup>rd</sup>-order Low-pass Active GIC Filter</i>	368
5.3	What Should I Retain from this Chapter ?	383
	References	385
5.5	Appendix 5A – Problems	385
	Answers	388
	References	431
	<b>Conclusion</b>	<b>433</b>
	<b>Glossary of Terms</b>	<b>435</b>
	<b>Index</b>	<b>439</b>

# 1

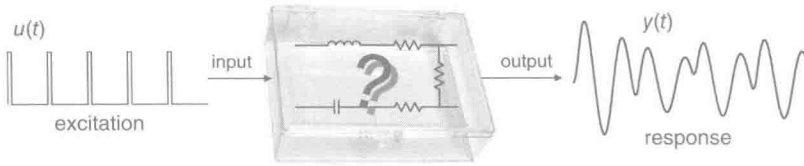
## Electrical Analysis – Terminology and Theorems

This first chapter is an introduction to some of the basic definitions and terms you must understand in order to perform electrical analysis with efficiency and speed. By electrical analysis, I imply finding the various relationships that characterize a particular electrical network. To excel in this field, as in any job, you need to master a few tools. Obviously, they are innumerable and I am sure you have learned a plethora of theorems during your student life. Some names now seem distant simply because you never had a chance to exercise them. Or you actually did but implementation was so obscure and complex that you left quite a few of them aside. This situation often happens in an engineer's life where real-case experience helps clean up what you have learned at school to only retain techniques that worked well for you. Sometimes, when what you know fails to deliver the result, it is a good opportunity to learn a new procedure, better suited to solve your current case. In this chapter, I will review some of the founding theorems that I extensively use in the examples throughout this book. However, before tackling definitions and examples, let us first understand what the term *transfer function* designates.

### 1.1 Transfer Functions, an Informal Approach

Assume you are in the laboratory testing a circuit encapsulated in a box featuring two connectors: one for the input, the second for the output. You do not know what is inside the box, despite the transparent case in the picture! You now inject a signal with a function generator to the input connector and observe the output waveform with an oscilloscope. Using the right terminology, you *drive* the circuit input and observe its *response* to the stimulus. The input waveform represents the *excitation* denoted  $u$  and it generates a *response* denoted  $y$ . In other words, the excitation variable propagates through the box, undergoes changes in phase, amplitude, perhaps induces distortion etc. and the oscilloscope reproduces the response on its screen.

The waveform displayed by the oscilloscope is a *time-domain* graph in which the horizontal axis  $x$  is graduated in seconds while the vertical axis  $y$  indicates the signal *amplitude* (positive or negative). Its dimension depends on the observed variable (volts, amperes and so on). The input waveform is denoted in lower case as it is an *instantaneous* signal, observed at a time – the *instant*  $t - u(t)$ . A similar notation applies to the output signal,  $y(t)$ . In Figure 1.1, you see a low duty ratio square-wave injected in the box engendering a rather distorted waveform on the output.



**Figure 1.1** A black box featuring an input and an output signal. What is the relationship linking output and input waveforms?

This ringing signal tells us that the box could associate resonant elements, probably capacitors and inductors but not much more than that. If we change the excitation, what type of shape will we obtain? Knowing what is inside the box will let us predict its response to various types of excitation signals.

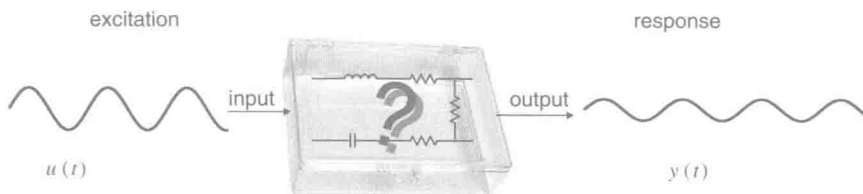
There are several available ways to characterize an electrical linear circuit. One of them is called *harmonic analysis*. The input signal is replaced by a sinusoidal waveform and you observe how the stimulus propagates through the box to form the response. This is shown in Figure 1.2:

The excitation level must be of reasonable amplitude – understand *small* – so that the response signal is not distorted. The input signal dc bias must also be set accounting for the physical constraints imposed by the active circuit so that upper- or lower-rail saturation is avoided. In other words, the box internal circuitry is not *overdriven* and remains *linear* during the analysis. Linearity is confirmed if the output signal is sinusoidal with the same frequency as the input sine and only varies in amplitude and phase while you ac-sweep the network. This is a so-called *small-signal* analysis. In the Laplace domain, you perform such harmonic analysis when you set  $s = j\omega$  in which  $\omega = 2\pi f$  represents the angular frequency expressed in radians per seconds (rads/s). Laplace analysis with  $s = j\omega$  applies to linear circuits only.

Should you increase the input signal amplitude or change the operating bias point, slewing or clipping may happen. In this case, you explore the box *large-signal* or *nonlinear* response. This is a characterization different than the small-signal approach and it offers another insight into the circuit operation. Let us keep linear and once the right input amplitude is found, i.e. a signal of comfortable amplitude is observed on the oscilloscope screen, the frequency is varied step by step while output amplitude/phase couples are recorded in an array. At each frequency point  $f$ , we store the ratio of the response amplitude  $Y(f)$  in volts to the excitation amplitude  $U(f)$  in volts also. At each frequency point  $f$ , we save the phase information linking both input and output waveforms. As  $U$  and  $Y$  are complex variables affected by a magnitude and a phase, we can write:

$$A_v(s) = \frac{Y(s)}{U(s)} \quad (1.1)$$

$A_v$  represents a *transfer function*, a mathematical relationship linking a response signal  $Y$  to an excitation signal  $U$ . Please note that the excitation signal  $U$  resides in the transfer function



**Figure 1.2** The black box is now driven by a sinusoidal stimulus for a small-signal analysis.

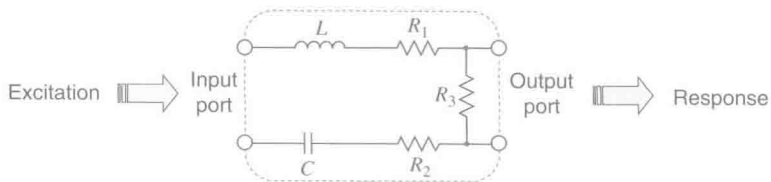
denominator while the response  $Y$  sits in the numerator. It will always be this way throughout the book.

The transfer function is a complex variable characterized by a magnitude noted  $|A_v(f)|$  and an argument,  $\angle A_v(f)$  also noted  $\arg A_v(f)$ . The ratios  $Y(f)/U(f)$  we have stored correspond to the transfer function magnitude (also called *modulus*) observed at a frequency  $f$  while the phase difference between  $Y$  and  $U$  represents the transfer function argument or phase at the considered frequency. The transfer function magnitude dimension depends on the observed variables as we will later see. Here, because volts are involved for both variables, the transfer function magnitude is *dimensionless* or *unitless*. Furthermore,  $|A_v|$  can only be greater than or equal to zero. It is what makes the difference between an amplitude which can take on any value, positive, null or negative and a magnitude which can only be zero or positive. If it is 0, there is no output signal. If  $|A_v|$  is less than 1, we talk about *attenuation*. Now, if  $|A_v|$  is greater than 1, it is designated as a *gain*. If the magnitude can only be a null or positive number, what about a gain of  $-2$  then? It simply characterizes a stage offering a gain of 2, lagging or leading the excitation signal phase by  $180^\circ$ .

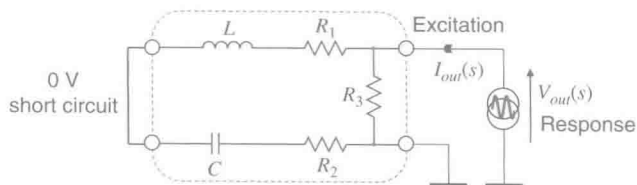
### 1.1.1 Input and Output Ports

It is convenient to represent our box as a two-port circuit. A *port* is a pair of connections that can input or output signals such as voltage and current. Figure 1.3 shows an illustration of this principle where you see two connecting ports, one input and one output.

Under some conditions, a port can take on the input and output roles at the same time. Imagine you want to measure the output impedance of the box. To realize this measurement, you classically implement Figure 1.4 where a current across the output terminals is injected while the voltage across the same terminals is observed. This is what is called a *single injection*, i.e. one stimulus and one response. In this experiment, the box input port is shorted (see Appendix 1A). The excitation variable is the current  $I_{out}(s)$  injected into the port while the response is the voltage  $V_{out}(s)$  collected across the port's terminals. The output impedance  $Z$  obtained from the ratio of the port voltage to the injected



**Figure 1.3** The input port receives the excitation signal while the output port delivers the response.



**Figure 1.4** A port can be both an input and an output at the same time. Here, an output impedance measurement.

current is a transfer function. It has the dimension of an impedance expressed in ohms:

$$Z_{out}(s) = \frac{V_{out}(s)}{I_{out}(s)} \quad (1.2)$$

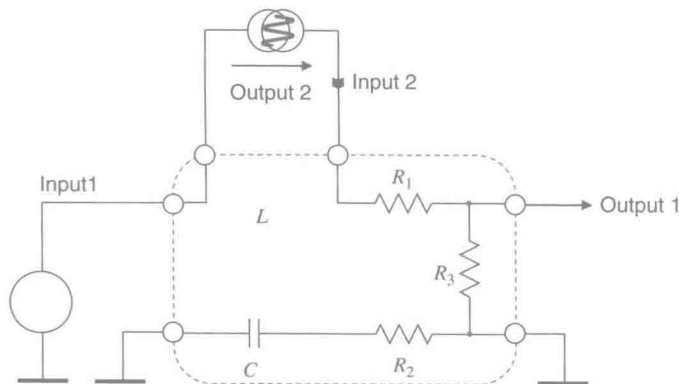
$I_{out}$ , the excitation signal lies in the denominator while the response,  $V_{out}$ , stands in the numerator. We will come back on this important peculiarity.

If input and output connectors are fixed, physical ports, which let you respectively inject and observe signals, nothing prevents one from creating other observation ports as needed. Simply remove a resistor, a capacitor or an inductor and its connecting points become a new port. This port can now be used as a new input stimulus or as an output variable you want to observe. As already mentioned, this newly created port can also play the role of an input and output port at the same time. In that case, the box originally featuring one input and one output, becomes a two-input/two-output system as illustrated in Figure 1.5 in which the inductor has been removed. Using adequate terminology, we analyze the system by performing a *double-injection*: two stimuli – inputs 1 and 2 – giving two responses, outputs 1 and 2.

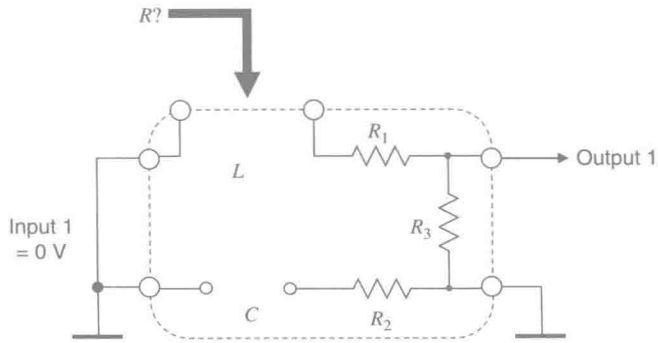
In this example, the voltage across the removed inductor terminals is the response while the injected current is the excitation signal. By dividing the port voltage by the injected current, we have the resistance offered by the port terminals when the element initially connected has been removed. In other words, we ‘look’ at the resistance offered by the inductor port as shown in Figure 1.6 where the symbol  $R?$  and the arrow imply this exercise. Expressed in a different manner, we find the equivalent *output resistance* exhibited by the port when ‘driving’ the inductor, hence the name *driving point* resistance or *driving point impedance* abbreviated as DPI. Combining resistance and inductance gives us a time constant  $\tau$  (‘tau’) associated with this inductive element:

$$\tau = \frac{L}{R} \quad (1.3)$$

To conduct this exercise and find the resistance  $R$ , you can directly look at the sketch and infer the resistive series-parallel arrangement without solving a single equation. This exercise is called *network inspection*: you simply observe the network in certain conditions (for instance in dc, or when  $V_{in}$  is set to 0) and find resistance values by observing how components are connected together. For example, in Figure 1.6, what resistance do you ‘see’ looking into the inductor port while capacitor  $C$  is



**Figure 1.5** If you remove a component from this circuit, its connections become a connecting port. You can bias this port and consider it as a new input, or as a new output, or both of them at the same time.



**Figure 1.6** Removing the inductor lets you look at the port output resistance that drives the inductor. Associating the port resistance and the inductance leads to a time constant. Here, the resistance seen at the inductor port is  $R_1 + R_3$ .

disconnected for the exercise?  $R_1$  appears first and then  $R_3$  in series goes to ground and returns to the inductor left terminal via the shorted input source.  $R_2$  is open and plays no role:

$$R = R_1 + R_3 \quad (1.4)$$

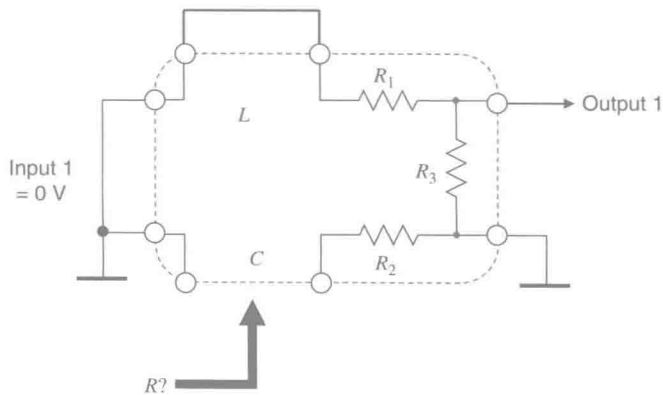
Applying (1.3) with (1.4) gives the definition for the time constant involving  $L$ :

$$\tau_1 = \frac{L}{R_1 + R_3} \quad (1.5)$$

A similar exercise can be conducted with the capacitor to also unveil the resistance  $R$  that drives this element. In this case, the time constant associated with the capacitance is simply:

$$\tau = RC \quad (1.6)$$

Assuming a shorted inductance in this particular illustration, what resistance value do you see in Figure 1.7 when looking into the capacitor port? The left terminal is grounded while the second



**Figure 1.7** Removing the capacitor lets you conduct a similar exercise to unveil the time constant associated with this component. In this case, the resistance seen at the capacitor port is  $R_2$ .

terminal also goes to ground via  $R_2$ .  $R_1$  and  $R_3$  play no role since their series combination goes from one ground to the other one. Therefore:

$$R = R_2 \quad (1.7)$$

The time constant involving the capacitor is simply:

$$\tau_2 = R_2 C \quad (1.8)$$

We have two storage elements,  $C$  and  $L$ , and there are two time constants. For each storage element, there is an associated time constant.

Rather than looking into a capacitive or an inductive port, we could also remove a resistor and define what resistance drives it, the exercise remains the same. Sometimes, looking into the port to ‘see’ the resistance is not as straightforward, especially when controlled sources are involved. In this case, you need to add a test current generator as in Figure 1.5 and define the voltage generated across the considered terminals. The resistance offered by the port being the port voltage divided by the test current generator. This test generator will later be labeled  $I_T$  and the voltage across its terminals  $V_T$ .

What we just described is part of the technique foundations we will later describe: find resistances offered across the connecting terminals of resistive, capacitive or inductive elements once they have been temporarily removed from the circuit under certain conditions. Breaking a complex passive or active circuit into a succession of *simple* configurations where time constants are unveiled will help us characterize a network featuring poles and zeros. The Extra Element Theorem (EET) and later, the  $n$  Extra Element Theorem ( $n$ EET), make an extensive usage of these methods and it is important to understand this prerequisite. Appendix 1A will refresh our memory regarding available methods to derive output impedances while Appendix 1B collects several examples to let you exercise your skills at finding these resistances.

### 1.1.2 Different Types of Transfer Function

Depending where you inject the excitation and where you observe the response, you can define six types of transfer functions as detailed in [1]. For the sake of simplicity, input and output ports are ground-referenced but could also be differential types. The first one, is the voltage gain  $A_v$ , already encountered in the above lines and it appears in Figure 1.8 together with an operational amplifier (op amp) in an inverting configuration. In all the following illustrations, the op amp is considered a perfect element (infinite open-loop gain, infinite bandwidth, zero output and infinite input impedances). You sweep the input voltage with a sinusoid, the stimulus, and observe the voltage at the op amp output, the response. In Laplace notation, you compute  $A_v$  as:

$$A_v(s) = \frac{V_{out}(s)}{V_{in}(s)} \quad (1.9)$$

$A_v$  is dimensionless, sometimes expressed in  $[V]/[V]$ .

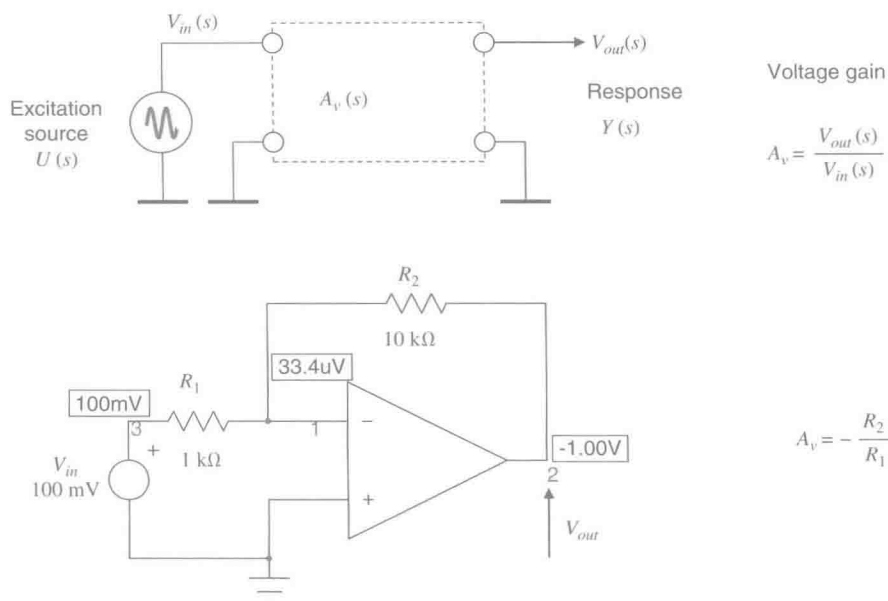
The second one is the current gain,  $A_i$ , this time involving input and output currents as shown in Figure 1.9. The excitation signal is now the input current  $I_{in}$  while the observed variable is the output current  $I_{out}$ :

$$A_i(s) = \frac{I_{out}(s)}{I_{in}(s)} \quad (1.10)$$

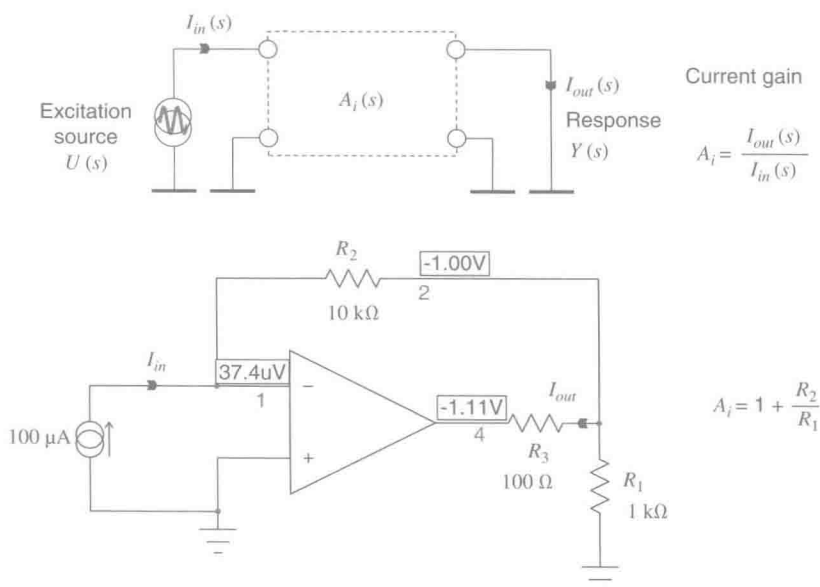
$A_i$  is dimensionless, sometimes expressed in  $[A]/[A]$ .

The third transfer function is called a *transadmittance* – short name for transfer admittance – and is denoted  $Y_r$ . You observe the output current while the input is excited by a voltage source.





**Figure 1.8** The voltage gain  $A_v$  is the first transfer function and links the output voltage to the input voltage.



**Figure 1.9** The current gain  $A_i$  is the second transfer function and links the output current to the input current.