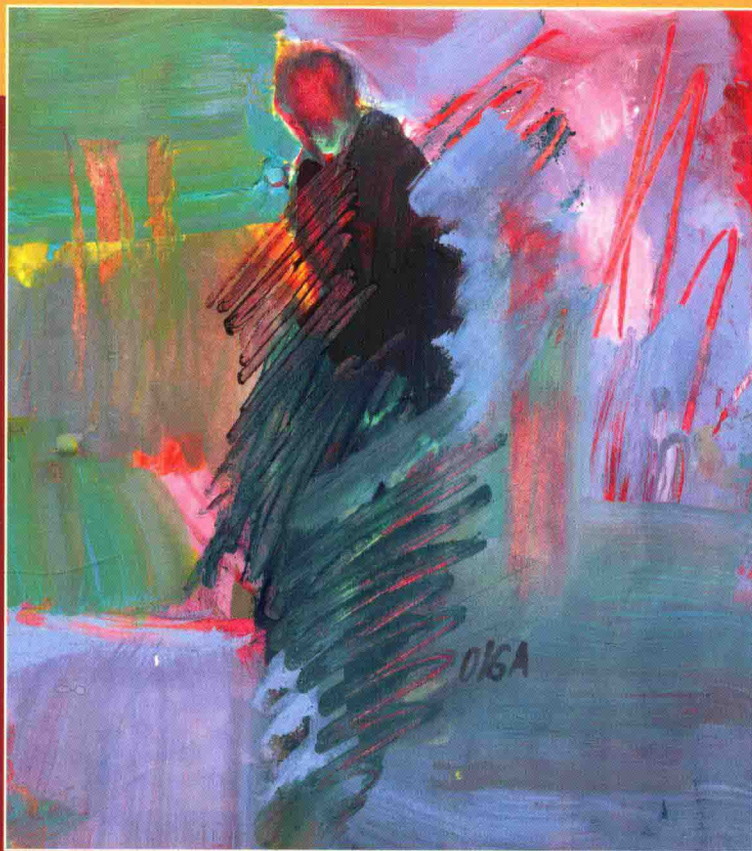


# ESSENTIALS OF CLINICAL SOCIAL WORK



JERROLD R. BRANDELL  
EDITOR



# ESSENTIALS OF CLINICAL SOCIAL WORK

**JERROLD R. BRANDELL**

*Wayne State University*



Los Angeles | London | New Delhi  
Singapore | Washington DC



Los Angeles | London | New Delhi  
Singapore | Washington DC

FOR INFORMATION:

SAGE Publications, Inc.  
2455 Teller Road  
Thousand Oaks, California 91320  
E-mail: [order@sagepub.com](mailto:order@sagepub.com)

SAGE Publications Ltd.  
1 Oliver's Yard  
55 City Road  
London EC1Y 1SP  
United Kingdom

SAGE Publications India Pvt. Ltd.  
B 1/1 Mohan Cooperative Industrial Area  
Mathura Road, New Delhi 110 044  
India

SAGE Publications Asia-Pacific Pte. Ltd.  
3 Church Street  
#10-04 Samsung Hub  
Singapore 049483

Acquisitions Editor: Kassie Graves  
Editorial Assistant: Elizabeth Luizzi  
Production Editor: Brittany Bauhaus  
Copy Editor: Michelle Ponce  
Typesetter: C&M Digitals (P) Ltd.  
Proofreader: Dennis W. Webb  
Indexer: J. Naomi Linzer Indexing Services  
Cover Designer: Gail Buschman  
Marketing Manager: Shari Countryman

Copyright © 2014 by SAGE Publications, Inc.

All rights reserved. No part of this book may be reproduced or utilized in any form or by any means, electronic or mechanical, including photocopying, recording, or by any information storage and retrieval system, without permission in writing from the publisher.

Printed in the United States of America

*Library of Congress Cataloging-in-Publication Data*

Essentials of clinical social work / J.R. Brandell (editor).

pages cm  
Includes bibliographical references and index.

ISBN 978-1-4522-9153-6 (pbk. : alk. paper)  
ISBN 978-1-4833-1312-2 (web pdf)  
ISBN 978-1-4833-2455-5 (epub)

1. Psychiatric social work. 2. Social case work. I. Brandell, Jerrold R.

HV689.E87 2013  
362.2'0425—dc23 2013031339

This book is printed on acid-free paper.



13 14 15 16 17 10 9 8 7 6 5 4 3 2 1

# **ESSENTIALS OF CLINICAL SOCIAL WORK**

---

## ABOUT THE EDITOR

**Jerrold R. Brandell**, PhD, BCD, is a faculty member at Wayne State University School of Social Work, where he was named a *distinguished professor* in 2008. A former visiting professor of social work at Lund University (Lund, Sweden) and the University of Canterbury, (Christchurch, New Zealand), he has also held appointments at the Boston University and Michigan State University Schools of Social Work. He has led workshops and lectured widely on clinical topics in this country as well as in France, Greece, Israel, Spain, Sweden, New Zealand, and China. Dr. Brandell is a practicing psychoanalyst and social worker psychotherapist, and completed his psychoanalytic training at Michigan Psychoanalytic Council. He obtained

his doctorate at The University of Chicago, and his masters at the University of Wisconsin–Madison. He is (founding) editor of the journal, *Psychoanalytic Social Work*, and has published numerous articles and book chapters, as well as 11 books, among them *Psychodynamic Social Work*, *Of Mice and Metaphors: Therapeutic Storytelling with Children*, and *Attachment and Dynamic Practice* (as coauthor). A former chairperson of the AAPCSW National Study Group, he was named a *distinguished social work practitioner* by the National Academies of Practice in 2001. He maintains a small private practice in psychoanalysis and psychoanalytic psychotherapy in Ann Arbor (Michigan) and is also actively involved in clinical supervision and consultation.

---

## ABOUT THE CONTRIBUTORS

**Karen Neuman Allen**, PhD, is Professor and chair of the Social Work Department at Arkansas State University. Dr. Allen's clinical experience and research involves working with women who have experienced interpersonal violence and individuals with chronic diseases and disabilities. She is the coauthor of "Surviving Domestic Violence" released in 2013.

**Maryann Amodeo**, PhD, MSW, is professor and chairperson, Clinical Practice Department and codirector of the Center for Addictions Research and Services, Boston University School of Social Work. She has worked in the substance abuse field for more than 20 years as a clinician, educator, and researcher. Her research focuses on the use of evidence-based treatments by substance abuse programs. She is past president of the Association for Medical Education and Research on Substance Abuse.

**Martha Bragin**, PhD, LCSW, is an associate professor at the Silberman School of Social Work at Hunter College and the Graduate Center, CUNY. She has extensive experience advising governments, international organizations, and United Nations agencies on addressing the psychosocial effects of armed conflict and disaster. She is a member of the IASC reference group on mental health and psychosocial work in emergencies, the international body that establishes standards for practice. Her research explores cultural issues in community resilience.

**Margaret O'Kane Brunhofer**, PhD, LMSW, is an adjunct professor at the Wayne State University School of Social Work, where she teaches graduate courses in grief and loss and ethics in interpersonal practice. She has extensive clinical experience in the area of grief and loss and specializes in intensive psychoanalytic psychotherapy with survivors of trauma.

**Margaret G. Frank**, MSSW, BCD, was formerly, coordinator of the Postgraduate Certificate Program in Advanced Child and Adolescent Psychotherapy, Boston University School of Social Work. She maintains a private practice in psychoanalysis and psychoanalytic psychotherapy in Newton, Massachusetts.

**Bruce D. Friedman**, PhD, ACSW, CSWM, LCSW is a professor at California State University, Bakersfield Department of Social Work Program. He earned his doctorate from Case Western Reserve University–Mandel School of Applied Social Sciences, where he completed a qualitative study examining how homeless shelters address the needs of people who are homeless. His MSW is from Washington University–George Warren Brown School of Social Work, with a dual specialization in families and substance abuse.

**Charles Garvin**, PhD is professor emeritus, University of Michigan. He is the author or coauthor of such texts as *Contemporary Group Work*,



*Interpersonal Practice in Social Work*, and *Generalist Practice*, and has edited volumes such as *The Handbook of Social Work with Groups*. He has also written book chapters and journal articles. Currently, he is researching the topic of conflict resolution and working on books dealing with social justice and group work research.

**Donald K. Granvold**, PhD, LCSW, LMFT is professor of Social Work at the University of Texas at Arlington. He was a 2013 recipient of the NASW Social Work Pioneer Award in recognition of significant contributions to the field. He is currently Professor Emeritus at University of Texas at Arlington. Dr. Granvold has been a leader in the advancement of cognitive treatment and constructivist psychotherapy methods particularly as they are applied to couples treatment and divorce. He has authored over 50 book chapters and articles in social work and allied helping profession journals. Dr. Granvold is a founding fellow of the Academy of Cognitive Therapy.

**Roberta Graziano**, DSW, is professor emerita and former associate dean, Hunter College School of Social Work, where she developed and directed the Aging and Health Work-Study Scholarship Program. Her particular interests are in theory development, particularly trauma theory, and clinical practice. She is a fellow of the New York Academy of Medicine and of the National Academies of Practice and a NASW Social Work Pioneer.

**Joan Granucci Lesser**, PhD, is adjunct Associate professor at Smith College School for Social Work. Dr. Lesser is founder and practicing clinician with the Pioneer Valley Professionals in Holyoke, MA. Her professional interests include multicultural clinical practice, research and education, neurobiological disorders of children and adolescents, and the treatment of trauma. Dr. Lesser received her MSW from Columbia University and her doctorate from New York University School of Social Work.

**Alan J. Levy**, PhD is dean of the Chicago Center for Psychoanalysis and the National Institute for

the Psychotherapies. A social worker psychoanalyst, Dr. Levy is a distinguished scholar and fellow of the National Academies of Practice. Dr. Levy received the Distinguished Career award from Simmons College School of Social Work and the Educator's Award from the National Institute for the Psychotherapies. Dr. Levy maintains a private practice in Northfield, Illinois.

**Luz Marilis López**, PhD, MSW, MPH joined the faculty at Boston University School of Social Work in 2005. Ms López has 18 years experience in the fields of HIV/AIDS and substance abuse with diverse populations. Her research focuses on the areas of addiction, trauma, HIV prevention, and Latino culture. Dr. López was born and raised in Puerto Rico. She completed her MPH and PhD degree in Social Work from Tulane University in New Orleans, Louisiana.

**Randolph L. Lucente**, PhD, is a professor, School of Social Work, Loyola University Chicago. Dr. Lucente is a former director of the doctoral program, teaches in the MSW and PhD degree programs, and maintains a part time private practice of psychotherapy in Palatine, Illinois.

**Dennis Miehl** is professor at Smith College for Social Work. His current research and theoretical interests include relational theory, supervision theory, and neurobiology and clinical social work. Dennis has been named a Distinguished Practitioner by the NAP. He maintains a private clinical practice in Northampton, Massachusetts, specializing in individual and couple therapies with survivors of childhood trauma.

**Judith Marks Mishne**, DSW, was at the time of her death in 2006, professor and program coordinator of the Doctoral Specialization in Children and Adolescents, New York University Silver School of Social Work. She was the author or editor of nine books, as well as numerous articles and book chapters. Dr. Mishne maintained a private psychotherapy practice in New York City with children, adolescents, and adults.

**Laura L. Myers**, PhD, is an associate professor and BSW program director at Florida A & M

University. Dr. Myers received her MSW (1992) and PhD (1998) in social work from the University of Georgia. She has published over 24 journal articles, 12 chapters and coauthored *A Social Worker's Guide to Evaluating Practice Outcomes* and *Basic Statistics in Multivariate Research*.

**Fredric T. Perlman**, PhD, FIPA, is a psychoanalyst in private practice in NYC. He teaches at the Institute for Psychoanalytic Education (affiliated with NYU Medical School) and at the Institute for Psychoanalytic Training and Research where he is a training and supervising analyst and currently president. He is a past President and distinguished life member of the Confederation of Independent Psychoanalytic Societies and a member of the American Psychoanalytic Association and the International Psychoanalytic Association.

**Bruce A. Thyer**, PhD, LCSW, BCBA-D, is professor and former dean with the College of

Social Work at Florida State University. He received his MSW from the University of Georgia in 1978 and his PhD in social work and psychology from the University of Michigan in 1982. He has been active in the national leadership of the Society for Social Work and Research, the Council on Social Work Education, and the American Psychological Association.

**Froma Walsh**, MSW, PhD is the Mose & Sylvia Firestone professor emerita, School of Social Service Administration and Department of Psychiatry, University of Chicago, and codirector, Chicago Center for Family Health. She is a past president of the American Family Therapy Academy, past editor of *Journal of Marital & Family Therapy*, and a recipient of numerous awards for distinguished contributions in clinical theory and research, with focus on family resilience, contemporary families, and spiritual resources.



---

# BRIEF CONTENTS

About the Editor	xvi
About the Contributors	xvii
Introduction to the Abridged Second Edition	1
1. Systems Theory	3
2. Behavioral and Cognitive Theories	21
3. Psychoanalytic Theory	42
4. Neurobiology and Clinical Social Work	84
5. Clinical Practice With Children	105
6. Clinical Social Work With Adolescents	127
7. Family Therapy: Systemic Approaches to Practice	160
8. Cognitive-Behavioral Therapy With Adults	186
9. Psychoanalytic Psychotherapy With Adults	221
10. Group Treatment With Children and Adolescents	277
11. Group Treatment With Adults	314
12. The Challenge of Clinical Work With Survivors of Trauma	338
13. Clinical Social Work With Survivors of Disaster and Terrorism: A Social Ecological Approach	366
14. Dynamic Approaches to Brief and Time-Limited Clinical Social Work	402
15. Social Work Interventions With Alcohol and Other Drug Problems	427
16. Loss and Mourning: A Life Cycle Perspective	465
Index	496

---

# DETAILED CONTENTS

About the Editor	xvi
About the Contributors	xvii
Introduction to the Abridged Second Edition	1
<b>1. Systems Theory</b>	<b>3</b>
Relevant History	4
<i>Other Contributions to Systems Theory</i>	5
<i>The Terminology of General Systems Theory</i>	8
Ecological Environment	10
<i>Ecological Systems Theory and Perspective</i>	11
Adaptation	13
Life Stress	13
<i>Coping</i>	14
<i>Power</i>	14
Human Relatedness	15
New Developments	16
<i>Clinical Tools for Information Gathering</i>	16
Conclusion	18
References	20
<b>2. Behavioral and Cognitive Theories</b>	<b>21</b>
Behavioral Theory and Clinical Social Work	22
Respondent Learning	25
<i>Everyday Examples of Respondent Learning</i>	25
<i>Clinical Examples of Respondent Learning</i>	25
<i>Clinical Treatment Using Respondent Conditioning</i>	26
Operant Learning	27
<i>Examples of Positive Reinforcement</i>	27
<i>Clinical Practice Using Positive Reinforcement</i>	28
<i>Examples of Negative Reinforcement</i>	28
<i>Clinical Practice Using Negative Reinforcement</i>	28
<i>Examples of Positive Punishment</i>	28

<i>Clinical Practice Using Positive Punishment</i>	29
<i>Examples of Negative Punishment</i>	29
<i>Clinical Practice Using Negative Punishment</i>	29
<i>Examples of Operant Extinction</i>	30
<i>Clinical Practice Using Operant Extinction</i>	30
Observational Learning	32
Summary on Social Learning Theory	33
Cognitive Theory	33
A Look Toward the Future	36
References	38
<b>3. Psychoanalytic Theory</b>	<b>42</b>
Psychoanalysis and Clinical Social Work: A Concise History	42
<i>The Diagnostic or Psychosocial School</i>	43
<i>The Functional School</i>	44
<i>The Problem-Solving Model</i>	44
Foundations of Theoretical Psychoanalysis	45
<i>Classical Psychoanalytic Theory</i>	47
Conflicts, Compromise Formations, and Their Aftermath	48
<i>Wishes of Childhood</i>	48
<i>The Sexual Drive</i>	49
<i>The Aggressive Drive</i>	50
<i>Unpleasures</i>	50
<i>Defense</i>	52
The Genesis of Psychic Conflicts and Compromise Formations	52
The Metapsychological Perspectives	54
<i>The Topographical Perspective</i>	54
<i>The Structural Perspective</i>	54
<i>The Dynamic Perspective</i>	55
<i>The Economic Perspective</i>	55
<i>The Genetic Perspective</i>	56
<i>The Adaptive Perspective</i>	56
Ego Psychology	56
<i>Anna Freud and Defense Theory</i>	57
<i>The Ego and Adaptation</i>	57
<i>The Developmentalists: Rene Spitz, Margaret Mahler, and Erik Erikson</i>	57
<i>Jacobson: The Self and the Object World</i>	59
Object Relations Theory	60
<i>Interpersonal Psychoanalysis: The Work of Harry Stack Sullivan</i>	60
<i>The Work of Melanie Klein</i>	64
<i>The Middle Tradition and D. W. Winnicott</i>	66
The Psychology of the Self	69
<i>Mirroring, Idealizing, and Partnering Selfobjects</i>	70
<i>The Tripolar Self</i>	70
<i>The Self Types</i>	70
<i>Empathy and Transmuting Internalization</i>	71
<i>Cohesion, Fragmentation, and Disintegration Anxiety</i>	71
<i>Compensatory Structures</i>	72

Recent Developments in Self Psychology	72
Relational Psychoanalysis	72
<i>The Relational Challenge to Drive Theory</i>	73
<i>Relational Configurations and the Nature of the Mind</i>	75
<i>Sex and Aggression in Relational Thought</i>	76
<i>Theoretical Roots and Developments of Relational Ideas</i>	77
<i>Basic Clinical Tenets of Relational Psychoanalysis</i>	77
Conclusion	77
References	78
<b>4. Neurobiology and Clinical Social Work</b>	<b>84</b>
An Introduction to Neurobiology: Key Areas to Consider	84
Plasticity	86
<i>Right and Left Brain Hemisphere Development and Functions</i>	86
<i>Information Processing and Memory</i>	88
<i>The Influence of Trauma on Brain Development</i>	90
Clinical Implications of Neurobiology Theory	91
Borderline Personality Disorder	97
Sexually Addictive Behavior	99
Social Anxiety/Phobia	101
Conclusion	102
References	102
<b>5. Clinical Practice With Children</b>	<b>105</b>
Theoretical Considerations	106
<i>Implications for Treatment of Children</i>	107
The Role of Play	108
Beginning Treatment	109
Therapeutic Relationship	109
Treatment Setting	114
Assessment Process	114
Core Treatment Considerations	116
Transference/Countertransference and Enactments	116
<i>Countertransference and Enactments</i>	119
Termination	122
Conclusion	125
References	125
<b>6. Clinical Social Work With Adolescents</b>	<b>127</b>
Individual Treatment	127
<i>Psychotherapy</i>	127
<i>Intensive Insight-Oriented Individual Therapy and Supportive Individual Therapy</i>	127
<i>Assessment</i>	131
<i>The Recommendation for Individual Treatment</i>	136
<i>The Treatment Relationship</i>	137

<i>The Therapeutic Alliance</i>	137
<i>Transference</i>	141
<i>Countertransference</i>	143
<i>The Real Relationship</i>	145
The Middle Phase of Treatment	145
<i>Resistance, Working Through, Intersubjectivity, and Psychoneurobiology</i>	145
<i>Working Through</i>	146
Intersubjectivity and Psychoneurobiology	147
Termination	148
Late Adolescence	150
<i>Beth, an Older Adolescent</i>	151
Reflections on the Treatment Process	154
Conclusion	155
References	156

## **7. Family Therapy: Systemic Approaches to Practice 160**

Family Systems Theory and Practice	160
Evolution of the Field	160
<i>Family Systems Orientation</i>	161
<i>Systemic Lens: Relational and Interactional Perspective</i>	161
<i>Mutual Influences and Accountability</i>	161
<i>Biopsychosocial-Spiritual Orientation</i>	162
Multigenerational Family Life Cycle Perspective	162
<i>Family Stress, Coping, and Resilience</i>	163
Assessment of Family Functioning	164
<i>Mapping the Family System</i>	164
Assessing Key Processes in Family Functioning and Resilience	165
<i>Family Belief Systems</i>	167
<i>Family Organizational Patterns</i>	167
<i>Communication Processes</i>	168
<i>Family Functioning in Context</i>	169
Major Approaches to Family Therapy	169
<i>Intergenerational Approaches</i>	172
<i>Experiential Approaches</i>	173
Problem-Solving Approaches	173
<i>Structural Model</i>	173
<i>Strategic/Systemic Approaches</i>	174
<i>Behavioral and Cognitive-Behavioral Approaches</i>	175
Recent Developments in Strengths-Based Approaches	175
<i>Postmodern Approaches</i>	176
<i>Family Psychoeducational Approach</i>	177
<i>Multisystemic Approaches With Adolescent Conduct Disorder</i>	178
<i>Collaborative Family Health Care</i>	178
<i>Practice Applications of a Family Resilience Framework</i>	179
<i>Strengthening Resilience in Vulnerable Multistressed Families</i>	180
An Expanding Field of Practice	181

Conclusion	181
References	182
<b>8. Cognitive-Behavioral Therapy With Adults</b>	<b>186</b>
Effectiveness of Cognitive-Behavioral Interventions	187
Theoretical Developments in Cognitive Psychotherapies and Practice Implications	188
<i>Constructivist Theory and Practice</i>	189
Common Features of Cognitive-Behavioral Treatment	191
<i>Idiosyncratic Subjective Experience</i>	192
<i>Collaborative Effort</i>	192
<i>Unconditional Regard for Self and Others</i>	192
<i>Structured and Directive Approach</i>	193
<i>Active Approach</i>	193
<i>Education Model</i>	193
<i>Socratic Methods</i>	193
<i>Empirical Focus</i>	194
<i>Time-Limited Treatment</i>	194
<i>Relapse Prevention</i>	194
Assessment	195
<i>Cognitive Content</i>	196
<i>Cognitive Process</i>	197
<i>Schemas</i>	197
Interventions	198
<i>Cognitive Restructuring</i>	198
<i>Rational-Emotive Behavior Therapy</i>	199
<i>Cognitive Therapy</i>	204
<i>Cognitive Skills Training Methods</i>	207
<i>Problem Solving</i>	207
Conclusion	208
References	209
<b>9. Psychoanalytic Psychotherapy With Adults</b>	<b>221</b>
Theoretical Foundations	225
The Process of Psychoanalytic Psychotherapy	230
The Technique of Psychoanalytic Therapy	234
<i>The Therapeutic Situation</i>	235
<i>The Therapeutic Relationship</i>	237
<i>The Therapeutic Dialogue</i>	246
<i>The Client's Communications</i>	246
<i>Therapeutic Listening</i>	253
<i>The Interpretive Process</i>	255
<i>Interpretation of Transference</i>	257
<i>Interpretation of Resistance</i>	259
<i>The Validation of Interpretations</i>	262
Psychoanalytic Therapy and Its Modifications	263
Conclusion	268
References	269



<b>10. Group Treatment With Children and Adolescents</b>	<b>277</b>
History of Group Work With Children and Adolescents	278
<i>Group Play Therapy</i>	280
Developmental Assessment	280
Adolescent Groups	281
Drama Groups	283
Group Components	285
<i>Social Context</i>	285
<i>Agency Context and Sponsorship</i>	285
<i>Need</i>	286
<i>Purpose and Theoretical Framework</i>	287
<i>Composition</i>	289
<i>Structure</i>	289
<i>Content</i>	290
Theoretical Orientation: Stages of Group Development and the Role of the Group Leader	291
<i>Pregroup Contact</i>	294
<i>Beginnings (Inclusion/Orientation)</i>	296
<i>Middles (Uncertainty/Exploration)</i>	300
<i>Endings (Separation/Termination)</i>	303
Groups for Parents and Caregivers of Children and Adolescents	306
Conclusion	308
References	309
 <b>11. Group Treatment With Adults</b>	 <b>314</b>
Practice Models for Group Treatment With Adults	314
<i>The Mediation Model</i>	314
<i>The Remedial Model</i>	315
<i>The Task-Centered Model</i>	315
Feminist, Social Justice, and Other Models for Member Empowerment	316
<i>Group Psychotherapy Models</i>	316
Change Theories Relevant to Group Treatment of Adults	317
<i>Psychodynamic Theory</i>	317
<i>Cognitive-Behavioral Theory</i>	317
<i>Social-Psychological and Small-Group Theories</i>	317
<i>Ecological Theories</i>	318
<i>Therapeutic Factors</i>	318
The Assessment Phase	318
<i>Whether to Recommend Group Treatment</i>	319
<i>Type of Group</i>	319
<i>Assessment Approaches</i>	320
Creating Groups	322
Group Formation	323
<i>Agreement on Group Purpose</i>	324
<i>Individual Goals</i>	324
<i>Establishing Group Norms</i>	324
<i>Developing Relationships Among Members</i>	325

<i>Developing Relationships With the Group Worker</i>	325
<i>Planning Group Activities</i>	325
<i>Dealing With Feelings About the Group</i>	325
<i>Evaluation</i>	326
Change Processes During the Middle Phase	326
<i>Problem Solving</i>	327
<i>Cognitive-Behavioral Approaches</i>	328
<i>Process and Process Illumination</i>	329
<i>The Use of a Program</i>	330
<i>The Use of Structure and Role Assignments</i>	331
<i>The Use of Interpretation</i>	332
Termination	332
<i>Feelings About the Ending</i>	333
<i>Maintaining Changes</i>	333
<i>Seeking Out New Opportunities for Growth and Change</i>	333
Evaluation	333
Research on Group Treatment	333
Conclusion	334
References	335

## **12. The Challenge of Clinical Work With Survivors of Trauma 338**

Background	338
Definitions and Theory Building	339
Posttraumatic Stress Disorder	340
Cognitive, Affective, and Somatic Effects	341
Assessment and Treatment Strategies in Clinical Social Work	347
Treatment Modalities	354
<i>Family Treatment</i>	354
<i>Group Treatment</i>	355
<i>Other Adjunctive Therapies</i>	356
<i>Psychopharmacology</i>	357
<i>Countertransference and Vicarious Traumatization</i>	358
Conclusion	359
References	360

## **13. Clinical Social Work With Survivors of Disaster and Terrorism: A Social Ecological Approach 366**

Commonly Used Terms in Disaster Relief and Recovery	367
<i>Disaster</i>	367
<i>Terrorism</i>	367
<i>What Do We Mean by Psychosocial?</i>	367
The Psychosocial Sequelae of Disaster and Terrorism	368
The Psychosocial Consequences of Disaster and Terrorism: Massive Loss	368
<i>Losing Family, Friends, and Familiar Faces</i>	368
<i>Complicated Grief and Ambiguous Loss</i>	369
<i>Loss of Material Things</i>	369

<i>Loss of Hopes and Dreams</i>	369
<i>Change in Relationships: Loss of Familiar Experience</i>	369
<i>Loss of Certainty</i>	369
Exposure to Extreme Violence	370
Clinical Social Work Theories That Support Best Practices in Disaster and Mass Violence	370
<i>Ecological Systems Theory</i>	370
<i>The Role of Psychodynamic Theory in Supporting Resilience</i>	373
<i>Trauma Theory and the PTSD Controversy</i>	374
Emerging Consensus on Best Practices to Support	
Well-Being in Disaster and Mass Violence	375
The Roles of Clinical Social Work During and	
After Disaster and Terrorism: A Multilayered Approach	377
Tier I: Basic Services and Security	378
<i>Develop Coordinating Structures From the</i>	
<i>Local to the Larger-Community Level</i>	378
<i>Get Clear, Accurate, and Coordinated Information</i>	
<i>to the Population</i>	378
<i>Build the Capacity of Existing Health, Education, and</i>	
<i>Social Welfare Systems: Support Local Practitioners in Doing Their Jobs Well</i>	378
<i>Support Skilled Workers, Merchants, and</i>	
<i>All Others in Being Useful at Their Work</i>	379
<i>Involve Community Members in Defining Their</i>	
<i>Own Well-Being and That of Their Children</i>	379
<i>Ensuring the Protection of Vulnerable Groups</i>	381
<i>Identifying the Dead Before They Are</i>	
<i>Buried and Informing Families as Soon as Possible</i>	381
Tier II: Community and Family Supports and Tier III: Focused Nonspecialized Supports	381
<i>Support for Mourning Rituals and Ceremonies</i>	381
<i>Support for First Responders</i>	383
<i>Support for Children and Adolescents</i>	384
Psychological First Aid: Listening in the Face of Disaster	390
Tier IV: Specialized Care	390
<i>Support for the Serious and Persistently Mentally Ill</i>	390
<i>When Risk Overwhelms Resilience: People Who Require a Clinical Level</i>	
<i>of Intervention Following a Disaster or Terror Attack</i>	391
Conclusion	394
Appendix A	394
Do's and Don'ts in Community Emergencies	394
Appendix B	396
Preventing Separations in Acute Emergencies: A Guide for First Responders	396
<i>Preventing Separations During Mass Movement</i>	396
<i>Preventing Separations Due to Sudden Departure</i>	397
<i>Preventing Separations Due to the Incapacity to Continue Care</i>	397
Appendix C	397
Psychological First Aid	397
References	399
Key Websites	401