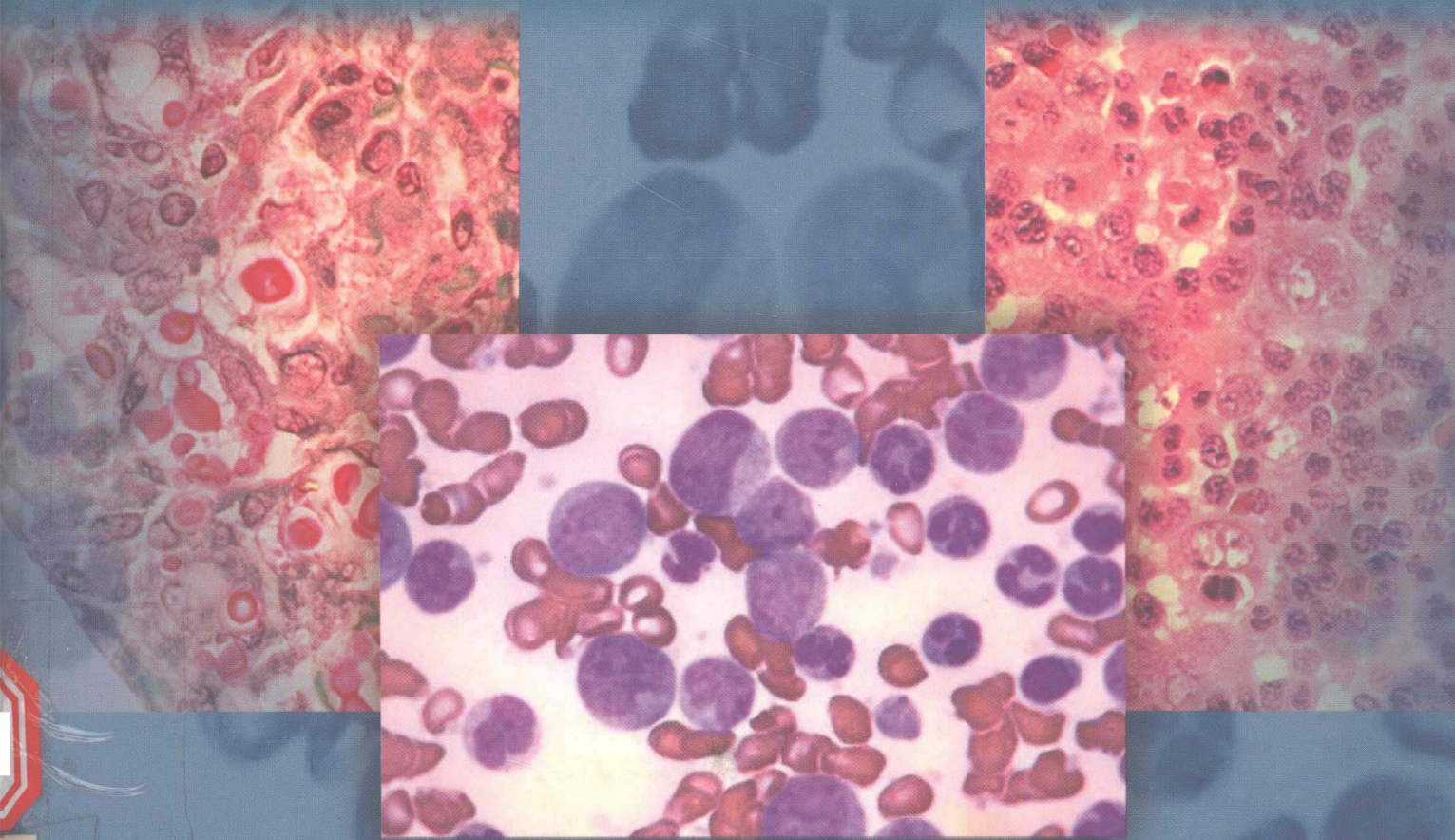


Essentials of Immunology & Serology



Jacqueline Stanley



Essentials of Immunology & Serology

JACQUELINE STANLEY, Ph.D.

*St. George's University School of Medicine
St. George's, Grenada, West Indies*

Essentials of Immunology & Serology
by Jacqueline Stanley

Health Care Publishing Director: William Brottmeier
Executive Editor: Cathy L. Esperti
Acquisitions Editor: Cathy L. Esperti
Developmental Editor: Darcy M. Scelsi

Editorial Assistant: Matthew Thouin
Executive Marketing Manager: Dawn F. Gerrain
Channel Manager: Jennifer McAvey
Production Editor: James Zayicek

COPYRIGHT © 2002 by Delmar, a division of Thomson Learning, Inc. Thomson Learning™ is a trademark used herein under license.

Printed in the United States of America
1 2 3 4 5 XXX 06 05 04 03 02

For more information, contact Delmar,
3 Columbia Circle, PO Box 15015,
Albany, NY 12212-0515
Or you can visit our Internet site at
<http://www.delmar.com>

For permission to use material from this text or product, contact us by
Tel (800) 730-2214
Fax (800) 730-2215

ISBN 0-7668-1064-X

ALL RIGHTS RESERVED. No part of this work covered by the copyright hereon may be reproduced or used in any form or by any means—graphics, electronic, or mechanical, including photocopying, recording, taping, Web distribution of information storage and retrieval system—without written permission of the publisher.

NOTICE TO THE READER

The Publisher and the authors do not warrant or guarantee any of the products described herein or perform any independent analysis in connection with any of the product information contained herein. The publisher and the authors do not assume and expressly disclaim any obligation to obtain and include information other than that provided by the manufacturer.

The reader is expressly warned to consider and adopt all safety precautions that might be indicated by the activities described herein and to avoid all potential hazards. By following the instructions contained herein, the reader willingly assumes all risks in connection with such instructions.

The publisher and the authors make no representations or warranties of any kind, including but not limited to the warranties of fitness for a particular purpose or merchantability nor are any such representations implied with respect to the material set forth herein, and the publisher and the authors take no responsibility with respect to such material. The publisher and the authors shall not be liable for any special, consequential, or exemplary damages resulting, in whole or in part, from the reader's use of, or reliance upon, this material.

The authors and publisher have made a conscientious effort to ensure that the drug information and recommended dosages in this book are accurate and in accord with accepted standards at the time of publication. However, pharmacology and therapeutics are rapidly changing sciences, so readers are advised, before administering any drug, to check the package insert provided by the manufacturer for the recommended dose, for any contraindications for administration, and for any added warnings and precautions. This recommendation is especially important for new, infrequently used, or highly toxic drugs.

Preface

Essentials of Immunology and Serology is divided into four main sections: (1) Functions of the Immune System and Immunity, (2) Laboratory Techniques, (3) Infectious Diseases, and (4) Clinical Disorders. It introduces the reader to the fundamental components of the immune system and explains how these components interact to prevent bacterial, viral, parasitic, and fungal infections. This foundation is then used to explain how current vaccines enhance immunity, and how new technologies are being used to develop future vaccines. The orchestral nature of the immune system is highlighted by a description of how abnormalities in this system manifest as clinical disorders. Additionally, readers are introduced to both common and innovative laboratory techniques available to aid in diagnosis of infectious diseases and a number of clinical disorders.

Is this the right book for you? Yes, if you want:

An Easy Read. The real appeal of this text is that the information is presented in relatively simple terms without jeopardizing the accuracy of the content. The first nine chapters should be read in sequence because each chapter builds upon the last.

To Learn from Illustrations. This book contains more than 250 illustrations carefully designed to complement the text, as well as numerous concept maps that allow learning at a glance.

Clinical Cases and Explanations. A clinical case is included in each chapter to provide an opportunity to integrate the main concepts of each chapter.

Laboratory Techniques: After learning about the nature of each infectious disease (or clinical disorder) a spectrum of laboratory tests available to aid in their diagnosis is introduced. Names of diagnostic kits and their manufacturers are also provided.

Web Based Learning. A list of relevant websites is included at the end of each chapter along with a

short assignment. Besides providing additional text, many of these websites include animations, figures, and PowerPoint presentations to facilitate learning. Please note that because Internet resources are of a time sensitive nature and URL addresses may change or be deleted, searches should also be conducted by association and/or topic.

Test Questions. Practice questions that include multiple choice, fill in the blanks, and true/false formats are provided so that you can check your progress at the end of each chapter.

SUPPLEMENTS FOR THE STUDENT

A workbook that correlates to the text is also available to further aid in retention of the basic concepts and principles discussed in *Essentials of Immunology and Serology*. The workbook offers further review of key terms and concepts through the use of matching exercises, short answer, multiple choice, and true/false questions. Additional critical thinking questions and Case Studies are included to hone problem-solving skills.

Order Number 0-7668-1065-8

SUPPLEMENTS FOR THE INSTRUCTOR

An instructor's guide accompanies the text that serves to guide the instructor through each chapter with review of key terms and summaries of the concepts discussed in each chapter. Answers to all text questions are available as well as transparencies to aid in classroom teaching.

Order Number 0-7668-1066-6

A computerized testbank is also available with over 700 questions in a variety of formats. The formats include Modified True/false, multiple choice, completion, matching and short answer questions. The instructor can create chapter quizzes and final exams based upon the bank of questions provided.

Order Number 0-7668-1067-4

ACKNOWLEDGMENTS

I wish to express my appreciation to Reginald Gorczynski, M.D., Ph.D., Edward Johnson, M.D., David Lennon, Ph.D., Calum MacPherson, Ph.D., and Ateef Qureshi, Ph.D., as well as to John Boffa, B.Sc., and John McGuirk, M.A., for discussion and suggestions.

Jacqueline Stanley, Ph.D.

About the Author

Jacqueline Stanley, Ph.D., has been a Professor and Course Director of Immunology at St. George's University, School of Medicine for the last 10 years. She recently coauthored the textbook, *Clinical Immunology* (1999) with Reginald Gorczynski, M.D., Ph.D.

She was academically trained in Canada, receiving her M.Sc. from the Biochemistry Department at Laurentian University and her Ph.D. from the Department of Immunology at the University of Toronto.

Contents

| | | | |
|--|-------------|--|-----------|
| List of Cases | xv | | |
| List of Laboratory Techniques | xvii | | |
| Preface | xix | | |
| About the Author | xxi | | |
| SECTION I: FUNCTIONS OF THE IMMUNE SYSTEM AND IMMUNITY | 1 | | |
| Chapter 1: An Overview of the Immune System | 3 | | |
| Historical Perspective | 4 | | |
| An Introduction to the Immune System | 4 | | |
| <i>Innate Immunity</i> | 4 | | |
| <i>Adaptive Immunity</i> | 6 | | |
| Overview of Innate and Adaptive Immune Integration | 8 | | |
| <i>Custom-Made Assault</i> | 8 | | |
| Immunodeficiencies | 9 | | |
| <i>Secondary Immunodeficiency Disorders</i> | 10 | | |
| Chapter 2: Antigens and Antigen Recognition | 14 | | |
| Antigens | 15 | | |
| <i>Prerequisites for Immunogenicity</i> | 15 | | |
| <i>Relative Immunogenicity of Different Types of Molecules</i> | 15 | | |
| <i>Molecules That Enhance Immunogenicity</i> | 16 | | |
| Activators of Lymphocytes | 16 | | |
| <i>Antigens</i> | 16 | | |
| <i>Superantigens</i> | 17 | | |
| <i>Mitogens</i> | 17 | | |
| Antigen Recognition | 17 | | |
| <i>Antigen Recognition by Cells of Innate Immunity</i> | 17 | | |
| <i>Antigen Recognition by Cells of Adaptive Immunity</i> | 18 | | |
| Chapter 3: Antibodies | 22 | | |
| Antibodies | 23 | | |
| <i>Gamma Globulins</i> | 24 | | |
| <i>Structure</i> | 24 | | |
| | | <i>Bifunctional Property of Antibodies</i> | 24 |
| | | <i>Determining Bifunctionality</i> | 25 |
| | | <i>Cross-Reactivity</i> | 25 |
| | | Antigen Antibody Interactions | 26 |
| | | <i>Primary Interactions</i> | 26 |
| | | <i>Secondary Interactions</i> | 26 |
| | | Classification of Antibodies | 26 |
| | | <i>Isotypes</i> | 27 |
| | | <i>Allotypes</i> | 27 |
| | | Properties and Biological Functions of Antibody Isotypes | 28 |
| | | <i>Immunoglobulin G</i> | 28 |
| | | <i>Immunoglobulin E</i> | 29 |
| | | <i>Immunoglobulin M</i> | 29 |
| | | <i>Immunoglobulin D</i> | 30 |
| | | <i>Immunoglobulin A</i> | 30 |
| | | Quantitation of Serum Antibodies | 31 |
| | | Monoclonal Antibodies | 31 |
| | | Chapter 4: Cells and Tissues of Innate Immunity | 37 |
| | | Lymphoid Tissues | 38 |
| | | <i>Primary Lymphoid Tissues</i> | 40 |
| | | <i>Secondary Lymphoid Tissues</i> | 40 |
| | | Cells of Innate Immunity | 41 |
| | | <i>Phagocytes</i> | 41 |
| | | <i>Antigen Presenting Cells</i> | 45 |
| | | <i>Natural Killer Cells</i> | 45 |
| | | <i>Eosinophils</i> | 46 |
| | | <i>Mast Cells and Basophils</i> | 46 |
| | | Assessing Dysfunction in Phagocytes and Natural Killer Cells | 47 |
| | | <i>Phagocytes</i> | 47 |
| | | <i>Natural Killer Cells</i> | 48 |
| | | Separation of Cell Populations | 48 |
| | | <i>Negative Selection Approach</i> | 48 |
| | | <i>Positive Selection Approach</i> | 49 |
| | | Chapter 5: B cells | 53 |
| | | B cells | 54 |
| | | <i>B cell Receptors</i> | 54 |
| | | B cell Maturation | 55 |

| | | | |
|--|-----------|---|------------|
| <i>Expression of Unique B cell Receptors:</i> | | <i>Fate of Activated CD4+ T cells</i> | 93 |
| <i>Monomeric IgM</i> | 55 | CD8+ T cells Encounter Antigen | 93 |
| <i>Tolerance Induction</i> | 56 | <i>Activation and Differentiation of pCTL to CTL</i> | 94 |
| <i>Cell Surface Expression of IgM and IgD:</i> | | <i>Destruction of Infected Cells</i> | 94 |
| <i>Alternative Splicing</i> | 56 | <i>Fate of CD8+ T cells</i> | 94 |
| Naïve B cell Activation Following Antigen Encounter | 58 | Memory T cells | 94 |
| <i>Fate of Antigen</i> | 58 | Enumeration of T cells | 94 |
| <i>Role of Helper T cells</i> | 58 | Approaches for the Isolation of T cells | 95 |
| <i>Fate of Activated Naïve B cells</i> | 58 | <i>Magnetic Beads for Separation of Cells</i> | 95 |
| <i>Isotype Switching</i> | 58 | <i>Cell Sorting for Separation of Cells</i> | 95 |
| <i>Affinity Maturation</i> | 59 | <i>Complement Fixation for Removal of Cells</i> | 95 |
| <i>Turning Off the B cell Response</i> | 59 | <i>Miscellaneous Approaches</i> | 95 |
| <i>Kinetics of Primary B cell Responses to Protein Antigens</i> | 60 | Assessing T cell Function | 96 |
| Secondary Immune Responses | 60 | <i>Cell Proliferation</i> | 96 |
| B cell Responses to T-Independent Antigens | 60 | Chapter 8: Complement | 100 |
| B cell Responses to Polyclonal Activators | 60 | Complement | 101 |
| B cell Enumeration and B cell Function | 60 | Classical Pathway of Complement | 102 |
| Chapter 6: The Major Histocompatibility Complex, Antigen Processing, and Antigen Presentation | 69 | <i>Components</i> | 102 |
| Recognition of Non-Self | 70 | <i>Activation</i> | 103 |
| Major Histocompatibility Complex | 70 | Alternative Pathway of Complement | 106 |
| <i>Class I MHC in Humans</i> | 71 | <i>Components</i> | 106 |
| <i>Class II MHC in Humans</i> | 72 | <i>Activation</i> | 106 |
| <i>Role of MHC in Immune Responses</i> | 73 | Regulation of Complement | 106 |
| MHC Genes and Disease | 74 | <i>Regulation of Classical Pathway</i> | 107 |
| <i>Relative Risk and Hypotheses</i> | 74 | <i>Regulation of C3 Convertases</i> | 107 |
| Transplantation | 75 | <i>Regulation of the Membrane Attack Complex</i> | 107 |
| <i>Graft Rejection</i> | 76 | Complement Receptors | 108 |
| <i>Immunosuppressive Therapies</i> | 76 | Biological Activities of Complement | 109 |
| <i>Screening to Ensure Compatibility</i> | 76 | <i>Role of Complement in the Inflammatory Response</i> | 109 |
| Antigen Processing and Antigen Presentation | 80 | <i>Role of Complement in Phagocytosis</i> | 109 |
| <i>Antigen Processing and Presentation with Class I MHC</i> | 80 | <i>Role of Complement in the Elimination of Immune Complexes</i> | 110 |
| <i>Antigen Processing and Presentation with Class II MHC</i> | 81 | <i>Role of Complement in Osmotic Lysis of Bacteria</i> | 110 |
| Chapter 7: T cells | 85 | <i>Evading the Biological Activities of Complement</i> | 110 |
| T cells | 86 | Complement Deficiencies and Disease | 110 |
| General Features of T cell Receptors | 87 | <i>C1 Inhibitor Protein Deficiency</i> | 110 |
| <i>T cell Repertoire</i> | 88 | <i>Deficiencies in C2 and C4</i> | 111 |
| T cell Maturation | 88 | <i>Deficiencies in Membrane Linkages for Regulatory Proteins</i> | 111 |
| <i>Somatic Recombination and Construction of T cell Receptors</i> | 88 | <i>Deficiencies in MAC Proteins</i> | 111 |
| <i>Allelic Exclusion</i> | 90 | <i>Deficiencies in C3</i> | 111 |
| <i>Tolerance Induction</i> | 90 | Evaluating Complement Pathways | 111 |
| CD4+ T cells Encounter Antigen | 90 | <i>Measurement of Overall Complement Activity</i> | 111 |
| <i>Antigen Presentation to CD4+ T cells</i> | 91 | <i>Measurement of Complement Components</i> | 114 |
| <i>Signals Required for Activation of CD4+ T cells</i> | 92 | Chapter 9: Orchestration of Host Defenses in Response to Infection | 118 |
| <i>T cell Growth Factor</i> | 92 | Orchestration of Host Defenses in Response to Infection | 119 |
| <i>Fate of Activated CD4+ Naïve T cells</i> | 92 | | |
| <i>T cell Cytokines in Host Defense</i> | 93 | | |

| | | | |
|---|------------|---|------------|
| <i>Challenge of Immunology</i> | 119 | <i>Single Dilutions</i> | 154 |
| <i>Classes of Infectious Agents</i> | 119 | Principles of Immunoassays That Use Indicator Labels | 154 |
| Infectious Agents Outside Cells: | | <i>Using Protein A in Immunoassays</i> | 154 |
| Extracellular Microbes | 120 | <i>Competitive Binding Immunoassays</i> | 154 |
| <i>Orchestration of Localized Host Defense</i> | | <i>Non Competitive Immunoassays</i> | 155 |
| <i>Mechanisms in Primary Infections</i> | 120 | Indicator-labeled Immunoassays: | |
| <i>Destination: Lymph Node</i> | 124 | Nomenclature | 157 |
| <i>Memory Immune Responses</i> | 125 | <i>Enzyme-linked Immunosorbent Assay (ELISA)</i> | 157 |
| Microbes That Thrive in the Phagosomes | 125 | <i>Chemiluminescent Immunoassay (CLIA)</i> | 160 |
| <i>Orchestration of Host Defense Mechanisms in Primary Infections</i> | 125 | <i>Enzyme-multiplied Immunoassay Technique (EMIT)</i> | 160 |
| Microbes Present in the Cell Cytosol | 126 | <i>Fluorescence Polarization Immunoassay (FPIA)</i> | 161 |
| <i>Orchestration of Host Defenses in Primary Infections</i> | 126 | <i>Radioimmunoassays (RIA)</i> | 163 |
| SECTION II: LABORATORY TECHNIQUES | 131 | Chapter 12: Precipitation | 166 |
| Chapter 10: Instrumentation | 133 | Antigen and Antibody Interactions | 167 |
| Instrumentation for Measurement of Antigen-Antibody Interactions | 134 | <i>Primary Antigen/Antibody Interactions</i> | 167 |
| <i>Gamma Ray Emission, Fluorescence, Chemiluminescence</i> | 134 | <i>Secondary Antigen/Antibody Reactions</i> | 167 |
| Instrumentation for Measuring Color Intensity | 135 | The Precipitin Curve | 169 |
| <i>Spectrophotometers and Photometers</i> | 136 | <i>Zone of Antibody Excess</i> | 169 |
| Instrumentation for Measuring Chemiluminescence | 137 | <i>Zone of Equivalence</i> | 169 |
| <i>Luminometer</i> | 137 | <i>Zone of Antigen Excess</i> | 170 |
| Instrumentation for Measuring Fluorescence | 138 | Immunodiffusion | 170 |
| <i>Factors That Affect Fluorescence Measurements</i> | 138 | <i>Detection of Immune Complexes in Immunodiffusion Systems</i> | 170 |
| <i>Spectrofluorometers and Filter Fluorometers</i> | 138 | Immunodiffusion Techniques | 171 |
| <i>Flow Cytometers</i> | 140 | Single Immunodiffusion Techniques | 171 |
| <i>Fluorescence Microscope</i> | 141 | <i>Single Linear Immunodiffusion</i> | 171 |
| Instrumentation for Detecting Radioactivity | 142 | <i>Single Radial Immunodiffusion</i> | 172 |
| <i>Radioactivity</i> | 142 | <i>Rocket Immuno-electrophoresis</i> | 172 |
| <i>Gamma Counter: Solid Scintillation Detector Counter</i> | 142 | Double Immunodiffusion Techniques | 174 |
| Instrumentation for Detecting Non-labeled Immune Complexes | 143 | <i>Double Simple Immunodiffusion</i> | 174 |
| <i>Nephelometry</i> | 143 | <i>Ouchterlony Method</i> | 175 |
| <i>Turbidimetry</i> | 145 | <i>Counter Immuno-electrophoresis</i> | 177 |
| Chapter 11: Indicator Labels | 149 | Chapter 13: Electrophoresis | 181 |
| Indicator-labeled Immunoassays | 150 | Electrophoresis | 182 |
| <i>Radioactive Isotopes</i> | 150 | <i>Role in Clinical Laboratories</i> | 182 |
| <i>Fluorochromes</i> | 150 | Factors That Influence the Rate of Protein Migration | 183 |
| <i>Enzyme-linked Approach</i> | 151 | <i>Role of pH in Electrophoresis</i> | 183 |
| Methods of Coupling Indicator Labels to Antigens or Antibodies | 152 | <i>Role of Temperature in Electrophoresis</i> | 183 |
| <i>The Biotin-(Strept)avidin-Indicator Label System</i> | 152 | <i>Effect of Endo-osmosis on Electrophoresis</i> | 184 |
| Standard Curves in Immunoassays | 153 | Non Soluble Support Mediums | 184 |
| <i>Serial Dilutions of Standards</i> | 153 | <i>Agar and Agarose</i> | 185 |
| | | <i>Cellulose Acetate</i> | 185 |
| | | <i>Polyacrylamide</i> | 185 |
| | | Zone Electrophoresis | 186 |
| | | <i>Separation of Serum Proteins on the Basis of Charge</i> | 186 |
| | | Two-Stage Approach to Immuno-electrophoresis | 186 |
| | | <i>Classic Immuno-electrophoresis</i> | 186 |

| | | | |
|--|------------|---|------------|
| <i>Crossed Immunoelectrophoresis</i> | 187 | <i>Transcription Mediated Amplification</i> | 235 |
| <i>Immunofixation Electrophoresis</i> | 189 | <i>Second Generation Nucleic Acid</i> | |
| One-Stage Approach to | | <i>Amplification Strategies</i> | 235 |
| Immunoelectrophoresis | 189 | Signal Amplification Assays | 235 |
| <i>Counter Immunoelectrophoresis</i> | 191 | <i>Branched DNA</i> | 235 |
| <i>Rocket Immunoelectrophoresis</i> | 191 | <i>Hybrid Capture System</i> | 236 |
| Polyacrylamide Gel Electrophoresis | 193 | Capture and Detection Techniques | 236 |
| <i>Sodium Dodecyl Sulphate Polyacrylamide</i> | | <i>Amplicons</i> | 236 |
| <i>Gel Electrophoresis</i> | 193 | <i>Signal Amplification Assays</i> | 237 |
| Chapter 14: Agglutination | 202 | Molecular Blotting Techniques | 237 |
| Agglutination | 203 | <i>Southern Blot</i> | 237 |
| Principles of Agglutination | 203 | <i>Northern Blot</i> | 237 |
| <i>Determining Antibody Titer</i> | 204 | <i>Western Blot</i> | 237 |
| <i>Factors That Affect Agglutination</i> | 204 | Detecting Genetic Mutations in Clinical | |
| Agglutination Techniques | 205 | Laboratories | 237 |
| <i>Slide Tests</i> | 208 | <i>Sickle Cell Disease: RFLP and Southern</i> | |
| <i>Microtiter Plate Tests</i> | 208 | <i>Blotting</i> | 237 |
| Types of Agglutination Reactions | 208 | <i>Fragile X Syndrome: PCR and Southern</i> | |
| <i>Direct Agglutination</i> | 208 | <i>Blotting</i> | 240 |
| <i>Indirect Agglutination</i> | 208 | | |
| <i>Reverse Agglutination</i> | 211 | | |
| <i>Latex Particle Agglutination Inhibition</i> | | | |
| <i>Reaction</i> | 211 | | |
| <i>Quantitative Agglutination Reactions</i> | 213 | | |
| <i>Hemagglutination</i> | 214 | | |
| <i>Viral Hemagglutination/Nonimmune</i> | | | |
| <i>Agglutination</i> | 214 | | |
| <i>Viral Hemagglutination Inhibition</i> | 217 | | |
| Antiglobulins Tests | 219 | | |
| <i>Direct Coombs' Test</i> | 219 | | |
| <i>Indirect Coombs' Agglutination Test</i> | 219 | | |
| Applications of the Agglutination/ | | | |
| Hemagglutination Reaction | 219 | | |
| <i>Determination of ABO Blood Groups</i> | 219 | | |
| <i>Cold Autoagglutinins</i> | 219 | | |
| <i>Febrile Agglutinins</i> | 221 | | |
| <i>Heterophile Agglutinins</i> | 221 | | |
| <i>Autoimmune Disorders</i> | 221 | | |
| Chapter 15: Molecular Diagnostic | | | |
| Technology | 225 | | |
| Molecular Diagnostic Technology | 227 | | |
| Nucleic Acids | 227 | | |
| <i>Deoxyribonucleic Acid</i> | 227 | | |
| <i>Ribonucleic Acids</i> | 229 | | |
| Molecular Biology Tools | 230 | | |
| <i>Restriction Endonucleases</i> | 230 | | |
| <i>Primers and Probes</i> | 232 | | |
| <i>Complementary DNA</i> | 232 | | |
| Amplification of Nucleic Acids | 232 | | |
| <i>Polymerase Chain Reaction</i> | 232 | | |
| <i>Reverse Transcribed Polymerase Chain</i> | | | |
| <i>Reaction</i> | 232 | | |
| <i>Nucleic Acid Sequence Based</i> | | | |
| <i>Amplification</i> | 235 | | |
| | | SECTION III: DISEASES AND | |
| | | DISORDERS | 249 |
| | | Chapter 16: Bacterial Infections in | |
| | | Sexually Transmitted Diseases | 251 |
| | | Venereal Syphilis: <i>Treponema pallidum</i> | 253 |
| | | <i>Clinical Manifestations/Pathology</i> | 253 |
| | | <i>Immunology</i> | 254 |
| | | <i>Immunization Progress</i> | 255 |
| | | Laboratory Diagnosis | 256 |
| | | <i>Non Treponemal Tests</i> | 256 |
| | | <i>Standard Non Treponemal Tests</i> | 256 |
| | | <i>Standard Treponemal Tests</i> | 257 |
| | | <i>Non Standard Non Treponemal and</i> | |
| | | <i>Treponemal Tests</i> | 260 |
| | | Gonorrhoea: <i>Neisseria gonorrhoeae</i> | 263 |
| | | <i>Clinical Manifestations/Pathology</i> | 263 |
| | | <i>Immunology</i> | 264 |
| | | <i>Immunization Progress</i> | 264 |
| | | Laboratory Diagnosis | 264 |
| | | <i>Immunoassays to Detect Antigen</i> | 264 |
| | | <i>Ligase Chain Reaction Nucleic Acid</i> | |
| | | <i>Amplification Assay</i> | 265 |
| | | Genital Tract Infection: <i>Chlamydia</i> | |
| | | <i>trachomatis</i> | 265 |
| | | <i>Energy Parasites</i> | 269 |
| | | <i>Clinical Manifestations/Pathology</i> | 269 |
| | | <i>Immunology</i> | 269 |
| | | <i>Immunization Progress</i> | 269 |
| | | Laboratory Diagnosis | 270 |
| | | <i>Optical Immunoassay to Detect Antigen</i> | 270 |
| | | <i>Mainstream Immunoassays for Antigen</i> | |
| | | <i>Detection</i> | 270 |
| | | <i>Nucleic Acid Amplification to Detect</i> | |
| | | <i>Antigen</i> | 270 |

Chapter 17: Upper Respiratory Tract**Bacterial Infections 276**

| | |
|---|-----|
| Atypical Pneumonia: <i>Mycoplasma pneumoniae</i> | 277 |
| Clinical Manifestations/Pathology | 277 |
| Immunology | 278 |
| Immunization Progress | 278 |
| Laboratory Diagnosis | 278 |
| Streptococcal Infections: <i>Streptococcaceae</i> | 280 |
| Lancefield Classification | 281 |
| Clinical Manifestations | 281 |
| Pathogenic Factors | 282 |
| Immunology | 283 |
| Immunization Progress | 283 |
| Laboratory Diagnosis | 284 |
| Whooping Cough: <i>Bordetella pertussis</i> | 285 |
| Clinical Manifestations/Pathology | 285 |
| Immunology | 285 |
| Immunization | 286 |
| Laboratory Diagnosis | 286 |

Chapter 18: Bacterial Infections: Tick Borne, Enteric, and Zoonotic 290

| | |
|--|-----|
| Lyme Disease: <i>Borrelia burgdorferi</i> | 291 |
| Role of Ticks in Lyme Disease | 291 |
| Clinical Manifestations/Pathology | 292 |
| Immunology | 292 |
| Immunization | 293 |
| Laboratory Diagnosis | 293 |
| Rocky Mountain Spotted Fever: <i>Rickettsia rickettsii</i> | 296 |
| Clinical Manifestations/Pathology | 296 |
| Immunology | 297 |
| Immunization Progress | 297 |
| Laboratory Diagnosis | 297 |
| Leptospirosis: <i>Leptospira interrogans</i> | 298 |
| Clinical Manifestations/Pathology | 299 |
| Immunology | 299 |
| Immunization Progress | 299 |
| Laboratory Diagnosis | 299 |
| Salmonellosis and Typhoid Fever: | |
| <i>Salmonella</i> species | 300 |
| Clinical Manifestations/Pathology | 301 |
| Immunology | 301 |
| Immunization | 301 |
| Laboratory Diagnosis | 302 |

Chapter 19: Hepatitis 308

| | |
|-----------------------------------|-----|
| The Causative Agents of Hepatitis | 309 |
| Hepatitis A Virus | 309 |
| Hepatitis B Virus | 309 |
| Hepatitis C Virus | 309 |
| Clinical Manifestations/Pathology | 309 |
| Hepatitis A | 310 |
| Hepatitis B | 310 |
| Hepatitis C | 310 |

| | |
|------------------------------------|-----|
| Immunology of Hepatitis Infections | 310 |
| Hepatitis A and Hepatitis B | 311 |
| Hepatitis C | 311 |
| Immunization | 311 |
| Hepatitis A Vaccine | 311 |
| Hepatitis B Vaccine | 311 |
| Hepatitis C Vaccine Progress | 312 |
| Laboratory Diagnosis | 312 |
| Hepatitis A | 312 |
| Hepatitis B | 312 |
| Hepatitis C | 315 |

Chapter 20: Measles, Mumps, Rubella, and Varicella 322

| | |
|--------------------------------------|-----|
| Measles | 323 |
| Clinical Manifestations/Pathology | 323 |
| Immunology | 324 |
| Immunization | 324 |
| Laboratory Diagnosis | 325 |
| Mumps | 325 |
| Clinical Manifestations/Pathology | 325 |
| Immunology | 326 |
| Immunization | 326 |
| Laboratory Diagnosis | 326 |
| Rubella | 328 |
| Clinical Manifestations/Pathology | 328 |
| Immunology | 329 |
| Immunization | 329 |
| Laboratory Diagnosis | 329 |
| Varicella | 330 |
| Clinical Manifestations/Pathogenesis | 330 |
| Immunology | 334 |
| Immunization | 334 |
| Laboratory Diagnosis | 334 |

Chapter 21: Viruses III 339

| | |
|-----------------------------------|-----|
| Adenovirus | 340 |
| Clinical Manifestations/Pathology | 340 |
| Immunology | 341 |
| Immunization | 341 |
| Laboratory Diagnosis | 342 |
| Cytomegalovirus | 342 |
| Clinical Manifestations/Pathology | 343 |
| Immunology | 343 |
| Immunization Progress | 343 |
| Laboratory Diagnosis | 343 |
| Epstein Barr Virus | 347 |
| Clinical Manifestations/Pathology | 347 |
| Immunology | 347 |
| Immunization Progress | 348 |
| Laboratory Diagnosis | 348 |
| Influenza Virus | 349 |
| Clinical Manifestations/Pathology | 350 |
| Immunology | 350 |
| Immunization | 350 |
| Laboratory Diagnosis | 351 |

| | | | |
|--|------------|---|------------|
| Polio | 352 | <i>Laboratory Diagnosis</i> | 405 |
| <i>Clinical Manifestation/Pathology</i> | 352 | <i>Toxoplasma gondii</i> | 406 |
| <i>Immunology</i> | 354 | <i>Intestinal-Epithelial Stage</i> | 406 |
| <i>Immunization</i> | 354 | <i>Extra-Intestinal Stage</i> | 406 |
| <i>Laboratory Diagnosis</i> | 354 | <i>Clinical Manifestations/Pathology</i> | 406 |
| Chapter 22: Retroviral Infections | 359 | <i>Immunology</i> | 408 |
| General Features of Retroviruses | 360 | <i>Immunization Progress</i> | 408 |
| HIV | 360 | <i>Laboratory Diagnosis</i> | 408 |
| <i>Transmission of HIV</i> | 361 | Chapter 25: Autoimmune Disorders | 417 |
| <i>Clinical Manifestations/Pathology</i> | 361 | Autoimmunity | 418 |
| <i>Immunology</i> | 362 | Diabetes Mellitus | 421 |
| <i>Immunization Progress</i> | 363 | <i>Clinical Manifestations</i> | 421 |
| <i>Laboratory Diagnosis</i> | 364 | <i>Immunology</i> | 421 |
| Human T cell Leukemia Virus | 377 | <i>Laboratory Diagnosis</i> | 422 |
| <i>Clinical Manifestation/Pathology</i> | 377 | Rheumatoid Arthritis | 423 |
| <i>Immunology</i> | 377 | <i>Clinical Manifestations</i> | 423 |
| <i>Immunization Progress</i> | 377 | <i>Immunology</i> | 423 |
| <i>Laboratory Diagnosis</i> | 378 | <i>Laboratory Diagnosis</i> | 425 |
| Chapter 23: Fungal Infections | 382 | Systemic Lupus Erythematosus | 425 |
| <i>Aspergillus fumigatus</i> | 383 | <i>Clinical Manifestations</i> | 425 |
| <i>Clinical Manifestations/Pathology</i> | 383 | <i>Immunology</i> | 425 |
| <i>Immunology</i> | 384 | <i>Laboratory Diagnosis</i> | 426 |
| <i>Immunization Progress</i> | 384 | Graves' Disease | 426 |
| <i>Laboratory Diagnosis</i> | 384 | <i>Synthesis of T3 and T4: Normal State</i> | 427 |
| <i>Candida albicans</i> | 386 | <i>Regulation of T3 and T4: Normal State</i> | 427 |
| General Features | 386 | <i>Dysregulation of T3 and T4 Production in Graves' Disease</i> | 428 |
| <i>Clinical Manifestations/Pathology</i> | 386 | <i>Clinical Manifestations</i> | 428 |
| <i>Immunology</i> | 387 | <i>Immunology</i> | 428 |
| <i>Immunization Progress</i> | 387 | <i>Laboratory Diagnosis</i> | 428 |
| <i>Laboratory Diagnosis</i> | 388 | Hashimoto's Thyroiditis | 428 |
| <i>Cryptococcus neoformans</i> | 388 | <i>Clinical Manifestations</i> | 433 |
| <i>Clinical Manifestations/Pathology</i> | 389 | <i>Immunology</i> | 433 |
| <i>Immunology</i> | 389 | <i>Laboratory Diagnosis</i> | 433 |
| <i>Immunization Progress</i> | 390 | Pernicious Anemia | 433 |
| <i>Laboratory Diagnosis</i> | 390 | <i>Clinical Manifestations</i> | 433 |
| Chapter 24: Parasitic Infections | 394 | <i>Immunology</i> | 433 |
| Amebic Infections | 395 | <i>Laboratory Diagnosis</i> | 434 |
| <i>Clinical Manifestations/Pathology</i> | 395 | Chapter 26: Tumor Immunology | 438 |
| <i>Immunology</i> | 397 | Tumor Immunology | 439 |
| <i>Immunization Progress</i> | 397 | <i>Controversies Regarding Tumor Immunology</i> | 439 |
| <i>Laboratory Diagnosis</i> | 398 | Tumor Antigens | 440 |
| Echinococcosis: <i>Echinococcus granulosus</i> | 399 | <i>Tumor Specific Antigens</i> | 440 |
| <i>Intermediate Hosts</i> | 399 | <i>Tumor Associated Antigens</i> | 440 |
| <i>Definitive Hosts</i> | 399 | Immunological Responses to Tumors | 441 |
| <i>Clinical Manifestations/Pathology</i> | 400 | <i>Role of Macrophages</i> | 441 |
| <i>Immunology</i> | 400 | <i>Role of Natural Killer Cells</i> | 441 |
| <i>Immunization Progress</i> | 400 | <i>Role of B cells and Antibodies</i> | 442 |
| <i>Laboratory Diagnosis</i> | 400 | <i>Role of T Lymphocytes</i> | 442 |
| Malaria | 401 | Mechanisms by Which Tumors Evade the Immune System | 442 |
| <i>Life Cycle</i> | 401 | <i>Tumor Antigen Related Phenomenon</i> | 443 |
| <i>Clinical Manifestations/Pathology</i> | 403 | | |
| <i>Immunology</i> | 403 | | |
| <i>Immunization Progress</i> | 404 | | |

| | | | |
|--|------------|---|------------|
| <i>Major Histocompatibility Protein Related Phenomenon</i> | 443 | Type I Hypersensitivity Reactions | 467 |
| <i>T cell Related Mechanisms</i> | 443 | <i>Sensitization Phase</i> | 467 |
| Myeloid and Lymphoid Neoplasms | 444 | <i>Effector Phase</i> | 468 |
| <i>Leukemias</i> | 444 | Type II Hypersensitivity Reactions | 470 |
| <i>Lymphomas</i> | 446 | <i>Sensitization Phase</i> | 470 |
| <i>Plasma Cell Neoplasms</i> | 446 | <i>Effector Phase</i> | 470 |
| Chapter 27: Immunodeficiency Disorders | 451 | Type III Hypersensitivity Reactions | 472 |
| Immunodeficiency Disorders | 452 | <i>Sensitization Phase</i> | 472 |
| Primary Immunodeficiency Disorders | 453 | <i>Effector Phase</i> | 472 |
| <i>B cell Disorders</i> | 454 | Type IV Hypersensitivity Reactions | 473 |
| <i>T cell Disorders</i> | 456 | <i>Sensitization Phase</i> | 473 |
| <i>Combined T cell and B cell Disorders</i> | 456 | <i>Effector Phase</i> | 473 |
| <i>Phagocytic Disorders</i> | 458 | Laboratory Testing for IgE Antibodies | 474 |
| <i>Complement System Disorders</i> | 459 | Appendix A: Laboratory Biosafety | 481 |
| Secondary Immunodeficiency Disorders | 460 | Appendix B: DNA and RNA Viruses | 485 |
| <i>Viral Infections</i> | 460 | Appendix C: Textbook References | 487 |
| <i>Therapeutic Drugs</i> | 461 | Appendix D: Immunology References | 488 |
| <i>Malnutrition and Diseases</i> | 461 | Appendix E: Vaccine References | 493 |
| <i>Normal Physiological Changes</i> | 461 | Appendix F: Laboratory Techniques References | 495 |
| <i>Abnormal Production of Immunological Effectors</i> | 461 | Appendix G: List of Journals | 499 |
| Laboratory Tests | 461 | Appendix H: List of Web Sites | 501 |
| <i>Humoral Immunity Deficiencies</i> | 461 | Appendix I: Conferences | 502 |
| <i>Complement Deficiencies</i> | 461 | Glossary | 503 |
| <i>Cellular Immunity Deficiencies</i> | 462 | Index | 521 |
| <i>Phagocytic Deficiencies</i> | 462 | | |
| Chapter 28: Hypersensitivity | 466 | | |
| Hypersensitivity | 467 | | |

List of Cases

| | | |
|-------------------|--|------------|
| Chapter 1 | Innate Immunity | 12 |
| Chapter 2 | Penicillin Hypersensitivity | 20 |
| Chapter 3 | Selective IgA Deficiency | 35 |
| Chapter 4 | Chronic Granulomatous Disease. | 52 |
| Chapter 5 | Hyper IgM Syndrome | 67 |
| Chapter 6 | Tissue Matching | 84 |
| Chapter 7 | Human Immunodeficiency Virus. | 98 |
| Chapter 8 | Systemic Lupus Erythematosus | 117 |
| Chapter 9 | Immune Responses to Viral Infections | 130 |
| Chapter 10 | Nephelometry: Complement Components | 147 |
| Chapter 11 | Human Immunodeficiency Virus: Enzyme-linked Immunosorbent Assay | 165 |
| Chapter 12 | Syphilis: Rapid Plasma Reagin Test | 179 |
| Chapter 13 | Cellulose Acetate Electrophoresis: Multiple Myeloma | 201 |
| Chapter 14 | Latex Agglutination: Infectious Mononucleosis. | 224 |
| Chapter 15 | Human Immunodeficiency Virus: Western Blot | 247 |
| Chapter 16 | Syphilis: Fluorescent Treponemal Antibody Absorbed Test | 274 |
| Chapter 17 | Mycoplasma pneumoniae: Laboratory Investigation | 289 |
| Chapter 18 | Lyme Disease: Laboratory Investigation | 306 |
| Chapter 19 | Hepatitis B: Automated Laboratory Investigation | 321 |
| Chapter 20 | Rubella and Pregnant Women | 337 |
| Chapter 21 | Cytomegalovirus: Laboratory Investigation. | 357 |

| | | |
|-------------------|---|------------|
| Chapter 22 | Human Immunodeficiency Virus: Viral Load Tests | 380 |
| Chapter 23 | <i>Cryptococcus neoformans</i> | 393 |
| Chapter 24 | Malaria. | 415 |
| Chapter 25 | Rheumatoid Arthritis | 436 |
| Chapter 26 | Multiple Myeloma: Immunofixation | 449 |
| Chapter 27 | Primary Immunodeficiency | 464 |
| Chapter 28 | Transfusion Reaction | 478 |

List of Laboratory Techniques

| | | |
|---------------------------|--|-----|
| Laboratory Technique 3-1 | Generation of a B cell Hybridoma | 31 |
| Laboratory Technique 4-1 | Isolation of Mononuclear Cells from Peripheral Blood | 49 |
| Laboratory Technique 5-1 | Enumeration of B cells Using Flow Cytometry. | 61 |
| Laboratory Technique 5-2 | Reverse Hemolytic Plaque Assay | 62 |
| Laboratory Technique 6-1 | Tissue Matching: Mixed Lymphocyte Reaction (MLR) | 77 |
| Laboratory Technique 8-1 | Classical Pathway Complement CH ₅₀ Test. | 113 |
| Laboratory Technique 11-1 | Classical Competitive Binding Immunoassay (RIA) | 156 |
| Laboratory Technique 11-2 | Antibody Sandwich: Non Competitive Immunoassay | 159 |
| Laboratory Technique 11-3 | Enzyme-multiplied Immunoassay Technique (EMIT) | 162 |
| Laboratory Technique 12-1 | Radial Immunodiffusion Test | 172 |
| Laboratory Technique 12-2 | The Ouchterlony Method. | 176 |
| Laboratory Technique 13-1 | Classic Immunoelectrophoresis (IEP) | 194 |
| Laboratory Technique 13-2 | Crossed Immunoelectrophoresis. | 196 |
| Laboratory Technique 13-3 | Immunofixation Electrophoresis | 197 |
| Laboratory Technique 14-1 | Latex Particle Agglutination Test | 210 |
| Laboratory Technique 14-2 | Viral Hemagglutination Inhibition | 217 |
| Laboratory Technique 15-1 | Polymerase Chain Reaction | 241 |
| Laboratory Technique 15-2 | Southern Blotting. | 243 |
| Laboratory Technique 15-3 | Western Blotting | 244 |
| Laboratory Technique 16-1 | Rapid Reagin Plasma Test | 257 |
| Laboratory Technique 16-2 | The Fluorescent Treponemal Antibody Absorbed Test (FTA-ABS) | 259 |

| | | |
|---------------------------|---|-----|
| Laboratory Technique 16-3 | <i>Treponema pallidum</i> Hemagglutination Assay (TPHA) | 261 |
| Laboratory Technique 16-4 | Syphilis Rapid Test Device: Chromatographic Immunoassay. . . | 262 |
| Laboratory Technique 16-5 | Ligase Chain Reaction for <i>N. gonorrhoeae</i> | 265 |
| Laboratory Technique 18-1 | Immunochromatographic Test for <i>B. burgdorferi</i> | 294 |
| Laboratory Technique 18-2 | DIP-S-TICKS Assay to Detect IgM Anti- <i>S. typhi</i> Antibodies . . . | 303 |
| Laboratory Technique 19-1 | Total Anti-HAV Antibodies: Competitive Immunoassay | 313 |
| Laboratory Technique 19-2 | Using Recombinant HbsAg to Detect Anti-HBs Antibodies . . . | 317 |
| Laboratory Technique 19-3 | Detection of HbsAg Using a Modified Sandwich Assay | 318 |
| Laboratory Technique 20-1 | Detecting Anti-Mumps IgG Antibodies: ELFA | 327 |
| Laboratory Technique 20-2 | Capture Immunoassay to Detect Anti-Rubella IgM Antibodies. | 332 |
| Laboratory Technique 21-1 | Hybrid Capture Technique for Detecting CMV-DNA | 346 |
| Laboratory Technique 22-1 | Amplicor HIV-1 Monitor Assay: RT-PCR | 370 |
| Laboratory Technique 22-2 | HIV-QT Nucleic Acid Sequence Based Amplification: NASBA . . | 373 |
| Laboratory Technique 22-3 | HIV-1 RNA Assay: bDNA | 374 |
| Laboratory Technique 24-1 | Detection of <i>T. gondii</i> IgM Antibodies: Indirect Immunofluorescence | 409 |
| Laboratory Technique 24-2 | Detecting <i>T. gondii</i> IgM Antibodies: Capture Immunoassay. . . | 411 |
| Laboratory Technique 25-1 | Total T4: Competitive Binding Immunoassay | 430 |
| Laboratory Technique 25-2 | Measuring TSH: Immunoradiometric Assay (IRMA). | 431 |
| Laboratory Technique 28-1 | Chemiluminescent Enzyme Immunometric Assay for Total IgE. | 475 |