

Appreciation of Villa Styles

别墅豪宅风格赏析

佳图文化 编



Appreciation of
Villa Styles

別墅豪宅風格賞析

佳图文化 编



华南理工大学出版社
SOUTH CHINA UNIVERSITY OF TECHNOLOGY PRESS

·广州·

图书在版编目 (CIP) 数据

别墅豪宅风格赏析: 汉英对照 / 佳图文化编. — 广州: 华南理工大学出版社, 2014. 10
ISBN 978-7-5623-4400-1

I. ①别… II. ①佳… III. ①别墅 - 室内装饰设计 - 世界 - 图集 IV. ① TU241-64

中国版本图书馆 CIP 数据核字 (2014) 第 211252 号

别墅豪宅风格赏析

佳图文化 编

出版人: 韩中伟

出版发行: 华南理工大学出版社

(广州五山华南理工大学 17 号楼, 邮编 510640)

<http://www.scutpress.com.cn> E-mail: scutc13@scut.edu.cn

营销部电话: 020-87113487 87111048 (传真)

策划编辑: 赖淑华

责任编辑: 骆婷 赖淑华

印刷者: 利丰雅高印刷(深圳)有限公司

开本: 889mm×1194mm 1/12 印张: 28

成品尺寸: 285mm×285mm

版次: 2014 年 10 月第 1 版 2014 年 10 月第 1 次印刷

定价: 388.00 元

版权所有 盗版必究 印装差错 负责调换

CONTENTS

Neoclassical Style 新古典风格

- 002 Vantone Legacy Town 万通新新家园
- 012 GZLakes Show Flat of 21#D 广州金地荔湖城21#D户型样板房
- 020 Dragon Pool Villa Neoclassic Show Flat 龙池华府新古典样板房
- 034 The Peach Garden · Shen's Residence, Hangzhou 杭州桃花源沈宅
- 048 Metropolitan · Guiyang Vintage Style 贵阳·中航城复古

Art Deco Style Art Deco风格

- 062 Imperial Mansion (House Type A) 北京霞公府A户型
- 070 Imperial Mansion (House Type C) 北京霞公府C户型

Luxurious European Style 奢华欧式风格

- 082 Desperate Love · Mountain View Villa BLD. 48 倾城绝恋·虞景山庄48幢
- 094 Prince Mansion 华府世家

Simple European Style 简约欧式风格

- 108 Medici Palace 天正滨江别墅
- 122 GZLakes Show Flat of 7#C-a 广州金地荔湖城7#C-a户型样板房
- 128 Metropolitan · Guiyang Living at Provence 贵阳中航城·住在普罗旺斯里
- 138 Haide Park Residence 海德公园住宅

目录

Mixed Chinese-western Style 中西混搭风格

- 148 Changsha CSC Meixi Lake Era Villa Sample Room 长沙中建梅溪湖一号别墅样板间
160 Green Lark Gede Center Hotel A1 Villa 绿湖·歌德廷中央酒店A1别墅

New Chinese Style 新中式风格


- 176 Vanke Cheerful Bay Duplex House A2 重庆万科悦湾A2洋房复式
184 Metropolitan · Guiyang Chinese Monochromes 贵阳中航城·水墨画
198 Yu Villa 于舍

Modern Style 现代风格

- 212 Zhongshan Xiuli Lake Building 8 C type - Villa Sample House 中山秀丽湖项目8幢C型一别墅样板房
220 Logan Grand Riverside Bay, Villa Show Flat No. 61 龙光水悦龙湾 61#独栋别墅样板房
240 Under the Tree 树下
248 Windsor Castle Phase III, Dongguan 东莞绿茵温莎堡三期
262 Metropolitan · Guiyang City Harbor 贵阳·中航城港湾

Other Styles 其他风格

- 276 Changsha CSC Meixi Lake Era Villa
Sample Room (Baroque Love Song) 长沙中建梅溪湖一号别墅样板间(巴洛克恋曲)
292 Poly Silver Beach Villa Zone Q 保利银滩Q区别墅
304 Shenyang Zhonghai City (Sensational Simiane Style) 沈阳中海城(迷情施米雅)
320 Shunmai Villa Showroom, House Type 5 顺迈别墅样板间-五号户型

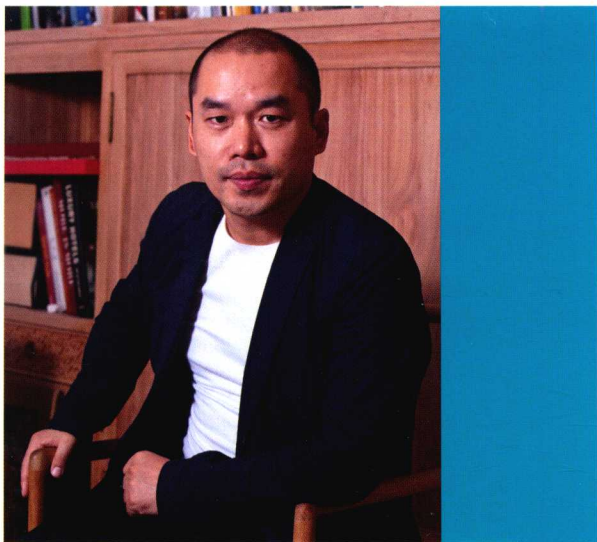


Neoclassical
Style

新古典风格

Vantone Legacy Town

万通新新家园



Designer: Wang Xiaogen
Interior Design: Beijing Genshang International Space Design Co., Ltd.
Location: Shunyi District, Beijing, China
Area: 365 m²

设计师: 王小根
室内设计: 北京根尚国际空间设计有限公司
项目地点: 中国北京市顺义区
面积: 365 m²

Keywords 关键词

French Neoclassical 法式新古典

Modern Abstract Art 现代抽象艺术

Oriental Culture Elements 东方文化元素

Furnishings/Materials 软装 / 材料

White Mix Oil Paint Wood Veneer, Hand-painted Wallpaper, Copper Bar, Block Wood Floor, Carpet

白色混油木饰面、手绘壁纸、铜条、拼花木地板、地毯

This project is a three-storey house. The first floor is public area, the second floor is master bedroom area, the third floor is the elderly room and children room area, the underground is the recreational area, elevator is designed to make it easy to go up and down stairs. Combining the French neoclassical and modern abstract art, this project also has some oriental elements. The elegant French classic blue and yellow silk fabric matched with abstract carpet patterns, painting, lamps and lanterns, presenting a delicate, exquisite, free and bold space style. The utilization of some oriental elements adds some generous and solemn elements in luxury elements.

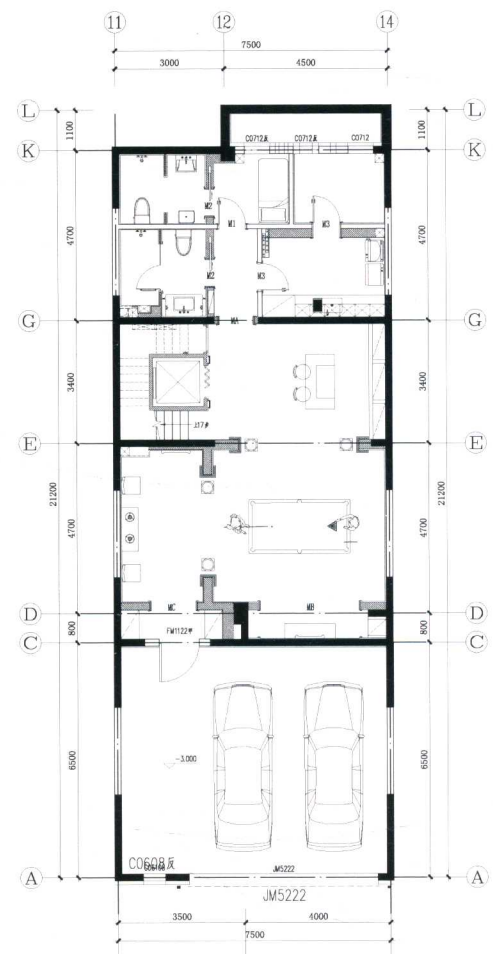
The whole space takes blue and yellow as the main tone, and takes black and white to neutralize the space color. The wall at the hallway takes the collocation of light color clapboard and distressed mirror. The front of the hallway is the kitchen, and the kitchen is enclosed by the breakfast table skillfully, being independent from the hallway and also connecting the hallway. The right dining room and living room use

four white "Doric Order" to make the space more generous, while the white columns also blend into the space naturally.

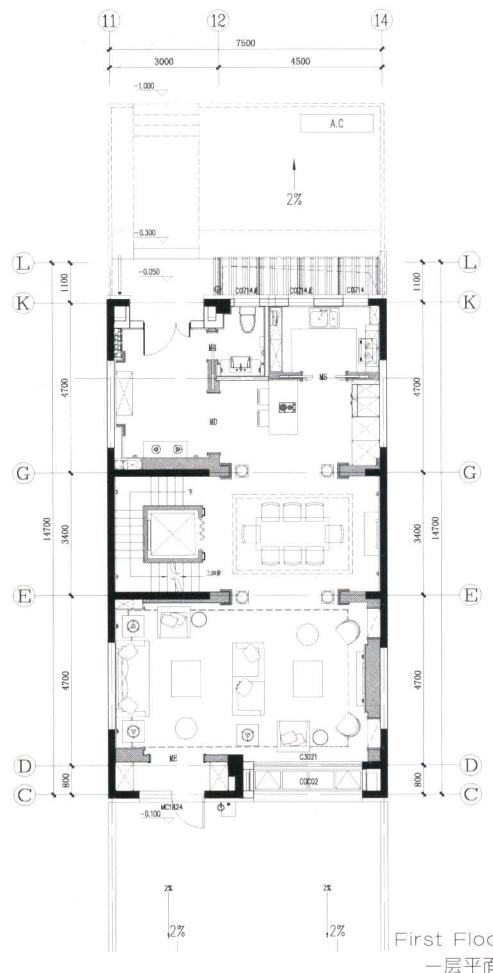
The space pays attention to smooth lines and visual transparent feeling. The living room with a 7.5 meter width has two meeting function areas, making full use of the room. The two function areas use the same bag and single sofa to keep the unity meanwhile keep independent.

The master bedroom area is placed on the second floor and is divided into left and right coherent parts by the hallway. The right is bedroom area and reading area, and the left is walk-in closet and main bathroom. The whole space is transparent and the function layout is reasonable. The low purity of blue and yellow makes the space more soft and comfortable; the abstract print of carpet is the modern art technique of expression, while the use of blue makes the modern elements blended into the whole space harmoniously.

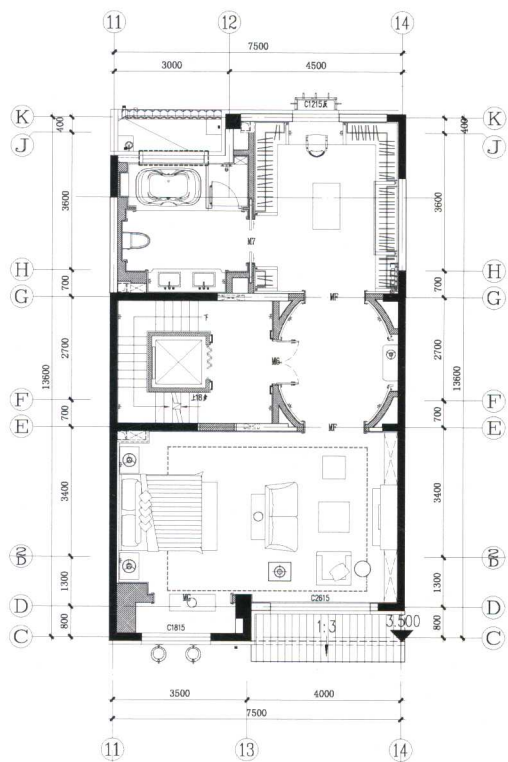




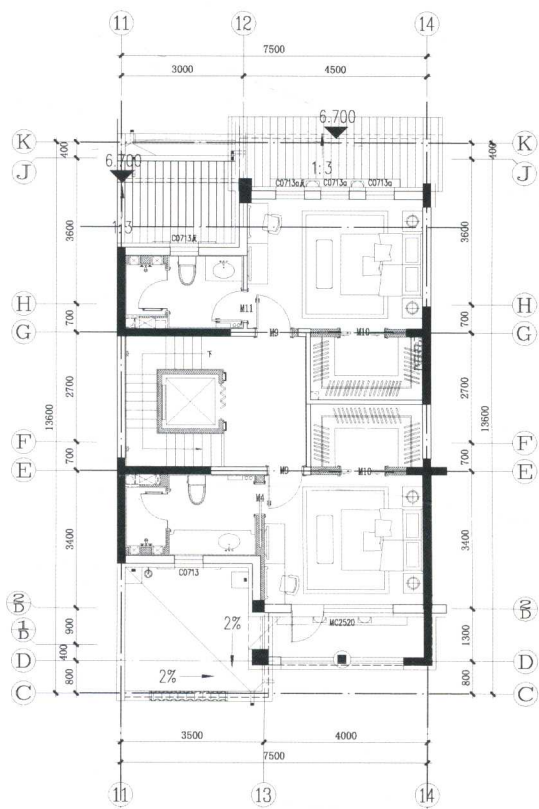
Basement Floor Plan
地下室平面布置图



First Floor Plan
一层平面布置图



Second Floor Plan
二层平面布置图



Third Floor Plan
三层平面布置图





项目户型为一栋上下三层与地下室：一层公共区、二层主卧区、三层老人房与儿童房，地下是休闲区，上下楼层设计了电梯来辅助行动。作为一个法式新古典格调与现代抽象艺术并重的别墅，项目同时伴有少量东方元素空间。优雅的法式经典蓝色、黄色丝质布艺与抽象地毯纹样、挂画、灯具相搭配，展现了精致、细腻兼具

自由、奔放的空间格调。少量东方文化元素的运用，在奢华中增添了些许大气与庄重。

整体空间以蓝、黄色为主基调，使用中性的黑、白色中和空间色彩。入口玄关处的墙面使用浅色护墙板与做旧镜面的搭配。门厅的前方是厨房，早餐台将厨房巧妙地围合起来，与门厅既独立又相连成整体。右侧的餐

试读结束：需要全本请在线购买：www.ertongbook.com

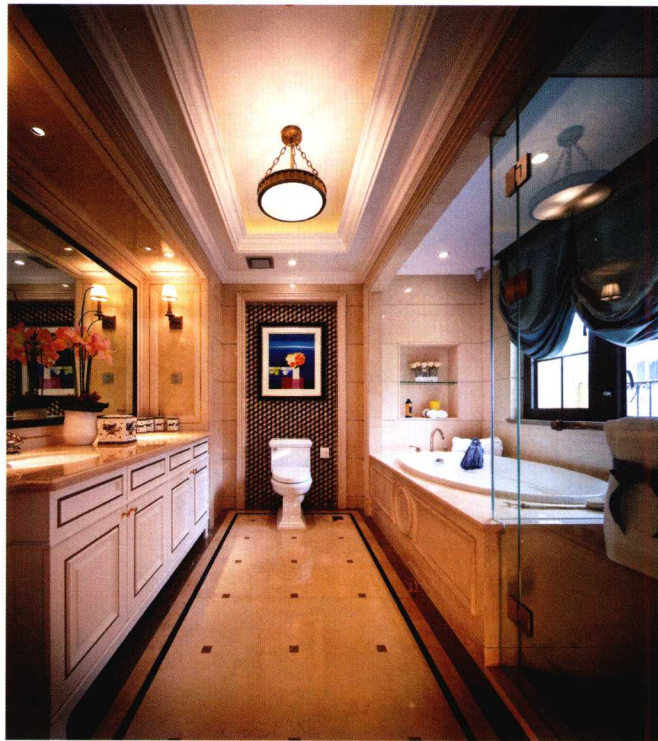


厅与客厅区域使用了4根白色“多里克式柱”使空间更加大气，白色柱体自然地融入空间。

空间注重顺畅的动线与视觉的通透感。横向7.5 m的客厅面积，设计有两个会客功能区，使利用率得到充分发挥。两组功能区利用相同的靠包、单人沙发，保持了空间的独立，同时统一为一个整体。

主卧区设置在二层，通过玄关将整个二层分为左右两个连贯的区域，右边为卧室区、阅读区，左边为步入式衣帽间和主卫间，使整个空间通透，功能布局安排合理。低纯度的蓝色、黄色的使用增加了空间的柔和与舒适。地毯的抽象图案是现代艺术的表现手法，而蓝色的使用使得现代元素和谐地融入整体空间。



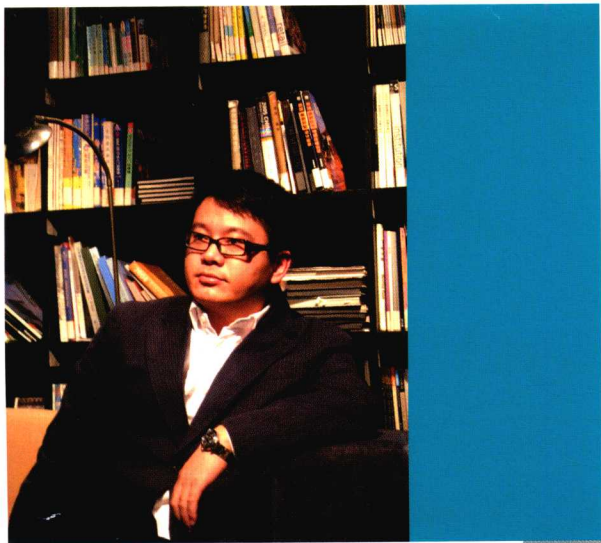






GZLakes Show Flat of 21#D

广州金地荔湖城 21#D 户型样板房



Designer: Lee Jianming
Interior Design: Dongguan Scale Design Co., Ltd.
Location: Zengcheng District, Guangzhou, Guangdong, China
Area: 547 m²

设计师: 李坚明
室内设计: 东莞市尺度室内设计有限公司
项目地点: 广东省广州市增城区
面积: 547 m²

Keywords 关键词

Neoclassical Style 新古典风格

Low-Key and Clam 低调沉稳

Sense of Belonging 归属感

Furnishings/Materials 软装 / 材料

Imported Marble, Emperor Gold, Wallpaper, Leather, Silver Mirrors, Rose Gold Stainless Steel

进口大理石、帝皇金、墙纸、皮革、银镜、玫瑰金不锈钢

In order to meet the requirements of the upstart class in Guangzhou, the project is oriented to be in neoclassical style. Adopting rich artistic deposits of the European culture, revealing the creative design concept from the furniture and soft furnishings, the project meets the aesthetic and cultural psychology requirements of the target residents, and expresses the new idea of comfortable lives and gives residents a sense of belonging and comfort.

The simple and clear lines outline the charm of the neoclassical style.

Cooperating with proper decoration, they are explaining the quiet and elegant lives quite well, which have been the first choice of whom are pursuing for high quality lives. Selecting neoclassical style, low-key and clam color tone for this project, its space design is quite luxury and superb. The designers abandon complicated decorations, but use the most classical elements and simple methods to show the sense of history and culture of the project. Lots of decorative materials are used for the unit, such as silver foil wallpaper, stone, wood, tiles and so on, since they are in a unified style, it still reveals the concise atmosphere.