



生活美学
软装陈设艺术

AESTHETICS OF LIFE

SOFT FURNISHING & DECOR ART

高迪国际 HI-DESIGN PUBLISHING 编
深圳市欣欣崢珺图书有限公司 策划
王丽娟 母琦 闵捷 何鑫 杜海燕 译



江苏凤凰科学技术出版社

AESTHETICS OF LIFE

SOFT FURNISHING & DECOR ART

生活美学 软装陈设艺术

高迪国际 HI-DESIGN PUBLISHING 编

王丽娟 母琦 闵捷 何鑫 杜海燕 译

图书在版编目（C I P）数据

生活美学：软装陈设艺术 / 高迪国际 HI-DESIGN
PUBLISHING 编；王丽娟等译. -- 南京：江苏凤凰科学
技术出版社，2015.5
ISBN 978-7-5537-4112-3

I. ①生… II. ①高… ②王… III. ①室内装饰设计
②室内布置—设计 IV. ①TU238 ②J525.1

中国版本图书馆 CIP 数据核字 (2015) 第 012348 号

生活美学——软装陈设艺术

编 者	高迪国际 HI-DESIGN PUBLISHING
译 者	王丽娟、母琦、闵捷、何鑫、杜海燕
责 任 编 辑	刘屹立
特 约 编 辑	林 溪
出 版 发 行	凤凰出版传媒股份有限公司 江苏凤凰科学技术出版社
出版社地址	南京市湖南路 1 号 A 楼，邮编：210009
出版社网址	http://www.pspress.cn
总 经 销	天津凤凰空间文化传媒有限公司
总经销网址	http://www.ifengspace.cn
经 销	全国新华书店
印 刷	深圳市新视线印务有限公司
开 本	889 mm×1 194 mm 1 / 12
印 张	36
字 数	302 000
版 次	2015 年 5 月第 1 版
印 次	2015 年 5 月第 1 次印刷
标 准 书 号	ISBN 978-7-5537-4112-3
定 价	628.00 元（精）

图书如有印装质量问题，可随时向销售部调换（电话：022-87893668）。



CONTENTS

目录

26

REMODELING LUXE

重塑奢华之家

42

CHIC
TRANSFORMATION

时尚的转型

52

ALL IN THE FAMILY

一切尽在家中

70

MALVERN RESIDENCE

马尔文小镇的住宅

78

MILL NECK

MILL NECK 公寓

88

CARON STREET

卡伦街别墅

96

REGAL HEIGHTS RESIDENCE

君威山庄住宅

106

HOLLYWOOD
BEACH RESIDENCE

好莱坞海滩住宅

118

2X2=5

莫斯科多空间住宅

126

ELEVATED SPACE

旧金山高品位别墅

136

PORTOFINO

波托菲诺住宅

146

TAKAHASHI PENTHOUSE

TAKAHASHI 顶层豪华公寓

154

OXFORD 49

牛津 49 号住宅

164

15 CENTRAL PARK WEST

中央公园西路 15 号公寓

176

BARKLI VIRGIN HOUSE

巴克利维京公寓

188

SOHO APARTMENT

小型及家庭办公公寓

194

CANARIO RESIDENCE

卡纳里奥公寓

200

HAMPTONS SHOW
HOUSE, 2013

汉普顿 2013 年样板间

206

CASA PERALES

卡萨·佩拉尔斯住宅

214

EUROPEAN CHIC
CALIFORNIA STYLE

欧式时尚加州风情住宅

224

PRIVATE RESIDENCE

私人住宅

230

ROTTERDAM RESIDENCE

鹿特丹公馆

236

SAILOR'S SPACE

航海者之家

244

SKYHOUSE

天宇阁公寓

252

CASA COR 2014

2014 “色彩之家”室内设计展

262

MONDRIAN'S
WINDOW

蒙德里安绘画风格之窗

270

NS HOUSE

NS 公馆

282

MAISON D' ELEGANCE

优雅之屋

288

MEADOW
WOOD ESTATE

草木庄园

296

BARBIZON 63
RESIDENCE

巴比松 63 号住宅

304

MANGET RESIDENCE

玛格特住宅

314

A GARDEN
HILLS HOME

山景花园别墅

322

A FAMILY APARTMENT

家庭公寓

328

THE PLAZA RESIDENCE

广场公寓

334

BARKLI PARK

巴克利庄园

340

SKY HIGH GLAMOUR

迷人的空中公寓

344

MYER'S PARK
RESIDENCE

迈尔公园住宅

358

A FAMILY APARTMENT IN
MOSCOW

莫斯科家庭公寓

364

SEXY, DREAMY,
DRAMATIC

迷人的梦幻住宅

378

SOUTH OF FRANCE

法国南部别墅

390

THE HOUSE OF JOY

欢乐之家

398

YOO ISTANBUL

由 YOO 设计公司打造的伊斯坦
布尔住宅

406

LOFT DO CASAL

复式公寓

412

BEAUTY IS IN THE DETAIL

美在细节之中

420

DE WATERKANT

沃特坎特复式公寓

AESTHETICS OF LIFE

SOFT FURNISHING & DECOR ART

生活美学

软装陈设艺术

高迪国际 HI-DESIGN PUBLISHING 编
王丽娟 母琦 闵捷 何鑫 杜海燕 译

图书在版编目（C I P）数据

生活美学：软装陈设艺术 / 高迪国际 HI-DESIGN
PUBLISHING 编；王丽娟等译．— 南京：江苏凤凰科学
技术出版社，2015.5
ISBN 978-7-5537-4112-3

I．①生… II．①高… ②王… III．①室内装饰设计
②室内布置—设计 IV．① TU238 ② J525.1

中国版本图书馆 CIP 数据核字 (2015) 第 012348 号

生活美学——软装陈设艺术

编 者	高迪国际 HI-DESIGN PUBLISHING
译 者	王丽娟、母琦、闵捷、何鑫、杜海燕
责 任 编 辑	刘屹立
特 约 编 辑	林 溪
出 版 发 行	凤凰出版传媒股份有限公司 江苏凤凰科学技术出版社
出版社地址	南京市湖南路 1 号 A 楼，邮编：210009
出版社网址	http://www.pspress.cn
总 经 销	天津凤凰空间文化传媒有限公司
总经销网址	http://www.ifengspace.cn
经 销	全国新华书店
印 刷	深圳市新视线印务有限公司
开 本	889 mm×1 194 mm 1 / 12
印 张	36
字 数	302 000
版 次	2015 年 5 月第 1 版
印 次	2015 年 5 月第 1 次印刷
标 准 书 号	ISBN 978-7-5537-4112-3
定 价	628.00 元（精）

图书如有印装质量问题，可随时向销售部调换（电话：022-87893668）。



SOFT FURNISHING & DECOR ART





1. Haute House Bellissimo Sofa

Exclusively ours.

Alder wood frame.

Polyester upholstery.

86"W x 32"D x 35"T; seat, 22"D x 18"T.

Handcrafted in the USA of imported materials.

Boxed weight, approximately 180 lbs.

2. Massoud Oasis Sofa

Center a room with the bold lines and strong details of this ivory sofa.

Neutral ivory gains interest from a mix of textures.

Covered in tufted cotton/rayon velvet; includes two fringed pillows and one leather pillow.

Hardwood frame, mortise-and-tenon construction, and suspended-coil spring system provide durable comfort.

103"L x 43"D x 51"T with 20"T seat and 27"T arms.

Made in the USA.

Boxed weight, approximately 290 lbs.

HOME DECORATIONS MAKE GREAT TABLE TOPPERS

桌上陈设是一门艺术

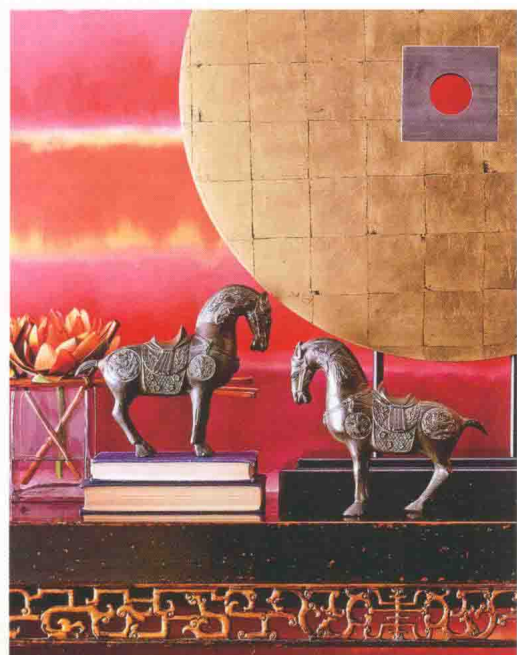
Two Antique Brass Horse Statues

Sleek, powerful Han-style brass horse statues wear ornately decorated trappings. Imported.

Horses retain original finish with touched up paint.

From the Shanxi region of China, c. 1831-1861.

Each, 9.75"W x 3.25"D x 8.75"T.



John-Richard Collection Bougainvillea Bouquet

Spice up your decor with this vibrant bougainvillea arrangement. Imported. Handcrafted.

Clear glass bowl.

Poly silk bougainvillea vines.

Acrylic "water".

33"W x 15"D x 22"T.

From the John-Richard Collection.



Jonathan Adler Zebra Dish

Safari chic, this dish is a mini homage to the majestic zebra and adds the perfect pop of graphic glamour to bedside table, desk top, bathroom, or table setting.

Made of high-fired porcelain.

Sold individually; each, 6"W x 4"D x 0.5"T.



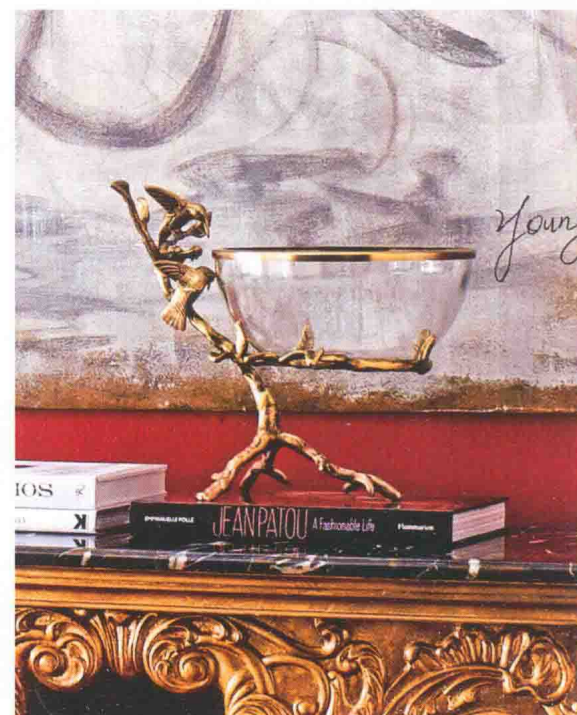
John-Richard Collection

Sculpturally beautiful, this decorative piece features a brass-rimmed glass bowl held within a stand comprising a brass branch complete with birds and leaves.

From the John-Richard Collection.

Handcrafted of brass and glass.

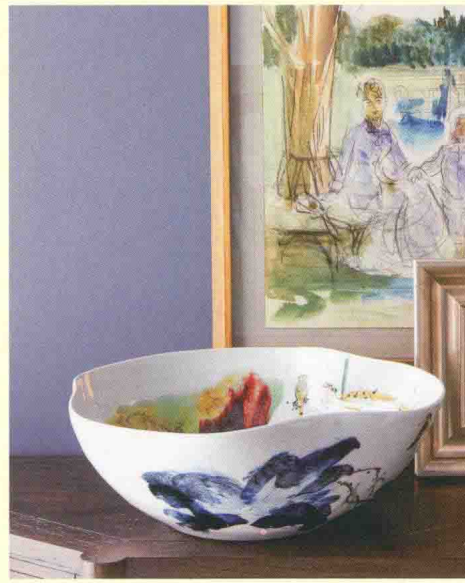
For decorative use only.





NM EXCLUSIVE Plumes & Feathers Giclee

Exclusively ours. Elegant, stately, and serene, this still life portrait of a regal peacock adds an engaging pop of cool color to the room. Giclee.
Brush gel finish.
47Sq. x 1.5D.
Made in the USA.
Boxed weight, approximately 33.2 lbs.



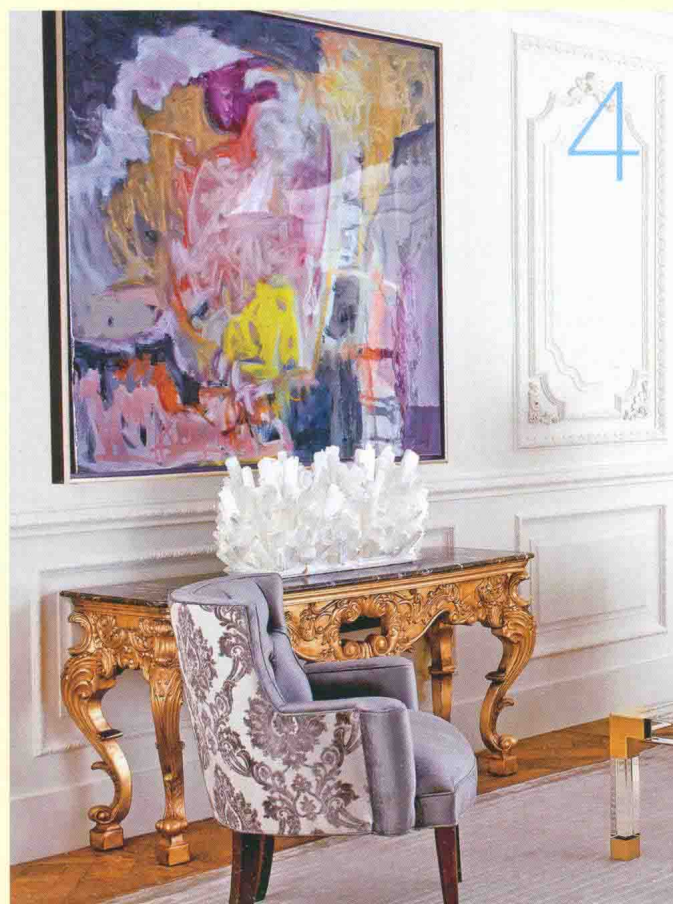
John-Richard Collection

With an interior as beautiful as its exterior, this curled-rim bowl begs to be displayed on a mirrored tray or riser so that it can be admired from all sides. From the John-Richard Collection. Handcrafted of porcelain. Designs in blue, oxblood, and green hand painted on white background before porcelain is fired. 19"Dia. x 7"T.



SOFA CAN CHANGE THE ATMOSPHERE OF LIVING ROOM

沙发能够改变起居室的氛围



3. John-Richard Collection Mosaic Mirror

Everything Sale: 25% ~ 30% off entire site, 25% off furniture, 30% off everything else. Savings reflected in checkout. Sale ends November 12, 2014, at 8:00 a.m. CT. For details, click here. The glamour is all in the geometric design of this mirror. Handcrafted mirror framed mirror pieces enhanced by silver and gold leaf beaded edges. 35"W x 2"D x 49"T. Can be hung vertically or horizontally. Boxed weight, approximately 44 lbs.

4. John-Richard Collection Whippoorwill Abstract

Kent Walsh's original abstract is presented as a giclee on canvas with a carefully hand applied deep gloss vitreous finish. The piece floats in a deep, narrow frame with a purple inset and a soft-silver finish. From the John-Richard Collection. Giclee on canvas. Hand-applied deep gloss vitreous finish. Pine frame with purple inset and soft-silver finish. Framed without glass. 58"Sq. x 2"D. Handcrafted in the USA. Boxed weight, approximately 31 lbs.



COMFORTABLE FURNITURE HELPS FEEL RELAXED

舒适的家具能够让人感觉放松



John-Richard Collection "Keeping Watch" Heron Prints

This pair of prints celebrate the iconic silhouette of the familiar Great Blue Heron. Each print is hand finished with a wide band of gold leaf across its base. Sold individually; "Keeping Watch I" shown on left; "Keeping Watch II" shown on right.

Paper print with gold-leaf border.

Wood frame with ivory and gold-leaf finish.

Framed under glass.

Sold individually; each, 28"W x 2"D x 40"H.

Made in the USA.

Boxed weight for each print, approximately 14 lbs.

John-Richard Collection "Splat!" Abstract

Make of it what you will, this dynamic abstract represents the artist's offbeat sense of humor.

From the John-Richard Collection.

Original abstract by Cai Zhicheng. Each may vary slightly.

Oil on canvas.

Glazed-pewter pine floater frame.

50"Sq. x 2"D.

Boxed weight, approximately 20 lbs.





1. Blue & Gold Pillows

Intricately patterned pillows in shades of blue and gold add a regal touch to room decor.

Loop-and-knot design pillow (shown in front) made of cotton/viscose; 22" x 14".

Ribbon square pillow (shown in center) handcrafted of polyester; 20"Sq.

Medallion-center pillow (shown in back) made of cotton/viscose. 22"Sq.

All have zipper closures and feather/down inserts.

2. Haute House Arabella Sofa

Exclusively ours.

With its gracefully scalloped back, arms, and apron and deep tufting, this eye-catching sofa makes quite a statement. Back is finished so it can float in the middle of a room or become the focal point for a conversation area.

Alder wood frame.

Polyester velvet upholstery.

92"W x 41.5"D x 36.5"T; seat, 19"T.

Handcrafted in the USA of imported materials.

Boxed weight, approximately 251 lbs.

John-Richard Collection Forged Iron Sculpture

A bit modern, a bit rustic, this deceptively simple, free-form sculpture makes a dramatic statement wherever you place it. From the John-Richard Collection.

Hand forged of iron.

Hand finished in black with antique-gold accents.

Finished on all sides.

13"W x 13"D x 28"T.

Boxed weight, approximately 28.9 lbs.



Beaded Floor Mirror

This mirror-framed mirror provides illusions of space and fills the room with light.

Frame is antiqued; mirror is beveled.

Antiqued beading trim.

44"W x 4"D x 79"T.

Boxed weight, approximately 120.6 lbs.



Haute House Lena Mirrored Sofa

Exclusively ours.

Inset mirrored panels on the arm fronts; tufting on the inside back, inside arms, and seating; shapely bracket feet. This sofa brings an abundance of glamour to any room.

Alder wood frame.

Polyester upholstery.

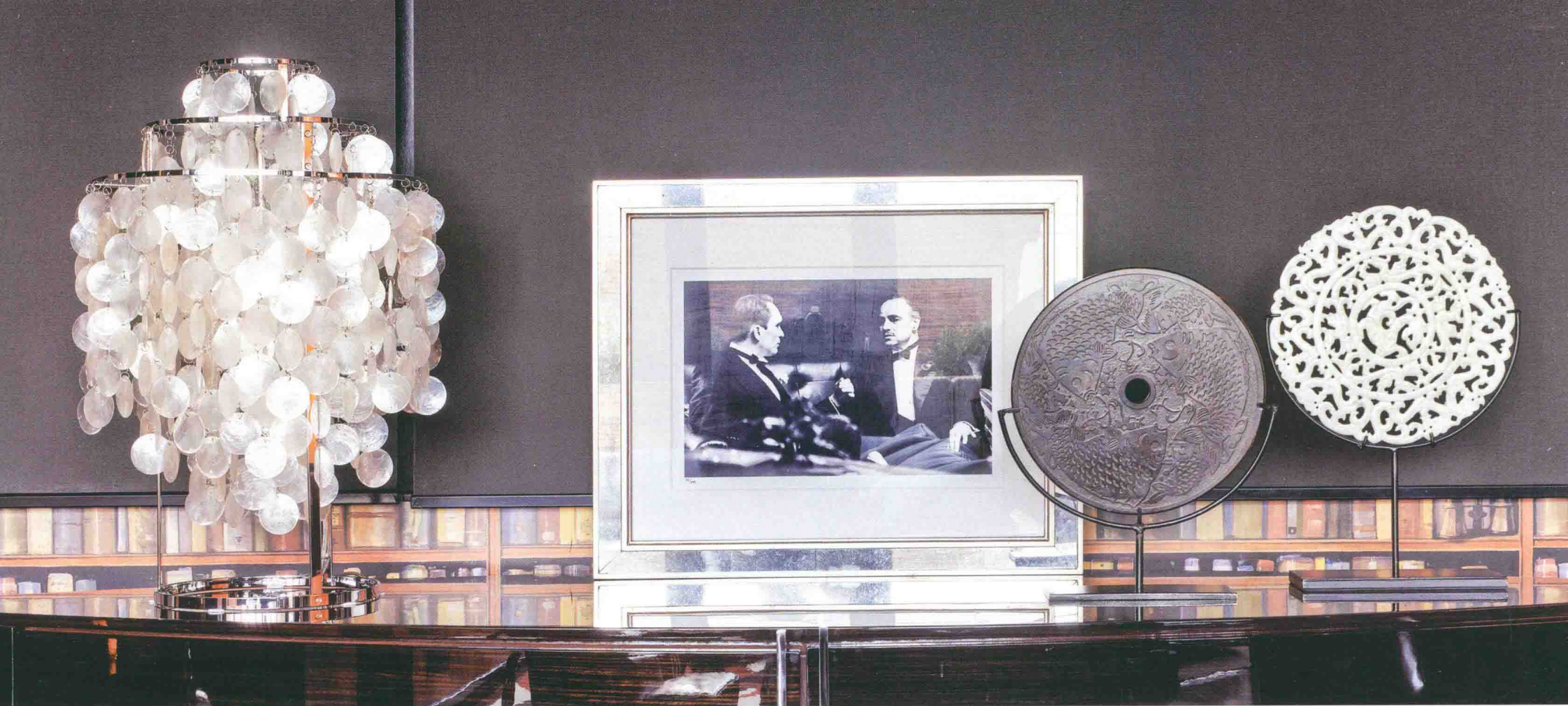
Hand-painted finish.

102"W x 41"D x 32"T. Seat, 27"D x 19"T.

Handcrafted in the USA of imported materials.

Boxed weight, approximately 288 lbs.





HAVE FUN WITH WALL DECOR

装饰墙壁也是一件乐事



1



2

1. Haute House Arabella Sofa

Exclusively ours.

With its gracefully scalloped back, arms, and apron and deep tufting, this eye-catching sofa makes quite a statement. Back is finished so it can float in the middle of a room or become the focal point for a conversation area.

Alder wood frame.

Polyester velvet upholstery.

92"W x 41.5"D x 36.5"T; seat, 19"T.

Handcrafted in the USA of imported materials.

Boxed weight, approximately 251 lbs.

2. John-Richard Collection

Beveled-Frame Mirror.

Rectangles of mirrored glass mix with simple lines to frame this elegant mirror.

Made of beveled glass and resin with a silver and golden finish.

Hang vertically or horizontally.

36.5"W x 1.5"D x 48"T.



Haute House "Bently" Black Tufted Sofa

Tufting on the arms and apron add texture to this classic black contemporary sofa. From Haute House?.

Handcrafted.

Alder wood frame.

Upholstered in acrylic/polyester.

90"W x 40"D x 28"T.

Seat height, 18"T.

Nebula Iron Mirror

We love the synergy this impressive mirror brings to the room. Its array of overlapping ellipses create the illusion of perpetual motion.

Handcrafted of iron, wood composite, and mirrored glass.

37.5"Dia.

Weight, 11 lbs.

Boxed weight, approximately 20 lbs.



MacKenzie-Childs

Bring the freshness of spring to the room with this fun tasseled pillow. Watercolor tulips reverse to Tulip Check.

Accented with four bright tassels and coordinating checked cording.

Handcrafted of linen with cotton/rayon tassels.

Zipper closing.

Due to the nature of handcrafting, pillows may vary.

17"Sq.



ADD SOME NEUTRAL-COLORED FURNITURE

添置一些自然色系的家具吧

1. Russell Copper-Foil Mirror

Exclusively ours.

Four antiqued mirror panels with copper-foil decoration surrounding central plain mirror.

Wood composite backing.

Mandala pattern.

36"Dia. x 2.25"D.

Weight, 24.2 lbs.

Boxed weight, approximately 30 lbs.

2. "Adel" Floor Mirror

A dramatic, oversized mirror is made all the more eye-catching by its hand-forged, hand-hammered metal frame with a lightly distressed, burnished-bronze finish with gold highlights.

Mirror is beveled.

Hanging hardware included.

41"W x 1"D x 71"T.

3. NM EXCLUSIVE Starburst Mirror

As much wall decor as mirror, this delightful piece employs a series of overlapping and interlocking loops to form the starburst pattern of its frame.

Handcrafted of iron, resin, wood composite, and mirrored glass.

Hand-painted antiqued-gold finish.

34"Dia. x 0.75"D.

Boxed weight, approximately 22 lbs.

4. "Mingling Slats" Mirror

A frame of mirrored slats arranged in alternating up and down fashion lends depth and interest to this round mirror.

Wood composite back.

42"Dia. x 2"D.

5. Arteriors Apollo Wall Medallions

Wall medallions offer texture and interest as well as a nice departure from the expected. Each is made of wood with a golden finish and has a bracket on back for hanging.

Handmade of mango wood.

Small medallion, size varies from 12"Dia. x 3.25"D to 12"Dia. x 4"D. Boxed weight, approximately 6.6 lbs.

Medium medallion, size varies from 18"Dia. x 2.5"D to 12"Dia. x 3"D. Boxed weight, approximately 10.3 lbs.

Large medallion, size varies from 24"Dia. x 2"D to 25"Dia. x 2"D.

Boxed weight, approximately 15.9 lbs.

6. John-Richard Collection Blue & White Hydrangea Faux-Floral Arrangement

Symmetry and harmony abound in this delightful arrangement of faux blue and white hydrangeas. A classic blue-and-white porcelain bowl completes the look. The 360-degree designs assures that the arrangement is beautiful from any angle.

From the John-Richard Collection.

Handcrafted.

Polyester-silk floral stems.

13"Dia. x 9"T.

Made in the USA of imported materials.

7. Mirrored Collage Frame Gallery

Exclusively ours. Set of 7 frames holds a total of 16 photos, perfect for a grouping of family, vacation, or special-occasion images.

Handcrafted of wood and glass.

Hand-painted finish.

Set includes one 13" x 40" frame, one 15" x 17" frame, one 11" x 27" frame, two 12" x 22" frames, and two 11" x 13" frames.

Imported.

Boxed weight, approximately 42.8 lbs.

8. Aviva Stanoff

A celebration of the natural objects that inspired them, these hand-dyed, etched, and painted pillows elevate basic accent pieces to statement-piece status.

Alchemy pillow with lace detailing (shown in front) is merino wool backed with muslin; silk lined. 20"W x 4"D x 12"T.

Ombre peacock pillow (shown in middle) is hand-dyed velvet lined and backed with silk. 20"Sq. x 4"D.

Lace-front pillow (shown in back) has silk lining and back. 18"Sq. x 4"D.

All have hidden zippers and feather/down fill.

9. Peacock Wall Cabinet

This versatile piece acts as both wall cabinet and art when you want to hide away the television.

Handcrafted of hardwood and wood composite.

Lacquered hand-painted finish.

54"W x 6.5"D x 37.5"T; holds up to 49"W x 5"D x 32.5" TV.

Weight, 50 lbs.

Boxed weight, approximately 60 lbs.