

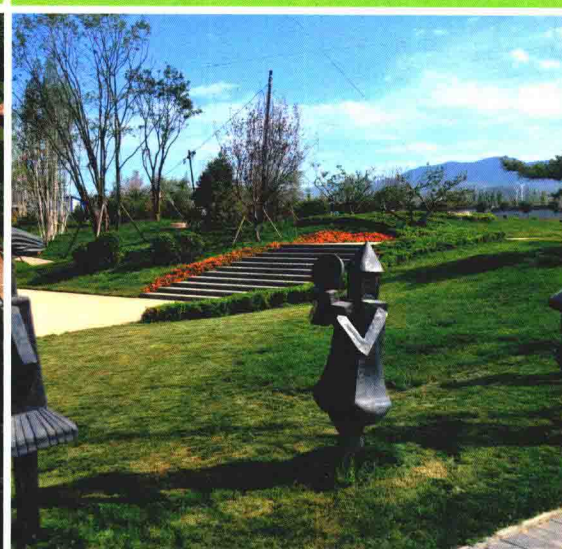
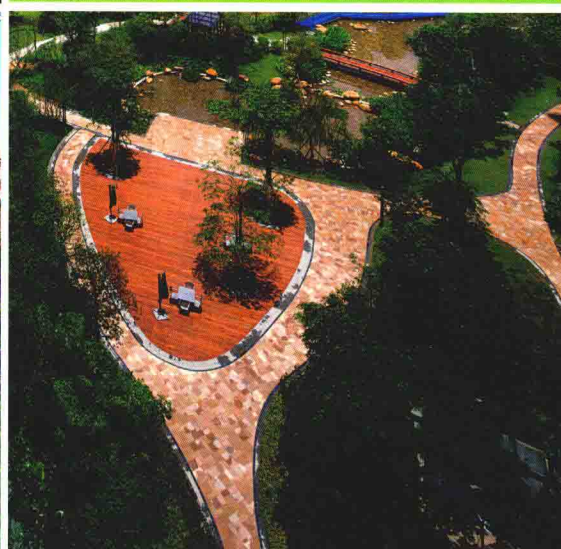


# 景观中国

## LANDSCAPE CHINA

佳图文化 编

2





# 景观中国

## **LANDSCAPE CHINA**

佳图文化 编

2



中国林业出版社  
China Forestry Publishing House

## 图书在版编目 ( C I P ) 数据

景观中国 . 2 / 佳图文化主编 . -- 北京 : 中国林业出版社 , 2016.9

ISBN 978-7-5038-8563-1

I . ①景… II . ①佳… III . ①景观设计 - 案例 - 中国 IV . ① TU986.2

中国版本图书馆 CIP 数据核字 (2016) 第 130038 号

中国林业出版社 · 建筑家居出版分社

责任编辑: 李 顺 李 辰

出版咨询: ( 010 ) 83143569

---

出 版: 中国林业出版社 ( 100009 北京西城区德内大街刘海胡同 7 号 )

网 站: <http://lycb.forestry.gov.cn/>

印 刷: 广州中天彩色印刷有限公司

发 行: 中国林业出版社

电 话: ( 010 ) 83143500

版 次: 2016 年 9 月第 1 版

印 次: 2016 年 9 月第 1 次

开 本: 889mm × 1194mm 1 / 16

印 张: 22.5

字 数: 200 千字

定 价: 308.00 元

# Preface 前言

As the sequel of *Beautiful China I*, *Beautiful China II* selected the representative landscape for housing and public business in China and continued to professionally analyze these “beautiful” cases in detail from multiple perspectives. Content layout starts from the aspects of the keywords, features, and design concept, providing a large number of professional technical drawings, with rich and detailed information. Our effort is to give landscape designers and practitioners new vision and inspiration, create more beautiful landscape, and achieve the Chinese dream of constructing beautiful China and realizing the Chinese nation's sustainable development in landscape design.

《美丽中国 II》是《美丽中国 I》的延续之作，精选了国内具有代表性的住宅景观以及公共商业景观，继续从多角度详细且专业地分析了这些“美丽”的景观案例。内容编排上，分别从景观案例的关键点、亮点、设计理念等方面入手，配合大量的专业技术图纸，资料丰富而详实。我们的努力是为了给予设计师及景观从业者新的视觉、新的灵感，以创作出更多更美的景观，在景观设计上共同实现建设美丽中国、实现中华民族永续发展的中国梦。

# CONTENTS



## EUROPEAN STYLE

### 欧式风格

- 002 LANDSEA Green Residential Area, Nanjing 南京朗诗绿色街区
- 010 Chuangji Nanmei Holiday Phase II, Hainan 海南创基南美假日二期
- 014 Tudor Dynasty 长泰东郊御园
- 020 Suzhou Wharf Bellagio 苏州九龙仓碧堤半岛
- 026 Dongcheng King Mountain, Qingyuan 清远东城御峰
- 034 The City Star in Shangyu District 上虞城市之星
- 040 Railway Real Estate, Flower County 中铁置业花溪渡售楼处及园区
- 048 Chengdu Evergrande, Royal Scenic Peninsula 成都恒大御景半岛
- 052 Yantai Banyan Bay 烟台葡醍海湾
- 060 Hisense · Hotspring Dynasty 海信·温泉王朝
- 068 Chengdu Huayi, Live in Sunshine 成都华邑·阳光里
- 074 St-Moritz 圣莫丽斯
- 082 Excellence · Cote Dazur 卓越·蔚蓝海岸
- 088 Eastern Provence 东方普罗旺斯
- 096 Xinxiang Lvdu · Windsor Castle 新乡绿都·温莎城堡
- 104 Welsh Spring 威尔士春天



## SOUTHEAST ASIAN STYLE

### 东南亚风格

- 112 World Coast 君华天汇
- 120 Times Peanut II 时代花生二期
- 126 Hainan Future Villa 海南富力湾
- 134 Guang Group · Valley in City 光耀·城市山谷
- 140 Western Guangdong Kingkey City 西粤京基城
- 148 Nanning, Indonesian Garden 南宁印尼园



# 目录

- 156 Landscape Design for SUNUNI Royal Garden, Foshan 佛山兆阳御花园景观设计
- 162 Zhenro • Luxury Mansion Blue Bay, Putian 正荣莆田御品兰湾高档住宅区
- 172 Jiewei • Eastern Mansion 杰伟 • 尚东紫御
- 178 JOINV the Gold Bund 卓辉泉州金色外滩滨江高档社区
- 186 Nanning Ronghe Central Park 南宁荣和中央公园

## MEDITERRANEAN STYLE

### 地中海风格



- 196 Zhuzhou Riverfront Garden 株洲滨江花园
- 204 Shanghai Longfor Affecting Yard 上海龙湖好望山
- 210 Kaisa Golden World, Ronggui 佳兆业容桂金城天下

## ART DECO STYLE

### ART DECO 风格



- 220 CITIC Future City 中信未来城
- 228 United Kingdom Palace 永定河 • 孔雀城英国宫

## OTHER STYLES

### 其他风格



- 234 Sanctuary, AVIC Kunming 昆明中航 • 云玺大宅
- 242 Zhongda • Hangzhou West Peninsula 中大 • 杭州西郊半岛
- 250 Tianlu Villa, Nanchong 南充天庐别墅
- 258 Galaxy Dante 星河丹堤



**Lush Vegetation**

植被浓密

**Magnificence**

气势宏大

**Exquisite Details**

细部精美

KEYWORDS 关键词

Atrium Landscape  
中庭景观

European Atmosphere  
欧洲气息

Venice Waterscape  
威尼斯水景

European Style  
欧式风格

Location: Shaoxing, Zhejiang  
Landscape Design: L & A Design Group  
Landscape Area: 73,000 m<sup>2</sup>

项目地点: 浙江省绍兴市  
景观设计: 奥雅设计集团  
景观面积: 73,000 m<sup>2</sup>

# LANDSEA Green Residential Area, Nanjing 南京朗诗绿色街区

## FEATURES 项目亮点

The design has focused on creating a beautiful skyline. By borrowing landscapes from Shizha Lake and creating the atrium landscapes, it allows all units to have beautiful landscape views.

朗诗绿色街区充分考虑城市天际线美观效果、石闸湖自然景观，对内充分利用中庭景观，尽量做到“户户看景、户户优势”资源最大化。

## Overview

Buildings of LANDSEA Green Residential Area are designed in modern simple style, looking elegant and fashionable. The development has first combined sci-tech system with natural eco environment to create a comfortable living environment. Located within close proximity to the lake and park, and supported by the planned 60,000 m<sup>2</sup> commercial facilities, it enjoys complete facilities for recreation, entertainment, shopping, F&B, etc.

## 项目概况

朗诗绿色街区建筑设计风格为现代简约式，整体简洁明朗，紧跟现代潮流。项目首次融合了科技系统与自然环境，创造由内而外的舒适环境。与湖毗邻，与公园为伴，更有 6 万 m<sup>2</sup> 的大型商业配套系统规划，休闲、娱乐、购物、餐饮等生活设施一应俱全。





## Design Objective

The design has focused on creating a beautiful skyline. By borrowing landscapes from Shizha Lake and creating the atrium landscapes, it allows all units to have beautiful landscape views.

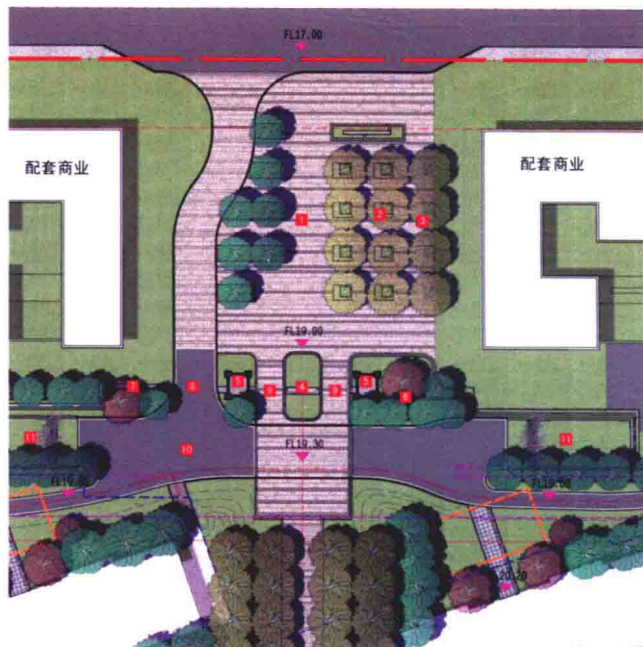
## 设计目标

朗诗绿色街区充分考虑城市天际线美观效果、石闸湖自然景观，对内充分利用中庭景观，尽量做到“户户看景、户户优势”资源最大化。





Site Plan 总平面图



Main Entrance Plan 主入口平面图







## Landscape Planning

1. A 310 m-long central landscape avenue dialogues with the waterscape, reminding people of the Italian Water Towns of the 18th century.

2. A 6,000 m<sup>2</sup> swimming pool with pure blue water in the garden will allow people to enjoy cool summers.

3. Strolling along the 340 m waterfront avenue in the morning or at dusk, one can not only breathe more fresh air but also get closer to water and have good luck.

4. The 11,000 m<sup>2</sup> Victorian central courtyard is unique with classical European-style elegance and harmonious neighborhood atmosphere.
5. There are about 2,000 herbaceous plants of more than 86 species to create a sea of green plants and fragrant flowers.

6. The 5,000 m<sup>2</sup> Orchid Pavilion Garden features zigzag paths and winding streams, providing a best place for people to have a walk.

7. The fantastic 5,500 m<sup>2</sup> Wisteria Garden is ideal for lovers and couples. The drooping wisteria vines with purple blossoms form a magnificent curtain, allowing people to experience the eternal romance when walking by.

## 景观规划

1. 310 m 的威尼斯中央景观道，水景辉映，使人仿佛置身于 18 世纪的意大利水城。

2. 6 000 m<sup>2</sup> 的沁水花园泳池，净蓝池水营造凉爽夏日感。

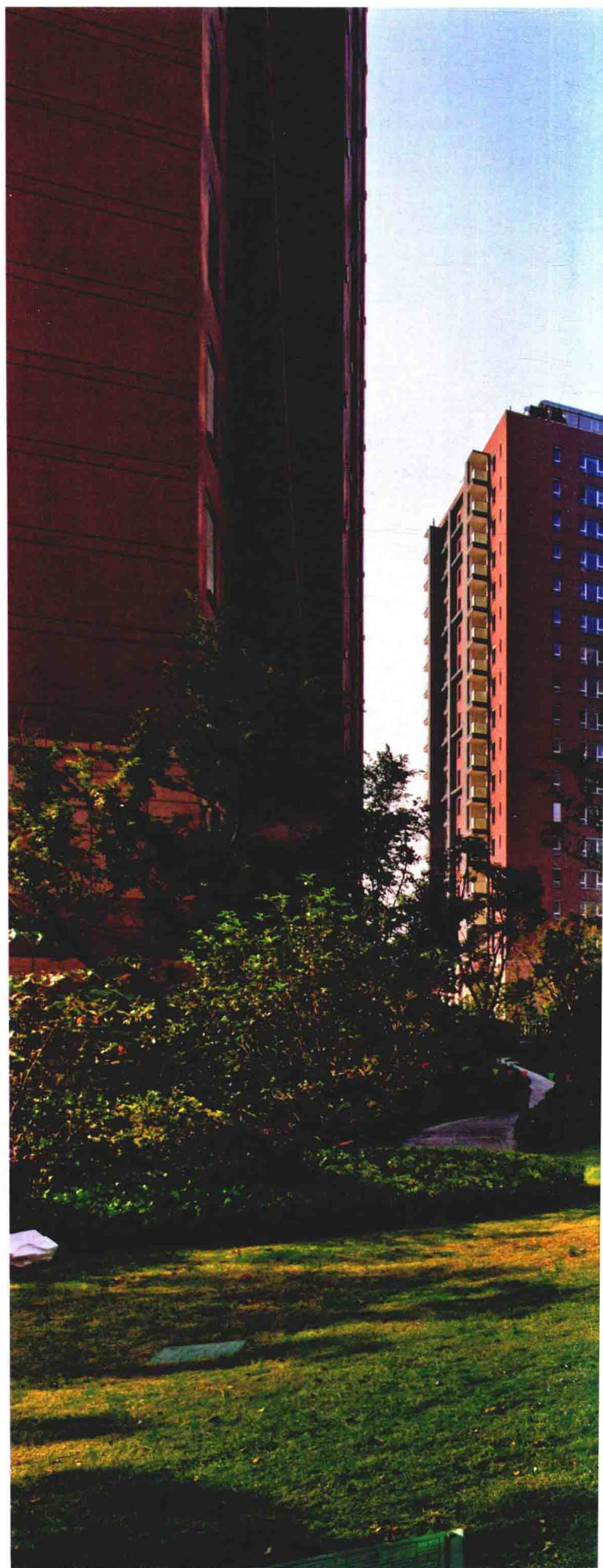
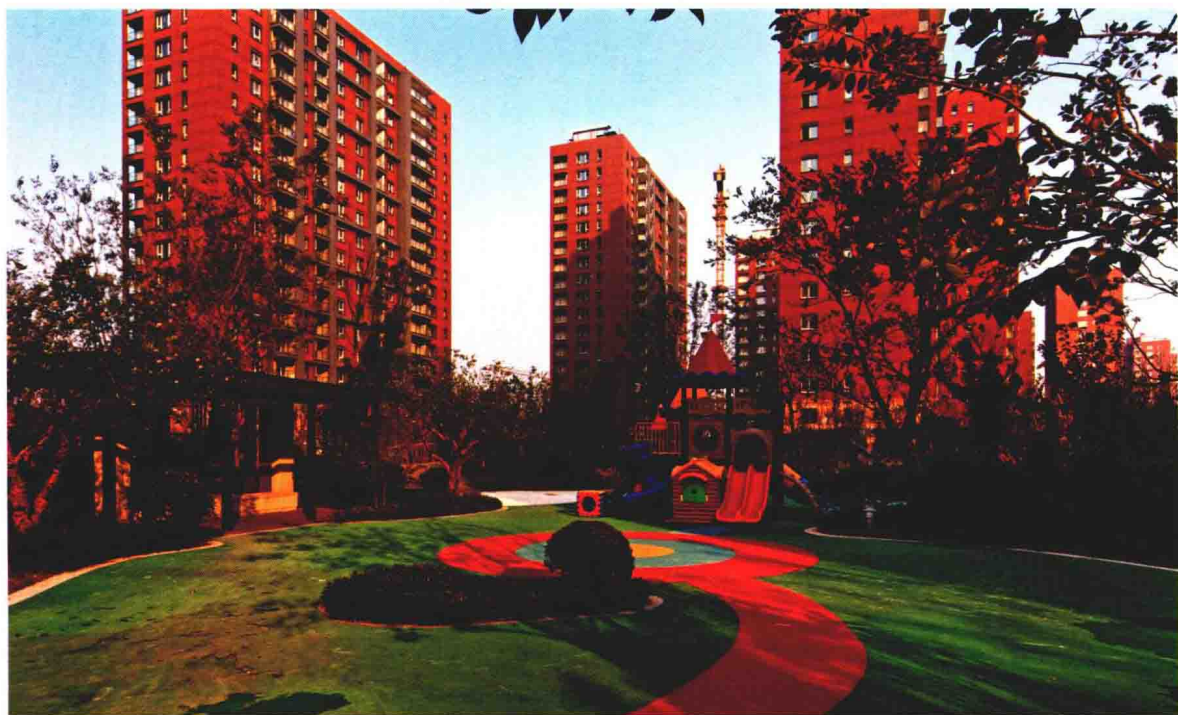
3. 340 m<sup>2</sup> 的滨河景观大道，清晨或黄昏徜徉其中，不仅能呼吸更多清新负离子氧，更能亲水聚财，提升气韵。

4. 11 000 m<sup>2</sup> 的维多利亚中心庭院，别具一格，散发着浓浓的古典欧洲尊贵气质与自然和谐的邻里芬芳。
5. 超过 86 种，2 000 株的草本植物，让人进入绿色的海洋，尽情呼吸花草的芬香。

6. 5 000 m<sup>2</sup> 的兰亭园是人们休闲散步的好去处，曲径通幽，曲水潺潺，镌绘灵韵，晋风荏苒。

7. 面积 5 500 m<sup>2</sup> 的梦幻紫藤苑是甜蜜情侣和温馨夫妇共享二人世界的好去处：长满紫色花瓣的藤蔓一条条垂延而下，交织成一片壮观的紫帘。漫步其下充满恒久浪漫。

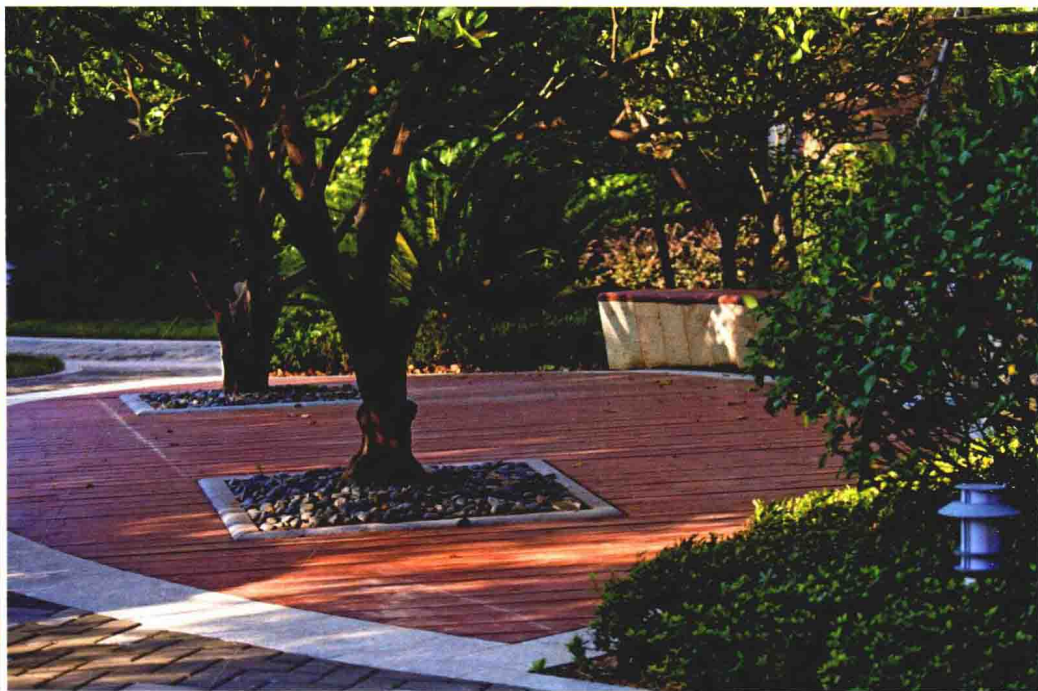
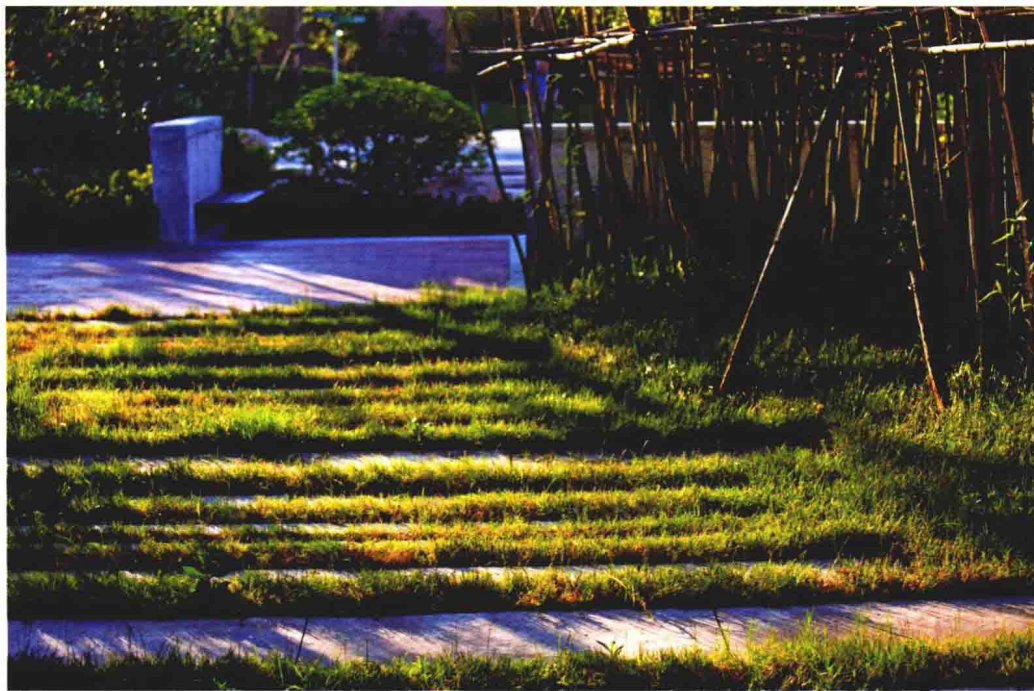




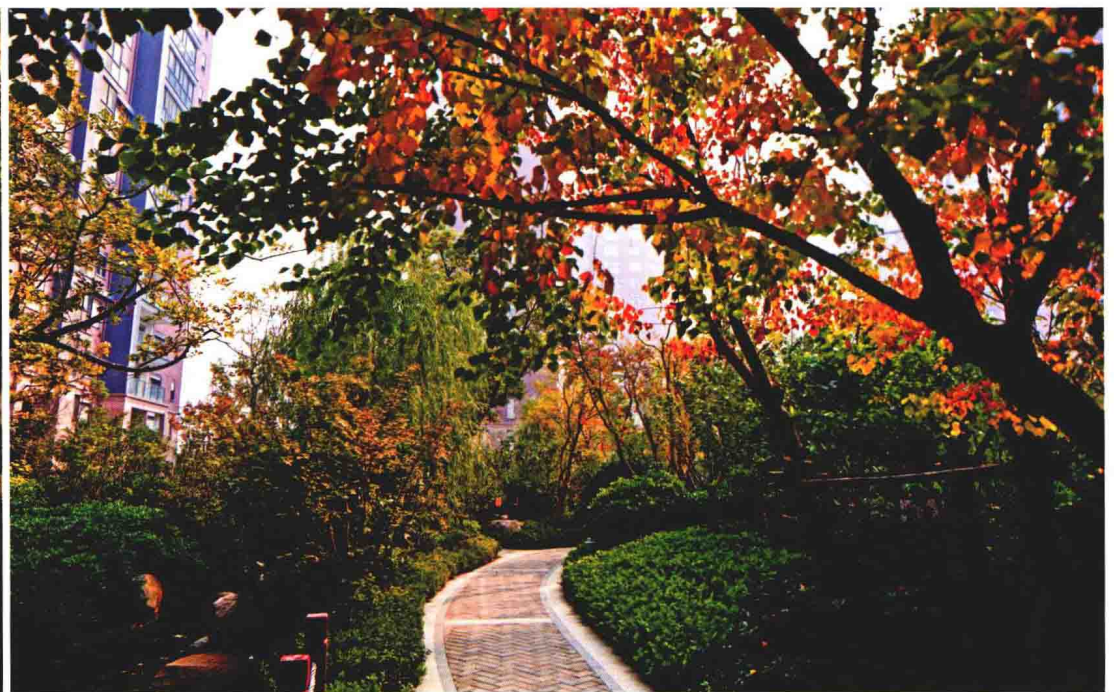
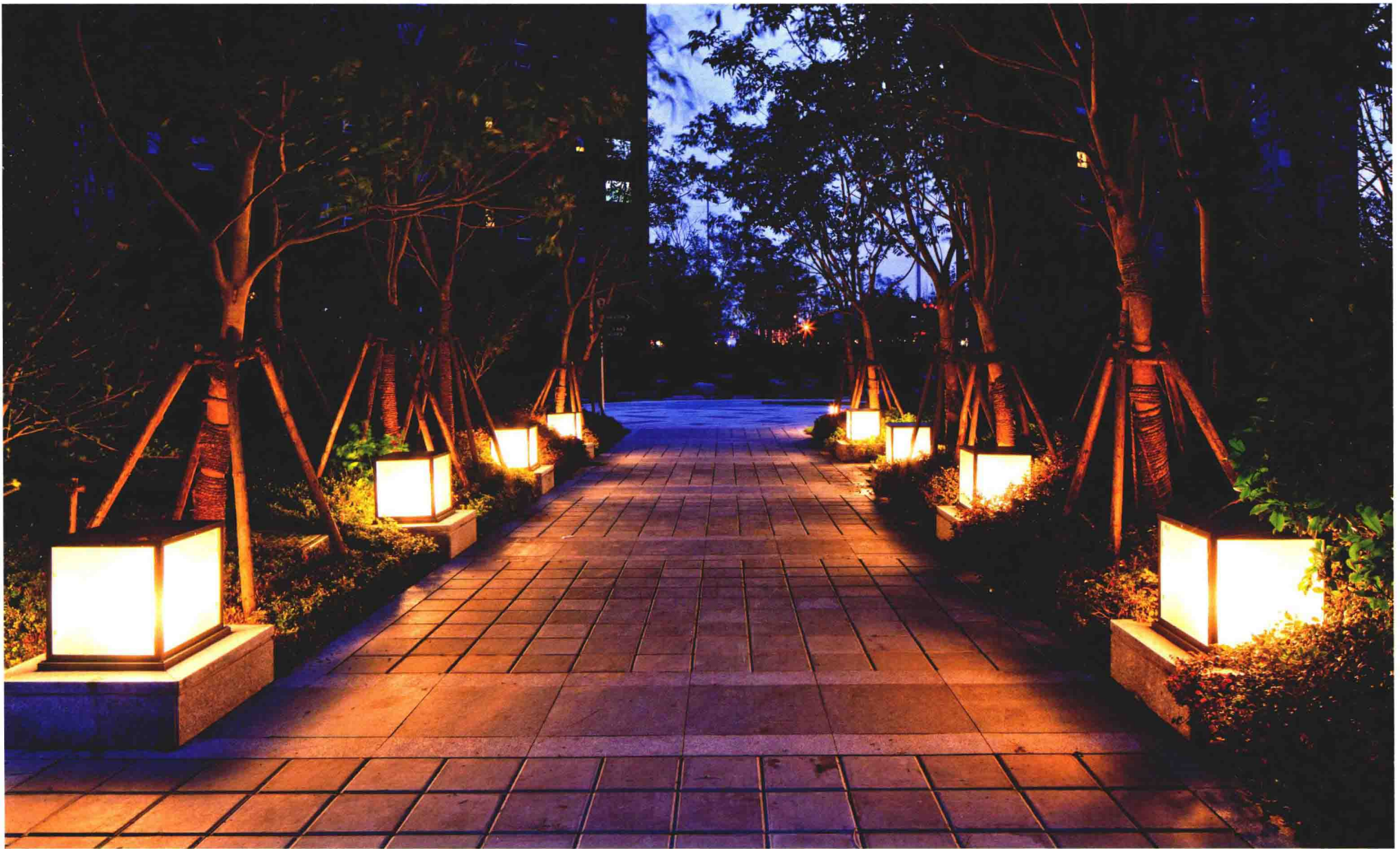














KEYWORDS 关键词

Enclosed Structure  
围合结构

Seaview Scenery  
海景风光

Pleasure and  
Refreshment  
舒适清爽

European Style  
欧式风格

Location: Baoting County, Hainan  
Landscape Design: SED Landscape Architects Co., Ltd.  
Land Area: 36,000 m<sup>2</sup>

项目地点: 海南省保亭县  
景观设计: SED 新西林景观国际  
占地面积: 36 000 m<sup>2</sup>

# Chuangji Nanmei Holiday Phase II, Hainan

## 海南创基南美假日二期

### FEATURES 项目亮点

Blending the concept of "memories" into the project, designers give the development with effect of Spanish legitimate drama, but also attract residents to the carefully designed "Journey of Andalusia".

设计方将“回忆”的构思设想融入设计中，不仅赋予了西班牙舞台戏剧的效果，也让居者对设计师极力营造的“安达卢西亚之旅”有种流连忘返的眷恋之情。

### Overview

Chuangji Nanmei Holiday Phase II is located in Baoting County, Hainan, which is sitting on the north of Sanya City. It is designed to be enclosed by high-rises that setting along the site, to integrate landscape outside and inside the project together to maximize the landscape resources.

### 项目概况

海南创基南美假日二期位于海南省保亭县，南邻三亚市。项目整体建筑在总规划中采用周边式布局，以板式高层住宅沿用地围合的结构形式，让优势外部景观资源与小区内部园景相互渗透、融合，使景观资源得到最大化利用。

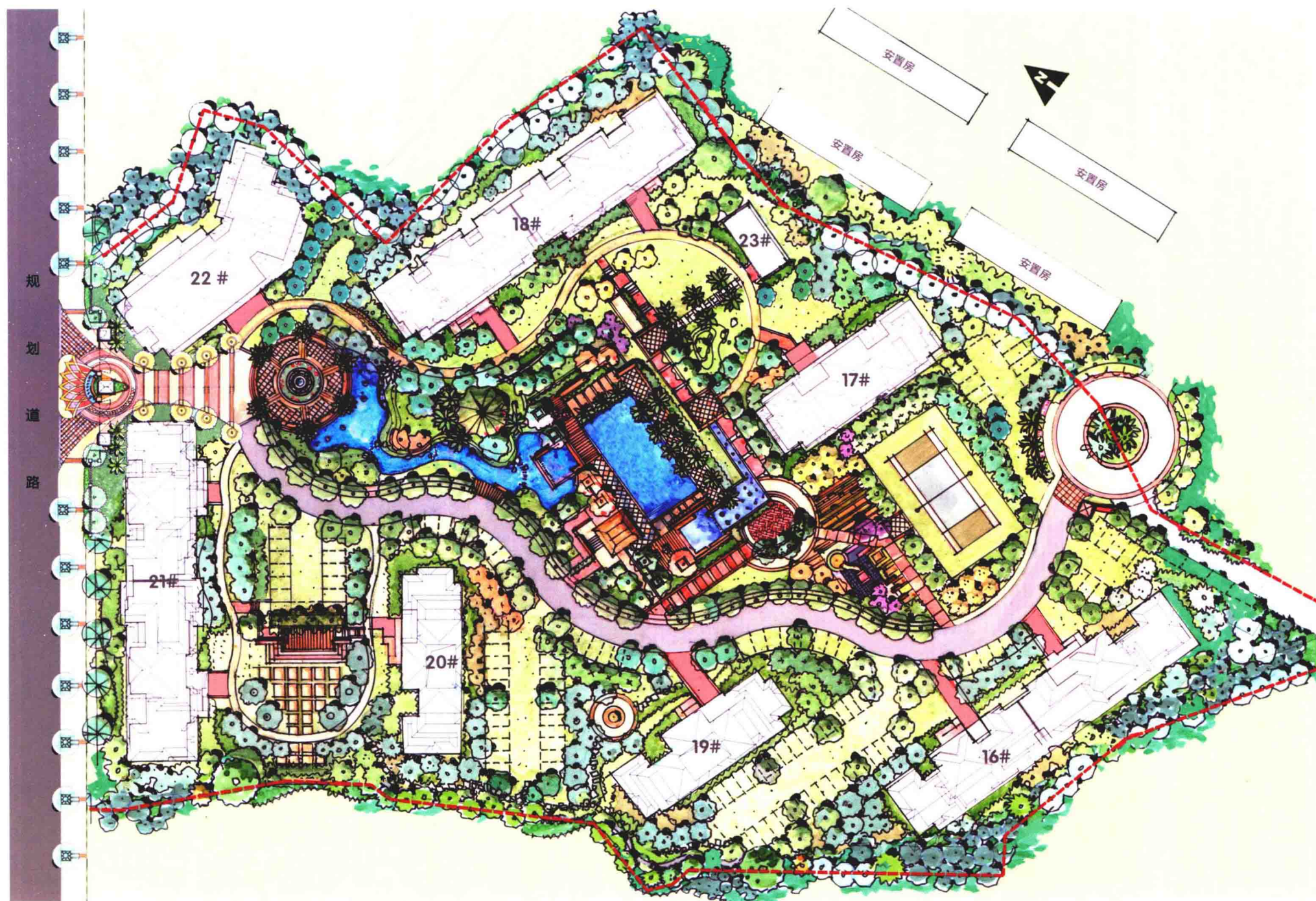
### Design Objective

Blending the concept of "memories" into the project, designers give the development with effect of Spanish legitimate drama, but also attract residents to the carefully designed "Journey of Andalusia".

### 设计目标

设计方将“回忆”的构思设想融入设计中，不仅赋予了西班牙舞台戏剧的效果，也让居者对设计师极力营造的“安达卢西亚之旅”有种流连忘返的眷恋之情。





Site Plan 总平面图

## Landscape Planning

The landscape design is using Andalusia as the designing source and divided into four groups accordingly based on the composition and functions.

### 1. Overture — Plaza de Espana of Barcelona

The overture of landscape represents the passionate and enthusiastic Spanish flavor. Warm-toned pavements, featured sculptures and irregular water features of the plaza are working together to create exotic and romantic atmosphere with sunshine and water around. The carefully selected accessories, as well as bright tones with sharp visual impact lead residents into the lively atmosphere of Barcelona to enjoy the artistic flavor and ready for the trip of Andalusia.

### 2. Main movement — Louisa Park of Costa del Sol, Seville

The main movement of landscape provides large-scale Costa del Sol with silver beach and warm water to offer residents pleasant and refreshment of sunshine coast. Regarded the swimming pool as the core of the landscape group as well as the whole community, landscape designers make full use of terrain height difference to create a cascade to express sense of dynamic and rhyme to the project. Plenty of local plants

are adopted, such as palms, and cooperating with grand infinity swimming pool to build "natural town scenery with seaview".

Louisa Park is the largest park of Seville, which is a romantic garden with stream, cascades, potteries, jasmines and Bougainvillea spectabilis Willd in Moorish style. It is designed as an activity zone for adults and children and eager to make it happy with sophisticated supporting facilities to meet the requirements of functions and cooperating tightly with the design theme. Large-scale lawn and plants have ensured high quality environment for recreation and leisure, besides, exquisite feature plants, accessories and pavements are highlighting the landscape environment which is delicate and dynamic.

### 3. Sub-movement — Ancient city of Cordoba

The sub-movement of landscape is Cordoba, which is an ancient city not far away from Seville and enjoying slow and leisure life.

Divided by the axis road of the project, and compared to other three groups, the landscape group is relatively quiet while designed with leisure spaces of landscape platform and sunken square near the main entrance.