

中国六安



LUAN CHINA

安徽美术出版社

# 中国·六安

LUAN CHINA

中共六安地委 编  
六安地区行政公署

LU'AN PREFECTURAL PARTY COMMITTEE  
LU'AN PREFECTURAL GOVERNMENT



安徽美术出版社



# 图书在版编目(CIP)数据

中国六安/中共六安地委、六安地区行政公署编·—合肥：安徽美术出版社, 1999.9

ISBN 7-5398-0520-X

I. 中… II. 六… III. 社会主义建设—成就—安徽—六安地区—摄影集 IV. D619.542-04

中国版本图书馆CIP数据核字(1999)第61018号

顾 问：朱成林 洪文虎 程世龙 陶芳侯 王启敏 郭化兰  
主 编：汲邦应  
副 主 编：冯纪新 马德俊  
编 委：李振国 郑丹竹 陈存照 张绪鹏 朱明台 汪 平 王第贵  
王永峰 邓明瑞  
策 划：马德俊  
责任编辑：朱秀坤 王景琨  
特约编辑：周仲文 郑进取  
装帧设计：郑进取  
摄 影：田 准 周仲文 郑进取 朱 江 常维伦 解海龙 查若权  
陈维灿 高 波 韩安培 朱 涛 桑小红 郑金强 姚良葆  
杨成明 袁同宇 张立克 陈 力 张 杰 戴 宁 李 实  
李金玉 李 成 张义东 雷家好 张 磊 张建国 周传义  
李 胜 蔡 晓 朱仕林 刘 杰 黄纯阳 郭盛鸿 张传海  
高 丹 余秀炉 许小平 杜全余 王永长 彭继舜 姜厚仁  
陈德华 曹 平 李忠诚 尹宏声 徐 斌 李成林 李传祥  
赵 阳 叶 超 杨世震 傅国刚 鲁振东  
英文翻译：张宇翔 王继玲  
校 译：伊丽莎白·波特(英)  
尼古拉斯·罗斯(英)

中国·六安

中共六安地委编  
六安地区行政公署

安徽美术出版社出版、发行

安徽新华印刷厂印刷

开本：787×1092毫米 1/12 印张：8.5

1999年9月第1版 1999年9月第1次印刷

印数：00001—4000册

ISBN 7-5398-0520-X/J·520

定价：88.00元

# 中国·六安

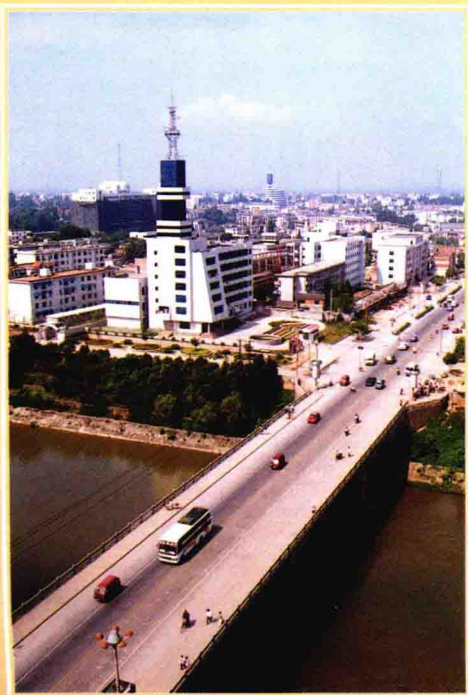
LUAN CHINA

中共六安地委 编  
六安地区行政公署

LU'AN PREFECTURAL PARTY COMMITTEE  
LU'AN PREFECTURAL GOVERNMENT

安徽美术出版社

# 概 述



## 目 录

- 一、投资环境 日臻完善
- 二、工业经济 初具规模
- 三、市场农业 繁荣兴旺
- 四、资源丰富 蓄势待发
- 五、旅游胜地 风光绚丽
- 六、科教文卫 比翼齐飞
- 七、对外交流 方兴未艾

位于中国安徽省西部的六安地区，素称“皖西”。现辖六安市、舒城县、霍山县、金寨县、霍邱县、寿县、六安经济技术开发区和叶集改革发展试验区，有188个乡镇，3402个行政村，面积17976平方公里，人口656万。沐浴20年改革开放的春风，踏过50年建设发展的历程，六安正以蓬勃生机和活力大步走向新世纪。

六安的定名已有2000多年的历史。汉武帝元狩二年(公元前121年)，取“六地平安”之意，置六安国，六安之名由此而始。六安历史悠久，是中华民族古代文化发源地之一。在新石器时代就有人类活动。坐落在六安市东郊的皋陶墓，记载着4000多年前皋陶与大禹共辅帝舜的历史。楚国丞相孙叔敖主持建造的安丰塘(芍陂)，被誉为“神州第一塘”。辅助孙权三分天下的东吴名将周瑜，就是从这里开始他火烧赤壁的辉煌历程。

秀美富饶之地使六安以“金六安”美丽的传说而著称。境内近千万亩耕地春华秋实，是安徽粮油及大宗经济作物主产区。水资源丰裕且优良。绵延境内的大别山山系使六安成为安徽最大的林业基地之一。六安矿物品种已探明的有铁、金、银、铅锌、石灰岩、大理石、石油等25种，仅霍邱铁矿就蕴藏着近20亿吨铁矿石，占安徽省铁矿储量三分之一以上，为华东第一大矿。

六安自古就是进出中原的门户，连接鄂豫皖三省的要冲。现在更是纵横于京九陇海之间，驰骋于华东中原之上，陆水交通十分方便。邮政、电信达到国内先进水平。

优越的地理位置，丰富的物质资源和便利的交通，为六安经济发展打下了良好的基础。建国50年来，工业初具规模，形成食品、纺织等35个地方工业体系。农村经济全面发展，是全国商品粮生产基地之一。农业结构调整实现新突破，贸工农一体化，产供销一条龙的产业格局已初步形成。第三产业逐步繁荣。旅游开发方兴未艾。房地产开发势头强劲。金融保险业稳步发展。信息咨询业展露头角。一批辐射力强、影响面大的专业市场相继形成。社会事业全面进步。精神文明建设成效显著。外向型经济迅速发展。

当前，加快发展已成为时代的最强音，六安已成为中国东西部经济隆起带中承接辐射最为有利的地区之一。在20世纪曾经创造辉煌历程的六安人，将用自己的双手和聪明才智，充分利用扼据东西部两个反向梯度开发要冲的优越地理位置和已经形成的经济基础，在长江淮河两大经济格局中壮大实力，在新世纪征途中勇往直前，再创辉煌。



# BRIEF INTRODUCTION

Lu'an Prefecture, situated in the Western part of Anhui, is commonly called Wanxi West Anhui. Currently, it has under its jurisdiction Lu'an City, Shucheng County, Huoshan County, Jingzhai County, Huoqiu County, Shouxian County, Lu'an Economic and Technology Development Zone and the Yeji Reform and Development Experimental Zone. It covers an area of 17,976 km<sup>2</sup> with 188 towns and townships which consist of 3,402 administrative villages. The population totals 6.56 million. For 20 years, a reform and opening policy has been stimulating and strengthening Lu'an, a city with a history of 50 years of construction and development. Now it is marching firmly and vigorously into a new century.

The naming of Lu'an has a history of over 2000 years. In the second year of the reign of Yuanshou, Wu Emperor of the Han Dynasty circa 121 B.C, the name Lu'an, which carries the meaning of peace in all the land, came into being with the establishment of Lu'an State. The ancient city is one of the cradles of ancient Chinese culture. Early in the New Stone Age, there were humans living here. The Gaoyao Tomb which stands in the eastern outskirts of Lu'an records the story of Gaoyao and Dayu assisting Emperor Shun in governing the county more than 4000 years ago. Anfeng Tang Pond, also called Shaobei, was constructed under the supervision of Sun Shuao, the prime minister of Shu State. It is honoured as the First Pond of the World. General Zhou Yu of the East Wu Kingdom, who assisted Sun Quan, the monarch, in obtaining the power of ruling a

third of China, planned, right here in Lu'an, the famous War of Firing Chibi. The magnificence and fertility of Lu'an gained itself a name of Golden Lu'an. Having close to 10 million mu of cultivated land in its borders, it is the main production area of food, oil and most economic crops of Anhui Province. It also has rich and excellent water resources. Dabieshan mountains make Lu'an also one of the largest forestry industry bases of Anhui. Lu'an is also rich in minerals. Up to the present time, 25 minerals have been discovered, such as iron, gold, silver, lead, zinc, limestone, marble, petroleum to name but a few. Located in Huoqiu Iron Mine are the deposits of 2 billion tons of iron ore, which takes up more than a third of the total iron ore deposits of Anhui. It is the largest iron mine in East China.

Early in ancient time, Lu'an became an important thoroughfare for entering and leaving Central China, connecting the communications hub of Hubei, Henan and Anhui provinces. Currently, it has become even more important with its location in the cross junction between Jingjiu and Longhai railway lines and it has convenient land and water transportation. The post and telecommunications services have also reached fruition.

An excellent geographic location, rich resources and convenient transportation lay a good foundation for the economic development of Lu'an. For 50 years after the founding of PR China, industries including the food and textile industry have grown with 35 local industries being

formed. The country's economy has been fully developed and it is one of the national commercial grain production bases. The adjustment of the agricultural structure has just begun to emerge. The new industrial pattern has taken on its shape with a unification of trade, industry and agriculture and a line of production, provision and sales. The tertiary industries have been gradually enriched. The development of tourism has also just begun. The newly developed real estate takes on a vigorous and powerful form. The financial and insurance industries have been steadily developing. The information service is just showing initial signs of progress. Some special markets with strong influences have also been successively established. Great progress has been made in social areas and great strides have been made in the field of ethical and moral development. Export-oriented economics has also been rapidly developing.

At present, speeding up development has already become the watchword of the province. Lu'an is one of the most advantageous districts to have an influence in the economic development of west-eastern China. The hard-working and intelligent Lu'an people, who have made great achievements in the 20th Century, will take full advantage of its excellent geographic location and its gained economic foundations to strengthen its power in the two great economic regions of the Changjiang and Huaihe Rivers and to ensure greater achievements in the new century.





## 一、投资环境 日臻完善

六安地区城市基础设施步伐加快，小城镇建设再上台阶，城镇供水、供电、供气、通讯、道路、绿化、环境卫生、商业网点等逐步完善。





全区政治、经济、文化中心所在地六安

Lu'an, the centre of politics, economics and culture of the whole

## I A Gradually Perfected Investment Environment

The pace of the city's infrastructure construction in Lu'an Prefecture is now being accelerated. Construction of small towns has begun to emerge. In the cities and towns' aspects such as the supply of water, electricity and gas, telecommunications, roads, forestation, environmental health and commercial networks, have all been gradually perfected.





- ① The civilized and advanced city of Shucheng.
- ② The clean and tidy Huoqiu County-Centre.
- ③ The beautiful mountainous city of Huoshan.
- ④ The new view of the ancient city - Shouxian County.
- ⑤ The centre of Jinzhai County surrounded by mountains and water.





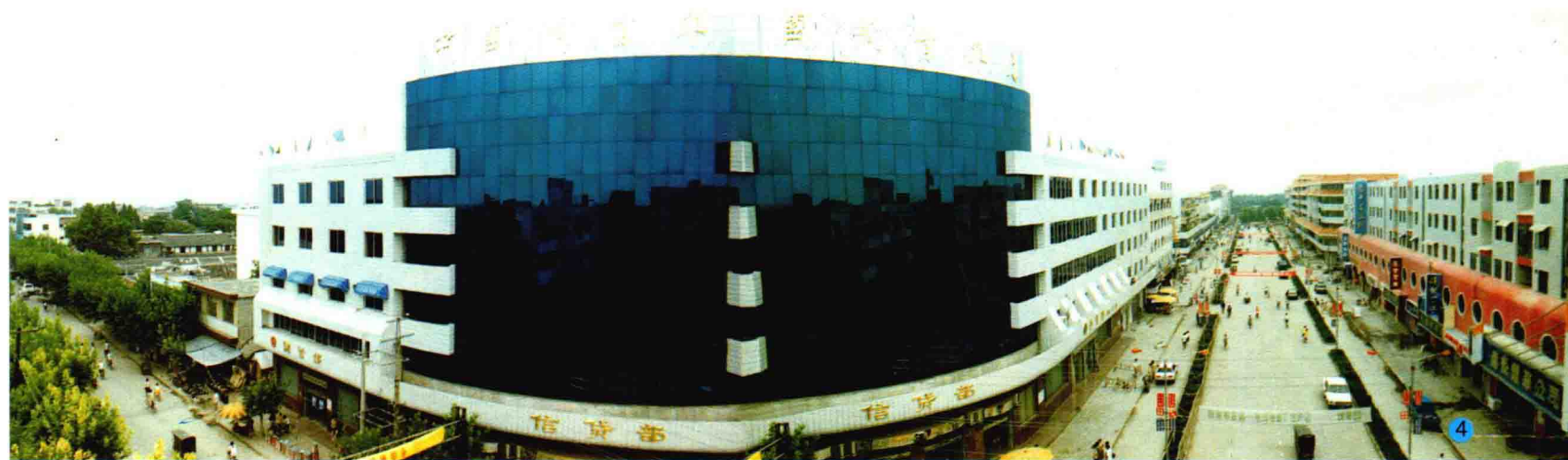
① 文明创建先进城市舒城

② 整洁的霍邱县城

③ 美丽的山城霍山

④ 寿县古城新姿

⑤ 依山傍水的金寨县城





康居工程  
Residential Project

舒城凤池苑小区  
Fengchiyuan Block, Shuchen County.



六安市淠苑小区  
Piyuan Block, Lu'an City.

六安市振华新村  
Zhenhua New Village, Lu'an City.



六安市东苑小区  
Dongyuan Block, Lu'an City.



## 叶集改革发展试验区

省级和国家级综合改革试点镇、全国小城镇建设试点镇。全省唯一一个行使县级综合权限的改革发展试验区。

### Yeji Reform and Development Experimental Zone

In January 1999 Yeji Town, the provincial-level and state-level reformed experimental town, became the only reformed and developed experimental zone in the whole province that was able to exercise county-level comprehensive power.



叶集之夜 Yeji by night



叶集改革发展试验区挂牌  
Yeji Reform and Development Experimental Zone at its formal founding ceremony.



省委书记回良玉、六安地委书记朱成林、六安行署专员洪文虎视察叶集市场  
The Secretary of Anhui Party Committee, Hui Liangyu, Lu'an Prefectural Party Secretary Zhu Chenglin and Head of Lu'an Prefectural Government Hong Wenhu inspecting the market in Yiji.



## 六安经济技术开发区

经省政府批准建设的六安经济技术开发区，已引来恒大集团等30多家中外企业入区办厂，累计投资额3.1亿元，项目达47个，目前已开发2平方公里，成为六安地区经济发展新的增长点。



开发区一角 A corner of the zone

## Lu'an Economic and Technological Development Zone

Ratified by Anhui Provincial Government, the Lu'an Economic and Technological Development Zone, has attracted more than 40 domestic and foreign enterprises, including Hengda Group, to come and invest in the zone. The total amount invested amounts approximately to RMB 310 million. Currently, 2 km<sup>2</sup> has been developed. It has become the new growth point in the economic development of Lu'an Prefecture.



位于开发区的全国科技示范企业恒大集团 The national science and technology example enterprise, Hengda Group.



## 小城镇建设

全区城镇区面积增加到164平方公里，常住人口达到183万人，农村城镇化水平达到28%。

### Small-Town Construction

The whole town's area in the entire prefecture has increased to 164 km<sup>2</sup>. The number of the residents totals 1.83 million. 28% of the countryside area has been urbanised.



全省小城镇建设示范镇舒城杭埠镇广场  
Hangbu Town Square, an example of a national small-town .



全国小城镇建设示范镇霍邱姚李镇  
Yaoli Town, an example of a national small-town construction, Huoqiu City.



全国小城镇建设示范镇六安市苏埠镇  
Subu Town, an example of a national small-town construction, Lu'an city.



## 供水、供气

设备新颖的六安市水厂，总投资达4529万元，日供水能力达14万吨，达到90年代中期国内同类水厂技术水平。

## The Supply of Water and Gas

Lu'an Waterworks now has brand new irrigation equipment. The amount invested in this venture totals RMB 45,290,000. The daily water supply capacity is 140,000 tons. And it has reached the same technological level of that of the national waterworks of the mid 1990's.



净水池 A water purification pool.



六安市煤气公司二万立方米煤气柜 A 20,000m<sup>3</sup> gas tank of Lu'an Gas Company.



水质化验 Checking water quality.



六安市国桢燃气公司的供气站  
A gas supply station of Lu'an Guozhen Gas Company.



## 环境保护

良好的生态环境有力地促进了环境、资源向商品的全面、快速转化。

## Environmental Protection

The favourable biological environment has effectively promoted a quick transformation from environmental theories into real action.



污染治理 Pollution management.



环境监测 Environment monitoring.

水质监测 Water quality monitoring.



## 供电、发电

全区水能开发已装机17.4万千瓦。佛子岭等大型水电站总装机12.7万千瓦；小型水电站装机4.6万千瓦，全区已实现村村通电。



地区供电局大楼 The Prefectural Electricity Supply Bureau .



## Supply and Generation of Electricity

The whole prefecture has a water energy capacity of 174,000 kw. The total capacity of the 4 big reservoirs, one of which is Foziling, amounts to 127,000 kw. The small hydroelectric stations have a capacity of 46,000 kw. Now all the villages in the whole prefecture have electricity.

位于六安城区的220KV变电所  
A 220 kv Electricity Transformer Substation  
in Lu'an City.



地区供电局总调度室 The general Control Room of the Prefectural Electricity Supply Bureau