

赠200分钟
超值MP3

LONGMAN PREPARATION
SERIES FOR THE NEW
TOEIC TEST
More Practice Tests

新托业官方 考试全真模拟

Lin Loughheed / 编著

TOEIC



科学出版社

www.sciencep.com

LONGMAN PREPARATION
SERIES FOR THE NEW TOEIC TEST
More Practice Tests

新托业官方考试全真模拟

LONGMAN PREPARATION SERIES FOR THE
NEW TOEIC TEST: More Practice Tests

Lin Lougheed 编著

江苏工业学院图书馆
藏书章

科学出版社

北京

图字：01-2007-4604 号

Original edition, entitled LONGMAN PREPARATION SERIES FOR THE NEW TOEIC® TEST: MORE PRACTICE TESTS (WITH ANSWER KEY AND AUDIOSCRIPT), 4th Edition, 0131993062 by LOUGHEED, published by Pearson Education, Inc. publishing as Pearson Education ESL, Copyright © 2006 by Pearson Education, Inc.

All rights reserved. No part of this book may be reproduced or transmitted in any form or by any means, electronic or mechanical, including photocopying, recording or by any information storage retrieval system, without permission from Pearson Education, Inc.

China edition published by PEARSON EDUCATION ASIA Ltd., and SCIENCE PRESS Copyright © 2008.

This edition is manufactured in the People's Republic of China, and is authorized for sale and distribution in the People's Republic of China exclusively (except Taiwan Province, Hong Kong SAR and Macau SAR).

本书封面贴有 Pearson Education (培生教育出版集团) 激光防伪标签。无标签者不得销售。

图书在版编目(CIP)数据

新托业官方考试全真模拟 = LONGMAN Preparation Series for the NEW TOEIC Test: More Practice Tests. / (美) 拉菲德 (Lougheed, L.) 编著.
—北京: 科学出版社, 2008

ISBN 978-7-03-020273-4

I. 新… II. 拉… III. 英语 - 水平考试 - 习题 IV. H319.6

中国版本图书馆 CIP 数据核字(2007)第 148938 号

责任编辑: 郝建华 朱琳 张迪
责任印制: 钱玉芬 / 封面设计: 无极书装

科学出版社出版

北京东黄城根北街 16 号

邮政编码: 100717

<http://www.sciencep.com>

新蕾印刷厂印刷

科学出版社发行 各地新华书店经销

*

2008 年 1 月第 一 版 开本: 890 × 1240 1/16

2008 年 1 月第一次印刷 印张: 17

印数: 1—6 000 字数: 576 000

定价: 38.00 元 (含 1 张光盘)

(如有印装质量问题, 我社负责调换〈环伟〉)

PHOTO CREDITS

Australian Embassy, Washington, D.C.

page 9 (bottom); page 10 (both); page 41 (bottom); page 45 (bottom); page 46 (both);
page 49 (bottom); page 77 (bottom); page 81 (top); page 82 (bottom); page 85 (both)

CORBIS

page 4 (top) © Roger Wood; page 7 (top) © Yang Liu; page 9 (top) © Dave G. Houser;
page 43 (bottom) © Jack Hollingsworth; page 76 (bottom) © Reuters NewMedia Inc;
page 80 (bottom) © Reuters NewMedia Inc; page 113 (bottom) © James Leynse

Educational Institute of AH&MA, East Lansing, Michigan

page 12 (top); page 48 (top); page 119 (top)

Educational Testing Service, Princeton, New Jersey

pages 3, 39, 75, 111

Fotosearch

page 4 (bottom); page 7 (bottom) Image Source; page 115 (bottom) CORBIS RF

Getty

page 6 (bottom) © Digital Vision; page 82 (top) © Ron Chapple

Instructional Design International, Inc., Washington, D.C.

page 5 (both); page 6 (top); page 8 (bottom); page 11 (both); page 12 (bottom); page
13 (top); page 40 (bottom); page 42 (top); page 44 (top); page 45 (top); page 47 (both);
page 48 (bottom); page 49 (top); page 76 (top); page 77 (top); page 78 (both); page 79
(both); page 80 (top); page 81 (bottom); page 83 (bottom); page 84 (bottom); page 112
(bottom); page 114 (top); page 117 (both); page 118 (top); page 120 (both); page 121
(bottom)

Japan Airlines, New York, New York

page 8 (top); page 114 (bottom)

Korean Information Center, Embassy of the Republic of Korea, Washington, D.C.

page 115 (top)

NASA, Washington, D.C.

page 84 (top); page 112 (top); page 118 (bottom); page 119 (bottom)

PhotoEdit

page 116 (bottom) © Jeff Greenberg

PictureQuest

page 13 (bottom) © Benelux Press; page 40 (top); page 41 (top); page 43 (top); page
44 (bottom) © Ron Chapple; page 83 (top) © Bob Llewellyn; page 113 (top) © Esbin-
Anderson Photography; page 116 (top) © SuperStock

Schiffgens, Lisa

page 42 (bottom); page 121 (top)

INTRODUCTION

GENERAL TEST-TAKING DIRECTIONS

Longman Preparation Series for the New TOEIC® Test: More Practice Tests will give you the practice you need to do well on the new TOEIC test. When you take the tests in this book, you should pretend that you are actually taking the TOEIC test. Make sure that you have enough time to complete each section of the test. It is not necessary to take the whole test all at once if you do not have enough time. However, you should not spend more time than is allowed for each part.

You will need a soft lead pencil and a copy of one of the answer sheets from the back of the book. All answers for the TOEIC test will be marked on a similar sheet. Do not write in your book. This will allow you to take the test more than once. When you mark your answer sheet, completely fill the oval. Do not make any marks outside of the oval. If you do not know the answer to a question, **guess**. You may guess correctly!

The answers for the Practice Tests are in the back of the book. Each answer has a short explanation. These explanations refer you to study materials found in other books in the *Longman Preparation Series for the New TOEIC® Test*. These books, titled *Introductory Course*, *Intermediate Course*, and *Advanced Course*, are available at your bookstore or from your local Longman representative.

You will find a Conversion Table and Chart on pages 261–262. The table and chart will give you an approximation of what your TOEIC test scores might be. Please note that this is an approximation, not an actual TOEIC test score.

Listening Comprehension



Notice the headphone symbol used throughout the book. This symbol means you will need a CD player and the CD for the Listening Comprehension sections. If you do not have the CD, you may have someone read you the questions from the audioscript. The audioscript is in the back of this book.

There are four parts to the Listening Comprehension section.

	NUMBER OF QUESTIONS	TIME
Part 1: Photos	10	45 minutes
Part 2: Question-Response	30	
Part 3: Conversations	30	
Part 4: Talks	30	
TOTAL	100	

Reading

You will only need the test book, an answer sheet, and a pencil to do the Reading section. There are three parts to the Reading section of the test.

		NUMBER OF QUESTIONS	TIME
Part 5:	Incomplete Sentences	40	1 hour and 15 minutes
Part 6:	Text Completion	12	
Part 7:	Reading Comprehension		
	• Single Passages	28	
	• Double Passages	20	
	TOTAL	100	

NEW TOEIC® TEST DIRECTIONS

GENERAL DIRECTIONS: The following general directions are provided by the Educational Testing Service (ETS®) and are reprinted here with permission. Read them and be sure you understand them.



Test of English for International Communication

General Directions

This test is designed to measure your English language ability. The test is divided into two sections: Listening and Reading.

You must mark all of your answers on the separate answer sheet. For each question, you should select the best answer from the answer choices given. Then, on your answer sheet, you should find the number of the question and fill in the space that corresponds to the letter of the answer that you have selected. If you decide to change an answer, completely erase your old answer and then mark your new answer.

CONTENTS 目录

INTRODUCTION 介绍

General Test-Taking Directions 考试说明概述	vi
New TOEIC® Test Directions 新托业考试说明	viii

PRACTICE TESTS 全真模拟题

Practice Test One 模拟题一	3
Practice Test Two 模拟题二	45
Practice Test Three 模拟题三	87
Practice Test Four 模拟题四	129

AUDIOSCRIPTS 听力原文

Practice Test One 模拟题一	171
Practice Test Two 模拟题二	178
Practice Test Three 模拟题三	185
Practice Test Four 模拟题四	192

ANSWER KEYS 答案

Practice Test One 模拟题一	201
Practice Test Two 模拟题二	214
Practice Test Three 模拟题三	227
Practice Test Four 模拟题四	239

ANSWER SHEETS 答题卡

Practice Test One 模拟题一	255
Practice Test Two 模拟题二	257
Practice Test Three 模拟题三	259
Practice Test Four 模拟题四	261
Practice Test Score Conversion 模拟题成绩转换表	263

PRACTICE TESTS

PRACTICE TEST ONE

You will find the Answer Sheet for Practice Test One on page 255. Detach it from the book and use it to record your answers. Play the audio for Practice Test One when you are ready to begin.

LISTENING TEST

In the Listening test, you will be asked to demonstrate how well you understand spoken English. The entire Listening test will last approximately 45 minutes. There are four parts, and directions are given for each part. You must mark your answers on the separate answer sheet. Do not write your answers in the test book.

PART 1

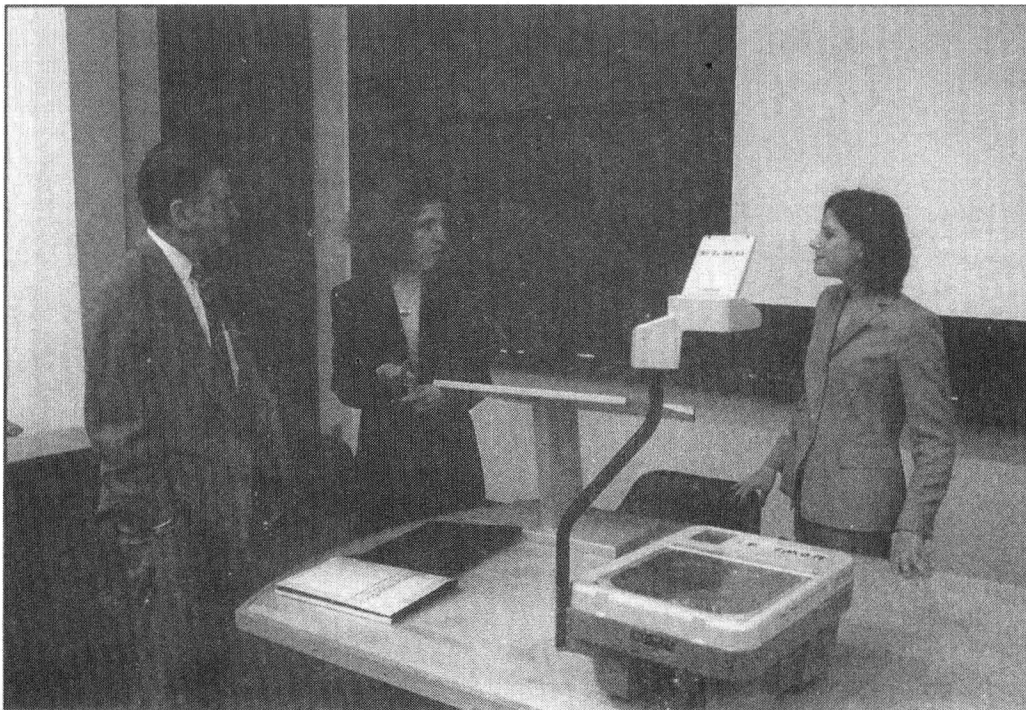


Directions: For each question in this part, you will hear four statements about a picture in your test book. When you hear the statements, you must select the one statement that best describes what you see in the picture. Then find the number of the question on your answer sheet and mark your answer. The statements will not be printed in your test book and will be spoken only one time.

Example

Sample Answer

(A) (B) (C) (D)



Statement (C), "They're standing near the table," is the best description of the picture, so you should select answer (C) and mark it on your answer sheet.

1.



2.



3.

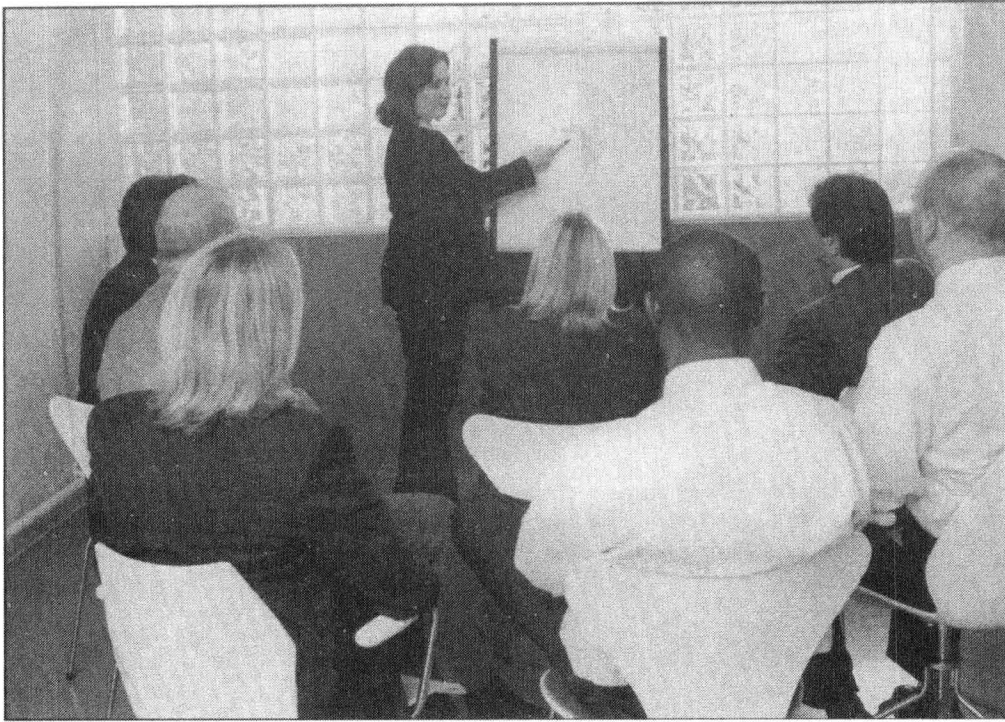


4.

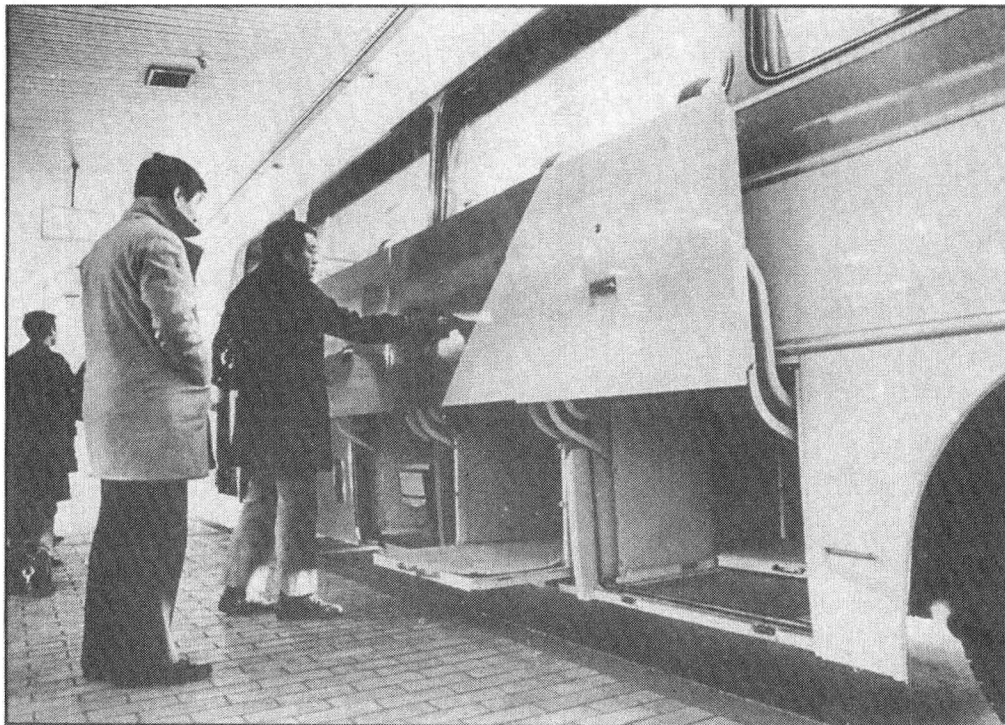


GO ON TO THE NEXT PAGE 

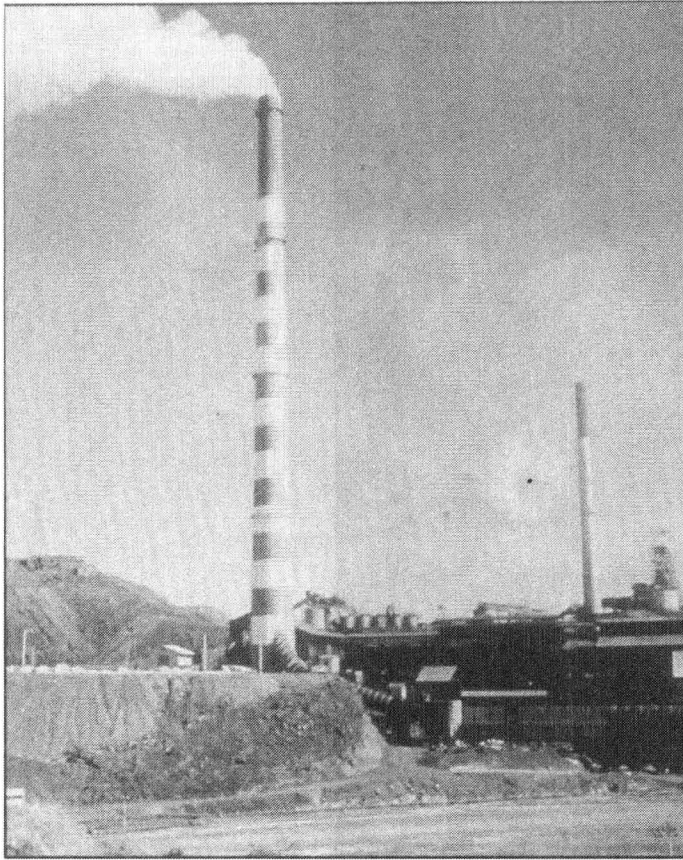
5.



6.



7.

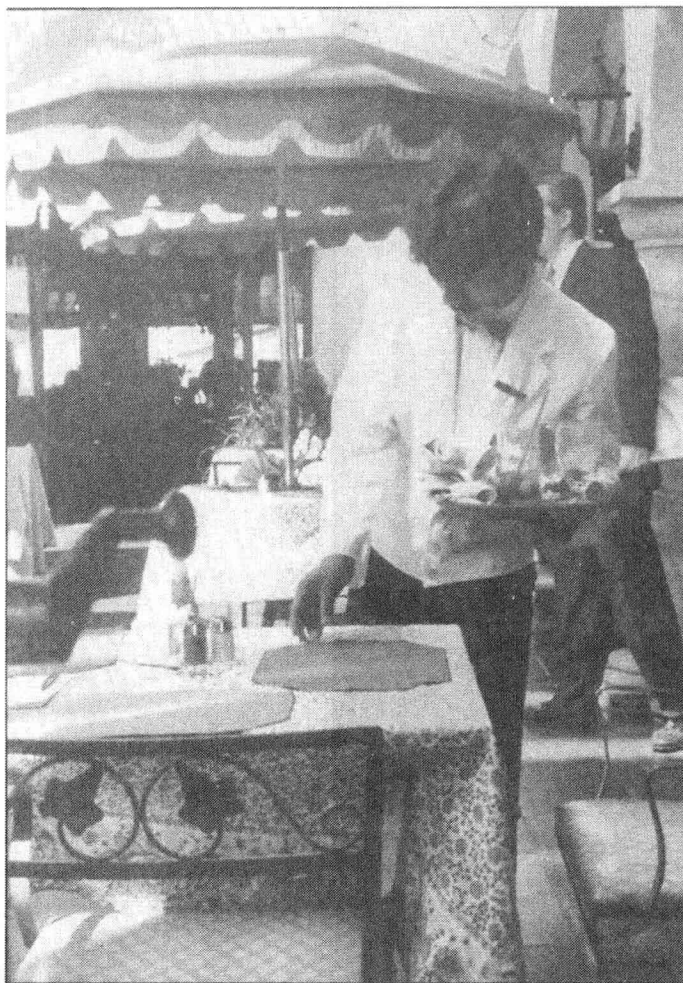


8.



GO ON TO THE NEXT PAGE

9.



10.

