

The Smartest Way To Get Certified™



Exam 70-240

WINDOWS® 2000 Accelerated

**Microsoft
Certified
Systems
Engineer™**

**All Unique
Questions
Not found in any
other Exam Cram
product**

**Lance Cockcroft, Erik
Eckel, Ron Kauffman**



中国水利水电出版社
www.waterpub.com.cn



MCSE™ Windows 2000 Accelerated

江苏工业学院图书馆
藏书章

Lance Cockcroft

Erik Eckel

Ron Kauffman

中国水利水电出版社

Reprint Copyright

Original English language edition published by The Coriolis Group LLC, 14455N. Hayden Drive, Suite 220, Scottsdale, Arizona 85260 USA, telephone (602)483-0192, fax (602) 483-0193. Copyright © 2000 by The Coriolis Group. English language reprinted copyright © 2001 by China WaterPower Press. All rights reserved.

Original Copyright

©2000 The Coriolis Group. All Rights Reserved.

This book may not be duplicated in any way without the express written consent of the publisher, except in the form of brief excerpts or quotations for the purposes of review. The information contained herein is for the personal use of the reader and may not be incorporated in any commercial programs, other books, databases, or any kind of software without written consent of the publisher. Making copies of this book or any portion for any purpose other than your own is a violation of United States copyright laws.

Limits Of Liability And Disclaimer Of Warranty

The author and publisher of this book have used their best efforts in preparing the book and the programs contained in it. These efforts include the development, research, and testing of the theories and programs to determine their effectiveness. The author and publisher make no warranty of any kind, expressed or implied, with regard to these programs or the documentation contained in this book.

The author and publisher shall not be liable in the event of incidental or consequential damages in connection with, or arising out of, the furnishing, performance, or use of the programs, associated instructions, and/or claims of productivity gains.

Trademarks

Trademarked names appear throughout this book. Rather than list the names and entities that own the trademarks or insert a trademark symbol with each mention of the trademarked name, the publisher states that it is using the names for editorial purposes only and to the benefit of the trademark owner, with no intention of infringing upon that trademark.

书 名	MCSE Windows® 2000 Accelerated 考前辅导
作 者	[美] Lance Cockcroft, Erik Eckel, Ron Kauffman
出版、发行	中国水利水电出版社 (北京市三里河路6号 100044) 网址: www.waterpub.com.cn E-mail: sale@waterpub.com.cn 电话: (010) 63202266 (总机)、68331835 (发行部)
销 售	全国各地新华书店
排 版	北京万水电子信息有限公司
印 刷	北京蓝空印刷厂
规 格	787×1092毫米 16开本 55.75印张 1287千字
版 次	2001年1月第一版 2001年1月北京第一次印刷
印 数	0001—2000册
定 价	88.00元 (1CD, 含配套书)

凡购买我社图书, 如有缺页、倒页、脱页的, 本社发行部负责调换

版权所有·侵权必究

Windows 2000 MCSE 考试简介

考试课程

随着 Windows 2000 的推出, 微软公司也推出了有关 Windows 2000 的认证考试。根据参加考试人员不同情况, 其有关考试科目并不相同, 有关考试科目如下。

Windows 2000 MCSE 考试科目

核心考试	
如果没有通过以下任何一种 Windows NT 考试	
Exam 70-067	Implementing and Supporting Microsoft Windows NT Server 4.0
Exam 70-068	Implementing and Supporting Microsoft Windows NT Server 4.0 in the Enterprise
Exam 70-073	Microsoft Windows NT Workstation 4.0
则必须参加以下四种考试	
Exam 70-210	Installing, Configuring and Administering Microsoft Windows 2000 Professional
Exam 70-215	Installing, Configuring and Administering Microsoft Windows 2000 Server
Exam 70-216	Implementing and Administering Microsoft Windows 2000 Network Infrastructure
Exam 70-217	Implementing and Administering Microsoft Windows 2000 Directory Services Infrastructure
如果已经通过考试 70-067、70-068 或 70-073, 则可以参加下面的加速考试	
Exam 70-240	Microsoft Windows 2000 Accelerated Exam for MCPs Certified on Microsoft Windows NT 4.0
可选核心考试	
从下面考试中选择一种	
Exam 70-219*	Designing a Microsoft Windows 2000 Directory Services Infrastructure
Exam 70-220*	Designing Security for a Microsoft Windows 2000 Network
Exam 70-221*	Designing a Microsoft Windows 2000 Network Infrastructure
选修考试	
从下面考试中选择两种	
Exam 70-019	Designing and Implementing Data Warehouse with Microsoft SQL Server 7.0
Exam 70-219*	Designing a Microsoft Windows 2000 Directory Services Infrastructure
Exam 70-220*	Designing Security for a Microsoft Windows 2000 Network
Exam 70-221*	Designing a Microsoft Windows 2000 Network Infrastructure
Exam 70-222	Migrating from Microsoft Windows NT 4.0 to Microsoft Windows 2000
Exam 70-028	Administering Microsoft SQL Server 7.0
Exam 70-029	Designing and Implementing Databases on Microsoft SQL Server 7.0
Exam 70-080	Implementing and Supporting Microsoft Internet Explorer 5.0 by Using the Internet Explorer Administrating Kit
Exam 70-081	Implementing and Supporting Microsoft Exchange Server 5.5
Exam 70-085	Implementing and Supporting Microsoft SNA Server 4.0
Exam 70-086	Implementing and Supporting Microsoft Systems Management Server 2.0
Exam 70-088	Implementing and Supporting Microsoft Proxy Server 2.0

注: 上表并不全面——应试者可以参加有关微软产品早期版本的考试。但是, 我们在这里所给出的都是最新版本的考试, 这样应试者通过这些考试后拿到的证书有效期能够长久一些。上表并没有列出那些即将撤销的考试。

* 不能同时选择两种。

如何准备考试

考试准备

为完成微软认证考试的复习，我们建议您首先从本书“Self-Assessment”（自我评价测试）开始。这会帮助读者正确评价自己在理想和实际情况下相对 MCSE 要求的知识水平。

我们强烈建议读者对将要参加考试的软件进行反复的练习，诸如安装、配置等方面的学习。因为对于在考试中可能遇到的问题，任何学习方法都不如亲自动手试验有效。书本学习固然重要，但是亲自动手试验是最好的老师。

针对任何有关 Windows 2000 MCSE 的考试，下面的材料将对读者有很大帮助：

<http://www.microsoft.com/trainingandservices/> 上的考试复习资料、实习测试及自我评估考试。

<http://www.examcram.com> 上的复习考试建议、实习测试、每日问题及讨论组等。

微软培训工具包——微软出版社为这些认证考试专门提供的工具包。如果想要更多信息，请访问 http://mspress.microsoft.com/findabook/list/series_ak.htm。在该工具包中读者可以找到自己所需要的考试复习资料。

微软技术资料 CD (Microsoft TechNet CD)——在每月出版的 CD 中包括全部 Windows 2000 网络架构及相关主题的资料。它提供了包括产品详细介绍、技术讲解、相应工具，以及有关如何访问为 Window 2000 网络架构举行的专业研讨会的在线培训资料等在内的大量信息。该 CD 每年预定费 299 美元。考试人员也可以访问 <http://www.microsoft.com/technet> 站点并查找 TechNet 预定菜单，以获得更多的信息。

学习指南——包括本出版社在内的数家出版社提供了有关 Windows 2000 MCSE 方面的图书。其中本社即将陆续出版的图书如下：

《考前冲刺》系列——为考试人员提供了如何通过考试的相关资料。

《考前辅导》系列——提供了比《考前冲刺》更为翔实的资料。

这两套丛书都是从考试的观点出发，目的是教会读者掌握 MCSE 认证考试的所有知识。同时拥有这两套丛书对通过考试来说非常有用。

此外，《考前辅导》还为读者准备了交互式多媒体考试模拟试题光盘，通过交互式多媒体光盘读者可以客观真实地体验 MCSE 考试。

参加认证考试

如果已经完成考试内容的复习，就可以到考试中心进行登记以参加考试。每一上机考试费用为 100 美元。如果考试没有通过，考试人员需要再付 100 美元重新考试。

考试的设计与安排

微软 Windows 2000 考试形式不同于以往的考试。对于设计考试 70-219、70-220 和 70-221，它们由一系列事例研究和六种不同类型的问题组成。对于核心的考试 70-210、70-215、70-216 和 70-217，同样会出现上述六种类型的问题，但是考试人员可能不会再遇到多问题的事例研究。

对于设计考试，每一事例研究提出一个详细的问题，考试人员必须认真阅读并加以分析。每一事例研究的相关问题为六种类型中的一种。认真对待事例中的细节是考试人员取得成功的关键。考试人员需要反复阅读事例研究及对应的试题才能知道如何回答问题。

完成一个事例研究后，可以检查试题及自己的答案。但是，一旦转移到下一个事例研究，就不能回到上一个事例研究，也不能再对答案进行任何改动。

六种试题类型为：（1）单选；（2）多选；（3）建立列表与记录器（排序）；（4）创建树；（5）拖动与连接；（6）选择与放置（拖放）。

试题类型的变动由考试中心进行，读者可以访问 <http://www.examcram.com> 查看试题类型。

考试形式

现在, 微软使用四种考试形式: (1) 事例研究 (case study); (2) 定长测试 (fixed length); (3) 适应性测试 (adaptive); (4) 简易格式测试 (short form)。

微软的设计考试使用事例研究。在这些考试中, 考试人员必须认真分析考题中给出的事例, 从而回答出与这个事例研究相关的问题。这种考试含有一个或多个事例研究 (主题标签), 每一个事例研究后面跟有 4 到 10 个问题。对于设计考试和四种核心 Windows 2000 考试, 其试题类型分别为选择题、建立列表和重新排序、创建树、拖动与连接, 以及选择与放置。不同的考试题目不太相同, 有些考试完全是基于事例的, 而其它则不是。

其它微软考试将使用具有更高测试性能的考试形式, 但这些形式可能不会立即出现。虽然试题类型主要为选择题, 但是逻辑性使其比过去的微软考试更加复杂。它使用了一组按固定顺序排列的问题, 一般称之为定长测试。一些试题使用一个较为完善的用户界面, 微软称之为仿真 (simulation)。用于测试考试人员在类似真实操作环境下, 对软件和系统知识的掌握。可到 <http://www.microsoft.com/trainingandservices/default.asp?PageID=mcp> 下载仿真练习。

适应性测试用于确定考试人员的知识水平和能力。适应性考试看起来与定长测试相似, 但是它们用于发现考生是否能够正确回答试题的难度水平。具有不同知识或能力水平的考试人员会见到不同的试题。知识或能力水平较高的考试人员将会得到一组题量较小而难度较大的试题; 相反, 知识或能力水平较低的考试人员将会得到一组题量较大而难度较小的试题。两部分考试人员答题的正确率可能相同, 但是那些知识或能力水平较高的考试人员将得到较高的分数, 因为他回答的问题所值的分数多一些。

同样, 那些知识或能力水平较低的考试人员可能回答出比那些知识或能力水平较高的考试人员更多的问题。这就说明了为什么适应性测试采用不同的试题数目和答题时间。

适应性考试是通过评估考试人员最近一次的答题来进行的。一个正确的回答将会给考试人员引出一道较难的问题 (同时, 测试软件对考试人员的知识和能力水平的评估也有所提高)。这种考试持续进行, 直到考查出考试人员的真实能力水平为止。当考试人员答题的正确度达到一个统计意义上的合意值 (换句话说, 证明自己已经达到考试所要求的知识与能力的水平) 时, 考试结束。或者, 考试人员已经完成所有给出的答题而仍未测试出自己的水平 (这种情况下, 考试几乎是失败了), 考试结束。

微软也为大部分流行考试引入了简易格式测试。这种考试为考试人员提供 25 到 30 道试题及 60 分钟的答题时间。

微软考试可以以任一种考试方式出现。在考试中, 无论遇到何种考试方式, 都必须按照该方式的要求进行答题, 而不能跳过去选择其它考试方式。

注意: 适应性测试与定长测试或简易格式测试之间最大的不同是, 在定长测试或简易格式测试中, 考试人员可以在反复阅读试题后再重新回到这些试题上。而在适应性考试中, 考试人员在试题出现以后, 就必须进行回答, 并且以后不会再有机会重新看到这些试题。

针对不同考试形式的应试策略

选择策略之前, 必须知道自己所遇到的考试形式: 事例研究测试、定长测试、简易格式测试或适应性测试。

如果参加的考试不是事例研究测试的形式, 则考试软件可能会通知考试人员该考试为适应性考试。如果考试的介绍没有提到适应性测试, 则可能是一个定长测试 (50 到 70 个问题)。如果考试题目的数量在 25 到 30 之间, 则是一个简易格式测试。有些考试会通知这次考试由一套适应性测试题开始, 接着是一些定长测试题。通过第一道试题应该能够知道所遇到的考试形式。

针对事例研究测试的应试策略

大部分考试人员发现用于设计考试（70-219，70-220，70-221）的事例研究考试类型是最难以掌握的。进行这种类型的考试时，最好的办法就是把每个事例研究都当作一个独立的考试。这类考试中最大的挑战就是考试人员会感到没有足够的时间去完成所有给出的事例。

每一个事例都提供大量的资料。在有效回答问题之前，需要阅读并研究这些资料。参加这类考试的窍门是首先浏览所给的事例以抓住重要部分。考试时必须保证已阅读了整个事例，这样才能理解问题的上下文。然后快速移到问题上面，并进行浏览。

一旦离开事例而移动到下一个事例，则不再允许返回到该事例。

针对定长测试和简易格式测试的应试策略

考试人员在参加定长测试或简易格式测试时，一个众所周知的原则就是首先从头到尾将所有问题浏览一遍，且只回答那些自己有绝对把握能正确回答的问题。随后，自己可以知道有多少问题留下未答，现在可以对这些复杂问题做更深的研究分析。

幸运的是，对于定长测试和简易格式测试，微软考试软件很容易实现多次浏览试题。在每一道试题的左上角有一个复选框，用于考试人员做出标记，以便以后重新浏览这道试题。

针对适应性测试的应试策略

适应性测试的应试原则可概括为“在第一次就答对问题”。考试人员在参加适应性测试中，不能选择跳过当前出现的试题而移动到下一道试题，因为考试软件要依据考试人员对当前试题的回答来选择下一道试题。由于这套考试软件只给考试人员一次答题机会，因此，一旦考试人员转移到下一试题，则无法再回到前面的试题。但是，考试人员可以做笔记，因为有时前面试题中的一些信息可能对后面试题的回答有所启发。

如果在适应性考试中考试人员遇到不能解答的试题，则必须立刻猜测一个答案。由于考试软件工作原理的缘故，如果猜测正确，考试人员将会受到猜测正确的对待。因此，接下来自己将会得到一道稍难一些的试题。

注意：如果考试人员参加的是定长测试或简易格式测试，则应等到最后检查有标记的试题时（正如自己将要用完答题时间，或根本就无法给出答案时），才可以开始对那些剩下的问题进行猜测。同样，在每一次事例研究测试中，考试人员可以采用相同的方法（但是，在这类考试中，一旦考试人员离开这道试题，就不再允许返回）。如果考试人员参加的是一次适应性测试，则应该在使用其它方法无法得到正确答案时，再进行猜测以移到下一道试题。不管怎么讲，猜题是考试人员所能采取的最后答题技巧。

许多试题都假定一个有特殊效用的默认行为在起作用，如果考试人员能够知道这个默认行为，就可以解开考试中的难题。

考试的核心策略

考试的核心是对于知识的掌握。我们应该明白，是知识培养了自信心，是自信心铸造了成功。如果读者能够认真学习本书中的内容，并复习每一章后面的习题，将会知道自己应在哪些方面补充知识和学习。

阅读本书时，应当进行本书及配套光盘上的测试。可以单击光盘上测试引擎中的更新按钮以从 <http://www.examcram.com> 上下载有关试题的更新。

进行模拟考试能够检查出自己的真实水平，并帮助自己知道哪些方面的知识需要进一步学习。

本文摘译自本书英文前言部分，读者应详细阅读本书的文前部分，以得到更详细的考试信息。翻译不妥之处，敬请见谅。

*I would like to dedicate this book to my wife, Carol,
who has shown me that a positive attitude has positive results.
Without the support and confidence you have bestowed upon me,
I could have never finished this book.*

*I would also like to dedicate this book to my father, who through his own actions
has taught me how to persevere through difficult times.*

—Lance Cockcroft



*To my father, who introduced me to punch card machines
and the world of computing back in the 1960s.*

—Erik Eckel



To my friends and crew. Without your help, this never would have been possible.

—Ron Kauffman



ABOUT THE AUTHORS

Lance Cockcroft (MCP+I, MCSE, MCT, CCNA, CCA, Net+) recently brought his more than 11 years of networking experience to SENETS Broadband of Atlanta, an Internet Service Provider utilizing the very latest in state-of-the-art system architecture. He currently serves in that organization in the capacity of Manager of Technology and Deployment.

Combining recognized technical expertise with an eminently successful instructional style, Lance remains a highly sought-after instructor, delivering training for numerous North Georgia universities and colleges, including Kennesaw and Southern Polytechnic State universities and Floyd College.

Lance is a native of north Georgia and has a Bachelor of Sciences degree in Information Technologies Management from Kennesaw State University.

Erik Eckel (MCP+I, MCSE) considers himself fortunate to have had a first-wave IT professional as a father. He grew up with computers in the house, including portable systems that debuted in the early 1970s. Erik attended the University of Louisville, where he received a Bachelor of Arts degree in English. He also graduated from Sullivan College, where he earned network engineer accreditation. He currently serves as Editor-in-Chief of IT Communities at **TechRepublic.com**.

When he's not banging away at a keyboard, Erik enjoys spending time with his wife and daughter, racing bicycles both on-road and off, and listening to classic 1950s jazz.

Ron Kauffman (MCP+I, MCSE, MCT, A+, Net+) is an infrastructure architect for a large health insurance company and teaches Microsoft and CompTIA certification classes for a local private college on evenings and weekends.

He graduated from Webster University with a Master of Arts degree in Information Management, and he also has degrees in Information Systems and Computer Science. Ron started his career automating systems in the U.S. Army Medical Corps, where he served as a Defense Data network Consultant. He left the military in 1995 in order to begin a career as a programmer/analyst.

In his spare time, he is a freelance writer and is an IS management consultant for local companies.

ACKNOWLEDGMENTS

Thanks to everyone at The Coriolis Group for their assistance in building this text. It was a pleasure working with such a first-class team.

Several individuals must be recognized for their hard work and diligent efforts in helping to prepare this book. Thanks to Shari Jo Hehr, the Senior Acquisitions Editor, for assistance in getting the project off the ground. Development Editor Deb Doorley deserves credit for getting the author team up-to-speed.

The contributions of Project Editors Sharon McCarson and Sally M. Scott are certainly appreciated. Their energy and assistance helped three authors with full-time IT careers stay on deadline with the goal of getting the best book possible into your hands quickly. Thanks, too, to Meg Turecek, Production Coordinator, for her assistance.

While books shouldn't be judged by their covers, it sure helps to have a great one. Thanks Jesse Dunne, Cover Designer, for your graphic work.

Thanks, too, to Cynthia Caldwell, Marketing Specialist. We appreciate your spreading the word.

We also wish to recognize Michelle McConnell, CD-ROM Developer; Mary Milhollon, Copyeditor; Rachel Pearce Anderson, Proofreader; and Tim Griffin, Indexer. Their contributions add much to the quality of this Exam Prep.

A special thanks is in order for Technical Reviewer James F. Kelly. His painstaking attention to detail and technical accuracy, combined with our research and testing, ensures you can use this text with utmost confidence. We're very thankful to have had his fact-checking and editing expertise. Thanks, Jim, for all your help.

We also wish to thank our families for the support and sacrifices they made while we wrote and edited this book. Thanks for understanding the time and energy this project required.

CONTENTS AT A GLANCE

CHAPTER 1	INTRODUCTION TO WINDOWS 2000
CHAPTER 2	WINDOWS 2000 INSTALLATION AND SETUP
CHAPTER 3	DNS AND THE ACTIVE DIRECTORY
CHAPTER 4	ACTIVE DIRECTORY DEFINED
CHAPTER 5	DESIGNING AND CONFIGURING THE FIRST DOMAIN
CHAPTER 6	ACTIVE DIRECTORY ADMINISTRATION
CHAPTER 7	PLANNING LARGER WINDOWS 2000 NETWORKS
CHAPTER 8	UNDERSTANDING AND CONFIGURING REPLICATION
CHAPTER 9	THE ACTIVE DIRECTORY SCHEMA
CHAPTER 10	ACTIVE DIRECTORY CONNECTOR ADMINISTRATION AND EXCHANGE SERVICE INTEROPERABILITY
CHAPTER 11	MANAGING DHCP AND WINS
CHAPTER 12	UNDERSTANDING AND ADMINISTERING DISK MANAGEMENT FUNCTIONALITY
CHAPTER 13	ADMINISTERING WINDOWS 2000 FILE SYSTEM
CHAPTER 14	CONTROLLING THE USER ENVIRONMENT WITH GROUP POLICIES
CHAPTER 15	GETTING A HANDLE ON SOFTWARE DEPLOYMENT
CHAPTER 16	CONFIGURING REMOTE ACCESS IN WINDOWS 2000
CHAPTER 17	UNDERSTANDING WINDOWS 2000 TERMINAL SERVICES
CHAPTER 18	PREVENTING AND PREPARING FOR DISASTER RECOVERY
CHAPTER 19	PLANNING AND IMPLEMENTING A WINDOWS NT 4 TO WINDOWS 2000 MIGRATION
CHAPTER 20	SECURING A WINDOWS 2000 NETWORK
CHAPTER 21	WINDOWS 2000 PROFESSIONAL
CHAPTER 22	SAMPLE TEST
CHAPTER 23	ANSWER KEY
APPENDIX A	ANSWERS TO REVIEW QUESTIONS
APPENDIX B	OBJECTIVES FOR EXAM 70-240
APPENDIX C	STUDY RESOURCES

EXAM INSIGHTS

Welcome to *MCSE Windows 2000 Accelerated Exam Prep*! This comprehensive study guide aims to help you get ready to take—and pass—Microsoft certification Exam 70-240, titled “Microsoft Windows 2000 Accelerated Exam for MCPs Certified on Microsoft Windows NT 4.0.” This Exam Insights section discusses exam preparation resources, the testing situation, Microsoft’s certification programs in general, and how this book can help you prepare for Microsoft’s Windows 2000 certification exams.

Exam Prep study guides help you understand and appreciate the subjects and materials you need to pass Microsoft certification exams. We’ve worked from Microsoft’s curriculum objectives to ensure that all key topics are clearly explained. Our aim is to bring together as much information as possible about Microsoft certification exams.

Nevertheless, to completely prepare yourself for any Microsoft test, we recommend that you begin by taking the Self-Assessment included in this book immediately following this Exam Insights section. This tool will help you evaluate your knowledge base against the requirements for an MCSE under both ideal and real circumstances.

Based on what you learn from that exercise, you might decide to begin your studies with some classroom training or some background reading. You might decide to read The Coriolis Group’s *Exam Prep* book that you have in hand first, or you might decide to start with another study approach. You may also want to refer to one of a number of study guides available from Microsoft or third-party vendors. We also recommend that you supplement your study program with visits to **ExamCram.com** to receive additional practice questions, get advice, and track the Windows 2000 MCSE program.

We also strongly recommend that you install, configure, and fool around with the software that you’ll be tested on, because nothing beats hands-on experience and familiarity when it comes to understanding the questions you’re likely to encounter on a certification test. Book learning is essential, but hands-on experience is the best teacher of all!

HOW TO PREPARE FOR AN EXAM

Preparing for any Windows 2000 Server-related test (including “Microsoft Windows 2000 Accelerated Exam for MCPs Certified on Microsoft Windows NT 4.0”) requires that you obtain and study materials designed to provide comprehensive information about the product and its capabilities that will appear on the specific exam for which you are preparing. The following list of materials will help you study and prepare:

- The Windows 2000 Server product CD includes comprehensive online documentation and related materials; it should be a primary resource when you are preparing for the test.
- The exam preparation materials, practice tests, and self-assessment exams on the Microsoft Training & Services page at **www.microsoft.com/trainingandservices/default.asp?PageID=mcp**. The Testing Innovations link offers samples of the new question types found on the Windows 2000 MCSE exams. Find the materials, download them, and use them!
- The exam preparation advice, practice tests, questions of the day, and discussion groups on the **ExamCram.com** e-learning and certification destination Web site (**www.examcram.com**).

In addition, you'll probably find any or all of the following materials useful in your quest for Windows 2000 expertise:

- *Microsoft training kits*—Microsoft Press offers training kits on Windows 2000 topics. For more information, visit: **<http://mspress.microsoft.com/findabook/list/subject-category-T.htm>**. This training kit contains information that you will find useful in preparing for the test.
- *Microsoft TechNet CD*—This monthly CD-based publication delivers numerous electronic titles that include coverage of Directory Services Design and related topics on the Technical Information (TechNet) CD. Its offerings include product facts, technical notes, tools and utilities, and information on how to access the Seminars Online training materials for TCP/IP. A subscription to TechNet costs \$299 per year, but it is well worth the price. Visit **www.microsoft.com/technet/** and check out the information under the “TechNet Subscription” menu entry for more details.
- *Study guides*—Several publishers—including The Coriolis Group—offer Windows 2000 titles. The Coriolis Group series includes the following:
 - *The Exam Cram series*—These books give you information about the material you need to know to pass the tests.

- *The Exam Prep series*—These books provide a greater level of detail than the *Exam Cram* books and are designed to teach you everything you need to know from an exam perspective. Each book comes with a CD that contains interactive practice exams in a variety of testing formats.

Together, the two series make a perfect pair.

- *Multimedia*—These Coriolis Group materials are designed to support learners of all types—whether you learn best by reading or doing:
 - *The Exam Cram Personal Trainer*—Offers a unique, personalized self-paced training course based on the exam.
 - *The Exam Cram Personal Test Center*—Features multiple test options that simulate the actual exam, including Fixed-Length, Random, Review, and Test All. Explanations of correct and incorrect answers reinforce concepts learned.
- *Classroom training*—CTECs, online partners, and third-party training companies (like Wave Technologies, Learning Tree, Data-Tech, and others) all offer classroom training on TCP/IP. These companies aim to help you prepare to pass the TCP/IP test. Although such training runs upwards of \$350 per day in class, most of the individuals lucky enough to partake (including your humble authors, who've even taught such courses) find them to be quite worthwhile.
- *Other publications*—There's no shortage of materials available about Active Directory, Windows 2000 Professional, network configuration and management, and the other areas that are covered by the 70-240 exam. The complete resource section in the back of the book should give you an idea of where we think you should look for further discussion.

By far, this set of required and recommended materials represents a nonpareil collection of sources and resources for TCP/IP and related topics. We anticipate that you'll find that this book belongs in this company.

TAKING A CERTIFICATION EXAM

Once you've prepared for your exam, you need to register with a testing center. Each computer-based Windows 2000 Accelerated exam is free, but if you don't pass you will not be able to take the test again. In the United States and Canada, tests are administered by Prometric (formerly Sylvan Prometric), and by Virtual University Enterprises (VUE). Here's how you can contact them:

- *Prometric*—You can sign up for a test through the company's Web site at **www.prometric.com**. Or, you can register by phone at 800-755-3926 (within the United States or Canada) or at 410-843-8000 (outside the United States and Canada).

- *Virtual University Enterprises*—You can sign up for a test or get the phone numbers for local testing centers through the Web page at www.vue.com/ms/.

To sign up for a test, you must possess a valid credit card, or contact either company for mailing instructions to send them a check (in the United States). Only when payment is verified, or a check has cleared, can you actually register for a test.

To schedule an exam, call the number or visit either of the Web pages at least one day in advance. To cancel or reschedule an exam, you must call before 7 P.M. pacific standard time the day before the scheduled test time (or you may be charged, even if you don't appear to take the test). When you want to schedule a test, have the following information ready:

- Your name, organization, and mailing address.
- Your Microsoft Test ID. (Inside the United States, this means your Social Security number; citizens of other nations should call ahead to find out what type of identification number is required to register for a test.)
- The name and number of the exam you wish to take.
- A method of payment. (As we stated earlier; however, the Accelerated exam is free.)

Once you sign up for a test, you'll be informed as to when and where the test is scheduled. Try to arrive at least 15 minutes early.

THE EXAM SITUATION

When you arrive at the testing center where you scheduled your exam, you'll need to sign in with an exam coordinator. He or she will ask you to show two forms of identification, one of which must be a photo ID. After you've signed in and your time slot arrives, you'll be asked to deposit any books, bags, or other items you brought with you. Then, you'll be escorted into a closed room.

All exams are completely closed book. In fact, you will not be permitted to take anything with you into the testing area, but you will be furnished with a blank sheet of paper and a pen or, in some cases, an erasable plastic sheet and an erasable pen. Before the exam, you should memorize as much of the important material as you can, so you can write that information on the blank sheet as soon as you are seated in front of the computer. You can refer to this piece of paper anytime you like during the test, but you'll have to surrender the sheet when you leave the room.

You will have some time to compose yourself, to record this information, and to take a sample orientation exam before you begin the real thing. We suggest you take the orientation test before taking your first exam, but because they're all more or less identical in layout, behavior, and controls, you probably won't need to do this more than once.

Typically, the room will be furnished with anywhere from one to half a dozen computers, and each workstation will be separated from the others by dividers designed to keep you from seeing what's happening on someone else's computer. Most test rooms feature a wall with a large picture window. This permits the exam coordinator to monitor the room, to prevent exam-takers from talking to one another, and to observe anything out of the ordinary that might go on. The exam coordinator will have preloaded the appropriate Microsoft certification exam—for this book, that's Exam 70-240—and you'll be permitted to start as soon as you're seated in front of the computer.

All Microsoft certification exams allow a certain maximum amount of time in which to complete your work (this time is indicated on the exam by an on-screen counter/clock, so you can check the time remaining whenever you like). (Microsoft has announced that the Accelerated exam should take four hours, although some testing centers are allowing six hours.) All Microsoft certification exams are computer generated. In addition to multiple choice, you'll encounter select and place (drag and drop), create a tree (categorization and prioritization), drag and connect, and build list and reorder (list prioritization) on most exams. Although this may sound quite simple, the questions are constructed not only to check your mastery of basic facts and figures about Windows 2000, but they also require you to evaluate one or more sets of circumstances or requirements. Often, you'll be asked to give more than one answer to a question. Likewise, you might be asked to select the best or most effective solution to a problem from a range of choices, all of which technically are correct. Taking the exam is quite an adventure, and it involves real thinking. This book shows you what to expect and how to deal with the potential problems, puzzles, and predicaments.

When you complete a Microsoft certification exam, the software will tell you whether you've passed or failed. Results are broken into several topic areas. Even if you fail, we suggest you ask for—and keep—the detailed report that the test administrator should print for you. You can use this report to help you prepare for another go-round, if needed.

In the next section, you'll learn more about how Microsoft test questions look and how they must be answered.

EXAM LAYOUT AND DESIGN

The format of Microsoft's Windows 2000 exams is different from that of its previous exams. For the design exams (70-219, 70-220, 70-221), each exam consists entirely of a series of case studies, and the questions can be of six types. For the Core Four exams (70-210, 70-215, 70-216, 70-217) and the Accelerated exam (70-240), the same six types of questions can appear, but you are not likely to encounter complex multiquestion case studies.

For design exams, each case study or "testlet" presents a detailed problem that you must read and analyze. Figure 1 shows an example of what a case study looks like. You must select the different tabs in the case study to view the entire case.

Following each case study is a set of questions related to the case study; these questions can be one of six types (which are discussed next). Careful attention to details provided in the case study is the key to success. Be prepared to toggle frequently between the case study and the questions as you work. Some of the case studies also include diagrams, which are called *exhibits*, that you'll need to examine closely to understand how to answer the questions.

Once you complete a case study, you can review all the questions and your answers. However, once you move on to the next case study, you may not be able to return to the previous case study and make any changes.

The six types of question formats are:

- Multiple choice, single answer
- Multiple choice, multiple answers
- Build list and reorder (list prioritization)
- Create a tree
- Drag and connect
- Select and place (drag and drop)

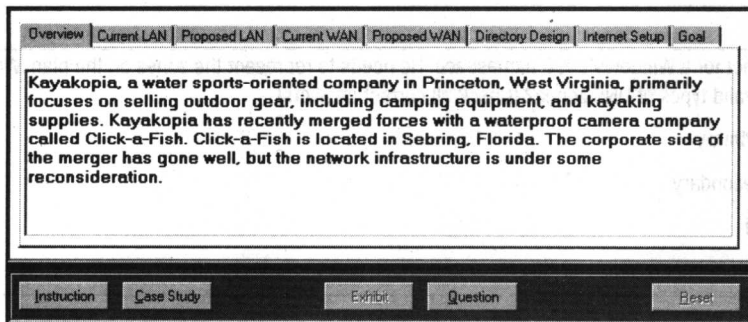


Figure 1 This is how case studies appear.