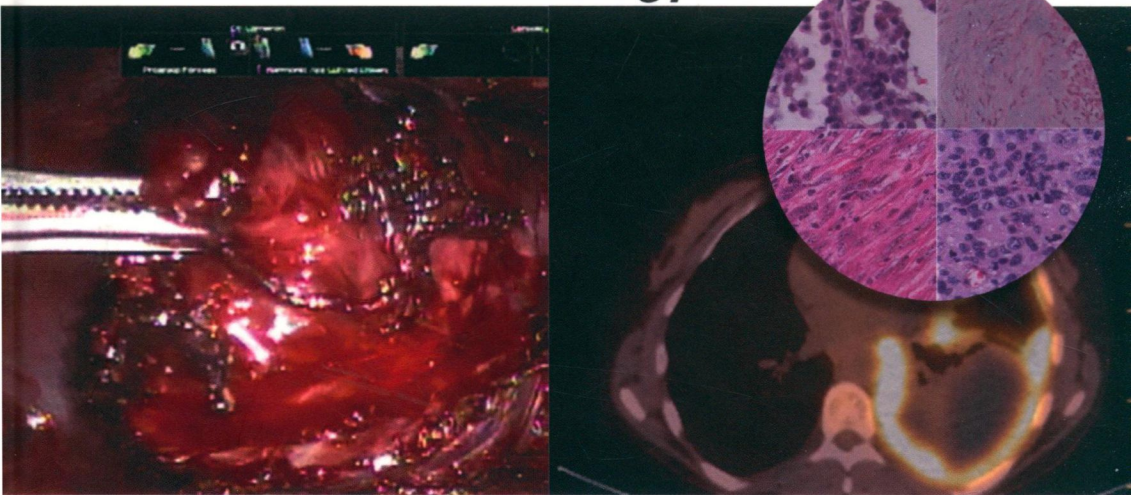


# MODERN THORACIC ONCOLOGY

**Volume 1 : General Principles of  
Thoracic Oncology**



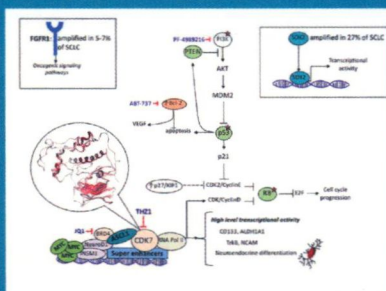
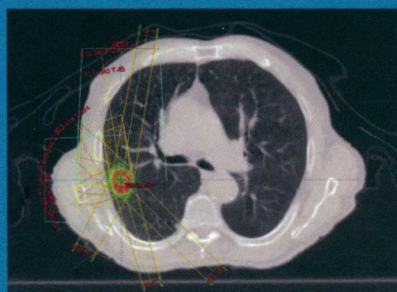
Robert B. Cameron • Diana Lin Gage • Olga Olevsky Editors

 World Scientific



# MODERN THORACIC ONCOLOGY

## Volume 1 : General Principles of Thoracic Oncology



Medicine has become highly specialized so that thoracic oncology is no longer a subspecialty of medical oncology or thoracic surgery. The field of Thoracic Oncology is a specialized area within oncology which is rapidly evolving, making it difficult to provide comprehensive, up to date textbooks. Overcoming these challenges, this three-volume set has recruited international experts to write concise, focused sections about their areas of specialization.

Comprehensive discussions about the basics of thoracic oncology and each specific tumor are discussed in detail in terms of biology, presentation, staging, pathology, treatments, including surgery, radiation, chemotherapy, as well as targeted/gene therapies and their complications. At present, *Modern Thoracic Oncology* is the only concise and comprehensive book that includes all chest malignancies.

**World Scientific**

[www.worldscientific.com](http://www.worldscientific.com)

9828 hc

ISBN 978-981-4725-51-4 (set)



9 789814 725514

ISBN 978-981-3236-28-8 (v1)



9 789813 236288



# MODERN THEORY OF COGNITIVE LINGUISTICS

Volume 1

Cameron  
Gage  
Olevsky



# MODERN THORACIC ONCOLOGY

**Volume 1 : General Principles of  
Thoracic Oncology**

Editors

**Robert B. Cameron**

University of California, Los Angeles, USA

West Los Angeles Veterans Administration Medical Center, USA

**Diana Lin Gage**

West Los Angeles Veterans Administration Medical Center, USA

University of California, Los Angeles, USA

**Olga Olevsky**

University of California, Los Angeles, USA

 **World Scientific**

NEW JERSEY • LONDON • SINGAPORE • BEIJING • SHANGHAI • HONG KONG • TAIPEI • CHENNAI • TOKYO

*Published by*

World Scientific Publishing Co. Pte. Ltd.

5 Toh Tuck Link, Singapore 596224

USA office: 27 Warren Street, Suite 401-402, Hackensack, NJ 07601

UK office: 57 Shelton Street, Covent Garden, London WC2H 9HE

**Library of Congress Cataloging-in-Publication Data**

Names: Cameron, Robert B., editor. | Gage, Diana Lin, editor. | Olevsky, Olga, editor.

Title: Modern thoracic oncology / editors, Robert B. Cameron, Diana Lin Gage, Olga Olevsky.

Description: New Jersey : World Scientific, 2018. | Includes bibliographical references and index.

Identifiers: LCCN 2017056795 | ISBN 9789814725514 (hardcover (set) : alk. paper) |

ISBN 9789813236288 (hardcover (volume 1) : alk. paper) |

ISBN 9789813236295 (hardcover (volume 2) : alk. paper) |

ISBN 9789813236301 (hardcover (volume 3) : alk. paper)

Subjects: | MESH: Thoracic Neoplasms

Classification: LCC RC280.C5 | NLM WF 970 | DDC 616.99/494--dc23

LC record available at <https://lcn.loc.gov/2017056795>

**British Library Cataloguing-in-Publication Data**

A catalogue record for this book is available from the British Library.

Copyright © 2018 by World Scientific Publishing Co. Pte. Ltd.

*All rights reserved. This book, or parts thereof, may not be reproduced in any form or by any means, electronic or mechanical, including photocopying, recording or any information storage and retrieval system now known or to be invented, without written permission from the publisher.*

For photocopying of material in this volume, please pay a copying fee through the Copyright Clearance Center, Inc., 222 Rosewood Drive, Danvers, MA 01923, USA. In this case permission to photocopy is not required from the publisher.

For any available supplementary material, please visit

<http://www.worldscientific.com/worldscibooks/10.1142/9828#t=suppl>

Typeset by Stallion Press

Email: [enquiries@stallionpress.com](mailto:enquiries@stallionpress.com)

Printed in Singapore

# **MODERN THORACIC ONCOLOGY**

**Volume 1 : General Principles of  
Thoracic Oncology**



# Foreword

Thoracic oncology includes the treatment of cancers of the lung/trachea, pleura, esophagus, mediastinum, and chest wall. Over the past two decades, therapy for this group of malignancies has evolved into a highly complex oncologic subspecialty. Elaborate multimodality treatment regimens utilizing biologics, chemotherapy, radiation, and surgery are now the rule rather than the exception. Furthermore, many existing complex therapies recently have become even more complicated by the introduction of *personalized care*. As our knowledge of cancer genetics and biology grows, the elaborate therapy webs promises to become even more intricate and challenging to comprehend. The rapidity with which our field of thoracic oncology is evolving is truly staggering. The need for a comprehensive thoracic oncology book to keep clinicians, be it pulmonologists, pathologists, radiologists, surgeons, medical oncologists, radiation oncologists, or gastroenterologists, up to date is paramount. Yet such books recently have not been forthcoming. One major obstacle to the production of an up-to-date thoracic oncology book is the traditionally slow production timeline compared to the current rapid pace of change in the field. We have attempted to overcome this hurdle by recruiting world expert authors for each specific and concise topic in thoracic oncology, (many of which together comprise a traditional book “chapter”) so that the information contained in each section can be reviewed, published, and updated rapidly — thereby keeping this book, *Modern Thoracic Oncology*, relevant and current. Whether one desires information regarding lung cancer screening, esophageal cancer staging, mutational analysis, targeted therapies, stereotactic ablative radiation with real-time imaging, minimally-invasive and robotic surgery, combination immunotherapy, microwave/cryoablation, or methods of early cancer detection, we have endeavored to encompass all of the latest information in the field



of thoracic oncology. With frequent future updates, we hope that this ambitious reference book will become your sourcebook for thoracic oncology.

We are indebted to the many national and international contributors for their thoughtful efforts. We also wish to acknowledge the staff at World Scientific Publishing for their help in producing the first edition of *Modern Thoracic Oncology*.

We are eternally grateful to our families, Betty, Cristina, Brian, Michael, and Angela Cameron; Will and Naomi Gage, Sam and Jennifer Lin; Emanuil and Leeza Olevsky, Roger Gillespie, Tony and Timmy Shar.

Robert B. Cameron  
Diana Lin Gage  
Olga Olevsky  
January 2018

# List of Contributors

**Fereidoun Abtin**

Department of Radiology, Thoracic Section  
David Geffen School of Medicine at UCLA  
Los Angeles, California, USA

**Rana Lee Adawi Awdish**

Henry Ford Hospital  
Detroit, MI, USA  
and  
Wayne State University  
School of Medicine  
Detroit, Michigan, USA

**Peter E. Ballmer**

Departement of Medicine  
Kantonsspital Winterthur  
Winterthur, Switzerland

**Stanley H. Benedict**

Department of Radiation Oncology  
University of California at Davis Comprehensive Cancer Center  
Sacramento, California, USA

**Said Chaaban**

Department of Internal Medicine  
Pulmonary and Critical Care Medicine  
University of Kentucky, Lexington, Kentucky, USA

**Daniel B. Costa**

Department of Medicine  
Division of Hematology/Oncology  
Beth Israel Deaconess Medical Center  
Harvard Medical School  
Boston, Massachusetts, USA

**Melissa Culligan**

University of Maryland  
Marlene and Steward Greenebaum Comprehensive Cancer Center  
Baltimore, Maryland, USA

**Amy Cummings**

Division of Hematology/Oncology  
David Geffen School of Medicine at UCLA  
Los Angeles, California, USA

**Megan E. Daly**

Department of Radiation Oncology  
University of California at Davis Comprehensive Cancer Center  
Sacramento, California, USA

**Thomas A. D'Amico**

Duke University Medical Center  
Duke South, White Zone  
Durham, North Carolina, USA

**André Emanuel Dutly**

Thoracic Surgery EOC Unit  
San Giovanni Hospital  
Bellinzona, Switzerland

**Paul Finn**

Department of Radiological Sciences, Cardiovascular Section  
David Geffen School of Medicine at UCLA  
Los Angeles, California, USA

**Joseph S. Friedberg**

University of Maryland

Marlene and Steward Greenebaum Comprehensive Cancer Center

Baltimore, Maryland, USA

**Patrizia Froesch**

FMH Medicina Interna e Oncologia medica

Caposervizio di Oncologia Medica

IOSI - Istituto Oncologico della Svizzera Italiana

Ospedale Distrettuale di Locarno

Locarno, Switzerland

**Mary T. Hawn**

Department of Surgery

School of Medicine

Stanford University

Stanford, California, USA

**Clayton B. Hess**

Department of Radiation Oncology

University of California at Davis Comprehensive Cancer Center

Sacramento, California, USA

**Vera Hirsh**

Department of Oncology

McGill University

Montreal, Canada

**Carla Holcomb**

Department of Surgery

School of Medicine

University of Alabama

Birmingham, Alabama, USA



**Reinhard Imoberdorf**

Departement of Medicine  
Kantonsspital Winterthur  
Winterthur, Switzerland

**Annelies Janssens**

Department of Thoracic Oncology  
Antwerp University Hospital  
Edegem, Belgium

**Melanie Keith**

Integrative Medicine Service  
Kaiser Permanente Walnut Creek Hospital  
Walnut Creek, California, USA

**Rodney J. Landreneau**

Department of Cardiothoracic Surgery  
University of Pittsburgh  
Pittsburg, Pennsylvania, USA

**Xiuning Le**

Department of Medicine  
Division of Hematology/Oncology  
Beth Israel Deaconess Medical Center  
Harvard Medical School  
Boston, Massachusetts, USA

**Steve P. Lee**

Department of Radiation Oncology  
David Geffen School of Medicine at UCLA  
Los Angeles, California, USA

**Anita Chen Marshall**

Integrative Medicine Service  
Kaiser Permanente Walnut Creek Hospital  
Walnut Creek, California, USA

**Kelly McCann**

Division of Hematology/Oncology  
David Geffen School of Medicine at UCLA  
Los Angeles, California, USA

**Michael McCulloch**

Integrative Medicine Service  
Kaiser Permanente Walnut Creek Hospital  
Walnut Creek, California, USA

**Jan P van Meerbeeck**

Department of Thoracic Oncology  
Antwerp University Hospital  
Edegem, Belgium

**Drew Moghanaki**

Department of Radiation Oncology  
Hunter Holmes McGuire Veterans Affairs Medical Center  
Richmond, Virginia, USA

**Deborah Moran**

Division of Palliative Care  
Greater Los Angeles Veterans Administration Health System  
Los Angeles, California, USA

**Arian Nachat**

Integrative Medicine Service  
Kaiser Permanente Walnut Creek Hospital  
Walnut Creek, California, USA

**David M. Naeger**

Department of Radiology and Biomedical Imaging  
University of California, San Francisco  
San Francisco, California, USA

**Thanh H. Neville**

Division of Pulmonary and Critical Care  
David Geffen School of Medicine at UCLA  
Los Angeles, California, USA

**Olga Olevsky**

Division of Hematology/Oncology  
David Geffen School of Medicine at UCLA  
Los Angeles, California, USA

**Kelsey Pomykala**

UCLA Department of Radiological Sciences  
David Geffen School of Medicine at UCLA  
Los Angeles, California, USA

**Kathleen Ruchalski**

Department of Radiological Sciences, Thoracic Section  
David Geffen School of Medicine at UCLA  
Los Angeles, California, USA

**Joseph K. Salama**

Department of Radiation Oncology  
Duke University  
Durham, North Carolina, USA

**Siddharth Saraiya**

Department of Radiation Oncology  
The University of Toledo  
Toledo, Ohio, USA

**Mary Sehl**

Division of Hematology/Oncology  
David Geffen School of Medicine at UCLA  
Los Angeles, California, USA

**Aditya Shetty**

Division of Hematology/Oncology  
David Geffen School of Medicine at UCLA  
Los Angeles, California, USA

**Joshua Sonett**

Section of Thoracic Surgery  
Columbia University Medical Center  
New York, NY, USA

**Robert Suh**

UCLA Department of Radiological Sciences  
David Geffen School of Medicine at UCLA  
Los Angeles, California, USA

**Robert Trelease**

Department of Pathology and Laboratory Medicine  
David Geffen School of Medicine at UCLA  
Los Angeles, California, USA

**Darko Vodopich**

Integrative Medicine Service  
Kaiser Permanente Walnut Creek Hospital  
Walnut Creek, California, USA

**Anne M. Walling**

Division of General Internal Medicine and Health Services Research  
David Geffen School of Medicine at UCLA and  
Division of Palliative Care  
Greater Los Angeles Veterans Administration Health System  
Los Angeles, California, USA

**Deborah Wang**

Department of Medicine  
David Geffen School of Medicine at UCLA  
Los Angeles, California, USA



**W. Richard Webb**

Department of Radiology and Biomedical Imaging  
University of California, San Francisco  
San Francisco, California, USA

**Neil S. Wenger**

Division of General Internal Medicine and Health Services Research  
David Geffen School of Medicine at UCLA  
Los Angeles, California, USA