

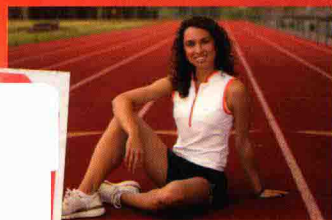
Free Gray/Color Checker Card Inside!

Brian McLernon

Canon®

# PowerShot G11

*Digital Field Guide*



Canon<sup>®</sup>  
**PowerShot G11**

*Digital Field Guide*

Brian McLernon



Wiley Publishing, Inc.

## Canon® PowerShot G11 Digital Field Guide

Published by  
Wiley Publishing, Inc.  
10475 Crosspoint Boulevard  
Indianapolis, IN 46256  
[www.wiley.com](http://www.wiley.com)

Copyright © 2010 by Wiley Publishing, Inc., Indianapolis, Indiana

Published simultaneously in Canada

ISBN: 978-0-470-56508-7

Manufactured in the United States of America

10 9 8 7 6 5 4 3 2 1

No part of this publication may be reproduced, stored in a retrieval system or transmitted in any form or by any means, electronic, mechanical, photocopying, recording, scanning or otherwise, except as permitted under Sections 107 or 108 of the 1976 United States Copyright Act, without either the prior written permission of the Publisher, or authorization through payment of the appropriate per-copy fee to the Copyright Clearance Center, 222 Rosewood Drive, Danvers, MA 01923, (978) 750-8400, fax (978) 646-8600. Requests to the Publisher for permission should be addressed to the Permissions Department, John Wiley & Sons, Inc., 111 River Street, Hoboken, NJ 07030, 201-748-6011, fax 201-748-6008, or online at <http://www.wiley.com/go/permissions>.

**LIMIT OF LIABILITY/DISCLAIMER OF WARRANTY: THE PUBLISHER AND THE AUTHOR MAKE NO REPRESENTATIONS OR WARRANTIES WITH RESPECT TO THE ACCURACY OR COMPLETENESS OF THE CONTENTS OF THIS WORK AND SPECIFICALLY DISCLAIM ALL WARRANTIES, INCLUDING WITHOUT LIMITATION WARRANTIES OF FITNESS FOR A PARTICULAR PURPOSE. NO WARRANTY MAY BE CREATED OR EXTENDED BY SALES OR PROMOTIONAL MATERIALS. THE ADVICE AND STRATEGIES CONTAINED HEREIN MAY NOT BE SUITABLE FOR EVERY SITUATION. THIS WORK IS SOLD WITH THE UNDERSTANDING THAT THE PUBLISHER IS NOT ENGAGED IN RENDERING LEGAL, ACCOUNTING, OR OTHER PROFESSIONAL SERVICES. IF PROFESSIONAL ASSISTANCE IS REQUIRED, THE SERVICES OF A COMPETENT PROFESSIONAL PERSON SHOULD BE SOUGHT. NEITHER THE PUBLISHER NOR THE AUTHOR SHALL BE LIABLE FOR DAMAGES ARISING HEREFROM. THE FACT THAT AN ORGANIZATION OR WEB SITE IS REFERRED TO IN THIS WORK AS A CITATION AND/OR A POTENTIAL SOURCE OF FURTHER INFORMATION DOES NOT MEAN THAT THE AUTHOR OR THE PUBLISHER ENDORSES THE INFORMATION THE ORGANIZATION OF WEB SITE MAY PROVIDE OR RECOMMENDATIONS IT MAY MAKE. FURTHER, READERS SHOULD BE AWARE THAT INTERNET WEB SITES LISTED IN THIS WORK MAY HAVE CHANGED OR DISAPPEARED BETWEEN WHEN THIS WORK WAS WRITTEN AND WHEN IT IS READ.**

For general information on our other products and services or to obtain technical support, please contact our Customer Care Department within the U.S. at (877) 762-2974, outside the U.S. at (317) 572-3993 or fax (317) 572-4002.

Wiley also publishes its books in a variety of electronic formats. Some content that appears in print may not be available in electronic books.

Library of Congress Control Number: 2009943648

**Trademarks:** Wiley and the Wiley Publishing logo are trademarks or registered trademarks of John Wiley & Sons, Inc. and/or its affiliates. All other trademarks are the property of their respective owners. Wiley Publishing, Inc. is not associated with any product or vendor mentioned in this book.



# About the Author

**Brian McLernon** is a commercial freelance photographer, educator, and writer based in Portland, Oregon. Originally from New Jersey, he was educated in Arizona, Philadelphia, and New York City. Brian shoots primarily for editorial, commercial, corporate, and lifestyle clients: locations, portraits, products, travel, public relations events, weddings, high-school seniors, artworks, sports, special events, and more, capturing moments and telling visual stories.

To share his passion for photography, Brian conducts workshops in photography and lighting for Portland Community College's adult education series. He is often honored to be a guest speaker for several artistic associations, communication groups, and business organizations, and enjoys speaking to student groups as well. When he's not photographing in the studio or on location, Brian spends time with his wife and daughter, family and friends, camping, travelling, white-water rafting, cross-country and downhill skiing, and of course, photographing nature and all kinds of motorsports.

This is his third book for Wiley Publishing, Inc.

# Credits

## **Acquisitions Editor**

Courtney Allen

## **Project Editor**

Chris Wolfgang

## **Technical Editor**

Marianne Jensen

## **Copy Editor**

Kim Heusel

## **Editorial Director**

Robyn Siesky

## **Editorial Manager**

Cricket Krengel

## **Business Manager**

Amy Knies

## **Senior Marketing Manager**

Sandy Smith

## **Vice President and Executive Group**

### **Publisher**

Richard Swadley

## **Vice President and Executive Publisher**

Barry Pruett

## **Project Coordinator**

Lynsey Stanford

## **Graphics and Production Specialists**

Jennifer Mayberry

Mark Pinto

## **Proofreading and Indexing**

Laura Bowman

Valerie Haynes Perry

*To Kevin, Sean, and Charlotte, who were there from the very beginning.*



# Acknowledgments

Although one name appears on the cover, this project brought an entire team of people together in seemingly unrelated ways that all contributed to the creation of this book. Today we live in an age of community, and I would be remiss if I didn't mention mine — these wonderful folks who answered my calls, spent hours discussing technical details, and volunteered time and suggestions to help me create this book.

To Dean Collins, the master of lighting and Photoshop guru who showed me that photography is all about the light instead of the gear. His knowledge of how to manipulate light and his entertaining teaching style has made a lasting impression on me. Though Dean is no longer with us, I am forever in his debt.

To Bob and Shirley Hunsicker of Pharos Studios, my early mentors in studio photography and business, whose guidance and friendship contribute immeasurably to my photographic career.

To photographers Galen Rowell, Dewitt Jones, George Lepp, and John Shaw who conducted workshops that keyed me in to the technical considerations of natural light and shared concepts and approaches to nature photography that I still use today.

To photographers David Hobby, Joe McNally, Syl Arena, Chase Jarvis, and John Harrington who share their photographic expertise through blogs and Web sites in their selfless desire to see all photographers succeed. I am indebted to them for sharing their experiences that enhance all I attempt to accomplish in photography.

To Mark Fitzgerald of the Digital Darkroom, my local Photoshop guru, who was never too busy to answer my calls and e-mails with answers to my questions and for providing his invaluable insight into the book-writing process.

To Courtney Allen, my acquisitions editor for this edition and first contact at Wiley, for taking me under her wing and providing friendship and encouragement and bringing me into the Wiley fold — may you rock to the metal always.

To Chris Wolfgang, my project editor, for her attention to every detail of this book, including her advice on image selection, captions, and sentence structure. Her contributions never failed to make this book better.

To Kim Heusel and Marianne Jensen, my copy and technical editors, whose comments and suggestions I thoroughly enjoyed. So glad to have them on the team.

To the fine team at Wiley Publishing for their skillful editing, marketing insight, and constant support and encouragement.

Finally, to my wife Gayle and daughter Brenna, who allowed me to disappear into my studio cave to shoot and write and make my deadlines, all the while providing those smiles, support, and laughter that make my life a joy.

# Introduction

Welcome to the new Digital Field Guide for the Canon PowerShot G11. Whether you are holding this book or your new G11 digital camera in your hands, you are holding a fantastic tool that will assist you in creating awesome photographs that you will be proud to display and share with your family and friends.

When the PowerShot G series was introduced almost ten years ago with the G1, many photographers were overjoyed at the prospect of being able to shoot with an affordable, full-featured digital camera in a lightweight, compact design.

Canon now ups the ante with the PowerShot G11 and a host of fantastic improvements, including a new 10-megapixel sensor, new DiG!C 4 processor, improved and expanded ISO sensitivity and range, Auto ISO, Image Stabilization, enhanced iContrast to deliver better coverage from low light shadow details to highlights with minimized blow out, special face recognition and self-timer modes, and probably the most impressive to many, the return of the beautiful 2.8 inch flip-out adjustable TFT LCD Monitor, last seen on the PowerShot G6 in 2004.

Learning how to properly use your new G11 is only the beginning to creating great photographs. You'll also learn about the subtleties of light and some compositional aids, and the how, when, and why you should use them. I cover camera placement and styles of lighting for different and creative effects. *Canon PowerShot G11 Digital Field Guide* will take you beyond the everyday use of your camera and start you on the path to creating truly dazzling images.

This book seeks to help you to better understand and use your new Canon PowerShot G11 and provides a handy compilation of tips on the capabilities of photography and your G11 in particular.



# Short History of Canon's PowerShot Cameras

The first Canon PowerShot digital cameras debuted in July 1996 with the PowerShot 600. Although considered inadequate by today's standards, the 600 was a breakthrough camera that offered digital capture in a small compact unit and featured JPEG, TIFF, RAW, and audio-capture WAVE files. This camera was limited by its single ISO setting of 100, small memory capabilities (1MB on board, Type II and III PC card), tiny 1/3-inch image sensor, and total pixel count of only 570,000.

The PowerShot A series was introduced with the A5 in April 1998 followed by the A5 Zoom, released in October the same year. Their compact design featured a special duralumin alloy metal casing and a motorized retracting lens system, that permitted the camera to fit easily into a shirt pocket or briefcase for go-anywhere digital capture of images.

The Canon PowerShot S-series was introduced in October 1999 and included improvements that PowerShot users had requested, such as five new Shooting modes and advanced functions that included Spot Metering, AE Lock, and ISO sensitivity settings from 100 to 400, a Compact Flash (CF) card, and Red-eye reduction, all in a lightweight, highly mobile compact-camera-sized package.

The first PowerShot digital ELPH camera was the S100, and it was released in May of 2000. This model combined convenience, ease of use, and a look that made a distinct fashion statement. It also offered broad appeal to a wide range of users that positioned the ELPH to create an entirely new digital-camera market for the active user who wanted the smallest high-performance digital camera available at the time.

Hot on the heels of the ELPH S100 was the first of the G-series cameras, the G1, which debuted in October 2000. This feature-rich camera was a welcome addition to many professional photographers as a small back-up solution to their dSLRs. The G1 included a mechanical and electronic shutter system, digital zoom functions, expanded ISO settings from 50 to 400, along with a new Auto ISO mode from 50 to 100. The G1 also included a hot shoe with sync-terminals that communicated directly with the Canon Speedlites 220EX, 380EX, 420EX and 550EX.

Canon improved the G-series by releasing a new model nearly every year and upping the designation by one for each new release. The G-series became the top-tier cameras in Canon's digital compact lineup, often referred to as point-and-shoot cameras.

Pros were attracted to their retro design and external controls, such as the exposure compensation, ISO, and shooting mode dials. The G-series continued to improve with the G2, G3, G5, G6, G7, G9, and G10.



There were no G-series cameras with a 4 or 8 designation.

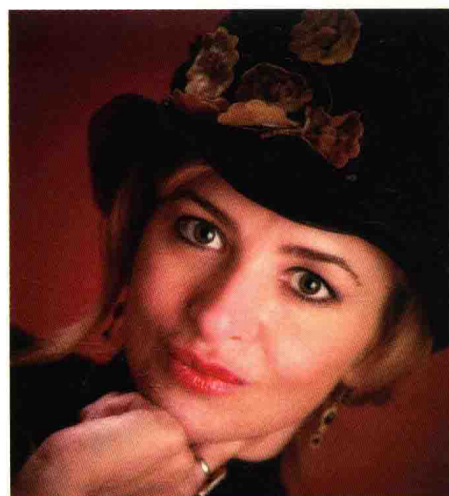
Industry buzz on the G11 has been swift, and many believe this new PowerShot has retired, or at least stalled, the megapixel wars by dropping the pixel count on the G11 and including a faster processor to handle images. Canon reduced the megapixel resolution to 10 from 14.5 and kept the same lens as the G10. Canon says its new Dual Anti-Noise System combines a high sensitivity 10.0 megapixel image sensor with Canon's enhanced DiG!C 4 image processing technology to increase image quality and greatly improve noise performance by up to 2 stops (compared to the PowerShot G10).

Further G11 improvements over the G10 include a higher 1/2000-second flash synchronization speed and an HDMI port for reviewing images on a high-definition TV. The flash sync is impressive, especially when you consider that the PowerShot G11 is fully compatible with the 270EX, 430EX II, and 580EX II Speedlites plus the ST-E2 Speedlite transmitter. Even the MT-24EX macro twin-lite and MR-14EX macro ring-lite can be used for macro photography with the PowerShot G11.

## What You'll Learn from This Book

This book is written for those Canon PowerShot G11 owners who may be new to photography and seeking professional results with their new camera. *Canon PowerShot G11 Digital Field Guide* also strives to be a great resource to learning about all the exciting new features of the PowerShot G11; and as a digital field guide, it is small enough to fit conveniently in your camera bag. Take it along with you and let it assist you in understanding the technical data, as well as offer up creative ideas to make your photography a fun and rewarding endeavor.

This book offers you a solid foundation of photographic fundamentals along with fun tips, tricks, and advice based on the real-world experiences of a working commercial photographer who has been using digital cameras for many years. I am excited to be a part of your journey — a tour guide, if you will — on your path to producing fantastic images with your Canon PowerShot G11.



# Contents

<b>Acknowledgments</b>	<b>ix</b>
<b>Introduction</b>	<b>xvi</b>

<b>QT</b>	
<b>Quick Tour</b>	<b>1</b>
Getting Up and Running Quickly . . . . .	2
Charging the battery . . . . .	4
Setting the display language . . . . .	5
Setting the date and time . . . . .	5
Formatting the memory card . . . . .	7
Setting the image quality . . . . .	8
Setting the ISO . . . . .	8
Setting Auto White Balance . . . . .	9
Taking Your First Photos with Your	
PowerShot G11 . . . . .	9
Choosing a Shooting mode . . . . .	10
Choosing a Scene mode . . . . .	10
Reviewing images . . . . .	11
Deleting images . . . . .	11

<b>CHAPTER 1</b>	
<b>Anatomy of the PowerShot G11</b>	<b>13</b>
Camera Controls . . . . .	14
4-Way Controller . . . . .	14
Top camera controls . . . . .	15
Rear camera controls . . . . .	17
Front camera controls . . . . .	20
Camera terminals . . . . .	21
Side and bottom camera features . . . . .	22
LCD Monitor Screen . . . . .	23
Positioning . . . . .	24
Quick Shot mode . . . . .	25
Face Detection modes . . . . .	27
Grid Display . . . . .	28
Clock Display . . . . .	29
Lens Controls . . . . .	29
Image Stabilization . . . . .	30
Optical zoom . . . . .	31



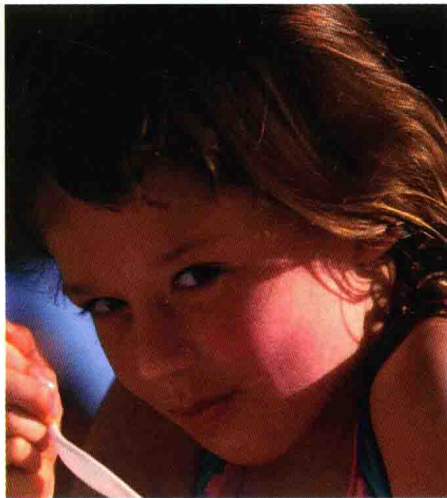
Digital zoom . . . . .	33
Digital Tele-Converter . . . . .	33
Canon CCD Sensor . . . . .	33
DiGiC Image Processor . . . . .	34

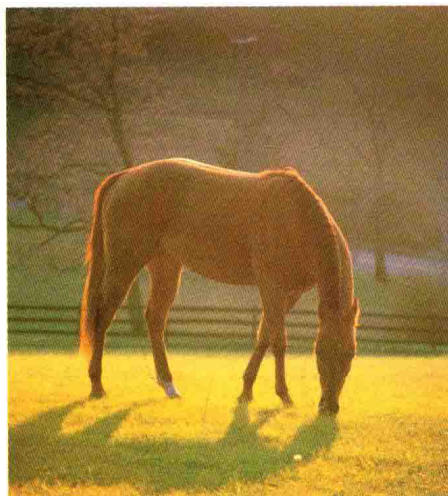
CHAPTER 2

Using the PowerShot G11 Menus

35

Camera and Shooting Functions . . . . .	36
Shooting Menu . . . . .	37
AF Frame . . . . .	38
Digital Zoom . . . . .	38
AF-point Zoom . . . . .	38
Servo AF . . . . .	39
Continuous AF . . . . .	39
AF-assist beam . . . . .	39
MF-point Zoom . . . . .	40
Safety MF . . . . .	41
Wind Filter . . . . .	41
Flash Control . . . . .	41
i-Contrast . . . . .	43
Spot AE Point . . . . .	43
Safety Shift . . . . .	44
Review . . . . .	44
Review Info . . . . .	44
Blink Detection . . . . .	45
Custom Display . . . . .	45
Reverse Display . . . . .	46
IS mode . . . . .	46
Converter . . . . .	47
Date/Time Stamp . . . . .	47
Record RAW +JPEG . . . . .	47
Set Shortcut button . . . . .	47
Save Settings . . . . .	48
Set-up Menu . . . . .	48
Mute . . . . .	49
Volume . . . . .	49
Sound Options . . . . .	49
Hints and Tips . . . . .	50
LCD Brightness . . . . .	50
Start-up Image . . . . .	50
Format . . . . .	50
File Numbering . . . . .	51
Create Folder . . . . .	52
Lens Retract . . . . .	52





Power Saving .....	52
Time Zone .....	52
Date/Time .....	53
Distance Units .....	53
Video System .....	53
Language .....	54
Reset All .....	54
Playback Menu .....	54
Slideshow .....	54
Erase .....	55
Protect .....	55
Rotate .....	56
My Category .....	56
i-Contrast .....	57
Red-Eye Correction .....	57
Trimming .....	58
Resize .....	59
My Colors .....	60
Scroll Display .....	61
Resume .....	61
Transition .....	61
Print Menu .....	61
My Menu Settings .....	63

## CHAPTER 3

### Choosing Settings

#### on the Canon PowerShot G11 **65**

Creating Folders on the Memory Card .....	66
Setting File Numbering .....	66
Choosing the File Format and Quality .....	67
JPEG settings .....	68
RAW settings .....	68
Choosing an Exposure Mode .....	69
Full Auto .....	69
Program AE .....	71
Shutter Priority AE .....	72
Aperture Priority AE .....	73
Manual .....	74
C1 and C2 modes .....	75
Low Light mode .....	75
Quick Shot mode .....	77
Scene modes .....	77
Movie mode .....	81

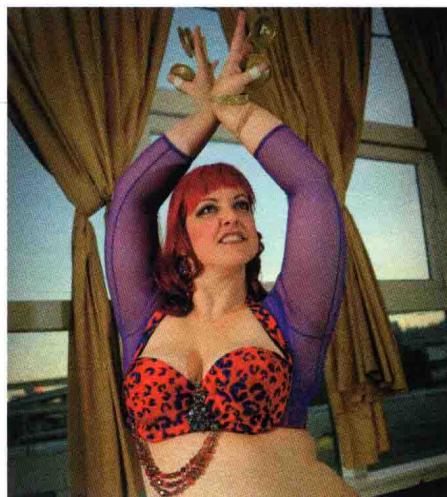
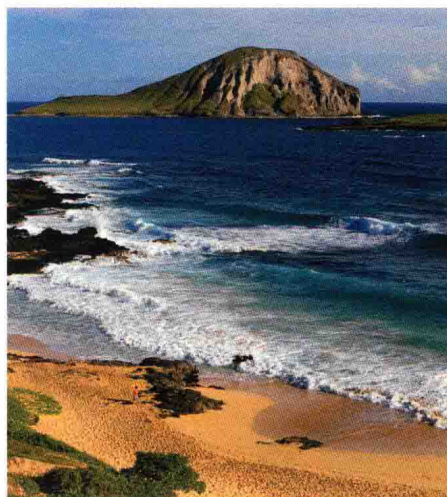


Autofocus and selecting autofocus modes . . . . .	81
Improving autofocus accuracy and performance. . . . .	83
Modifying Exposure. . . . .	83
Auto Exposure Lock . . . . .	84
Flash Exposure Lock. . . . .	85
Auto Exposure Bracketing . . . . .	85
Exposure Compensation. . . . .	86
ND filter . . . . .	88
Setting the ISO . . . . .	89
Auto ISO . . . . .	90
Manually setting the ISO . . . . .	90
Selecting a Drive Mode . . . . .	90
Single Shot mode . . . . .	90
Continuous mode . . . . .	90
Continuous AF mode . . . . .	91
Continuous LV mode . . . . .	91
Self-timer modes . . . . .	92
Face Self-timer mode . . . . .	92
Customizing the Self-timer . . . . .	93
Viewing and Playing Back Images . . . . .	93
Playback display options. . . . .	94
Adding effects with My Colors. . . . .	95
Red-Eye Correction. . . . .	95
Correcting contrast with iContrast . . . . .	96
Jump quickly through images. . . . .	97
Index display. . . . .	98
Viewing slide shows. . . . .	99
Viewing images on a TV . . . . .	100
Viewing images on a high-definition TV. . . . .	100
Erasing Images . . . . .	101
Protecting Images . . . . .	103
Restoring the Camera's Default Settings. . . . .	104

## CHAPTER 4

### Light and Color 105

About Light . . . . .	106
Color . . . . .	107
Quality. . . . .	107
Direction . . . . .	108





Understanding and Controlling Exposure . . .	111
Using aperture . . . . .	111
Using shutter speed . . . . .	113
Using ISO . . . . .	114
Understanding and Setting the	
White Balance . . . . .	114
Choosing a preset white balance . . . . .	115
Setting a custom white balance . . . . .	115
Setting a white balance shift . . . . .	118
About My Colors . . . . .	119
Color Accent . . . . .	120
Color Swap . . . . .	121
Custom Colors . . . . .	124
Using the Onboard Flash . . . . .	124
Flash Exposure Compensation . . . . .	125
Shutter sync . . . . .	125
Red-Eye Reduction lamp . . . . .	125
Safety FE . . . . .	126

<b>CHAPTER 5</b>	
<b>Making Movies with Your</b>	
<b>PowerShot G11</b>	<b>127</b>
Setting Up the G11 to Shoot Movies . . . . .	128
MOV format . . . . .	129
Shooting modes . . . . .	130
Sound . . . . .	133
Image quality . . . . .	134
Maximum file size and runtime . . . . .	134
Shooting Movies . . . . .	136
Composition . . . . .	136
Zooming . . . . .	137
Playback . . . . .	137

<b>CHAPTER 6</b>	
<b>Everyday Picture-taking Situations</b>	
<b>with Your PowerShot G11</b>	<b>141</b>
Action and Sports Photography . . . . .	142
Preparation and considerations . . . . .	144
Action tips and advice . . . . .	148
Concert and Event Photography . . . . .	150
Preparation and considerations . . . . .	150
Concert tips and advice . . . . .	152



Landscape and Travel Photography. . . . . 155

    Preparation and considerations. . . . . 157

    Landscape tips and advice . . . . . 161

Macro and Close-Up Photography. . . . . 164

    Preparation and considerations. . . . . 166

    Macro tips and advice. . . . . 169

Portrait Photography . . . . . 172

    Outdoor portraits . . . . . 174

    Group portraits . . . . . 176

    Night portraits. . . . . 177

    Portrait tips and advice . . . . . 179

Wedding Photography. . . . . 181

    Preparation and considerations. . . . . 181

    Wedding tips and advice. . . . . 181

Wildlife and Pet Photography . . . . . 185

    Preparation and considerations. . . . . 185

    Wildlife tips and advice. . . . . 187

**APPENDIX A**

**Rules of Composition** . . . . . 189

**APPENDIX B**

**Accessories** . . . . . 203

**APPENDIX C**

**Resources** . . . . . 215

**APPENDIX D**

**How to Use the Gray Card and Color Checker** . . . . . 219

**Glossary** . . . . . 221

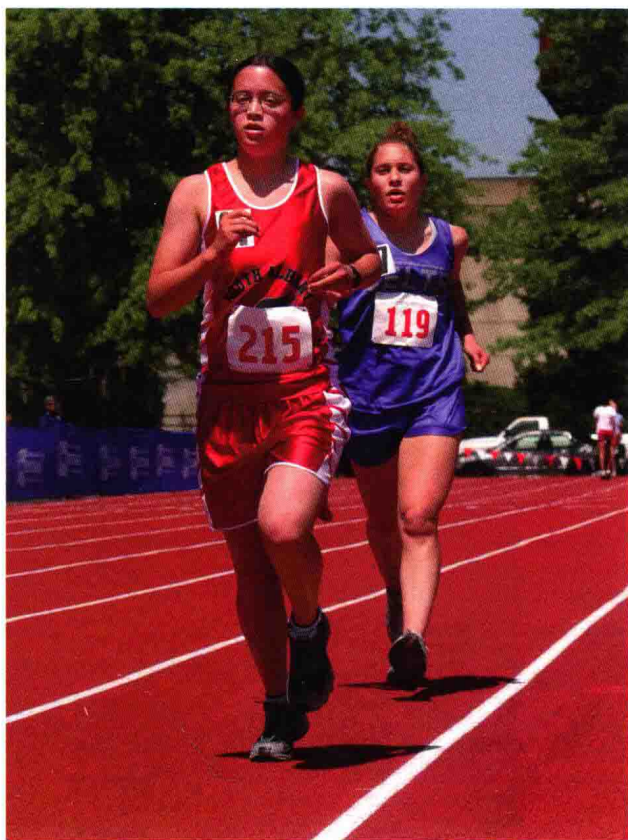
**Index** . . . . . 229



# Quick Tour

Many photographers, both amateur and professional, relish that special joy of bringing new camera equipment home, opening the boxes, and taking the gear out for a test drive to see what it can do, whether it's a camera, lens, or special accessory.

As a professional photographer, that excitement has not diminished in the least, but I do take a bit of time now to check out all the buttons, menus, and external camera controls before making photographs with the new gear. I want to learn to see as the camera sees.



**The PowerShot G11 is speedy enough to capture these long-distance runners at a recent track meet. Taken in Aperture Priority at ISO 800, f/11, 1/800 second with a 21.7mm lens setting.**