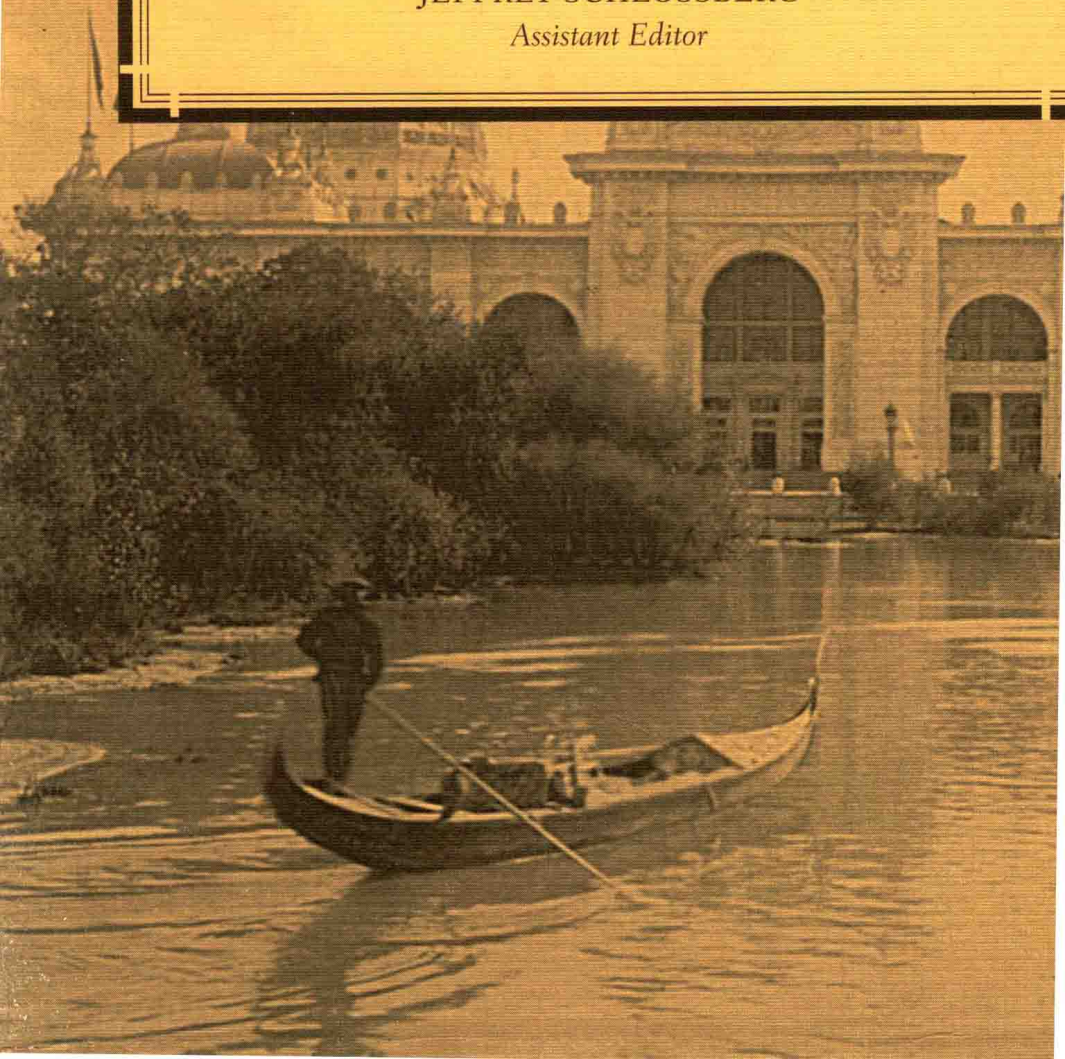


THE PAPERS OF
FREDERICK LAW
OLMSTED

VOLUME IX
THE LAST GREAT
PROJECTS
1890–1895

DAVID SCHUYLER and GREGORY KALISS
Editors

JEFFREY SCHLOSSBERG
Assistant Editor



VOLUME IX

THE
LAST GREAT
PROJECTS

1890–1895

DAVID SCHUYLER

GREGORY KALISS

Editors

JEFFREY SCHLOSSBERG

Assistant Editor

JOHNS HOPKINS UNIVERSITY PRESS
Baltimore

© 2015 Johns Hopkins University Press
All rights reserved. Published 2015
Printed in the United States of America on acid-free paper
9 8 7 6 5 4 3 2 1

Johns Hopkins University Press
2715 North Charles Street
Baltimore, Maryland 21218-4363
www.press.jhu.edu

Library of Congress Cataloging-in-Publication Data
(Revised for vol. 9)

Olmsted, Frederick Law, 1822–1903.
The papers of Frederick Law Olmsted.

Includes bibliographical references and indexes.

Contents: v. 1. The formative years, 1822–1852 — v. 2. Slavery and the South, 1852–1857 — v. 3. Creating Central Park, 1857–1861 — v. 4. Defending the Union, 1861–1863 — v. 5. The California frontier, 1863–1865 — v. 6. The years of Olmsted, Vaux & Company, 1865–1874 — v. 7. Parks, politics, and patronage, 1874–1882 — v. 8. The early Boston years, 1882–1890 — v. 9. The last great projects, 1890–1895. Supplementary series: v. 1. Writings on public parks, parkways, and park systems — v. 2. Plans and views of public parks.

1. Olmsted, Frederick, 1822–1903. 2. Landscape architects — United States — Correspondence. 3. Landscape architects — United States — Biography. I. McLaughlin, Charles Capen. II. Beveridge, Charles E. III. Title.

SB470.05A2 1977	712	77-741
ISBN 0-8018-1798-6 (v. 1)	ISBN 0-8018-8336-9 (v. 7)	
ISBN 0-8018-2242-4 (v. 2)	ISBN 978-1-4214-0926-9 (v. 8)	
ISBN 0-8018-2751-5 (v. 3)	ISBN 978-1-4214-1603-8 (v. 9)	
ISBN 0-8018-3967-2 (v. 4)	ISBN 978-0-8018-5532-0 (suppl. ser. v. 1)	
ISBN 0-8018-3885-1 (v. 5)	ISBN 978-1-4214-1086-9 (suppl. ser. v. 2)	
ISBN 0-8018-4198-4 (v. 6)		

A catalog record for this book is available from the British Library.

Special discounts are available for bulk purchases of this book. For more information, please contact Special Sales at 410-516-6936 or specialsales@press.jhu.edu.

Johns Hopkins University Press uses environmentally friendly book materials, including recycled text paper that is composed of at least 30 percent post-consumer waste, whenever possible.

In 1890, Frederick Law Olmsted, then nearly sixty-eight years old, had risen to the pinnacle of his career. Together with his partners, stepson John Charles Olmsted and protégé Henry Sargent Codman, he was involved in a number of major ongoing projects, including the Boston, Buffalo, and Rochester park systems, the campus plan for Stanford University, and numerous private estates. In July, he reported that the firm had "twenty works of considerable importance" underway, including nine large parks and six estates that he believed were "matters of public interest." Before the summer ended, the firm's commitments expanded dramatically when Olmsted and his partners were appointed landscape architects for the World's Columbian Exposition in Chicago. As commissions for new park systems, residential communities, grounds for educational institutions, and private homes increased, Olmsted feared that their commitments would exceed the partners' ability to do their best work.

Despite these fears, Olmsted's work in the final six years of his professional career only enhanced his considerable reputation, as the ninth and final volume of *The Papers of Frederick Law Olmsted* makes clear. With its impressive waterways, monumental buildings, and verdant islands and shores, the Chicago fair proved to be one of the firm's crowning achievements. The early 1890s also saw the culmination of Olmsted's wide-ranging work on one of his other great projects: the design of the grounds of George W. Vanderbilt's massive estate, Biltmore, near Asheville, North Carolina. In planning the estate's thousands of acres, Olmsted outlined new approaches to landscape design, promoted the creation of the first scientific forestry operation in the United States, designed a model residential subdivision, and proposed an arboretum that would have been the most ambitious in the nation.

THE PAPERS OF
FREDERICK LAW
OLMSTED

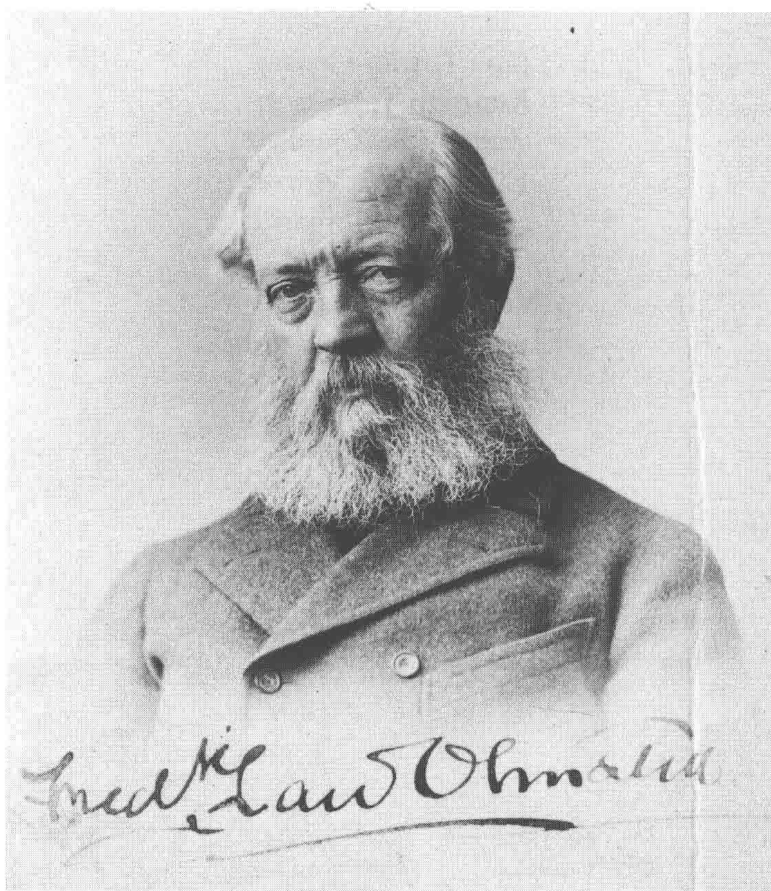
EDITORIAL STAFF

Charles E. Beveridge
Series Editor

ADVISORY BOARD

David Schuyler, Chair
Daniel B. Botkin
Jane Turner Censer
Kenneth T. Jackson
Francis R. Kowsky
Elizabeth K. Meyer
Keith N. Morgan
Laurie D. Olin
Victoria Post Ranney
Elizabeth Barlow Rogers
Frederick R. Steiner
Robert D. Yaro

THE PAPERS OF
FREDERICK LAW
OLMSTED



ILLUSTRATIONS

FREDERICK LAW OLNSTED Courtesy of Burnham Collection, Ryerson & Burnham Archives, Art Institute of Chicago. *Frontispiece*

RHODODENDRONS ALONG LOWER APPROACH ROAD, BILTMORE PHOTOGRAPH BY WILLIAM HENRY JACKSON Courtesy of Prints and Photographs Division, Library of Congress, Washington, D.C. (4a09531) 7

ESPLANADE, BILTMORE HOUSE AND STABLES, GARDEN TERRACE AND RAMBLE PHOTOGRAPH BY WILLIAM HENRY JACKSON Courtesy of Prints and Photographs Division, Library of Congress, Washington, D.C. (4a16855) 8

"GUIDE MAP OF BILTMORE ESTATE, 1896" Courtesy of The Biltmore Company 10

"WORLD'S COLUMBIAN EXPOSITION BLOCK PLAN SHOWING PROPOSED LOCATION," JANUARY 7, 1891 (Plan 274-z1.tif) Courtesy of the National Park Service, Frederick Law Olmsted National Historic Site, Brookline, Mass. 21

COURT OF HONOR, WORLD'S COLUMBIAN EXPOSITION, WITH ADMINISTRATION BUILDING IN DISTANCE (ICHi-02524) Courtesy of Chicago History Museum 22

ILLUSTRATIONS

- "REVISED GENERAL PLAN FOR JACKSON PARK, 1895" (Plan 903-01902-15)
 Courtesy of the National Park Service, Frederick Law Olmsted National Historic Site, Brookline, Mass. 45
- DANIEL H. BURNHAM Courtesy of Burnham Collection, Ryerson & Burnham Archives, Art Institute of Chicago 66
- HENRY SARGENT CODMAN, c. 1892 Courtesy of Burnham Collection, Ryerson & Burnham Archives, Art Institute of Chicago 68
- CHARLES ELIOT Courtesy of President and Fellows of Harvard College, Arnold Arboretum Archives 71
- RICHARD MORRIS HUNT PORTRAIT BY JOHN SINGER SARGENT, 1895 Courtesy of The Biltmore Company 73
- FREDERICK LAW OLMSTED, JR. Courtesy of the National Park Service, Frederick Law Olmsted National Historic Site, Brookline, Mass. 76
- JOHN CHARLES OLMSTED, c. 1892 Courtesy of Burnham Collection, Ryerson & Burnham Archives, Art Institute of Chicago 79
- GEORGE W. VANDERBILT Courtesy of The Biltmore Company 82
- GIRLS PLAYING ON GYMNAS TIC EQUIPMENT, CHARLESBANK (Photo Album 152-20) Courtesy of the National Park Service, Frederick Law Olmsted National Historic Site, Brookline, Mass. 89
- "STUDY FOR ALTERATIONS AT THE RESIDENCE OF J. J. ALBRIGHT," April 16, 1890 (Plan 247-22) Courtesy of the National Park Service, Frederick Law Olmsted National Historic Site, Brookline, Mass. 94
- PAVILION AT HIGHLAND PARK, ROCHESTER, N.Y. (1104-14A) Courtesy of the National Park Service, Frederick Law Olmsted National Historic Site, Brookline, Mass. 105
- "PRELIMINARY SKETCH SUGGESTION OF REVISION OF PREMISES ATTACHED TO RESIDENCE OF J. J. ALBRIGHT ESQ., BUFFALO, N.Y." May 17, 1890 (Plan 247-3) Courtesy of the National Park Service, Frederick Law Olmsted National Historic Site, Brookline, Mass. 120
- PLANS FOR SMALL PLACES, May 28, 1890 From *Garden and Forest*, May 28, 1890 Courtesy of Winterthur Museum, Garden & Library 132

ILLUSTRATIONS

- EXAMINING THE APPROACH ROAD, BILTMORE (Photograph 401816r)
Courtesy of The Biltmore Company 136
- FIRST STUDY OF POSSIBLE SITES FOR BUILDINGS IN JACKSON PARK FOR WORLD'S
COLUMBIAN EXPOSITION, with the notation "OLMSTED'S MAP OF
AUG 12TH 1890" Courtesy of The Getty Research Institute, Los An-
geles, California 172
- "PLAT SHOWING RAILROAD CONNECTIONS TO NORTH SIDE SITE," SHOWING
ITS RELATIONSHIP TO DOWNTOWN CHICAGO From *The North Shore
Site* (Chicago, 1890) Courtesy of Chicago History Museum 188
- DRAWING OF PROPOSED NORTH SHORE SITE FOR THE WORLD'S COLUMBIAN
EXPOSITION From *The North Shore Site* (Chicago, 1890) Cour-
tesy of Chicago History Museum 189
- PLAN FOR A SMALL TOWN PLACE From *Garden and Forest*, September 17,
1890 Courtesy of Winterthur Museum, Garden & Library 209
- PERGOLA, BILTMORE (407014r) Courtesy of The Biltmore Company 223
- PLAN OF WORLD'S COLUMBIAN EXPOSITION, November 1890 Courtesy of
Chicago History Museum 232
- PLAN OF WORLD'S COLUMBIAN EXPOSITION, December 1890 Courtesy of
Chicago History Museum 233
- "DESIGN MAP OF THE VILLAGE OF LAKE WAUCONDA IN PERRY PARK, DOUGLAS
COUNTY, COL.," March 28, 1890 (Plan 1091-180) Courtesy of the
National Park Service, Frederick Law Olmsted National Historic Site,
Brookline, Mass. 238
- BALCONIES IN PARAPET WALL OVERLOOKING RAM BRANCH SCENERY, LOWER
APPROACH ROAD, BILTMORE, c. 1891 (401615r) Courtesy of The
Biltmore Company 305
- ISLANDS IN THE LAKE, BILTMORE, c. 1895 (401831r) Courtesy of The Bilt-
more Company 306
- WOMEN'S GYMNASIUM AND TURF PLAYGROUND, CHARLESBANK Courtesy of
the National Park Service, Frederick Law Olmsted National Historic
Site, Brookline, Mass. 314

“GIANT STRIDE” IN THE CORNER, CHARLESBANK (Photo Album 152–22) Courtesy of the National Park Service, Frederick Law Olmsted National Historic Site, Brookline, Mass. 314

MEN’S GYMNASTIC APPARATUS, CHARLESBANK (Photo Album 907–01–ph152–40a) Courtesy of the National Park Service, Frederick Law Olmsted National Historic Site, Brookline, Mass. 315

DENSE PLANTING ALONG RAM BRANCH, LOWER APPROACH ROAD, BILTMORE (401837r) Courtesy of The Biltmore Company 318

PLANTATION OF EVERGREEN CANE BREAK ALONG LOWER APPROACH ROAD, BILTMORE, c. 1895 (Photo 401644r) Courtesy of The Biltmore Company 319

WOODED ISLAND AND FOOTPRINT OF SURROUNDING BUILDINGS, WORLD’S COLUMBIAN EXPOSITION (Plan 274–13) Courtesy of the National Park Service, Frederick Law Olmsted National Historic Site, Brookline, Mass. 323

DENSE PLANTING ON SHORE OF WOODED ISLAND, WORLD’S COLUMBIAN EXPOSITION (Photo Album 274 [ph00d]) Courtesy of the National Park Service, Frederick Law Olmsted National Historic Site, Brookline, Mass. 324

DRAWING OF WALK AND SHADED SEAT, POINT D’ACADIE, BAR HARBOR, MAINE (1232–z5) Courtesy of the National Park Service, Frederick Law Olmsted National Historic Site, Brookline, Mass. 356

“GENERAL PLAN FOR HIGHLAND PARK,” ROCHESTER, N.Y. (Plan 1104–02) Courtesy of the National Park Service, Frederick Law Olmsted National Historic Site, Brookline, Mass. 365

VIEW ALONG CREEK, CHEROKEE PARK, LOUISVILLE, KENTUCKY Courtesy of Caulfield & Shook Studio Collection, Archives and Special Collections, Ekstrom Library, University of Louisville 378

AGASSIZ BRIDGE, BACK BAY FENS, BOSTON, PHOTOGRAPH BY DETROIT PUBLISHING COMPANY (det.4a24016) Courtesy of Prints and Photographs Division, Library of Congress 383

ILLUSTRATIONS

- ROUGH STONEWORK, OVERLOOK STEPS, FRANKLIN PARK, BOSTON Courtesy of the National Park Service, Frederick Law Olmsted National Historic Site, Brookline, Mass. 385
- SHELTER ON SCHOOLMASTER HILL, FRANKLIN PARK, BOSTON (Plan 918–88) Courtesy of the National Park Service, Frederick Law Olmsted National Historic Site, Brookline, Mass. 388
- REFECTORY BUILDING, FRANKLIN PARK, HARTWELL AND RICHARDSON, ARCHITECTS, 1895 From City of Boston, Document 25–1895 Courtesy of City of Boston Archives 389
- “PLAN OF LOGAN PLACE,” LOUISVILLE, 1892 (Plan 1268–03) Courtesy of the National Park Service, Frederick Law Olmsted National Historic Site, Brookline, Mass. 415
- “SKETCH OF ARBOR, LOGAN PLACE” (Plan 1268–03) Courtesy of the National Park Service, Frederick Law Olmsted National Historic Site, Brookline, Mass. 416
- “GENERAL PLAN OF FRANKLIN PARK, BOSTON, 1891” (Plan 918–1891 litho) Courtesy of the National Park Service, Frederick Law Olmsted National Historic Site, Brookline, Mass. 482
- PHOTOGRAPH OF SCARBORO POND AND BRIDGE, FRANKLIN PARK, BOSTON (918–213) Courtesy of the National Park Service, Frederick Law Olmsted National Historic Site, Brookline, Mass. 484
- “SKETCH FOR PROPOSED PARADE GROUND NEAR FRANKLIN PARK,” BOSTON (Plan 917–5) Courtesy of the National Park Service, Frederick Law Olmsted National Historic Site, Brookline, Mass. 488
- ELECTRIC LAUNCHES ON THE LAGOON, WORLD’S COLUMBIAN EXPOSITION From Hubert Howe Bancroft, *The Book of the Fair* (Chicago, 1893) Courtesy of Library of Congress 490
- VENETIAN GONDOLA ON THE LAGOON, WITH WOODED ISLAND ON LEFT AND MINES BUILDING IN DISTANCE, WORLD’S COLUMBIAN EXPOSITION From Hubert Howe Bancroft, *The Book of the Fair* (Chicago, 1893) Courtesy of Library of Congress 492

ILLUSTRATIONS

JULES-FÉLIX COUTAN, *THE CITY OF PARIS, ON HER BARGE ENVIRONED BY SCIENCE, INDUSTRY, AGRICULTURE, AND ART, ENLIGHTENING THE WORLD WITH FLAMBEAU*, L'EXPOSITION UNIVERSELLE, PARIS, 1889
 Courtesy of Prints and Photographs Division, Library of Congress (lot 6634, no. 71) 511

FREDERICK MACMONNIES, *COLUMBIAN FOUNTAIN*, WORLD'S COLUMBIAN EXPOSITION (ICHi-02502) Courtesy of Chicago History Museum 512

PALMS LINING THE TERRACE OF PALAIS DES BEAUX-ARTS, L'EXPOSITION UNIVERSELLE, PARIS, 1889 Courtesy of Prints and Photographs Division, Library of Congress (lot 6634, no. 56) 519

TROPICAL PALMS IN TUBS ON PEDESTALS ALONG SOUTH CANAL, LOOKING TOWARD AGRICULTURE BUILDING AND THE INTRAMURAL RAILWAY STATION, WORLD'S COLUMBIAN EXPOSITION (photo album 2 274-02 [ph00d]) Courtesy of the National Park Service, Frederick Law Olmsted National Historic Site, Brookline, Mass. 519

PLAN AND ELEVATION OF ENTRANCE GATE AND WALL, HOT SPRINGS RESERVATION (Plan 1244-11) Courtesy of the National Park Service, Frederick Law Olmsted National Historic Site, Brookline, Mass. 585

MAP OF THE BUILDINGS AND GROUNDS OF THE WORLD'S COLUMBIAN EXPOSITION AT JACKSON PARK AND MIDWAY PLAISANCE, CHICAGO, ILL. U.S.A. 1893 Courtesy of the National Park Service, Frederick Law Olmsted National Historic Site, Brookline, Mass. 672

WOODED ISLAND WITH HORTICULTURAL BUILDING IN DISTANCE From Hubert Howe Bancroft, *The Book of the Fair* (Chicago, 1893) Courtesy of Library of Congress 676

DENSE PLANTING ON SHORE OF WOODED ISLAND, WITH HO-O-DEN TEMPLE IN DISTANCE (Photo album 274-01 [ph00b]) Courtesy of the National Park Service, Frederick Law Olmsted National Historic Site, Brookline, Mass. 677

GARDEN TERRACE, BILTMORE (405737r) Courtesy of The Biltmore Company 692

ILLUSTRATIONS

- MUDDY RIVER UNDER CONSTRUCTION (Photograph 927-11) Courtesy of the National Park Service, Frederick Law Olmsted National Historic Site, Brookline, Mass. 702
- ISLANDS IN THE MUDDY RIVER FROM ST. MARY'S STREET FOOT-BRIDGE (Plan 930-51) Courtesy of the National Park Service, Frederick Law Olmsted National Historic Site, Brookline, Mass. 703
- "THE PARKWAY, BROOKLINE" (Photograph 927-03) Courtesy of the National Park Service, Frederick Law Olmsted National Historic Site, Brookline, Mass. 703
- "STUDY OF SKELETON PLAN FOR BILTMORE VILLAGE" DEC. 9, 1893 (Plan 170-165) Courtesy of the National Park Service, Frederick Law Olmsted National Historic Site, Brookline, Mass. 724
- CHRISTIAN WAHL Courtesy of the Milwaukee County Historical Society 752
- ESTATE OFFICE, FACING THE PLAZA IN BILTMORE VILLAGE (409044r) Courtesy of The Biltmore Company 763
- "PLAN FOR LAYING OUT THE MIDWAY PLAISANCE," SHOWING CANAL CONNECTING LAGOON IN JACKSON PARK WITH THE MERE IN WASHINGTON PARK, CHICAGO (Plan 1900-168-44) Courtesy of the National Park Service, Frederick Law Olmsted National Historic Site, Brookline, Mass. 765
- VIEW TOWARD TERRACE OF THE DAVID B. JONES HOUSE, LAKE FOREST, ILL. Courtesy of the National Park Service, Frederick Law Olmsted National Historic Site, Brookline, Mass. 784
- TEA HOUSE OR PAVILION AT SOUTHWEST CORNER OF THE SOUTH TERRACE, BILTMORE (405132r) Courtesy of The Biltmore Company 789
- "THE PARKWAY. SKETCH OF THE GENERAL PLAN OF JAMAICA AND LEVERETT PARKS, BOSTON, AUG. 18, 1894" (Plan 920-z1) Courtesy of the National Park Service, Frederick Law Olmsted National Historic Site, Brookline, Mass. 819
- PRELIMINARY PLAN FOR GROUNDS OF HAROLD BROWN, ESQ. NEWPORT, R.I., AUG. 30, 1894 (Plan 1726-4) Courtesy of the National Park Service, Frederick Law Olmsted National Historic Site, Brookline, Mass. 824

ILLUSTRATIONS

- PRELIMINARY PLAN FOR GROUNDS OF HAROLD BROWN, ESQ., NEWPORT, R.I., SEPT. 11, 1894 (Plan 1726-6) Courtesy of the National Park Service, Frederick Law Olmsted National Historic Site, Brookline, Mass. 825
- "PRELIMINARY SKETCH OF RIDGEWOOD PARK, BROOKLYN, N.Y.," June 22, 1894 (Plan 12161-10) Courtesy of the National Park Service, Frederick Law Olmsted National Historic Site, Brookline, Mass. 827
- VIEW OF MOUNTAIN FROM NEAR THE HOUSE, THE ROCKS, LITTLETON, N.H. (Photo 1128-11) Courtesy of the National Park Service, Frederick Law Olmsted National Historic Site, Brookline, Mass. 837
- "FREDK LAW OLMSTED 9/30/94 ROCKS IN DRIVEWAY TURN," THE ROCKS, LITTLETON, N.H. Courtesy of Glessner House Museum, Chicago, Illinois 838
- QUARRY, LOWER APPROACH ROAD, BILTMORE, c. 1895 (401594r) Courtesy of The Biltmore Company 856
- "SKETCH PLAN AND ELEVATION OF BAY IN ARBOR OF FLOWER GARDEN," BILTMORE (Plan 170-229) Courtesy of the National Park Service, Frederick Law Olmsted National Historic Site, Brookline, Mass. 859
- "STUDY FOR SPRING GARDEN, BILTMORE" (Plan 170-257) Courtesy of the National Park Service, Frederick Law Olmsted National Historic Site, Brookline, Mass. 883
- THE RAMBLE OR SHRUBBERY FROM THE SOUTH TERRACE, BILTMORE (401598r) Courtesy of The Biltmore Company 884
- BOATS AND BOATHOUSE, JAMAICA POND, BOSTON (920F27 [43057]) Courtesy of the National Park Service, Frederick Law Olmsted National Historic Site, Brookline, Mass. 903
- SUB-TROPICAL LUXURIANCE ALONG LOWER APPROACH ROAD, BILTMORE (401636r) Courtesy of The Biltmore Company 932
- ANDREW JACKSON DOWNING, c. 1851 Courtesy of The Athenaeum of Philadelphia 971
- THE BACK BAY FENS (Plan 916-22) Courtesy of the National Park Service, Frederick Law Olmsted National Historic Site, Brookline, Mass. 994

ILLUSTRATIONS

PIER HEAD BUILDING AT MARINE PARK, BOSTON (926–02) Courtesy of the
National Park Service, Frederick Law Olmsted National Historic
Site, Brookline, Mass. 1008

PASTORAL SCENERY IN FRANKLIN PARK, BOSTON (918–198) Courtesy of the
National Park Service, Frederick Law Olmsted National Historic
Site, Brookline, Mass. 1009

ACKNOWLEDGMENTS

The editors are grateful to Charles Beveridge, Series Editor, for all his help with this volume. The Frederick Law Olmsted Papers publication project began in earnest in 1972, the sesquicentennial of Olmsted's birth. In that year founding editor Charles Capen McLaughlin hired Charles E. Beveridge as associate editor. Charlie Beveridge has in the years since guided the project, working with a succession of editors, and has shared his vast knowledge of Olmsted's life and work with us. Charlie made the preliminary selection of documents for this volume, advised us on illustrations, and reviewed the introduction and annotation we have written. His expertise at every step of the process has been essential to the completion of this volume. That the previously published volumes have garnered consistently high reviews is testament to his high standards. We are grateful for everything Charlie has given to the series, and to us, as a mentor and friend.

The editors are grateful to the Andrew W. Mellon Foundation for its longtime support of the Olmsted Papers and especially for the preparation of this volume. This volume also received substantial support from other foundations and individuals, including the C. E. and S. Foundation, the Richard H. Driehaus Foundation, the Margaret L. Wendt Foundation, Jean McKee, Victoria Post Ranney and George A. Ranney, Jr., Mimi Batchelder-Brown, and Susan Klaus, as well as significant funding from individuals and foundations who prefer to remain anonymous. We are especially indebted to Caroline Loughlin, both for her unstinting financial support of the Olmsted Papers and for her reading of the introduction and the first chapters of this volume before her declining health and death deprived us of one of the strongest supporters of the preservation of the humanly created landscape.