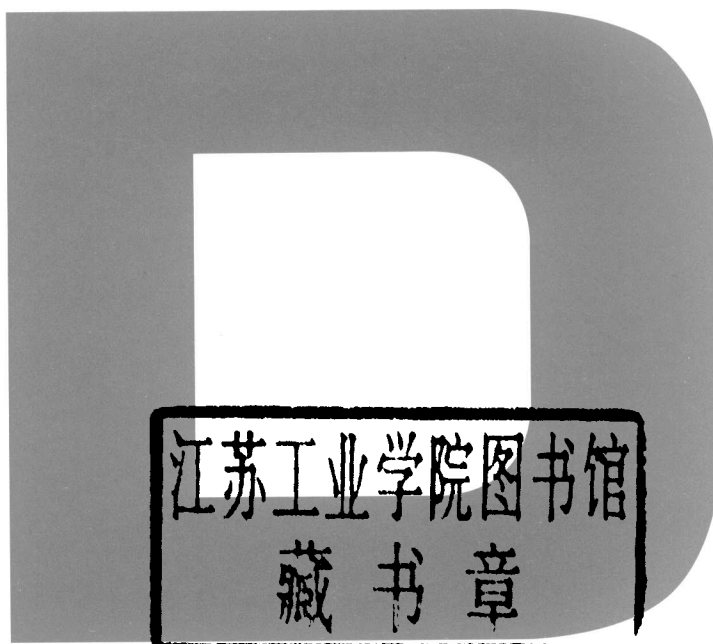
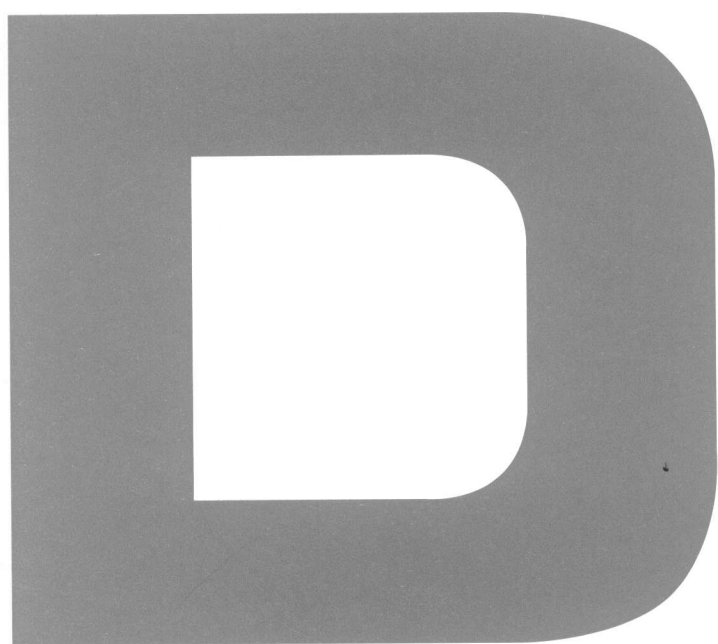
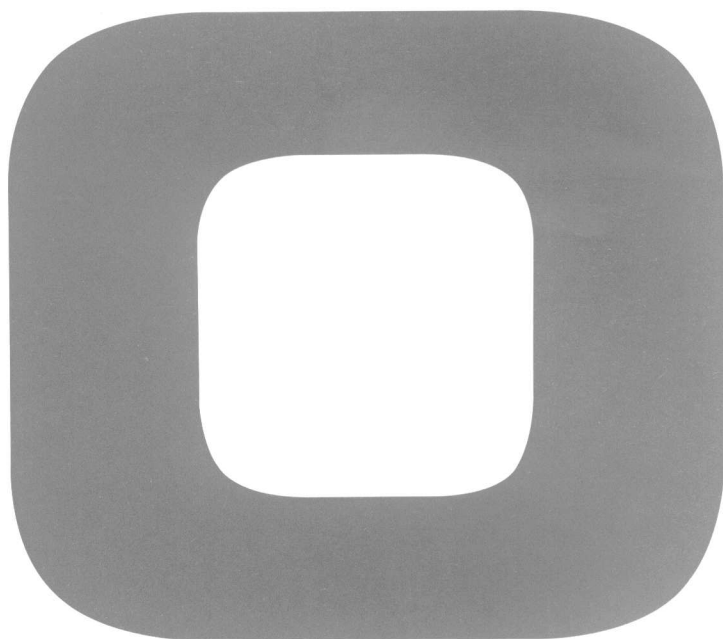


单数 · 双数(上)

韩国 C3 出版公社 编著

华中科技大学出版社

ODD·EVEN



江苏工业学院图书馆
藏书章

单数 · 双数(上)

韩国 C3 出版公社 编著

华中科技大学出版社

ODD·EVEN

图书在版编目 (CIP) 数据

单数·双数(上、下册)/韩国 C3 出版公社 编著

—武汉:华中科技大学出版社,2006年9月

ISBN 7-5609-3852-3

I. 单…

II. 韩…

III. 建筑设计—作品集—韩国

IV. TU206

本套书中文简体字版由香港雷尼国际出版有限公司授权
华中科技大学出版社独家出版

单数·双数(上、下册)

韩国 C3 出版公社 编著

策 划 人: 彭蓉蓉

责任编辑: 刘锦东

责任校对: 朱 霞

封面设计: 王开华

责任监印: 张正林

出版发行: 华中科技大学出版社 武汉武昌喻家山 邮编: 430074

电话: (027) 87557437 87545012

印刷: 恒美印务(番禺南沙)有限公司

制作: 韩国 C3 出版公社

尺寸: 225 × 290mm

印张: 51.75 字数: 1 100 000

版次: 2006年9月第1版

印次: 2006年9月第1次印刷

定价: 598.00元(上、下册)

ISBN 7-5609-3852-3/TU·98

(本书若有印装质量问题, 请向承印厂调换)

First Published September 1, 2006
Published by C3DESIGN

72-9 KongHahng KahngSuh SeuUI 157-812 Korea
Tel. +82 2 2661 2811
Fax. +82 2 2661 2456
<http://www.c3korea.net>

Publisher Jeahong Lee
Editorial Director Uje Lee
Managing Editor JaeWon Lee
Project Editor YoonKyoung Bae, Jun Choi
Editorial Design MinJung Kim, WooRi Kwon
Computer Graphic HyunJung Han
Printed by Dookyoung Printech co.Ltd.

初版 第一次印刷 2006 年 9 月 1 日
发行处 建筑与环境
出版登录 第 13-295 号 (1991 年 5 月 22 日)

地址: 首尔特别市江西区空港洞 72-9 邮编: 157-812
电话: 02 2661 2811
传真: 02 2661 2456
<http://www.c3korea.net>

发行处 李在烘
编辑长 李宇宰
编辑室长 李宰原
编辑企划 裴培京, 崔俊
设计 金珉怔, 权宇理
图表设计 韩贤贞
印刷 株·斗京印刷有限公司

本套书中国语版由韩国 C3 出版公社授权于
香港雷尼国际出版有限公司

All right reserved. No part of this publication may be reproduced, mechanical, photocopying,
recording or otherwise, without the prior permission of C3DESIGN.

这本书的著作权属于建筑与环境社, 没有本社的允许, 不得复印或转载。

Contents

Mirador, Housing in Sanchinarro Mirador 共同住宅	8	MVRDV
Frosilos, Apartment Silo Towers Frosilos 公寓	48	MVRDV
Agbar Tower Agbar 城镇	80	Jean Nouvel
Air Traffic Control Tower at Schwechat Airport 维也纳 Schwechat 国际机场	128	Architekturbüro Zechner & Zechner
Swiss Re Headquarters 瑞士 Re 伦敦本社	160	Foster and Partners
Caltrance District 7 Headquarters Building 卡尔 7 号街总部大楼	192	Morphosis
Netherlands Embassy Berlin 荷兰驻柏林大使馆	232	OMA
Seattle Central Library Seattle 图书馆	272	OMA
Tod's Omotesando Building Tod's Omotesando 大厦	328	Toyo Ito
New Milan Trade Fair 新米兰贸易博览会场	368	Massimiliano Fuksas

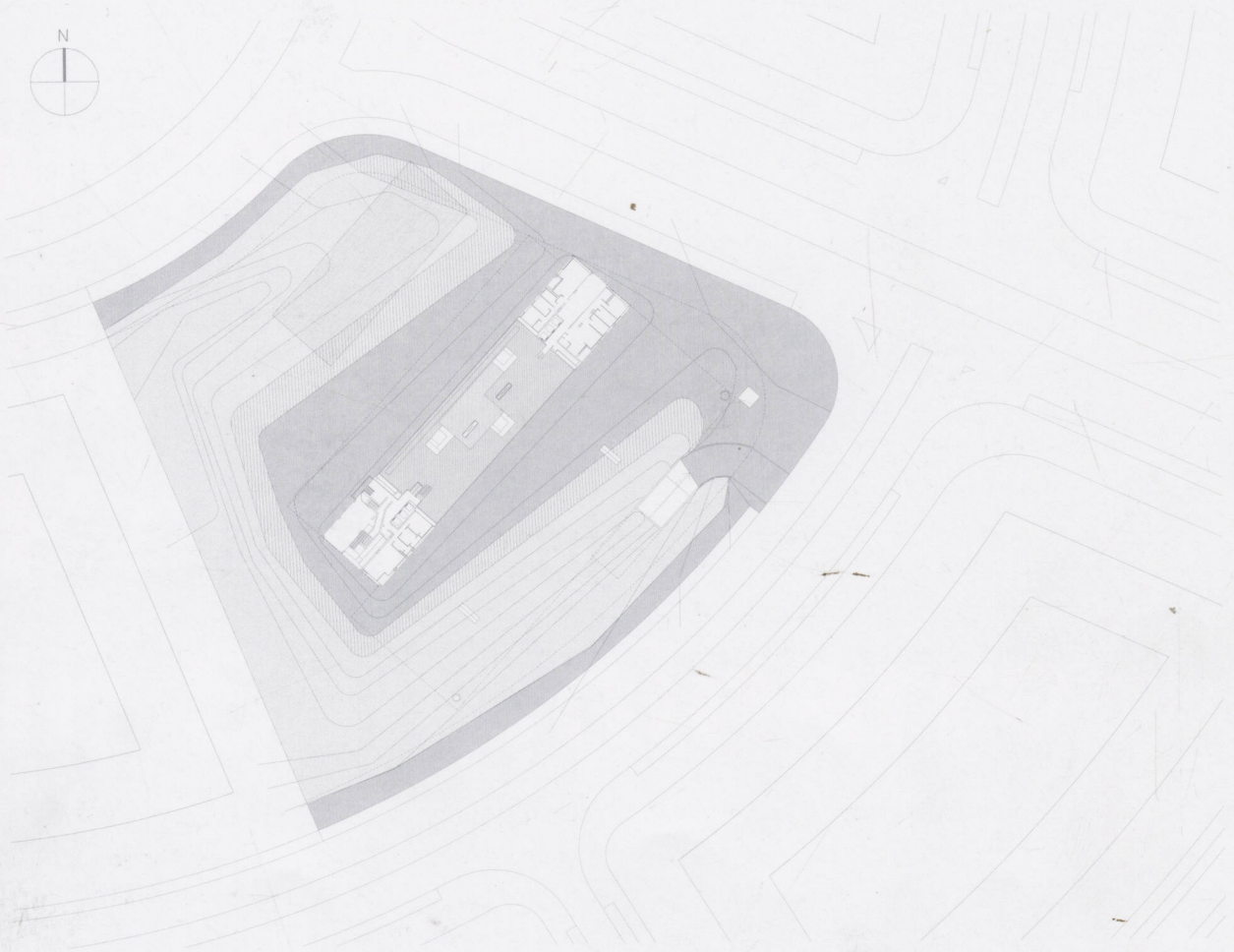
ODD•EVEN

A black and white photograph of a modern residential building with a repetitive pattern of windows and balconies. The building is composed of several interconnected volumes. A large, dark, rectangular void is visible in the center-right of the image, creating a strong contrast with the lighter-colored building facades. The windows are of various sizes and are often grouped together, some with small balconies or external shading devices.

MVRDV

Mirador Housing in Sanchinarro

Mirador 共同住宅



Mirador Housing in Sanchinarro

PAU de Sanchinarro is currently a large empty plain on the north east edge of Madrid. Surrounded by highways, the land will soon become a residential suburb with privileged views towards the Guadarrama Mountains.

To break down the excessive uniformity and claustrophobia of the proposed design that asks for closed blocks of six storey buildings; this apartment volume was developed as a reference point for the city extension and region at large. The 22 level building acts as a frame for the distant landscape and at the same emerges as distinctive within the uniform city of blocks.

The tower opens up public space demanded by the modern city. The large lookout at 40 metres above the ground provides inhabitants and neighbours with a community garden and a space from where they can contemplate the skyline. The proposal opens domestic architecture to the new city environment and to its surrounding territories.

The 16,000m² structure contains a wide variety of compact housing types integrating *different social* groups and lifestyles. In contrast to the serial and rationalist repetition of the standard family unit, the housing units are grouped in small 'buildings'. These 'blocks', stacked and glued together, make up a new towering 'superblock'. The circulations in the building are like small vertical streets. Their transformation along each itinerary agglomerates the compendium of typologies that are structured like small suburbs.

The exterior void measuring 550m² in area and 15m high on the twelfth floor synthesises the diversity and provides the building as a whole and the neighbourhood with a sense of identity. The semi-public sky plaza will be easily accessible with a direct lift connection from the plaza surrounding the building. It will provide the neighbourhood area with an unusual urban capacity.



