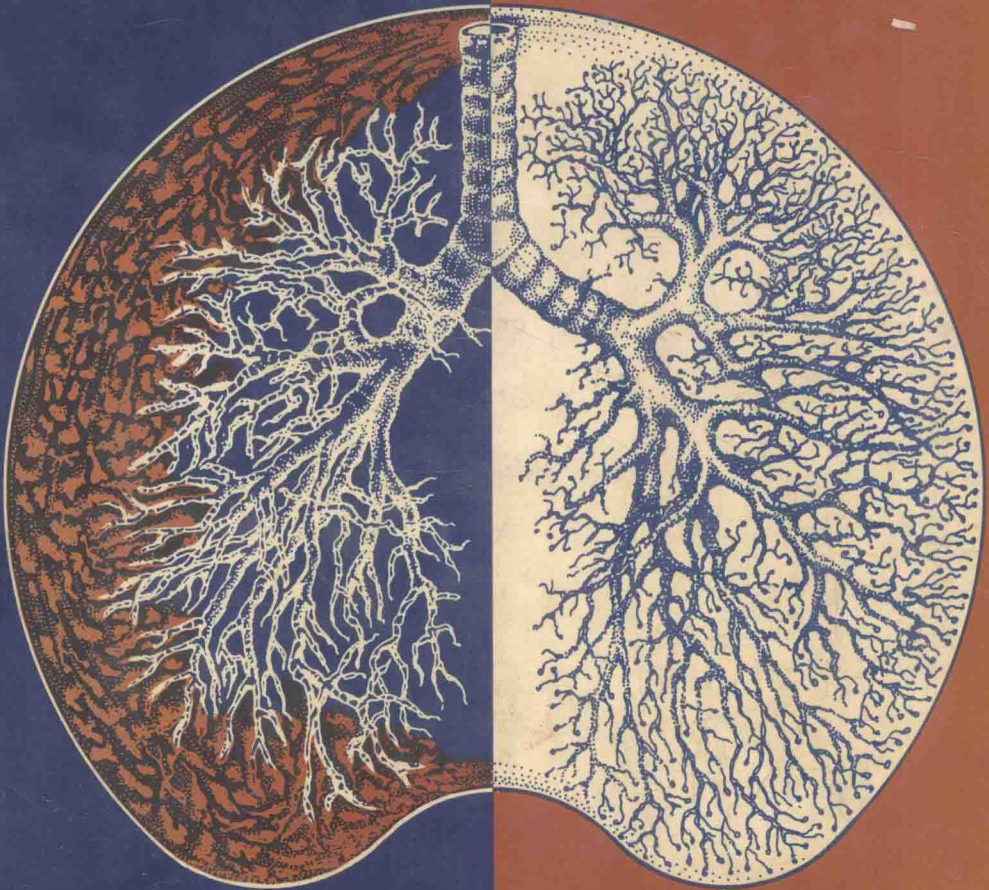


OCCUPATIONAL LUNG DISEASE

*Sponsored by the
American College
of Chest Physicians*

EDITORS

J. Bernard L. Gee
W. Keith C. Morgan
Stuart M. Brooks



RAVEN PRESS

Occupational Lung Disease

Editors

J. Bernard L. Gee, M.D.

*Professor of Medicine
Director, Occupational Lung Disease Clinic
Yale University School of Medicine
New Haven, Connecticut*

W. Keith C. Morgan, M.D.

*Sir Adam Beck Professor of
Pulmonary Disease
University of Western Ontario
London, Ontario, Canada*

Stuart M. Brooks, M.D.

*Professor of Medicine and Environmental Health
Head, Clinical Studies Division
Department of Environmental Health
University of Cincinnati College of Medicine
Cincinnati, Ohio*

*Sponsored by the
American College of
Chest Physicians*

Raven Press ■ New York

Raven Press, 1140 Avenue of the Americas, New York, New York 10036

© 1984 by Raven Press Books, Ltd. All rights reserved. This book is protected by copyright. No part of it may be reproduced, stored in a retrieval system, or transmitted, in any form or by any means, electronic, mechanical, photocopying, recording, or otherwise, without the prior written permission of the publisher.

Made in the United States of America

Library of Congress Cataloging in Publication Data

Main entry under title:

Occupational lung disease.

Proceedings of the International Conference on Occupational Lung Disease, held 3/24-27/82 in Chicago, Illinois.

Includes bibliographical references and index.

1. Lungs—Diseases—Congresses. 2. Occupational diseases—Congresses. I. Gee, J. Bernard L.

II. Morgan, W. Keith C. III. Brooks, Stuart M.

IV. International Conference on Occupational Lung

Disease (1982 : Chicago, Ill.) V. Title. [DNLM:

1. Lung diseases—Congresses. 2. Occupational

diseases—Congresses. WF 600 015 1982]

RC756.0243 1984 616.2'4 82-42583

ISBN 0-89004-900-9

The material contained in this volume was submitted as previously unpublished material, except in the instances in which credit has been given to the source from which some of the illustrative material was derived.

Great care has been taken to maintain the accuracy of the information contained in the volume. However, Raven Press cannot be held responsible for errors or for any consequences arising from the use of the information contained herein.

Materials appearing in this book prepared by individuals as part of their official duties as U.S. Government employees are not covered by the above-mentioned copyright.

OCCUPATIONAL LUNG DISEASE

Preface

Occupational Lung Disease encompasses a broad range of topics from laboratory research to social and legislative policy. The first chapter begins with two aspects fundamental to occupational lung disorders: how inhaled agents are retained in the lung, and basic and applied cellular functions of the lung. In view of the heightened cancer risks in irreversibly exposed workers such as those in industries that utilize asbestos, a timely account is given of the chemoprevention of lung cancer. A subsequent chapter addresses the interrelation between acute and chronic occupational airway disease and discusses the more recently recognized group of febrile disorders associated with humidifiers.

“Epidemiology and the Workplace” discusses epidemiology methods and the application of epidemiologic principles to determine possible work related causes for lung disease. Two later chapters present ideas for practical prevention for coke-oven workers in the steel industry. “The Process of Standard Setting in Environmental Health” describes the principles in setting standards for disease prevention, specifically asbestos and cotton dust.

The last section of the volume is composed of abstracts dealing with recent research in particle clearance and pathogenesis, occupational lung cancer, asbestos-related disorders, occupational airway diseases including byssinosis, disability assessment, and respirator usage.

Occupational Lung Disease will be of interest to those involved in occupational medical practices, including chest physicians, who are often the first to recognize the occupational origin of lung disorders, industrial hygienists, and occupational health nurses.

J. B. L. Gee

Acknowledgments

We wish to thank the editors of Raven Press, particularly Dr. Diana Schneider, for their ready assistance with this volume. We express our appreciation to the authors and to those who made The International Conference on Occupational Lung Disease possible. We thank the staff of the American College of Chest Physicians, notably Dr. Alfred Soffer and Mr. Dale Braddy, the sponsoring organizations, the conference chairmen, members of the organizing committee, and others who served as session chairpersons. We are particularly grateful to those industrial and research concerns that provided educational grants. Finally, I wish to express my personal appreciation to Mrs. Margaret Chase for her superb organizational and secretarial assistance.

The International Conference on Occupational Lung Disease held in Chicago, Illinois, April 1982, was sponsored by: American College of Chest Physicians, American Academy of Occupational Medicine, American Occupational Medical Association, Canadian Council of Occupational Medicine Association, and Canadian Thoracic Society.

The American College of Chest Physicians appreciates the support of the following companies and associations for their help in making the conference possible: ALCOA Foundation, Asbestos Information Association, Brush Wellman, Burlington Industries Foundation, Cabot Berylco, Inc., Erich Jaeger Inc., Exxon Corporation, Ford Motor Company Fund, Gould Inc., Medical Products Division, Gulf Oil Corporation, Jones Medical Instrument Co., National Cotton Council of America, National Institute of Occupational Safety & Health, Olin Corporation, Olin Ski Company, Inc., Phillips Petroleum Foundation, Inc., and Rockwell International.

Contributors

D. Ahmad, M.D.

*Associate Professor of Medicine
University of Western Ontario
London, Ontario, Canada N6A 5A5*

J. R. G. Almeida, M.D.

*Resident of Pneumology
University Hospital
3049 Coimbra Codex, Portugal*

E. B. Altekruuse, M.D.

*Assistant Professor
Director, Occupational Health
Program
Department of Family Practice
Medical College of Georgia
Augusta, Georgia 30912*

Rochelle Althouse, B.Sc.

*National Institute for Occupational
Safety and Health
Morgantown, West Virginia 26505*

J. Andresen, M.D.

*Department of Radiology
County Hospital
Aarhus University
DK-8000 Aarhus, Denmark*

P. K. C. Austwick

*Aerobiology Unit
Brompton Hospital
Frimley, England*

Manuel F. Baganha, M.D., FCCP

*Clinic of Pneumology
Faculty of Medicine and University
Hospital
3049 Coimbra Codex, Portugal*

V. F. Bairos, M.D.

*Assistant of Histology and
Embryology
Faculty of Medicine
3049 Coimbra Codex, Portugal*

D. Baker, M.D., M.P.H.

*National Institute for Occupational
Safety and Health
New York, New York 10278*

J. R. Balmes, M.D.

*Assistant Professor of Medicine
University of Southern California
Medical School
Los Angeles, California 90033*

K. Bang, M.S., Ph.D.

*Research Associate
Rocky Mountain Center for
Occupational and Environmental
Health
University of Utah
Salt Lake City, Utah 84112*

Daniel E. Banks, M.D.

*Tulane University School of
Medicine
New Orleans, Louisiana 70112*

Melvin Barber, B.S.

*Senior Research Associate
Department of Environmental
Health and Medicine
University of Cincinnati
Cincinnati, Ohio 45267*

D. G. Barnett, M.D.

*Director of Medical Services and
General Superintendent
Saskatchewan Anti-Tuberculosis
League
Fort San, Saskatchewan,
Canada S0G 1T0*

S. Bar-Sela, M.D.

*Chief, Allergy Unit
Hadassah Hospital
91010 Jerusalem, Israel*

J. P. Bastos

*Engineer
Companhia Portuguesa de Fornos
Eléctricos
Canas de Senhorim
3520 Nelas, Portugal*

Michael A. Bauer, M.D.

*The National Institute for
Occupational Safety and Health
Morgantown, West Virginia 26505*

G. L. Baum, M.D.

*Director, Respiratory Disease
Division
Sheba Medical Center
Tel Hashomer, Israel*

G. J. Beck, Ph.D.

*Associate Professor, Biostatistics
Department of Epidemiology and
Public Health
Yale University School of Medicine
New Haven, Connecticut 06510*

Margaret R. Becklake, M.D.

*Department of Epidemiology and
Health
Royal Victoria Hospital
McGill University
Montreal, Quebec, H3A 2B4 Canada*

R. Bégin, M.D.

*Unite de Recherche Pulmonaire
Universite de Sherbrooke
Sherbrooke, Quebec, Canada J1H 5N4*

R. A. Bernarda, M.D.

*Professor of General Pathology
Department of General Pathology
Faculty of Medicine
3049 Coimbra Codex, Portugal*

I. L. Bernstein, M.D.

*Department of Medicine
University of Cincinnati Medical
Center
Cincinnati, Ohio 45267*

Praful Bhansali, Ph.D.

*Former Postdoctorate Fellow,
Bioengineering
University of Wisconsin
Madison, Wisconsin 53792*

Amit Bhattacharya, Ph.D.

*Assistant Professor of
Environmental Health
Department of Environmental
Health and Medicine
University of Cincinnati College of
Medicine
Cincinnati, Ohio 45267*

J. Bignon, M.D.

*Professor of Medicine
Clinique de Pathologie Respiratoire
et Environnement (INSERM U
139 et ERA CNRS No. 845)
Centre Hospitalier Intercommunal
40 Avenue de Verdum
94010 Créteil Cedex, France*

M. Bictor, M.D.

*Unite de Recherche Pulmonaire
Universite de Sherbrooke
Sherbrooke, Quebec, Canada J1H 5N4*

B. Boehlecke, M.D.

*Research Associate Professor of
Medicine
University of North Carolina
Chapel Hill, North Carolina 27514*

L. Bolvig, M.D.

*Department of Radiology
County Hospital
Aarhus University
DK-8000 Aarhus, Denmark*

F. Boudewyns

*Directeur du Department de
Statistiques
Fonds des Maladies
Professionnelles
1070 Brussels, Belgium*

C. Boutin, M.D.

*Professeur of Pneumology
School of Medicine
University of Marseilles
Hopital Michel Levy
13006 Marseilles, France*

C. Bragg, M.S.

*Research Leader
Cotton Quality Research Station,
USDA, ARS
Clemson, South Carolina 29632*

P. Braun, M.D.

*Service de Pneumologie
Hôpital Maillot
54250 Briey, France*

Edward Bresnick, Ph.D.

*Chairman, Department of
Biochemistry
University of Vermont
College of Medicine
Burlington, Vermont 05405*

I. Broder, M.D. FRCP(C)

*Director
The Gage Research Institute
Toronto, Canada M5T 1R4*

A. R. Brody, Ph.D.

*Head, Pulmonary Pathology
Laboratory
National Institute of Environmental
Health Sciences
Research Triangle Park,
North Carolina 27709*

Stuart M. Brooks, M.D., FCCP

*Professor of Medicine and
Environmental Health
Clinical Studies Division
University of Cincinnati College of
Medicine
Cincinnati, Ohio 45267*

Harvey Brown, M.D.

*Assistant Professor of Medicine
Division of Pulmonary Medicine
Cedars-Sinai Medical Center
UCLA School of Medicine
Los Angeles, California 90048*

Marion G. Buck, Ph.D.

*Research Associate
Department of Internal Medicine
Yale University School of Medicine
333 Cedar Street
New Haven, Connecticut 06510*

Patricia A. Buffler, Ph.D.,

M.P.H.

*Associate Professor of
Epidemiology and Associate
Dean for Research
Epidemiology Research Unit
School of Public Health
The University of Texas Health
Science Center at Houston
Houston, Texas 77025*

Merle Bundy, M.D.

*Director, Industrial Medicine
United States Steel Corporation
Pittsburgh, Pennsylvania 15230*

M. A. Bureau, M.D.

*Unite de Recherche Pulmonaire
Universite de Sherbrooke
Sherbrooke, Quebec, Canada J1H 5N4*

Robert Burrell, M.D.

*Professor, Department of
Microbiology
West Virginia University School of
Medicine
Morgantown, West Virginia 26505*

Brian T. Butcher, Ph.D.

*Associate Professor of Medicine
Clinical Immunology Section
Tulane University Medical Center
1700 Perdido Street
New Orleans, Louisiana 70112*

D. Campbell, M.D.

*Occupational Medicine Resident
Rocky Mountain Center for
Occupational and Environmental
Health
University of Utah
Salt Lake City, Utah 84112*

A. Cantin, M.D.

*Unite de Recherche Pulmonaire
Universite de Sherbrooke
Sherbrooke, Quebec, Canada J1H 5N4*

Mark L. Carlson, M.D.

*Division of Respiratory Disease
Studies
National Institute for Occupational
Safety and Health
Morgantown, West Virginia 26505*

K. Casey, M.D.

*Assistant Professor of Medicine
Rocky Mountain Center for
Occupational and Environmental
Health
University of Utah
Salt Lake City, Utah 84112*

Robert M. Castellan, M.D.
Medical Officer
National Institute for Occupational
Safety and Health
Morgantown, West Virginia 26505

M. J. Chamberlain, M.D.
Professor of Medicine and
Radiology
University of Western Ontario
London, Ontario, Canada N6A 5A5

R. I. Chamberlin
Acting Director of Environmental
Medicine Services
Industrial Hygiene Officer
Massachusetts Institute of
Technology
Cambridge, Massachusetts 02139

B. A. Chaudhary, M.D., FACP,
FCCP
Assistant Professor
Director, Pulmonary Diagnostic
Procedures
Department of Medicine, Section of
Pulmonary Diseases
Medical College of Georgia
Augusta, Georgia 30912

W. Cibulus, Jr., M.S.
Department of Environmental
Health
Clinical Studies Division
University of Cincinnati Medical
Center
Cincinnati, Ohio 45267

Howell W. Clague, M.D.
Research Fellow, Department of
Medicine
University of Western Ontario
London, Ontario, Canada N6A 5A5

Scott Clark, Ph.D.
Associate Professor of
Environmental Health
Institute of Environmental Health
University of Cincinnati
Cincinnati, Ohio 45267

J. Cocke, BSA, BSAE
Agricultural Engineer
Cotton Quality Research Station,
USDA, ARS
Clemson, South Carolina 29632

P. Corey, M.A., Ph.D.
The Gage Research Institute
Toronto, Canada M5T 1R4

Morton Corn, Ph.D.
Professor and Director, Division of
Environmental Health
Engineering
School of Hygiene and Public
Health
Johns Hopkins University
Baltimore, Maryland 21205

D. J. Cotton, M.D., FRCP(C)
Associate Professor of Medicine
Department of Medicine
University of Saskatchewan College
of Medicine
Saskatoon, Saskatchewan,
Canada S7N 0X0

A. Coutté, M.D.
Department of Radiology
County Hospital
Aarhus University
DK-8000 Aarhus, Denmark

I. I. Coutts, M.B., MRCP
Senior Medical Registrar
Frenchay Hospital
Bristol BS16 1LE, England

John E. Craighead, M.D.
Chairman, Department of
Pathology
University of Vermont College of
Medicine
Burlington, Vermont 05405

M. R. Cullen, M.D.
Assistant Professor of Medicine
Yale Occupational Medicine
Program
Yale University School of Medicine
New Haven, Connecticut 06510

R. P. Daniele, M.D.

*Associate Professor of Medicine
and Pathology
Cardiovascular-Pulmonary Division
University of Pennsylvania
Philadelphia, Pennsylvania 19104*

J. H. Dauber, M.D.

*Chief, Pulmonary Service
Oakland VA Medical Center
Pittsburgh, Pennsylvania 15240*

Geoffrey Davies, M.D., FRCP(C)

*Associate Professor, Department of
Medicine
University of Toronto
Sunnybrook Medical Centre
Toronto, Canada M4N 3M5*

P. S. Davies

*Aerobiology Unit
Brompton Hospital
Frimley, England*

G. S. Davis, M.D.

*Associate Professor, Department of
Medicine
College of Medicine
University of Vermont
Burlington, Vermont 05405*

A. Delaude

*Professeur de Clinique de
Pneumo-Physiologie
Hôpital Purpan
31059 Toulouse, France*

E. Del Bono

*Research Associate
Pulmonary Service
Falkner Hospital
Boston, Massachusetts 02130*

Jerome Dempsey, Ph.D.

*Professor of Medicine
Department of Preventive Medicine
University of Wisconsin
Madison, Wisconsin 53792*

Paul De Vuyst, M.D.

*Service de Pneumologie
Hôpital Erasme
Université Libre de Bruxelles
1070 Brussels, Belgium*

John E. Diem, Ph.D.

*Professor of Statistics
Department of Mathematics
Tulane University School of
Medicine
1700 Perdido Street
New Orleans, Louisiana 70112*

Ronald F. Dodson, Ph.D., FCCP

*Chief, Department of Cell Biology
and Environmental Sciences
The University of Texas Health
Center
Tyler, Texas 75710*

Guillermo A. doPico, M.D.

*Professor of Medicine
Department of Medicine,
Pulmonary Section
University of Wisconsin
Madison, Wisconsin 53792*

J. A. Dosman, M.D., FRCP(C)

*Ferguson Associate Professor of
Respiratory Diseases
Department of Medicine
University of Saskatchewan College
of Medicine
Saskatoon, Saskatchewan,
Canada S7N 0X0*

C. A. Doyle, M.P.H.

*Department of Epidemiology and
Public Health
Yale University School of Medicine
60 College Street
New Haven, Connecticut 06510*

Gervais Drapeau, M.D.

*Unité de Recherche Pulmonaire
Université de Sherbrooke
Sherbrooke, Quebec, Canada J1H 5N4*

Gilles Drapeau, M.Sc.

*Unité de Recherche Pulmonaire
Université de Sherbrooke
Sherbrooke, Quebec, Canada J1H 5N4*

A. Eastman, Ph.D.

*Research Assistant Professor
Department of Biochemistry
University of Vermont College of
Medicine
Burlington, Vermont 05405*

J. A. Elias, M.D.

*Assistant Professor of Medicine
Cardiovascular-Pulmonary Division
University of Pennsylvania
Philadelphia, Pennsylvania 19104*

Jane Emory, B.S., M.S.

*Industrial Hygienist
Departments of Environmental
Health and Medicine
University of Cincinnati College of
Medicine
Cincinnati, Ohio 45267*

Alan Engelberg, M.D.

*Division of Respiratory Disease
Studies
National Institute for Occupational
Safety and Health
944 Chestnut Ridge Road
Morgantown, West Virginia 26505*

G. Epler, M.D.

*Assistant Professor of Medicine
Boston University School of
Medicine
Boston, Massachusetts 02118*

Paul E. Epstein, M.D.

*Clinical Associate Professor of
Medicine
University of Pennsylvania
Philadelphia, Pennsylvania 19104*

J. H. Evans, Ph.D.

*Assistant Professor
Department of Physiology
College of Medicine
University of Vermont
Burlington, Vermont 05405*

Leonardo M. Fabbri, M.D.

*Visiting Assistant Professor of
Medicine
Pulmonary Diseases Section
Tulane University School of
Medicine
1700 Perdido Street
New Orleans, Louisiana 70112*

P. Fernet

*Chef de travaux
Informatique, Statistique et
Méthodologie Épidémiologique
Hôtel Dieu
31052 Toulouse, France*

Murray M. Finkelstein, M.D.,

Ph.D., C.M.
*Ontario Ministry of Labour
400 University Avenue, 8th Floor
Toronto, Ontario, Canada M7A 1T7*

Allan P. Freedman, M.D.

*Associate Professor
Division of Pulmonary Diseases
Department of Medicine
The Hahnemann Medical College
Philadelphia, Pennsylvania 19102*

F. Froh

*Executive Director
Saskatchewan Anti-Tuberculosis
League
Fort San, Saskatchewan,
Canada S0G 1T0*

M. Gabiano, M.D.

*Medecin du Travail
SACILOR
57700 Hayange, France*

E. Gaensler, M.D.

*Professor of Surgery and
Physiology
Boston University School of Medicine
Boston, Massachusetts 02118*

M. Gaertner, M.D.

*INSERM U 14
Physiopathologie Respiratoire
Case Officielle No. 10
54511 Vandoeuvre-Les-Nancy
Cedex, France*

J. S. Gallagher, Ph.D.

*Department of Medicine
University of Cincinnati Medical
Center
Cincinnati, Ohio 45267*

P. Gann, M.D.

*Chief, Occupational Medicine
New Jersey Department of Health
Trenton, New Jersey 08625*

M. F. Garcao

*Investigator
Department of Immunology
Faculty of Medicine
3049 Coimbra Codex, Portugal*

E. Gaspar

*Investigator
Institute of General Pathology
Faculty of Medicine
3049 Coimbra Codex, Portugal*

J. Bernard L. Gee, M.D.

*Professor of Medicine
Director, Occupational Lung
Disease Clinic
Yale University School of Medicine
New Haven, Connecticut 06510*

Henry W. Glindmeyer, D.Eng.

*Associate Professor of Medicine
Department of Medicine,
Pulmonary Diseases Section
Tulane University School of
Medicine
1700 Perdido Street
New Orleans, Louisiana 70112*

B. L. Graham, Ph.D., P.Eng.

*Associate Professor of Medicine
Department of Medicine
University of Saskatchewan College
of Medicine
Saskatoon, Saskatchewan,
Canada S7N 0X0*

W. Greaves, M.D., MSCM

*Assistant Professor
Department of Preventive Medicine
The Medical College of Wisconsin
Milwaukee, Wisconsin 53226*

Francis H. Y. Green, M.D.

*National Institute for Occupational
Safety and Health, DRDS
944 Chestnut Ridge Road
Morgantown, West Virginia 26505*

C. Groetenbriel

*Conseiller Medical
Fonds des Maladies Professionnelles
1070 Brussels, Belgium*

Per Haglind, M.D.

*Department of Environmental
Hygiene
University of Gothenburg
S-400 33 Gothenburg, Sweden*

C. A. Hales, M.D.

*Assistant Physician
Massachusetts General Hospital
Cambridge, Massachusetts 02114*

Yehia Y. Hammad, D.Sc.

*Associate Professor of Medicine
Department of Medicine
Tulane University School of
Medicine
1700 Perdido Street
New Orleans, Louisiana 70112*

John Hancock

*Division of Respiratory Disease
Studies
National Institute for Occupational
Safety and Health
944 Chestnut Ridge Road
Morgantown, West Virginia 26505*

Philip Harber, M.D., M.P.H.

*Assistant Professor of Medicine
Chief, Occupational Medicine
Branch
Department of Medicine, Center for
the Health Sciences
University of California, Los Angeles
Los Angeles, California 90024*

David J. Hendrick, M.D.

*Chest Clinic
Newcastle General Hospital
Westgate Road
Newcastle-upon-Tyne,
NE4 6BE, England*

L. H. Hill, B.S.

*Pulmonary Pathology Group
Laboratory of Pulmonary Function
and Toxicology
National Institute of Environmental
Health Sciences
Research Triangle Park,
North Carolina 27709*

Judith E. Ho, M.D.

*Director, Nuclear Medicine
Laboratory
St. Louis University School of
Medicine
St. Louis, Missouri 63104*

S. Holford, D.Sc.

*Senior Applications Consultant
Masscomp
Acton, Massachusetts 01720*

V. Holford-Strevens, Ph.D.

*Professional Assistant
Department of Immunology
University of Manitoba
Winnipeg, Manitoba, Canada R3E 0V8*

Patrick Holt, M.D.

*Clinical Immunology Research Unit
Princess Margaret Hospital for
Children
Perth, Western Australia 6001*

Michael Holthouser, M.D.

*Occupational Medicine Resident
Rocky Mountain Center for
Occupational and Environmental
Health
University of Utah
Salt Lake City, Utah 84112*

N. Horsfield

*Chest Clinic
Wythenshawe Hospital
Manchester M23 9LT, England*

Jon Howard, M.D.

*Division of Pulmonary Medicine
Cedars-Sinai Medical Center
UCLA School of Medicine
Los Angeles, California 90048*

H. Stephen Huber, Ph.D.

*Senior Instructor
Department of Medicine
Division of Pulmonary Diseases
Hahnemann Medical College
Philadelphia, Pennsylvania 19102*

Janet M. Hughes, Ph.D.

*Assistant Professor of Biostatistics
Department of Biostatistics and
Epidemiology
Tulane University School of Public
Health and Tropical Medicine
1700 Perdido Street
New Orleans, Louisiana 70112*

J. Fintan Hurley, BA(I), MA(I)

*Statistics Branch
Institute of Occupational Medicine
8 Roxburgh Place
Edinburgh EH8 9SU, Scotland*

George A. Hurst, M.D., FCCP

*Director, Department of Cell
Biology and Environmental
Sciences
University of Texas Health Center
Tyler, Texas 75710*

Michael Hutcheon, M.D.,

FRCP(C)
*Assistant Professor
Department of Medicine
University of Toronto
The Wellesley Hospital
Toronto, Ontario, Canada M4Y 1J3*

M. S. Huuskonen, M.D., M.Sc.

*Institute of Occupational Health
SF-00290 Helsinki 29, Finland*

X. Janson

*Laboratoire d'Etude des Particules
Inhales
75013 Paris, France*

A. M. Jarabek, B.S.

*Department of Environmental
Health
Clinical Studies Division
University of Cincinnati Medical
Center
Cincinnati, Ohio 45267*

M. C. Jaurand, Ph.D.

*Unité de Recherches sur la
Biopathologie Renale et
Pulmonaire (INSERM U 139)
CHU Henri Mondor
94010 Créteil Cedex, France*

Jacques Jedwab, D.Sc.

*Professor, Laboratoire de
Géochimie CP 160
Université Libre de Bruxelles
1070 Brussels, Belgium*

Robert N. Jones, M.D.

*Associate Professor of Medicine
Department of Medicine, Section of
Pulmonary Diseases
Tulane University School of
Medicine
1700 Perdido Street
New Orleans, Louisiana 70112*

W. Jones Williams, M.D.,

FRCP, FRCPath.
Department of Pathology
Llandough Hospital
Penarth, South Glamorgan
CF6 1XX, United Kingdom

J. A. Julian, M.M.

Research Statistician
Occupational Health Program
Faculty of Health Sciences
McMaster University
Hamilton, Ontario, Canada L8N 3Z5

B. Kanceljak, M.D.

Assistant Professor of Internal
Medicine
J. Kajfes Hospital
41000 Zagreb, Yugoslavia

H. Kazemi, M.D.

Professor of Medicine
Harvard Medical School
Boston, Massachusetts 02114

Spencer Koerner, M.D.

Professor of Medicine
Division of Pulmonary Medicine
Cedars-Sinai Medical Center
UCLA School of Medicine
Los Angeles, California 90048

K. Korhonen, M.Sc.

Institute of Occupational Health
SF-00290 Helsinki 29, Finland

O. Korhonen, M.D.

Institute of Occupational Health
SF-00290 Helsinki 29, Finland

H. Koskinen, M.D.

Institute of Occupational Health
SF-00290 Helsinki 29, Finland

T. J. Kuwahara, B.S.

Department of Pathology
University of California
San Francisco, California 94143

C. Lambre, Ph.D.

Unite de Recherches sur la
Biopathologie Renale et
Pulmonaire (INSERM U 139)
CHU Henri Mondor
94101 Creteil Cedex, France

G. Lamoureux, M.D.

Unite de Recherche Pulmonaire
Universite de Sherbrooke
Sherbrooke, Quebec,
Canada J1H 5N4

J. M. Landesman, M.S.

Research Assistant
Department of Pathology
University of Vermont
College of Medicine
Burlington, Vermont 05405

Suzanne R. Larson, M.P.H.

Projects Manager
Environmental Health Associates, Inc.
Berkeley, California 94704

Samuel B. Lehrer, Ph.D.

Associate Professor of Medicine
Clinical Immunology Section
Tulane University School of
Medicine
1700 Perdido Street
New Orleans, Louisiana 70112

Mary L. Lerchen

Department of Medicine and New
Mexico Tumor Registry
University of New Mexico Medical
Center
Albuquerque, New Mexico 87131

S. Le Maho, M.D.

Clinique Respiratoire et
Environnement (INSERM U 139 et
ERA CNRS No. 845)
Centre Hospitalier Intercommunal
40 Avenue de Verdum
94010 Créteil Cedex, France

I. Lemaire, Ph.D.

Unite de Recherche Pulmonaire
Universite de Sherbrooke
Sherbrooke, Quebec, Canada J1H 5N4

P. Leophonte, M.D.

Professeur agrege de Pneumo-
Phtisiologie
Clinique de Pneumo-Phtisiologie
Hôpital Purpan
31059 Toulouse, France

Mary L. Lerchen, M.S.
Assistant Scientist
New Mexico Tumor Registry
University of New Mexico Medical
Center
Albuquerque, New Mexico 87131

Hilton C. Lewinsohn, M.D.
Lecturer in Epidemiology
Yale School of Epidemiology and
Public Health
New Haven, Connecticut 06510

Arthur Leznoff, M.D., FRCP(C)
Associate Professor, Department of
Medicine
University of Toronto
St. Michael's Hospital Annex
Toronto, Canada M5B 1A6

K.-Y. R. Li
Biostatistician
Department of Medicine
University of Saskatchewan College
of Medicine
Saskatoon, Saskatchewan,
Canada S7N 0X0

M. A. M. Lima, M.D.
Investigator
Department of Immunology
Faculty of Medicine
3049 Coimbra Codex, Portugal

A. J. S. Luis, M.D.
Intern of Pneumology
University Hospital
3049 Coimbra Codex, Portugal

I. Lutsky, V.M.D.
Chairman, Department of
Comparative Medicine
Hebrew University School of
Medicine
91010 Jerusalem, Israel

J. Manfreda, M.D.
Associate Professor of Medicine
Department of Medicine
University of Manitoba
Winnipeg, Manitoba, Canada R3E 0V8

Cristina Mapp, M.D.
Istituto di Medicina del Lavoro
Universita degli studi di Padova
35100 Padova, Italy

Thomas Mason, Ph.D.
Head, Populations Study Section
Environmental Epidemiology Branch
National Cancer Institute
Bethesda, Maryland 20205

R. Masse, V.D.
Laboratoire de Toxicologie
Expérimentale
BP 561
Commissariat à l'Energie Atomique
92542 Montrouge Cedex, France

S. Massé, M.D.
Unité de Recherche Pulmonaire
Université de Sherbrooke
Sherbrooke, Quebec, Canada J1H 5N4

L. R. Maunder, M.A.
Assistant in Research
Department of Medicine,
Pulmonary Section
Yale University School of Medicine
New Haven, Connecticut 06510

A. Mazar, M.D.
Respiratory Disease Division
Sheba Medical Center
Tel Hashomer, Israel

J. Corbett McDonald, M.D.
Professor of Epidemiology
School of Occupational Health
McGill University
3775 University Street
Montreal, Quebec, Canada H3G1Y

J. Wister Meigs, M.D.
Clinical Professor of Epidemiology
Connecticut Cancer Epidemiology
Unit
Yale School of Epidemiology and
Public Health
New Haven, Connecticut 06510

James A. Merchant, M.D.,
Dr.P.H.
College of Medicine
University of Iowa
Iowa City, Iowa 52242

S. Mintz, M.D., FRCP(C)
Associate Professor, Department of
Medicine
University of Toronto
Women's College Hospital
Toronto, Canada M5S 1B2

Zab Mohsenifar, M.D.

*Assistant Professor of Medicine
Division of Pulmonary Medicine
Cedars-Sinai Medical Center
UCLA School of Medicine
Los Angeles, California 90048*

Robert W. Morgan, M.D.

*Senior Vice President
Environmental Health Associates,
Inc.
Berkeley, California 94704*

W. K. C. Morgan, M.D.,

*FRCP(Ed), FRCP(C), FACP
Director, Chest Disease Service
Chest Disease Unit
University Hospital
London, Ontario, Canada N6A 5A5*

B. T. Mossman, Ph.D.

*Assistant Professor, Department of
Pathology
University of Vermont College of
Medicine
Burlington, Vermont 05405*

D. C. F. Muir, M.D., Ph.D.

*Director, Occupational Health
Program
Professor of Medicine, Faculty of
Health Sciences
McMaster University
Hamilton, Ontario, Canada L8N 3Z5*

J. Mull, M.S.

*Medical Technologist
National Institute for Occupational
Safety and Health
Morgantown, West Virginia 26504*

A. Muñoz, Ph.D.

*Instructor in Medicine
Harvard Medical School
Boston, Massachusetts 02115*

J. M. Mur, M.D.

*Institut National de Recherche sur
la Sécurité du Travail (INRS)
54511 Vandoeuvre-Les-Nancy
Cedex, France*

R. Murphy, Jr., M.D.

*Director, Pulmonary Service
Faulkner Hospital
Boston, Massachusetts 02130*

D. Nadeau, Ph.D.

*Unité de Recherche Pulmonaire
Université de Sherbrooke
Sherbrooke, Quebec, Canada J1H 5N4*

J. Nickels, M.D.

*Institute of Occupational Health
SF-00290 Helsinki 29, Finland*

Henrik Nordman, M.D.

*Institute of Occupational Health
Haartmaninkatu
SF 00290 Helsinki 29, Finland*

Mary-Win O'Brien

*Assistant General Counsel
United Steel Workers of America
Pittsburgh, Pennsylvania 15222*

P. D. Oldham, M.A., D.Sc.

*MRC Pneumoconiosis Unit
Llandough Hospital
Penarth, South Glamorgan
CF6 1XW, United Kingdom*

S. A. Olenchok, Ph.D.

*Chief, Immunology Section
National Institute for Occupational
Safety and Health
Morgantown, West Virginia 26505*

M. Oliveira, M.D.

*Associate Professor of Surgery
Department of Cardiothoracic
Surgery
University School
3049 Coimbra Codex, Portugal*

Carol E. O'Neil, Ph.D.

*Medical Research Specialist
Clinical Immunology Section
Tulane University Medical Center
1700 Perdido Street
New Orleans, Louisiana 70112*

Carl Ortmeier, Ph.D.

*National Institute for Occupational
Safety and Health, DRDS
944 Chestnut Ridge Road
Morgantown, West Virginia 26505*

Michael O'Sullivan, B.S.

*Department of Cell Biology and
Environmental Sciences
The University of Texas Health
Center
Tyler, Texas 75710*