

邵连顺 胡朗 编著

# 展示结构包装 Out of the box

READY-TO-USE DISPLAY PACKAGING

辽宁科学技术出版社

TB482/18

2007

邵连顺 胡 朗 编著


# 展示结构包装

# Out of the box

**READY-TO-USE**

DISPLAY PACKAGING

辽宁科学技术出版社



图书在版编目(CIP)数据

展示结构包装 / 邵连顺, 胡朗编著. — 沈阳: 辽宁科学技术出版社, 2007. 6

ISBN 978-7-5381-5121-3

I. 展… II. ①邵…②胡… III. 包装容器 — 包装纸板 — 结构设计 IV. TB482.2

中国版本图书馆CIP数据核字(2007)第083612号

---

出版发行: 辽宁科学技术出版社

(地址: 沈阳市和平区十一纬路25号 邮编: 110003)

印刷者: 利丰雅高印刷(深圳)有限公司

经销者: 各地新华书店

幅面尺寸: 180mm × 180mm

印 张: 12.75

插 页: 4

字 数: 50千字

印 数: 1~3000

出版时间: 2007年6月第1版

印刷时间: 2007年6月第1次印刷

责任编辑: 陈慈良

封面设计: 王季霞

版式设计: 邵连顺

责任校对: 东戈

---

定 价: 68.00元

联系电话: 024-23284360

邮购热线: 024-23284502

E-mail: lkzsb@mail.lnpgc.com.cn

Http://www.lnkj.com.cn

简介	Introduction	004
国际标准	International standards	006
相关术语	Terms	006
锁扣方法	Locking Methods	008
基本盒形	Basic Structures	010
设计	Designs	012 - 349
悬挂式展示盒	Hanging Displays	012
陈列式展示盒	Presentation Displays	052
展示托盘	Display Trays	104
展示方盒	Display Boxes	168
窗口式展示盒	Window Display	218
框架式展示盒	Easel Display	280
特殊形式展示盒	Special Style	310
索引	Index	350

# Contents 目录

任何一种包装设计都要考虑到规格、材料和使用材料的厚度，以及是否适合产品的尺寸、重量和种类。其他技术，如画线或折痕，会进一步增强包装的坚固性，应该予以考虑，以确保结构包装设计的成功。

# Introduction 简介

The design of any package should involve decisions on the dimensions, material, and the thickness of the material used, and whether these are appropriate for the size, weight and nature of the product. Other techniques such as scoring or creasing will further increase the strength of the packaging, and these should be taken into consideration to ensure the success of any structural packaging design.

## International standards 国际标准

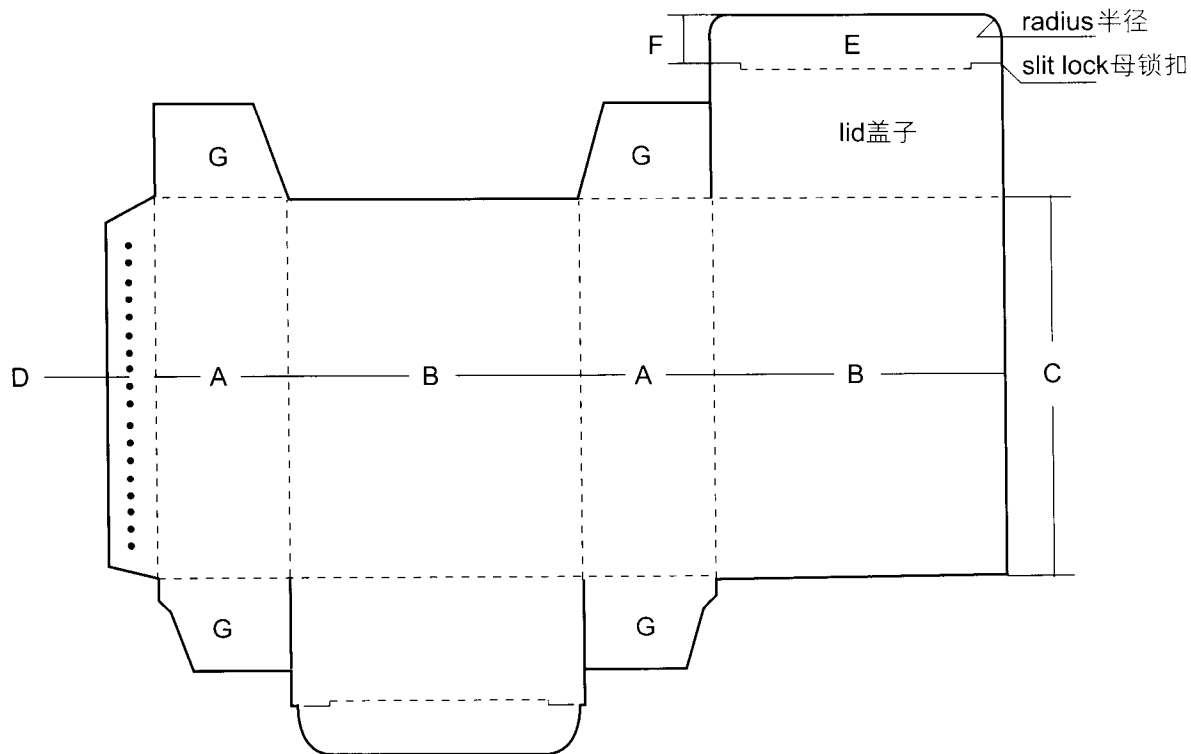
A.L = 长度                      A.L = Length of Box

B.W = 宽度                      B.W = Width of Box

C.D = 深度                      C.D = Depth of Box

## Terms 相关术语

A		Generic Joint	一般折合线
B		Slide Fastener Cutting	拉链式齿刀线
C		Folding Machine Line	机折线
D		Glue Flap	糊头



A.L = 长度

B.W = 宽度

C.D = 深度

D 糊头

E 插头

F 肩

G 防护翼

A.L = Length

B.W = Width

C.D = Depth

D Glue Flap

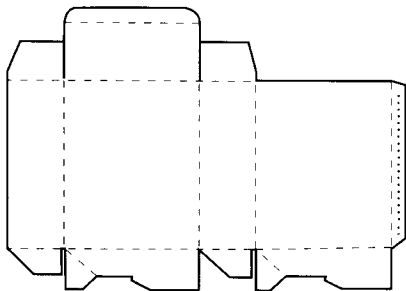
E Tuck

F Shoulder

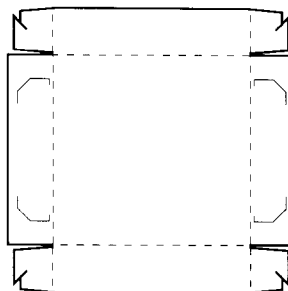
G Dust flap



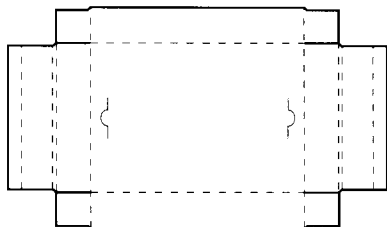
# Locking Methods 锁扣方法



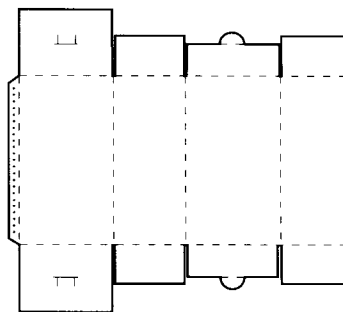
自动扣 Auto Lock



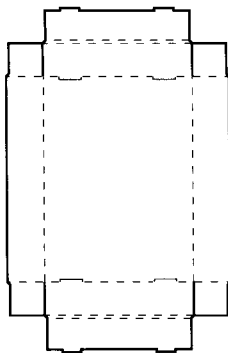
边锁 Side Lock



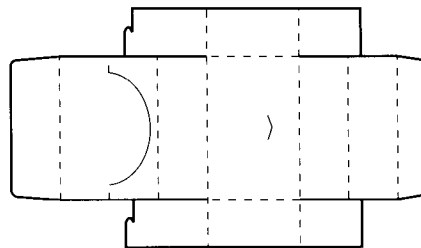
底锁 End Panel Lock



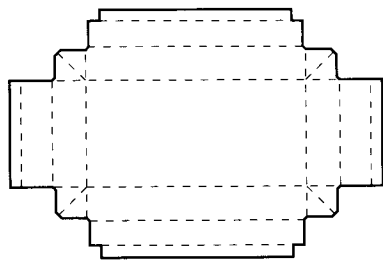
顶锁 Top Panel Lock



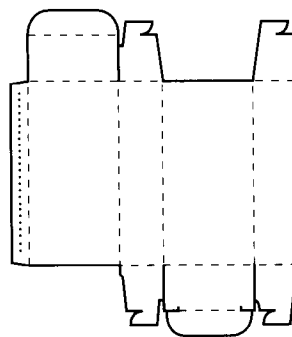
脚扣 Foot Lock



双扣 Double Lock

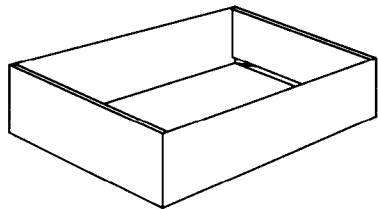


三角扣 Gusseted Dust Lock

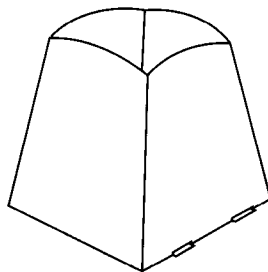


防尘扣 Dust Flap Lock

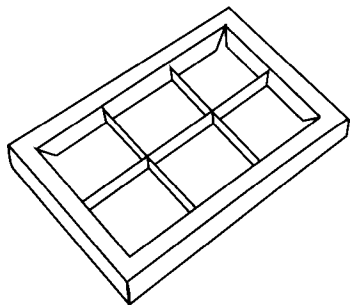
## Basic Structures 基本盒形



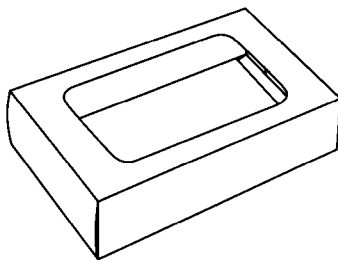
一般形 Universal



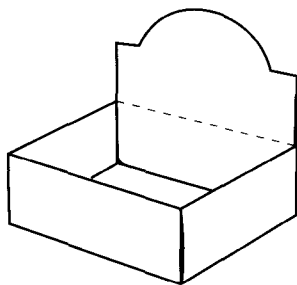
容器形 Holder



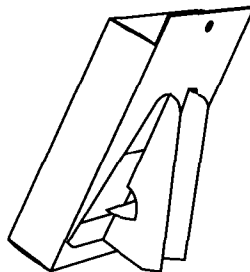
间隔式 Divider



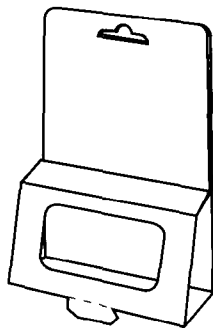
开窗形 Window Carton



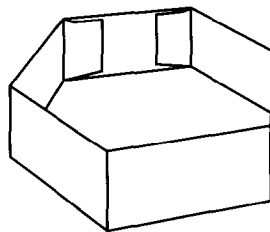
展示盒形 Display Box



展示架形 Display Rack



吊挂式 Hanging Box



盘子形 Tray



悬挂式展示盒

Hangings  
Displays

14 悬挂面板式展示盒 Box with Hanging Panel

