

international  
國際新景觀 new  
landscape 2007 NO.1  
特別版 special edition

International New Landscape 國際新景觀 (編著)  
宇同文化傳播有限公司 (策劃)

# 景觀公共藝術 Public Landscape Art



華中科技大學出版社



策劃編輯：石瑩 林佳藝  
特約編輯：姜穎  
責任編輯：王彩霞  
責任校對：熊磊麗  
版式設計：楊翠微

圖書在版編目 (CIP) 數據

景觀公共藝術 / 《國際新景觀》雜誌社編著. — 武漢：華  
中科技大學出版社，2007.9

ISBN 978-7-5609-4137-0

I. 景… II. 國… III. 城市—景觀—環境設計 IV.  
TU-856

中國版本圖書館CIP數據核字 (2007) 第131881號

書 名 景觀公共藝術

作 者 國際新景觀

出 版 華中科技大學出版社

地 址 武漢市珞喻路1037號 (郵編：430074)

書 號 ISBN 978-7-5609-4137-0/TU.189

印 刷 上海美雅延中印刷有限公司

成品尺寸 225 × 297mm

印張 16

字數 128千字

版次 2007年9月第1版

印次 2007年9月第1次印刷

定價 238.00元

# Public Landscape Art

## 景觀公共藝術

International New Landscape 國際新景觀 (編著)

宇同文化傳播有限公司 (策劃)



清華大學出版社

# Contents

## 目錄

### 004 Chess Park

—At the Brand Boulevard Passageway

象棋公園

—林蔭道旁的璀璨棋子

Rios Clementi Hale Studios

### 014 The Sydney and Walda Besthoff Sculpture Garden

悉尼&沃爾達·貝斯托夫雕塑園

Sawyer/Berson Architecture & Landscape Architecture, LLP

### 050 In the Center of the Periphery

—Wernigerode State Horticultural Show 2006

韋爾尼格羅德市2006薩克森  
—安哈爾特州州際園林展

hutterreimann + cejka Landschaftsarchitektur

### 066 Noritake Garden

諾裏塔克園區

Taisei Corporation, Landscape Design Group

### 080 The Encounter of Landscape and Art; The Union of Art and Landscape

—Grand Plaza

景觀與藝術的邂逅

藝術與景觀的狂歡

—盛大廣場

rush\wright associates

### 092 Open Spaces at KPM Quarter, Berlin

—Tiergarten

金色氣質 黃銅時代

—柏林皇家瓷器廠小區公共空間

TOPOTEK 1

### 100 Heroes Memorial

銘記的藝術

—亞歷山大英雄紀念廣場

Jeffrey Carbo Landscape Architects

### 106 The Minnetonka Center for the Arts

明內通卡藝術中心

—卡哇伊世界

oslund.and.assoc

### 114 Newcastle Quayside

紐卡斯爾碼頭

Insite Environments Ltd.

### 122 Distinct Public Art

景觀藝術讓商業轉換成另一種  
身份

Thomas Balsley Associates



132 Craigieburn Bypass  
Craigieburn交通轉換通道

Taylor Cullity Lethlean

138 Berliner Tor Centre

迷失在色彩的方陣中

——被建築收藏的景觀 被景觀收藏的藝術

GHP Landschaftsarchitekten-Gurr ·  
Herbst · Partner

154 Burley

特別的藝術種在特別的庭園

——伯萊莊園

Hollander Connelly & Zhang PLLC

160 Forest Gallery

林中藝術長廊

Taylor Cullity Lethlean

166 Docklands Park

蔚水天邊

——海濱公園

rush\wright associates

176 ECHO Leahy Center for  
Lake Champlain

香普萊湖濱水空間

H.KEITH WAGNER Partnership Landscape  
Architects

182 The National Emergency  
Services Memorial

一種強化,一種冷峻,一種精緻

Aspect Landscape Architecture & Urban Design

190 The Solidified Art

——The Symphony of Kawara

瓷瓦

——四季不敗的景觀

Landscape Design Office TABULA RASA

198 The Garden of Kawara

瓷瓦之園

Landscape Design Office TABULA RASA

206 Penthouse Garden  
Hanover

雨蓬園

WES & Partner  
Wehberg Schatz Betz Kaschke  
Landscape architects

214 Centre for Ideas  
Victorian College of the  
Arts

創意中心

rush\wright associates

226 The Australian Garden

澳大利亞植物園

Taylor Cullity Lethlean

236 Day-nursery  
"European Patent Office",  
Munich

日托園裏的歡樂地帶

Burger Landschaftsarchitekten, Germany

244 Green Axis 13 of  
Messestadt Riem

綠色地帶

Burger Landschaftsarchitekten

250 Wandering Wave upon  
the land

——Open spaces Maselake Channel

平地上的波浪

——美斯湖公共濱水空間

TOPOTEK 1

## 2006 ASLA Honor Awards in General Design

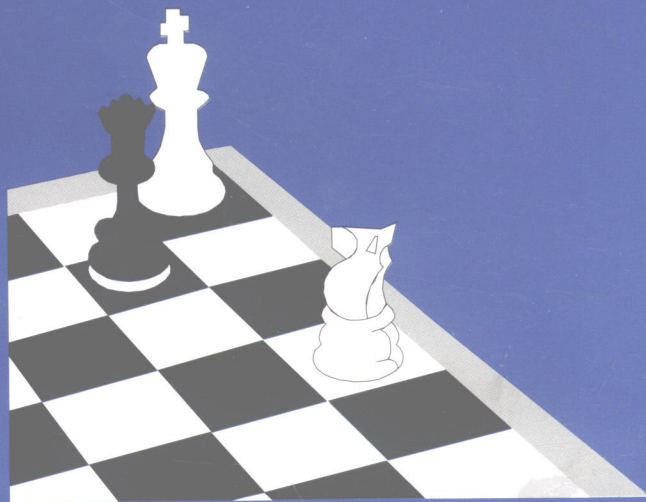
Fun, fabulous, and quirky. Exactly what an urban pocket park should be: playful.

— 2006 Professional Awards Jury Comments





# CHESS PARK



At the Brand Boulevard Passageway

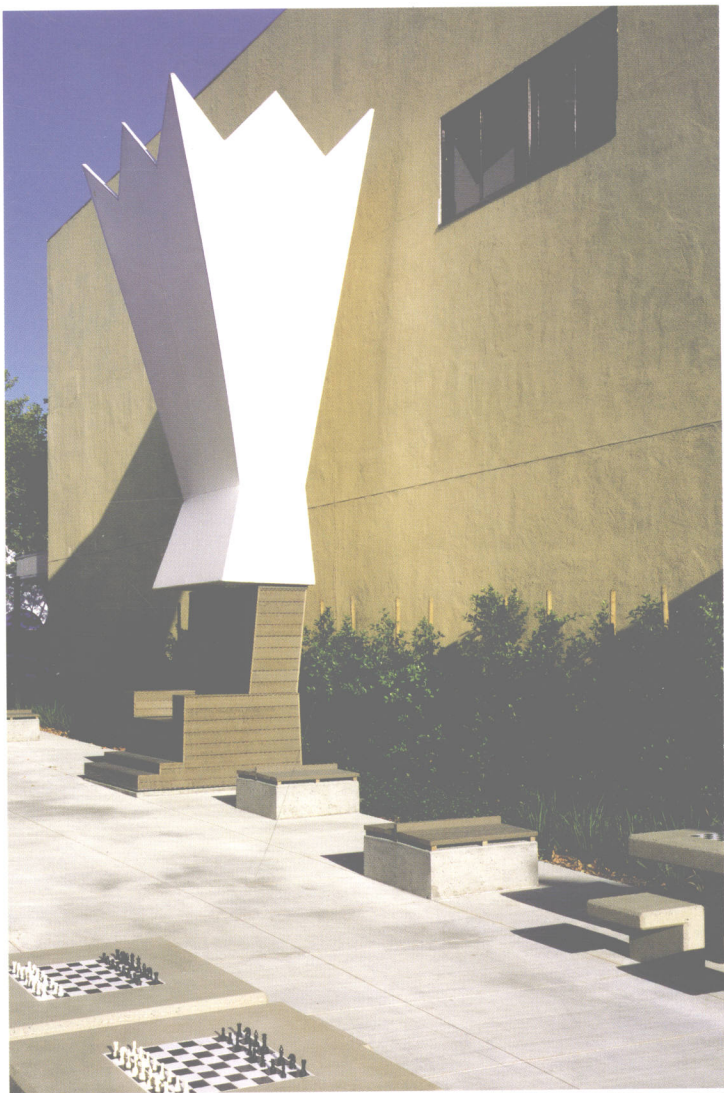
象棋公園——林蔭道旁的璀璨棋子

Rios Clementi Hale Studios









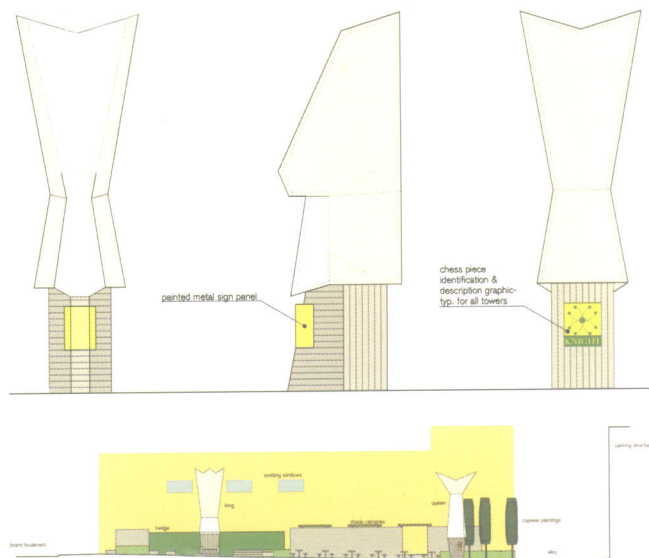
## 項目概述

此項工程將格林德爾市內一條平凡的通道改造成一座奇妙的社區象棋公園，為游玩者、社區居民以及路人提供了游樂的場所。根據預期目標，這項工程的設計耗資低、維護費用低，並且容易實施。這裏不僅是城市中一處健康、有益、生動的聚會空間，更成為了當地象棋俱樂部和棋藝愛好者的樂園。

## 設計描述

項目的位置位於兩座零售店之間，過去是用作連接停車場、劇場和周圍商店的道路。爲了將這處矩形空地成功地改造成一座象棋公園，設計者深入地研究了象棋的歷史淵源，並將象棋的規則、策略等內容作爲設計的基礎。鑒於這項遊戲中所有細節和差別都起源於其悠久的傳統和詞匯，公園的設計布局還模仿了象棋項目中的一些戰略性移動。爲了充分體現公園的設計目標，設計者建造了五座以象棋棋子爲原型的趣味燈塔。這些燈塔底座高8.53米，由回收利用的塑料和木材制作完成，頂端由白色的合成帆布制成，形狀類似於棋子。設計師受到野口勇燈的設計和康斯坦丁·布朗庫西抽象雕塑的啓發，用這些燈塔巧妙地詮釋了古代雕塑的演變。坐落在公園四處的燈塔散發着溫暖的光芒，激發了人們的創造力和挑戰力。

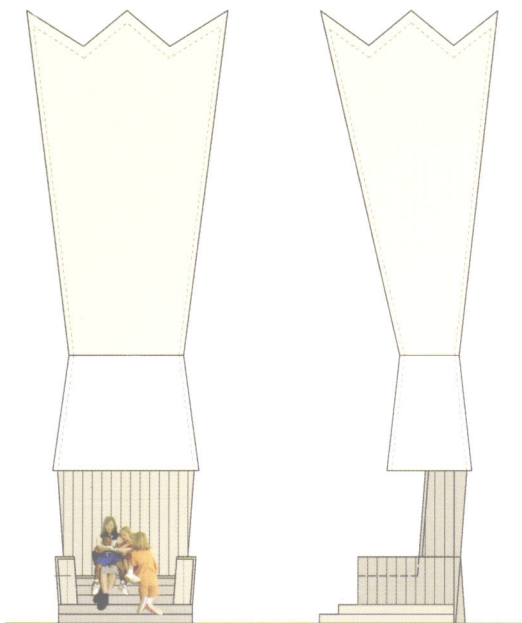
這些造型奇特的燈塔雕塑，爲公園提供了美妙的燈光和空間，巧妙地作了功能性彌補。整個公園可以分爲三個部分：綠蔭區、遊戲區以及對不同設計元素進行劃分的過渡區。



林蔭區的入口處矗立着主教之塔，這座燈塔不僅是公園入口處的標志，更如同一個迎賓者將游客引入這座有趣的象棋公園。坐落在附近的國王之塔則如同一個飽含着無數故事的巨型寶座，為人們提供了閱讀、表演等活動的場所。越過王座有一片舞臺，這裏是音樂家、演員和藝術家們聚會和展示才華的地方。舞臺后方的灰色牆壁為表演提供了合適的背景。舞臺旁邊還坐落着一座如同抽象城堡形狀的燈塔，為這裏舉辦的各種活動提供相關技術支持。低矮的混凝土長椅方便閑坐、休息，附近的上班族可以在此享受午餐或品酌咖啡。公園中心的遊戲區中設置有16張鑲嵌着黑白相間瓷磚的象棋桌，為下棋者提供了聚會、切磋棋藝的去處。皇后之塔也優雅地矗立于此，成為了格林德爾象棋俱樂部的標志。小巷附近過渡區中的騎士之塔如同一個警覺的哨兵，威嚴地守衛着公園。

公園的兩邊布置了一系列尺寸各異的幕牆，這些牆壁使用了同其他設計元素相同的建築材料。設計優美的幕牆在提供了燈光的同時，不僅為人們休憩、表演提供了方便，更平衡了道路兩側高聳的建築物的空間比例。公園兩側還種植了培育費用低的灌木和開花草木，蔥郁的柏樹巧妙地將人們引到清秀芬芳的花間小徑上。





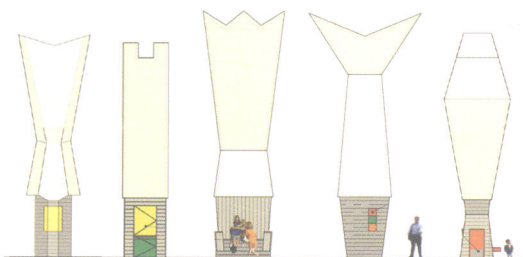
### Program

Transform a city passageway into a thriving, community-oriented chess park where players, the local community, and passersby can collectively participate in gamesmanship and festivities. The City desired an affordable, low-maintenance plan that was easily executable while bringing a wholesome, lively meeting place to the city's main drag. It wanted to provide a clean, safe environment for the local chess club and other participants to call home.

### Design

The site, sandwiched between two retail stores on Brand Boulevard's center village, formerly served as a pathway from a city parking garage to a theater and surrounding shops. To transform the rectangular space into a chess park, the designers researched the game's rich history and based the design program on its playing rituals, strategies, and lore. While every detail and nuance is derived from the tradition and lexicon of the game, the park's entire design is patterned after strategic movements made in chess.

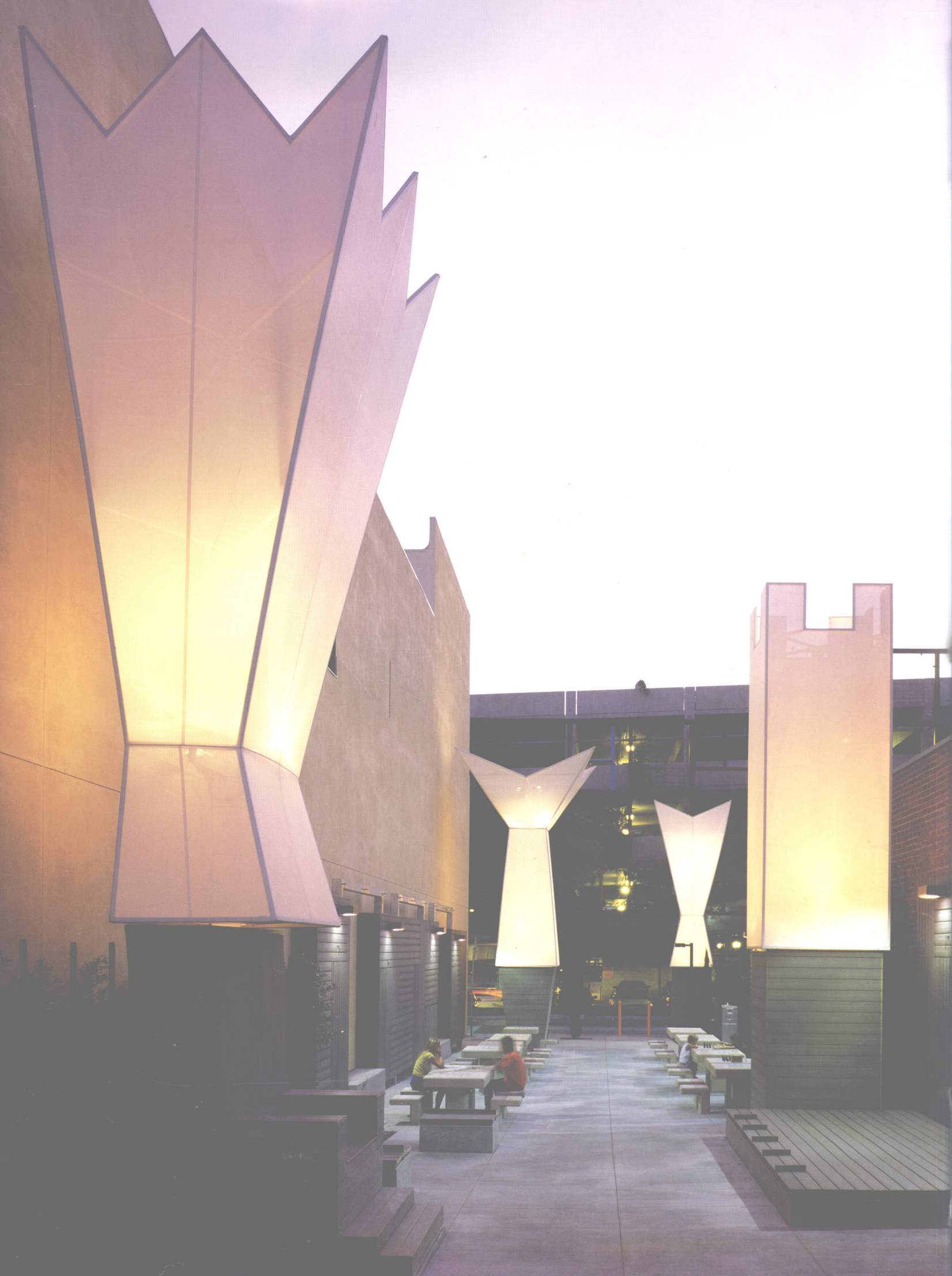
In proclamation of the park's intent, the designers created five playful light towers fashioned after the shape of chess pieces. The base of each 28-foot-high lantern is constructed from Trex, a recycled plastic and wood lumber product, and topped with white synthetic canvas formed in the shape of an abstracted chess piece. The architects reinterpreted the shapes to represent the evolution of the ancient figurines, finding inspiration in Isamu Noguchi's famous lamps and the abstract sculptures of Constantin Brancusi. The light towers emit a warm glow and are strategically placed around the park, inspiring creativity and intellectual challenge.









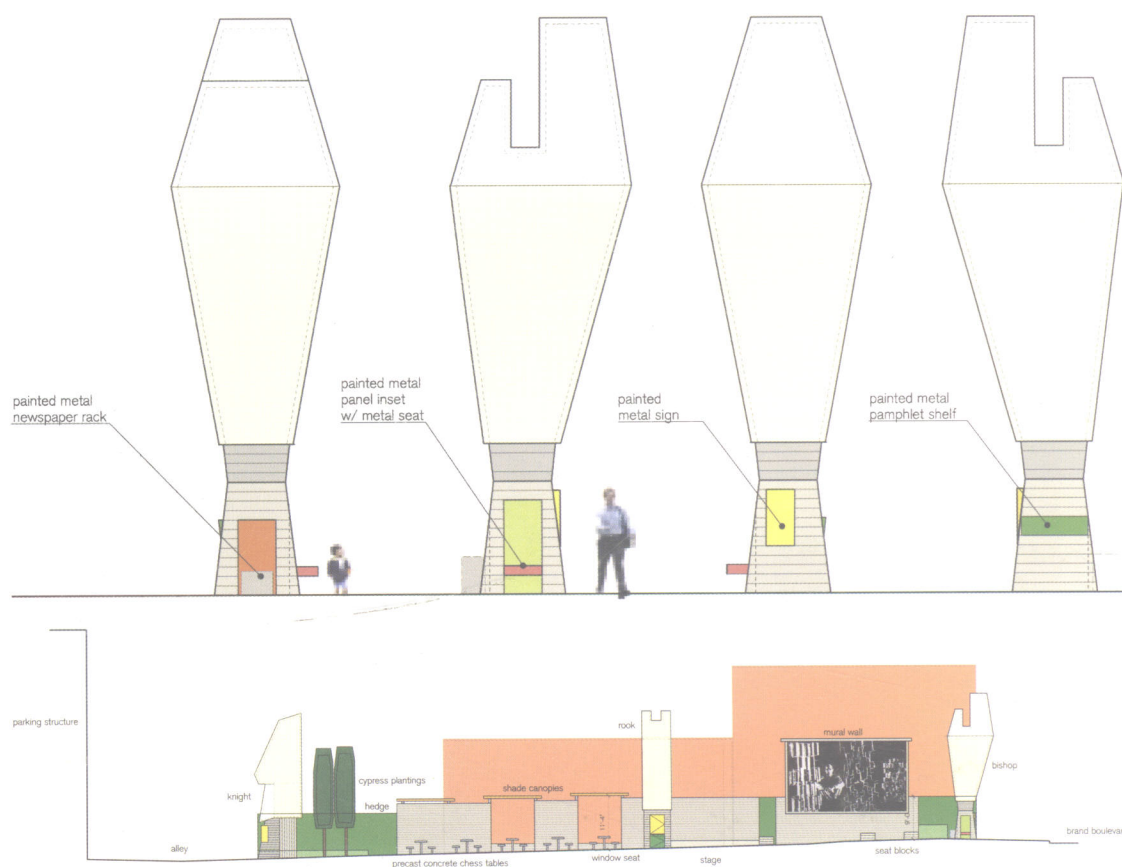






While the towers bring an iconic presence to the park, they also provide significant lighting and space to help solve the park's functional needs. The space is organized into three zones (the boulevard zone, gaming zone, and buffer zone) which give clarity to the different design elements.

The Bishop Tower stands at the entrance of the Brand Boulevard zone. Its role as a messenger is marked by the base, which carries the park entrance signage. Nearby, the King Tower sits as a giant, story-telling throne where community members can engage in outreach activities such as performances and book readings. Across the throne is a platform where musicians, actors, and artists can gather together and showcase their talents. A gray Trex wall folds up behind the platform to create a backdrop for performances. The Rook Tower, in the shape of an abstracted castle, is next to the stage, providing storage and technical support for events. Low concrete benches with Trex tops provide seating for local workers to enjoy their lunches or coffee breaks.





The park's center area is designated as the gaming zone where players congregate around the 16 concrete chess tables that feature inlaid black and white tile chess boards. The powerful Queen Tower presides over this area and stands as a symbol for the Glendale Chess Club. The Knight Tower stands as a sentry in the buffer zone near the alleyway, vigilantly protecting the park.

The two long borders of the park are lined with a series of screen walls of varying sizes, which are made from the same gray Trex material as the other design elements. While providing seating, lighting, and display opportunities, the screen walls also offset the scale of the tall buildings that flank the sides of the passageway. The designers planted the park's borders with lush, low maintenance shrubbery and white flowering perennials. Cypress trees provide a buffer to the alley.





**Credits:**

Project Team: Mark Rios, FAIA, FASLA,  
Principal

Frank Clementi, AIA, AIGA, Principal

Anthony Paradowski, Project Designer

Samantha Harris, Project Designer

Ola May, Designer

Affiliates: Carlson & Co. Engineering &

Fabrication, Chess Tower Fabrication

Frederick Towers, General Contractor

Lermond Landscaping, Landscape

Contractor Grossman & Speer

Associates, Inc., Structural Engineer

John M. Cruikshank Consultants, Inc.,

Civil Engineer

Sweeney & Associates, Inc., Irrigation

PEI Engineers, Electrical Engineer

Photos: Tom Bonner Anton Grassl

Location: Glendale, California

Client: City of Glendale

Size: 4,500 square feet

**Awards:**

Los Angeles Architectural Award, Civic

Award 2005, from Los Angeles Business

Council

Presidential Honoree, Public Space

Award 2005, American Institute of

Architects/Los Angeles Chapter





## 概述

坐落于新奧爾良城市公園的悉尼·沃爾達·貝斯托夫雕塑園占地面積約為2公頃，是新奧爾良市美術博物館的重要組成部分。區別于普通的雕塑公園，悉尼·沃爾達·貝斯托夫雕塑園坐落在一個由繁茂的松樹、玉蘭樹和橡樹林組成的景觀區內，在這裏生機盎然的植物與各式雕塑相映成趣。設計師通過與新奧爾良市的雷德貝特·弗勒頓建築設計公司合作，將雕塑巧妙地融入到了如詩如畫的綠色景觀當中，形成了將藝術性和娛樂性相結合的公共空間。經過重新整修的瀉湖將場地分割成了兩大區域，一邊是由成熟松樹和玉蘭樹組成的林地，靠近博物館；另一邊是由兩百棵成熟橡樹圍繞瀉湖形成的更為開闊的空間，與新奧爾良市植物園臨街相望。雕塑園裏陳列了55件由各國藝術家設計的雕塑，其中的44件作品已由貝斯托夫基金會捐贈給了新奧爾良市美術博物館。

喬治·西格爾的作品“三人四椅”夜景，簡約而莊嚴  
Night view of the Sculpture Theater with the "Three Figures and Four Benches" sculpture by George Segal.



# THE SYDNEY AND WALDA

Sawyer/Berson Architecture & Landscape Architecture, LLP

悉尼 & 沃尔达 · 贝斯托夫雕塑园

# BESTHOFF SCULPTURE GARDEN

"The landscape architect created beautiful rooms to couch each piece. The monochromatic planting palette resonates. This is really special."

— 2006 Professional Awards Jury  
Comments

