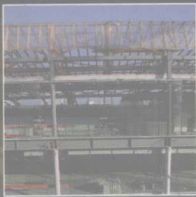


# BUILDING DESIGN AND CONSTRUCTION HANDBOOK

SIXTH EDITION



FREDERICK S. MERRITT & JONATHAN T. RICKETTS

---

# **BUILDING DESIGN AND CONSTRUCTION HANDBOOK**

---

**Frederick S. Merritt (Deceased)** Editor

**Jonathan T. Ricketts** Editor

**Sixth Edition**

**McGRAW-HILL**

New York San Francisco Washington, D.C. Auckland Bogotá  
Caracas Lisbon London Madrid Mexico City Milan  
Montreal New Delhi San Juan Singapore  
Sydney Tokyo Toronto

## Library of Congress Cataloging-in-Publication Data

Building design and construction handbook / Frederick S. Merritt, editor,  
Jonathan T. Ricketts, editor.—6th ed.

p. cm.

ISBN 0-07-041999-X

1. Building—Handbooks, manuals, etc. I. Merritt, Frederick S.

II. Ricketts, Jonathan T.

TH151.B825 2000

690—dc21

00-058388

# McGraw-Hill



A Division of The McGraw-Hill Companies

Copyright © 2001, 1994, 1982, 1975, 1965, 1958 by The McGraw-Hill Companies, Inc. All rights reserved. Printed in the United States of America. Except as permitted under the United States Copyright Act of 1976, no part of this publication may be reproduced or distributed in any form or by any means, or stored in a data base or retrieval system, without the prior written permission of the publisher.

2 3 4 5 6 7 8 9 0 DOC/DOC 0 6 5 4 3 2

ISBN 0-07-041999-X

*The sponsoring editor for this book was Larry S. Hager and the production supervisor was Sherri Souffrance. It was set in Times Roman by Pro-Image Corporation.*

*Printed and bound by R. R. Donnelley & Sons Company.*

McGraw-Hill books are available at special quantity discounts to use as premiums and sales promotions, or for use in corporate training programs. For more information, please write to the Director of Special Sales, Professional Publishing, McGraw-Hill, Two Penn Plaza, New York, NY 10121-2298. Or contact your local bookstore.

This book is printed on acid-free paper.

Information contained in this work has been obtained by The McGraw-Hill Companies, Inc. ("McGraw-Hill") from sources believed to be reliable. However, neither McGraw-Hill nor its authors guarantee the accuracy or completeness of any information published herein and neither McGraw-Hill nor its authors shall be responsible for any errors, omissions, or damages arising out of use of this information. This work is published with the understanding that McGraw-Hill and its authors are supplying information but are not attempting to render engineering or other professional services. If such services are required, the assistance of an appropriate professional should be sought.

---

# CONTRIBUTORS

---

**David J. Akers** *Civil Engineer, San Diego, California* (SECT. 4: Building Materials)

**James M. Bannon** *Chief Electrical Engineer, STV Incorporated, Douglassville, Pennsylvania* (SECT. 15: Electrical Systems)

**Robert F. Borg** *Chairman, Kreisler Borg Florman General Construction Company, Scarsdale, New York* (SECT. 17: Construction Project Management)

**Robert W. Day** *Chief Engineer, American Geotechnical, San Diego, California* (SECT. 6: Soil Mechanics and Foundations)

**Steven D. Edgett** *Edgett-Williams Consulting Group, Mill Valley, California* (SECT. 16: Vertical Circulation)

**Dave Flickinger** *National Roofing Contractors Association (NRCA), Technical Service Section, Rosemont, Illinois* (SECT. 12: Roof Systems)

**Gregory P. Gladfelter** *Gladfelter Engineering Group, Kansas City, Missouri* (SECT. 14: Plumbing—Water-Supply, Sprinkler, and Wastewater Systems)

**Bruce Glidden** *President, Glidden & Co., Ltd., Bridgeville, Pennsylvania* (SECT. 7: Structural Steel Construction)

**David P. Gustafson** *Vice President of Engineering, Concrete Reinforcing Steel Institute, Schaumburg, Illinois* (SECT. 9: Concrete Construction)

**Alan D. Hinklin** *Director, Skidmore, Owings & Merrill* (SECT. 2: The Building Team)

**Edward S. Hoffman** *President, Edward S. Hoffman, Ltd., Structural Engineers, Chicago* (SECT. 9: Concrete Construction)

**Lawrence E. McCabe** *Chief Engineer—Mechanical STV Group, Douglassville, Pennsylvania* (SECT. 13: Heating, Ventilation, and Air Conditioning)

**Frederick S. Merritt** *Consulting Engineer, West Palm Beach, Florida* (SECT. 11: Wall, Floor, and Ceiling Systems)

**David W. Mock** *Gee & Jenson, West Palm Beach, Florida* (SECT. 3: Protection against Hazards)

**Colman J. Mullin** *Senior Estimator, Bechtel Corporation, San Francisco, California* (SECT. 19: Construction Cost Estimating)

**Tom Nevling, RCDD** *Independent Consultant, Lancaster, Pennsylvania* (SECT. 18: Communications Systems)

**Brian L. Olsen** *Poole Fire Protection Engineering, Inc., Olathe, Kansas* (SECT. 14: Plumbing—Water-Supply, Sprinkler, and Wastewater Systems)

**Jonathan T. Ricketts** *Consulting Engineer, Palm Beach Gardens, Florida* (SECT. 1: System Fundamentals)

**John "Buddy" Showalter** *American Forest & Paper Association, Washington, D.C.* (SECT. 10: Wood Construction)

**Akbar Tamboli, Michael Xing, Mohsin Ahmed** *Thornton-Tomasetti Engineers, Newark, New Jersey* (SECT. 5: Structural Theory)

**Allen M. Williams** *Edgett-Williams Consulting Group, Mill Valley, California* (SECT. 16: Vertical Circulation)

**Thomas G. Williamson** *APA—The Engineered Wood Association, Tacoma, Washington* (SECT. 10: Wood Construction)

**Don S. Wolford** *Consulting Engineer, Middletown, Ohio* (SECT. 8: Cold-Formed Steel Construction)

**Wei-Wen Yu** *University of Missouri-Rolla, Rolla, Missouri* (SECT. 8: Cold-Formed Steel Construction)

---

# PREFACE

---

The sixth edition of the *Building Design and Construction Handbook* maintains the original objectives of previous editions which gained widespread acceptance among users. These objectives are to provide in a single volume a compendium of the best of the current knowledge and practices in building design and construction.

This information would be of greatest use to those who have to make decisions affecting the selection of engineering materials and construction methods. Emphasis is placed on fundamental principles and practical applications, with special attention to simplified procedures. Frequent reference is made to other sources where additional authoritative information may be obtained, such as architectural and engineering societies, manufacturers associations, and the Internet. An extensive index is provided to assist the reader in locating topics within the book.

Many new contributors and sections have been added in this edition to provide the reader with the latest developments and knowledge in the building industry. These developments include the expansion of data technology and communication systems within the building system, revisions to wind and seismic loadings, and an expansion of the information on fire sprinkler systems. To present the necessary information in a single volume, obsolete and less-important information in the earlier editions has been deleted.

The editor is very grateful to the contributors, not only for their care, skill, and knowledge used in preparing the sections, but also for their considerable sacrifices of personal time to prepare the sections.

*Jonathan T. Ricketts*

---

# CONTENTS

---

**Contributors**      xxi

**Preface**      xxiii

---

## **Section 1   System Fundamentals**      *Jonathan T. Ricketts*      **1.1**

---

- 1.1 Principles of Architecture / 1.1
- 1.2 Systems Design and Analysis / 1.3
- 1.3 Traditional Design Procedures / 1.4
- 1.4 Traditional Construction Procedures / 1.5
- 1.5 Role of the Client in Design and Construction / 1.8
- 1.6 Building Costs / 1.8
- 1.7 Major Building Systems / 1.9
- 1.8 Value Engineering / 1.22
- 1.9 Execution of Systems Design / 1.29
- 1.10 Building Codes / 1.36
- 1.11 Zoning Codes / 1.38
- 1.12 Other Regulations / 1.40
- 1.13 Systems Design by Team / 1.40
- 1.14 Project Peer Review / 1.41
- 1.15 Application of Systems Design / 1.41

---

## **Section 2   The Building Team-Managing the Building Process**      *Alan D. Hinklin*      **2.1**

---

- 2.1 Professional and Business Requirements of Architectural Engineers / 2.2
- 2.2 Client Objectives for Buildings / 2.2
- 2.3 Program Definition / 2.4
- 2.4 Organization of the Building Team / 2.4
- 2.5 Client-A/E Agreement / 2.6
- 2.6 A/E Liability and Insurance / 2.8
- 2.7 Definition of Project Phases / 2.10
- 2.8 Scheduling and Personnel Assignments / 2.11
- 2.9 Accelerated Design and Construction / 2.12
- 2.10 Design Management / 2.13
- 2.11 Internal Record Keeping / 2.14
- 2.12 Codes and Regulations / 2.14
- 2.13 Permits / 2.15
- 2.14 Energy Conservation / 2.16
- 2.15 The Interior Environment / 2.16
- 2.16 Cost Estimating and Value Engineering / 2.18
- 2.17 Technical Specifications / 2.18
- 2.18 Upfront Documents / 2.22
- 2.19 Quality Control for Architects and Engineers / 2.23
- 2.20 Bidding and Contract Award / 2.24
- 2.21 Construction Scheduling / 2.24
- 2.22 Shop Drawing Review / 2.25

- 2.23 Role of Architect or Engineer During Construction / 2.26
- 2.24 Testing and Balancing of Building Systems / 2.29
- 2.25 Postconstruction Operation and Maintenance / 2.29
- 2.26 Record Drawings / 2.30
- 2.27 Follow-Up Interviews / 2.30
- 2.28 Management of Disputes / 2.30
- 2.29 Professional Ethics / 2.31

---

### **Section 3 Protection against Hazards** *David W. Mock*

---

**3.1**

- 3.1 Risk Management / 3.1
- 3.2 Wind Protection / 3.3
- 3.3 Protection against Earthquakes / 3.11
- 3.4 Protection against Water / 3.15
- 3.5 Protection against Fire / 3.28
- 3.6 Lightning Protection / 3.48
- 3.7 Protection against Intruders / 3.50

---

### **Section 4 Building Materials** *David J. Akers*

---

**4.1**

#### **CEMENTITIOUS MATERIALS**

- 4.1 Types of Cementitious Materials / 4.1
- 4.2 Portland Cements / 4.2
- 4.3 Aluminous Cements / 4.5
- 4.4 Natural Cements / 4.6
- 4.5 Limes / 4.6
- 4.6 Low-Temperature Gypsum Derivatives / 4.8
- 4.7 Oxychloride Cements / 4.9
- 4.8 Masonry Cements / 4.9
- 4.9 Fly Ashes / 4.9
- 4.10 Silica Fume (Microsilica) / 4.10

#### **AGGREGATES**

- 4.11 Normal-Weight Aggregates / 4.11
- 4.12 Heavyweight and Lightweight Aggregates / 4.14

#### **ADMIXTURES FOR CONCRETE**

- 4.13 Chemical and Mineral Admixtures / 4.14
- 4.14 Fibers for Concrete Mixes / 4.18
- 4.15 Miscellaneous Admixtures / 4.19

#### **MORTARS AND CONCRETES**

- 4.16 Mortars / 4.19
- 4.17 Portland-Cement Concrete / 4.21
- 4.18 Polymer Concretes / 4.26
- 4.19 Concrete Masonry Units / 4.27

#### **BURNED-CLAY UNITS**

- 4.20 Brick-Clay or Shale / 4.28
- 4.21 Structural Clay Tile / 4.30
- 4.22 Ceramic Tiles / 4.32
- 4.23 Architectural Terra Cotta / 4.32

#### **BUILDING STONES**

- 4.24 Properties of Building Stones / 4.32
- 4.25 Freezing and Thawing of Stone / 4.35



## GYPSUM PRODUCTS

- 4.26 Gypsumboard / 4.35
- 4.27 Gypsum Lath / 4.37
- 4.28 Gypsum Sheathing Board / 4.37
- 4.29 Gypsum Partition Tile or Block / 4.37
- 4.30 Gypsum Plank / 4.37

## GLASS AND GLASS BLOCK

- 4.31 Window Glass / 4.38
- 4.32 Glass Block / 4.40

## WOOD

- 4.33 Mechanical Properties of Wood / 4.44
- 4.34 Effects of Hygroscopic Properties of Wood / 4.44
- 4.35 Commercial Grades of Wood / 4.46
- 4.36 Destroyers and Preservatives / 4.48
- 4.37 Glues and Adhesives for Wood / 4.50
- 4.38 Plywood and Other Fabricated Wood Boards / 4.51
- 4.39 Wood Bibliography / 4.52

## STEEL AND STEEL ALLOYS

- 4.40 Types of Irons and Steels / 4.52
- 4.41 Properties of Structural Steels / 4.58
- 4.42 Heat Treatment and Hardening of Steels / 4.61
- 4.43 Effects of Grain Size / 4.62
- 4.44 Steel Alloys / 4.62
- 4.45 Welding Ferrous Materials / 4.68
- 4.46 Effects of Steel Production Methods / 4.70
- 4.47 Effects of Hot Rolling / 4.72
- 4.48 Effects of Punching and Shearing / 4.73
- 4.49 Corrosion of Iron and Steel / 4.74
- 4.50 Steel and Steel Alloy Bibliography / 4.75

## ALUMINUM AND ALUMINUM-BASED ALLOYS

- 4.51 Aluminum-Alloy Designations / 4.75
- 4.52 Finishes for Aluminum / 4.76
- 4.53 Structural Aluminum / 4.76
- 4.54 Welding and Brazing of Aluminum / 4.77
- 4.55 Bolted and Riveted Aluminum Connections / 4.79
- 4.56 Prevention of Corrosion of Aluminum / 4.79
- 4.57 Aluminum Bibliography / 4.80

## COPPER AND COPPER-BASED ALLOYS

- 4.58 Copper / 4.80
- 4.59 Brass / 4.81
- 4.60 Nickel Silvers / 4.82
- 4.61 Cupronickel / 4.83
- 4.62 Bronze / 4.83
- 4.63 Copper Bibliography / 4.84

## LEAD AND LEAD-BASED ALLOYS

- 4.64 Applications of Lead / 4.84
- 4.65 Lead Bibliography / 4.85

## NICKEL AND NICKEL-BASED ALLOYS

- 4.66 Properties of Nickel and Its Alloys / 4.85
- 4.67 Nickel Bibliography / 4.86

## PLASTICS

- 4.68 General Properties of Plastics / 4.86
- 4.69 Fillers and Plasticizers / 4.87
- 4.70 Molding and Fabricating Methods for Plastics / 4.87

|  |       |
|--|-------|
| 4.71 Thermosetting Plastics /                      | 4.88  |
| 4.72 Thermoplastic Resins /                        | 4.90  |
| 4.73 Elastomers, or Synthetic Rubbers /            | 4.92  |
| COMBINATION OF PLASTICS AND OTHER MATERIALS        |       |
| 4.74 High-Pressure Laminates /                     | 4.93  |
| 4.75 Reinforced Plastics /                         | 4.93  |
| 4.76 Laminated Rubber /                            | 4.94  |
| 4.77 Plastics Bibliography /                       | 4.95  |
| PORCELAIN-ENAMELED PRODUCTS                        |       |
| 4.78 Porcelain Enamel on Metal /                   | 4.96  |
| 4.79 Porcelain Bibliography /                      | 4.96  |
| ASPHALT AND BITUMINOUS PRODUCTS                    |       |
| 4.80 Asphalts for Dampproofing and Waterproofing / | 4.97  |
| 4.81 Bituminous Roofing /                          | 4.97  |
| 4.82 Asphalt Shingles /                            | 4.98  |
| 4.83 Asphalt Mastics and Grouts /                  | 4.99  |
| 4.84 Bituminous Pavements /                        | 4.99  |
| 4.85 Asphalt Bibliography /                        | 4.99  |
| JOINT SEALS  |       |
| 4.86 Calking Compounds /                           | 4.100 |
| 4.87 Sealants /                                    | 4.100 |
| 4.88 Gaskets /                                     | 4.101 |
| 4.89 Joint Seals Bibliography /                    | 4.101 |
| PAINTS AND OTHER COATINGS                          |       |
| 4.90 Vehicles or Binders /                         | 4.102 |
| 4.91 Pigments for Paints /                         | 4.103 |
| 4.92 Resins for Paints /                           | 4.104 |
| 4.93 Coatings Bibliography /                       | 4.105 |

## **Section 5 Structural Theory *Akbar Tamboli, Michael Xing, and Mohsin Ahmed***

5.1

|   |       |
|---|-------|
| 5.1 Design Loads /  | 5.2   |
| 5.2 Stress and Strain /   | 5.17  |
| 5.3 Stresses at a Point /                                       | 5.24  |
| 5.4 Torsion /   | 5.28  |
| 5.5 Straight Beams /  | 5.30  |
| 5.6 Curved Beams /  | 5.52  |
| 5.7 Buckling of Columns /                                       | 5.58  |
| 5.8 Graphic-Statics Fundamentals /                              | 5.62  |
| 5.9 Roof Trusses /  | 5.63  |
| 5.10 General Tools for Structural Analysis /                    | 5.67  |
| 5.11 Continuous Beams and Frames /                              | 5.78  |
| 5.12 Load Distribution to Bents and Shear Walls /               | 5.101 |
| 5.13 Finite-Element Methods /                                   | 5.110 |
| 5.14 Stresses in Arches /                                       | 5.115 |
| 5.15 Thin-Shell Structures /                                    | 5.119 |
| 5.16 Cable-Supported Structures /                               | 5.128 |
| 5.17 Air-Stabilized Structures /                                | 5.138 |
| 5.18 Structural Dynamics /                                      | 5.140 |
| 5.19 Earthquake Loads /   | 5.162 |
| 5.20 Floor Vibrations /   | 5.183 |
| 5.21 Wiss and Parmelee Rating Factor for Transient Vibrations / | 5.185 |
| 5.22 Reiher-Meister Scale for Steady-State Vibrations /         | 5.186 |
| 5.23 Murray Criterion for Walking Vibrations /                  | 5.188 |

---

**Section 6 Soil Mechanics and Foundations Robert W. Day 6.1**


---

- 6.1 Introduction / 6.1
- 6.2 Field Exploration / 6.3
- 6.3 Laboratory Testing / 6.23
- 6.4 Effective Stress and Stress Distribution / 6.43
- 6.5 Settlement Analyses / 6.50
- 6.6 Bearing Capacity Analyses / 6.61
- 6.7 Retaining Walls / 6.76
- 6.8 Foundations / 6.88
- 6.9 Foundation Excavations / 6.96
- 6.10 Grading and Other Site Improvement Methods / 6.97
- 6.11 Geosynthetics / 6.115

---

**Section 7 Structural Steel Construction Bruce Glidden 7.1**


---

- 7.1 Codes and Specifications / 7.2
- 7.2 Mill Materials / 7.2
- 7.3 Fasteners / 7.8
- 7.4 Fabrication / 7.17
- 7.5 Quality Assurance / 7.17
- STRUCTURAL FRAMING SYSTEMS
- 7.6 Wall Bearing Framing / 7.18
- 7.7 Skeleton Framing / 7.20
- 7.8 Long-Span Framing / 7.22
- 7.9 Steel and Concrete Framing / 7.29
- BRACING SYSTEMS
- 7.10 Bracing Design Considerations / 7.30
- 7.11 Frame Bracing / 7.31
- 7.12 Bracing for Individual Members / 7.36
- FLOOR AND ROOF SYSTEMS
- 7.13 Floor-Framing Design Considerations / 7.39
- 7.14 Roof Framing Systems / 7.44
- DESIGN OF MEMBERS
- 7.15 Bases for ASD and LRFD / 7.44
- 7.16 Design Aids and References / 7.45
- 7.17 Serviceability Criteria / 7.47
- 7.18 Tension Members / 7.49
- 7.19 Columns and Other Compression Members / 7.50
- 7.20 Beams and Other Flexural Members / 7.57
- 7.21 Plate Girders / 7.67
- 7.22 Web or Flange Load-Bearing Stiffeners / 7.76
- 7.23 Bearing / 7.79
- 7.24 Combined Axial Compression and Bending / 7.80
- 7.25 Combined Axial Tension and Bending / 7.82
- 7.26 Composite Construction / 7.83
- 7.27 Members Subject to Torsion / 7.89
- 7.28 Members Subject to Cyclic Loading / 7.90
- DESIGN OF CONNECTIONS
- 7.29 Combinations of Fasteners / 7.91
- 7.30 Load Capacity of Bolts / 7.91
- 7.31 Load Capacity of Welds / 7.93
- 7.32 Bearing-Type Bolted Connections / 7.96
- 7.33 Slip-Critical Bolted Connections / 7.100
- 7.34 Eccentrically Loaded Welded Connections / 7.101

7.35 Types of Beam Connections / 7.103

7.36 Beams Splices / 7.113

7.37 Column Splices / 7.114

#### STEEL ERECTION

7.38 Erection Equipment / 7.117

7.39 Clearance for Erecting Beams / 7.117

7.40 Erection Sequence / 7.119

7.41 Field-Welding Procedures / 7.120

7.42 Erection Tolerances / 7.121

7.43 Adjusting Lintels / 7.123

#### CORROSION PROTECTION

7.44 Corrosion of Steel / 7.124

7.45 Painting Steel Structures / 7.125

7.46 Paint Systems / 7.125

7.47 Field-Painting Steel / 7.126

7.48 Steel in Contact with Concrete / 7.127

#### FIRE PROTECTION OF STRUCTURAL STEEL

7.49 Effect of Heat on Steel / 7.129

7.50 Fire Protection of Exterior / 7.129

7.51 Materials for Improving Fire Resistance / 7.130

7.52 Pierced Ceilings and Floors / 7.131

7.53 Fire-Resistance Ratings / 7.133

7.54 Bibliography / 7.134

## Section 8 Cold-Formed Steel Construction *Don S. Wolford* and *Wei-Wen Yu*

8.1

### COLD-FORMED SHAPES

8.1 Material for Cold-Formed Steel Shapes / 8.2

8.2 Utilization of Cold Work of Forming / 8.7

8.3 Types of Cold-Formed Shapes / 8.8

### DESIGN PRINCIPLES FOR COLD-FORMED STEEL SHAPES

8.4 Some Basic Concepts of Cold-Formed Steel Design / 8.10

8.5 Structural Behavior of Flat Compression Elements / 8.14

8.6 Unstiffened Cold-Formed Elements Subject to Local Buckling / 8.17

8.7 Stiffened Cold-Formed Elements Subject to Local Buckling / 8.17

8.8 Application of Effective Widths / 8.21

8.9 Maximum Flat-Width Ratios of Cold-Formed Steel / 8.22

8.10 Unit Stresses for Cold-Formed Steel / 8.22

8.11 Laterally Unsupported Cold-Formed Beams / 8.22

8.12 Allowable Shear Strength in Webs / 8.23

8.13 Concentrically Loaded Compression Members / 8.23

8.14 Combined Axial and Bending Stresses / 8.25

### JOINING OF COLD-FORMED STEEL

8.15 Welding of Cold-Formed Steel / 8.25

8.16 Arc Welding of Cold-Formed Steel / 8.26

8.17 Resistance Welding of Cold-Formed Steel / 8.31

8.18 Bolting of Cold-Formed Steel Members / 8.33

8.19 Self-Tapping Screws for Joining Sheet Steel Components / 8.40

8.20 Special Fasteners for Cold-Formed Steel / 8.41

### COLD-FORMED STEEL FLOOR, ROOF, AND WALL CONSTRUCTION

8.21 Steel Roof Deck / 8.42

- 8.22 Cellular Steel Floor and Roof Panels / 8.47
- 8.23 Corrugated Sheets for Roofing, Siding, and Decking / 8.50
- 8.24 Lightweight Steel Metric Sheeting / 8.53
- 8.25 Stainless Steel Structural Design / 8.54
- PREENGINEERED STEEL BUILDINGS
- 8.26 Characteristics of Preengineered Steel Buildings / 8.55
- 8.27 Structural Design of Preengineered Buildings / 8.56
- OPEN-WEB STEEL JOISTS
- 8.28 Design of Open-Web Steel Joists / 8.57
- 8.29 Construction Details for Open-Web Steel Joists / 8.59

## **Section 9 Concrete Construction *Edward S. Hoffman* and *David P. Gustafson***

**9.1**

### **CONCRETE AND ITS INGREDIENTS**

- 9.1 Cementitious Materials / 9.1
- 9.2 Cements / 9.2
- 9.3 Aggregates / 9.2
- 9.4 Proportioning Concrete Mixes / 9.3
- 9.5 Yield Calculation / 9.6
- 9.6 Properties and Tests of Fresh (Plastic) Concrete / 9.7
- 9.7 Properties and Tests of Hardened Concrete / 9.8
- 9.8 Measuring and Mixing Concrete Ingredients / 9.10
- 9.9 Admixtures / 9.11

### **QUALITY CONTROL**

- 9.10 Mix Design / 9.14
- 9.11 Check Tests of Materials / 9.17
- 9.12 At the Mixing Plant-Yield Adjustments / 9.17
- 9.13 At the Placing Point-Slump Adjustments / 9.18
- 9.14 Strength Tests / 9.18
- 9.15 Test Evaluation / 9.21

### **FORMWORK**

- 9.16 Responsibility for Formwork / 9.22
- 9.17 Materials and Accessories for Forms / 9.22
- 9.18 Loads on Formwork / 9.22
- 9.19 Form Removal and Reshoring / 9.25
- 9.20 Special Forms / 9.26
- 9.21 Inspection of Formwork / 9.26

### **REINFORCEMENT**

- 9.22 Reinforcing Bars / 9.26
- 9.23 Welded-Wire Fabric (WWF) / 9.28
- 9.24 Prestressing Steel / 9.29
- 9.25 Fabrication and Placing of Rebars / 9.29
- 9.26 Bar Supports / 9.32
- 9.27 Inspection of Reinforcement / 9.33

### **CONCRETE PLACEMENT**

- 9.28 Good Practice / 9.34
- 9.29 Methods of Placing / 9.34
- 9.30 Excess Water / 9.34
- 9.31 Consolidation / 9.35
- 9.32 Concreting Vertical Elements / 9.35
- 9.33 Concreting Horizontal Elements / 9.36

|   |       |
|---|-------|
| 9.34 Bonding to Hardened Concrete /   | 9.37  |
| 9.35 Heavy-Duty Floor Finishes /  | 9.37  |
| 9.36 Concreting in Cold Weather /   | 9.38  |
| 9.37 Concreting in Hot Weather /  | 9.38  |
| 9.38 Curing Concrete /  | 9.39  |
| 9.39 Joints in Concrete /   | 9.40  |
| 9.40 Inspection of Concrete Placement /                                     | 9.41  |
| STRUCTURAL ANALYSIS OF CONCRETE STRUCTURES                                  |       |
| 9.41 Analyses of One-Way Floor and Roof Systems /                           | 9.42  |
| 9.42 Two-Way Slab Frames /  | 9.44  |
| 9.43 Special Analyses /   | 9.45  |
| STRUCTURAL DESIGN OF FLEXURAL MEMBERS                                       |       |
| 9.44 Strength Design with Factored Loads /                                  | 9.45  |
| 9.45 Allowable-Stress Design at Service Loads (Alternative Design Method) / | 9.47  |
| 9.46 Strength Design for Flexure /  | 9.49  |
| 9.47 Shear in Flexural Members /  | 9.53  |
| 9.48 Torsion in Reinforced Concrete Members /                               | 9.55  |
| 9.49 Development, Anchorage, and Splices of Reinforcement /                 | 9.58  |
| 9.50 Crack Control /  | 9.70  |
| 9.51 Deflection of Reinforced-Concrete Beams and Slabs /                    | 9.71  |
| ONE-WAY REINFORCED-CONCRETE SLABS   |       |
| 9.52 Analysis and Design of One-Way Slabs /                                 | 9.75  |
| 9.53 Embedded Pipes in One-Way Slabs /                                      | 9.77  |
| ONE-WAY CONCRETE-JOIST CONSTRUCTION   |       |
| 9.54 Standard Sizes of Joists /   | 9.79  |
| 9.55 Design of One-Way Concrete-Joist Construction /                        | 9.79  |
| 9.56 Reinforcement of Joists for Flexure /                                  | 9.80  |
| 9.57 Shear in Joists /  | 9.81  |
| 9.58 Wide-Module Joist Construction /                                       | 9.82  |
| TWO-WAY SLAB CONSTRUCTION   |       |
| 9.59 Analysis and Design of Flat Plates /                                   | 9.84  |
| 9.60 Flat Slabs /   | 9.90  |
| 9.61 Two-Way Slabs on Beams /   | 9.92  |
| 9.62 Estimating Guide for Two-Way Construction /                            | 9.93  |
| BEAMS   |       |
| 9.63 Definitions of Flexural Members /                                      | 9.94  |
| 9.64 Flexural Reinforcement /   | 9.94  |
| 9.65 Reinforcement for Shear and Flexure /                                  | 9.98  |
| 9.66 Reinforcement for Torsion and Shear /                                  | 9.100 |
| 9.67 Crack Control in Beams /   | 9.100 |
| WALLS   |       |
| 9.68 Bearing Walls /  | 9.101 |
| 9.69 Nonbearing Walls /   | 9.103 |
| 9.70 Cantilever Retaining Walls /   | 9.103 |
| 9.71 Counterfort Retaining Walls /  | 9.105 |
| 9.72 Retaining Walls Supported on Four Sides /                              | 9.106 |
| FOUNDATIONS   |       |
| 9.73 Types of Foundations /   | 9.106 |
| 9.74 General Design Principles for Foundations /                            | 9.107 |
| 9.75 Spread Footings for Walls /  | 9.110 |
| 9.76 Spread Footings for Individual Columns /                               | 9.111 |
| 9.77 Combined Spread Footings /   | 9.112 |
| 9.78 Strap Footings /   | 9.114 |
| 9.79 Mat Foundations /  | 9.115 |

- 9.80 Pile Foundations / 9.115
- 9.81 Drilled-Pier Foundations / 9.117
- COLUMNS
- 9.82 Basic Assumptions for Strength Design of Columns / 9.118
- 9.83 Design Requirements for Columns / 9.122
- 9.84 Column Ties and Tie Patterns / 9.124
- 9.85 Biaxial Bending of Columns / 9.124
- 9.86 Slenderness Effects on Concrete Columns / 9.125
- 9.87 Economy in Column Design / 9.128
- SPECIAL CONSTRUCTION
- 9.88 Deep Beams / 9.129
- 9.89 Shear Walls / 9.131
- 9.90 Reinforced-Concrete Arches / 9.133
- 9.91 Reinforced-Concrete Thin Shells / 9.134
- 9.92 Concrete Folded Plates / 9.136
- 9.93 Slabs on Grade / 9.137
- 9.94 Seismic-Resistant Concrete Construction / 9.138
- 9.95 Composite Flexural Members / 9.138
- PRECAST-CONCRETE MEMBERS
- 9.96 Design Methods for Precast Members / 9.140
- 9.97 Reinforcement Cover in Precast Members / 9.140
- 9.98 Tolerances for Precast Construction / 9.140
- 9.99 Accelerated Curing / 9.141
- 9.100 Precast Floor and Roof Systems / 9.141
- 9.101 Precast Ribbed Slabs, Folded Plates, and Shells / 9.142
- 9.102 Wall Panels / 9.142
- 9.103 Lift Slabs / 9.144
- PRESTRESSED-CONCRETE CONSTRUCTION
- 9.104 Basic Principles of Prestressed Concrete / 9.144
- 9.105 Losses in Prestress / 9.145
- 9.106 Allowable Stresses at Service Loads / 9.147
- 9.107 Design Procedure for Prestressed-Concrete Beams / 9.149
- 9.108 Flexural-Strength Design of Prestressed Concrete / 9.149
- 9.109 Shear-Strength Design of Prestressed Concrete / 9.151
- 9.110 Bond, Development, and Grouting of Tendons / 9.153
- 9.111 Application and Measurement of Prestress / 9.155
- 9.112 Concrete Cover in Prestressed Members / 9.155

## **Section 10 Wood Construction John "Buddy" Showalter and Thomas G. Williamson**

**10.1**

- 10.1 Basic Characteristics of Wood / 10.1
- 10.2 Sectional Properties of Wood Products / 10.6
- 10.3 Design Values for Lumber and Timber / 10.10
- 10.4 Structural Grading of Wood / 10.11
- 10.5 Adjustment Factors for Structural Members / 10.11
- 10.6 Pressure-Preservative Treatments for Wood / 10.19
- 10.7 Design Provisions for Flexural Members / 10.21
- 10.8 Wood Compression Members / 10.28
- 10.9 Tension Members / 10.30
- 10.10 Combined Bending and Axial Loading / 10.30
- 10.11 Bearing Stresses / 10.32
- 10.12 Structural Panels / 10.33
- 10.13 Design Values for Mechanical Connections / 10.51

- 10.14 Adjustment of Design Values for Connections / 10.51
- 10.15 Bolts / 10.59
- 10.16 Lag Screws / 10.60
- 10.17 Split-Ring and Shear-Plate Connectors / 10.61
- 10.18 Wood Screws / 10.63
- 10.19 Nails and Spikes / 10.65
- 10.20 Structural Framing Connections / 10.66
- 10.21 Glued Fastenings / 10.66
- 10.22 Wood Trusses / 10.68
- 10.23 Design of Timber Arches / 10.72
- 10.24 Timber Decking / 10.73
- 10.25 Wood-Frame Construction / 10.76
- 10.26 Permanent Wood Foundations / 10.80
- 10.27 Post Frame and Pole Construction / 10.81
- 10.28 Design for Fire Safety / 10.83
- 10.29 Timber Fabrication and Erection / 10.85
- 10.30 Engineered Glued Wood Products / 10.89

---

## **Section 11 Wall, Floor, and Ceiling Systems *Frederick S. Merritt* 11.1**

---

### **MASONRY WALLS**

- 11.1 Masonry Definitions / 11.2
- 11.2 Quality of Materials for Masonry / 11.5
- 11.3 Construction of Masonry / 11.8
- 11.4 Lateral Support for Masonry Walls / 11.16
- 11.5 Chimneys and Fireplaces / 11.18
- 11.6 Provisions for Dimensional Changes / 11.19
- 11.7 Repair of Leaky Joints / 11.21
- 11.8 Masonry-Thickness Requirements / 11.22
- 11.9 Determination of Masonry Compressive Strength / 11.24
- 11.10 Allowable Stresses in Masonry / 11.25
- 11.11 Floor-Wall Connections / 11.31
- 11.12 Glass Block / 11.33
- 11.13 Masonry Bibliography / 11.34

### **STUD WALLS**

- 11.14 Stud-Wall Construction / 11.35
- 11.15 Sheathing / 11.37

### **CURTAIN WALLS**

- 11.16 Functional Requirements of Curtain Walls / 11.37
- 11.17 Wood Facades / 11.38
- 11.18 Wall Shingles and Siding / 11.39
- 11.19 Stucco / 11.39
- 11.20 Precast-Concrete or Metal and Glass Facings / 11.40
- 11.21 Sandwich Panels / 11.41

### **PARTITIONS**

- 11.22 Types of Partitions / 11.43
- 11.23 Structural Requirements of Partitions / 11.44

### **PLASTER AND GYPSUMBOARD**

- 11.24 Plaster and Gypsumboard Construction Terms / 11.45
- 11.25 Plaster Finishes / 11.53
- 11.26 Gypsumboard Finishes / 11.62
- 11.27 Isolation and Control Joints in Gypsumboard Construction / 11.70



## CERAMIC-TILE CONSTRUCTION

11.28 Types of Ceramic Tile / 11.72

11.29 Tile Installation Methods / 11.73

## PANEL FINISHES

11.30 Plywood Finishes / 11.77

11.31 Other Types of Panel Finishes / 11.78

## FLOOR SYSTEMS

11.32 Asphalt Tiles / 11.78

11.33 Cork Tiles / 11.79

11.34 Vinyl Flooring / 11.79

11.35 Rubber Flooring / 11.80

11.36 Installation of Thin Coverings / 11.80

11.37 Carpets / 11.82

11.38 Terrazzo / 11.83

11.39 Concrete Floors / 11.84

11.40 Wood Floors / 11.84

11.41 Industrial Floors / 11.85

11.42 Conductive Flooring / 11.86

11.43 Specifications and Standards for Flooring / 11.86

## WINDOWS

11.44 Window Selection / 11.87

11.45 Window Definitions / 11.87

11.46 Modular Coordination of Windows / 11.89

11.47 Window Sash Materials / 11.89

11.48 Glazing / 11.93

11.49 Window Types / 11.98

11.50 Windows in Wall-Panel Construction / 11.106

11.51 Mechanical Operators for Windows / 11.107

## DOORS

11.52 Traffic Flow and Safety / 11.109

11.53 Structural Requirements for Openings and Doors / 11.110

11.54 Ordinary Doors / 11.110

11.55 Fire and Smokestop Doors / 11.118

11.56 Revolving Doors / 11.120

11.57 Large Horizontally Sliding Doors / 11.120

11.58 Large Vertically Sliding Doors / 11.121

11.59 Large Swinging Doors / 11.122

11.60 Horizontally Hinged Doors / 11.123

11.61 Radiation-Shielding Doors / 11.123

## BUILDERS' HARDWARE

11.62 Selection of Hardware / 11.124

11.63 Effects of Codes and Regulations on Hardware / 11.125

11.64 Standards for Finishing Hardware / 11.125

11.65 Hinges and Butts / 11.126

11.66 Door-Closing Devices / 11.131

11.67 Locks, Latches, and Keys / 11.132

11.68 Window Hardware / 11.136

11.69 Inserts, Anchors, and Hangers / 11.137

11.70 Nails / 11.138

11.71 Screws / 11.139

11.72 Welded Studs / 11.141

11.73 Powder-Driven Studs / 11.143

11.74 Bolts / 11.144