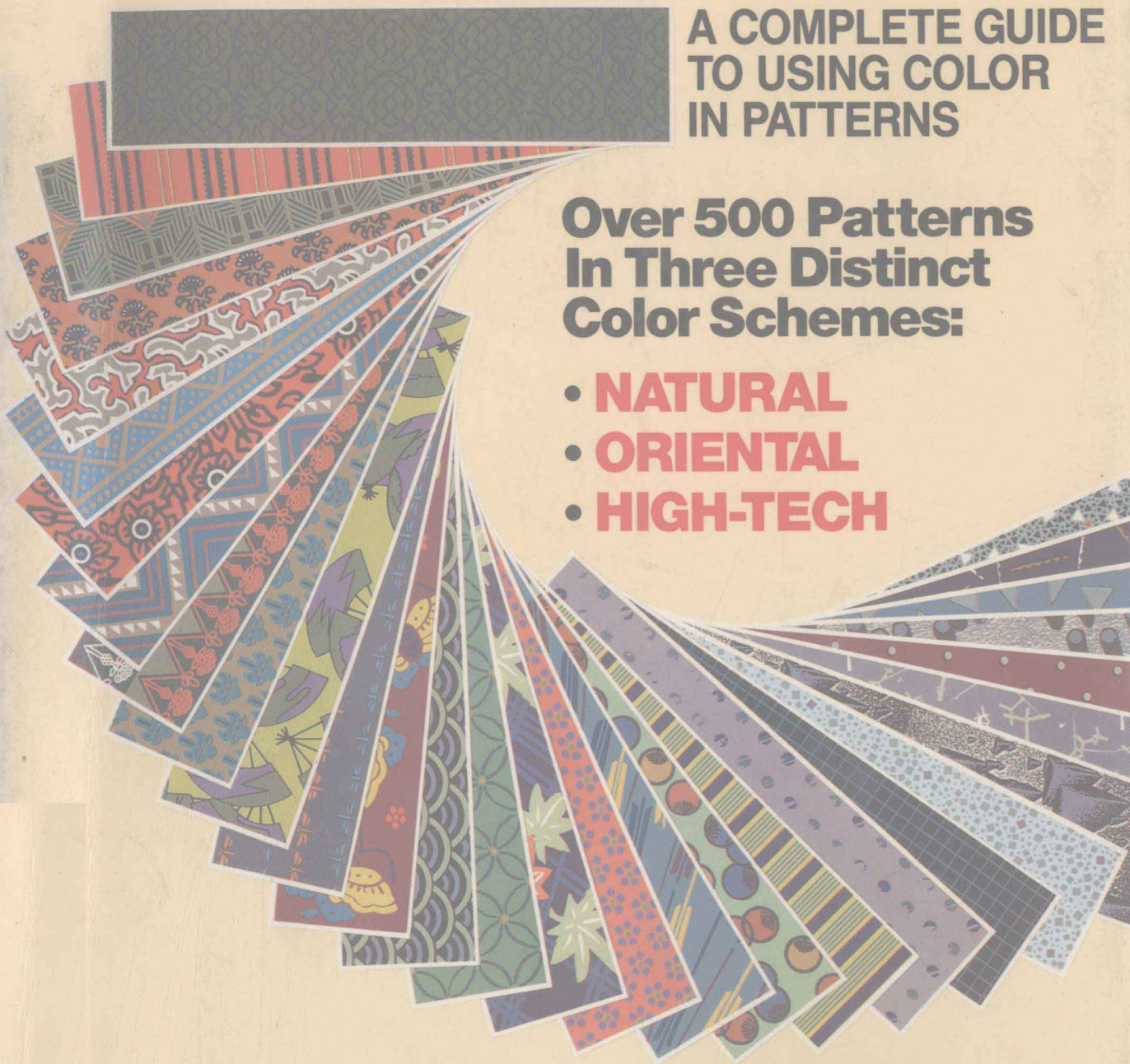


COLOR SOURCEBOOK

A COMPLETE GUIDE
TO USING COLOR
IN PATTERNS

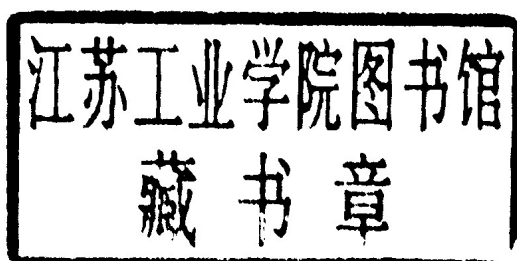
Over 500 Patterns
In Three Distinct
Color Schemes:

- **NATURAL**
- **ORIENTAL**
- **HIGH-TECH**



COLOR SOURCEBOOK

A COMPLETE GUIDE
TO USING COLOR
IN PATTERNS



Rockport Publishers ♦ Rockport, Massachusetts

Distributed by North Light Books
Cincinnati, Ohio

Copyright©1989 by Rockport
Publishers, Inc.

All rights reserved. No part of
this work may be reproduced in
any form without written
permission of the publisher.

First published in the United States
of America by:

Rockport Publishers, Inc.

P.O. Box 396

5 Smith Street

Rockport, Massachusetts 01966

Telephone: (508) 546-9590

Telex: 5106019284

Fax: (508) 546-7141

ISBN: 0-935603-28-X

Distributed in the U.S. and Canada

by: North Light Books, an

Imprint of F & W Publications

1507 Dana Avenue

Cincinnati, Ohio 45207

Telephone: 1-800-289-0963

Fax: (513) 531-4744

CONTENTS

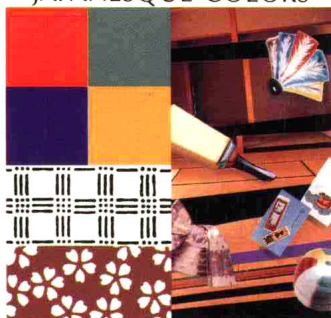
ETHNIC COLORS



NATURAL COLORS

- Image criterion & pattern table 6
- Color bands showing coordination of basic colors and their applications to patterns (No. 1-160) 8

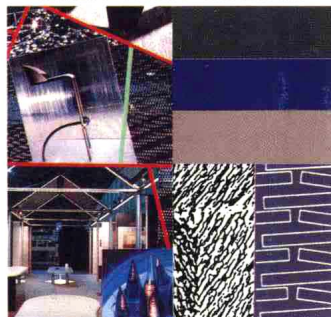
JAPANESE COLORS



ORIENTAL COLORS

- Image criterion & pattern table 40
- Color bands showing coordination of basic colors and their applications to patterns (No. 161-320) 42

HIGH-TECH COLORS



HIGH-TECH COLORS

- Image criterion & pattern table 74
- Color bands showing coordination of basic colors and their applications to patterns (No. 321-480) 76

PREFACE

COLOR SOURCEBOOK is a comprehensive guide to color coordination and balance in pattern, providing a practical insight into the nature and application of color combination. Because color is such an intimate part of everyday life, we never think twice about describing colors as being "somber", "festive", "cold", "cozy", or even "crazy". What this means is that no color exists for us in isolation. Without a frame of reference, usually other related colors, any color is essentially meaningless.

This manual is based on the concept that color harmonies and discords are culturally directed, and that by thinking in terms of cultural criteria the designer can get a head start in effective color design. The color and pattern combinations are arranged here under the headings Natural, Oriental and High-tech, creating a framework for the designer to work within, a forum for the comparison and study of trends in color and pattern. The concepts developed in this book continue, in COLOR SOURCEBOOK II, with the color coordinations Pop, Retro-modern and Postmodern.

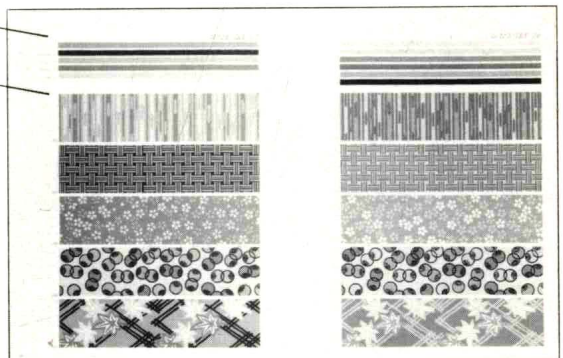
Applications to patterns—

Each page presents five examples of patterns which were developed using two or more of the color bars at the top of the page. By studying and experimenting with these patterns, you can see how any two or more colors work together to create different effects. The same coordinated set of colors can say vastly different things depending on how they are assembled and applied. Use these applications as a "casebook" to help you arrive at effective color schemes more quickly, accurately and creatively.

COORDINATION OF
BASIC COLORS

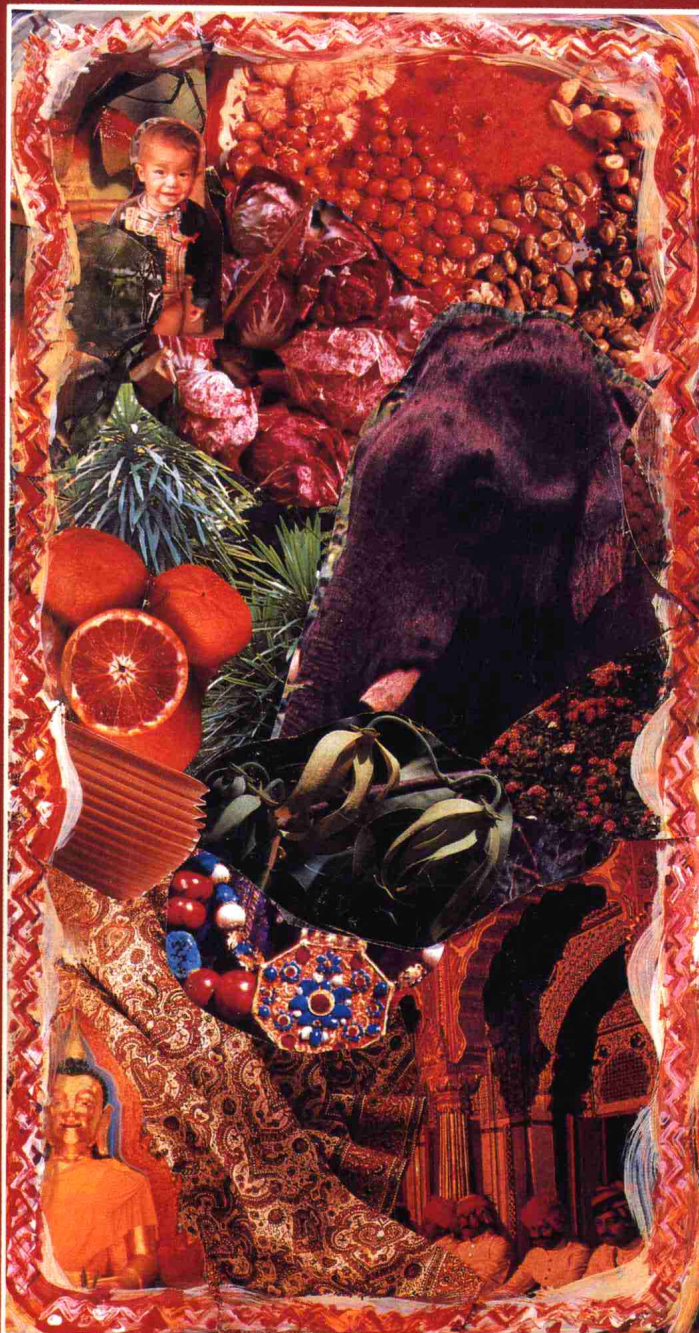
APPLICATIONS TO
PATTERNS

Examples of coordination of color in pattern. The number of different colors can be increased or reduced without changing the image of the pattern.



NATURAL

■ Image Criterion



Natural: These color combinations derive from naturally available dyes and naturally colorful materials. The tones are more subtle than those found in an urban palette of bright, simple colors. Here is a gentle wealth of understated hues and regular patterns that can be used to create a natural, restful fabric, background or environment.



■ Table of Patterns



NATURAL 1

Y30 C90 BL30

Y80 M80

Y100 M20 BL30

BL100

Y20 M80 C60



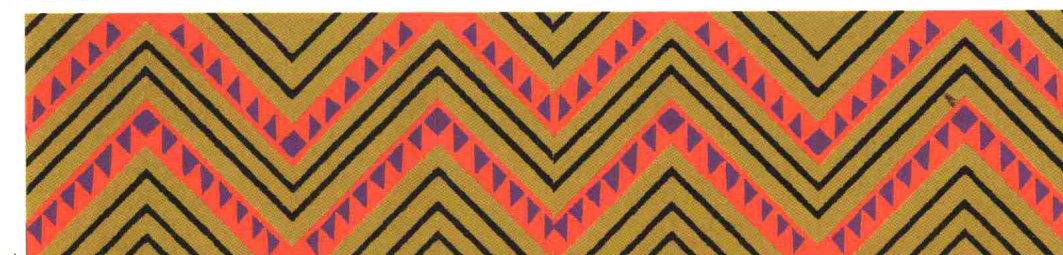
1



2



3



4



5

NATURAL 2

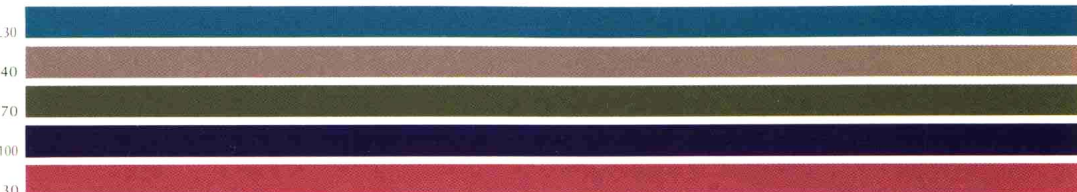
Y30 C90 BL30

Y50 M40 C40

Y80 M50 C70

Y40 M100 C100

Y30 M70BL30



6



7



8



9



10

Y 30 C 90 BL 30
M 80 C 80
Y 60 M 40 C 50
Y 80 M 90 C 100
Y 100 M 90 C 40



11



12



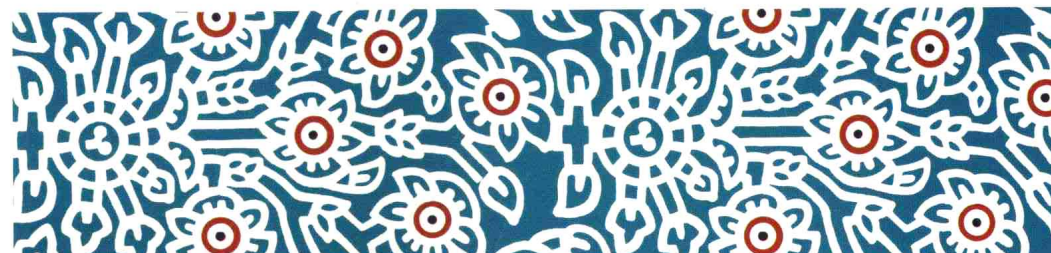
13



14



15



Y20 BL80
Y60 M50 C40
Y60 M100 C70
Y50 C90
M100 C90 BL70



16



17



18



19

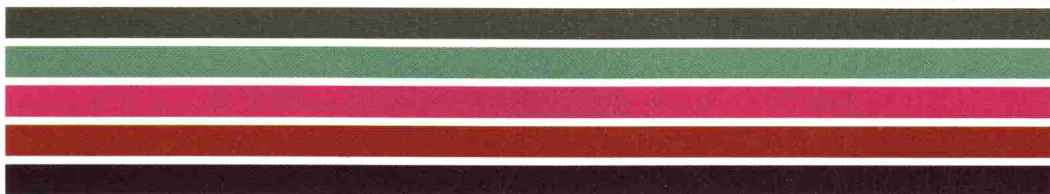


20



NATURAL 5

Y20 BL80
Y50 C50 BL30
Y20 M90 C20
Y100 M90 C40
M60 BL90



21



22



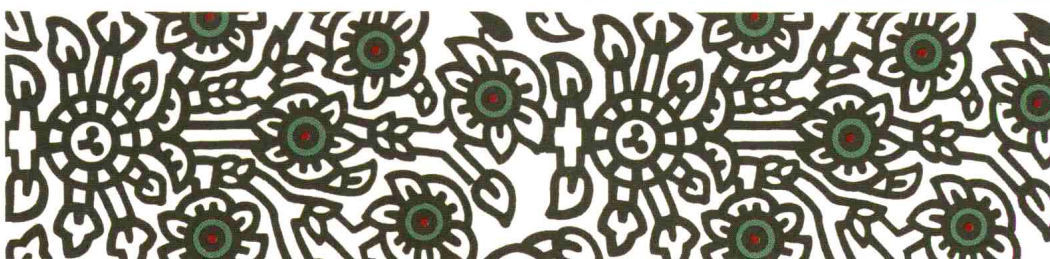
23



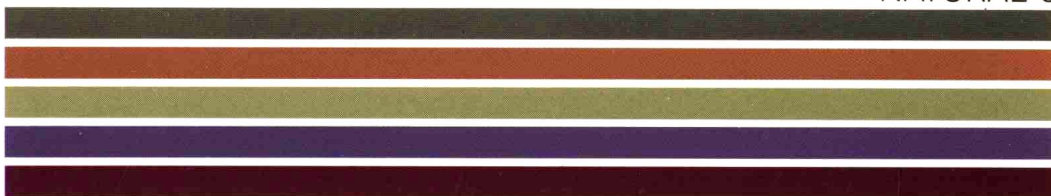
24



25



Y20 BL80
Y80 M70 C40
Y50 BL50
Y30 M80 C80
M100 BL80



26



27



28



29



30



Y60 M100 C70

M100 C80 BL60

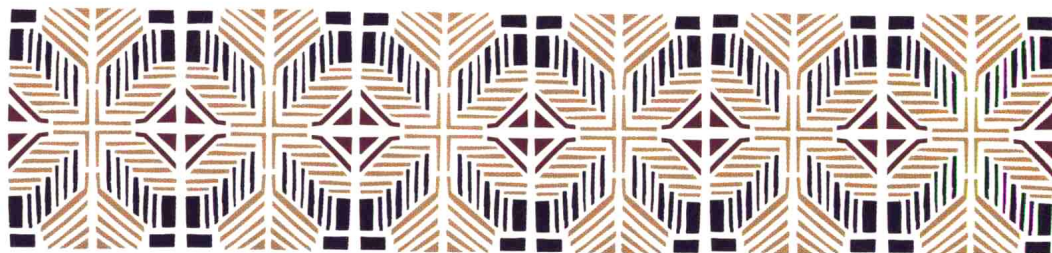
Y80 M70 C70

Y10 C50

Y50 M30 BL30



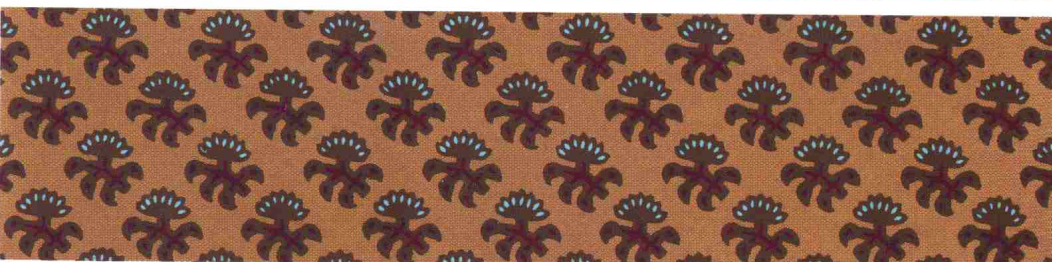
31



32



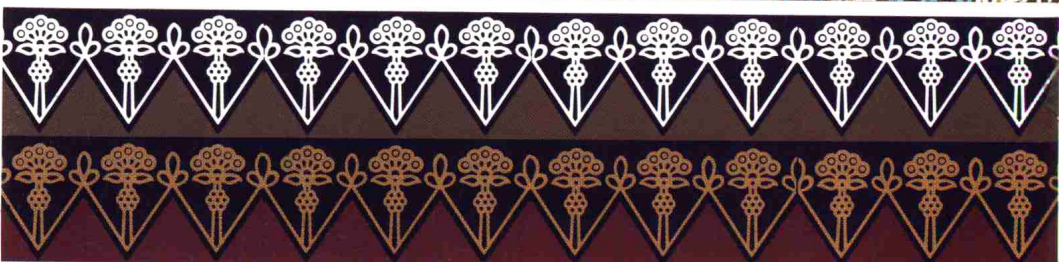
33



34



35



Y60 M100 C70

Y80 M80 C90

Y30 C10 BL40

Y60 M60 C100

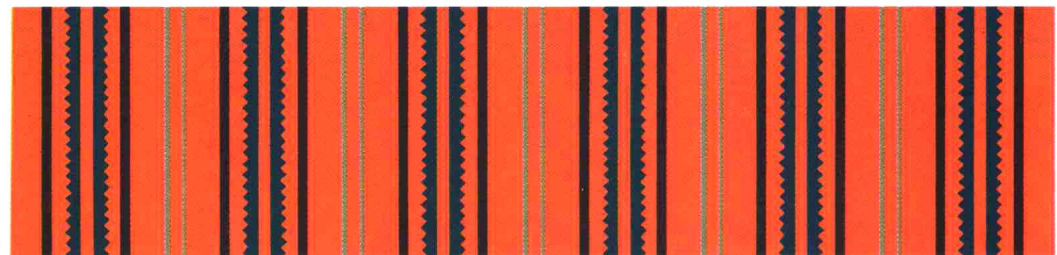
Y80 M70



36



37



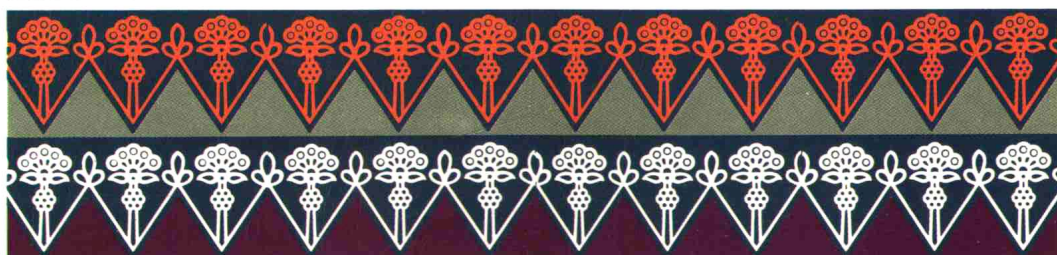
38



39



40



Y60 M100 C70

Y30 M70 C80

Y80 M60 C20

M100 C80 BL60

Y60 M40 C40

41

42

43

44

45

