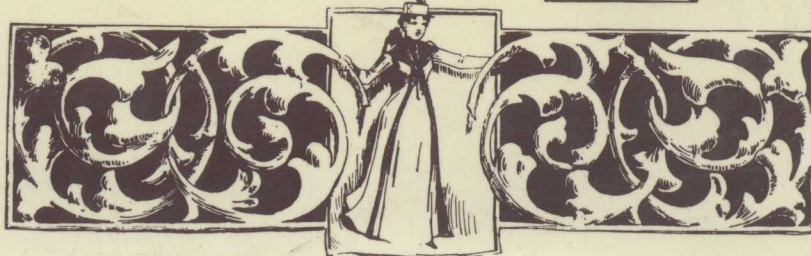
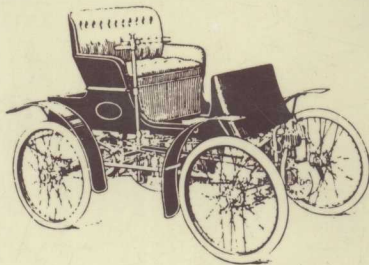
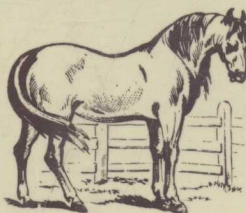


# CLASSIC CLIP ART

THOUSANDS OF COPYRIGHT-FREE IMAGES



¥ 236.00



# CLASSIC CLIP ART





# CLASSIC CLIP ART



CHB

GLORIA HALE BOOKS

NEW YORK • AVENEL



Copyright © 1996 by  
Random House Value Publishing, Inc.  
All rights reserved under International and  
Pan-American Copyright Conventions.

No part of this book may be reproduced or transmitted in any form or by any means  
electronic or mechanical including photocopying, recording, or by any information  
storage and retrieval system, without permission in writing from the publisher.

This 1996 edition is published by Glorya Hale Books,  
an imprint of Random House Value Publishing, Inc.,  
40 Engelhard Avenue, Avenel, New Jersey 07001.

Random House  
New York • Toronto • London • Sydney • Auckland

Printed and bound in the United States of America

**Library of Congress Cataloging-in-Publication Data**  
Classic clip art / edited by Glorya Hale.

p. cm.

ISBN 0-517-14883-8

1. Decoration and ornament. 2. Clip art.

I. Hale, Glorya.

NK1530.C57 1996

741.6—dc20 95-43570

CIP

8 7 6 5 4 3 2 1



## INTRODUCTION

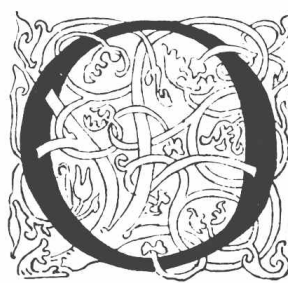
*Classic Clip Art* is an unusual and invaluable collection of thousands of quality, copyright-free, clip-art images for graphic designers, artists, and desktop publishers. These images were taken from the rare 1900 edition of the American Type Founders Cut Book, a catalog for printers. The American Type Founders were photoengravers who made metal relief plates for letterpress printing. These plates were used primarily for reproducing illustrations and were called cuts. Today, illustrations of all kinds are printed so efficiently by modern offset lithography that photoengraving has only limited and special applications. The cuts, however, are so varied that they provide marvelous clip-art images.

Until relatively recently, enlarging an illustration was a laborious and time-consuming process involving the use of a camera lucida or a light chamber based on the same principle of using a prism or mirrors to cause a virtual image of a piece of artwork to appear, as if projected, upon a plane surface so that an outline and details can be traced. Consequently, cuts were available in a variety of point sizes. Although today designers can easily change the size of an illustration, many of the images in this book are repeated in different sizes because it can be helpful to see immediately how an alphabet or an illustration, as they were in the original edition, looks in small and large sizes.

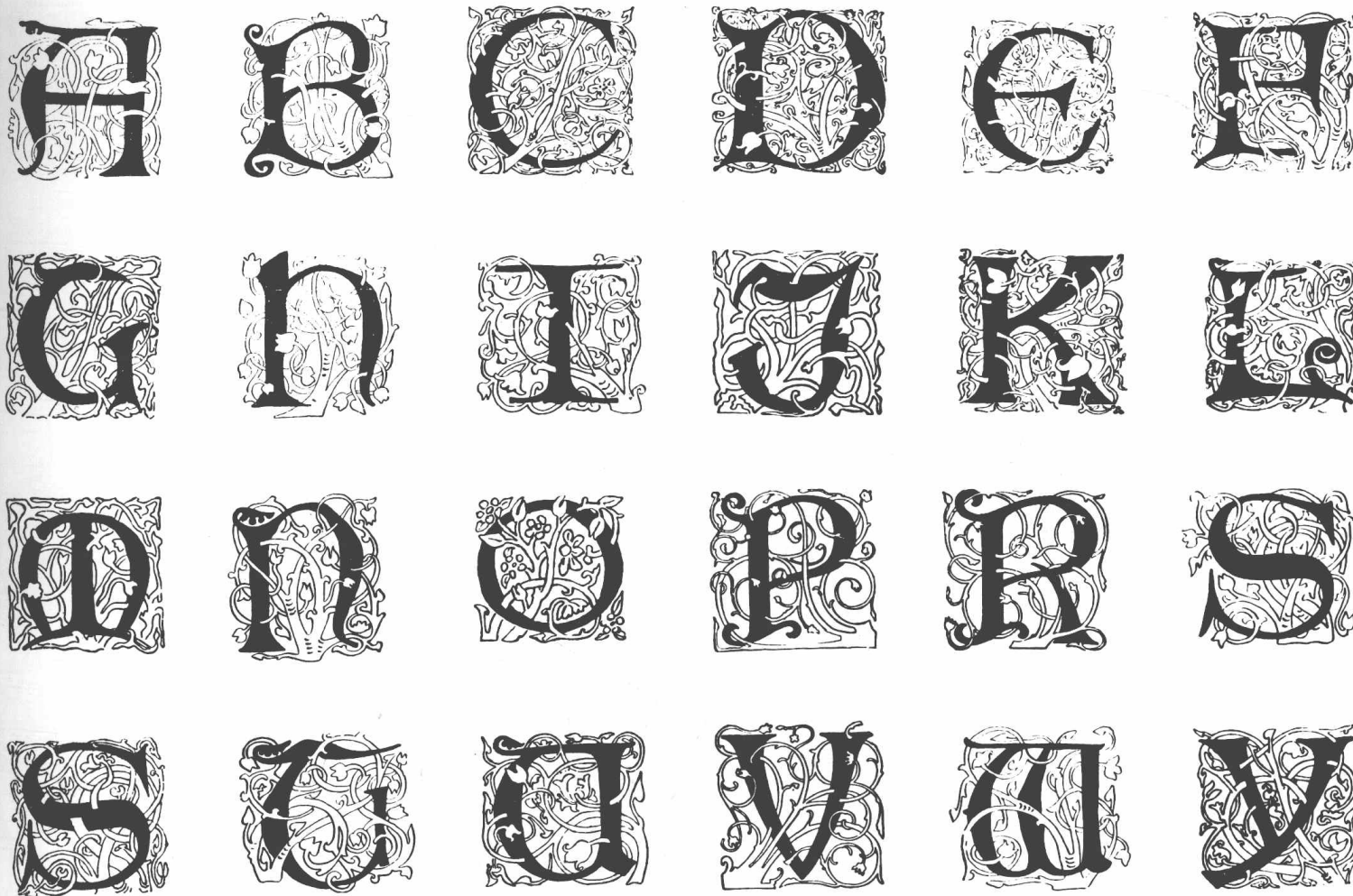
Since the American Type Founders' customers were small and large establishments that printed everything from menus, letterheads, and advertisements to brochures, magazines, and books, the company produced cuts for an enormous range of subject matter. The thousands of images in this extraordinary collection of clip art therefore include more than eighty alphabets, as well as page embellishments, head and tail pieces, illustrated initials, silhouettes, trade cuts, chapbook art and directors, Christmas and Easter designs, and illustrations of ballet dancers, golfers, bowlers, hoboes, baseball players, Kate Greenaway's mignonettes, babies, trains, ships, fruit, flowers, poultry, cows, sheep, horses, fish, and a variety of birds and wild animals.

This is, indeed, a comprehensive sourcebook that you will enjoy using and will refer to again and again.

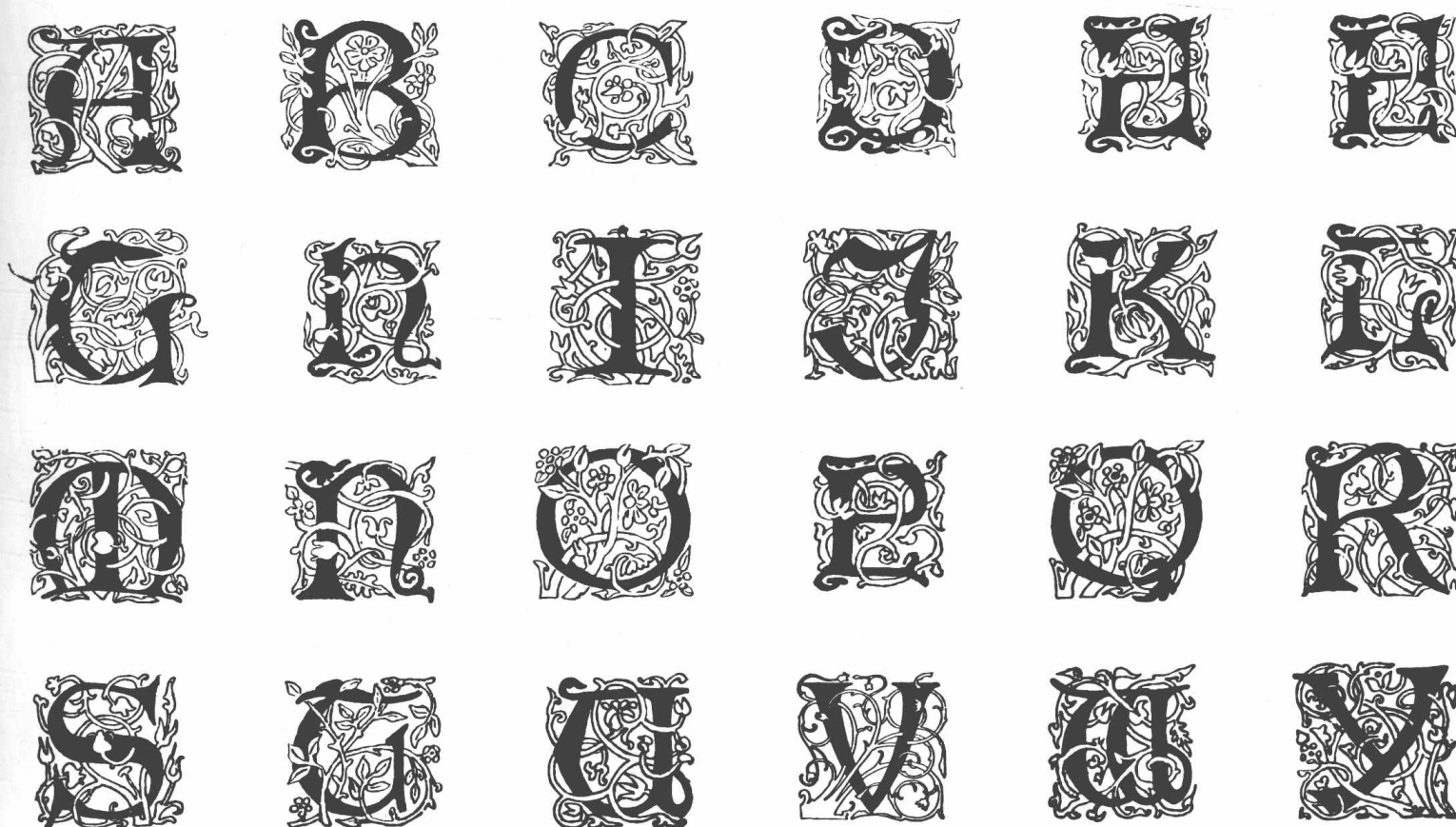




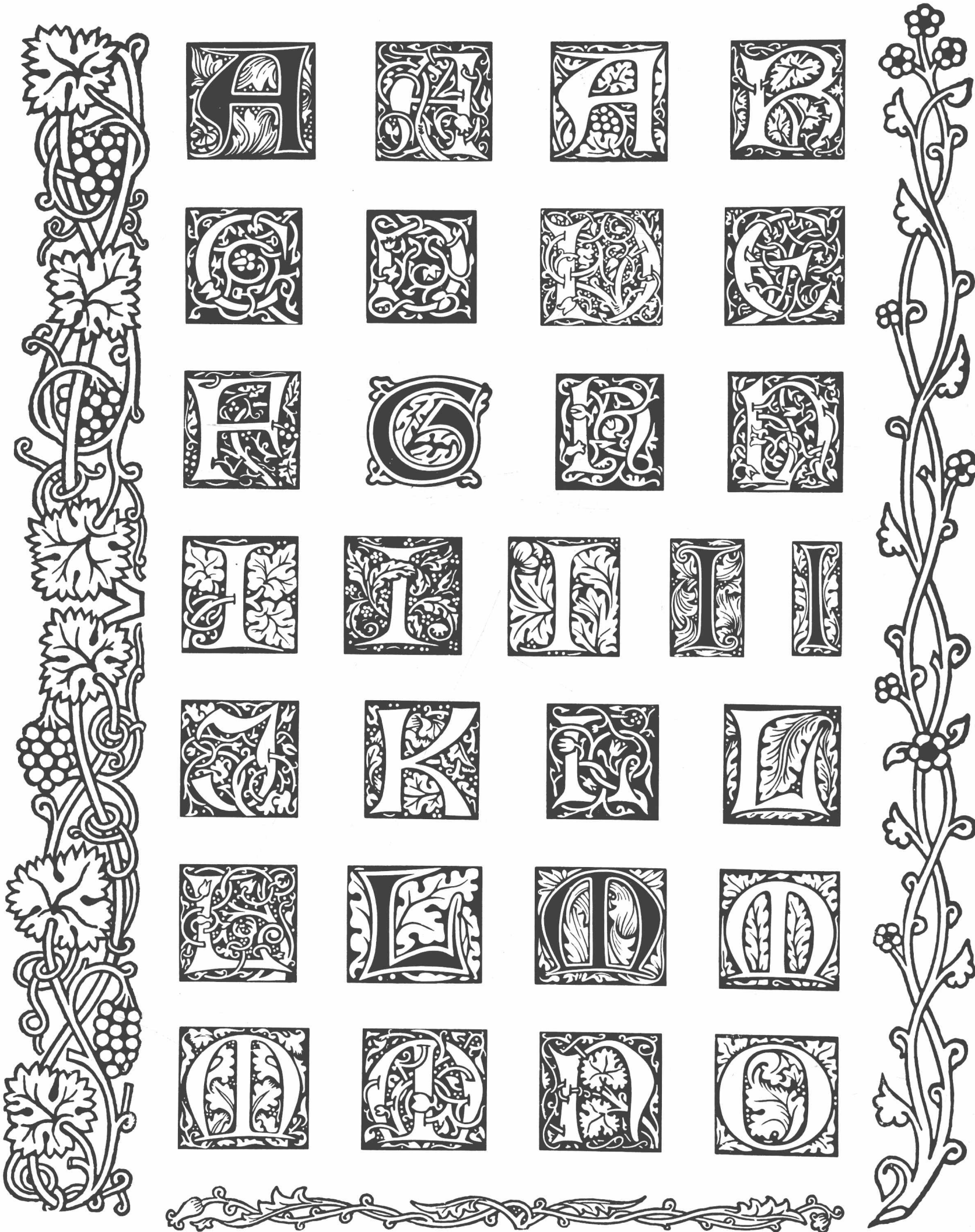
## MORRIS SERIES, 77



## MORRIS SERIES, 78









JENSON SERIES, 80



JENSON SERIES, 82

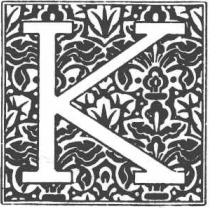
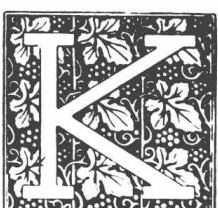
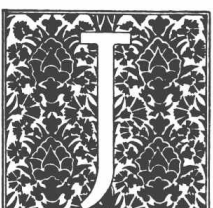
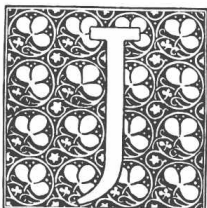
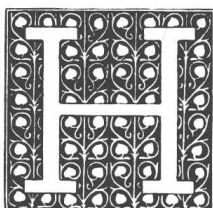
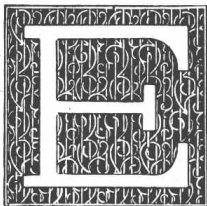
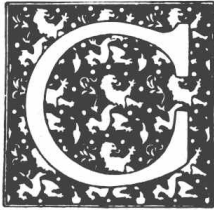
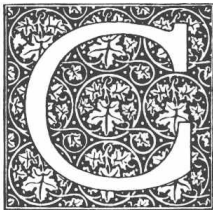


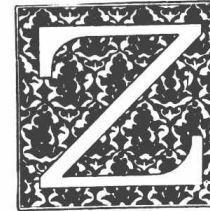
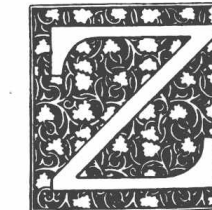
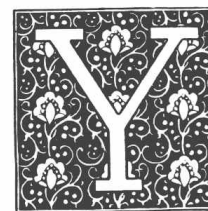
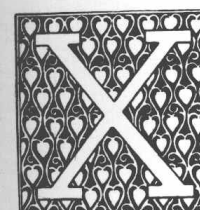
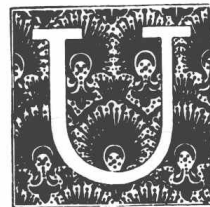
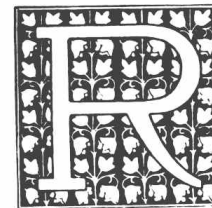
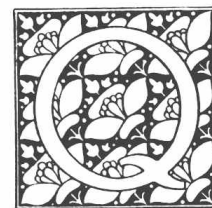
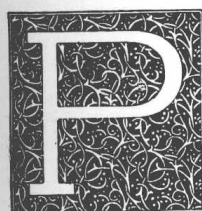
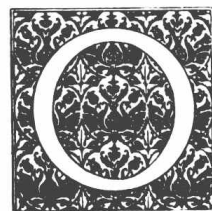
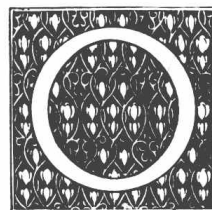
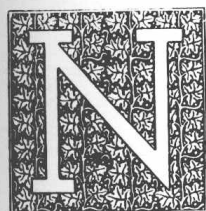
The letters of the alphabet not shown are uniform in style with those of Jenson Series 80

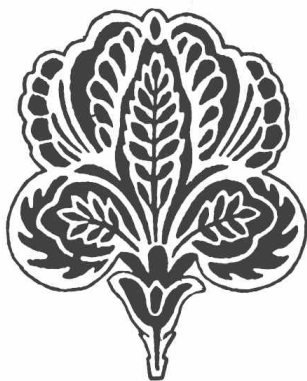
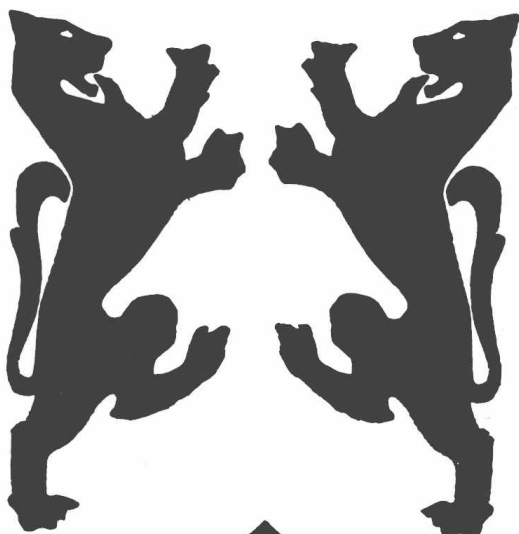
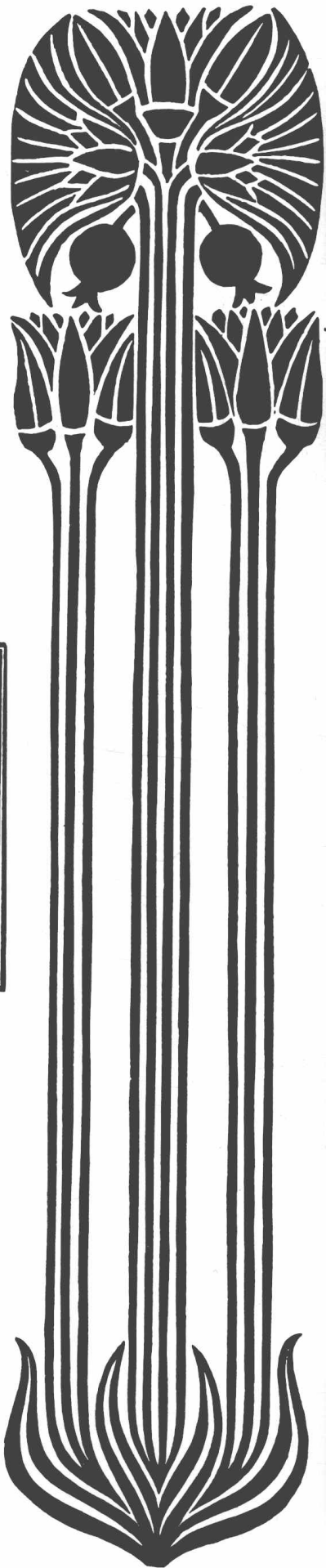
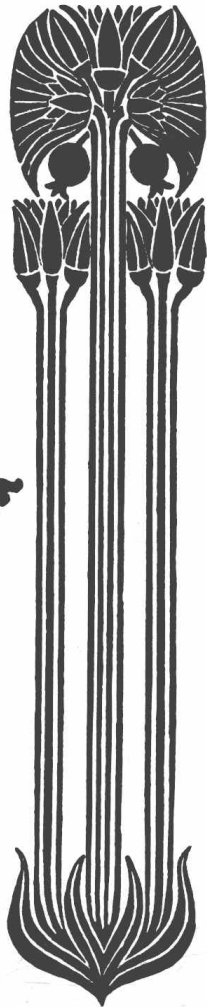
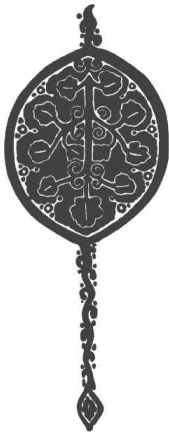




WAYSIDE SERIES, 1

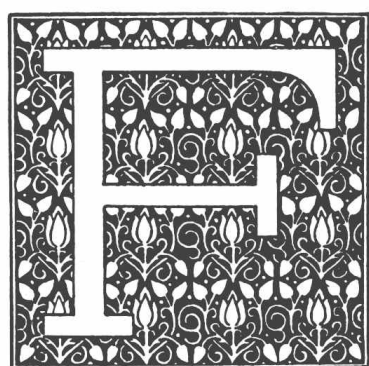
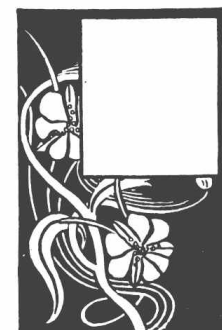
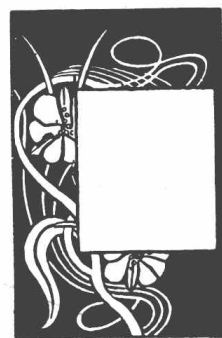
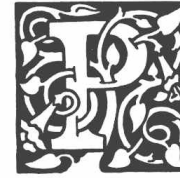
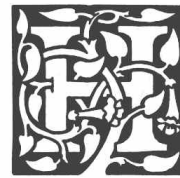




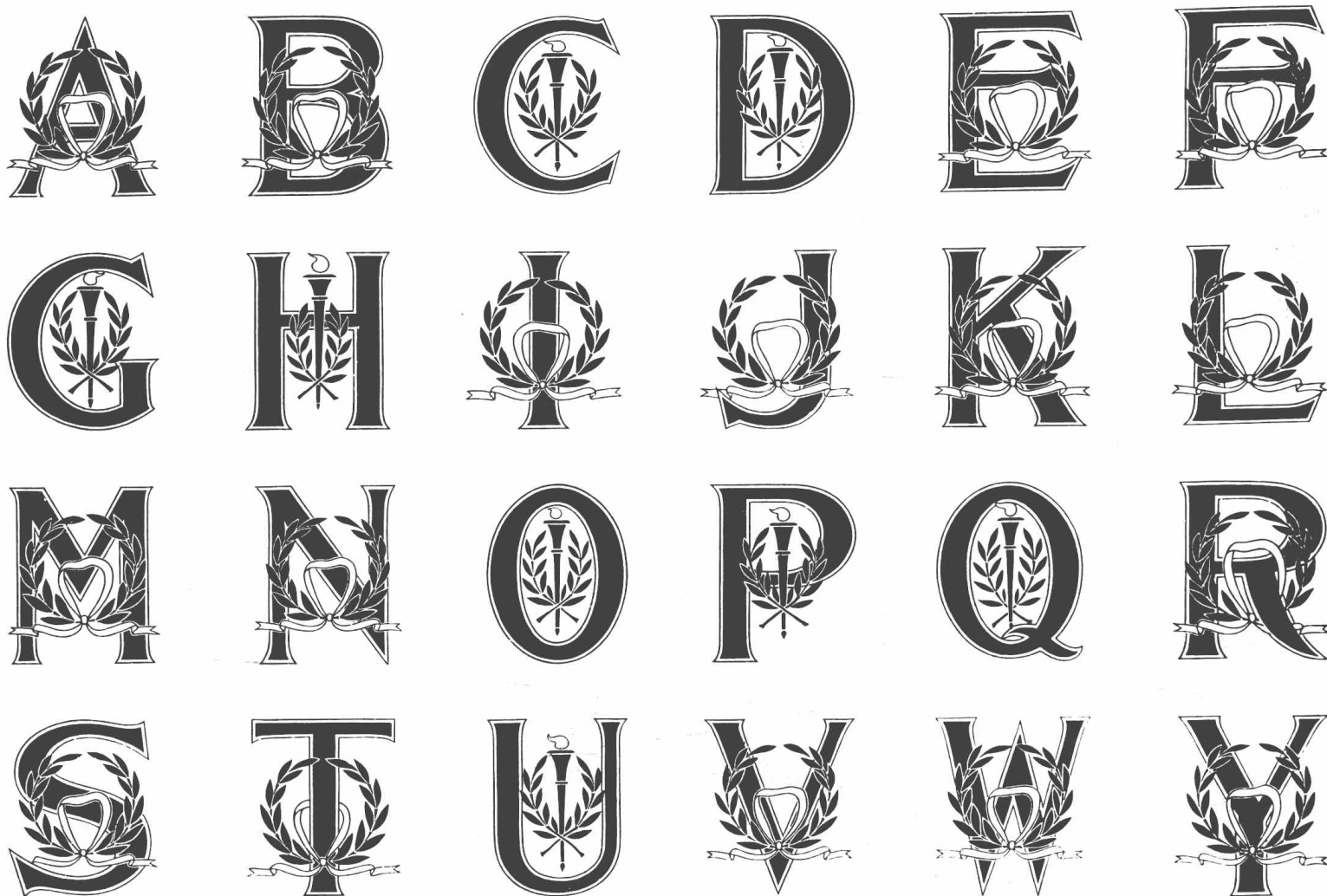




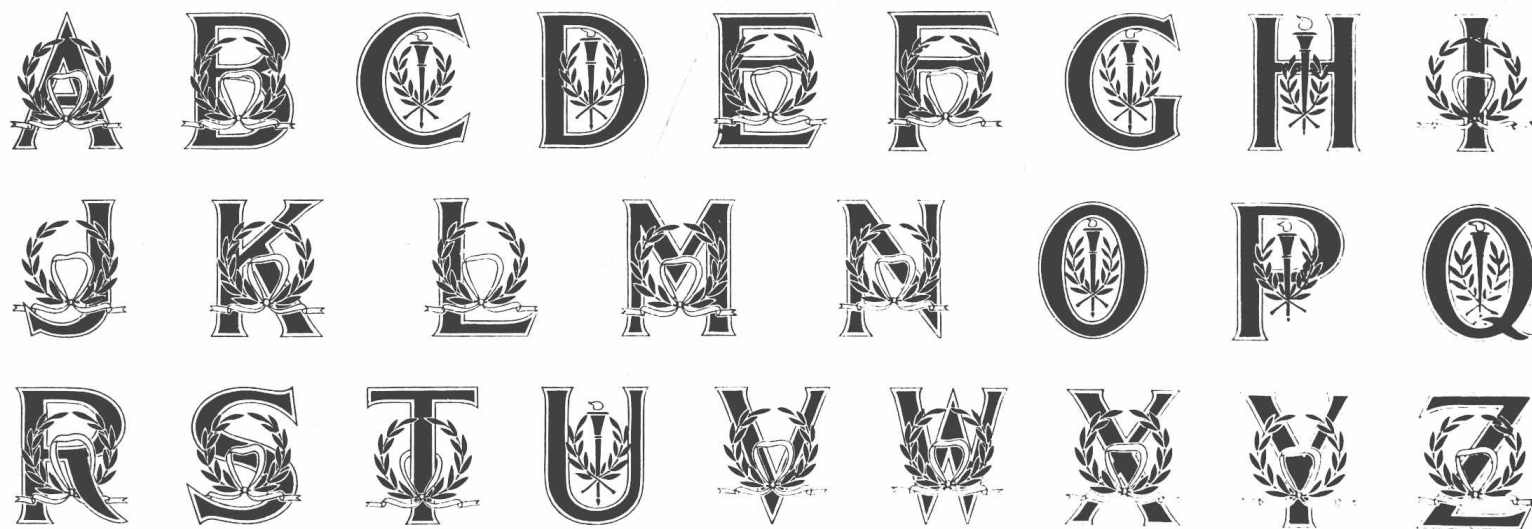
## HAPGOOD SERIES, 1

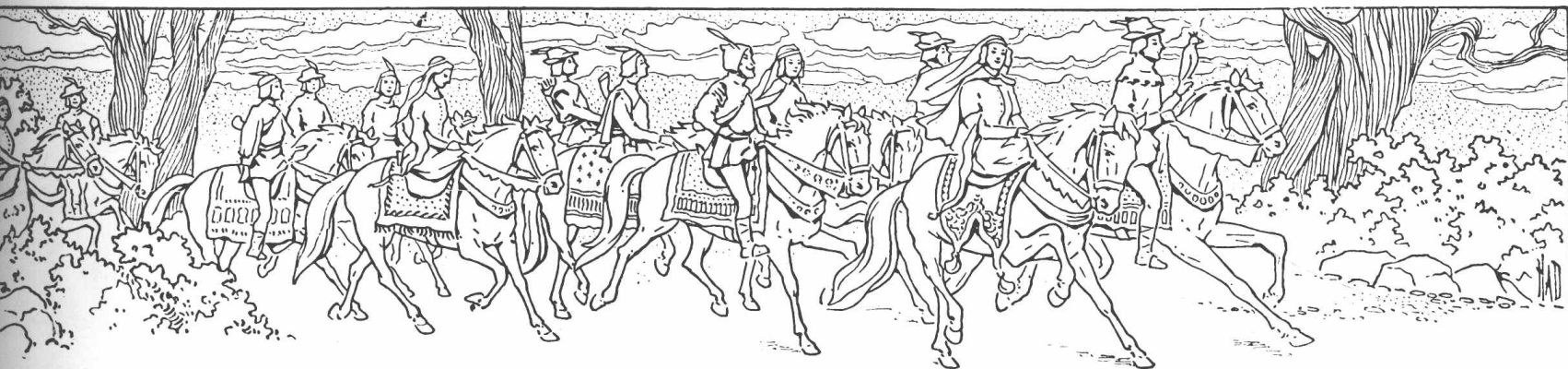


## 72 POINT EMPIRE SERIES



## 48 POINT EMPIRE SERIES

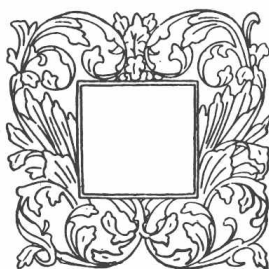
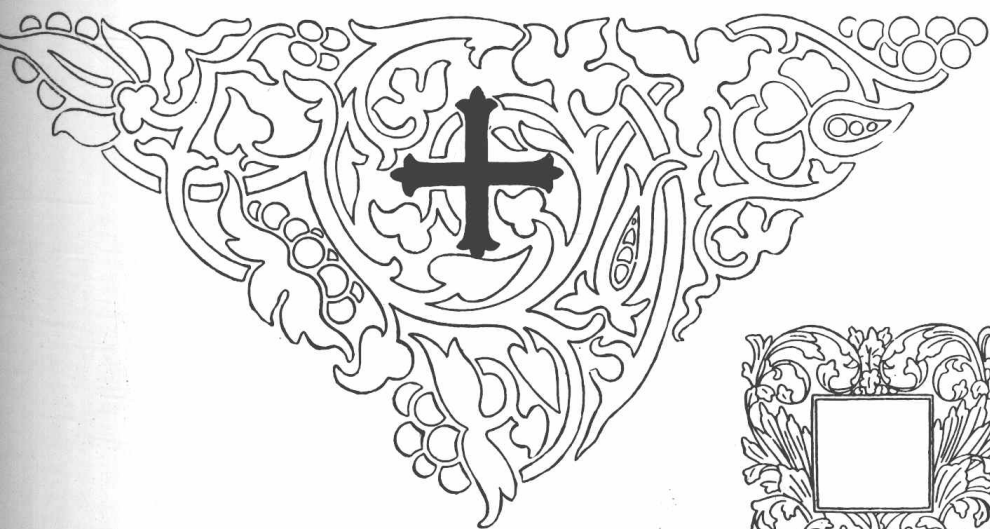
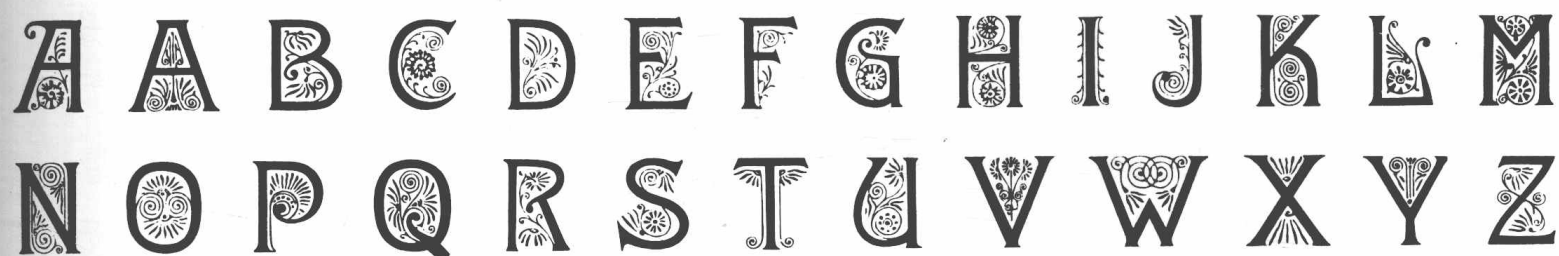




IPSEN SERIES, 1



IPSEN SERIES, 2





## 54 POINT BRADLEY SERIES

