

Geography of China



FOREIGN LANGUAGES PRESS PEKING

GEOGRAPHY OF CHINA

FOREIGN
LANGUAGES
PRESS



PEKING



1972

GEOGRAPHY OF CHINA

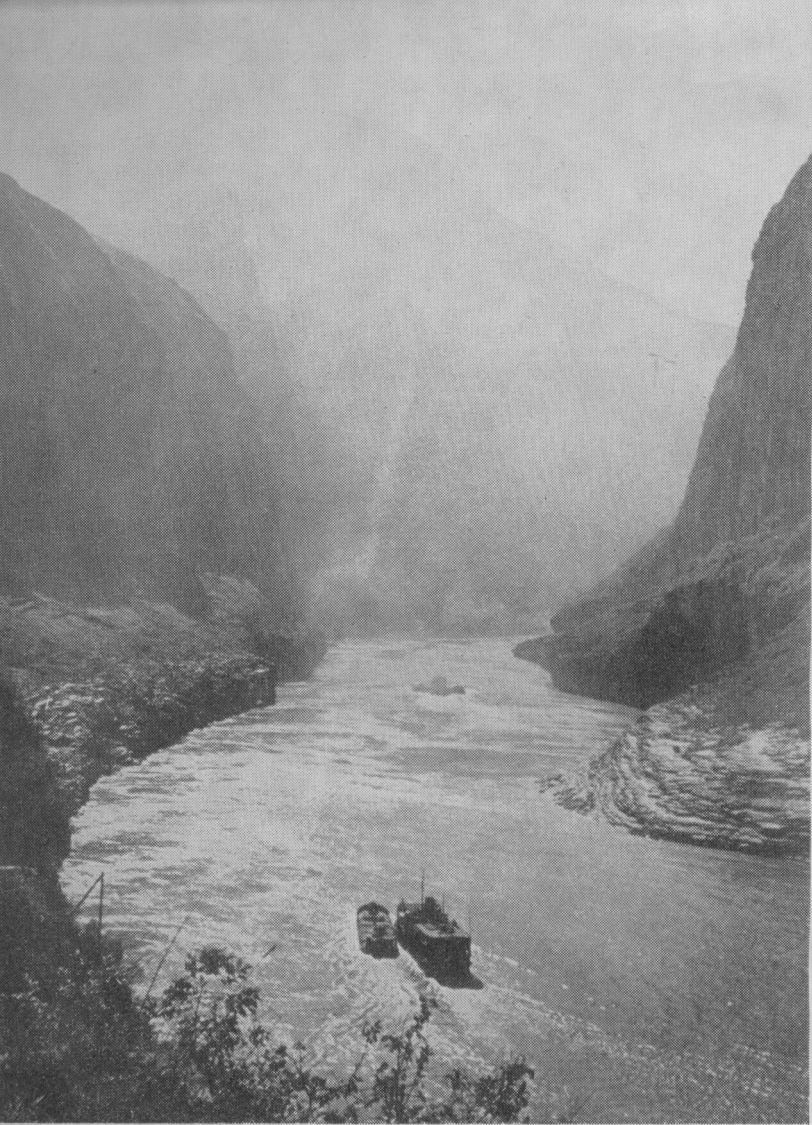
Publisher's Note

In this booklet are reprinted six articles from *China Reconstructs*. They are the first part of a *China Reconstructs* series on the geography of China.

Printed in the People's Republic of China



The Great Wall at Pataling, north of Peking



Through the Yangtze River Gorges

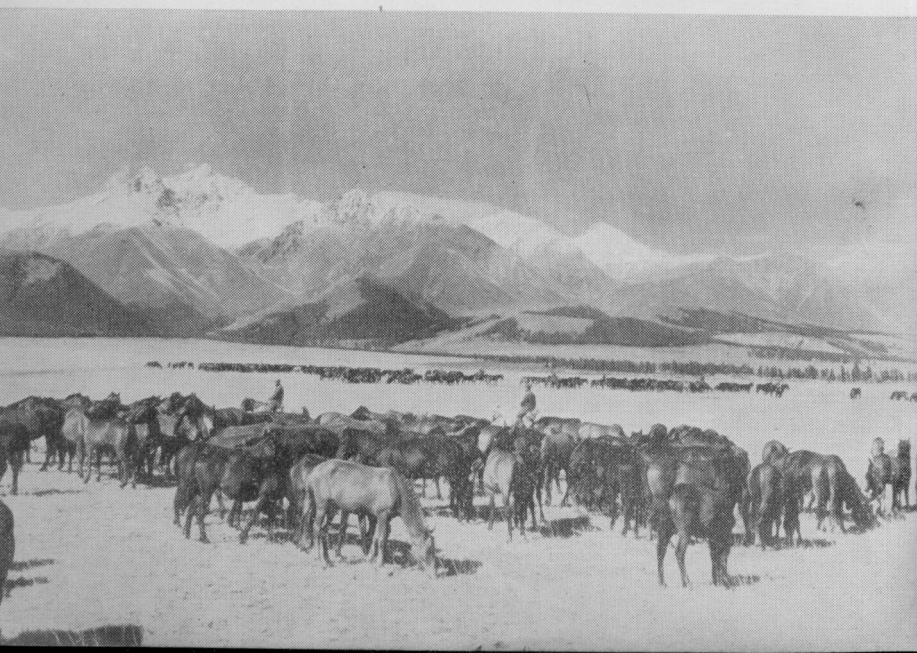
The Yangtze River Bridge at Nanking





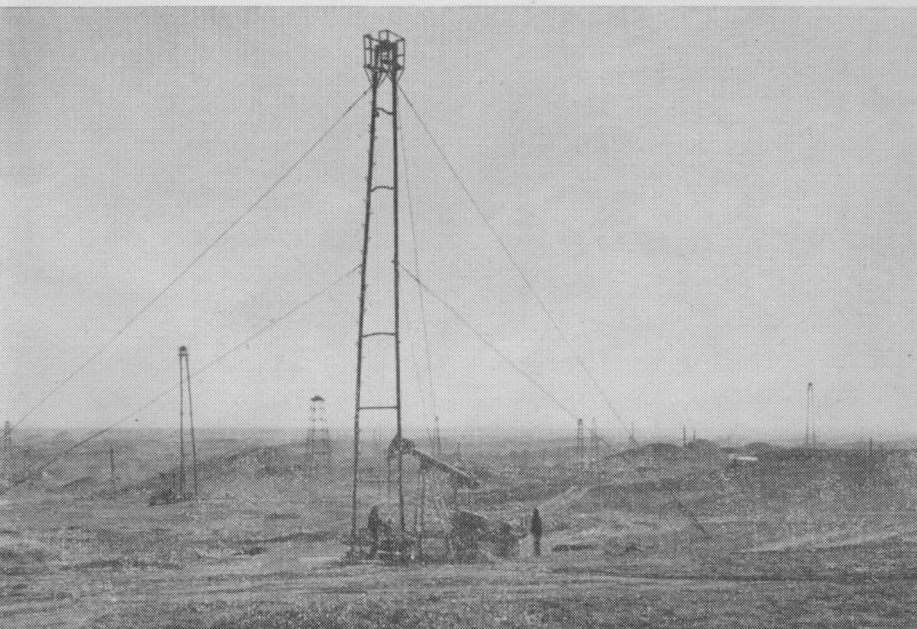
The city of Lbsa on the Chingbai-Tibet Plateau

Horses grazing on a Tienshan mountain plain





Prospecting team in the Kunlun Mountains
Construction in the Tsaidam Basin, Chinghai Province





Inner Mongolia grassland





Spillway on the Haibo River

*Terraced fields on
a loess plateau*

*River and canal network in
the Yangtze River Delta*



*Harvesting wheat on the
“Great Northern Wilder-
ness” of northeast China*





Tree shelters in Fuyu County beside the Sunghua River

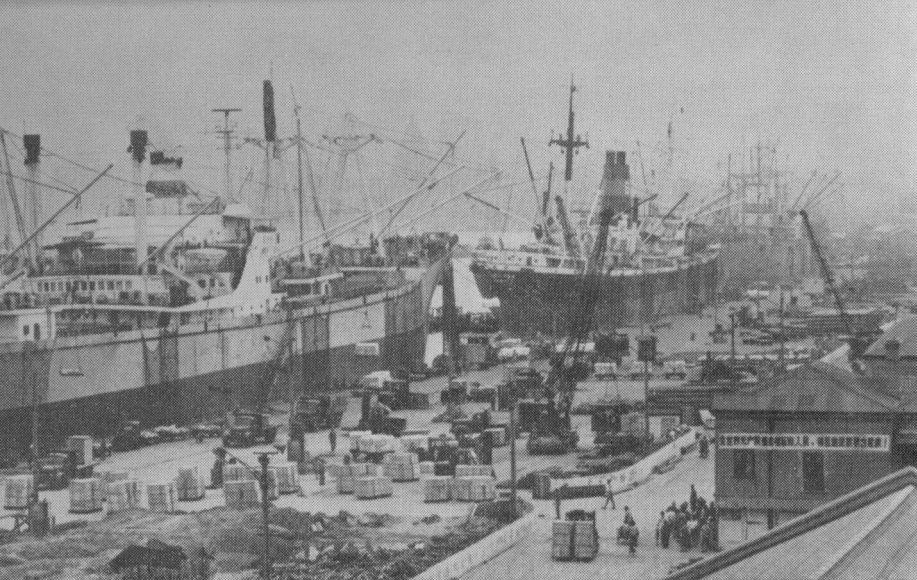




*Timber rafts floating downstream
in a south China forest area*



Banana harvesting in the Pearl River Delta



Wharf at the port of Shanghai

Mending nets. A tortoise-fishing team on the Sisba Islands, China's outpost on the South China Sea



Contents

SOME BASIC FACTS	1
RICH NATURAL RESOURCES	6
MINORITY NATIONALITIES	14
COASTS, ISLANDS AND HARBOURS	22
RIVERS	28
MOUNTAINS	37