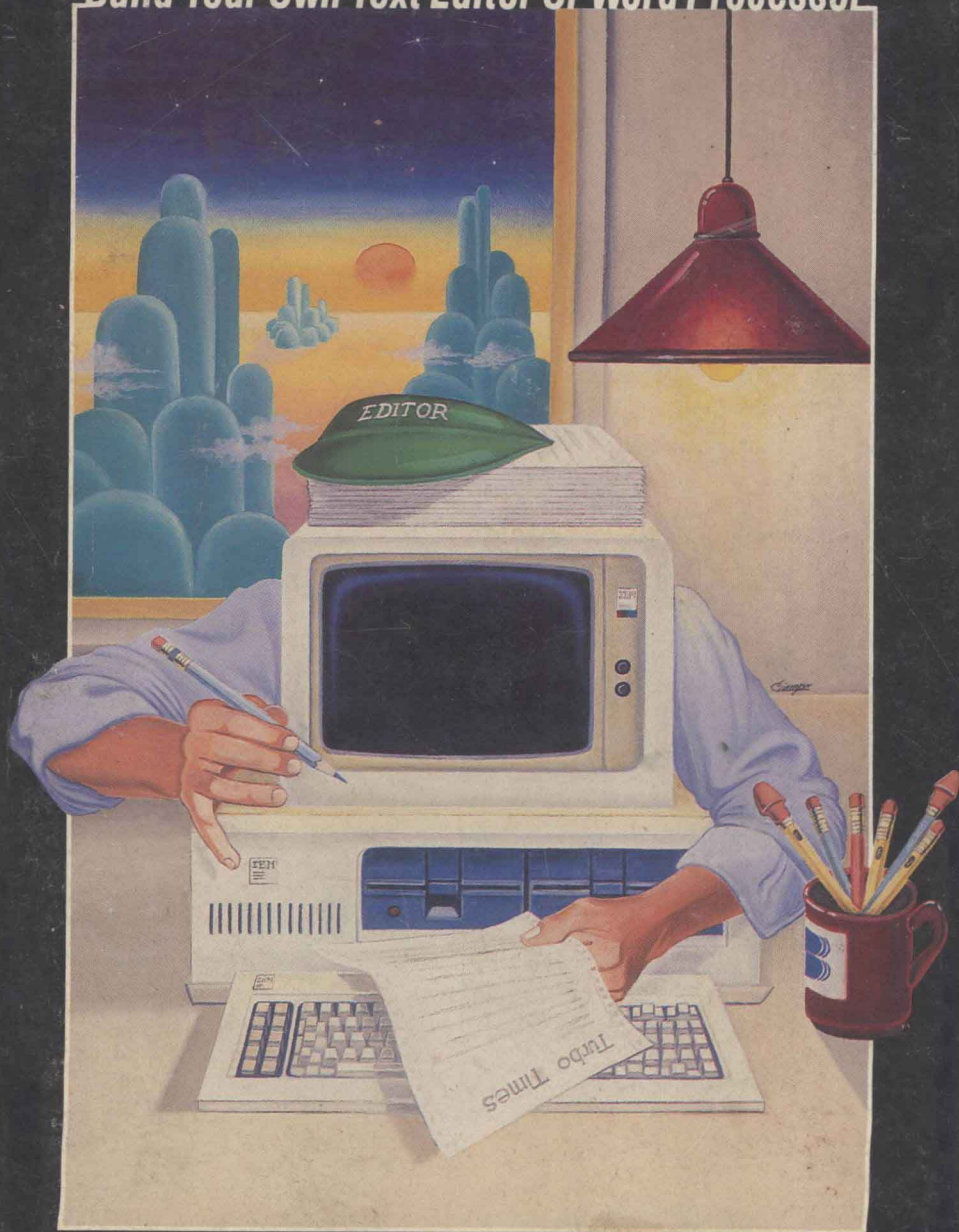


TURBO **EDITOR TOOLBOX**

Build Your Own Text Editor Or Word Processor



**60 DAY
MONEY-BACK
GUARANTEE**

CATALOG OF BORLAND PRODUCTS

As of August 1, 1985



BORLAND

I N T E R N A T I O N A L

4585 Scotts Valley Drive
Scotts Valley, CA 95066

Available at better dealers nationwide. Call (800) 556-2283 for the dealer nearest you. To order by Credit Card call (800) 255-8008, CA (800) 742-1133

SIDEKICK[®] VERSION 1.5

INFOWORLD'S SOFTWARE PRODUCT OF THE YEAR

Whether you're running WordStar[™], Lotus[™], dBase[™], or any other program, SIDEKICK puts all these desktop accessories at your fingertips. Instantly.

A full-screen WordStar-like Editor You may jot down notes and edit files up to 25 pages long.

A Phone Directory for your names, addresses and telephone numbers. Finding a name or a number becomes a snap.

An Autodialer for all your phone calls. It will look up and dial telephone numbers for you. (A modem is required to use this function.)

A Monthly Calendar functional from year 1901 through year 2099.

A Datebook to remind you of important meetings and appointments.

A full-featured Calculator ideal for business use. It also performs decimal to hexadecimal to binary conversions.

An ASCII Table for easy reference.



All the SIDEKICK windows stacked up over Lotus 1-2-3. From bottom to top: SIDEKICK'S "Menu Window," ASCII Table, Notepad, Calculator, Datebook, Monthly Calendar and Phone Dialer



Here's SIDEKICK running over Lotus 1-2-3. In the SIDEKICK Notepad you'll notice data that's been imported directly from the Lotus screen. In the upper right you can see the Calculator.

The Critics' Choice

"In a simple, beautiful implementation of WordStar's[™] block copy commands, SIDEKICK can transport all or any part of the display screen (even an area overlaid by the notepad display) to the notepad."

—Charles Petzold, PC MAGAZINE

"SIDEKICK deserves a place in every PC."

—Garry Ray, PC WEEK

"SIDEKICK is by far the best we've seen. It is also the least expensive."

—Ron Mansfield, ENTREPRENEUR

"If you use a PC, get SIDEKICK. You'll soon become dependent on it."

—Jerry Pournelle, BYTE

**SIDEKICK IS AN UNPARALLELED BARGAIN AT ONLY \$54.95 (copy-protected)
OR \$84.95 (not copy-protected)**

Minimum System Configuration: SIDEKICK is available now for your IBM PC, XT, AT, PCjr., and 100% compatible microcomputers. The IBM PC jr. will only accept the SIDEKICK not copy-protected version. Your computer must have at least 128K RAM, one disk drive and PC-DOS 2.0 or greater. A Hayes[™] compatible modem, IBM PCjr.[™] internal modem, or AT&T[®] Modem 4000 is required for the autodialer function.



SideKick and SuperKey are registered trademarks of Borland International, Inc. dBase is a trademark of Ashton-Tate. IBM is a registered trademark and PCjr. is a trademark of International Business Machines Corp. AT&T is a registered trademark of American Telephone & Telegraph Company. Infoworld is a trademark of Popular Computing, Inc., a subsidiary of CW Communications Inc. Lotus 1-2-3 is a trademark of Lotus Development Corp. WordStar is a trademark of Micropro International Corp. Hayes is a trademark of Hayes Microcomputer Products, Inc.



INCREASE YOUR PRODUCTIVITY BY 50% OR YOUR MONEY BACK

SuperKey turns 1,000 keystrokes into 1!

Yes, SuperKey can *record* lengthy keystroke sequences and play them back at the touch of a single key. Instantly. Like Magic.

Say, for example, you want to add a column of figures in 1-2-3. Without SuperKey you'd have to type seven keystrokes just to get started. ["shift-@-s-u-m-shift-("]. With SuperKey you can turn those 7 keystrokes into 1.

SuperKey keeps your 'confidential' files. . .CONFIDENTIAL!

Time after time you've experienced it: anyone can walk up to your PC, and read your confidential files (tax returns, business plans, customer lists, personal letters. . .).

With SuperKey you can encrypt any file, even while running another program. As long as you keep the password secret, only YOU can decode your file. SuperKey implements the U.S. government Data Encryption Standard (DES).

SuperKey helps protect your capital investment.

SuperKey, at your convenience, will make your screen go blank after a predetermined time of screen/keyboard inactivity. You've paid hard-earned money for your PC. SuperKey will protect your monitor's precious phosphor. . .and your investment.

SuperKey protects your work from intruders while you take a break.

Now you can lock your keyboard at any time. Prevent anyone from changing hours of work. Type in your secret password and everything comes back to life. . .just as you left it.

SUPERKEY is now available for an unbelievable \$69.95 (not copy-protected).

Minimum System Configuration: SUPERKEY is compatible with your IBM PC, XT, AT, PCjr. and 100% compatible microcomputers. Your computer must have at least 128K RAM, one disk drive and PC-DOS 2.0 or greater.



REFLEX

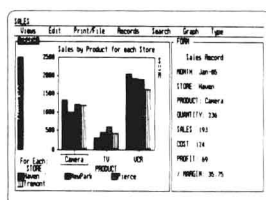
THE ANALYST™

Reflex™ is the most amazing and easy to use database management system. And if you already use Lotus 1-2-3, dBASE or PFS File, you need Reflex—because it's a totally new way to look at your data. It shows you patterns and interrelationships you didn't know were there, because they were hidden in data and numbers. It's also the greatest report generator for 1-2-3.

REFLEX OPENS MULTIPLE WINDOWS WITH NEW VIEWS AND GRAPHIC INSIGHTS INTO YOUR DATA.

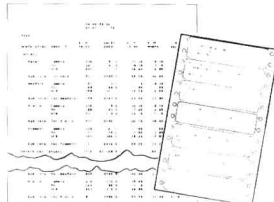
The FORM VIEW lets you build and view your database.

The LIST VIEW lets you put data in tabular List form just like a spreadsheet



The GRAPH VIEW gives you instant interactive graphic representations

The CROSSTAB VIEW gives you amazing "cross-referenced" pictures of the links and relationships hidden in your data



The REPORT VIEW allows you to import and export to and from Reflex, 1-2-3, dBASE, PFS File, and other applications and prints information in the formats you want

So Reflex shows you. Instant answers. Instant pictures. Instant analysis. Instant understanding.

THE CRITICS' CHOICE:

"The next generation of software has officially arrived."

Peter Norton, PC WEEK

"Reflex is one of the most powerful database programs on the market. Its multiple views, interactive windows and graphics, great report writer, pull-down menus and cross tabulation make this one of the best programs we have seen in a long time . . ."

The program is easy to use and not intimidating to the novice . . . Reflex not only handles the usual database functions such as sorting and searching, but also "what-if" and statistical analysis . . . It can create interactive graphics with the graphics module. The separate report module is one of the best we've ever seen."

Marc Stern, INFOWORL

Minimum System Requirements: Reflex runs on the IBM® PC, XT, AT and compatibles. 384K RAM minimum. IBM Color Graphics Adapter®, Hercules Monochrome Graphics Card™, or equivalent. PC-DOS 2.0 or greater. Hard disk and mouse optional. Lotus 1-2-3, dBASE, or PFS File optional.



Reflex is a trademark of BORLAND/Analytica Inc. Lotus is a registered trademark and Lotus 1-2-3 is a trademark of Lotus Development Corporation. dBASE is a registered trademark of Ashton-Tate. PFS is a registered trademark and PFS File is a trademark of Software Publishing Corporation. IBM PC, XT, AT, PC-DOS and IBM Color Graphics Adapter are registered trademarks of International Business Machines Corporation. Hercules Graphics Card is a trademark of Hercules Computer Technology.

此为试读, 需要完整PDF请访问: www.ertongbook.com

If you use an IBM PC, you need

TURBO *Lightning*™

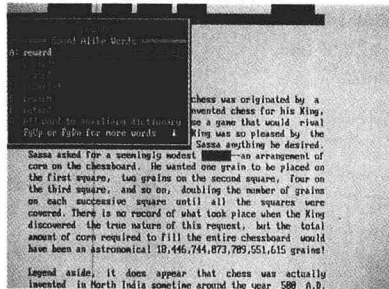
Turbo Lightning™ teams up with the Random House Spelling Dictionary® to check your spelling as you type!

Turbo Lightning, using the 83,000-word Random House Dictionary, checks your spelling *as you type*. If you misspell a word, it alerts you with a 'beep'. At the touch of a key, Turbo Lightning opens a window on top of your application program and suggests the correct spelling. Just press ENTER and the misspelled word is instantly replaced with the correct word. It's that easy!

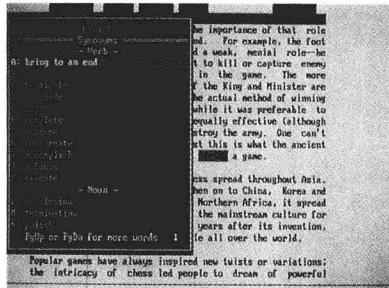
Turbo Lightning works hand-in-hand with the Random House Thesaurus® to give you instant access to synonyms.

Turbo Lightning lets you choose just the right word from a list of alternates, so you don't say the same thing the same way every time. Once Turbo Lightning opens the Thesaurus window, you see a list of alternate words, organized by parts of speech. You just select the word you want, press ENTER and your new word will instantly replace the original word. Pure magic!

If you ever write a word, think a word, or say a word, you need Turbo Lightning.



The Turbo Lightning Dictionary.



The Turbo Lightning Thesaurus.

Turbo Lightning's intelligence lets you teach it new words. The more you use Turbo Lightning, the smarter it gets!

You can also teach your new Turbo Lightning your name, business associates' names, street names, addresses, correct capitalizations, and any specialized words you use frequently. Teach Turbo Lightning once, and it knows forever.

Turbo Lightning™ is the engine that powers Borland's Turbo Lightning Library™.

Turbo Lightning brings electronic power to the Random House Dictionary® and Random House Thesaurus®. They're at your fingertips—even while you're running other programs. Turbo Lightning will also 'drive' soon-to-be-released encyclopedias, extended thesauruses, specialized dictionaries, and many other popular reference works. You get a head start with this first volume in the Turbo Lightning Library.

And because Turbo Lightning is a Borland product, you know you can rely on our quality, our 60-day money-back guarantee, and our eminently fair prices.



BORLAND
INTERNATIONAL

Suggested Retail Price \$99.95
(not copy-protected)

Minimum System Requirements:
128K IBM PC® or 100% compatible computer,
with 2 floppy disk drives and PC-DOS (MS-DOS)
2.0 or greater

IBM PC, XT, AT, and PCjr are registered trademarks of International Business Machines Corp. Lotus 1-2-3 is a registered trademark of Lotus Development Corporation. WordStar is a registered trademark of MicroPro International Corp. iBASE is a registered trademark of Ashton-Tate. Microsoft is a registered trademark of Microsoft Corporation. Sidekick is a registered trademark and Turbo Lightning and Turbo Lightning Library are trademarks of Borland International. Random House Dictionary and Random House Thesaurus are registered trademarks of Random House Inc. Reflex is a trademark of BORLAND/Analytica Inc. MultiMate is a trademark of MultiMate International Inc.



SideKick, the Macintosh Office Manager, brings information management, desktop organization and telecommunications to your Macintosh. Instantly, while running any other program.

A full-screen editor/mini-word processor

lets you jot down notes and create or edit files. Your files can also be used by your favorite word processing program like MacWrite™ or MicroSoft® Word™.

A complete telecommunication program

sends or receives information from any on-line network or electronic bulletin board while using any of your favorite application programs. A modem is required to use this feature.

A full-featured financial and scientific calculator

sends a paper-tape output to your screen or printer and comes complete with function keys for financial modeling purposes.

A print spooler prints any text file while you run other programs.

A versatile calendar lets you view your appointments for a day, a week or an entire month. You can easily print out your schedule for quick reference.

A convenient "Things-to-Do" file

reminds you of important tasks.

A convenient alarm system alerts you to daily engagements.

A phone log keeps a complete record of all your telephone activities. It even computes the cost of every call. Area code hook-up provides instant access to the state, region and time zone for all area codes.

An expense account file records your business and travel expenses.

A credit card file keeps track of your credit card balances and credit limits.

A report generator prints-out your mailing list labels, phone directory and weekly calendar in convenient sizes.

A convenient analog clock with a sweeping second-hand can be displayed anywhere on your screen.

On-line help is available for all of the powerful SIDEKICK features.

Best of all, everything runs concurrently.

SIDEKICK, the software Macintosh owners have been waiting for.

SideKick, Macintosh's Office Manager is available now for \$84.95 (not copy-protected).

Minimum System Configuration: SIDEKICK is available now for your Macintosh microcomputer in a format that is not copy-protected. Your computer must have at least 128K RAM and one disk drive. Two disk drives are recommended if you wish to use other application programs. A Hayes-compatible modem is required for the telecommunications function. To use SIDEKICK'S autodialing capability you need the Borland phone-link interface. See inside for details.



BORLAND
INTERNATIONAL

SIDEKICK is a registered trademark of Borland International, Inc. Macintosh is a trademark of McIntosh Laboratory, Inc. MacWrite is a trademark of Apple Computer, Inc. IBM is a trademark of International Business Machines Corp. Microsoft is a registered trademark and Word is a trademark of MicroSoft Corp. Hayes is a trademark of Hayes Microcomputer Products, Inc.

**FREE MICROCALC SPREADSHEET
WITH COMMENTED SOURCE CODE !**

TURBO PASCAL®

VERSION 3.0

THE CRITICS' CHOICE:

"Language deal of the century . . . Turbo Pascal: it introduces a new programming environment and runs like magic."

—Jeff Duntemann, *PC Magazine*

"Most Pascal compilers barely fit on a disk, but Turbo Pascal packs an editor, compiler, linker, and run-time library into just 39K bytes of random-access memory."

—Dave Garland, *Popular Computing*

"What I think the computer industry is headed for: well - documented, standard, plenty of good features, and a reasonable price."

—Jerry Pournelle, *BYTE*

THE FEATURES:

One-Step Compile: No hunting & fishing expeditions! Turbo finds the errors, takes you to them, lets you correct, then instantly recompiles. You're off and running in record time.

Built-in Interactive Editor: WordStar-like easy editing lets you debug quickly.

Automatic Overlays: Fits big programs into small amounts of memory.

Microcalc: A sample spreadsheet on your disk with ready-to-compile source code.

IBM PC VERSION: Supports Turtle Graphics, Color, Sound, Full Tree Directories, Window Routines, Input/Output Redirection and much more.

LOOK AT TURBO NOW!

- ☐ More than 400,000 users worldwide.
- ☐ TURBO PASCAL is proclaimed as the de facto industry standard.
- ☐ TURBO PASCAL PC MAGAZINE'S award for technical excellence.

- ☐ TURBO PASCAL named 'Most Significant Product of the Year' by PC WEEK.
- ☐ TURBO PASCAL 3.0 — the FASTEST Pascal development environment on the planet, PERIOD.

OPTIONS FOR 16-BIT SYSTEMS:

8087 math co-processor support for intensive calculations.

Binary Coded Decimals (BCD): Eliminates round-off error! A *must* for any serious business application. (No additional hardware required.)

Turbo Pascal 3.0 is available now for \$69.95.

Options: Turbo Pascal with 8087 or BCD at a low \$109.90. Turbo Pascal with both options (8087 and BCD) priced at \$124.95.

MINIMUM SYSTEM CONFIGURATION: To use Turbo Pascal 3.0 requires 64K RAM, one disk drive, Z-80, 8088/86, 80186 or 80286 microprocessor running either CP/M-80 2.2 or greater, CP/M-86 1.1 or greater, MS-DOS 2.0 or greater or PC-DOS 2.0 greater, MS-DOS 2.0 or greater or PC-DOS 2.0 or greater. A XENIX version of Turbo Pascal will soon be announced, and before the end of the year, Turbo Pascal will be running on most 68000-based microcomputers.



BORLAND
INTERNATIONAL

Turbo Pascal is a registered trademark of Borland International, Inc.
CP/M is a registered trademark of Digital Research, Inc.
IBM and PC-DOS are registered trademarks of International Business Machines Corp.
MS-DOS is a trademark of Microsoft Corp.
Z80 is a trademark of Zilog Corp.



LEARN PASCAL FROM THE FOLKS WHO INVENTED TURBO PASCAL® AND TURBO DATABASE TOOLBOX®.

Borland International proudly introduces **Turbo Tutor**®. The perfect complement to your **Turbo Pascal** compiler. **Turbo Tutor** is *really* for everyone—even if you've never programmed before.

And if you're already proficient, **Turbo Tutor** can sharpen up the fine points. The 300 page manual and program disk divides your study of Pascal into three learning modules:

FOR THE NOVICE: Gives you a concise history of Pascal, tells you how to write a simple program, and defines the basic programming terms you need to know.

ADVANCED CONCEPTS: If you're an expert, you'll love the sections detailing subjects such as "how to use assembly language routines with your **Turbo Pascal** programs."

PROGRAMMER'S GUIDE: The heart of **Turbo Pascal**. This section covers the fine points of every aspect of **Turbo Pascal** programming: program structure, data types, control structures, procedures and functions, scalar types, arrays, strings, pointers, sets, files and records.

A MUST. You'll find the source code for all the examples in the book on the **accompanying disk** ready to compile.

Turbo Tutor may be the only reference on Pascal and programming you'll ever need!

TURBO TUTOR—A REAL EDUCATION FOR ONLY \$34.95.

(not copy-protected)

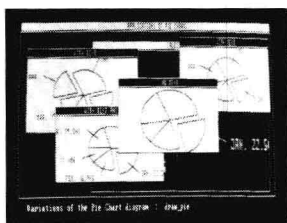
***Minimum System Configuration:** TURBO TUTOR is available today for your computer running TURBO PASCAL for PC-DOS, MS-DOS, CP/M-80, and CP/M-86. Your computer must have at least 128K RAM, one disk drive and PC-DOS 1.0 or greater, MS-DOS 1.0 or greater, CP/M-80 2.2 or greater, or CP/M-86 1.1 or greater.



Turbo Pascal and Turbo Tutor are registered trademarks and Turbo Database Toolbox is a trademark of Borland International, Inc. CP/M is a trademark of Digital Research, Inc. MS-DOS is a trademark of Microsoft Corp. PC-DOS is a trademark of International Business Machines Corp.

TURBO GRAPHIX TOOLBOX™

HIGH RESOLUTION GRAPHICS AND GRAPHIC WINDOW MANAGEMENT FOR THE IBM PC



Dazzling graphics and painless windows.

The Turbo Graphix Toolbox™ will give even a beginning programmer the expert's edge. It's a complete library of Pascal procedures that include:

- Full graphics window management.
- Tools that allow you to draw and hatch pie charts, bar charts, circles, rectangles and a full range of geometric shapes.
- Procedures that save and restore graphic images to and from disk.
- Functions that allow you to precisely plot curves.
- Tools that allow you to create animation or solve those difficult curve fitting problems.

No sweat and no royalties.

You can incorporate part, or all of these tools in your programs, and yet, we won't charge you any royalties. Best of all, these functions and procedures come complete with source code on disk ready to compile!

John Markoff & Paul Freiberger, syndicated columnists:

"While most people only talk about low-cost personal computer software, Borland has been doing something about it. And Borland provides good technical support as part of the price."

Turbo Graphix Toolbox—only \$54.95 (not copy protected).

Minimum System Configuration: Turbo Graphix Toolbox is available today for your computer running Turbo Pascal 2.0 or greater for PC-DOS, or truly compatible MS-DOS. Your computer must have at least 128K RAM, one disk drive and PC-DOS 2.0 or greater, and MS-DOS 2.0 or greater with IBM Graphics Adapter or Enhanced Graphics Adapter, IBM-compatible Graphics Adapter, or Hercules Graphics Card.



BORLAND
INTERNATIONAL

Turbo Pascal is a registered trademark and Turbo Graphix Toolbox is a trademark of Borland International, Inc.
IBM and PC-DOS are trademarks of International Business Machines Corp. MS-DOS is a trademark of Microsoft Corp.

TURBO DATABASE TOOLBOX™

Is The Perfect Complement To Turbo Pascal.

It contains a complete library of Pascal procedures that allows you to sort and search your data and build powerful applications. It's another set of tools from Borland that will give even the beginning programmer the expert's edge.

THE TOOLS YOU NEED!

TURBOACCESS Files Using B+Trees—The best way to organize and search your data. Makes it possible to access records in a file using key words instead of numbers. Now available with complete source code on disk ready to be included in your programs.

TURBOSORT—The fastest way to sort data—and TURBOSORT is the method preferred by knowledgeable professionals. Includes source code.

GINST (General Installation Program)—Gets your programs up and running on other terminals. This feature alone will save hours of work and research. Adds tremendous value to all your programs.

GET STARTED RIGHT AWAY: FREE DATABASE!

Included on every Toolbox disk is the source code to a working database which demonstrates the power and simplicity of our Turbo Access search system. Modify it to suit your individual needs or just compile it and run. Remember, no royalties!

THE CRITICS' CHOICE!

"The tools include a B+ tree search and a sorting system. I've seen stuff like this, but not as well thought out, sell for hundreds of dollars."

—Jerry Pournelle, **BYTE MAGAZINE**

"The Turbo Database Toolbox is solid enough and useful enough to come recommended."

—Jeff Duntemann, **PC TECH JOURNAL**

TURBO DATABASE TOOLBOX—ONLY \$54.95 (not copy-protected).

Minimum system configurations: 64K RAM and one disk drive. 16-bit systems: TURBO PASCAL 2.0 or greater for MS-DOS or PC-DOS 2.0 or greater. TURBO PASCAL 2.1 or greater for CP/M-86 1.1 or greater. Eight-bit systems: TURBO PASCAL 2.0 or greater for CP/M-80 2.2 or greater.



Turbo Pascal is a registered trademark and Turbo Database Toolbox is a trademark of Borland International, Inc. CP/M and CP/M-86 are registered trademarks of Digital Research, Inc. IBM and PC-DOS are registered trademarks of International Business Machines Corp. MS-DOS is a trademark of Microsoft Corp.

此为试读, 需要完整PDF请访问: www.ertongbook.com

TURBO GAMEWORKS

Secrets And Strategies Of The Masters Are Revealed For The First Time

Explore the world of state-of-the-art computer games with Turbo GameWorks™. Using easy-to-understand examples, Turbo GameWorks teaches you techniques to quickly create your own computer games using Turbo Pascal®. Or, for instant excitement, play the three great computer games we've included on disk—compiled and ready-to-run.

TURBO CHESS

Test your chess-playing skills against your computer challenger. With Turbo GameWorks, you're on your way to becoming a master chess player. Explore the complete Turbo Pascal source code and discover the secrets of Turbo Chess.

"What impressed me the most was the fact that with this program you can become a computer chess analyst. You can add new variations to the program at any time and make the program play stronger and stronger chess. There's no limit to the fun and enjoyment of playing Turbo GameWorks' Chess, and most important of all, with this chess program there's no limit to how it can help you improve your game."

—George Koltanowski, Dean of American Chess, former President of the United Chess Federation and syndicated chess columnist.

TURBO BRIDGE

Now play the world's most popular card game—Bridge. Play one-on-one with your computer or against up to three other opponents. With Turbo Pascal source code, you can even program your own bidding or scoring conventions.

"There has never been a bridge program written which plays at the expert level, and the ambitious user will enjoy tackling that challenge, with the format already structured in the program. And for the inexperienced player, the bridge program provides an easy-to-follow format that allows the user to start right out playing. The user can "play bridge" against real competition without having to gather three other people."

—Kit Woolsey, writer and author of several articles and books and twice champion of the Blue Ribbon Pairs.

TURBO GO-MOKU

Prepare for battle when you challenge your computer to a game of Go-Moku—the exciting strategy game also known as "Pente"™. In this battle of wits, you and the computer take turns placing X's and O's on a grid of 19X19 squares until five pieces are lined up in a row. Vary the game if you like using the source code available on your disk.

Minimum system configuration: IBM PC, XT, AT, Portable, 3270, PCjr, and true compatibles with 192K system memory, running PC-DOS (MS-DOS) 2.0 or later. To edit and compile the Turbo Pascal source code, you must be using Turbo Pascal 3.0 for IBM PC and compatibles.

Suggested Retail Price: \$69.95 (not copy-protected)



BORLAND
INTERNATIONAL

Turbo Pascal is a registered trademark and Turbo GameWorks is a trademark of Borland International, Inc. Pente is a registered trademark of Parker Brothers. IBM PC, XT, AT, PCjr and PC-DOS are registered trademarks of International Business Machines Corporation. MS-DOS is a trademark of Microsoft Corporation.

TABLE OF CONTENTS

INTRODUCTION	1
What Can You Do With the Editor Toolbox?	1
Required Hardware	1
Required Software	2
Structure of this Manual	2
Typography	3
The Distribution Diskettes	3
Acknowledgments	4
Chapter 1. SOME TEXT-EDITING TERMS	7
Editor	7
Text	7
Line	9
Text Stream	9
Window	9
Cursor	9
Block	10
File	10
Command	10
Command Dispatcher	10
Command Processor	11
Document Mode, Nondocument Mode	11
Chapter 2. TYPES OF EDITORS	13
Line Editors	13
WYSIWYG Editors	14
Chapter 3. REPRESENTATION OF TEXT	17
Character Data	17
The Structure of the Editor's Text Buffer	18
The "Array-of-Lines" Approach	18
The "Fixed Buffer" Approach	19
The "Linked-List" Approach	20
Chapter 4. AN (ALMOST) TRIVIAL EDITOR	25
Chapter 5. CREATING FIRST-ED—A FIRST EDITOR	
USING THE TOOLBOX	29
Building FIRST-ED	29
A Brief Introduction to FIRST-ED	32
Chapter 6. CUSTOMIZING FIRST-ED	35
The Rules of the Game: Required Files, Procedures, and Data Structures	35
The Main Program	37

Customizing the Command Interface:	
The UserCommand Procedure	37
A Simpler Editor—Using UserCommand to Disable	
FIRST-ED Commands	38
A Matter of Personal Preference—Using UserCommand	
to Filter Commands	39
A New Command	39
Integrating a New Single-Keystroke Command	40
Integrating a New Prefixed Command	41
A More Complex Editor	42
Chapter 7. MICROSTAR—A SOPHISTICATED EDITOR	43
Getting to Know MicroStar	43
Building MicroStar	43
Using the Pulldown Menu System	44
The MicroStar Command Set	44
Chapter 8. INSIDE MICROSTAR	47
The Command Dispatchers	47
The Pulldown Menu System	50
The Pop-Up Window Routines	53
The Background Print Routines	53
Customizing Error Handling	53
Customizing the Status Display	55
The "Dirty" Bit—Detecting Changes in the Text	55
Chapter 9. TEXT AND WINDOW DATA STRUCTURES	59
How Text Data is Stored	59
How Windows are Managed	61
Chapter 10. THE EDITOR KERNEL	65
Keyboard Input	65
The Scheduler	65
The Primary Command Dispatchers	66
Prefixed Command Dispatchers	66
The UserTask "Hook"	67
Chapter 11. THE EDITOR SCREEN ROUTINES	69
Screen Manipulation	69
Default Screen Format	69
The Screen Updating Routines	70
Colors	71
Chapter 12. THE TOOLBOX COMMAND PROCESSORS	73
Cursor Movement Commands	73
Text Deletion Commands	74
Word Processing Commands	76

Multiple Windows and Text Buffers	77
Window Commands	78
Block Commands	80
File Commands	82
Exit Commands	86
Chapter 13. OVERLAYING YOUR EDITOR	87
Creating Overlay Groups	87
Minimizing Thrashing	88
The Toolbox Overlay Structure	89
Caveats Regarding Overlays	89
Chapter 14. INCLUDING AN EDITOR IN YOUR PROGRAM	91
Including the Toolbox Directly in Your Code	91
Overlaying the Editor with Your Program	91
Chapter 15. TURBO EDITOR TOOLBOX FILES	95
The Turbo Editor Toolbox Distribution Diskettes	95
Files Included on Disk 1	95
Files Included on Disk 2	97
Chapter 16. TURBO EDITOR TOOLBOX CONSTANTS	99
Chapter 17. TURBO EDITOR TOOLBOX DATA TYPES	105
Chapter 18. TURBO EDITOR TOOLBOX VARIABLES	109
Chapter 19. TURBO EDITOR TOOLBOX PROCEDURES AND FUNCTIONS	117
(see Procedures and Functions Index for a complete listing of all procedures and functions)	
SUBJECT INDEX	241
PROCEDURES AND FUNCTIONS INDEX	243

LIST OF FIGURES

3-1. Representing an ASCII Character in an 8-bit Byte	17
3-2. Array-of-Lines Buffer Structure	18
3-3. Layout of Memory in Fixed-Buffer Model	20
3-4. Layout of Memory in Linked-List Model	20
6-1. Editor Toolbox Command Dispatching: Flow of Control	41
9-1. How the Editor Stores and Tracks Text Data	59
9-2. Window Descriptor Records	61

INTRODUCTION

Welcome to Turbo Editor Toolbox. This software package will enable you to explore the interesting world of editing systems using Turbo Pascal. With the aid of the Editor Toolbox, you can develop text editors and applications for the IBM PC family (and true compatibles) that use text-editing functions.

This manual makes extensive use of Turbo Pascal programming examples, and a good working knowledge of Turbo Pascal is assumed. If you need to brush up on the Pascal language, refer to the *Turbo Pascal Reference Manual* and/or the *Turbo Tutor*.

What Can You Do With the Editor Toolbox?

The Turbo Editor Toolbox is designed to help you build both simple and complex text editing applications. With the Toolbox, you can write a complete, full-featured text editor, or add specific text editing functions to your Turbo applications. We provide high- and low-level procedures which allow you to manipulate textual information as:

- Single characters
- Groups of characters: words and lines
- Groups of lines: text streams
- Windows of text streams
- Blocks of lines
- Files of lines
- Screen displays

Required Hardware

As shipped, the Editor Toolbox will run with no alterations on an IBM PC, PCjr, XT, or AT (or a 100% compatible computer). Any of the standard display adapters may be used, including the IBM Monochrome display adapter, the IBM Color/Graphics adapter, and the Enhanced Color/Graphics adapter.

If your computer is *not* 100% IBM PC-compatible, but uses a "memory-mapped" video display, it may be possible to adapt the Editor Toolbox display routines to your machine. This conversion requires an intimate knowledge of the display hardware used in your computer, and possibly some assembly language skills.

Required Software

To compile the Editor Toolbox routines, you will need Turbo Pascal (preferably Version 3.0 or greater), as well as MS-DOS or PC-DOS (Version 2.0 or greater).

Structure of this Manual

This manual is divided into four parts:

- Part I, *A Text Editing Primer*, is an overview of the terminology, philosophy, user interfaces, and data structures of modern-day text editing programs. This section provides the basic information you need to know to make good use of the Turbo Editor Toolbox.
- Section II, *Building an Editor*, guides you through the construction of your first editor. The code for a very simple editor (which does not use the Toolbox) is presented and explained. Then, the two sample Toolbox editors, FIRST-ED and MicroStar, are described—along with the details of their internal structure.
- Section III, *Harnessing the Full Power of the Turbo Editor Toolbox*, takes you behind the scenes and explains the low-level structure of the Toolbox itself. This is the information that you need to modify the Turbo Editor Toolbox routines to suit your specific needs.
- Section IV, the *Turbo Editor Toolbox Technical Reference*, lists all of the constants, types, variables, procedures and functions of the Turbo Editor Toolbox.