

---

**THE  
BIOTECHNOLOGY  
DIRECTORY**

---

**1986**

---

**Products, Companies,  
Research and Organizations**

---

**J. COOMBS**

58.67073  
B616  
1986

---

# **THE BIOTECHNOLOGY DIRECTORY**

---

# **1986**

---

**Products, Companies,  
Research and Organizations**

---

**J. COOMBS**

**STOCKTON  
PRESS**

© Macmillan Publishers Ltd, 1986

All rights reserved. No part of this publication  
may be reproduced or transmitted in any form or by any  
means without permission.

Published in the United States and Canada by  
**STOCKTON PRESS, 1986**  
15 East 26th Street  
NEW YORK, N.Y. 10010, USA

The Library of Congress has catalogued this  
serial publication as follows:

**Library of Congress Cataloguing in Publication Data**

Coombs, J.

The international biotechnical directory, 1984

Includes index

1. Biochemical engineering — Directories. I. Title.

TP248.3.C66 1983 660'.63'025 83-12138

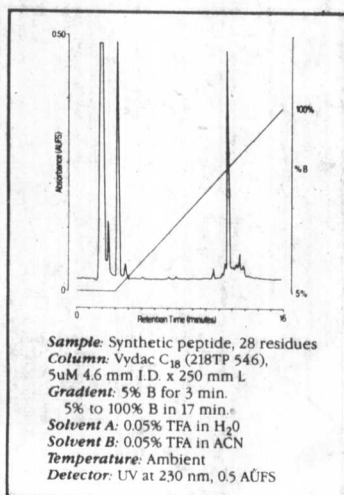
ISBN 0-943818-20-6

## Enjoy the best of all worlds in peptide synthesis.

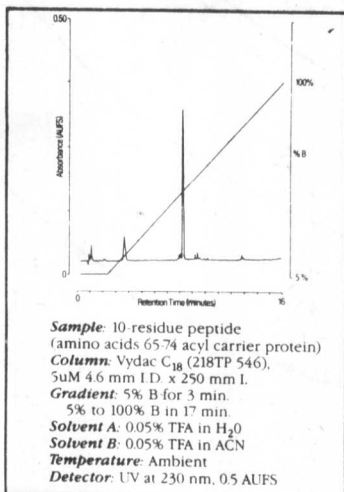
**The Model 9500 Peptide Synthesizer from Biosearch utilizes t-Boc and Fmoc-protected synthesis protocols.**

### t-Boc chemistry.

Economical t-Boc protocols allow for synthesis of sequences containing over 50 residues, with stepwise yields greater than 99% and cycle times of less than 15 hours. Methods are provided for preparation of peptide acids or amides. Furthermore, an optional capping protocol acetylates unreacted amino groups, thus ensuring high purity and greatly simplifying isolation of the desired peptide.



**Reversed-phase  
HPLC of an  
unpurified 28-  
residue peptide,  
synthesized on  
the Model 9500  
with a Biosearch  
t-Boc protocol.**



**Reversed-phase  
HPLC purification  
of acyl  
carrier protein  
(residues 65-74),  
synthesized using  
a Biosearch  
Fmoc protocol  
on a polystyrene  
resin.**

### Fmoc chemistry.

Biosearch's simplified Fmoc protocols permit fast 1.3-hour cycle times with high stepwise yields. Fmoc methods also minimize damage to the peptide product, since no harsh HF acid cleavage is required. Fmoc protocols for a variety of supports are available for the Model 9500, including polystyrene and polydimethylacrylamide resins.

### Superior activation methods.

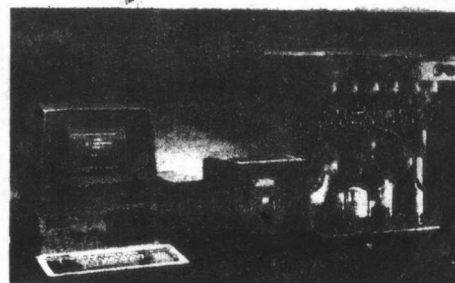
The Model 9500 incorporates a unique in-line activation process and hardware design, using diisopropylcarbodiimide (DIPCDI), that eliminates insoluble urea formation. Activation with symmetric anhydrides or active ester formation can be achieved with this design. The Biosearch system has been proven through thousands of trouble-free peptide syntheses.

### Expert system software.

Our expert system utilizes an IBM PC/XT or AT-compatible computer and Advanced Sequence Driven™ software for choosing the most appropriate coupling strategy for each amino acid addition. Strategy selection is based on type of chemistry, the relative position of each amino acid, and the nature of the desired peptide.

### Biosearch—better ways to synthesize biomolecules.

For maximum versatility and reliable automation in peptide synthesis, the Model 9500 is the answer. For complete information, contact your Biosearch representative.



Biosearch Model 9500 Peptide Synthesizer

**In U.S. and  
Canada**  
BIOSEARCH, Inc.  
2980 Kerner Blvd.  
San Rafael,  
California  
94901 USA  
Telephone:  
Toll Free  
(800) 227-2624  
In CA, call collect  
(415) 459-3907

**In Europe**  
New Brunswick  
Scientific  
(UK) Ltd.  
Hertfordshire  
England  
Telephone:  
0923 23293

Dumee Weten  
schappelijke  
Instrumenten bv  
(A subsidiary of  
New Brunswick  
Scientific Co., Inc.)  
The Netherlands  
Telephone (02155)  
14430 16834

New Brunswick  
Scientific GmbH  
West Germany  
Telephone:  
069 89 20 48  
In other Euro-  
pean Countries,  
contact New  
Brunswick  
Scientific  
(UK) Ltd.  
For representa-  
tion elsewhere,  
contact  
Biosearch, Inc.,  
San Rafael, CA.

# *You've got problems We've got solutions*

If you're immunological,  
diagnostical, viral, monoclonal,  
bacteriological, instrumental,  
analytical or any client in a  
specialized clinical or research  
laboratory area, you'll need  
specialized marketing advice  
and information

**EUROPEAN BUSINESS ASSOCIATES**  
and consultants in the laboratory

We are consultants carrying out  
multi client and single client studies,  
special reports and feasibility surveys.  
Recent reports have covered  
immunoassays, monoclonal antibodies,  
clinical chemistry, cell culture reagents,  
cell culture instrumentation and  
laboratory disposables

**Contact:**

European Business Associates S. à r. l.,  
69, rue de la Pétrusse,  
L-8094 BERTRANGE  
GR. D. LUXEMBOURG

Telephone: 352 - 31 88 84

Telex: 1753

# "NEW" Generation Fermentation Electrodes

pHoenix Electrode Company offers  
a wide variety of pH and REDOX  
ELECTRODES designed specifically  
for fermentation...

STEAM STERILIZABLE

MICRO-FLOW - THRU

AUTOCLAVABLE

IN-SITU

#### FEATURES

- Fast responding pH membrane
- Non-fouling annular reference junction
- Double-bridged reference reservoir
- Compatible with all present electrode holders and instrumentation.
- Rugged design

#### SPECIFICATIONS

pH range 0-14 pH  
Temperature Range - 5 to 135°C  
Pressure Range up to 150 psi

Write now for new catalogue

AVAILABLE SOON  
Dissolved Oxygen • Carbon Dioxide



**pHoenix**  
ELECTRODE  
COMPANY

#### AVAILABLE IN

Refillable Reference  
Sealed non-flowing reference  
6mm to 12mm OD and up to .600mm "A" length

6103 Glenmont • Houston, Texas 77081 • 713/772-6666 • 800/231-6069 • Telex 916-884-1203

# PRI

The Biomedical and Toxicology Research Institute  
of New Mexico State University

## LEADERS IN BIOTECH PRODUCT TESTING IN ANIMALS

- Product Safety and Efficacy Testing
- Responsive to Commercial Needs
- University Resources
- Complete Laboratory, Animal and Computer Facilities
- Experienced Doctoral-Level Staff
- Good Laboratory Practice Compliance
- Studies in Primates, Domestic and Laboratory Animals

**Toxicology:** PRI has conducted over 100 toxicology, antigenicity, anaphylaxis and pharmacokinetic studies during the last 5 years, mainly on synthetic hormones, blood factors, lymphokines and monoclonal antibodies. Bioactive proteins of human origin usually need to be tested in primates; they are more likely to be antigenic, or lacking normal biological activity, in species less closely related to man. PRI has conducted Biotech studies in Chimpanzees, Macaque and Squirrel monkeys, as well as standard laboratory species; farm animals are available for agricultural Biotech products.

**Reproduction and Teratology:** PRI is providing a complete range of dose-ranging, reproductive and teratology studies for Biotech products designed for use in women of childbearing age.

**Efficacy Studies:** PRI has performed efficacy studies on antiviral compounds in primates, on the biological properties of synthetic blood products, and on contraceptive action of monoclonal antibodies.

**Support Facilities:** PRI can provide special physiological monitoring, endocrine assays, complete analytical chemistry support as well as gross, microscopic and clinical pathology.

**Regulatory Affairs:** The PRI staff keeps in close touch with FDA officials and the changing regulations for Biotech products, and they can assist in protocol design; a regulatory specialist based in the Washington area can make confidential inquiries concerning specific requirements.

---

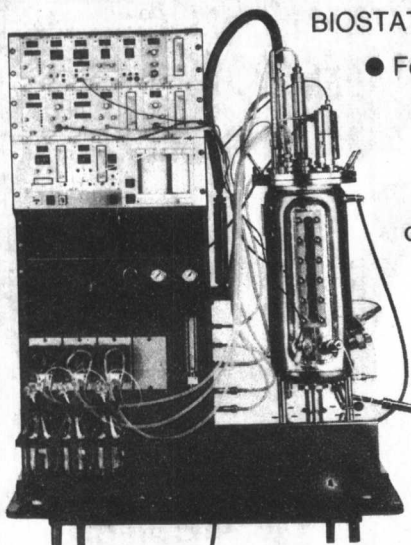
INQUIRIES: Director, Primate Research Institute, NMSU, Box 1027,  
Holloman AFB, NM 88330. (505) 479-2118; 479-6101.

# B. Braun

## Biotechnology Equipment

### Worldwide

## FERMENTER

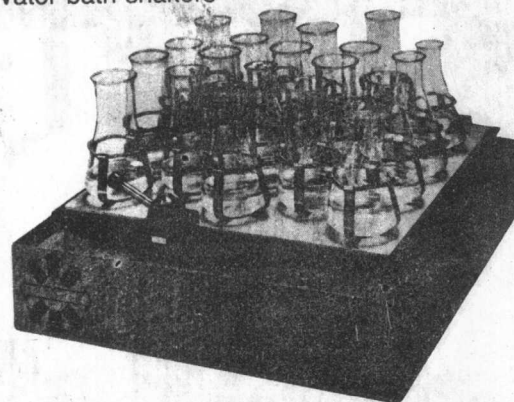


BIOSTAT® programme:

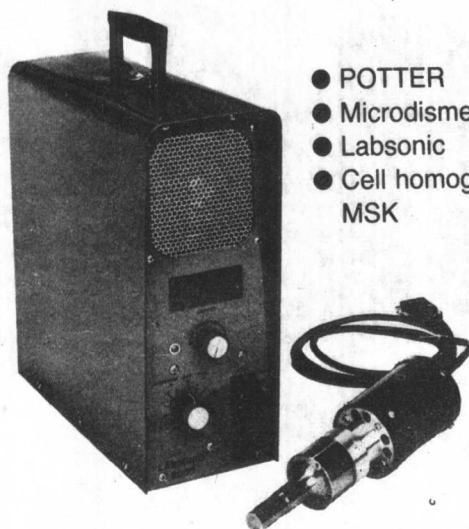
- Fermenters from 2 to 3000 liters
- Modular constructed measuring and control modules
- Individual project engineering of fermentation plants

## LABORATORY SHAKERS

- Bench shakers
- Incubation shakers
- Water bath shakers

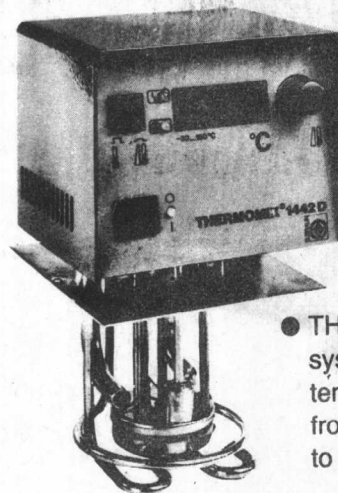


## HOMOGENIZERS



- POTTER
- Microdismembrator
- Labsonic
- Cell homogenizer MSK

## THERMO-REGULATORS



- THERMOMIX® 1400 system for the temperature range from  $-50^{\circ}\text{C}$  to  $+250^{\circ}\text{C}$

### America headquarters

B. Braun Instruments  
875 Stanton Road  
Burlingame, Ca. 94010  
Phone: 415-692-6022  
Telex: 01 76532 aic-bbi brgm

### European headquarters

B. Braun Melsungen AG  
Postfach 110 + 120  
D-3508 Melsungen  
Phone: (05661) 71-0

### Japan headquarters

Japan BBM Co., Ltd.  
1-20-5, Inokashira, Mitaka  
Tokyo, Japan 181  
Phone: 0422-43-4626  
Telex: 02822375 nbm j

### Far East headquarters

B. Braun Medical Supplies Sdn Bhd  
Bayan Lepas Free Trade Zone  
P.O. Box 880  
Penang, Malaysia

BRAUN

# Quality Tools for Today's Molecular Engineer

Wheaton Bioware products are designed to provide the unique features and demanding performance required in today's biotechnology laboratory.

With an eye toward the future, Wheaton engineers and technical representatives work side-by-side with researchers throughout the world to help pioneer this important scientific frontier. Many advances in biotechnology have been made using Wheaton products and we are constantly searching for new and better

ways to make the job go easier.

Tools for biotechnology research. Look for the name Wheaton, you can depend on the quality.



## WHEATON

Manufacturers of Laboratory Instruments & Equipment  
1000 North Tenth Street, Tel: 609-825-1400 Ext. 3010  
Millville, NJ 08332 TWX: 510-687-7580, FAX: 1-609-825-1131

# WHEATON BIOWARE™





# Give your pump a Harvard education.

Now you can educate your pump and make your laboratory work more efficient than ever before. Harvard Apparatus introduces the Educated Pump System and it will change the way you work.

The Harvard Apparatus Educated Pump System combines the legendary Harvard Pump with a microprocessor-based, interactive computer system. Complete with software, the Educated Pump System allows you to create any protocol by specifying up to six hundred flow rate/time events. You can even write your own programs in BASIC to instruct your Educated Pump to change its delivery rate according to formulas that fit your experiments.

Tasks that were previously impossible or difficult to perform can now be accomplished with simple ease. For example, with the Educated Pump System you can program nutrient delivery to bacteria or tissue cul-

tures according to geometric function and thereby parallel bacteria or tissue growth.

The system is easy to use. You literally turn it on and let the software do the work for you. Equipped with a standard keyboard, your Educated Pump conducts an interactive conversation with you via an alpha-numeric display. Pre-programmed software functions include sine wave, saw tooth, logarithmic decay, square and non-symmetrical square wave changes in flow rate.

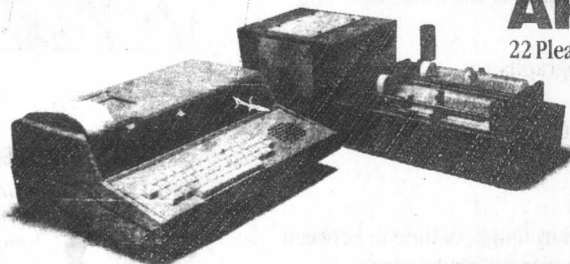
And not only can you program your pump, the included hard-copy printer will report the activities it has performed.

For dynamic pharmacology, investigations involving response times for receptors, gradient production, or an application of your own creation, let Harvard educate your pump.

For details on how to retrofit most Harvard pumps or for information on the new Harvard Educated Pump System call toll-free 1-800-343-4912, in MA 617-655-7000 or send for the Harvard Educated Pump brochure.

## HARVARD APPARATUS

22 Pleasant Street • South Natick, MA 01760

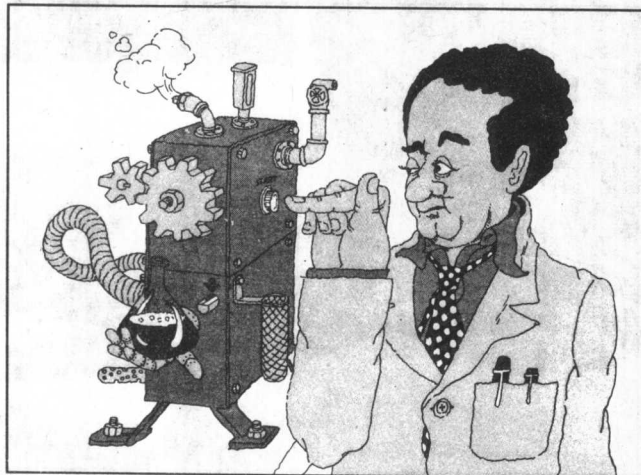


**We do our research  
so you can get on with yours.**

# Rent from U.S. Analytical Instruments and solve your problems.



**Your equipment malfunctions. Unexpectedly.**



**You want to try it. Before you buy it.**



**The project is short-term.**



**You need the instrument. Now.**

When you need it now but you might not need it forever, relax. And call U.S. Analytical Instruments. We have a complete inventory of new analytical instruments from the major manufacturers. So you can rent what you need right now.

All instruments are available for immediate delivery. And are fully supported by the manufacturer for installation and service.

- Gas, liquid and ion chromatographs
- GC/MS systems
- IR, FTIR, UV/VIS, fluorescence and AA spectrophotometers
- Thermal analyzers
- And more

Get it short term. Long term. Or any length of time in between. Choose from a wide variety of convenient rental plans.

And here's the best part of all. When you've finished solving your problems with one of our rental instruments, you just send it back.

And relax until the next time.

Call today!

**800-437-9701**

In California, 800-824-0060



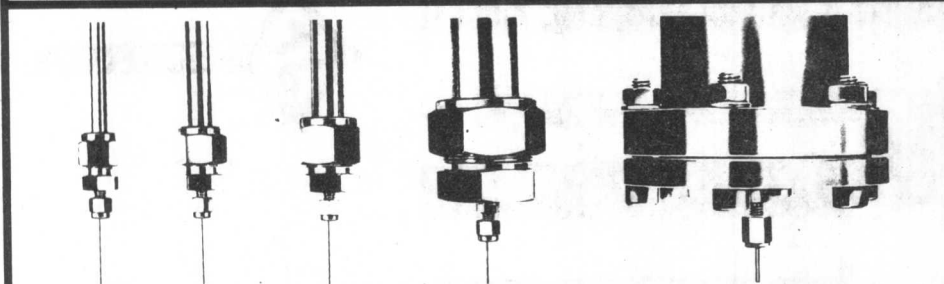
## United States Analytical Instruments



A U.S. Leasing Company  
1511 Industrial Rd.  
San Carlos, CA 94070  
(415) 595-8200

©USAI

Length Inner Diameter	75 mm	125 mm	250 mm	500 mm	1000 mm	
4.6 mm	Pre-Columns + Micro-Columns 18 X	Analytical Columns 12 X 3 Z	Standard Columns 46 X 3 Z	X = Number of available sizes Z = Number of columns with a computerized certificate		
7.1 mm	5 Diameters 5 Lengths 77 Packings 262 Columns			Semi-preparative columns		
9.5 mm				10 X	12 X	6 X
22.0 mm				Preparative columns		
50.0 mm				12 X	20 X	8 X
				Preparative columns		
	20 X	28 X				
	Production Columns					
	21 X	22 X	21 X			



# SERVA

## HPLC Columns

Optimal Flexibility for  
Solving your Problem  
Analytical or  
Preparative

WORLD-WIDE:

**SERVA** FEINBIOCHEMICA GMBH & CO.  
D-6900 HEIDELBERG · POSTFACH 10 52 60

USA:

**SERVA** FINE BIOCHEMICALS INC.  
200 SHAMES DRIVE · WESTBURY, NY 11590

# GET AN INSTANT LAB FROM TOTALAB

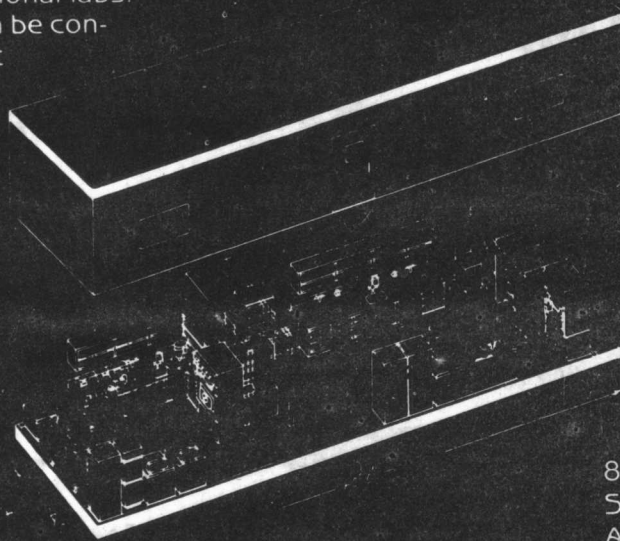
(usually 4 months) and at a fraction of the cost  
required for building conventional labs.

Ruggedly-built TOTALABs can be con-  
figured and equipped to meet

almost any application –  
analytical chemistry,  
genetic engineering,  
pathology, environmental  
testing, animal care,  
you name it. All you supply  
is water and electricity.  
If you need more lab space,  
but don't need building  
delays, we can help you –  
almost instantly. Contact  
us for details.

**TOTALAB**

P.O. Box 42204  
Houston, Texas 77042  
(713) 498-2239



800 Square Feet  
Self Contained  
Any Application

## SERVALYT® for Isoelectric Focusing



Advanced  
Multifunctional  
Carrier Ampholytes  
from



WORLD-WIDE:  
**SERVA** FEINBIOCHEMICA GMBH & CO.  
D-6900 HEIDELBERG · POSTFACH 10 52 60

USA:  
**SERVA** FINE BIOCHEMICALS INC.  
200 SHAMES DRIVE · WESTBURY, NY 11590

Introducing a new source of high-purity

# GUANIDINE HYDROCHLORIDE

and

# GUANIDINE THIOCYANATE

at competitive prices.

*Also available:*

AMMONIUM ACETATE  
AMMONIUM SULFATE

CAESIUM CHLORIDE  
CAESIUM SULFATE

SODIUM LAURYL SULFATE  
1H TETRAZOLE

*Please call or write:*

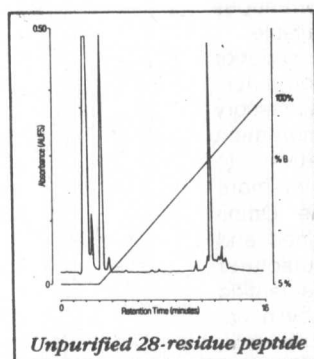
1-800-238-0001 617-655-5805

AMERICAN INTERNATIONAL CHEMICAL, INC.  
209 West Central Street Natick, MA 01760 Telex: 94-8342



# PEPTIDES FOR RESEARCH

- Full custom synthesis service
- Personalized technical support
- Fast response & delivery
- Purification service available
- Complete analysis provided
- Conjugation to carrier proteins
- Sequence integrity guaranteed



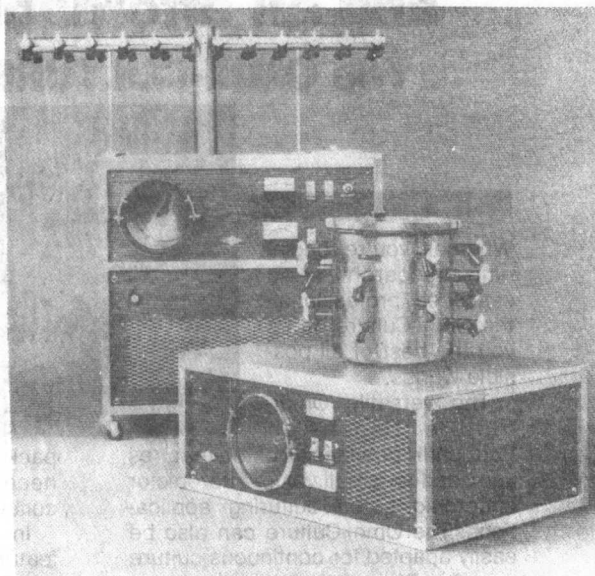
**Call toll-free  
(800) 227-2624  
In California  
(415) 459-3907**

**BIOSEARCH**  
A NEW BRUNSWICK SCIENTIFIC COMPANY

*The leader in synthesis technology*

BIOSEARCH, Inc.,  
2980 Kerner Blvd.,  
San Rafael, CA 94901 USA

# The standard in freeze drying.



Now there's a laboratory freeze dryer for all of your research or development needs.

Whether your requirements range from a single sample to mini-production 3 to 24 litres of ice capacity, Virtis has a precision freeze dryer that can save you time, space and money.

Virtis freeze dryers offer you a host of important features. Like smooth sided stainless steel condensers so that the ice plug can be removed quickly. The capacity to accept any standard chamber or manifold. Stainless steel tubular construction. Removable side panels. Hot gas quick defrost for fast melting. And more:

If you'd like to learn more about Virtis' freeze dryers for every laboratory application, please call or write.

Send for our free 48 page color brochure.



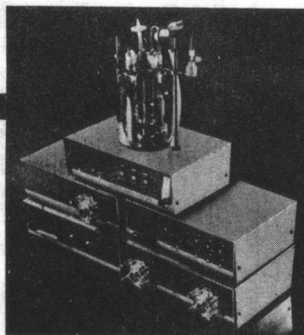
Where quality engineering makes the difference.

The Virtis Co., Inc.  
Route 208, Gardiner, New York 12525  
Phone: (914) 255-5000 (800) 431-8232 Telex: 926-474

---

# **New Bench-Top Fermenter with feedback speed control and an affordable price...**

## **The OMNI-CULTURE Fermenter**



Whether you're beginning research or a seasoned professional, the Omni-Culture offers you the best of all possible worlds.

The versatile Omni-Culture Bench-Top Fermenter provides all of the features you need for small volume aerobic or anaerobic batch culturing applications. The Omni-Culture can also be easily adapted for continuous culture or cell culturing studies.

The standard Omni-Culture package offers a full range of quality features such as: ☐ Large digital display for temperature and agitation data ☐ Stainless steel headplate with positive sealing swage connections ☐ High torque, magnetically coupled agitation system with feedback speed control ☐ Precise panel mounted air flowmeter ☐ Interchangeable 1 or 2 liter vessels ☐ And much more...

A range of optional process control and monitoring equipment is also offered.

These include Digital pH Controller, Dual or Single pH Pump Modules, Digital Dissolved Oxygen Indicator and Automatic Chemical Antifoam Controller. A convenient Chemostat

package containing all components necessary for basic continuous culture research is also available.

In addition to providing superior features and day to day performance, the Omni-Culture and its accessory process-optimizing instrumentation are cost-effective alternatives to other systems which cost far more and provide far less. The Omni-Culture Fermenter is designed and built by Virtis, a leading manufacturer of quality laboratory and scientific equipment, and supported by a nationwide sales and service network.

For the complete story on state-of-the-art Omni-Culture Fermenters, the Omni-Culture Chemostat and accessories, please send for our free color brochure:

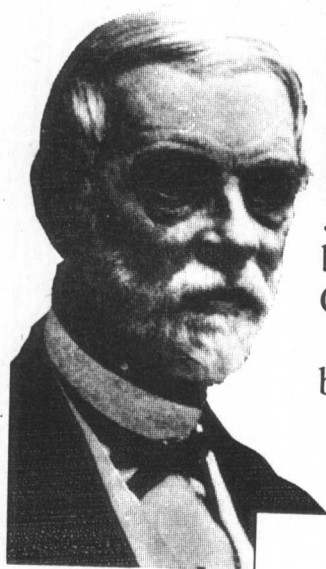


The Virtis Company, Inc.

*Where quality engineering makes the difference.*

Route 208, Gardiner, N.Y. 12525 (914) 255-5000 (800) 431-8232 Telex: 926-474

---



The development of our enzymatic method for peptide synthesis started in 1847 when brewer J.C. Jacobsen bottled his first Carlsberg lager.

The success in brewing made it

Our scientific basis is a patented technology for the use of Carboxypeptidases in peptide synthesis.

This process can be carried out in aqueous phase at moderate pH and proceeds with

out racemization. Enzymatic synthesis eliminates the conventional need for

protection and deprotection of the side chain functional groups. This leads to fewer side reactions in a synthesis

## THE PRODUCTION OF PURE PEPTIDES STARTED WITH A BEER.

possible for J.C. Jacobsen to realize a dream:

foundation of the Carlsberg Laboratory for scientific

study of the brewing process.

Today this laboratory is part of the Carlsberg Research Center engaged in the study of peptide and protein chemistry, and enzymology.

Carlbiotech is the commercial outlet for industrial applications for this research.

At Carlbiotech we offer custom synthesis of peptides in production volumes. We have the expertise to develop the synthesis, bring it safely into production, and to provide a reliable supply of high purity peptides at an attractive price to the customer.



and results in a clean process and a simplified purification. Therefore, the enzymatic synthesis produces a purer peptide at a better economy than a totally chemical synthesis.

What started with a beer becomes a rational method for producing the peptides discovered in your research and development.



## Carlbiotech

- the pure way in peptide production

Carlsberg Biotechnology Ltd.  
16, Tagensvej  
DK 2200 Copenhagen N Denmark.  
Phone 45-1-37 21 00 Telex 15671

# SERVA

FINE BIOCHEMICALS FOR THE SCIENTIST

**Molecular Biology**

**Microbiology**

**Tissue Culture**

**Peptides**

**Practical Laboratory**

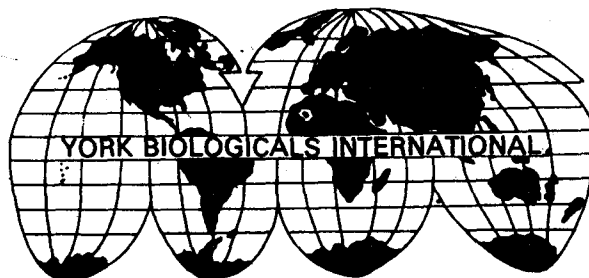
**Ion Exchangers**

**Liquid Chromatography**

**Gas Chromatography**

**Electrophoresis**

**SERVA FINE BIOCHEMICALS INC.**  
200 SHAMES DRIVE · WESTBURY, NEW YORK 11590  
Phone: (516) 333-1575 and (800) 645-3412



## PURCHASING FROM THE USA ???

- reduce your cost of import purchases —
- we consolidate shipments to save shipping costs on your orders
- we are technically qualified to answer questions about biomedical products
- you pay U.S. catalog prices + commission for handling
- guaranteed delivery in 7 days from your telex order
- TELEX 421669 ATT: YORK FOR DETAILS



## IPRI Agricultural Biotechnology R&D

- Contract R&D
- Joint Venture Development

**Specializing in New and Improved Agricultural Products for the Food Industry including:**

... Cereal Grains ... Vegetables  
... Oil and Date Palms ... Flavors

### Expertise in:

Plant Breeding • Cell Biology  
Tissue Culture • Micropropagation  
Recombinant DNA  
Biochemical Engineering  
Plant Chemistry and Biochemistry

Call or write for information, free consultation and facilities tour.

**International Plant Research Institute**  
830 Bransten Road, San Carlos, CA 94070, USA  
Tel. (415) 595-5335 • TWX 910 376 5003 IPRI SCLS

# Don't be left out of the 1987 DIRECTORY.

Send your latest information to:

Dr James Coombs  
BIOTECHNOLOGY DIRECTORY 1987  
Macmillan Reference Books  
4 Little Essex Street  
London WC2R 3LF