

Encyclopedia of Chemical Processing and Design

39

Executive Editor **John J. McKetta**

Encyclopedia of Chemical Processing and Design

EXECUTIVE EDITOR
ASSOCIATE EDITOR

John J. McKetta
William A. Cunningham

39

Pollution, Air, Costs: Part 1.
Parameters for Sizing
Systems to Polymers,
Polyamides, Aliphatic

江苏工业学院图书馆
藏书章

Marcel Dekker, Inc.

New York • Basel • Hong Kong

Library of Congress Cataloging in Publication Data

Main entry under title:

Encyclopedia of chemical processing and design.

Includes bibliographical references.

I. Chemical engineering—Dictionaries. 2. Chemistry,
Technical—Dictionaries. I. McKetta, John J.
II. Cunningham, William Aaron.

Tp9.E66 660.2'8'003 75-40646
ISBN: 0-8247-2480-1

COPYRIGHT © 1992 by MARCEL DEKKER, INC. ALL RIGHTS RESERVED.

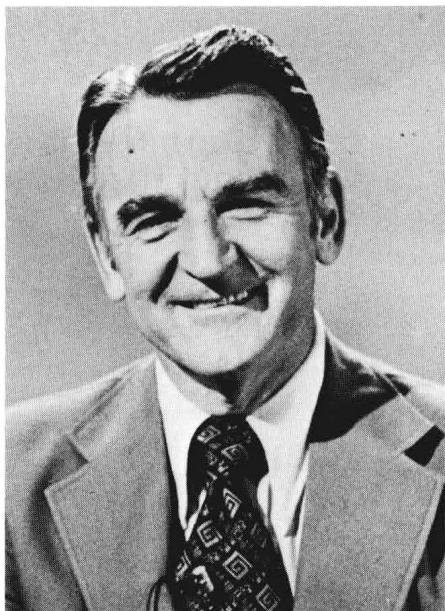
Neither this book nor any part may be reproduced or transmitted in any form or by any means, electronic or mechanical, including photocopying, microfilming, and recording, or by any information storage and retrieval system, without permission in writing from the publisher.

MARCEL DEKKER, INC.
270 Madison Avenue, New York, New York, 10016

LIBRARY OF CONGRESS CATALOG CARD NUMBER: 75-40646
ISBN: 0-8247-2489-5

Current printing (last digit):
10 9 8 7 6 5 4 3 2 1

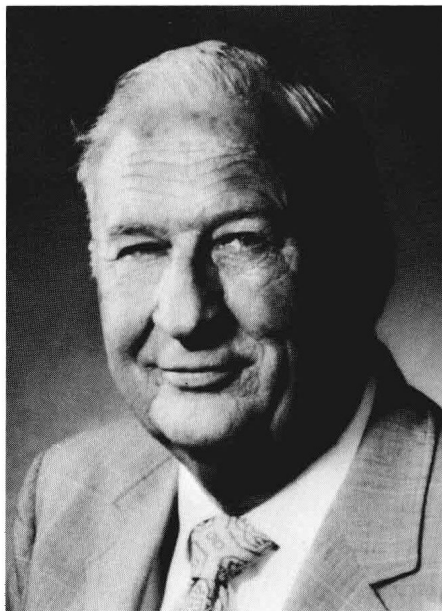
PRINTED IN THE UNITED STATES OF AMERICA



EXECUTIVE EDITOR

JOHN J. McKETTA

The University of Texas at Austin
Austin, Texas



ASSOCIATE EDITOR

WILLIAM A. CUNNINGHAM

The University of Texas
Austin, Texas

EDITORIAL ADVISORY BOARD



LYLE F. ALBRIGHT

Purdue University
Lafayette, Indiana



JAMES R. FAIR

Professor of Chemical Engineering
The University of Texas
Austin, Texas



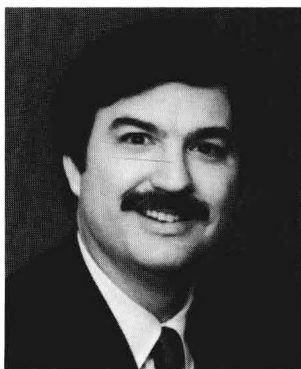
JOHN HAPPEL

Columbia University
New York, New York



ERNEST E. LUDWIG

Ludwig Consulting Engineers, Inc.
Baton Rouge, Louisiana



R. A. McKETTA

Chemical Engineer
Purvin and Gertz, Inc.
Houston, Texas

International Advisory Board

RAY C. ADAM

Former Chairman of the Board
N. L. Industries, Inc.
New York, New York

CARL W. ALBERS

Senior Process Engineer
M. W. Kellogg
Houston, Texas

M. A. ALLAWALA

Managing Director
National Refinery Ltd.
Karachi, Pakistan

HAMED H. AMER

Chairman
Agiba Petroleum Co.
Cairo, Egypt

R. G. ANTHONY

Professor, Department of Chemical
Engineering
Texas A & M University
College Station, Texas

H. J. AROYAN

Former Vice President
Chevron Research Company
Richmond, California

F. SID ASKARI

President
Technolog, Inc.
Engineering and Industrial
Consultants
Tehran, Iran

DONALD L. BAEDER

Former Executive Vice President—
Science and Technology
Occidental Petroleum Corporation
Los Angeles, California

Wm. A. BAILEY, Jr.

Former Director, MTM Process
Research and Development Lab
Shell Development Company
Houston, Texas

TRAVIS W. BAIN

Vice President
National Sales, Inc.
Jackson, Mississippi

GAREN BALEKJIAN

C. F. Braun
Arcadia, California

CESAR BAPTISTE

Vice President
Petroleos Mexicanos
Mexico City, Mexico

LEON R. MARTINEZ BASS

Sales Manager—Northern Mexico
Zincamex, S. A.
Saltillo, Mexico

ROBERT O. BATHIANY

Technical Planner
Weyerhaeuser Company
Tacoma, Washington

LUCIANO BENINCAMPI

Manager of Public Relations
CTIP—Compagnia Tecnica Industrie
Rome, Italy

LLOYD BERG

Professor
Department of Chemical Engineering
Montana State University
Bozeman, Montana

NEIL S. BERMAN

Professor of Chemical Engineering
Engineering Center
Arizona State University
Tempe, Arizona

D. J. BLICKWEDE

Former Vice President and Director
of Research
Bethlehem Steel Corp.
Bethlehem, Pennsylvania

M. J. P. BOGART

Fluor Engineers and Constructors,
Inc.
Santa Ana, California

Z. D. BONNER

Vice Chairman of the Board
Tesoro Petroleum Corp.
San Antonio, Texas

JOSEPH F. BOSICH

Bosich Consultants
Humble, Texas

ARCHIE BROODO

President
AID, Inc.
Dallas, Texas

ARTHUR W. BUSCH

Environmental Engineer Consultant
Dallas, Texas

ROBERT C. BUTLER

Administrative Assistant and Planning
Manager, Petroleum Chemicals
Division
E. I. du Pont de Nemours and Co.
Wilmington, Delaware

J. MORSE CAVENDER

President
The Mactan Company
Dusseldorf, Federal Republic of
Germany

PRAMOTE CHAIYAVICH

Chief Technologist
The Tah Oil Refinery Co., Ltd.
Bangkok, Thailand

NICHOLAS P. CHOPEY

Editor-in-Chief
Chemical Engineering Magazine
McGraw-Hill, Inc.
New York, New York

FRANK CHRENCIK

Vulcan Materials Co.
Birmingham, Alabama

R. JAMES COMEAUX

Vice President
American Petrofina
Dallas, Texas

C. W. COOK

Chairman, Executive Committee
General Foods Corp.
White Plains, New York

CHARLES F. COOK

Vice President
Research and Development
Phillips Petroleum
Bartlesville, Oklahoma

EARL J. COUCH

Research Associate
Mobil Research and Development
Corp.
Dallas, Texas

JAMES R. COUPER

Professor
Department of Chemical Engineering
University of Arkansas
Fayetteville, Arkansas

HORACE R. CRAWFORD

Senior Staff Scientist
CONOCO Corp.
Houston, Texas

ORAN L. CULBERSON

Chemical Engineer
Oak Ridge National Lab
Chemical Technology Division
Oak Ridge, Tennessee

DONALD A. DAHLSTROM

Vice President, Research and
Development
Process Equipment Group
Envirotech Corp.
Salt Lake City, Utah

PERRY P. DAWSON

Production Engineer
Dow Chemical Co.
Freeport, Texas

ELBERT M. DeFOREST

Former Director of Technology,
Chemicals and Metals
Vulcan Materials Co.
Wichita, Kansas

ROBERT G. DENKEWALTER

Corporate Vice President
Technology
Allied Corp.
Morristown, New Jersey

J. P. de SOUSA

Publisher
Chemical Age of India
Technical Press Publication
Bombay, India

JAMES D. D'IANI

Former Director of Research
The Goodyear Tire and Rubber Co.
Akron, Ohio

JUAN M. DIAZ

Production General Manager
Rohm and Haas Mexico, S. A. C. V.
Mexico City, Mexico

WERNER DIMMLING

Dipl.-Chemist
Friedrich Uhde GmbH
Dortmund, Federal Republic of
Germany

S. W. DREW

Executive Director
MCMC Technical Operations
Merck & Co., Inc.
Rahway, New Jersey

BARRETT S. DUFF

Barrett S. Duff and Associates
South Pasadena, California

P. K. DUTTA

Project Manager
Chemical and Metallurgical Design
Company, Private Ltd.
New Delhi, India

WALTER EMRICH

Consultant
Teterboro, New Jersey

E. FREDERICO ENGEL

Member of the Board of Management
Chemische Werke Hüls AG
Marl, Federal Republic of Germany

P. E. G. M. EVERS

Operations Manager
Anzo Salt Chemical Delfzyl
Delfzyl, The Netherlands

ALEXANDRE EVSTAFIEV

Director, Division of Technological
Research and Higher Education
UNESCO—Paris
Paris, France

GERALD L. FARRAR

President
Farrer Associates
Tulsa, Oklahoma

F. M. FARRELL

Technical Director
3M Company
St. Paul, Minnesota

C. SHULTS FAULKNER

President
C. S. Faulkner, Inc.
Houston, Texas

RALPH T. FERRELL

Senior Vice President, Corporate
Development
Vista Chemical Company
Houston, Texas

LOUIS FEUVRAIS

Directeur Général
Ecole Nationale Supérieure D'Arts et
Métiers
Paris, France

R. A. FINDLAY

Former Director, Fuels and
Lubricants, Research and
Development
Phillips Petroleum Company
Bartlesville, Oklahoma

DALE FRIDLEY

Manager, Intermediates Technology
Division
Exxon Chemical America
Baton Rouge, Louisiana

ROBERT H. FRITZ

President
Loss Control Consultants, Inc.
Alvin, Texas

GARY L. FUNK

Director, Advanced Process Control
Technology
Brown & Root/ITI Division
Houston, Texas

BILL F. GALLOWAY

Plant Manager
Quantum USI Division
Port Arthur, Texas

DONALD E. GARRETT

President
Saline Processors
Ojai, California

L. W. GARRETT, Jr.

President
Garrett Associates, Inc.
San Mateo, California

JACOB M. GEIST

President
Geist TEC
Allentown, Pennsylvania

ROY D. GERARD

General Manager
Westhollow Research Center
Shell Development Company
Houston, Texas

ION GHEJAN

Department of Chemical Engineering
Institute of Petroleum, Gas, and
Geology
Bucharest, Romania

B. GENE GOAR

Goar, Allison, and Associates, Inc.
Tyler, Texas

MARCEL GOLDENBERG

SAMIN Corp., Inc.
New York, New York

OM P. GOYAL

Technagement Consultant
New Bombay, India

WILHELM GRAULICH

Director, Manager, Rubber Division
Bayer AG
Leverkusen, Federal Republic of
Germany

E. HENRY GROPPE

Groppe, Long, & Littell
Houston, Texas

GIANFRANCO GUERRERI

INGECO Altech Group
Societa per Azioni Con Sede in
Milano
Milan, Italy

KENNETH M. GUTHRIE

Cost Consultant
Marina Del Rey, California

NORMAN HACKERMAN

Former President
Rice University
Houston, Texas

VLADIMIR HAENSEL

Vice President, Science and
Technology
Universal Oil Products Co.
Des Plaines, Illinois

HENRY E. HALEY

Vice President
Arthur D. Little, Inc.
Cambridge, Massachusetts

R. L. HARVEL

Project Manager
Dow Chemical International Ltd.
Tokyo, Japan

J. W. HAUN

Former Vice President and Director
of Engineering
General Mills, Inc.
Minneapolis, Minnesota

TERUAKI HIGUCHI

President
Japan Fody Corp.
Osaka, Japan

JOHN R. HILL Jr.

President and Chief Executive Officer
Gifford-Hill & Co., Inc.
Dallas, Texas

PAUL E. HIME

Former Vice President
Operation & Technical
Hoechst Celanese Chemical Group
Dallas, Texas

HAROLD L. HOFFMAN

Editor
Hydrocarbon Processing
Houston, Texas

A. B. HORN, Jr.

Former Director—Vice President
Ethyl Corporation
Baton Rouge, Louisiana

NORBERT IBL

Professor
Eidg. Techn. Hochschule
Zürich Techn.—Chemie
Zürich, Switzerland

RUBEN F. INGA

President
Confederacion Interamericana de
Ingenieria Quimica
Lima, Peru

International Advisory Board

JAMES R. JOHNSON

Former Executive Scientist and
Director, Advanced Research
Programs Laboratory
3M Company, Central Research Labs
Saint Paul, Minnesota

NAJI A. KADIR

President Scientific Research Council
Baghdad, Iraq

JOHN E. KASCH

Former Vice President
Standard Oil Indiana
Escondido, California

RAPHAEL KATZEN

Managing Partner
Ralph Katzen Associates
Cincinnati, Ohio

JOHN J. KELLY

Department of Chemical Engineering
University College, Dublin
Dublin, Ireland

HENNO KESKULA

Research Fellow
Chemical Engineering Department
The University of Texas at Austin
Austin, Texas

O. P. KHARBANDA

O. P. Kharbanda & Associates
Cost and Management Consultants
Bombay, India

WLODZIMIERZ KISIELOW

Professor of Petroleum Technology,
Director of Research
Department of Petroleum and Coal
Centre of Polish Academy of Sciences
Krzywoustego, Poland

MOHAN SINGH KOTHARI

Chief Consultant
Punjab Industrial Consultancy
Organisation
Chandigarh, India

G. R. KRUGER

President
Semarck, Inc.
Houston, Texas

A. P. KUDCHADKER

Professor of Chemical Engineering
and Dean of Student Affairs
Indian Institute of Technology.
Kanpur
Kanpur, India

RALPH LANDAU

Former Chairman
Halcon International, Inc.
New York, New York

W. S. LANIER

Project Manager
Seadrift Expansion Projects
Union Carbide Corp.
Houston, Texas

CLARK P. LATTIN, Jr.

Former President
The M. W. Kellogg Company
Houston, Texas

ISIDORO LAZARRAGA-LEANZA

Chief of Engineering and Control
Empresa Nacional del Petroleo
Viña del Mar, Chile

JEAN Le BRETON

Managing Director
Elf Aquitaine Indonesie
Jakarta, Indonesia

IRV LEIBSON

Vice President
Bechtel Corp.
San Francisco, California

PIERRE Le PRINCE

Director of Refining and Engineering
Center
Institut Francaise de Petrole
Malmaison, France

C. E. LETSCHER

Caltex Petroleum Company
New York, New York

C. J. LIDDLE

White Young & Partners Ltd.
Herts, England

NORMAN N. LI

Director, Chemical & Process
Technology
Allied Signal
Engineered Materials Research
Center
Des Plaines, Illinois

DAVID C. K. LIN

Senior Engineer
Owens Corning Fiberglas Corp.
Newark, Ohio

CHARLES E. LOEFFLER

Technical Manager
Celanese Chemical Company
Pampa, Texas

T. N. LOLADZE

Vice-Rector, Professor of the
Georgian Polytechnic Institute
Tbilisi, USSR

STANLEY L. LOPATA

Chairman of the Board
Carboline Company
Saint Louis, Missouri

PHILIPS S. LOWELL

Chemical Engineer
Consultant
Austin, Texas

W. D. LUEDEKE

Former Planning Manager
E. I. du Pont de Nemours
Wilmington, Delaware

BRYCE I. MacDONALD

Manager, Environmental Engineering
General Electric Company
Fairfield, Connecticut

R. N. MADDOX

Professor
School of Chemical Engineering
Oklahoma State University
Stillwater, Oklahoma

KLAUS MAI

Former President
Shell Development
Houston, Texas

F. DREW MAYFIELD

Drew Mayfield & Associates
Baton Rouge, Louisiana

GUY McBRIDE

Former President
Colorado School of Mines
Golden, Colorado

CLYDE McKINLEY

Former Director, Allentown Labs
Air Products and Chemicals, Inc.
Allentown, Pennsylvania

RICARDO MILLARES

President
Papel Satinado, S. A.
Mexico City, Mexico

ROBERT L. MITCHELL

Former Vice Chairman of the Board
Celanese Corp.
New York, New York

RICHARD MOLLISON

General Manager
Colpapel, S. A.
Pereira, Columbia

DONALD D. MULRANEY

C. F. Braun Co.
Alhambra, California

CARLOS EPSTEIN MURGUIA

General Manager and President of the
Board
Industrias Guillermo Murguia, S. A.
Naucalpan, Mexico

TAKAYUKI NATE

Plastics Sales Department
Tonen Petrochemical Co. Ltd.
Tokyo, Japan

JAMES K. NICKERSON

Research Associate
Esso Research and Engineering
Company
Summit, New Jersey

ALEX G. OBLAD

Distinguished Professor of Chemistry
Mining, and Fuels Engineering
University of Utah
Salt Lake City, Utah

H. E. O'CONNEL

Former President
Tenneco Chemicals Inc.
Houston, Texas

ERNEST O. OHSOL

Consultant
Ohsol Technical Associates
Crosby, Texas

I. O. OLADAPO

Dean of Engineering
University of Lagos
Lagos, Nigeria

GORDON F. PALM

President
Gordon, F. Palm & Associates
Lakeland, Florida

F. F. PAPA-BLANCO

Advisor of Educational Technology
Instituto Latino Americano de la
Comunicacion Educativa
Mexico City, Mexico

DILIP M. PATEL

Manager of Process Design &
Technology
John Brown E & C, Inc.
Houston, Texas

MARCELLO PICCIOTTI

Technical Promotion Manager
TechniPetrol-Rome
Rome, Italy

THOMAS C. PONDER

Petrochemicals Editor
Hydrocarbon Processing
Houston, Texas

R. G. H. PRINCE

Professor, Head of Department
Chemical Engineering
University of Sydney
Sydney, Australia

HUGH S. PYLANT

Project Manager
The Pace Consultants, Inc.
Houston, Texas

EDWIN L. RAINWATER

Dow Chemical USA
Texas Operations
Industrial Chemicals Division
Freeport, Texas

J. S. RATCLIFFE

Professor of Chemical Engineering
University of New South Wales
Kensington, Australia

FRANCIS E. REESE

Former Vice President and Managing
Director
International Monsanto Company
Saint Louis, Missouri

AURELIO REITER

Former Research Manager of Esso
Standard Italiana Roma-Italy
Rome, Italy

LARRY RESEN

Larry Resen Associates
Wilton, Connecticut

H. KEN RIGSBEE

Project Manager
Phillips 66 Natural Gas Company
Houston, Texas

FRANK S. RIORDAN, Jr.

Director, Technology Planning
Monsanto Textiles Company
Saint Louis, Missouri

DENNIS F. RIPPLE

Technical Manager, Process
Technology
Hoechst Celanese Corporation
Corpus Christi, Texas

LOUIS R. ROBERTS

Director, Planning and Source
Evaluation
Texas Air Control Board
Austin, Texas

RICCARDO ROBITSCHKE

Direttore Divisione Resine
Societa Italiana Resine
Milano, Italy

ROBERTO RODRIQUEZ

INTEVEP
Caracas, Venezuela

GERHARD ROUVÉ

Director of the Institute for Water
Resources Development
Technical University Aachen
Aachen, Federal Republic of
Germany

JOHN H. SANDERS

Vice President and Assistant General
Manager
Eastman Chemicals Division
Eastman Kodak Company
Kingsport, Tennessee

HIDESHI SATO

General Manager
Technical Information Office
Technical Development Department
Nippon Steel Corp.
Tokyo, Japan

GEORGE E. SCHAAL

Manager, Research and Development
Produits Chimiques Ugine Kuhlmann
Pierre-Benite, France

GERT G. SCHOLTEN

Managing Director
Edelcanu Gesellschaft mbH
Frankfurt/Main, Federal Republic of
Germany

DOUGLAS M. SELMAN

Vice President
Business Development & Technology
Exxon Chemical Company
Darien, Connecticut

M. L. SHARRAH

Former Senior Vice President
Continental Oil Company
Stamford, Connecticut

JOHN W. SHEEHAN

Vice President, Manufacturing and
Marketing
Champlin Petroleum Company
Kerrville, Texas

PIERRE SIBRA

Designer
Esso Engineering Services Ltd.
Surrey, England

PHILIP M. SIGMUND

Professor of Chemical Engineering
University of Calgary
Alberta, Canada

ARTHUR L. SMALLEY, Jr.

President
Matthew Hall Inc.
Houston, Texas

CARL I. SOPCISAK

Technical Consultant
Synthetic Fuels
Wheat Ridge, Colorado

PETER H. SPITZ

President
Chemicals Systems Inc.
New York, New York

SAM STRELZOFF

Consultant
Marlboro, Vermont

MARK B. STRINGFELLOW

President & Chief Executive Officer
Environmental Control Group, Inc.
Maple Shade, New Jersey

Y. S. SURY

CIBA-Geigy Chemical Corp.
Saint Gabriel, Louisiana

MICHAEL W. SWARTZLANDER

Staff Engineer
Union Carbide Corp.
South Charleston, West Virginia

T. SZENTMARTONY

Associate Professor
Technical University Budapest
Budapest, Hungary

M. TAKENOUCHI

General Manager of Manufacturing
Department
Maruzen Oil Co., Ltd.
Tokyo, Japan

SOONTHORN THAVIPHOKE

Managing Director
S. Engineering Services Co., Ltd.
Bangkok, Thailand

ROBERT S. TIMMINS

Core Laboratory
Aurora, Colorado

A. A. TOPRAC

President
Interchem-Hellas
Athens, Greece

YORGI A. TOPRAKCOGLU

Chairman of the Board of Directors
Marshall Boya ve Vernik Sanayii A. S.
Istanbul, Turkey

GOPAL TRIPAHTI

Vice Chancellor
Lucknow University
Lucknow, India

HERNANCO VASQUEZ-SILVA

President
Hernando Vasquez & Associates, Ltd.
Bogota, Colombia

M. A. VELA

President
VELCO Engineering, Inc.
Houston, Texas

**JUAN JOSE URRUELA
VILLACORTA**

Ingeniero
Fabrica de Jabon "La Luz, S. A."
Guatemala

S. P. VOHRA

Managing Director
Bakelite Hylam, Ltd.
Bombay, India

A. L. WADDAMS

Former Manager, Marketing Services
Division
BP Chemicals International Ltd.
London, England

T. J. WALKER

Former Production Manager
Dow Chemical Europe S. A.
Zürich, Switzerland

J. C. WALTER, Jr.

J. C. Walter Interests
Houston, Texas

THEODORE WEAVER

Director of Licensing
Fluor Corporation
Los Angeles, California

ALBERT H. WEHE

Chief, Cost and Energy
U. S. Government
Raleigh, North Carolina

GUY E. WEISMANTEL

President
Weismantel International
Houston, Texas

PAUL B. WEISZ

Distinguished Professor
Chemical and Bio-Engineering
University of Pennsylvania
Philadelphia, Pennsylvania

JACK W. WESTERFIELD

Manager, Project Engineering
Diamond Shamrock
San Antonio, Texas

D. L. WILEY

Former Senior Vice President
Union Carbide Corp.
Danbury, Connecticut

JACK C. WILLIAMS

Former Vice President
Texaco, Inc.
Houston, Texas

MASAMI YABUNE

Section Head, Technical Section
Tonen Pertochemical Co., Ltd.
Tokyo, Japan

LEWIS C. YEN

Manager, Technical Data
M. W. Kellogg Company
Houston, Texas

STANLEY B. ZDONIK

Vice President and Manager
Process Department
Stone and Webster Engineering Corp.
Boston, Massachusetts

Contributors to Volume 39

- Lyle F. Albright, Ph.D.** Professor, School of Chemical Engineering, Purdue University, West Lafayette, Indiana: *Polymerization*
- Darrell T. Barnette, Ph.D.** Ciba-Geigy Corporation, McIntosh, Alabama: *Polymerization, Miniemulsion*
- Joseph A. Biesenberger** Professor, Stevens Institute of Technology, Castle Point, Hoboken, New Jersey: *Polymer Processing*
- Nicholas P. Cheremisinoff, Ph.D.** Product Development Group Head-EP Polymers, Elastomers Technology Division, Exxon Chemical Company, Linden, New Jersey: *Polymer Extrusion; Polymer Mixing*
- Terry S. Chern, Ph.D.** Textile Fibers Department, E. I. du Pont de Nemours & Co., Inc., Richmond, Virginia: *Polymers, Polyamides, Aliphatic*
- Davis L. Ford, Ph.D.** President, Davis L. Ford & Associates, Austin, Texas: *Pollution and Its Control: Part 3. Wastewater*
- Costas G. Gogos** Professor of Chemical Engineering, Stevens Institute of Technology, Castle Point, Hoboken, New Jersey: *Polymer Processing*
- Louis S. Henderson, III** Supervisor, Technical Services, Polystyrenics Technology, ARCO Chemical Company, Newton Square, Pennsylvania: *Polymerization, Stability Analysis in Turbine-Agitated Reactors; Polymers, Pelletization, Die Plate Simulation; Polymers, Pelletization, Experiments on Capillary Die Freeze-Off/ Melt Fracture*
- D. Herron** Bepex Corporation, Minneapolis, Minnesota: *Polymer Drying Equipment, Selection of*
- Peter Hold** Consultant, Hoboken, New Jersey: *Polymer Processing*
- D. Hummel** Bepex Corporation, Minneapolis, Minnesota: *Polymer Drying Equipment, Selection of*
- Jerry R. Johanson, Ph.D.** President, JR Johanson, Inc., San Luis Obispo, California: *Polymer Foam Flakes Handling*
- Dilhan M. Kalyon** Professor, Stevens Institute of Technology, Castle Point, Hoboken, New Jersey: *Polymer Processing*
- Lawrence S. Kirch, Ph.D.** Group Leader, Analytical Research, Rohm and Haas Company, Spring House, Pennsylvania: *Polymerization, Calorimetry Application*
- Rudy Lisa, Ph.D.** Research Associate, BASF Corporation, Wyandotte, Michigan: *Polymerization, End-Point Determination*
- Joseph W. Magee, Ph.D.** Senior Scientist, Analytical Research, Rohm and Haas Company, Spring House, Pennsylvania: *Polymerization, Calorimetry Application*
- Joseph F. Malina, Jr., Ph.D., P.E.** The C. W. Cook Professor in Environmental Engineering, Department of Chemical Engineering, The University of Texas at Austin, Austin, Texas: *Pollution and Its Control: Part 2. Solid Wastes and Sludge. Treatment and Disposal*
- Daniel F. Mielcarek** Manager of Plastic Applications, Werne & Pfleiderer Corporation, Ramsey, New Jersey: *Polymer Compounding, Twin Screw*

- Louis R. Roberts, Ph.D., P.E.** President, L. R. Roberts Engineering, Inc., Austin, Texas: *Pollution and Its Control: Part 1. Air Pollution*
- J. Albert Rolston, P.E.** Consulting Engineer, Rolston and Associates, Granville, Ohio: *Polymer, Dual Laminates*
- Steven G. Schon** Technical Services, Polystyrenics Technology, ARCO Chemical Company, Newton Square, Pennsylvania: *Polymers, Pelletization, Experiments on Capillary Die Freeze-Off/Melt Fracture*
- F. Joseph Schork, Ph.D.** Associate Professor, School of Chemical Engineering, Georgia Institute of Technology, Atlanta, Georgia: *Polymerization, Miniemulsion*
- Raymond B. Seymour, Ph.D.** Distinguished Professor, Department of Polymer Science, The University of Southern Mississippi, Hattiesburg, Mississippi: *Polymers, General Overview*
- Wanee W. Stuper, Ph.D.** Senior Scientist, Analytical Research, Rohm and Haas Company, Spring House, Pennsylvania: *Polymerization, Calorimetry Application*
- Zehev Tadmor** President, Technion-Israel Institute of Technology, Haifa, Israel: *Polymer Processing*
- William M. Vatavuk, P.E.** Senior Chemical Engineer, U.S. Environmental Protection Agency, Research Triangle Park, North Carolina: *Pollution, Air, Costs: Part 1. Parameters for Sizing Systems; Pollution, Air, Costs: Part 2. Estimating Capital and Operating Costs*

Conversion to SI Units

To convert from	To	Multiply by
acre	square meter (m ²)	4.046×10^3
angstrom	meter (m)	1.0×10^{-10}
are	square meter (m ²)	1.0×10^2
atmosphere	newton/square meter (N/m ²)	1.013×10^5
bar	newton/square meter (N/m ²)	1.0×10^5
barrel (42 gallon)	cubic meter (m ³)	0.159
Btu (International Steam Table)	joule (J)	1.055×10^3
Btu (mean)	joule (J)	1.056×10^3
Btu (thermochemical)	joule (J)	1.054×10^3
bushel	cubic meter (m ³)	3.52×10^{-2}
calorie (International Steam Table)	joule (J)	4.187
calorie (mean)	joule (J)	4.190
calorie (thermochemical)	joule (J)	4.184
centimeter of mercury	newton/square meter (N/m ²)	1.333×10^3
centimeter of water	newton/square meter (N/m ²)	98.06
cubit	meter (m)	0.457
degree (angle)	radian (rad)	1.745×10^{-2}
denier (international)	kilogram/meter (kg/m)	1.0×10^{-7}
dram (avoirdupois)	kilogram (kg)	1.772×10^{-3}
dram (troy)	kilogram (kg)	3.888×10^{-3}
dram (U.S. fluid)	cubic meter (m ³)	3.697×10^{-6}
dyne	newton (N)	1.0×10^{-5}
electron volt	joule (J)	1.60×10^{-19}
erg	joule (J)	1.0×10^{-7}
fluid ounce (U.S.)	cubic meter (m ³)	2.96×10^{-5}
foot	meter (m)	0.305
furlong	meter (m)	2.01×10^2
gallon (U.S. dry)	cubic meter (m ³)	4.404×10^{-3}
gallon (U.S. liquid)	cubic meter (m ³)	3.785×10^{-3}
gill (U.S.)	cubic meter (m ³)	1.183×10^{-4}
grain	kilogram (kg)	6.48×10^{-5}
gram	kilogram (kg)	1.0×10^{-3}
horsepower	watt (W)	7.457×10^2
horsepower (boiler)	watt (W)	9.81×10^3
horsepower (electric)	watt (W)	7.46×10^2
hundred weight (long)	kilogram (kg)	50.80
hundred weight (short)	kilogram (kg)	45.36
inch	meter (m)	2.54×10^{-2}
inch mercury	newton/square meter (N/m ²)	3.386×10^3
inch water	newton/square meter (N/m ²)	2.49×10^2
kilogram force	newton (N)	9.806

To convert from	To	Multiply by
kip	newton (N)	4.45×10^3
knot (international)	meter/second (m/s)	0.5144
league (British nautical)	meter (m)	5.559×10^3
league (statute)	meter (m)	4.83×10^3
light year	meter (m)	9.46×10^{15}
liter	cubic meter (m ³)	0.001
micron	meter (m)	1.0×10^{-6}
mil	meter (m)	2.54×10^{-6}
mile (U.S. nautical)	meter (m)	1.852×10^3
mile (U.S. statute)	meter (m)	1.609×10^3
millibar	newton/square meter (N/m ²)	100.0
millimeter mercury	newton/square meter (N/m ²)	1.333×10^2
oersted	ampere/meter (A/m)	79.58
ounce force (avoirdupois)	newton (N)	0.278
ounce mass (avoirdupois)	kilogram (kg)	2.835×10^{-2}
ounce mass (troy)	kilogram (kg)	3.11×10^{-2}
ounce (U.S. fluid)	cubic meter (m ³)	2.96×10^{-5}
pascal	newton/square meter (N/m ²)	1.0
peck (U.S.)	cubic meter (m ³)	8.81×10^{-3}
pennyweight	kilogram (kg)	1.555×10^{-3}
pint (U.S. dry)	cubic meter (m ³)	5.506×10^{-4}
pint (U.S. liquid)	cubic meter (m ³)	4.732×10^{-4}
poise	newton second/square meter (N · s/m ²)	0.10
pound force (avoirdupois)	newton (N)	4.448
pound mass (avoirdupois)	kilogram (kg)	0.4536
pound mass (troy)	kilogram (kg)	0.373
poundal	newton (N)	0.138
quart (U.S. dry)	cubic meter (m ³)	1.10×10^{-3}
quart (U.S. liquid)	cubic meter (m ³)	9.46×10^{-4}
rod	meter (m)	5.03
roentgen	coulomb/kilogram (c/kg)	2.579×10^{-4}
second (angle)	radian (rad)	4.85×10^{-6}
section	square meter (m ²)	2.59×10^6
slug	kilogram (kg)	14.59
span	meter (m)	0.229
stoke	square meter/second (m ² /s)	1.0×10^{-4}
ton (long)	kilogram (kg)	1.016×10^3
ton (metric)	kilogram (kg)	1.0×10^3
ton (short, 2000 pounds)	kilogram (kg)	9.072×10^2
torr	newton/square meter (N/m ²)	1.333×10^2
yard	meter (m)	0.914

Bringing Costs up to Date

Cost escalation via inflation bears critically on estimates of plant costs. Historical costs of process plants are updated by means of an escalation factor. Several published cost indexes are widely used in the chemical process industries:

Nelson Cost Indexes (*Oil and Gas J.*), quarterly

Marshall and Swift (M&S) Equipment Cost Index, updated monthly

CE Plant Cost Index (*Chemical Engineering*), updated monthly

ENR Construction Cost Index (*Engineering News-Record*), updated weekly

All of these indexes were developed with various elements such as material availability and labor productivity taken into account. However, the proportion allotted to each element differs with each index. The differences in overall results of each index are due to uneven price changes for each element. In other words, the total escalation derived by each index will vary because different bases are used. The engineer should become familiar with each index and its limitations before using it.

Table 1 compares the CE Plant Index with the M&S Equipment Cost

TABLE 1 *Chemical Engineering* and Marshall and Swift Plant and Equipment Cost Indexes since 1950

Year	CE Index	M&S Index	Year	CE Index	M&S Index
1950	73.9	167.9	1970	125.7	303.3
1951	80.4	180.3	1971	132.3	321.3
1952	81.3	180.5	1972	137.2	332.0
1953	84.7	182.5	1973	144.1	344.1
1954	86.1	184.6	1974	165.4	398.4
1955	88.3	190.6	1975	182.4	444.3
1956	93.9	208.8	1976	192.1	472.1
1957	98.5	225.1	1977	204.1	505.4
1958	99.7	229.2	1978	218.8	545.3
1959	101.8	234.5	1979	238.7	599.4
1960	102.0	237.7	1980	261.2	659.6
1961	101.5	237.2	1981	297.0	721.3
1962	102.0	238.5	1982	314.0	745.6
1963	102.4	239.2	1983	316.9	760.8
1964	103.3	241.8	1984	322.7	780.4
1965	104.2	244.9	1985	325.3	789.6
1966	107.2	252.5	1986	318.4	797.6
1967	109.7	262.9	1987	323.8	813.6
1968	113.6	273.1	1988	342.5	852.0
1969	119.0	285.0	1989	355.4	895.1
			1990	357.6	915.1

TABLE 2 Nelson Inflation Refinery Construction Indexes since 1946 (1946 = 100)

Date	Materials Component	Labor Component	Miscellaneous Equipment	Nelson Inflation Index
1946	100.0	100.0	100.0	100.0
1947	122.4	113.5	114.2	117.0
1948	139.5	128.0	122.1	132.5
1949	143.6	137.1	121.6	139.7
1950	149.5	144.0	126.2	146.2
1951	164.0	152.5	145.0	157.2
1952	164.3	163.1	153.1	163.6
1953	172.4	174.2	158.8	173.5
1954	174.6	183.3	160.7	179.8
1955	176.1	189.6	161.5	184.2
1956	190.4	198.2	180.5	195.3
1957	201.9	208.6	192.1	205.9
1958	204.1	220.4	192.4	213.9
1959	207.8	231.6	196.1	222.1
1960	207.6	241.9	200.0	228.1
1961	207.7	249.4	199.5	232.7
1962	205.9	258.8	198.8	237.6
1963	206.3	268.4	201.4	243.6
1964	209.6	280.5	206.8	252.1
1965	212.0	294.4	211.6	261.4
1966	216.2	310.9	220.9	273.0
1967	219.7	331.3	226.1	286.7
1968	224.1	357.4	228.8	304.1
1969	234.9	391.8	239.3	329.0
1970	250.5	441.1	254.3	364.9
1971	265.2	499.9	268.7	406.0
1972	277.8	545.6	278.0	438.5
1973	292.3	585.2	291.4	468.0
1974	373.3	623.6	361.8	522.7
1975	421.0	678.5	415.9	575.5
1976	445.2	729.4	423.8	615.7
1977	471.3	774.1	438.2	653.0
1978	516.7	824.1	474.1	701.1
1979	573.1	879.0	515.4	756.6
1980	629.2	951.9	578.1	822.8
1981	693.2	1044.2	647.9	903.8
1982	707.6	1154.2	622.8	976.9
1983	712.4	1234.8	656.8	1025.8
1984	735.3	1278.1	665.6	1061.0
1985	739.6	1297.6	673.4	1074.4
1986	730.0	1330.0	684.4	1089.9
1987	748.9	1370.0	703.1	1121.5
1988	802.8	1405.6	732.5	1164.5
1989	829.2	1440.4	769.9	1195.9
1990	832.8	1487.7	797.5	1225.7

Index. Table 2 shows the Nelson Inflation Petroleum Refinery Construction Indexes since 1946. It is recommended that the CE Index be used for updating total plant costs, and the M&S Index or Nelson Index for updating equipment costs. The Nelson Indexes are better suited for petroleum refinery materials, labor, equipment, and general refinery inflation.

Since

$$C_B = C_A(B/A)^n \quad (1)$$

Here, A = the size of units for which the cost is known, expressed in terms of capacity, throughput, or volume; B = the size of unit for which a cost is required, expressed in the units of A ; $n = 0.6$ (i.e., the six-tenths exponent); C_A = actual cost of unit A ; and C_B = the cost for B being sought for the same time period as cost C_A .

To approximate a current cost, multiply the old cost by the ratio of the current index value to the index at the date of the old cost:

$$C_B = C_A I_B / I_A \quad (2)$$

Here, C_A = old cost; I_B = current index value; and I_A = index value at the date of old cost.

Combining Eqs. (1) and (2):

$$C_B = C_A(B/A)^n(I_B/I_A) \quad (3)$$

For example, if the total investment cost of Plant A was \$25,000,000 for 200-million-lb/yr capacity in 1974, find the cost of Plant B at a throughput of 300 million lb/yr on the same basis for 1986. Let the sizing exponent, n , be equal to 0.6.

From Table 1, the CE Index for 1986 was 318.4, and for 1974 it was 165.4. Via Eq. (3):

$$\begin{aligned} C_B &= C_A(B/A)^n(I_B/I_A) \\ &= 25.0(300/200)^{0.6}(318.4/165.4) \\ &= \$61,200,000 \end{aligned}$$

