



KASETSART UNIVERSITY

CONCISE INFORMATION

(AS OF MAY, 1985)

KASETSART UNIVERSITY

CONCISE INFORMATION

(AS OF MAY, 1985)

TABLE OF CONTENTS

<i>Content</i>	<i>Page</i>
<i>General</i>	<i>1</i>
<i>Brief History</i>	<i>1</i>
<i>Functions and Organizations</i>	<i>3</i>
<i>Organization Chart</i>	<i>4</i>
<i>University Administrative Officers</i>	<i>5</i>
<i>University Administrative Staff</i>	<i>5</i>
<i>Deans of Faculties</i>	<i>6</i>
<i>Directors of Units of Faculty Rank</i>	<i>7</i>
<i>Directors of Centers</i>	<i>7</i>
<i>Chairman of Standing Committees</i>	<i>8</i>
<i>Heads of Academic Departments</i>	<i>8</i>
<i>Affiliated Institutions</i>	<i>13</i>
<i>Some Statistics Pertinent to Instruction and Research</i>	<i>15</i>
1. <i>Composition of Academic Staff</i>	
2. <i>Curricula of Instruction (Academic Year 1985-86)</i>	
3. <i>Number of Courses offered (Academic Year 1984-85)</i>	
4. <i>Student Enrollment (Academic Year 1983 - 84, 1984 - 85)</i>	
5. <i>Number of Graduates (Academic Year 1982 - 83, 1983 - 84)</i>	
6. <i>Research Programs and Research Fund (Fiscal Year 1985)</i>	
<i>Annual Budget</i>	<i>28</i>
<i>Libraries</i>	<i>28</i>
<i>Laboratories and Research Facilities</i>	<i>28</i>
<i>Fees</i>	<i>29</i>
<i>Scholarships and Financial Assistance</i>	<i>30</i>
<i>Student Services</i>	<i>30</i>
<i>Community Services</i>	<i>30</i>
<i>International Cooperation</i>	<i>31</i>
<i>Publications</i>	<i>31</i>

CONCISE INFORMATION ABOUT KASETSART UNIVERSITY

(as of May, 1985)

GENERAL

- Date of Foundation :** February 2, 1943
- Postal Address :** 50 Paholyothin Road
Bangkhen, Bangkok 10900
Thailand
- Cable :** UNIKASE 10900
- Telephone :** 5790113 (300 lines ext.)
Rector's Office : 5792291, 5792292, 5792293
Kamphaengsaen campus : 034 - 24239
- Type :** A government institution of higher learning under the Ministry of University Affairs
- School Sessions :** First semester - June to October
Second semester - November to March
Summer session - April to May
- Medium of Instruction :** Thai is the medium of instruction in practically all courses. English is also used in certain upper-division and graduate courses, but to a very limited extent.

BRIEF HISTORY

Kasetsart University emerged initially as College of Agriculture offering a 3-year non-degree curriculum under the Ministry of Agriculture. On February 2, 1943, it was conferred a university status through amalgamation of the existing Colleges of Agriculture and Forestry of the Ministry of Agriculture at that time and creation of two additional faculties, namely, Faculty of Cooperative Science (now Economics and Business Administration) and Faculty of Fisheries. Subsequent legislation in 1955 brought about the inclusion of two other faculties, namely, Faculty of Veterinary Medicine from the University of Medical Science (now Mahidol University) and Faculty of Engineering from the Royal Irrigation Department of the Ministry of Agriculture. In 1966, Faculty of Science and Arts, and Graduate School, a coordinating unit for graduate study program of all disciplines, were established; and in 1969, 1974 and 1980, Faculties of Education, Social Sciences and Agro-Industry came into existence, respectively. In 1981, the Faculty of Science and Arts was split into Faculty of Science and Faculty of Humanities. Thus, at present, there are altogether 12 faculties in the University, namely, Agriculture, Economics and Business Administration, Education, Engineering, Fisheries, Forestry, Humanities, Science, Social Sciences, Veterinary Medicine, Agro-Industry and Graduate School.

Kasetsart University is the first university in Thailand to offer degree programs in agricultural sciences. Such offering was dictated primarily by the large demand for well-trained manpower for the development of agriculture and related fields in the country. The ensuing large increase in the need for degree holders in many other fields in addition to agriculture and related sciences as a result of the on-going intensive effort in national development has led Kasetsart University to develop into a full-fledged university during recent years. Additional faculties and units of faculty rank have consequently been instituted to take charge of the newly developed programs. Such units are Institute of Food Research and Product Development, Office of Extension and Training, Office of University Library, Research and Development Institute and Office of University Computer. On the basis of the history of its development, it may be noted that in many aspects Kasetsart University fits well with the "Land Grant" model of universities in The United States.

Recognizing the need to provide a leading role in manpower training for agriculture and rural development that Kasetsart University must contribute, it has conducted, with assistance from various appropriate sources --the Rockefeller Foundation, the University of California, the Oregon State University, and Cornell University teams, --the feasibility studies of university development and expansion to meet this need with an effective but flexible approach. Another compelling factor for the university expansion is the rapid enlargement of highschool graduates during 1960's and 1970's who must seek and compete for rather limited seats available at the country institutions of higher learning. This fact was more than confirmed when Kasetsart student enrolment surpassed the original projected target for 1980 of 5,800 by 1970. With the original campus at Bangkhen Kasetsart-University could not expect to make any substantial development in terms of accommodation and seating capacity, for it must share the premise with the Ministry of Agriculture and Cooperatives leaving an area of approximately 125 hectares for its exclusive use. With this prospect and constraints, the University finally adopted a development project, with the blessing of the Thai Government and with the financial assistance of the IBRD loan to develop the second campus on a 1,250-hectare site in Kamphaengsaen district, Nakorn Pathom province, 80 kilometres west of Bangkok. The Project called for the new establishment of strong teaching and research facilities in agricultural sciences. The original Bangkhen campus would be developed in such a manner that it would strengthen instruction and research on both campuses. The project was officially started in May 1972 and completed in July 1980. Excellent additional research and extension facilities have been added through the grant-aid program of the Government of Japan that has greatly accentuated the service capability of the Kamphaengsaen Campus when employed in joint effort with other government agencies and universities.

Instruction on the new campus was started in November 1979 to some 1,000 junior students in agriculture, agricultural education, agricultural and irrigation engineering and veterinary medicine. The newly completed facilities provide the first phase of the second campus development which is to be continued stepwise in order to accommodate freshmen and sophomores in certain appropriate disciplines to bring the enrolment up to 3,000, 4,500, 6,000 until the full development is reached providing for 12,000 students. The Bangkhen

campus is now serving some 10,500 undergraduates and graduates. It is also anticipated that Bangkok facilities shall, in addition to strengthening the Kamphaengsaen development, also serve the new requirements that Kasetsart University must expand and strengthen services in the fields of business, education, industry and health.

FUNCTIONS AND ORGANIZATION

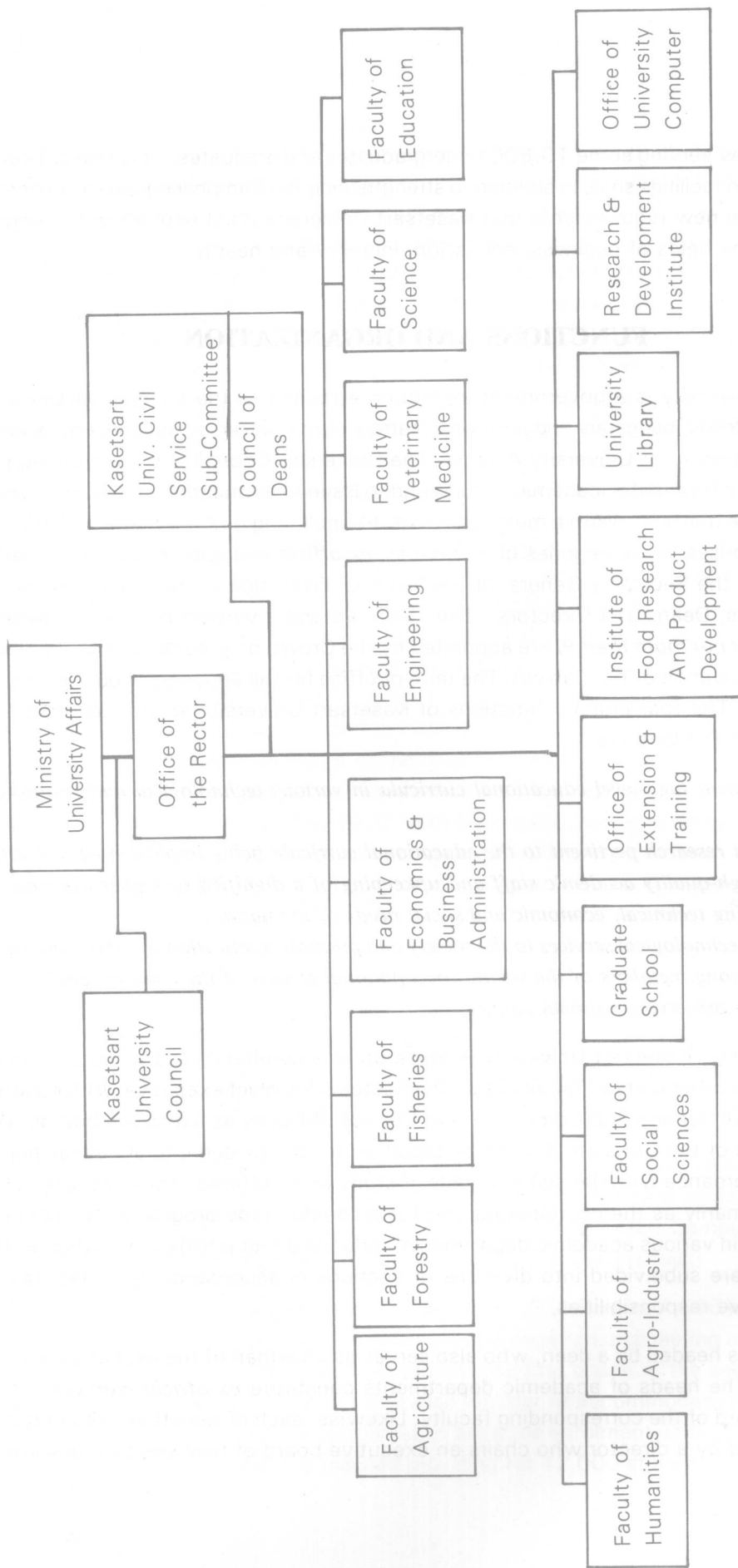
Kasetsart University is a government institution attached to the Ministry of University Affairs. Academic, budgetary and personnel matters of the University are under the supervision of the Ministry of University Affairs. The University Council is the governing body empowered to formulate academic policies and to issue rules and regulations on university administrative matters. With a membership of 34, including its Chairman, the University Council comprises two categories of members: *ex-officio* and appointed. The *ex-officio* members are the Secretary-General of the National Education Commission, the Rector, Vice - Rectors, Deans and Directors. The chairman and a varying number of members (*at least 4 but not more than 9*) are appointed by the Crown on grounds of merit and upon the recommendation of the Cabinet. The term of office for the appointed Council members is two years. The four primary functions of Kasetsart University as well as other state universities in Thailand are :-

1. *To implement high-level educational curricula in various technological and professional fields,*
2. *To conduct research pertinent to the educational curricula being implemented, the attainment of high-quality academic staff and upkeeping of a dignified of higher learning, and the prevailing technical, economic and social needs of the nation,*
3. *To render technological services to the society and promote application of desirable research findings among members of the various occupational groups of the country, and*
4. *To assist in preserving national culture.*

Administratively, Kasetsart University is made up of a number of academic units called "*faculty*" and other units of faculty rank: the Rector is the chief executive, with Kasetsart University Civil Service Sub-Committee and Council of Deans as executive boards. With the exception of the Graduate School, all faculties are subdivided into academic departments in accordance with the distinct fields of study being offered. The Graduate School functions primarily as the coordinating unit for graduate study programs that are being implemented in various academic departments under its direct jurisdiction. Other units of faculty rank are subdivided into divisions or sections in accordance with the areas of their respective responsibilities.

Each faculty is headed by a dean, who also serves as chairman of the executive board of the faculty. The heads of academic departments constitute *ex-officio* members of the executive board of the corresponding faculty. Likewise, each of the other units of faculty rank is headed by a director who chairs an executive board of nine selected university -

ORGANIZATION CHART



wide staff members. The Graduate School is headed by a dean; a group of University-wide graduate staff members constitute its executive board with the dean as chairman.

UNIVERSITY ADMINISTRATIVE OFFICERS

Rector :

Chongrak Prichananda, B.S.F. (University of the Philippines), M.S. (Oregon State University), Ph.D. (State University of New York); Assistant Professor of Forest Products.

Vice-Rectors :

Krisna Chutima (Mrs.), B.Sc. (1st - class Hons.) (Chulalongkorn), M.S. (University of California at Berkeley), Ph.D. (Purdue University); Professor of Chemistry.

Kian Eadkeo, B.S.F. (Kasetsart), M.F. (Yale University), Ph.D. (University of Georgia); Assistant Professor of Forestry.

Boonsom Suwachirat, B.Eng. (Kasetsart), M.Eng. (SEATO Graduate School); Associate Professor of Civil Engineering.

Sam-arng Srinilta, B.S.A. (cum laude) (University of the Philippines) M.S. (University of California at Berkeley), Ph.D. (Iowa State University); Associate Professor of Soil Science.

Paiboon Paireepairit, B.S. Agr. (Kasetsart), M.S. (Kasetsart); Assistant Professor of Horticulture

University Librarian :

Piboonsin Watanapongse, B.A., M.A. (Chulalongkorn University).

Registrar :

Vicha Sukit, B.S. Agr. (Kasetsart), M.S., Ph.D. (University of the Philippines); Assistant Professor of Biology.

UNIVERSITY ADMINISTRATIVE STAFF

Director of Medical Service Center :

Bhinyo Kalayanamitr, M.D.

Chief of General Affairs Division :

Sermasuk Liewlom (Mrs.), B.A.

Chief of Personnel Division :

Pichitchai Pongudom, LL.B.

Chief of Finance Division :

Cheewan Senanarong (Mrs.), B.S. Agr.; Instructor of Horticulture

Chief of Planning Division :

Paisan Kingpetcharat, B.S. (Econ.) (Kasetsart); Assistant Professor of Economics

Chief of Student Affairs Division :

Araya Nual-Indra, M.Eng.; Assistant Professor of Civil Engineering

Chief of Educational Service Division :

Vicha Sukit, Ph.D.; Assistant Professor of Biology

Chief of Vehicle, Building and Physical Plant Division :

Manat Suchawipan, M.Sc. Assistant Professor of Biology

DEANS OF FACULTIES

Agriculture :

Prasan Yingchol, B.S. Agr. (Kasetsart), M.S. (Dacca University), D.Agr. (University of Vienna); Assistant Professor of Agronomy

Agro - Industry :

Tasanee Sorasuchart, B.S. (Chulalongkorn), M.S. (Oregon state University); Assistant Professor of Fishery Products

Economics and Business Administration :

Chamniem Boonma, B.S. (Kasetsart), M.S. (University of Hawaii), Ph.D. (University of Illinois), Assistant Professor of Agricultural Economics

Education :

Yupa Veravaidhaya (Miss.), B.Ed. (Chulalongkorn), M.A., Ed.D. (University of Northern Colorado); Assistant Professor of Education

Engineering :

Wanchai Pahnichaputt, B.Eng. (Chulalongkorn), M.S., Ph.D. (Purdue University), Assistant Professor of Mechanical Engineering

Fisheries :

Wit Tarnchalanukit, B.S. Fisheries (Kasetsart); Associate Professor of Aquaculture

Forestry :

Somsak Sukwong, B.S.F. (Hons.) (Kasetsart), M.F., Ph.D. (Colorado State University); Assistant Professor of Forest Biology

Humanities :

Singthong Pornnikom, B.A. (Mahamongkut), M.A. (BHU); Instructor of Philosophy and Religion

Science :

Sookpracha Vachanonda, B.S. (Chulalongkorn), M.S., Ph.D. (Oregon State University); Assistant Professor of Chemistry

Social Sciences :

Nipon Kantasewi, B.S., M.Ed. (University of California), Ph.D. (Pennsylvania State University); Professor of Sociology and Anthropology

Veterinary Medicine :

Pibul Chai-anan, D.V.M. (Kasetsart), Assistant Professor of Veterinary Surgery

Graduate School :

Yongyut Jiemchaisri, B.S., M.S., Ph.D. (University of Wisconsin); Assistant Professor of Chemistry

DIRECTORS OF UNITS OF FACULTY RANK**Institute of Food Research and Product Development :**

Bulan Phithakpol (Mrs.), B.S. (University of California), M.S. (Cal Poly)

Office of Extension and Training :

Phorn Suwanvajokkasikij, B.S. Agr. (Kasetsart), M.S. (Utah State University); Associate Professor of Agricultural Extension

Office of University Library :

Piboonsin Watanapongse (Mrs.), B.A. (Chulalongkorn)

Research and Development Institute (KURDI):

Kamphol Adulavidhaya, B.S. Agr. (Hons.) (Kasetsart), M.S. (Oregon State University), Ph.D. (Purdue University); Associate Professor of Agricultural Economics

Office of University Computer :

Yanyong Boonlong, B.S. (C.E.), M.S. (Computer Science); Assistant Professor of Civil Engineering

DIRECTORS OF CENTERS**National Agricultural Extension and Training Center :**

Poom Khumgliang, B.S. Agr., M.A. (C.D.), Assistant Professor of Agricultural Extension

National Corn and Sorghum Research Center :

Porn Rungchang, M.Sc.

National Swine Research and Training Center :

Charan Chantalakhana, Ph.D., Professor of Animal Science

Agricultural Machinery Center :

Banchaw Phaholyothin, M. Eng., Assistant Professor of Agricultural Engineering

Central Laboratory and Greenhouse Complex :

Vichai Korpraditskul, Ph.D., Assistant Professor of Plant Pathology

National Biological Control Research Center :

Banpot Napompeth, Ph.D., Assistant Professor of Entomology

Highland Agriculture

Pavin Punsri, M.S., Professor of Pomology

The Center for Applied Economics Research

Sopin Tongpan, Ph.D., Associate Professor of Agricultural Economics

CHAIRMAN OF STANDING COMMITTEES**Education Committee :**

Charan Chantalakhana, B.S., (Kasetsart), M.S., Ph.D. (Iowa State University), Professor of Animal Science.

Student Affairs Committee :

Vice - Rector (Boonsom Suwachirat)

Public Relations Committee :

Chacrit Chulakasewi, B.S. Agr. (Kasetsart)

Textbook and Instructional Material Production Committee :

Yongyut Jiemchaisri, B.S., M.S., Ph.D. (University of Wisconsin); Assistant Professor of Chemistry

Staff Housing Committee :

Natee Nilnopkun, D.V.M., Dip.in Vet. Anatomy (F.R.V.A.C., Denmark)

Sports Committee :

Boonsom Suwachirat, B.Eng. (Kasetsart), M.Eng. (SEATO Graduate School); Associate Professor of Civil Engineering.

HEADS OF ACADEMIC DEPARTMENTS

1. Faculty of Agriculture :

Department	Head
Agricultural Extension and Communication	<i>Poltip Komarakul</i> , B.S. Assistant Professor
Agronomy	<i>Sanan Chantkam</i> , Ph.D. Assistant Professor
Animal Science	<i>Charan Chantalakhana</i> , Ph.D. Professor
Entomology	<i>Sawarng Charoenying</i> , Ph.D. Assistant Professor
Farm Mechanics	<i>Aram Varanyanont</i> , B.Sc. Assistant Professor
Home Economics	<i>Priya Ketudat</i> , M.S. Assistant Professor
Horticulture	<i>Sompian Kasemsap</i> (Mrs.), M.S. Associate Professor
Plant Pathology	<i>Thira Sutabutra</i> , Ph.D. Associate Professor
Soil Science	<i>Somsak Wangnai</i> , Ph.D. Associate Professor

2. Faculty of Agro - Industry :

Department	Head
Biotechnology	<i>Supapong Puwapattanapan</i> , M.Tech. Instructor
Food Science and Technology	<i>Saisanom Praditduang</i> (Mrs.), M.S. Assistant Professor
Packaging Technology	<i>Thanong Pakruspan</i> , Ph.D. Associate Professor
Product Development	<i>Vichai Harutaitanasan</i> , M.Sc. Associate Professor

3. Faculty of Economics and Business Administration :

Department	Head
Accounting	<i>Vichitra Poonpermsub</i> (Mrs.), M.B.A. Associate Professor
Agricultural Economics	<i>Chaiwat Konjing</i> , Ph.D. Instructor

Business Administration	<i>Vasana Singhakowinta</i> (Mrs.), M.S. Associate Professor
Cooperative Science	<i>Smarn Tongsimar</i> , M.S. Assistant Professor
Economics	<i>Prajoed Sinsup</i> , Ph.D. Professor
Marketing	<i>Prasit Yamalee</i> , M.B.A. Instructor

4. Faculty of Education :

Department	Head
Education	<i>Kitiya Pornsajja</i> (Miss), M.A. Instructor
Educational Technology	<i>Pranee Nontamas</i> , M.A. Instructor
Physical Education	<i>Sanong Noppasong</i> , B.Ed. Instructor
Vocational Education	<i>Kanjana Chuatongdee</i> (Mrs.), M.A. Assistant Professor

5. Faculty of Engineering :

Department	Head
Agricultural Engineering	<i>Kamnuan Tanpan</i> , M.S. Assistant Professor
Civil Engineering	<i>Sompothi Vivithkeyoonvong</i> , Ph.D. Assistant Professor
Electrical Engineering	<i>Chamnarn Hawkiat</i> , Ph.D. Associate Professor
Industrial Engineering	<i>Pichit Sukchareonpong</i> , D.Eng. Assistant Professor
Irrigation Engineering	<i>Twiwach Samneangprasert</i> , M.S. Associate Professor
Mechanical Engineering	<i>Santi Viriyawit</i> , Ph.D. Instructor
Water Resources Engineering	<i>Chukiat Suppaisal</i> , M.Eng. Assistant Professor

6. Faculty of Fisheries :

Department	Head
Aquaculture	<i>Wiang Chuapohak</i> , Ph.D. Assistant Professor

Fishery Biology

Rassmee Sroi wattana, M.Sc.

Instructor

Fishery Management

Kungwan Juntarashote, M.S.

Instructor

Fishery Products

Amnuay Chotiyawong, M.S.

Assistant Professor

Marine Science

Chaloemwilai Chuensri, M.S.

Assistant Professor

7. Faculty of Forestry :

Department	Head
Conservation	<i>Kasem Chankoe</i> , Ph.D. Professor
Forest Biology	<i>Utud Kudindra</i> , Ph.D. Assistant Professor
Forest Engineering	<i>Chanchai Yarwudhi</i> , Ph.D. Instructor
Forest Management	<i>Lert Chantanaparb</i> , Ph.D. Assistant Professor
Forest Products	<i>Niyom Petchpud</i> , M.A. Instructor
Silviculture	<i>Choob Khemnark</i> , M.S. Associate Professor

8. Faculty of Humanities :

Department	Head
Career Science	<i>Kulasak Chayangam</i> , Ph.D. Associate Professor
Communication Arts	<i>Kanitta Attasampunna</i> , M.A. Assistant Professor.
Languages	<i>Chamai Dardarananda</i> (Mrs.), M.A. Assistant Professor
Library Science	<i>Somboon Saichamjunta</i> (Mrs.), M.A. Librarian
Linguistics	<i>Visamai Manomaipiboon</i> , M.A. Assistant Professor
Literature	<i>Montri Umavijani</i> , M.A. Assistant Professor
Philosophy and Religion	<i>Phrom Srivongse</i> , M.A. Instructor

9. Faculty of Science :

Department	Head
Botany	<i>Ath Boonitee</i> , M.S. Associate Professor
Chemistry	<i>Sukanda Rojanasoonthon</i> (Mrs.), M.S. Assistant Professor
Genetics	<i>Amara Kampiranon</i> (Mrs.), Ph.D. Instructor
Mathematics	<i>Tasneya Bhatraramongkol</i> (Mrs.), M.S. Instructor
Microbiology	<i>Malee Suwana-Adth</i> (Mrs.), Ph.D. Instructor
Physics	<i>Vidhurn Hongsumalya</i> , M.S. Associate Professor
Applied Radiation and Radioisotopes	<i>Sumin Smutkupta</i> , Ph.D. Associate Professor
Statistics	<i>Songsiri Taesombat</i> (Mrs.), Ph.D. Assistant Professor
Zoology	<i>Lamom Busapavanich</i> (Miss), M.S. Assistant Professor

10. Faculty of Social Sciences :

Department	Head
Geography and History	<i>Ruchaniwan Vechaprut</i> , (Mrs.), M.Ed. Assistant Professor
Law	<i>Somsith Wichitpong</i> , LL.B. Assistant Professor
Political Science and Public Administration	<i>Sondhi Tejanant</i> , M.A. Assistant Professor
Psychology	<i>Paungpetch Wacharayoo</i> , (Mrs.), M.A. Assistant Professor
Sociology and Anthropology	<i>Narong Srisawas</i> , Ph.D. Assistant Professor

11. Faculty of Veterinary Medicine :

Department	Head
Anatomy	<i>Boontham Chongcharoen</i> , D.V.M. Assistant Professor
Medicine	<i>Chusri Promvaratorn</i> , D.V.M. Assistant Professor

Obstetrics, Gynaecology and Animal Reproduction	<i>Samutra Sirivejpandu</i> , D.V.M. Assistant Professor
Pathology	<i>Pirom Srivoranat</i> , D.V.M. Assistant Professor
Pharmacology	<i>Perapon Yoosawas</i> , D.V.M. Assistant Professor
Physiology	<i>Sopa Sorndee</i> , D.V.M. Assistant Professor
Surgery	<i>Prapan Ketsang</i> , D.V.M. Assistant Professor

AFFILIATED INSTITUTIONS

1. National Corn and Sorghum Research Center

This Center is a joint undertaking since 1966 between Ministry of Agriculture and Cooperatives and Kasetsart University with a primary purpose of intensive utilization of the available technical know-how and resources of the two government agencies in the promotion of corn and sorghum production in the country. It is located at the Suwan Farm of the University - in Pakchong District of Saraburi Province, about 150 kilometers northeast of Bangkok. Its activities have been supported by/in cooperation with many agencies --notably the Rockefeller Foundation, CIMMYT, and ICRISAT. Improved seeds of high yield and good downy mildew resistance together with new management techniques are now giving farmers better production. Training activities for local and international personnels of various levels have been conducted at the Center.

2. National Swine Research and Training Center

This is another joint effort between Ministry of Agriculture and Cooperatives and Kasetsart University with intensive research and non-degree training in the various aspects of swine production as the common interest. The Center aims to provide reliable breeding stocks, improved management for efficient production and coordinated efforts between farmers and government/private sectors in building a stable nationwide swine production. Its headquarters are located at Kamphaengsaen campus of Kasetsart University, with stations for breeding stock and for management research supported by the Ministry.

3. National Biological Control Research Center (NBCRC)

Through the agreement of the National Research Council of Thailand and Kasetsart University, the National Biological Control Research Center was established in 1973 to handle all works related to biological control of pests of agricultural as well as public health importance.

NBCRC is operated in initial phase by a subcommittee consisting of representatives from various institutional collaborators. The cooperating agencies include Departments of

Agriculture, Fisheries, and Forestry of the Ministry of Agriculture and Cooperatives; Ministry - of Public Health; and other Universities --Mahidol, Chiangmai, Khonkaen, and Prince of Songkhla.

Eventually the University will be solely responsible for operation and organization of NBCRC - in close collaboration with cooperating agencies. The national headquarters will be located - on Kamphaengsaen campus with regional subcenters representing various geographical areas of Thailand in Bangkok, Chiang Mai, Khonkaen and Hadyai. With its international context in nature and scope of work, NBCRC is also engaged in cooperative projects with other of institutions outside the country such as BIOTROP, Indonesia, State of Hawaii, Department of Agriculture. US Department of Agriculture. Cooperation is also being sought - and given to other international agencies such as the Commonwealth Institute of Biological Control (CIBC), International Organization of Biological Control (IOBC), and other interested agencies.

