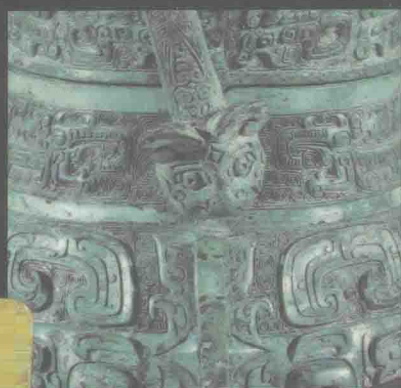
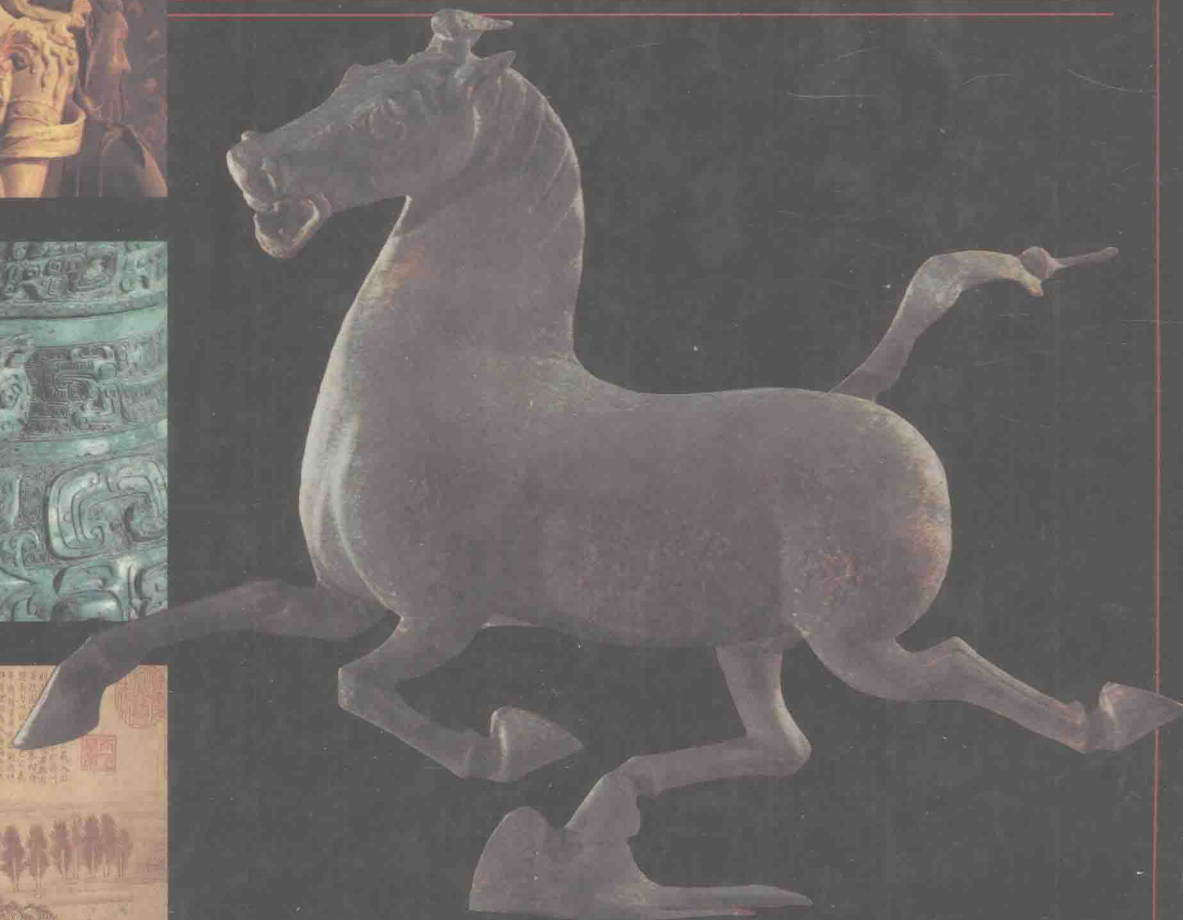


Third Edition



THE ARTS OF CHINA



MICHAEL SULLIVAN

Michael Sullivan

THE ARTS OF
CHINA

Third Edition

University of California Press
Berkeley • Los Angeles • London

University of California Press
Berkeley and Los Angeles, California

University of California Press, Ltd.
London, England

Copyright © 1967, 1973, 1977, 1984 by Michael Sullivan. All rights reserved.

Library of Congress Cataloging in Publication Data

Sullivan, Michael, 1916–
The arts of China.

Bibliography: p.

Includes index.

1. Art, Chinese. I. Title.

N7340.S92 1983 709'.51 82-16027

ISBN 0-520-04917-9

ISBN 0-520-04918-7 (pbk.)

Printed in the United States of America

5 6 7 8 9

List of Maps and Illustrations

MAPS

- 1 Modern China, *page xxi*
- 2 China in the Neolithic period, *page 4*
- 3 Ancient China with major Shang and Chou Dynasty sites, *page 14*
- 4 China in the Warring States period, *page 41*
- 5 China in the Han Dynasty, *page 55*
- 6 China during the Three Kingdoms and Six Dynasties period, *page 86*
- 7 The spread of Buddhism from India into central and eastern Asia, *page 97*
- 8 China in the T'ang Dynasty, *page 115*
- 9 Ch'ang-an in the T'ang Dynasty, *page 116*
- 10 China in the Sung Dynasty, *page 142*
- 11 Kiln sites in the Hangchow area, *page 176*
- 12 Artistic centres of southeastern China, *page 201*

ILLUSTRATIONS

- 1 Pan-p'o-ts'un, Shensi. Part of the Neolithic village after excavation; now a museum, *page 5*
- 2 Pan-p'o-ts'un, Shensi. Neolithic houses, reconstructed. After Kwang-chih Chang, *page 6*
- 3 Bowl. Diam. 18 cm. Excavated at P'ei-hsien, Kiangsu. People's Republic of China, *page 7*
- 4 Jar. Ht. 17.2 cm. Excavated in Ning-yang-hsien, Shantung. People's Republic of China, *page 7*
- 5 Bowl. Diam. 44.5 cm. Excavated in Pan-p'o-ts'un, Shensi. People's Republic of China, *page 8*
- 6 Stemcup. Ht. 19.2 cm. Excavated at Wei-fang, Shantung. People's Republic of China, *page 8*
- 7 Funerary urn. Ht. 40 cm. Excavated at Pan-shan, Kansu. Ostasiatiska Museet, Stockholm, *page 9*
- 8 Pitcher. Ht. 29.7 cm. Excavated at Wei-fang, Shantung. People's Republic of China, *page 10*
- 9 Hsien steamer. Excavated at Chengchow, Honan, *page 11*
- 10 Scraper or dagger. L. about 13 cm. Excavated in Pihsien, Kiangsu. People's Republic of China, *page 11*
- 11 Ritual vessel, *chüeh*. Ht. 25.6 cm. Excavated at Yen-shih, Honan. Cultural Office of Honan, Yen-shih-hsien, *page 11*
- 12 Ritual vessel, *ting*. Ht. 100 cm. Excavated at Chengchow, Honan. People's Republic of China. Photo by Seth Joel, *page 13*
- 13 Ritual vessel, *ting*. Ht. 48 cm. Excavated at P'an-lung-ch'eng, Hupei. Hupei Provincial Museum, *page 15*
- 14 Reconstruction of a house at Hsiao-t'un, Anyang. After Shih Ch'ang-ju and Kwang-chih Chang, *page 17*
- 15 Replica of excavated tomb at Wu-kuan-ts'un, Anyang, *page 18*
- 16 Carriage burial, showing bronze fittings in place, Anyang, *page 19*
- 17 Ritual vessel, *tsun*. Ht. 22.8 cm. Found near Changsha, Hunan. Hunan Provincial Museum, *page 19*
- 18 Ox-head. L. 29.2 cm. Excavated at Hou-chia-chuang, Anyang. Academia Sinica, Taipei, *page 19*
- 19 Urn. Ht. 33.2 cm. From Anyang. Freer Gallery of Art, Washington, D. C., *page 20*
- 20 *Tsun* vase. Ht. 28.2 cm. Excavated at Chengchow, Honan. People's Republic of China, *page 21*
- 21 *Ya-hsing*, *page 22*
- 22 Sectional clay moulds for bronze-casting. After Shih Ch'ang-ju and Kwang-chih Chang, *page 22*
- 23 Ritual vessel, *fang ting*. Ht. 42.5 cm. From the tomb of Fu Hao, Anyang. Institute of Archaeology, Peking, *page 22*

- 24 Major types of Shang and Chou bronze vessels. After Kwang-chih Chang, *page 23*
- 25 Ritual vessel, *yu*. Ht. 36.5 cm. Freer Gallery of Art, Washington, D. C., *page 24*
- 26 Ritual vessel, *chia*. Ht. 33 cm. Center of Asian Art and Culture, the Avery Brundage Collection, San Francisco, *page 25*
- 27 Ritual vessel, *li-ho*. Ht. 25.4 cm. Center of Asian Art and Culture, the Avery Brundage Collection, San Francisco, *page 25*
- 28 Ritual vessel, *p'ou*. Ht. 20.4 cm. The Seligman Collection, the Arts Council of Great Britain, London, *page 25*
- 29 Ritual vessel, *kuang*. Ht. 24.2 cm. Fogg Museum of Art, Cambridge, Mass., *page 26*
- 30 Ritual vessel, *chia*. Ht. 34.2 cm. Nelson Gallery-Atkins Museum, Kansas City, Mo., *page 26*
- 31 Ritual vessel, *ku*. Ht. 33.2 cm. City Art Museum, St. Louis, Mo., *page 26*
- 32 Ritual vessel, *tsun*. Ht. 47 cm. Excavated at Funan, Anhui. People's Republic of China, *page 27*
- 33 Dagger-axe, *ko*. L. 28 cm. From Anyang. A. Hells-tröm Collection, Mölndal, *page 27*
- 34 Axe, *ch'i*. Ht. about 28 cm. From Yi-tu, Shantung. People's Republic of China, *page 27*
- 35 Knife with ibex head. L. 27.5 cm. From Anyang, *page 28*
- 36 Stone and jade figurines. Ht. 7-9 cm. From the tomb of Fu Hao. Institute of Archaeology, Peking, *page 29*
- 37 Axe-blade. L. 15.9 cm. From Anyang. Center of Asian Art and Culture, the Avery Brundage Collection, San Francisco, *page 30*
- 38 Carved bone handle. L. 15 cm. Excavated at Anyang. Academia Sinica, Taipei, *page 30*
- 39 Chime carved with tiger design. L. 84 cm. From tomb at Wu-kuan-ts'un, Anyang. People's Republic of China, *page 30*
- 40 Hoard of bronzes. Excavated at Chuang-po, Fufeng, Shensi. Photo Cultural Relics Bureau, Peking, *page 33*
- 41 Tiger, one of a pair. L. 75.2 cm. Freer Gallery of Art, Washington, D. C., *page 35*
- 42 Ritual vessel, *lei*. Ht. 45.2 cm. From K'o-tso-hsien, Liaoning. Liaoning Provincial Museum, *page 35*
- 43 Ritual vessel, *fang-i*. Ht. 35.1 cm. Freer Gallery of Art, Washington, D. C., *page 35*
- 44 Ritual vessel, *yi*. L. 36.5 cm. British Museum, London, Mrs. Walter Sedgwick Bequest, *page 36*
- 45 Ritual vessel, *kuai*. Ht. 30.4 cm. Nelson Gallery-Atkins Museum, Kansas City, Mo., *page 36*
- 46 Ritual vessel, *hu*. Ht. 60.6 cm. Center of Asian Art and Culture, the Avery Brundage Collection, San Francisco, *page 36*
- 47 Ritual vessel, *hu*. Ht. 52 cm. People's Republic of China, *page 36*
- 48 Ritual and funerary jades, *page 37*
- 49 Ritual tube, *tsung*. Ht. 21.5 cm. British Museum, London, *page 38*
- 50 Jar. Ht. 27.5 cm. From a tomb at Pei-yao-ts'un, Loyang, Honan. People's Republic of China, *page 38*
- 51 Chariot burial. Lui-li-ko, Hui-hsien, Honan, *page 42*
- 52 Mythical winged animal. L. about 40 cm. From Shih-chia-chuang, Hopei. People's Republic of China, *page 43*
- 53 Ritual vessel, *ting*, with reversible cover, "Li-yü style." Ht. 23.5 cm. Center of Asian Art and Culture, the Avery Brundage Collection, San Francisco, *page 44*
- 54 Flask, *pien-hu*. Ht. 31.1 cm. Freer Gallery of Art, Washington, D. C., *page 44*
- 55 Ritual vessel, *ting*. Ht. 15.2 cm. Probably from Chin-ts'un, Loyang. The Minneapolis Institute of Arts, *page 44*
- 56 Harness plaques. Upper, l. 11.4 cm., Freer Gallery of Art, Washington, D. C.; lower, l. 11.5 cm., British Museum, London, *page 45*
- 57 Bell, *po*. Ht. 66.4 cm. Freer Gallery of Art, Washington, D. C., *page 45*
- 58 Bell, *po*. Detail of decoration on top. Freer Gallery of Art, Washington, D. C., *page 46*
- 59 Rack of bells from tomb at Sui-hsien, Hupei. Ht. 273 cm. Hupei Provincial Museum, Wuhan, *page 46*
- 60 Striking the bells. From a rubbing of a third-century A. D. stone relief in the tomb at I-nan, Shantung, *page 46*
- 61 Ritual vessel, *hu*. Ht. 39.3 cm. Center of Asian Art and Culture, the Avery Brundage Collection, San Francisco, *page 47*
- 62 Belt-hook. L. 15.7 cm. Fogg Art Museum, Cambridge, Mass., Grenville R. Winthrop Bequest, *page 47*
- 63 Miniature vessels. Excavated at Ch'ang-p'ing. People's Republic of China, *page 48*
- 64 Covered bowl. Ht. 16.5 cm. Probably from Shouchou, Anhui. Honolulu Academy of Arts, *page 49*
- 65 Sketch of reconstructed tomb showing lining of pit, tomb chamber, and triple coffin. Ma-wang-tui, Changsha, Hunan. Drawn by David Meltzer. © 1974 National Geographic Society, *page 50*
- 66 Painted figurines from tombs at Changsha, Hunan. After Kwang-chih Chang, *page 50*

- 67 Cult object or guardian in the form of a horned, long-tongued creature eating a snake. Ht. 195 cm. Excavated in Hsin-yang, Honan. People's Republic of China, *page 51*
- 68 Drawing of drum or gong stand. Ht. 163 cm. From Hsin-yang, Honan. People's Republic of China, *page 51*
- 69 Woman with dragon and phoenix. Ht. 30 cm. From Changsha, Hunan. People's Republic of China, *page 51*
- 70 Bowl. Diam. 35.4 cm. Seattle Art Museum, Eugene Fuller Memorial Collection, *page 52*
- 71 Designs on an inlaid bronze *hu*, *page 52*
- 72 Rubbing of back of a mirror. Diam. 6.7 cm. Excavated from Kuo State Cemetery at Shang-ts'un-ling, Honan. People's Republic of China, *page 52*
- 73 Mirror, Loyang type. Diam. 16 cm. Museum of Fine Arts, Boston, *page 52*
- 74 Mirror, Shou-chou type. Diam. 15.3 cm. Ashmolean Museum, Oxford, *page 52*
- 75 Chain of four discs with linking collars, carved from a single piece of jade. L. 21.5 cm. British Museum, London, *page 53*
- 76 Two concentric *huan* discs with dragons. Diam. of outer disc 16.5 cm. Nelson Gallery-Atkins Museum, Kansas City, Mo., *page 53*
- 77 The hunt among mountains. Former Hosokawa Collection, Tokyo, *page 57*
- 78 Seated Buddha in *abhaya-mudrā*. Rubbing of a relief in a shaft tomb at Chiating, Szechwan, *page 58*
- 79 Gateway to a palace or mansion. Rubbing from brick relief. Ht. 41 cm. From Szechwan. People's Republic of China, *page 59*
- 80 Horse and cavalryman. Ht. of cavalryman 180 cm. From tomb-pit of Ch'in Shih-huang-ti, Lin-t'ung, Shensi. Photo by Seth Joel, *page 60*
- 81 Isometric sketch of a stone tomb at I-nan, Shantung, *page 61*
- 82 Horse trampling on a barbarian archer. Ht. 188 cm. Hsing-p'ing, Shensi. People's Republic of China, *page 62*
- 83 Warrior. Ht. 182 cm. From the tomb pit of Ch'in Shih-huang-ti, Lin-t'ung, Shensi, *page 63*
- 84 Rhinoceros. L. 57.8 cm. Found in Hsing-p'ing, Shensi. People's Republic of China, *page 64*
- 85 Lamp held by kneeling servant-girl. Ht. 48 cm. From the tomb of Tou Wan (died c. 113 B.C.), Man-ch'eng, Hopei. People's Republic of China, *page 64*
- 86 Pacing horse poised on a swallow with wings outstretched. L. 45 cm. From a tomb at Lei-t'ai, Wu-wei, Kansu. People's Republic of China, *page 65*
- 87 Top of memorial pillar (*ch'üeh*) for a member of the Shen family. Ch'ü-hsien, Szechwan, *page 66*
- 88 The archer Yi, the *Fu-sang* tree, and a mansion. Detail of rubbing from a stone relief in the tomb shrine of Wu Liang, Chia-hsiang, Shantung, *page 66*
- 89 Shooting birds on a lake shore, and harvesting. Moulded pottery tile. Ht. 42 cm. From Kuang-han, Szechwan. People's Republic of China, *page 68*
- 90 Guests arriving for the funeral feast. Detail of a wall painting. From a tomb in Liao-yang, northeastern China, *page 68*
- 91 Gentlemen in conversation. Detail of a painted pottery tile. Ht. 19 cm. Museum of Fine Arts, Boston, *page 69*
- 92 Paragons of filial piety. Lacquer painting on basket-work box. Ht. of figures about 5 cm. From Lo-lang, Korea. National Museum, Seoul, *page 70*
- 93 Detail of a funerary banner, *fei i*. From Tomb No. 1 at Ma-wang-tui, Changsha, Hunan. People's Republic of China, *page 71*
- 94 Covered square-section jar, *fang-hu*. Ht. 50.5 cm. From a tomb at Ma-wang-tui, Changsha, Hunan. People's Republic of China, *page 71*
- 95 Funerary banner from Ma-wang-tui, Changsha. Ht. 205 cm. Line drawing, *page 72*
- 96 Fairy mountain incense burner, *Po-shan hsiang-lu*. Ht. 26 cm. From the tomb of Liu Sheng (died 113 B.C.) at Man-ch'eng, Hopei. People's Republic of China, *page 73*
- 97 Drum-shaped container for cowrie shells, with modelled sacrificial scene. Diam. 34 cm. From Shih-chai-shan, Yunnan. People's Republic of China, *page 73*
- 98 Carriage fittings. L. 18.4 cm., 21.5 cm., 9.5 cm. Center for Asian Art and Culture, the Avery Brundage Collection, San Francisco, *page 74*
- 99 TLV-type cosmological mirror. Diam. 20.3 cm. Formerly Raymond A. Bidwell Collection, Springfield, Mass, *page 75*
- 100 Immortals playing *liu-po*. Rubbing from a stone relief in a tomb at Hsin-chin, Szechwan, *page 76*
- 101 Mirror with Taoist motifs. Diam. 13.7 cm. Center of Asian Art and Culture, the Avery Brundage Collection, San Francisco, *page 76*
- 102 "Winged cup," *yü-shang*. L. 13.2 cm. Freer Gallery of Art, Washington D.C., *page 77*
- 103 Head and shoulders of a horse. Ht. 18.9 cm. Victoria and Albert Museum, London, *page 77*
- 104 Burial suit. L. 188 cm. From the tomb of Liu Sheng (died 113 B.C.) at Man-ch'eng, Hopei. People's Republic of China, *pages 78-79*
- 105 Figured silk fabric. From Noin-Ula, Mongolia. Hermitage Museum, Leningrad, *page 80*
- 106 Woven silk textile. From Tomb No. 1 at Ma-wang-tui, Changsha, Hunan. People's Republic of China, *page 80*

- 107 Silk panel from Noin-Ula. Line drawing, *page 80*
- 108 Jar, *hu*. Ht. 36.5 cm. Nelson Gallery–Atkins Museum, Kansas City, Mo., *page 81*
- 109 The hunt among mountains. Relief on the shoulder of a pottery *hu*, *page 81*
- 110 Watchtower. Ht. 120 cm. Royal Ontario Museum, Toronto, *page 82*
- 111 Dog. Ht. 35.5 cm. From Changsha, Hunan. Center of Asian Art and Culture, the Avery Brundage Collection, San Francisco, *page 82*
- 112 Tray with figures of musicians, dancers, acrobats, and spectators. L. 67.5 cm. From a tomb at Tsinan, Shantung. People's Republic of China, *page 83*
- 113 Stand for a lamp or "coin-tree." From a tomb at Nei-chiang, Szechwan. People's Republic of China, *page 83*
- 114 Basin, Yüeh ware. Diam. 28.8 cm. Walker Art Center, Minneapolis, Minn., *page 84*
- 115 T'ang copy of Wang Hsi-chih text in *hsing-shu*. Anonymous loan, the Art Museum, Princeton University. Private collection, *page 89*
- 116 After Ku K'ai-chih (c. 344–406). Illustration to *The Fairy of the Lo River*. Detail of a handscroll. Ht. 24 cm. Freer Gallery of Art, Washington, D.C., *page 90*
- 117 Hunting scene. Wall painting in the Tomb of the Wrestlers, T'ung-kou, Kirin, *page 91*
- 118 Attributed to Ku K'ai-chih. The emperor with one of his concubines. Illustration to *The Admonitions of the Instructress*. Detail of a handscroll. Ht. 25 cm. British Museum, London, *page 92*
- 119 Filial sons and virtuous women of antiquity. Panel from a wooden screen painted in lacquer. Ht. 81.5 cm. From a tomb dated 484 at Ta-t'ung, Shansi. People's Republic of China, *page 93*
- 120 The story of the filial Shun. Detail of an engraved stone slab from a sarcophagus. Ht. 61 cm. Nelson Gallery–Atkins Museum, Kansas City, Mo., *page 94*
- 121 Śākyamuni Buddha. Ht. 39.4 cm. Center of Asian Art and Culture, the Avery Brundage Collection, San Francisco, *page 97*
- 122 Types of pagoda, *page 98*
- 123 Twelve-sided pagoda of Sung-yüeh-ssu on Mount Sung, Honan, *page 98*
- 124 Mai-chi-shan, Kansu. View from the southeast. Photo by Dominique Darbois, *page 99*
- 125 Śākyamuni with attendant Buddha, perhaps Maîtresya. Ht. 13.7 m. Cave XX, Yünkang, Shansi. Photo by the author, 1975, *page 100*
- 126 Interior of Cave VII, Yünkang. Photo Mizuno and Nagahiro, *page 101*
- 127 Buddha group, south wall of Pin-yang-tung, Lungmen. Photo Mizuno and Nagahiro, *page 102*
- 128 The Wei Empress in procession with court ladies. Ht. 198 cm. Nelson Gallery–Atkins Museum, Kansas City, Mo., *page 104*
- 129 Stele illustrating the life of the Buddha and the teachings of the *Lotus Sūtra*. Ht. 156 cm. In Cave 133, Mai-chi-shan, Kansu. Photo by Dominique Darbois, *page 105*
- 130 Śākyamuni and Prabhūtaratna. Ht. 26 cm. Musée Guimet, Paris, *page 105*
- 131 The development of the Buddha image. After Mizuno, *page 106*
- 132 *Bodhisattva*. Ht. 188 cm. University of Pennsylvania Museum, Philadelphia, *page 106*
- 133 Minor deities and worshippers. Fragment of a stone relief from Wan-fō-ssu, Ch'üung-lai, Szechwan. People's Republic of China, *page 107*
- 134 Buddha preaching the law. Wall painting in Cave 249 (P 101), Tunhuang, *page 108*
- 135 The Buddha incarnate in a golden gazelle (the *Rürü Jātaka*). Wall painting in Cave 257 (P 110), Tunhuang. Photo by Dominique Darbois, *page 109*
- 136 Landscape with fabulous beings, on lower part of ceiling of Cave 249 (P 101), Tunhuang. Photo by Dominique Darbois, *page 109*
- 137 Chimera. L. 1.75 m. Nelson Gallery–Atkins Museum, Kansas City, Mo., *page 110*
- 138 Dragon. L. 19 cm. Fogg Museum of Art, Cambridge, Mass., *page 110*
- 139 Hsi K'ang (223–262), one of "Seven Sages of the Bamboo Grove." Brick tomb relief, Nanking, *page 111*
- 140 Horse. Ht. 24.1 cm. Said to be from a tomb near Loyang. Royal Ontario Museum, Toronto, *page 112*
- 141 Vase. Ht. 23 cm. From a tomb of 575 at Anyang, Honan. People's Republic of China, *page 112*
- 142 Flask. Ht. 19.5 cm. From a tomb of 575 at Anyang, Honan. People's Republic of China, *page 113*
- 143 Water container in the form of a lion-dog, Yüeh ware. L. 12.1 cm. Center of Asian Art and Culture, the Avery Brundage Collection, San Francisco, *page 113*
- 144 "Chicken ewer," Yüeh ware. Ht. 33 cm. Musée Guimet, Paris, *page 113*
- 145 Tumulus and processional way of tomb of Kao-tung (died 683) and Wu Tse-t'ien (died 705), Ch'ien-hsien, Shensi. Photo by the author, 1973, *page 117*
- 146 The main hall of Fu-kuang-ssu, Wu-t'ai-shan, Shansi. Redrawn by P. J. Darvall from *Ying-tsoo hsiéhshe hui-k'an*, *page 118*
- 147 The Western rigid truss and the Chinese beam-frame truss compared, *page 119*
- 148 The development and decline of the bracket order, *page 119*

- 149 Conjectural reconstruction of the Lin-te-tien of the Ta-ming Kung, Ch'ang-an. Drawn by T. A. Greeves, *page 120*
- 150 Pagoda of Hsin-chiao-ssu, Ch'ang-an, Shensi, *page 120*
- 151 Charger and his groom. L. 152 cm. University of Pennsylvania Museum, Philadelphia, *page 121*
- 152 Vairocana Buddha flanked by Ānanda, Kāśyapa, and attendant *bodhisattvas*. Feng-hsien-ssu, Lungmen, Honan. Photo by John Service, *page 122*
- 153 Standing Buddha, Udayāna type. Ht. 145 cm. From Hsiu-te Pagoda near Ch'ü-yang, Hopei. Victoria and Albert Museum, London, *page 122*
- 154 Seated Buddha (head restored). Ht. 115 cm. From Cave XXI, north wall, T'ien-lung-shan, Shansi. Fogg Art Museum, Cambridge, Mass., *page 123*
- 155 The sage Vimalakīrti. Detail of a wall painting in Cave 103 (P 137 M), Tunhuang, *page 125*
- 156 The paradise of Amitābha. Detail of a wall painting in the Kondō (Image Hall) of Hōryūji, Nara, Japan, *page 126*
- 157 The young Śākyamuni cuts off his hair. Landscape in the painterly style. Detail of a banner painting. From Tunhuang. British Museum, London, *page 127*
- 158 Pilgrims and travellers in a landscape. Landscape in the boneless style. Detail of wall painting in Cave 217 (P 70), Tunhuang, *page 128*
- 159 Yen Li-pen (died 673): the Emperor Hsüan of the Ch'en Dynasty. Detail of a handscroll of thirteen emperors from Han to Sui. Ht. 51 cm. Museum of Fine Arts, Boston, *page 129*
- 160 Female attendants. Detail of a wall painting in the tomb of Princess Yung-t'ai, Ch'ien-hsien, Shensi, *page 129*
- 161 Attributed to Sung Hui-tsung (1101-1125). *Court Ladies Preparing Silk*. Detail of a handscroll after a T'ang Dynasty original. Ht. 37 cm. Museum of Fine Arts, Boston, *page 130*
- 162 Attributed to Han Kan (active 740-760). *Night White*, a favourite horse of T'ang Ming Huang. Handscroll. Ht. 29.5 cm. Metropolitan Museum of Art, New York, *page 131*
- 163 Style of Wang Wei (?). *Riverside under Snow*. Part of a handscroll(?). Formerly Manchu Household Collection, *page 132*
- 164 Landscape in the linear style. Copy of wall painting in the tomb of I-te, Ch'ien-hsien, Shensi, *page 133*
- 165 Covered jar with swing handle, decorated with parrots amid peonies. Ht. 24 cm. Excavated at Ho-chia-ts'un, Sian. People's Republic of China, *page 134*
- 166 Octagonal wine cup. Ht. 6.5 cm. Excavated at Ho-chia-ts'un, Sian. People's Republic of China, *page 135*
- 167 "Lion-and-grape" mirror. Diam. 24.1 cm. Mr. and Mrs. Myron S. Falk, New York, *page 136*
- 168 Ewer with dancer and dragons in relief under a polychrome glaze. Ht. 24.2 cm. Royal Ontario Museum, Toronto, *page 137*
- 169 Jar decorated with splashed polychrome glaze. Ht. 17.8 cm. Center of Asian Art and Culture, the Avery Brundage Collection, San Francisco, *page 137*
- 170 Lobed bowl, Yüeh ware. Diam. 19 cm. Victoria and Albert Museum, London, *page 138*
- 171 Vase, possibly Hsing ware. Ht. 23.5 cm. Center of Asian Art and Culture, the Avery Brundage Collection, San Francisco, *page 138*
- 172 Jar, Huang-tao ware. Ht. 14.7 cm. The Barlow Collection, Sussex University, England, *page 139*
- 173 Camel carrying a band of musicians. Ht. about 70 cm. From a tomb at Sian, Shensi. People's Republic of China, *page 139*
- 174 Seated woman. Ht. about 25 cm. From a tomb at Loyang, Honan. People's Republic of China, *page 140*
- 175 Tomb guardian trampling on a demon. Ht. 122 cm. Center of Asian Art and Culture, the Avery Brundage Collection, San Francisco, *page 140*
- 176 Warrior supporting funerary platform. Ht. 60 cm. Tomb of Wang Chien, Chengtu, Szechwan, *page 141*
- 177 Winged lion in the style of the Warring States period. Ht. 21.5 cm. British Museum, London, *page 143*
- 178 Seven-tiered bracket for a palace hall. Illustration from the Sung Dynasty architectural manual, *Ying-tsoo fa-shih* (1925 edition), *page 144*
- 179 Twelve-sided pagoda of Fu-kung-ssu, Ying-hsien, Shansi, *page 144*
- 180 Lohan. Ht. 105 cm. From I-chou, Hopei. Metropolitan Museum of Art, New York, *page 145*
- 181 Interior of Lower Hua-yen-ssu, Ta-t'ung, Shansi. Photo by the author, 1975, *page 146*
- 182 Kuanyin. Ht. 225 cm. Nelson Gallery-Atkins Museum, Kansas City, Mo., *page 147*
- 183 Soul suffering the torments of hell. Stone relief sculpture on a cliff at Ta-tsu, Szechwan, *page 148*
- 184 In the manner of Shih K'uo (active mid-tenth century). *Two Minds in Harmony*. Part of a handscroll. Ht. 44 cm. National Museum, Tokyo, *page 149*
- 185 Attributed to Ku Hung-chung (tenth century). *A Night Entertainment of Han Hsi-tsai*. Detail of a handscroll. Ht. 29 cm. Palace Museum, Peking, *page 150*
- 186 Attributed to Li Lung-mien (c. 1040-1106). *Horse and Groom*. One of five tribute horses. Detail of a handscroll. Ht. 30.1 cm. Formerly Manchu Household Collection, *page 151*

- 187 Attributed to Li Ch'eng (919–967). *Buddhist Temple in the Hills after Rain*. Hanging scroll. Ht. 112 cm. Nelson Gallery–Atkins Museum, Kansas City, Mo., page 153
- 188 Kuo Hsi (eleventh century), *Early Spring*. Hanging scroll dated equivalent to 1072. Ht. 158.3 cm. National Palace Museum, Taipei, page 154
- 189 Fan K'uan (active late tenth to early eleventh century), *Travelling amid Mountains and Gorges*. Hanging scroll. Ht. 206.3 cm. National Palace Museum, Taipei, page 157
- 190 Chang Tse-tuan (late eleventh to early twelfth century), *Life along the River on the Eve of the Ch'ing-ming Festival*. Detail of a handscroll. Ht. 25.5 cm. Palace Museum, Peking, page 159
- 191 Attributed to Tung Yüan (tenth century). *Scenery along the Hsiao and Hsiang Rivers*. Detail of a handscroll. Palace Museum, Peking, page 160
- 192 Attributed to Su Tung-p'o (1036–1101). *Bare Tree, Bamboo and Rocks*. Handscroll. Ht. 23.4 cm. Palace Museum, Peking, page 161
- 193 Mi Yu-jen (1086–1165), *Misty Landscape*. Hanging scroll. Ht. 24.7 cm. Osaka Municipal Museum (former Abe Collection), page 162
- 194 Sung Hui-tsung (reigned 1101–1125), *The Five-Colour Parakeet*. Hanging scroll. Ht. 53 cm. Museum of Fine Arts, Boston, page 164
- 195 Attributed to Huang Chü-ts'ai (933–993). *Pheasant and Sparrows amid Rocks and Shrubs*. Hanging scroll. Ht. 99 cm. National Palace Museum, Taipei, page 166
- 196 Attributed to Li T'ang (c. 1050–1130). *A Myriad Trees on Strange Peaks*. Fan. Ht. 24.7 cm. National Palace Museum, Taipei, page 168
- 197 Attributed to Chao Po-chü (1120–1182). *Rocky Mountains along a River in Autumn*. Detail of a handscroll. Ht. 57 cm. Palace Museum, Peking, page 167
- 198 Ma Yüan (active 1190–1225), *On a Mountain Path in Spring*, with a poem by Yang Mei-tzu, consort of Ning-tsung. Album-leaf. Ht. 27.4 cm. National Palace Museum, Taipei, page 168
- 199 Hsia Kuei (active 1200–1230), *Pure and Remote View of Hills and Streams*. Detail of a handscroll. Ht. 46.5 cm. National Palace Museum, Taipei, page 169
- 200 Mu-ch'i (active mid-thirteenth century), *Evening Glow on a Fishing Village*, one of "Eight Views of the Hsiao and Hsiang Rivers." Detail of a handscroll. Ht. 33.2 cm. Nezu Art Museum, Tokyo, page 170
- 201 Mu-ch'i, *The White-Robed Kuanyin*, flanked by crane and gibbons. Hanging scrolls. Ht. 172 cm. Daitokuji, Kyoto, page 171
- 202 Ch'en Jung (active 1235–1260), *The Nine Dragons*. Detail of a handscroll. Ht. 46 cm. Museum of Fine Arts, Boston, page 172
- 203 Vase, *mei-p'ing*. Ht. 25.4 cm. Formerly in the collection of Mrs. Alfred Clark, Fulmer, Buckinghamshire, page 172
- 204 Funerary pillow, Ting ware. Ht. 15.3 cm. Center of Asian Art and Culture, the Avery Brundage Collection, San Francisco, page 173
- 205 Bottle with copper-bound rim, Ju ware. Ht. 24.8 cm. Percival David Foundation of Chinese Art, London, page 173
- 206 Pitcher. Ht. 22.9 cm. Center of Asian Art and Culture, the Avery Brundage Collection, San Francisco, page 173
- 207 Jar, Chün ware. Ht. 12.5 cm. Victoria and Albert Museum, London, page 174
- 208 Jar, Tz'u-chou ware. Ht. 20.5 cm. Center of Asian Art and Culture, the Avery Brundage Collection, San Francisco, page 174
- 209 Vase, *mei-p'ing*, Tz'u-chou ware. Ht. 49.5 cm. From Hsiu-wu, Honan. Center of Asian Art and Culture, the Avery Brundage Collection, San Francisco, page 174
- 210 Bowl, Tz'u-chou ware. Diam. 9 cm. Center of Asian Art and Culture, the Avery Brundage Collection, San Francisco, page 175
- 211 Traveller's flask. Ht. 37.5 cm. Private collection, Japan, page 175
- 212 Tea bowl, Fukien *temmoku* ware. Diam. 13 cm. Seligman Collection, Arts Council of Great Britain, London, page 176
- 213 Tripod incense burner, southern *kuan* ware. Ht. 12.9 cm. National Palace Museum, Taipei, page 177
- 214 Vase, Lung-ch'üan (*kinuta*) ware. Ht. 16.8 cm. National Palace Museum, Taipei, page 178
- 215 Vase, *ch'ing-pai* or *ying-ch'ing* ware. Ht. 13 cm. Seligman Collection, Arts Council of Great Britain, London, page 178
- 216 Incense burner, *liu-li* ware. Ht. 36 cm. Excavated in the remains of the Yüan capital Ta-tu (Peking). People's Republic of China, page 180
- 217 Sketch map of the Yüan Dynasty Ta-tu compared with Peking of Ming and Ch'ing, page 181
- 218 Aerial view of the heart of Peking, page 182
- 219 The Three Great Halls, San Ta Tien, of the Forbidden City, looking south. Drawn by T. A. Greeves, page 183
- 220 Ch'ien Hsüan (c. 1235–after 1301), *Wang Hsi-chih Watching Geese*. Detail of a handscroll. Ht. 23.2 cm. The Metropolitan Museum of Art, New York, page 184
- 221 Oracle bone script, *chia-ku-wen*. From Anyang. British Museum, London, page 185
- 222 Seal script, *chuan-shu*. Rubbing from one of the Stone Drums, page 185

- 223 Clerical script, *li-shu*. Rubbing from a stone slab. After Driscoll and Toda, *page 186*
- 224 Draft script, *ts'ao-shu*. Ch'en Shun (1483–1544), part of the inscription on his *Studies from Life*, 1538. Handscroll. National Palace Museum, Taipei, *page 186*
- 225 Regular script, *k'ai-shu*. Emperor Hui-tsung (reigned 1101–1125), part of his *Poem on the Peony*, written in the “thin gold” (*shou-chin*) style. Handscroll. National Palace Museum, Taipei, *page 186*
- 226 Running script, *hsing-shu*. Chao Meng-fu (1254–1322), part of his *Pao-t'u Spring Poem*. Handscroll. National Palace Museum, Taipei, *page 187*
- 227 Crazy draft script, *k'uang-ts'ao-shu*. Hsü Wei (1521–1593), poem. Handscroll. Wango H. C. Weng Collection, New York, *page 188*
- 228 Chao Meng-fu (1254–1322), *The Autumn Colours on the Ch'iao and Hua Mountains*. Detail of a handscroll dated equivalent to 1295. Ht. 28.4 cm. National Palace Museum, Taipei, *page 188*
- 229 Huang Kung-wang (1269–1354), *Living in the Fuch'un Mountains*. Detail of a handscroll dated equivalent to 1350. Ht. 33 cm. National Palace Museum, Taipei, *page 189*
- 230 Ni Tsan (1301–1374), *The Jung-hsi Studio*. Hanging scroll. Ht. 73.3 cm. National Palace Museum, Taipei, *page 190*
- 231 Wang Meng (1308–1385), *Thatched Halls on Mount T'ai*. Hanging scroll. Ht. 111 cm. National Palace Museum, Taipei, *page 191*
- 232 T'ang Ti, *Fishermen Returning through a Wintry Forest*. Hanging scroll. Ht. 144 cm. National Palace Museum, Taipei, *page 192*
- 233 Li K'an (active 1260–1310), *Ink Bamboo*. Detail of a handscroll. Nelson Gallery–Atkins Museum, Kansas City, Mo., *page 194*
- 234 Wu Chen (1280–1354), *Bamboo*. Album-leaf dated equivalent to 1350. Ht. 42.9 cm. National Palace Museum, Taipei, *page 194*
- 235 Dish. Diam. 42.9 cm. Percival David Foundation of Chinese Art, London, *page 195*
- 236 Vase and stand. Ht. 24.1 cm. Center of Asian Art and Culture, the Avery Brundage Collection, San Francisco, *page 195*
- 237 Kuanyin. Ht. 67 cm. Excavated in the remains of the Yüan capital, Ta-tu (Peking). People's Republic of China, *page 196*
- 238 Wine jar. Ht. 36 cm. Excavated at Pao-ting, Hopei. People's Republic of China, *page 197*
- 239 Pair of vases dedicated to a temple in Kiangsi in 1351. Ht. 63 cm. Percival David Foundation of Chinese Art, London, *page 197*
- 240 The Great Wall at Pa-ta-ling. Photo by Hedda Morrison, *page 199*
- 241 The Liu Yüan Garden in Soochow. Photo by Raymond Dawson, 1980, *page 200*
- 242 Arrangement of rocks from an abandoned garden in Soochow. Metropolitan Museum of Art, New York. Installation made possible by The Vincent Astor Foundation. © 1982, *page 202*
- 243 *Pomegranates*. Ht. 35.3 cm. British Museum, London, *page 203*
- 244 *Lotus Leaves and Root*. Ht. 25.8 cm. British Museum, London, *page 204*
- 245 Lü Chi (late fifteenth to early sixteenth century), *Pair of Wild Geese on a Snowy Bank*. Hanging scroll. Ht. 185 cm. National Palace Museum, Taipei, *page 204*
- 246 Shih-jui (mid-fifteenth century), *Strolling among Flowers*. Detail of a handscroll. Ht. 25.5 cm. Hashimoto Collection, Osaka, *page 205*
- 247 Tai Chin (1388–1452), *Fishermen*. Detail of a handscroll. Ht. 46 cm. Freer Gallery of Art, Washington, D.C., *page 206*
- 248 Shen Chou (1427–1509), *Landscape in the Manner of Ni Tsan*. Hanging scroll dated equivalent to 1484. Ht. 140 cm. Nelson Gallery–Atkins Museum, Kansas City, Mo., *page 207*
- 249 Shen Chou, *Returning Home from the Land of the Immortals*. Album-leaf mounted as a handscroll. Ht. 38.9 cm. Nelson Gallery–Atkins Museum, Kansas City, Mo., *page 207*
- 250 Wen Cheng-ming (1470–1559), *Cypress and Rock*. Handscroll dated equivalent to 1550. Ht. 26 cm. Nelson Gallery–Atkins Museum, Kansas City, Mo., *page 208*
- 251 T'ang Yin (1479–1523), *Gentleman Playing the Lute in a Landscape*. Detail of a handscroll. Ht. 27.3 cm. National Palace Museum, Taipei, *page 208*
- 252 Ch'iu Ying (c. 1494–1552+), *Saying Farewell at Hsün-yang*. Detail of a handscroll. Ht. 34 cm. Nelson Gallery–Atkins Museum, Kansas City, Mo., *page 210*
- 253 Tung Ch'i-ch'ang (1555–1636), *Dwelling in the Ch'ing-pien Mountains*. Hanging scroll. Ht. 224 cm. Wango H. C. Weng Collection, New York, *page 211*
- 254 Shao Mi (active 1620–1640). Leaf from an album of landscapes dated equivalent to 1638. Ht. 28.8 cm. Seattle Art Museum, *page 211*
- 255 Ch'en Hung-shou (1599–1652), *Portrait of the Poet Po Chü-i*, in the manner of Li Lung-mien. Detail of a handscroll dated equivalent to 1649. Ht. 31.6 cm. Charles A. Drenowatz Collection, Zurich, *page 212*
- 256 Wu Pin (c. 1568–1626), *Fantastic Landscape*. Hanging scroll dated equivalent to 1616. Ht. 250 cm. Hashimoto Collection, Takatsuki, *page 212*
- 257 Yen-lo-wang (Yama). Pottery dated equivalent to 1524. Ht. 83.8 cm. Royal Ontario Museum, Toronto, *page 213*

- 258 *Magician Changing a Bamboo Walking-Stick into a Dragon*. K'o-ssu silk tapestry. National Palace Museum, Taipei, page 213
- 259 Imperial dragon robe. Woven silk tapestry. Ht. 139.8 cm. Victoria and Albert Museum, London, page 214
- 260 Cup stand. Diam. of bowl 6.5 cm. Mrs. John Ridell, London, page 215
- 261 Rectangular dish. National Palace Museum, Taipei, page 215
- 262 Incense burner. Diam. 19 cm. Freer Gallery of Art, Washington, D. C., page 216
- 263 Wine vessel, *tsun*, in the form of a phoenix. Ht. 34.9 cm. National Palace Museum, Taipei, page 217
- 264 Flask. Ht. 47.6 cm. National Palace Museum, Taipei, page 218
- 265 Bowl. Diam. 15.5 cm. Percival David Foundation of Chinese Art, London, page 218
- 266 Kraak ware dish and two *kendi* (drinking flasks), export ware. Diam. of dish 36.7 cm. Formerly University of Malaya Art Museum, Singapore, page 219
- 267 "Monk's hat" jug. Ht. 20 cm. National Palace Museum, Taipei, page 219
- 268 Kuanyin, Fukien Te-hua ware. Ht. 22 cm. University of Sussex, Trustees of the Barlow Collection, page 220
- 269 Vase. Ht. 30.7 cm. British Museum, London, page 221
- 270 "Fish jar." Ht. 43.1 cm. Center of Asian Art and Culture, the Avery Brundage Collection, San Francisco, page 221
- 271 Dish, "Swatow" ware. Diam. 37.2 cm. Probably from Shih-ma, Fukien. Center of Asian Art and Culture, the Avery Brundage Collection, San Francisco, page 222
- 272 Peking, the Forbidden City, looking north from the Wu-men to the T'ai-ho-men. A corner of the T'ai-ho-tien is visible beyond. Photo by Hedda Morrison, page 225
- 273 Yüan-ming-yüan. Ruins of the Belvedere (Fang-wai-kuan), designed by Giuseppe Castiglione (Lang Shih-ning, 1688-1766). Photo by the author, 1975, page 225
- 274 The Po-hai and the Summer Palace, Peking, page 227
- 275 The Hall of Annual Prayers, Ch'i-nien-tien, in the Precinct of the Altar of Heaven, Peking. Photo by Hedda Morrison, page 227
- 276 Chiao Ping-chen (active c. 1670-1710), *Country Pursuits*. Detail of a hanging scroll. Mr. and Mrs. Allen D. Christensen Collection, Atherton, Calif., page 228
- 277 Giuseppe Castiglione, *A Hundred Horses in a Landscape*. Detail of a handscroll. Ht. 94.5 cm. National Palace Museum, Taipei, page 229
- 278 Yüan Chiang (early eighteenth century), *Gentlemen Conversing in a Landscape*. Hanging scroll. Ht. 213.5 cm. Center of Asian Art and Culture, the Avery Brundage Collection, San Francisco, page 229
- 279 Hung-jen (1610-1664), *The Coming of Autumn*. Hanging scroll. Ht. 122 cm. Honolulu Academy of Arts, page 230
- 280 Kung Hsien (1620-1689), *A Thousand Peaks and Myriad Ravines*. Hanging scroll. Ht. 62.3 cm. Charles A. Drenowatz Collection, Rietberg Museum, Zurich, page 231
- 281 Chu Ta (Pa-ta Shan-jen, 1626-c. 1705), *Landscape in the Manner of Tung Yüan*. Hanging scroll. Ht. 180 cm. Ostasiatiska Museet, Stockholm, page 232
- 282 Chu Ta, *Two Birds*. Album-leaf. Ht. 31.8 cm. Sumitomo Collection, Oiso, page 232
- 283 K'un-ts'an (Shih-ch'i, c. 1610-1693), *Autumn Landscape*. Handscroll dated equivalent to 1666. British Museum, London, page 234
- 284 Shih-t'ao (Tao-chi, 1641-c. 1710), *The Peach Blossom Spring*, illustrating a story by T'ao Yüan-ming. Detail of a handscroll. Ht. 25 cm. Freer Gallery of Art, Washington, D. C., page 234
- 285 Shih-t'ao, *A Man in a House Beneath a Cliff*. Album-leaf. Ht. 24.2 cm. C. C. Wang Collection, New York, page 235
- 286 Wang Hui (1632-1717), *Landscape in the Manner of Fan K'uan*. Hanging scroll dated equivalent of 1695. Formerly Huang Pao-hsi Collection, Hong Kong, page 236
- 287 Wang Yüan-ch'i (1642-1715), *Landscape in the Manner of Ni Tsan*. Hanging scroll. Ht. 82 cm. Dr. Franco Vannotti Collection, Lugano, Switzerland, page 236
- 288 Yün Shou-p'ing (1633-1690), *Autumn Fragrance: Chrysanthemum and Convulvulus*. Ht. 32 cm. Dr. Franco Vannotti Collection, Lugano, Switzerland, page 237
- 289 Wu Li (1632-1718), *White Clouds and Green Mountains*. Detail of a handscroll. Ht. 25.9 cm. National Palace Museum, Taipei, page 238
- 290 Chin Nung (1687-1764), *Plum Blossoms*. Hanging scroll dated equivalent to 1761. Ht. 115.9 cm. Formerly Huang Pao-hsi Collection, Hong Kong, page 238
- 291 Huang Shen (1687-1768+), *The Poet T'ao Yüan-ming Enjoys the Early Chrysanthemums*. Album-leaf. Ht. 28 cm. Stanford Museum of Art, Stanford, Calif., page 239
- 292 Hua Yen (1682-1755+), *Birds, Tree and Rock*. Hanging scroll dated equivalent to 1745. Formerly Huang Pao-hsi Collection, Hong Kong, page 239
- 293 Vase, *mei-p'ing*. Ht. 19.6 cm. Percival David Foundation of Chinese Art, London, page 242
- 294 Bottle. Ht. 43.2 cm. Victoria and Albert Museum, London, page 242

- 295 Teapot. Ht. 12.9 cm. Percival David Foundation of Chinese Art, London, *page 243*
- 296 Bottle, copy of Ju ware. National Palace Museum, Taipei, *page 243*
- 297 Double vase, *t'ao-p'ing*. Ht. 38.5 cm. National Palace Museum, Taipei, *page 244*
- 298 Vase. Ht. 19 cm. The Mount Trust, England, *page 244*
- 299 "Jesuit China" dish. Diam. 27.4 cm. British Museum, London, *page 245*
- 300 Ch'en Ming-yüan (active 1573–1620), brush-rest, I-hsing ware. L. 10.8 cm. Nelson Gallery–Atkins Museum, Kansas City, Mo., *page 245*
- 301 Carp leaping out of the water. Ht. 16.7 cm. National Palace Museum, Taipei, *page 246*
- 302 Taoist paradise. Panel of carved red lacquer inset with jade, lapis lazuli, and gilt metal. L. 110.2 cm. Victoria and Albert Museum, London, *page 247*
- 303 Snuff bottle. Ht. (without stopper) 5.8 cm. Percival David Foundation of Chinese Art, London, *page 247*
- 304 The Great Hall of the People, Peking, 1959, *page 249*
- 305 Ivory carving, *Ch'ang O Flies to the Moon*. People's Republic of China, *page 249*
- 306 Jen Po-nien (1840–1896), *Pine Tree and Mynah Birds*. Hanging scroll. Tan Tze Chor Collection, Singapore, *page 251*
- 307 Wu Ch'ang-shih (1842–1927), *Lychee Nuts*. Hanging scroll. Ht. 91.4 cm. Mr. and Mrs. Allen D. Christensen Collection, Atherton, Calif., *page 251*
- 308 Chang Dai Chien (1899–1983), *Ten Thousand Miles of the Yangtse*. Detail of a handscroll, showing the Min River at Kuan-hsien, Szechwan. Chang Ch'ün Collection, Taipei, *page 251*
- 309 Ch'i Pai-shih (1863–1957), *The Thing for Prolonging Life Is Wine!* Hanging scroll. Ht. 62.2 cm. Private collection, *page 252*
- 310 Hsü Pei-hung (Ju Péon, 1895–1953), *Magpies on an Old Tree*. Location unknown, *page 253*
- 311 Li Hua (born 1907), *Refugees: A Contrast*. Woodcut, *page 254*
- 312 Huang Yung-yü (contemporary), *Mountain Tribes-people*. Woodcut. Private collection, *page 255*
- 313 Chao Wu-chi (Zao Wou-ki, born 1921), untitled. Ht. 152.4 cm. H. Harvard Arnason Collection, New York, *page 256*
- 314 Lin Feng-mien (contemporary), *The Yangtse Gorges*. Ht. 51 cm. Private collection, *page 256*
- 315 Tseng Yu-ho (born 1923), *Hawaiian Village*. Honolulu Academy of Arts, Honolulu, *page 257*
- 316 Lü Shou-k'un (1919–1976), *Mountain*. Hanging scroll. Ht. 45.7 cm., *page 257*
- 317 Li K'o-jan (born 1907), *Village in the Mountains*. Hanging scroll. Ht. 69.6 cm. Private collection, *page 259*
- 318 Anonymous team of sculptors, *The Rent Collection Courtyard*. Detail of a life-size tableau in clay-plaster, in a former landlord's mansion at Ta-yi, Szechwan, *page 260*
- 319 Wu Kuan-chung (born 1919), *Reflections in the Rice Fields*. Chinese ink, *page 261*

Preface to the Third Edition

Second Impression

In reprinting the third edition the publishers have very kindly allowed me to make a small number of essential changes and corrections to the text. My warmest thanks are due to them and to my scholar friends, students, and former students who over the years have helped me to improve successive editions of the book. Without their help and that of all the collectors and museums that have supplied me with information and illustrations, it would have gone out of print years ago.

I should particularly like to express my thanks once again to Allen and Carmen Christensen for their generous and continuous support for our work.

M. S.

St. Catherine's College
Oxford
February 1986

A Note on Romanisation

The system used in this book is the familiar Wade-Giles. The most important thing to remember about it is the use of the aspirate to distinguish aspirated from unaspirated initial consonants. Here are a few examples, with the official Chinese *Pinyin* equivalents in parentheses:

cheng (zheng)	pan (ban)	<i>also</i> hsi (xi)
ch'eng (cheng)	p'an (pan)	hsüan (xuan)
chi (ji)	tao (dao)	lien (lian)
ch'i (qi)	t'ao (tao)	lo (le, luo)
ching (jing)	tsao (zao)	yu (you)
ch'ing (qing)	ts'ao (cao)	yü (yu)
kuei (gui)	tsung (zong)	
k'uei (kui)	ts'ung (cong)	

The most familiar place names follow the standard practice of using the anglicised version (as in Munich, Florence, Rome); thus: Peking, Nanking, Canton, Sian.

Names of provinces follow the well-known Chinese Post Office spelling: Chekiang, Szechwan, Fukien. Less well-known names are in Wade-Giles: Manch'eng, Lung-ch'uan. The Pinyin form of all names and terms will be found in the Index.



MAP I Modern China.

Chronological Table of Dynasties

HSIA		??
SHANG		c. 1750-1045 B.C.
CHOU	{ Western Chou 1045-711 Eastern Chou 770-256 'Spring and Autumn' period 722-481 Warring States period 480-222 }	1045-256
CH'IN		221-207
HAN	{ Former (Western) Han 202 B.C.-A.D. 9 Hsin 9-23 Later (Eastern) Han 25-220 }	202 B.C.-A.D. 220
THREE KINGDOMS	{ Shu (Han) 221-263 Wei 220-265 Wu 222-280 }	221-265
SOUTHERN (Six Dynasties)	{ Chin 265-316 Eastern Chin 317-420 Liu Sung 420-479 Southern Ch'i 479-502 Liang 502-557 Ch'en 557-587 }	265-581
and		
NORTHERN DYNASTIES	{ Northern Wei (T'o-pa) 386-535 Eastern Wei (T'o-pa) 534-543 Western Wei (T'o-pa) 535-554 Northern Ch'i 550-577 Northern Chou (Hsien-pi) 557-581 }	
SUI		581-618
T'ANG		618-906
FIVE DYNASTIES	{ Later Liang 907-922 Later T'ang (Turkic) 923-936 Later Chin (Turkic) 936-948 Later Han (Turkic) 946-950 Later Chou 951-960 }	907-960
	Liao (Khitan Tartars) 907-1125	
	Hsi-hsia (Tangut Tibetan) 990-1227	
SUNG	{ Northern Sung 960-1126 Southern Sung 1127-1279 }	960-1279
	Chin (Jurchen Tartars) 1115-1234	
YÜAN (Mongols)		1260-1368
MING		1368-1644
CH'ING (Manchus)		1644-1912
REPUBLIC		1912-1949
PEOPLE'S REPUBLIC		1949-

Reign Periods of the Ming and Ch'ing Dynasties

MING 1368-1644

Hung-wu	1368-1398
Chien-wen	1399-1402
Yung-lo	1403-1424
Hung-hsi	1425
Hsüan-te	1426-1435
Cheng-t'ung	1436-1449
Ching-t'ai	1450-1457
T'ien-shun	1457-1464
Ch'eng-hua	1465-1487
Hung-chih	1488-1505
Cheng-te	1506-1521
Chia-ching	1522-1566
Lung-ch'ing	1567-1572
Wan-li	1573-1620
T'ai-ch'ang	1620
T'ien-ch'i	1621-1627
Ch'ung-chen	1628-1644

CH'ING 1644-1912

Shun-chih	1644-1661
K'ang-hsi	1662-1722
Yung-cheng	1723-1735
Ch'ien-lung	1736-1796
Chia-ch'ing	1796-1821
Tao-kuang	1821-1850
Hsien-feng	1851-1861
T'ung-chih	1862-1873
Kuang-hsü	1874-1908
Hsüan-t'ung	1909-1912