

INTERIOR

OF
EUROPE

SPACES

VOLUME

A PICTORIAL REVIEW OF SIGNIFICANT INTERIORS

70 295-

22/118-

INTERIOR

OF
EUROPE

SPACES

江苏工业学院图书馆
藏书章

VOLUME 1

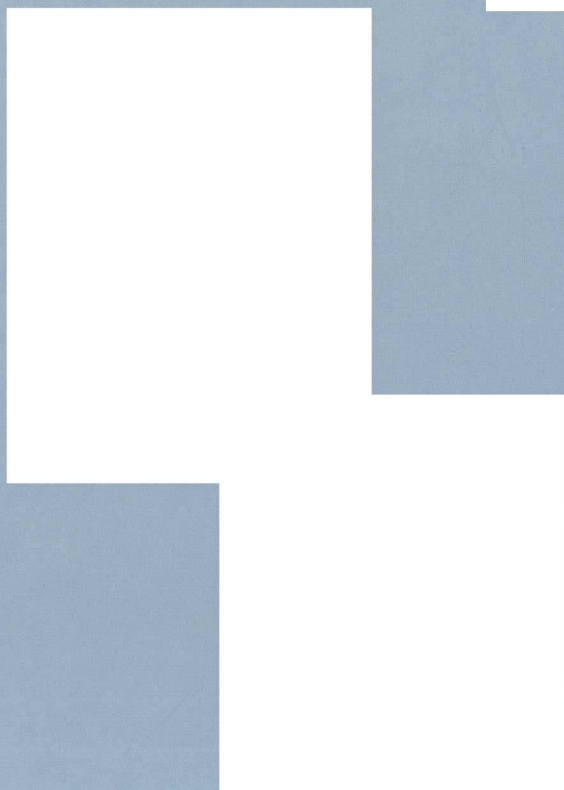
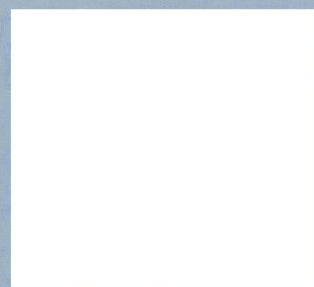
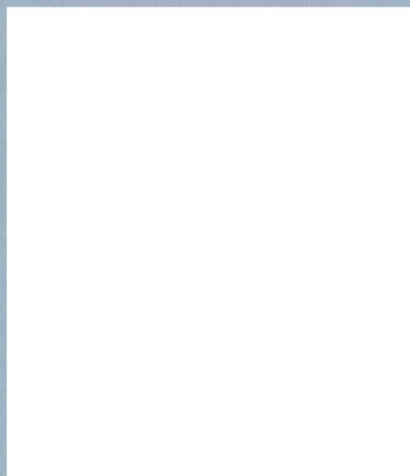
A PICTORIAL REVIEW OF EUROPEAN INTERIORS

INTERIOR



OF
EUROPE

SPACES



VOLUME 1

A PICTORIAL REVIEW OF EUROPEAN INTERIORS

ISBN 1 875498 33 8

© 1997

The Images Publishing Group Pty Ltd

Melbourne, Australia 1997

Printed in Hong Kong

此为试读, 需要完整PDF请访问: www.ertongbook.com



Contents

Commercial Space and Atria 7

Hospitality Space and Restaurants 81

Leisure and Art Centres 99

Public and Special Purpose Spaces 129

Retail Space and Showrooms 183

Designers' Biographies 209

Index 220

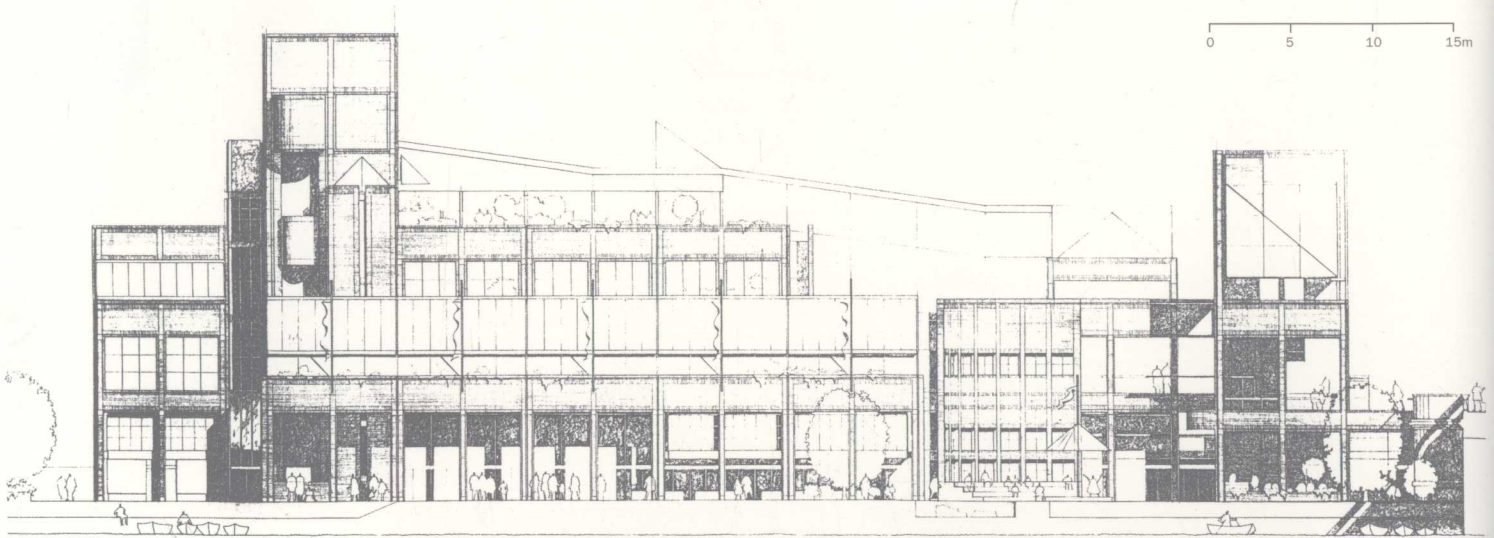
Acknowledgments 223

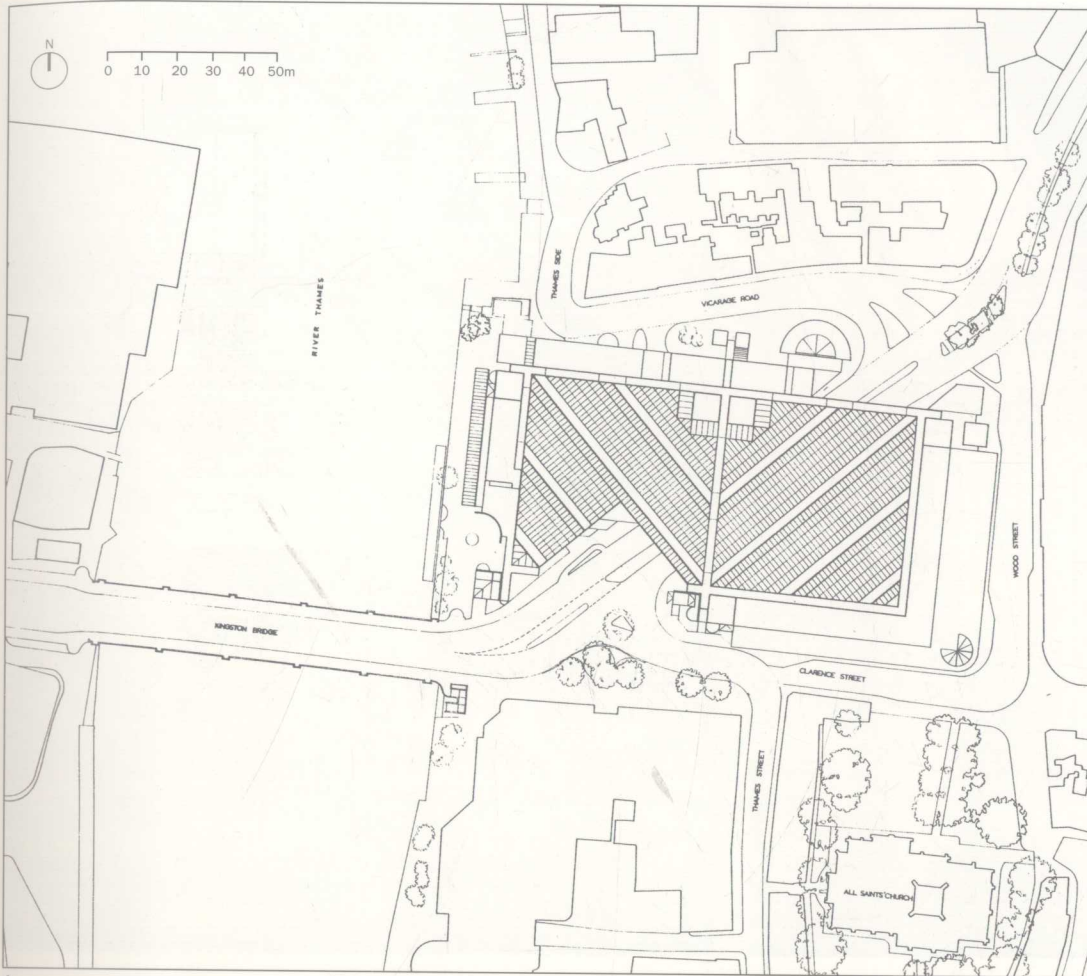




Commercial Space and Atria

0 5 10 15m

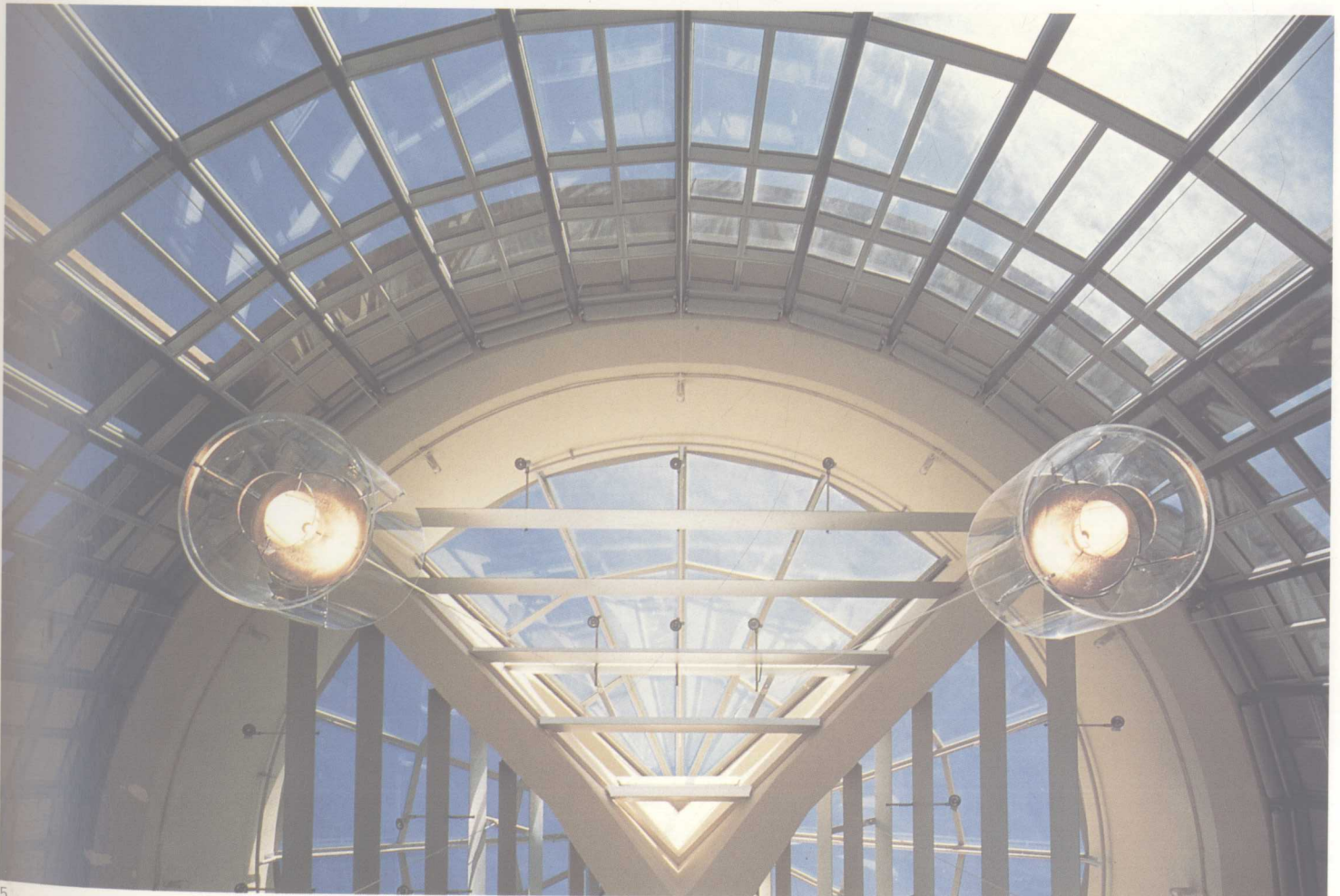




**John Lewis Partnership, Kingston
Kingston Upon Thames, UK**
Ahrends, Burton and Koralek

- 1 West elevation, River Thames
- 2 Coffee shop corner, entrance
- 3 West elevation from across the Thames
- 4 Site plan
- 5 Coffee shop roof

Photo credit: Chris Gascoigne (3,5)
Martin Charles (2)





6



7





9



10

**John Lewis Partnership, Kingston
Kingston Upon Thames, UK**
Ahrends, Burton and Koralek

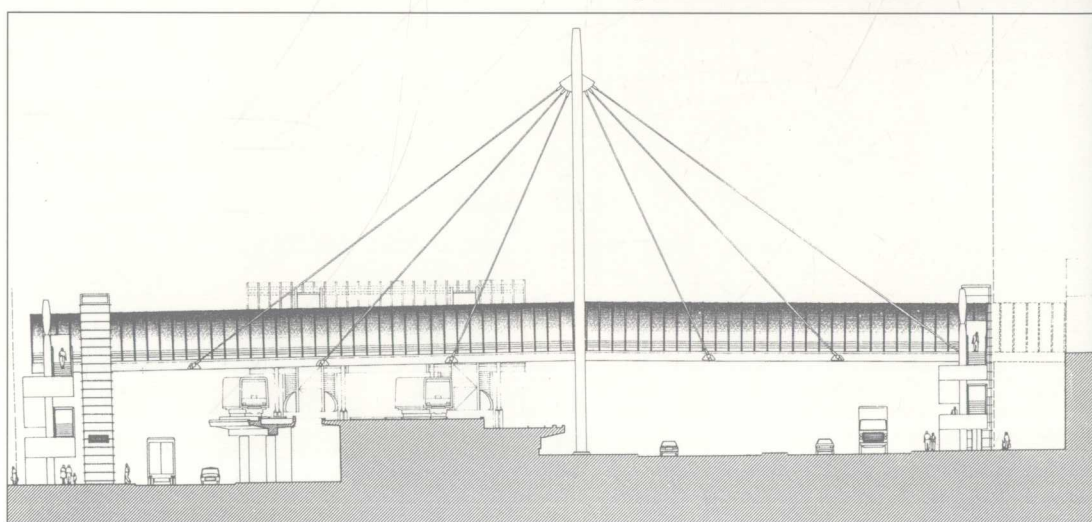
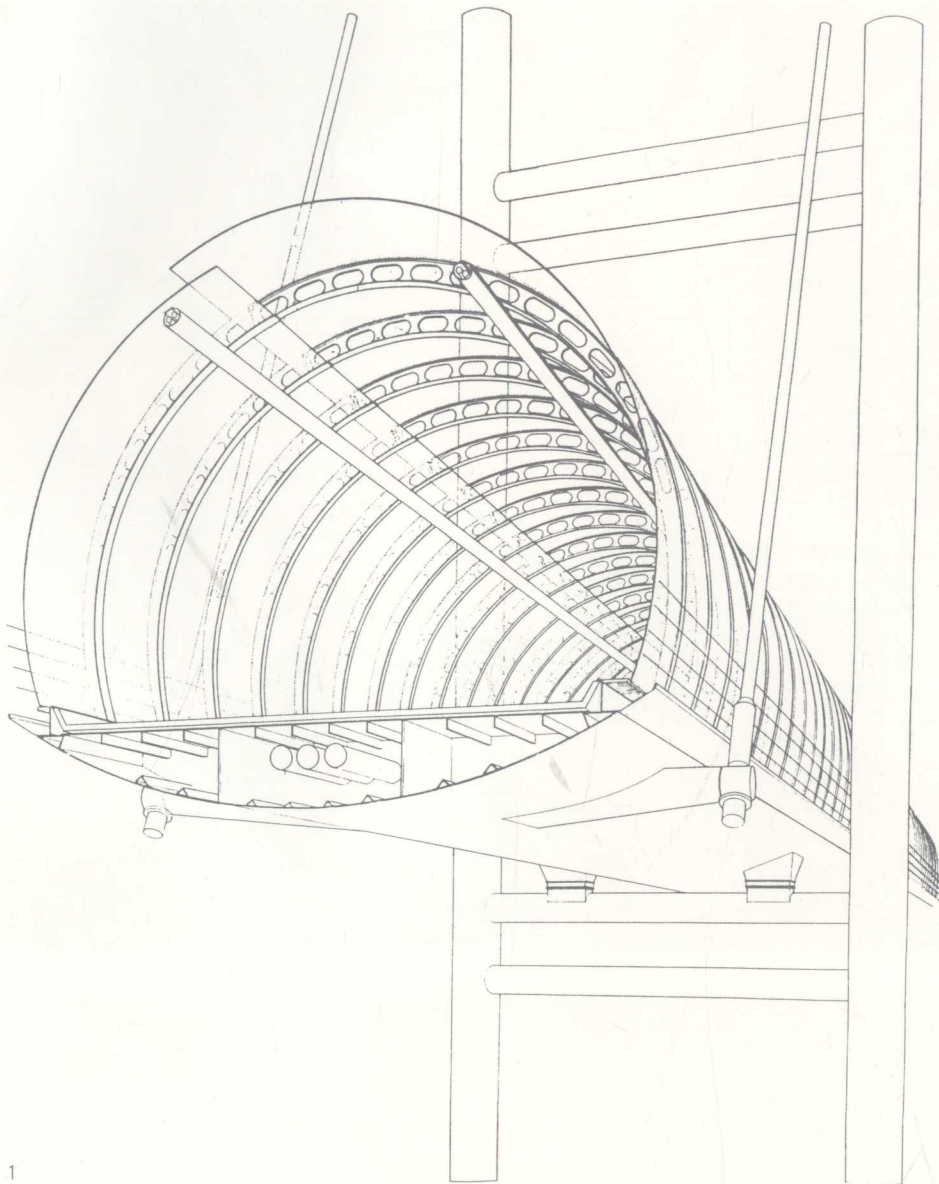
6 Coffee shop above entrance

7&8 Restaurant

9&10 Main interior

Photo credit: Martin Charles (6-8)

Chris Gascoigne (9&10)





5

**Docklands Light Railway, Poplar High Level Walkway
London, UK**

Ahrends, Burton and Koralek

- 1 Cable stays and perspective
- 2 Poplar bridge looking toward Canary Wharf (Docklands)
- 3 Bridge interior
- 4 West elevation

Photo credit: Peter Cook (2); James Morris (3)

**PowerGen Operational Headquarters
Coventry, UK**

'Office of the Year' 1996 British Council for Offices

Fletcher Priest Architects

- 5 Naturally ventilated atrium

Photo credit: Peter Cook

**Leo Burnett Building
London, UK**

Fletcher Priest Architects

- 6 Atrium cafe

Photo credit: Peter Cook

**W.H. Smith, Greenbridge
Swindon, UK**

Ahrends, Burton and Koralek

- 7 Interior access route to offices
- 8 View of reception drum

Photo credit: Peter Cook



6



7



8



1



2



3



4



5

**Bank Offices, Cassa di Risparmio di
Parma & Piacenza
Collecchio (Parma), Italy**

Franco Carpanelli • Architect

1 Entrance hall

2-5 Interior space

Photo credit: Amoretti - Parma

Fift Snam Office

S. Donato Milanese (Milan)

Gabetti & Isola with Guido Drocco

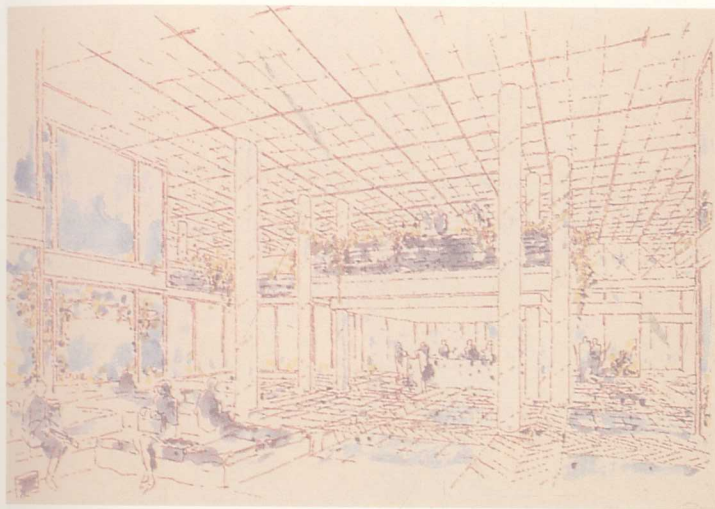
6 Entrance hall

7 Perspective of entrance hall

8 Staff dining room

9 Office interior

Photo credit: Daniele Regis



7



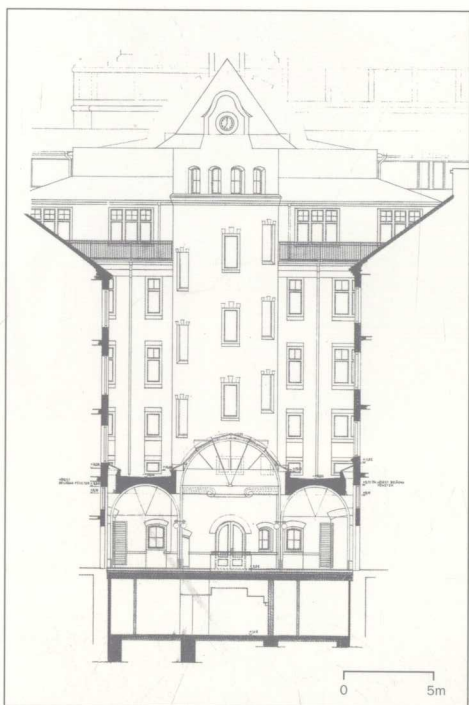
6



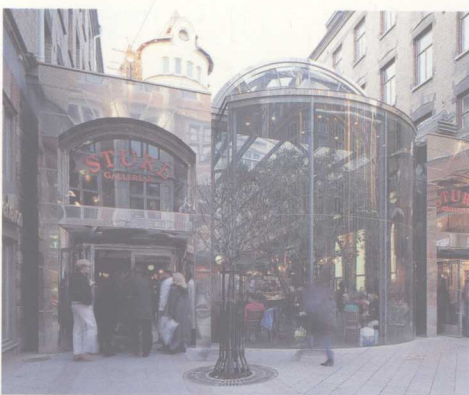
8



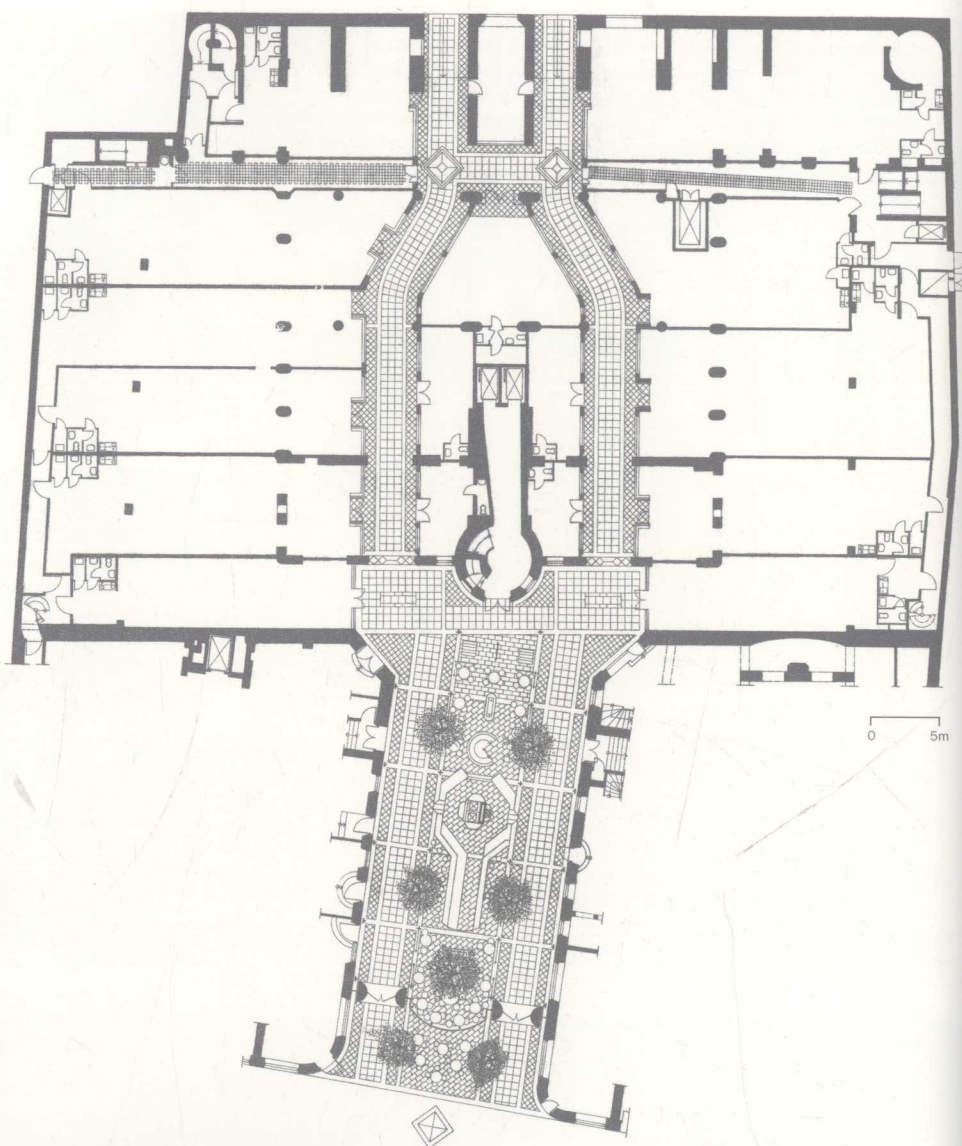
9



1



2



3



4

Sturegallerian
Stockholm, Sweden
 Hans Murman Arkitektkontor AB
 1 Elevation
 2 Entrance from Grev Turegatan, facade
 of glass and stainless steel
 3 Site plan
 4 Restaurant Tures just inside glass facade
 5 Arcade space, restaurant has
 a passage on each side
 Photo credit: Hans Murman