

Adrian Paschke
Yevgen Biletskiy (Eds.)

LNCs 4824

Advances in Rule Interchange and Applications

International Symposium, RuleML 2007
Orlando, Florida, October 2007
Proceedings



Springer

Adrian Paschke Yevgen Biletskiy (Eds.)

Advances in Rule Interchange and Applications

International Symposium, RuleML 2007
Orlando, Florida, October 25-26, 2007
Proceedings

 Springer

Volume Editors

Adrian Paschke
Technical University Dresden
Biotech/Dept. of Computing
Tatzberg 47-51, 01307 Dresden, Germany
E-mail: adrian.paschke@biotec.tu-dresden.de

Yevgen Biletskiy
University of New Brunswick
15 Dineen Drive, Fredericton, New Brunswick, E3B 5A3, Canada
E-mail: biletski@unb.ca

Library of Congress Control Number: 2007937616

CR Subject Classification (1998): D.3.1, F.3.2, H.5.3

LNCS Sublibrary: SL 2 – Programming and Software Engineering

ISSN 0302-9743
ISBN-10 3-540-75974-3 Springer Berlin Heidelberg New York
ISBN-13 978-3-540-75974-4 Springer Berlin Heidelberg New York

This work is subject to copyright. All rights are reserved, whether the whole or part of the material is concerned, specifically the rights of translation, reprinting, re-use of illustrations, recitation, broadcasting, reproduction on microfilms or in any other way, and storage in data banks. Duplication of this publication or parts thereof is permitted only under the provisions of the German Copyright Law of September 9, 1965, in its current version, and permission for use must always be obtained from Springer. Violations are liable to prosecution under the German Copyright Law.

Springer is a part of Springer Science+Business Media
springer.com

© Springer-Verlag Berlin Heidelberg 2007
Printed in Germany

Typesetting: Camera-ready by author, data conversion by Scientific Publishing Services, Chennai, India
Printed on acid-free paper SPIN: 12180622 06/3180 5 4 3 2 1 0

Commenced Publication in 1973

Founding and Former Series Editors:

Gerhard Goos, Juris Hartmanis, and Jan van Leeuwen

Editorial Board

David Hutchison

Lancaster University, UK

Takeo Kanade

Carnegie Mellon University, Pittsburgh, PA, USA

Josef Kittler

University of Surrey, Guildford, UK

Jon M. Kleinberg

Cornell University, Ithaca, NY, USA

Friedemann Mattern

ETH Zurich, Switzerland

John C. Mitchell

Stanford University, CA, USA

Moni Naor

Weizmann Institute of Science, Rehovot, Israel

Oscar Nierstrasz

University of Bern, Switzerland

C. Pandu Rangan

Indian Institute of Technology, Madras, India

Bernhard Steffen

University of Dortmund, Germany

Madhu Sudan

Massachusetts Institute of Technology, MA, USA

Demetri Terzopoulos

University of California, Los Angeles, CA, USA

Doug Tygar

University of California, Berkeley, CA, USA

Moshe Y. Vardi

Rice University, Houston, TX, USA

Gerhard Weikum

Max-Planck Institute of Computer Science, Saarbruecken, Germany

Preface

The International Symposium on Rule Interchange and Applications (RuleML-2007), collocated in Orlando, Florida, with the Tenth International Business Rules Forum, was the first symposium devoted to work on practical distributed rule technologies and rule-based applications which need language standards for rules operating in the context of modern infrastructures, including the Semantic Web, intelligent multi-agent systems, event-driven architectures, and service-oriented computing applications. The symposium was organized by the RuleML Initiative, financially and technically supported by industrial companies (Top Logic, VISTology, and Inferware) and in cooperation with professional societies (ECCAI, AAIL, ACM, ACM SIGAPP, ACM SIGMIS, ACM SIGART, ACM SIGMOD, IEEE, IEEE Computer TCAAS, IEEE SMCS, BPM-Forum, W3C, OMG, and OASIS).

The RuleML Initiative is organized by representatives from academia, industry and government for the advancement of rule technology, providing enhanced usability, scalability and performance. The goal of RuleML (www.ruleml.org) is to develop an open, general, XML-based family of rule languages as intermediaries between various 'specialized' rule vendors, applications, industrial and academic research groups, as well as standardization efforts such as OMG's PRR or W3C's RIF. A general advantage of using declarative rules is that they can be easily represented in a machine-readable and platform-independent manner, often governed by an XML schema. This fits well into today's distributed, heterogeneous Web-based system environments. Rules represented in standardized Web formats can be discovered, interchanged and invoked at runtime within and across Web systems, and can be interpreted and executed on any platform.

After a series of successful RuleML workshops and then conferences (e.g., <http://2006.ruleml.org>), the RuleML 2007 Symposium was a new kind of event where the Web Logic community joined the established, practically oriented Forum of the Business Rules community (www.businessrulesforum.com) to help the cross-fertilization between Web and business logic technology. The goal of RuleML 2007 was to bring together rule system providers, representatives of, and participants in, rule standardization efforts (e.g., RuleML, RIF, SBVR, etc.) and open source rule communities (e.g., jBoss Rules, Jess, Prova, OO jDREW, etc.), practitioners and technical experts, developers, users, and researchers, to attend an exciting venue and exchange new ideas, practical developments and experiences on issues related to the engineering, management, integration, interoperation, and interchange of rules in open distributed environments such as the Web.

In spite of this year's late announcement, RuleML 2007 received 41 original submissions from contributors around the world. The organizers of this event could take advantage of the very strong International Program Committee, who rigorously reviewed the submissions. Each submission was reviewed at least by three Program Committee members. Finally, the symposium program included: nine full papers, which presented solid work in advancing and assessing the state of the art in rule-based systems, including event processing systems; two invited papers accompanying

keynotes; nine short papers, which presented innovative ideas, approaches, and implementations; and three demo papers accompanying presentations of practical applications at the RuleML 2007 Challenge session. Full papers represented two main streams: (1) Rule languages, rule engines, and rule interchange. (2) Business process and service modeling and management. Short papers covered several aspects including advances in rule languages, rule engines, integration of rules and ontologies, as well as rule applications.

To place emphasis on the practical use of rule technologies in distributed Web-based environments, there was a RuleML 2007 Challenge with a focus on rule engines and rule technologies, interoperation, and interchange. The challenge offered participants the opportunity to demonstrate their commercial and open source tools, use cases, and applications.

Further highlights of RuleML 2007 included:

- Plenary keynotes given by world-class practitioners and researchers, featuring foundational topics of rule-based computing and industrial success stories:
- 1. Ron Ross (BRCommunity):
"Business Requirements for Rule Modeling"
- 2. Jürgen Angele (Ontoprise):
"How Ontologies and Rules Help to Advance Automobile Development"
- 3. Adrian Bowles (OMG):
"Sharing Policy Rules for IT Governance"
- 4. Harold Boley (NRC IIT):
"Are Your Rules Online? Four Web Rule Essentials"
- A panel discussion on Web business rules, featuring prominent and visionary panelists.
- Social events to promote networking among the symposium delegates.

The RuleML 2007 organizers wish to thank the excellent Program Committee for their hard work in reviewing the submitted papers. Their criticism and very useful comments and suggestions were instrumental in achieving a high-quality publication. We also thank the symposium authors for submitting good papers, responding to the reviewers' comments, and abiding by our production schedule. We further wish to thank the keynote speakers for contributing their interesting talks. We are very grateful to the Business Rules Forum organizers for enabling this fruitful collocation of the Tenth Business Rules Forum and RuleML 2007. In particular, we thank Gladys Lam and Valentina Tang for their support. Finally, we thank our sponsors, whose financial support helped us to offer this event, and whose technical support allowed us to attract many high-quality submissions.

August 2007

Adrian Paschke
Yevgen Biletskiy

Organization

Program Committee

Asaf Adi, IBM Research Laboratory Haifa, Israel
Bill Andersen, Ontology Works, USA
Grigoris Antoniou, University of Crete, Greece
Arun Ayachitula, IBM T.J. Watson Research Center, USA
Youcef Baghdadi, Sultan Qaboos University, Oman
Sidney Bailin, Knowledge Evolution, USA
Claudio Bartolini, HP Labs Palo Alto, USA
Tim Bass, SilkRoad Inc., USA
Nick Bassiliades, Aristotle University of Thessaloniki, Greece
Bernhard Bauer, University of Augsburg, Germany
Lepoldo Bertossi, Carleton University, Canada
Anthony Brown, University of New Brunswick, Canada
Loreto Bravo, University of Edinburgh, UK
Diego Calvanese, Free University of Bozen-Bolzano, Italy
Donald Chapin, Business Semantics Ltd., UK
Keith Clark, Imperial College, UK
Jorge Cuellar, Siemens AG, Germany
Mike Dean, BBN Technologies, USA
Stan Devitt, Agfa Healthcare, Canada
Jens Dietrich, Massey University, New Zealand
Jürgen Dix, Technische Universität Clausthal, Germany
Scharam Dustdar, Vienna University of Technology, Austria
Andreas Eberhart, HP, Germany
Maarten van Emden, University of Victoria, Canada
Opher Etzion, IBM Research Laboratory Haifa, Israel
Dieter Fensel, DERI Innsbruck, Austria
Tim Finin, University of Maryland Baltimore County, USA
Dragan Gasevic, Athabasca University, Canada
Allen Ginsberg, MITRE, USA
Robert Golan, DBmind Technologies, USA
Guido Governatori, University of Queensland, Australia
Sung Ho Ha, Kyungpook National University, South Korea
Gary Hallmark, Oracle, USA
Marek Hatala, Simon Fraser University, Canada
Ivan Herman, W3C Semantic Web Activity, Netherlands
David Hirtle, University of Waterloo, Canada
Jochen Hiller, Top Logic, Germany
Christian Huemer, Vienna University of Technology, Austria
Jane Hunter, University of Queensland, Australia

Elisa Kendall, Sandpiper Software, USA
Matthias Klusch, DFKI GmbH, Saarbrücken, Germany
Holger Lausen, DERI Innsbruck, Austria
John Lee, Hong Kong Polytechnic University, Hong Kong
Heiko Ludwig, IBM T.J. Watson Research Center, USA
Thomas Lukasiewicz, University of Rome 'La Sapienza,' Italy
Christopher Matheus, Vistology, Inc., USA
Mala Mehrota, Pragati Research, USA
Jing Mei, Peking University, China
Zoran Milosevic, Deontik, Australia
Jang Minsu, E&T Research Institute, Korea
Leora Morgenstern, Stanford University, USA
Joerg Mueller, TU Clausthal, Germany
Chieko Nakabasami, Toyo University, Japan
Matthias Nickles, Technical University of Munich, Germany
Ilkka Niemelae, Helsinki University of Technology, Finland
Bart Orriens, Tilburg University, Netherlands
Paula-Lavinia Patranjan, Rewerse, Germany
Cheyne Patterson, USAchurch, USA
Axel Polleres, DERI Galway, Ireland
Jeff Pollock, Oracle, USA
Alun Preece, University of Aberdeen, UK
Maher Rahmouni, HP Labs, UK
Girish R. Ranganathan, University of New Brunswick, Canada
Dave Reynolds, HP, England
Norman Sadeh, Carnegie Mellon University, USA
Marco Seirioe, RuleCore, Sweden
Kai Simon, Albert Ludwigs University Freiburg, Germany
Michael Sintek, DFKI, Germany
Silvie Spreeuwenberg, LibRT, Netherlands
Giorgos Stoilos, NTU Athens, Greece
Terrance Swift, XSB, Inc., USA
Kuldar Taveter, University of Melbourne, Australia
Vagan Terziyan, University of Jyvaskyla, Finland
Paul Vincent, TIBCO Software, Inc., USA
Kewen Wang, Griffith University, Australia
Guizhen Yang, SRI, USA

Table of Contents

Invited Papers

How Ontologies and Rules Help to Advance Automobile Development	1
<i>Thomas Syldatke, Willy Chen, Jürgen Angele, Andreas Nierlich, and Mike Ullrich</i>	
Are Your Rules Online? Four Web Rule Essentials	7
<i>Harold Boley</i>	

Session: Business Process, Policy and IT Service Management and Modeling

KISS – Knowledge-Intensive Service Support: An Approach for Agile Process Management	25
<i>Daniela Feldkamp, Knut Hinkelmann, and Barbara Thönssen</i>	
Specifying Process-Aware Access Control Rules in SBVR	39
<i>Stijn Goedertier, Christophe Mues, and Jan Vanthienen</i>	
A Rule-Based Approach to Prioritization of IT Work Requests Maximizing Net Benefit to the Business	53
<i>Maher Rahmouni, Claudio Bartolini, and Abdel Boulmakoul</i>	

Session: Rule Languages and Interchange Standards

A Generic Module System for Web Rule Languages: Divide and Rule ...	63
<i>Uwe Aßmann, Sacha Berger, François Bry, Tim Furche, Jakob Henriksson, and Paula-Lavinia Pătrânjan</i>	
Towards Semantically Grounded Decision Rules Using ORM ⁺	78
<i>Yan Tang, Peter Spyns, and Robert Meersman</i>	
Towards Ontological Commitments with Ω -RIDL Markup Language....	92
<i>Damien Trog, Yan Tang, and Robert Meersman</i>	

Session: Business Rules, Rule Engines and Applications

Recovering Business Rules from Legacy Source Code for System Modernization	107
<i>Erik Putrycz and Anatol W. Kark</i>	

An Approach for Bridging the Gap Between Business Rules and the Semantic Web 119
Birgit Demuth and Hans-Bernhard Liebau

Take - A Rule Compiler for Derivation Rules 134
Jens Dietrich, Jochen Hiller, and Bastian Schenke

Session: RuleML-2007 Challenge

The OO jDREW Engine of Rule Responder: Naf Hornlog RuleML Query Answering 149
Benjamin Larry Craig

Querying the Semantic Web with SWRL 155
Martin O'Connor, Samson Tu, Csongor Nyulas, Amar Das, and Mark Musen

Implementation of Production Rules for a RIF Dialect: A MISMO Proof-of-Concept for Loan Rates 160
Tracy Bost, Phillippe Bonnard, and Mark Proctor

Session: Rules, Reasoning, and Ontologies

Adapting the Rete-Algorithm to Evaluate F-Logic Rules 166
Florian Schmedding, Nour Sawas, and Georg Lausen

Rule Definition for Managing Ontology Development 174
David A. Ostrowski

Integrating Rules and Description Logics with Circumscription for the Semantic Web 182
Fangkai Yang and Xiaoping Chen

XML Data Compatibility from the Ground Up 190
Karthick Sankarachary

Session: Reaction Rules and Rule Applications

Exploiting E-C-A Rules for Defining and Processing Context-Aware Push Messages 199
Thomas Beer, Jörg Rasinger, Wolfram Höpken, Matthias Fuchs, and Hannes Werthner

The Use of Ontologies and Rules to Assist in Academic Advising..... 207
Girish R. Ranganathan and J. Anthony Brown

Towards Knowledge Extraction from Weblogs and Rule-Based Semantic Querying	215
<i>Xi Bai, Jigui Sun, Haiyan Che, and Jin Wang</i>	
Complex Information Management Using a Framework Supported by ECA Rules in XML	224
<i>Bing Wu, Essam Mansour, and Kudakwashe Dube</i>	
AIM: An XML-Based ECA Rule Language for Supporting a Framework for Managing Complex Information	232
<i>Essam Mansour, Kudakwashe Dube, and Bing Wu</i>	
Author Index	243

How Ontologies and Rules Help to Advance Automobile Development

Thomas Syldatke¹, Willy Chen², Jürgen Angele³, Andreas Nierlich³,
and Mike Ullrich³

¹ Audi AG, Ingolstadt

Thomas.syldatke@audi.de

² Achievo Inproware GmbH, Ingolstadt

willy.chen@achievo.com

³ ontoprise GmbH, Karlsruhe

{angele,nierlich,mike.ullrich}@ontoprise.de

Abstract. Nowadays the increasing complexity of cars has become a major challenge due to the growing rate of electronic components and software. This trend has an impact on all phases of the life cycle of the car. Especially during the process of testing cars and components semantic based approaches can help to increase the automation ratio of testing components and to find the needle in the haystack. Ontologies in combination with rules have proven to check specifications against test results and therefore deliver new insights.

Keywords: ontology, rule, automotive engineering.

1 Introduction

A multiplicity of today's innovations in the automotive industry is reached by new and more efficient electronic systems (e.g. Multimedia, drivers' assistance systems, safety systems, etc.). Especially for premium class cars the number of integrated controllers increases constantly. Therefore not only the development of such systems but also their integration into the car is accordingly complex. The essential reduction of time-to-market and thus shortened development cycles is even enhancing the complexity and intensifying the problem.

To be able to cope with these requirements car manufacturers as well as their suppliers have to implement highly efficient test methods for the electronic systems.

Testing is an essential part in the development of a new car to ensure an outstanding quality of the final product. This is also true for embedded software and electronic components. While such systems have been quite simple in the past, they are nowadays getting more and more complex. The complexity is thereby not only driven by the actual functionality but also by the application in different car configurations and environments. Furthermore, their number has grown up to 60 electronic control units (ECU) in a single premium class car.

An important task in the overall testing process is the simulation of a physical ECU in a virtual car environment, which is also known as Hardware-in-the-Loop (HiL) test. Unlike tests in real prototypes, critical situations and system states can be covered without any risk. Targets during HiL tests are the validation of the ECU

against its specification and other given requirements. The main problem thereby is the huge amount of data, which is being generated and recorded during such a test run. Therefore, the analysis of that data is not only very time-consuming, but one could easily overlook a fault.

Existing software solutions do assist the engineers in performing the analysis by providing different visualizations of the recorded data. However, they lack a standardized way to define the desired system behaviour on the one hand and known error cases on the other. The application of ontologies to provide a uniform vocabulary for that domain and rules to specify the system behaviour as well as error cases have shown promising results to face these issues and automate this part of the testing process.

This paper will give a brief survey over a prototype realized for Audi. Section 2 summarizes the concrete business use case. The prototype itself is presented in section 3 and discussed in section 4. Finally, section 5 concludes the paper and gives some plans and ideas for the future work on this topic.

2 Use Case

In 2006 Audi has announced the first engines including the Audi valvelift system. “This innovation varies the valve lift between two levels. To achieve this, sets of sliding cams are mounted directly on the intake camshafts. These feature two sets of adjacent cam contours for small and large valve lift. Which cam is used to open the intake valves depends on the power demand at any one time. The effect is an appreciable increase in engine efficiency. The driver benefits from greater power and improved driveability, while enjoying a marked reduction in fuel consumption“[1].

The valve lifts are controlled by the engine management system. A deterministic finite automaton internally represents the possible states of the valvelift system and specifies the conditions for switching the valve lifts. This automaton has 6 different states S_1, \dots, S_6 whereas S_1 is the start state. S_1 and S_4 represent the states in which the small respectively the large valve lift is being used. The other ones are transition states that have to be passed in a given order. The state transition functions δ finally define when to switch between the valve lifts. An example for such a transition function is: “If the engine speed is greater than 4000 the valvelift system must switch to S_4 if it is in S_1 ”. These details are defined in the specification of the engine management system.

Without knowing any internal details about the engine management system an engineer could also specify the expected behaviour of the valvelift system from another point of view - e.g.: “at idle speed the small valve lift must be used”. During expert interviews we have been able to elicit 18 of these kind of rules that need to be kept in mind when testing the engine management system.

3 The Prototype

The main challenge for a first prototype is to merge both sources of knowledge about the valvelift system and provide a way to automatically validate and analyze the data

recorded during the HiL tests. Therefore, a flexible way of formalizing the given rules for the transition functions as well as the system constraints is required.

Adopting ontologies for defining a uniform domain vocabulary and rules is a promising way to meet these demands. Both have recently gained increasing attention from researchers as well as the industry, because they are considered key technologies for enabling the vision of a Semantic Web. First companies are also starting to provide professional support in that technology niche.

Since researchers still disagree about the best way of combining (OWL) ontologies and rules, we have selected the representation language that comes with the best professional support. F-Logic [2] together with the inference machine OntoBroker [3] from Ontoprise turned out to be most suitable for our demands.

3.1 Domain Ontology

The first task in the prototype development is the modelling of a domain ontology that provides a common vocabulary for the definition of rules. We thereby need to take the format of the recorded data from HiL tests into account, since they will in the end be the facts of our domain ontology.

Using the tool INCA it is possible to take snapshots of internal variables of an ECU (e.g., current state of the finite automaton, engine speed, oil temperature) during the HiL tests with a minimum time interval of approx. 10ms. Table 1 gives an example of such a recorded data set.

Table 1. Example data set from INCA

time(ms)	var1	var2	var3	var4	..	var24
0.003264454	2519	1	2 90	..	15005	
0.013361665	2519	1	2 90	..	15006	
..

To keep the first prototype quite simple, we define two concepts:

- *Situation*: represents a single snapshot of the ECU at a given time including the recorded variables and a relation to the successor snapshot if present.
- *State*: the facts of this class represent the possible states of the finite automaton.

3.2 System and Expert Rules

The basic idea for defining rules on top of the domain ontology is on the one hand to simulate the expected state that should be present at a given snapshot. Therefore we add a relation *nextState* to the concept *Situation* and can derive its value based on the given transition functions. The above mentioned rule (“If the engine speed is greater than 4000 the valvelift system must switch to S4 if it is in S1”) is for example represented in F-Logic as follows:

```
?S[nextState->S4] <-
?S:Situation[state->S1,engineSpeed->?V] and ?V > 4000.
```

On the other hand we can use this derivation results to check, whether it is equal to the measured state. In F-Logic this is represented as a constraint:

```
! ?S:Situation[nextState->?X, successor->?SS] and not
?SS[state->?X].
```

Based on this approach we can seamlessly integrated the expert rules by formulating them as error statements:

```
! ?S:Situation[state->S4, IDLE->>1].
```

The OntoBroker offers the possibility to retrieve the proof tree for a specific query result – i.e. which variables and values have been used in which rule. This feature can be utilized to define explanations for rule. A detailed description can be found in [3].

3.3 The Prototype System

Figure 1 shows the prototype system, which is embedded as a plugin in an Eclipse RCP-based applications, which also includes a module to manage ontologies and rules. The main features are:

- Import HiL test data: The data recorded with INCA can be transformed into instances of the domain ontology.
- Simulation Run: By applying the defined rules, the test data instances are checked for possible errors, which are then highlighted.
- Explanation of results: If available, an explanation for a detected error is presented. Tests with real data from HiL tests have shown reasonable results. Furthermore, some minor errors could be detected as well as explained. Even with a large number of instances (approx. 50.000) the prototype performed very well.

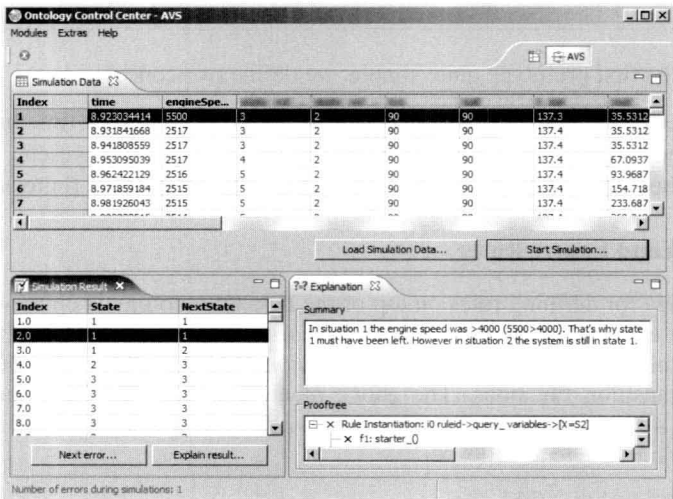


Fig. 1. Screenshot of the prototype

4 Discussion of the Prototype

The prototype system has been accepted very positively by the responsible engineers and do address their current needs. We have also been able to show the value of the application of ontologies and rules. The most important benefits are thereby:

- Integration of specification and expert knowledge: With ontology and rules, it has been possible to merge two completely different sources of knowledge and make them processable by computers. Therefore, a high automation of performing data analysis of HiL test results could be achieved.
- Evolving rule bases: The rule base does not necessarily need to be complete at any time. In fact the better the rules are the more errors could be detected automatically. Changing a rule can also be done very quickly. It is important to stress that the presented prototype does not aim to replace current testing technologies or experts but to support the engineers in doing their job more efficiently.
- Sharing and reuse of knowledge: Rules that capture specific knowledge can be centrally stored and made available to a broader audience. Knowledge islands could thus be avoided. In addition, each data analysis is able to apply all previously defined rules. Thus the knowledge about why an error has occurred is not getting lost.
- Explanation of results: The usage of appropriate inference machines allows a detailed explanation of the used rules with only a minimal amount additional work. This may give an engineer a clue for finding and solving an error.

5 Conclusion and Outlook

The complexity of requirements specifications of car components is steadily growing due to the increasing number of software and electronic components in cars and due to the dependency of these components to each other. Each additional electronic component may add up to exponential growth in complexity of dependencies. This results in impossibility for humans to track all dependencies. State of the art algorithms lack the ability of formalizing the underlying knowledge in both, a human and a machine processable way – thus leading to a reduced analysis during the test process. Additionally the formalized knowledge has to be connected with physical test results in a scalable manner.

To overcome these obstacles an ontology and rule based approach on basis of F-Logic has been chosen. F-Logic combines

- a formalization mechanism close to technical language,
- powerful modeling primitives, strong enough to express the dependencies and complexities of technical specification,
- the ability to describe technical formulas and functions,
- an integration mechanism, even capable of ad-hoc integration of current test results,
- and existing paradigms such as deductive databases, logic programming, ontologies and descriptive rules.

With the use of F-Logic the existing knowledge can be formulated in a separate layer, aside the application and aside the data vaults.

The application of ontologies and rules for supporting the testing process of ECUs has shown promising results. We have successfully convinced the decision makers and are now working on the integration of additional ECU functions. Future plans and ideas for evolving the presented approach are:

- Support of different vendors: Various electronic control units are offered by different vendors with exactly the same functionality but different internals. Thus, an adequate support by layered vendor ontologies would be desirable.
- Support regulatory requirements: Every market (e.g. European Union, US) has different regulatory requirements. Instead of defining rules for each market, the regulations could be modelled in market ontologies. Depending on the market an ECU should be tested for, the appropriate ontology can be applied dynamically during data analysis.
- Automated extraction of rules: Since technical specifications are highly formalized, it could be possible to automate the extraction of the essential rules and therefore provide a seamless integration into today's testing infrastructure.

We have shown that ontologies may very well be used to enhance business processes in our special case testing of electronic control units in cars. It has been shown that complex dependencies as well as compliance rules are very well represented using ontologies represented in F-Logic. Especially rules play a crucial role in this application.

This application accelerates the testing process and increases quality at our customer and thus enhances and accelerates the development of new cars as well. This reduces time-to-market in the very end.

Acknowledgement

Achievo Inproware GmbH has been responsible for the development of the presented prototype. Their work has been supported by Ontoprise. Both companies are now cooperating as partners to bring that approach to a broader audience.

References

- [1] Audi. The new Audi A5 / Audi S5 (2007), <http://tinyurl.com/3bv6u3>
- [2] Kifer, M., Lausen, G., Wu, J.: Logical foundations of object-oriented and frame-based languages. JACM: Journal of the ACM 42, 741–843 (1995)
- [3] Ontoprise. How to Use OntoBroker - Users and Developers Guide for the OntoBroker - System / Version 4.3 (2006)