

2210

2220

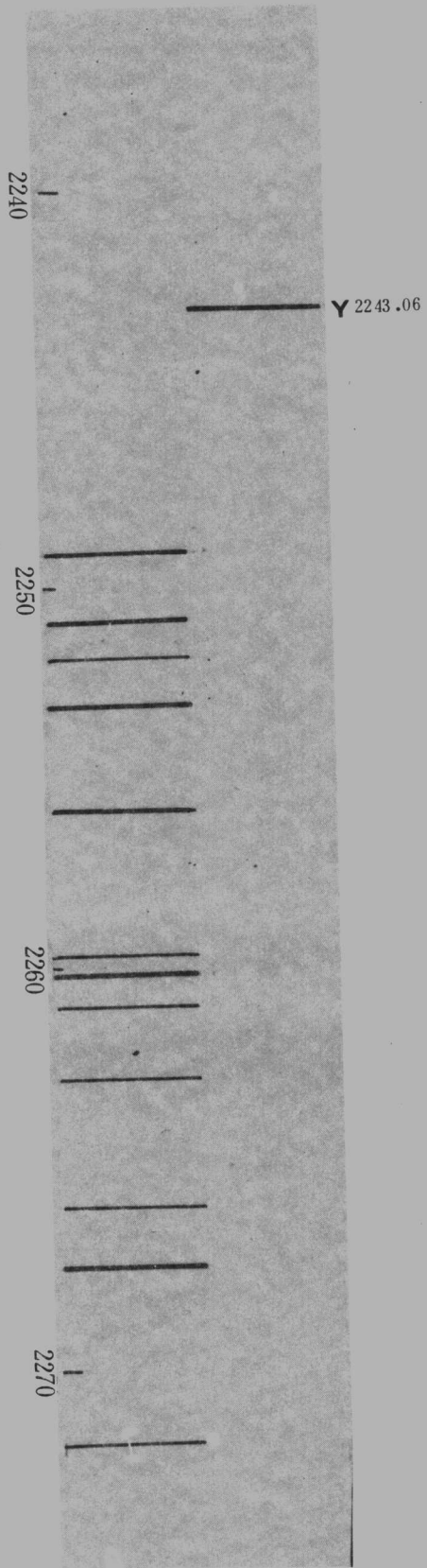
2230

2240

Yb 2224.45

Y 2243.06

ABA 10/202



2270



Lu 2276.94

2280



Tm 2284.80

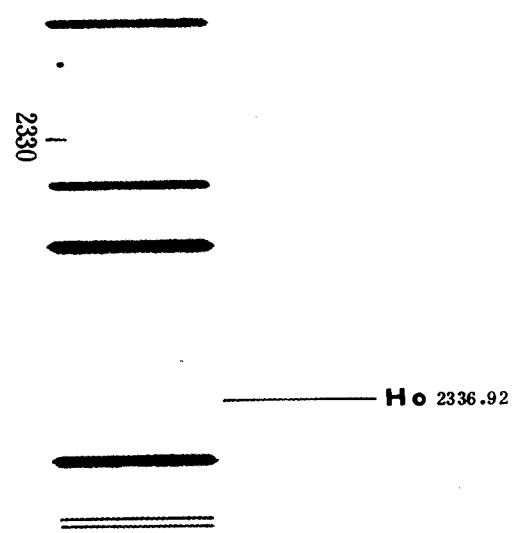
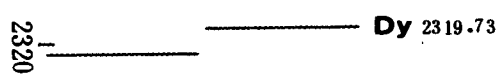
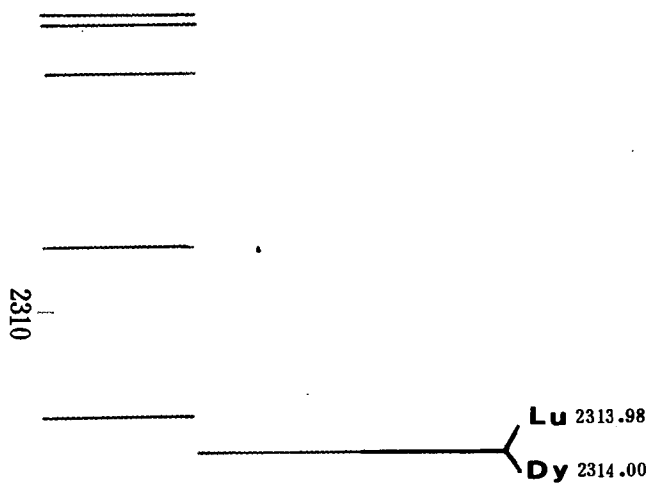
2290

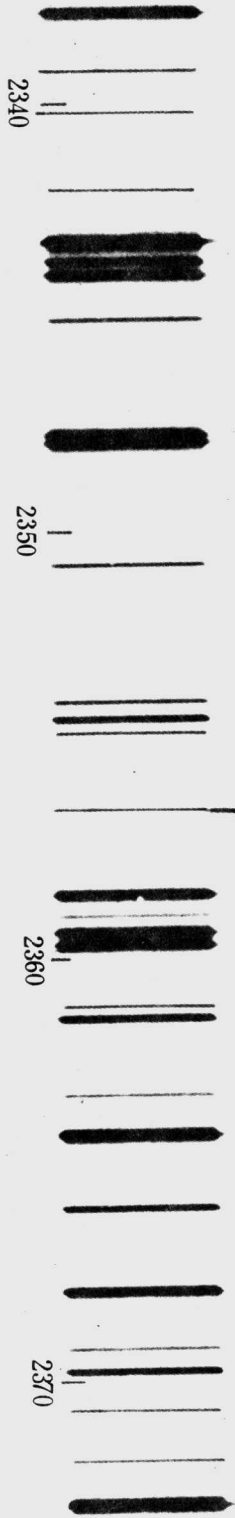


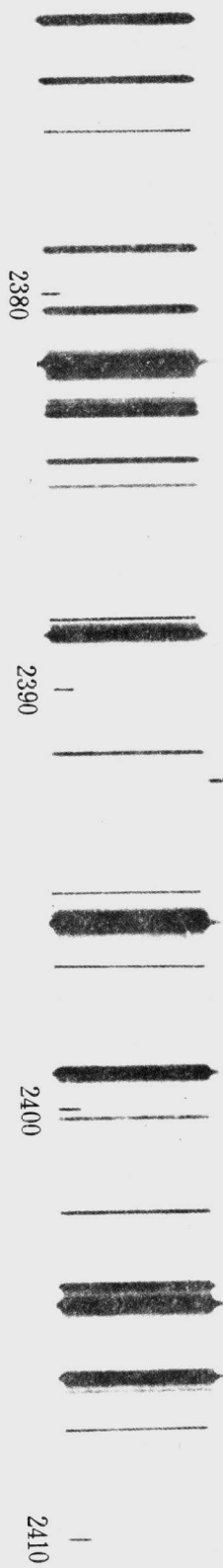
Lu 2297.41

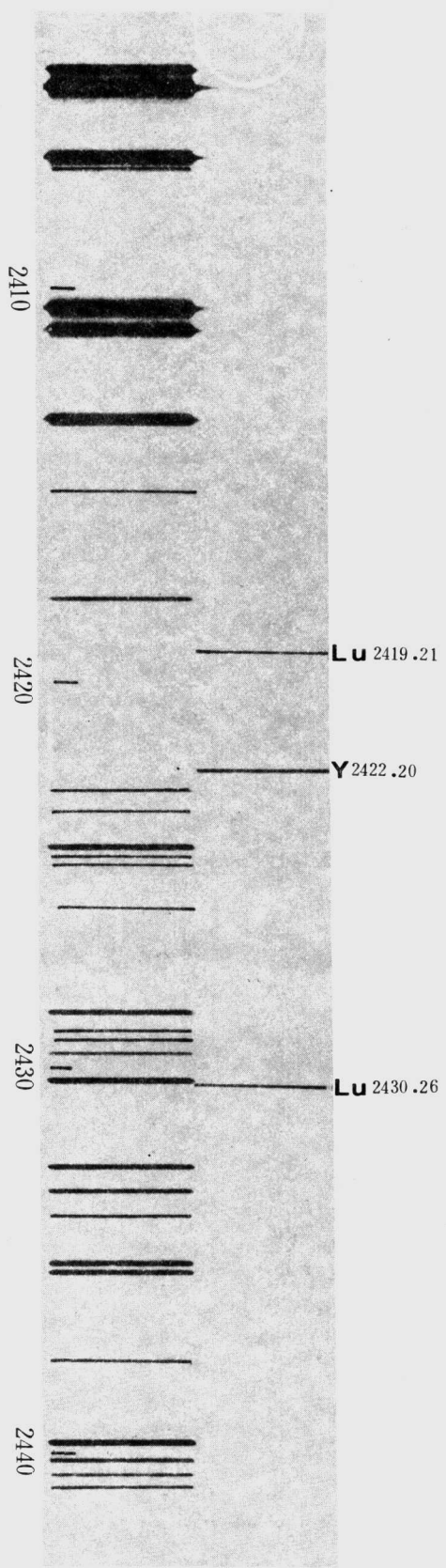
2300

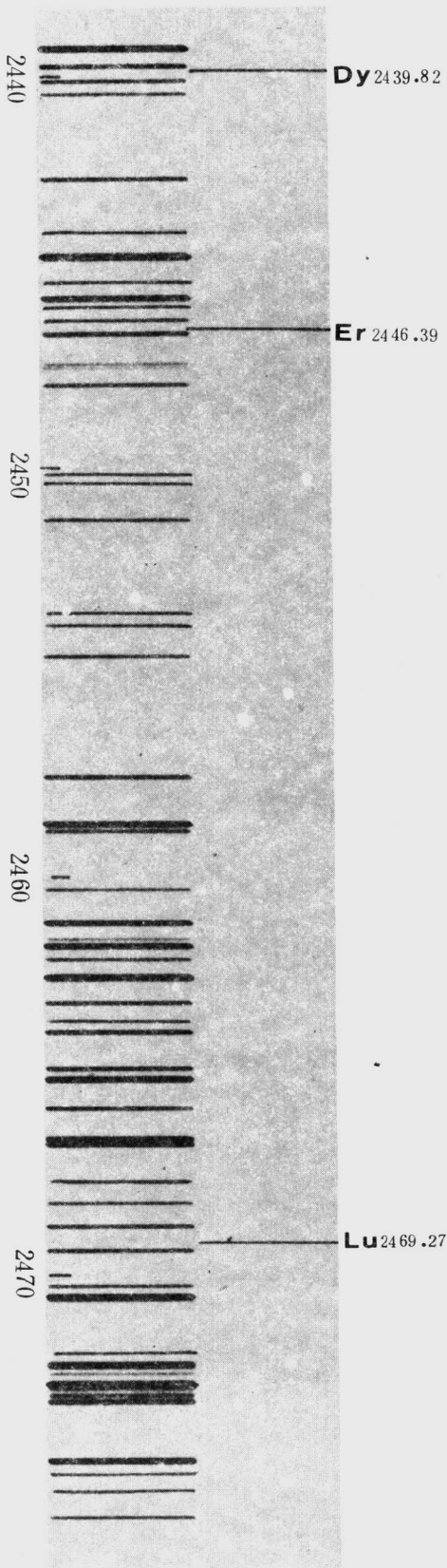


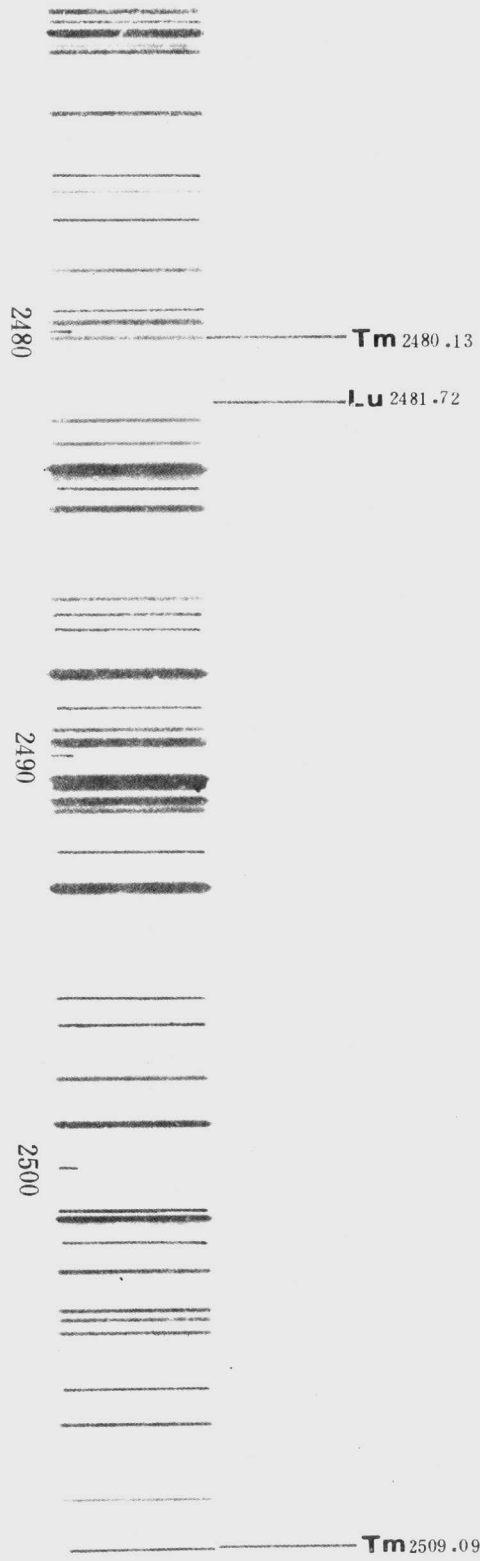


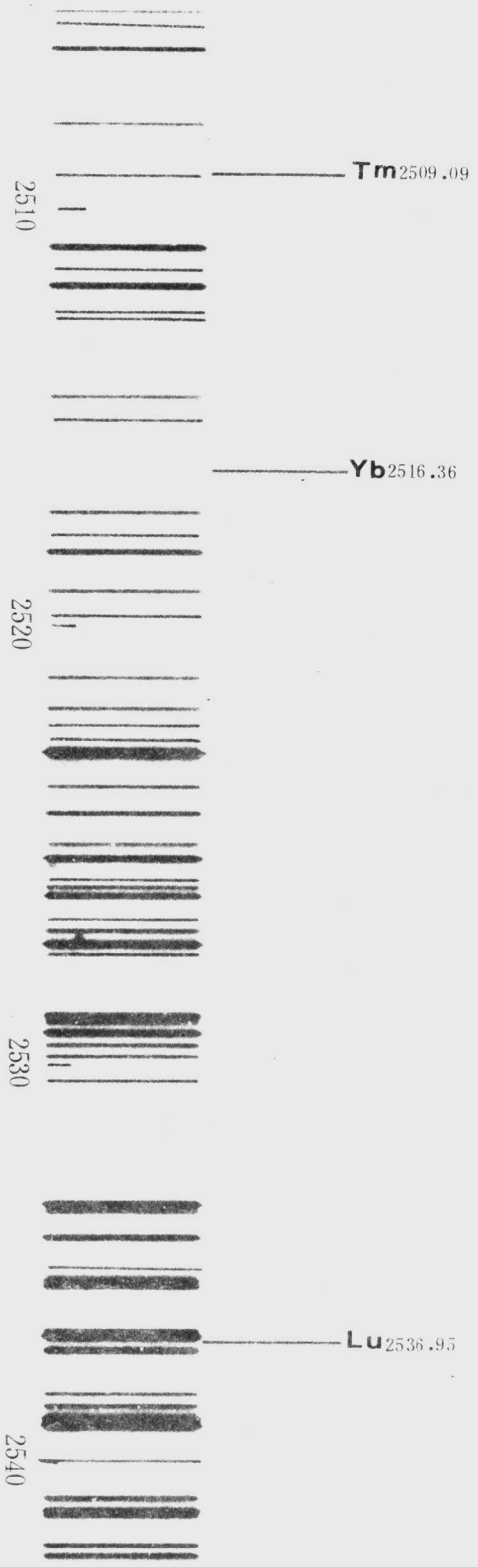


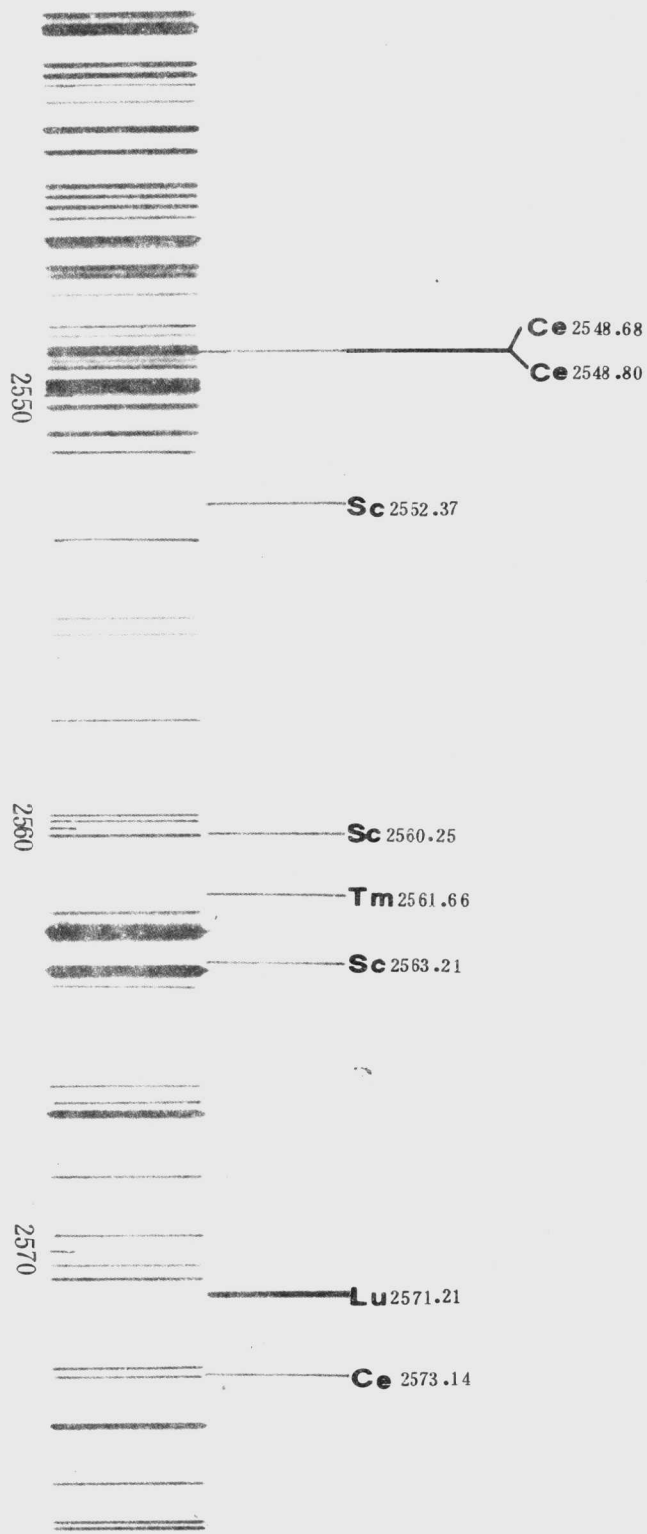


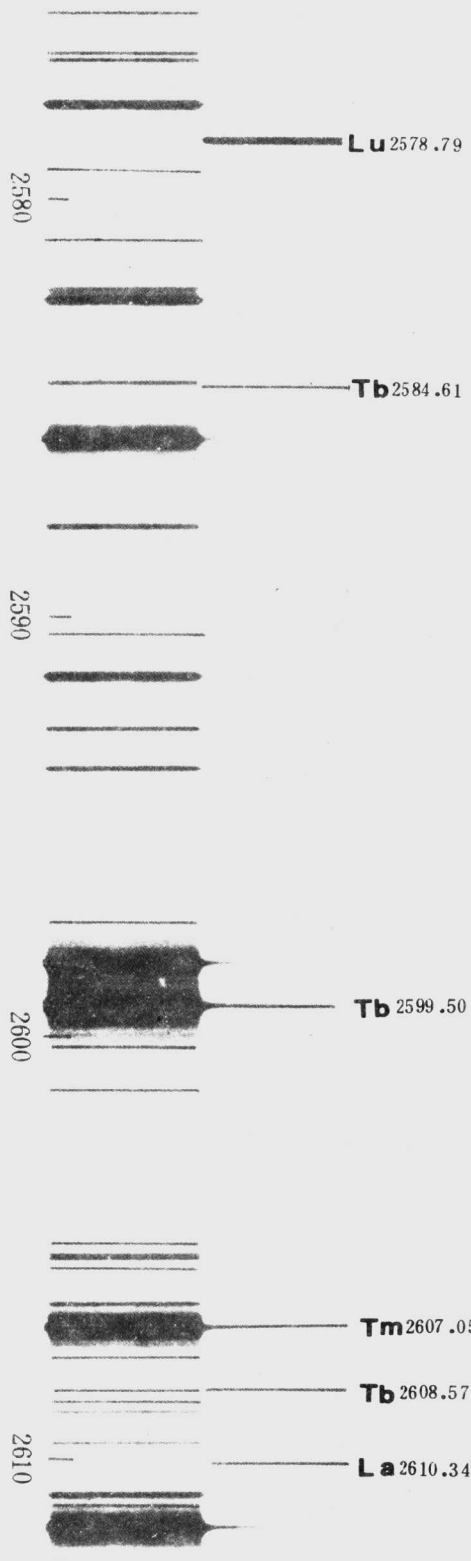


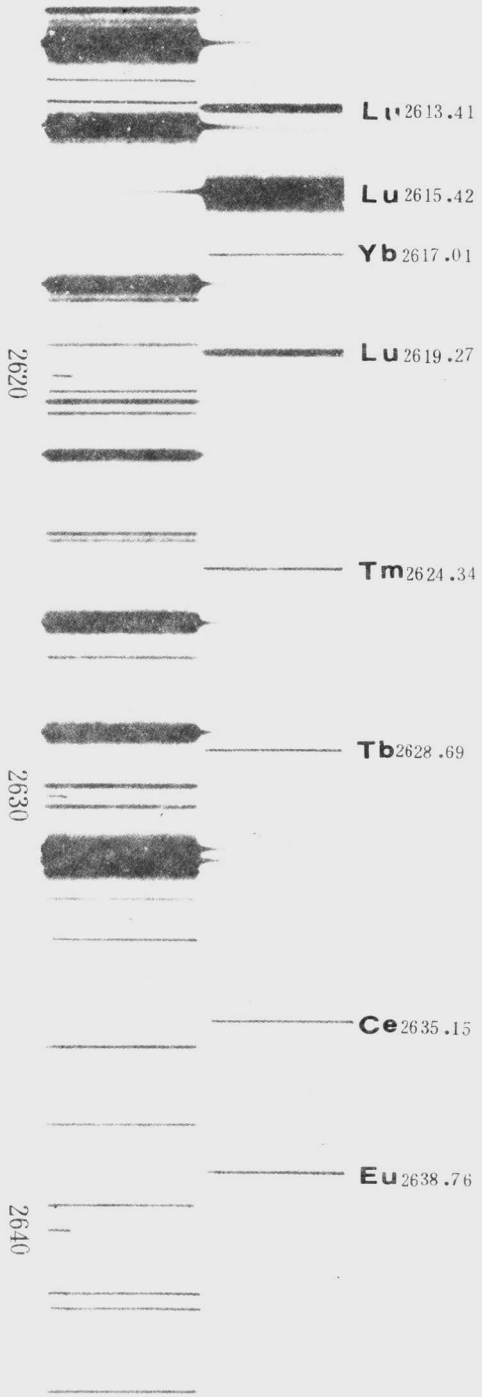


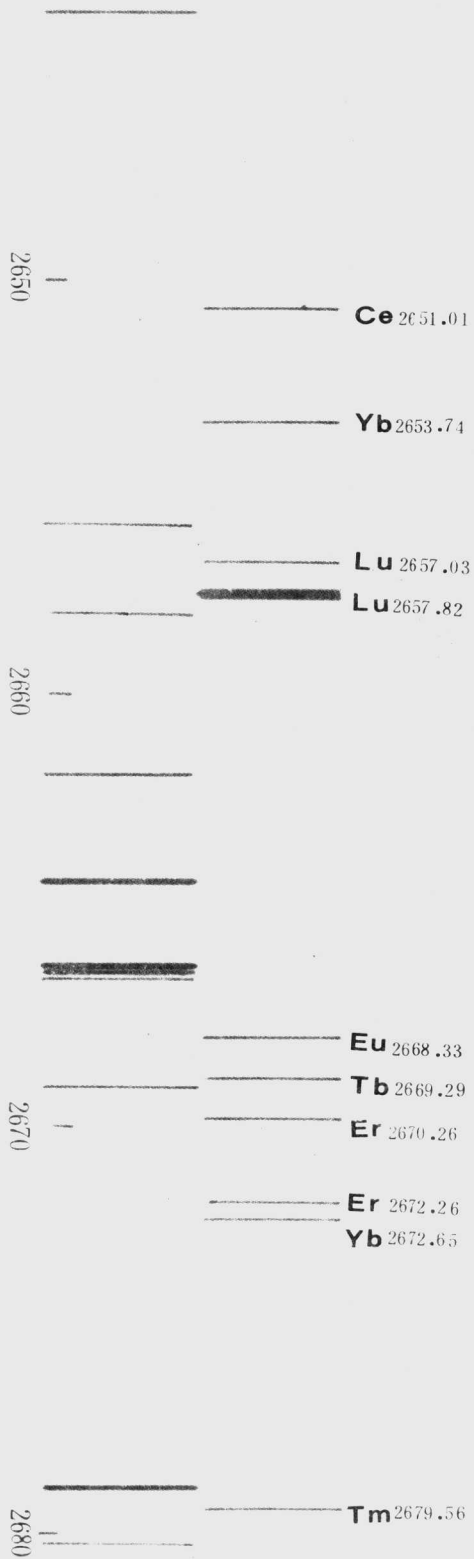


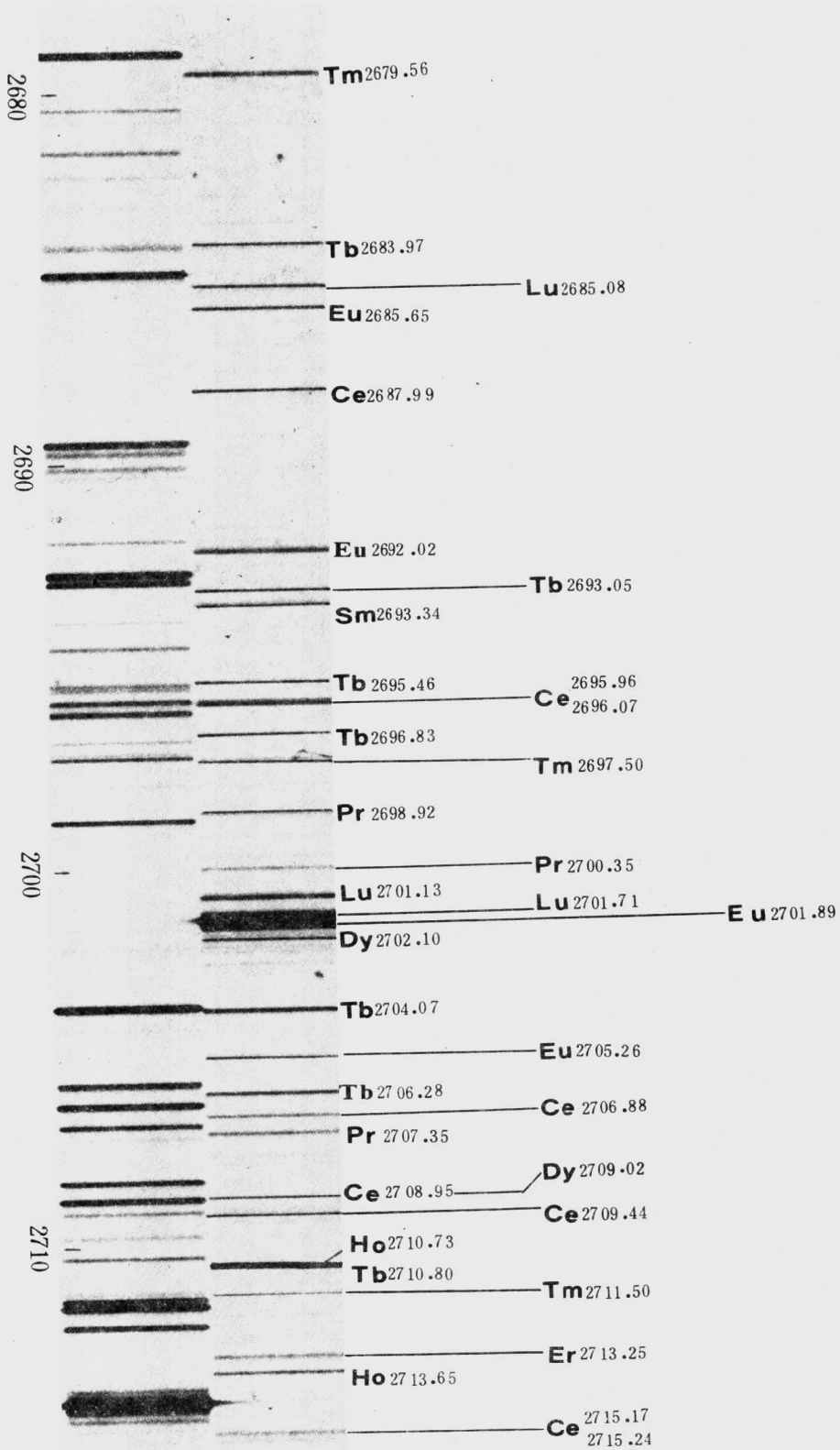


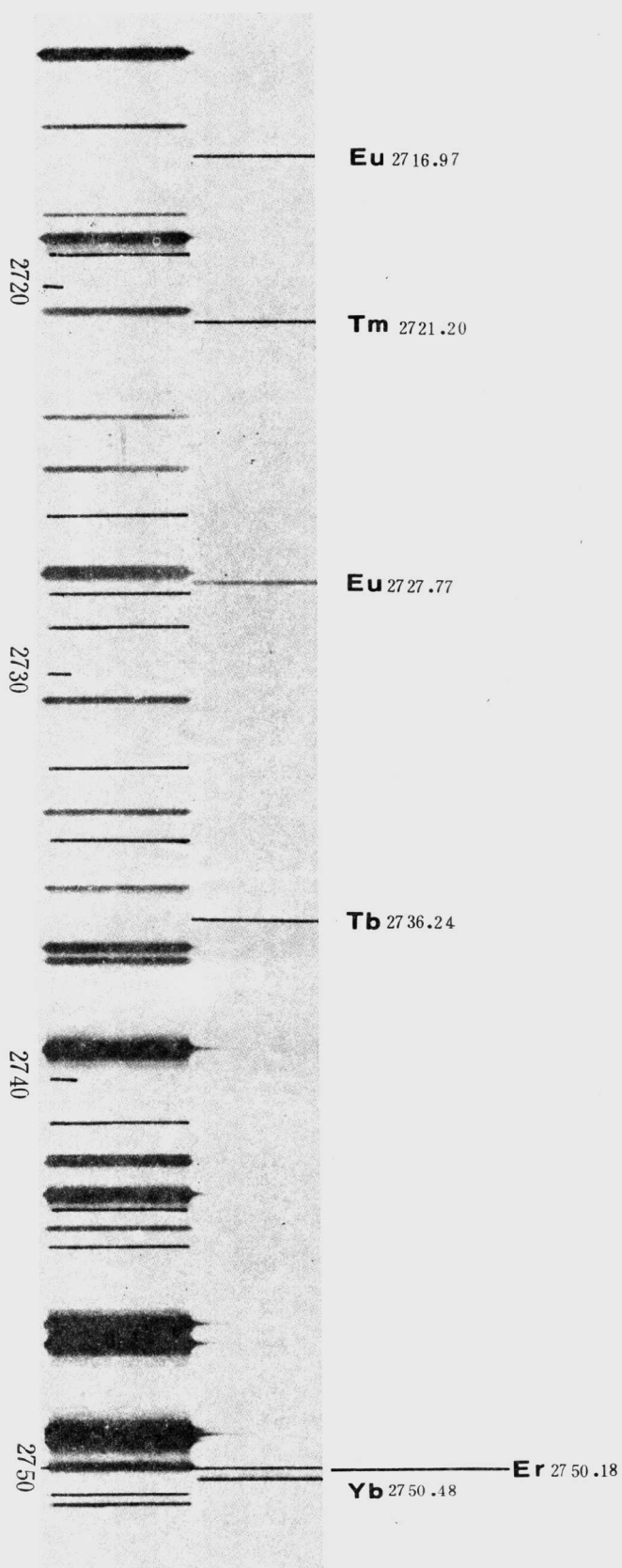












2750 **Er** 2750.18 **Yb** 2750.48

Lu 2754.18

Er 2755.64

2760 **Tb** 2759.47

Ce 2761.42

Ce 2762.22

Gd 2764.06

2770 **Tb** 2769.25 **Gd** 2769.80
Gd 2770.18 **Er** 2769.98

Tm 2777.05

2780 **Tm** 2779.56

Gd 2781.40

Tb 2784.49 **Tm** 2785.08