The background of the cover features two architectural drawings. The top drawing shows a long, multi-story building with a series of columns and a flat roof, possibly a school or institutional building. The bottom drawing shows a more complex, modern building with multiple levels, a central circular structure, and a large glass facade. The overall color scheme is a gradient of green and yellow, with a red and white diagonal stripe running across the bottom.

现代香港建筑

NEW HONG KONG ARCHITECTURE

中国计划出版社

贝思出版有限公司

现代

香港

建筑

建筑

NEW HONG KONG ARCHITECTURE

中国计划出版社

贝思出版有限公司

图书在版编目 (CIP) 数据

现代香港建筑/中国计划出版社编 - 北京: 中国计划

出版社, 1997.10

ISBN 7-80058-593-X

I . 现 … II . 中… III . 建筑工程 - 概况 - 香港 IV . TU-862

中国版本图书馆 CIP 数据核字 (97) 第 22122 号

ii

现代香港建筑

出版

中国计划出版社

地址: 北京市西城区月坛北小街2号3号楼

邮政编码: 100837 电话: (010) 6803 0048

贝思出版有限公司

地址: 香港柴湾嘉业街18号明报工业中心B座607-8室

电话: (852) 2897 1688

发行

各地新华书店发行

设计制作及电分

广州贝思广告制作分色有限公司

电话: (020) 86578290

广州大一印刷有限公司

890 × 1193毫米 1/16 12印张 30千字 印数1-4000册

1997年10月第一版 1997年10月第一次印刷

ISBN 7-80058-593-X / TU · 46 定价: 150元

出版说明

《现代香港建筑》辑录了一九九六年香港建筑师学会年奖的四十一个参展工程项目。这个比赛源于一九六五年，由香港建筑师学会举办，目的是鼓励香港建筑同业设计及创造更多出色的工程项目。过去三十三年，各建筑设计单位付出不少努力，创造高质素，设计新颖的工程项目。

本届的参展作品亦不遑多让，有融汇中国传统建筑与环保意念为一体的岭南学院、将建筑、室内设计及工程结构幻化成“一体建筑”的香港圣殿、把空间意念发挥得淋漓尽致的西港岛中学、利用电影艺术的元素化成建筑视觉的百老汇电影中心等。这些作品，不但给我们带来无限的惊喜，更充分反映香港的建筑特色——充满朝气及国际化。

我们期望在不久的将来，香港的建筑界能够为我们带来更多惊喜，创造更多优秀的建筑作品。

FOREWORD

New Hong Kong Architecture" covers the 41 entries of the recent 1996 Hong Kong Institute of Architects (HKIA) Annual Awards - a yearly competition launched by the Hong Kong Institute of Architects since 1965 to encourage local architectural firms to create and design much more outstanding projects. In the past 33 years, many innovative and high quality projects have been submitted to the Institute.

This year we have many excellent projects, like Lingnan College which successfully combines traditional Chinese architecture and the concept of environmental protection; Hong Kong Temple, a classical example of "architecture in totality" where the building structure is wonderfully co-ordinated with the architectural and interior design; West Island School, a project where the spatial organisation fulfills the functional requirements well; and Broadway Cinematheque, a project which has been successful in integrating the process of movie-going by visualising elements of the movie art into the architectural design. These projects not only bring us many delightful surprises, but interpret Hong Kong's unique architectural characteristics - vibrant and international.

In future, we hope that better and more exciting buildings will be the fruits of Hong Kong architects' creativity.

目录 Contents

赤柱村道二十六至三十号	26-30 Stanley Village Road	2
浅水湾道八十五号	85 Repulse Bay Road	8
突破青年村	Breakthrough Youth Village	12
百老汇电影中心 (会长奖状)	Broadway Cinematheque (President's Prize)	18
明爱陈震夏郊野学园	Caritas Chan Chun Ha Field Studies Centre	24
青山医院重建工程第一期 (第一阶段)	Castle Peak Hospital Redevelopment Phase I (Stage 1)	28
中汇大厦	Central Tower	34
周亦卿楼 (香港大学第五期重建工程)	Chow Yie Ching Building(HKU Phase 5 Redevelopment)	38
皇后山警犬宿舍	Construction of Dog Kennels at Burma Lines	42
歌和老街公园既壁球及乒乓球中心	Cornwall Street Park and Squash & Table Tennis Complex	46
东汇广场	Eastern Central Plaza	50
逸东酒店 (扩建) 及普庆广场	Eaton Hotel (Completed with Extension) & Astor Plaza	54
显裕中心	Glorious Centre	58
香港房屋委员会展览中心	Hong Kong Housing Authority Exhibition Centre	62
香港国际学校初中部	Hong Kong International School, Middle School	66
香港圣殿 (优异奖)	Hong Kong Temple (Certificate of Merit)	70
赛马会环保楼	Jockey Club Environmental Building	74
赛马会屯门盲人安老院	Jockey Club Tuen Mun Home for the Aged Blind	80
联校运动设施	Joint Sports Facilities	84
高山剧场扩建	Ko Shan Theatre (Improvement Works)	88
九龙寨城公园	Kowloon Walled City Park	94
利安邨	Lee On Estate	98
岭南学院屯门新校舍 (第一期) (优异奖)	Lingnan College, Tuen Mun New Campus Development (Phase I) (Certificate of Merit)	102
力保保卫大厦	Lippo Protective Tower	110
红棉道缆车总站	Lower Peak Tram Station	114
玛利诺书院新翼	New Wing to Maryknoll Convent School (Secondary Section)	118
香港公开进修大学	Open Learning University of Hong Kong	124
元朗凹头实用中学	Practical School at Au Tau, Yuen Long	130
元朗谷亨街公厕环境改善工程	Public Toilet at Kuk Ting Street, Yuen Long (Environmental Improvement)	134
显辉中心	Radiant Centre	140
石荫东第一期	Shek Yam East Estate Phase 1	144
海怡半岛	South Horizons	148
海星堂室内设计	Star of the Sea Church (Interior Fitting Out Works)	152
天主教马鞍山圣方济堂	St. Francis Church at Ma On Shan	156
八号码头, 西部发展工程	Terminal 8 West Development	162
香港大学徐展堂楼 (大学画廊及教务大楼)	T. T. Tsui Building (HKU Art Gallery and Academic Offices)	168
王泽森图书馆	Wang Tse Sam Library Renovation	172
蒲窝青少年中心	Warehouse Project	176
西港岛中学 (优异奖)	West Island School (Certificate of Merit)	180
黄竹坑老人护理疗养院	Wong Chuk Hang Complex for the Elderly	184
耀东邨	Yiu Tung Estate	188

Project Name 项目名称:	Stanley Village Road 赤柱村道 26-30 号
Location 地点:	26-30 Stanley Village Road, Stanley, Hong Kong 香港赤柱村道 26-30 号
Function 用途:	Residential 住宅
Design Date 设计日期:	September 1994
Completion Date 完成日期:	September 1996
GFA 总建筑面积:	2,479.5 sq.m.
Site Area 地盘面积:	3,306 sq.m.
Executive Architect 建筑师 (主管):	RMJM Hong Kong Limited 罗麦庄马香港有限公司
Concept Design Architect 建筑师 (概念设计):	Steven Nelson
Developer 发展商:	First Pacific Davies 第一太平洋戴维斯
Project Management 项目管理:	FPD Building & Project Services Ltd

M&E Consultant 机电工程顾问:	Meinhardt (M&E) Ltd. 迈进机电工程顾问有限公司
Civil/Structural Consultant 土木/结构顾问:	John Connell & Associates Ltd. 康隆工程顾问有限公司
Quantity Surveyor 工料测量师:	Davis Langdon & Seah HK Ltd. 威宁谢香港有限公司
Landscape Consultant 园林顾问:	Clouston Landscape Architects Planning Consultants 奥顿顾问园装规划师

Project Description

Site and Design Constraints

The site was developed for residential use in accordance with the lease conditions. A GFA of 2,479.5 sq.m. with maximum site coverage of 25% or 826.5 sq.m. were permitted.

The buildings are of maximum 3 storeys over a single storey car park.

The site is set back from Stanley Village road. There is a natural slope of 2 metres across the site. The site has all internal views as adjacent sites are mainly thick vegetation and under developed.

The Design

The new residential accommodation is arranged as 4 separate blocks of equal size each containing 2 apartments of 103.27 sq.m. and 2 duplexes of 195.87 sq.m. The blocks are arranged around a 5m X 20m lap pool and

26-30 Stanley Village Road

RMJM Hong Kong Limited



landscaped podium deck. Duplex apartments are on Level 2 and Level 3 of each block, with smaller apartments on level one. Ground Level is used for car parking and has direct access to each residential block. Each block looks onto a more private garden area at the rear along the perimeter of the site.

The design concept of the four blocks creating a leisure courtyard with internal views for residents is reinforced through the introduc-

tion of axial plan simple planar building facades clad with 600 X 600 light grey ceramic tiles. Colours on buildings give way to deep blue of pool, natural landscape vegetation and light colours of limestone surface stone.

项目简介

此建筑物的地盘面积为三千三百零六平方米，其发展是根据地契作为住宅用途。总建筑面积为二千四百七十九点五平方米，覆盖率为百分之二十五，或八百二十六点五平方米。

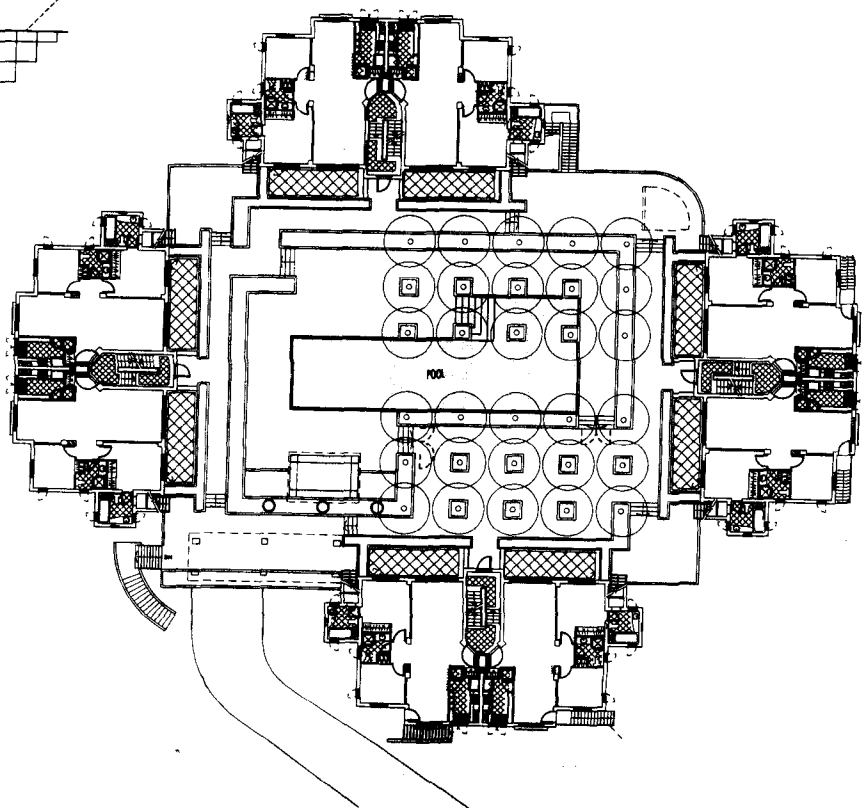
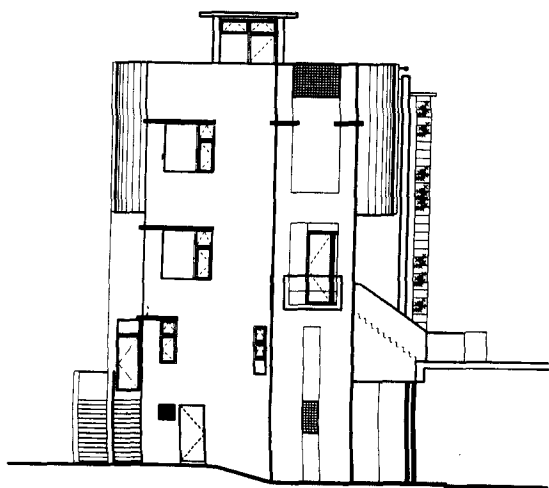
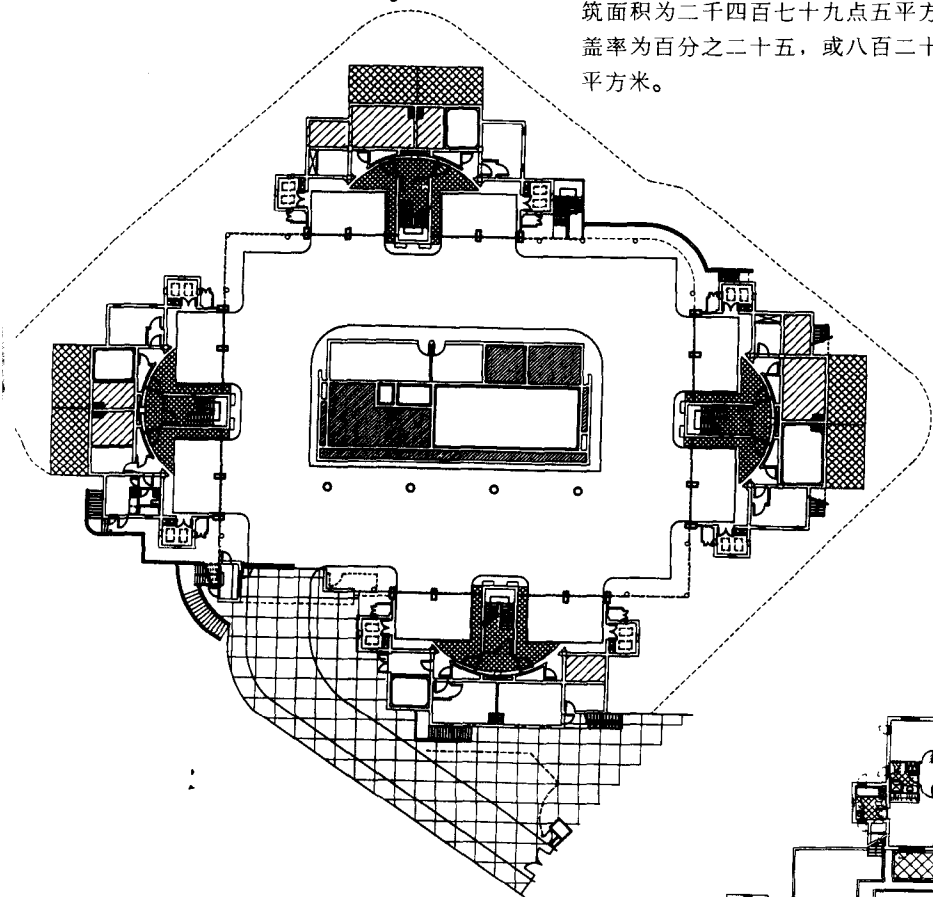
建筑物最高为一层停车库上加三层住宅。

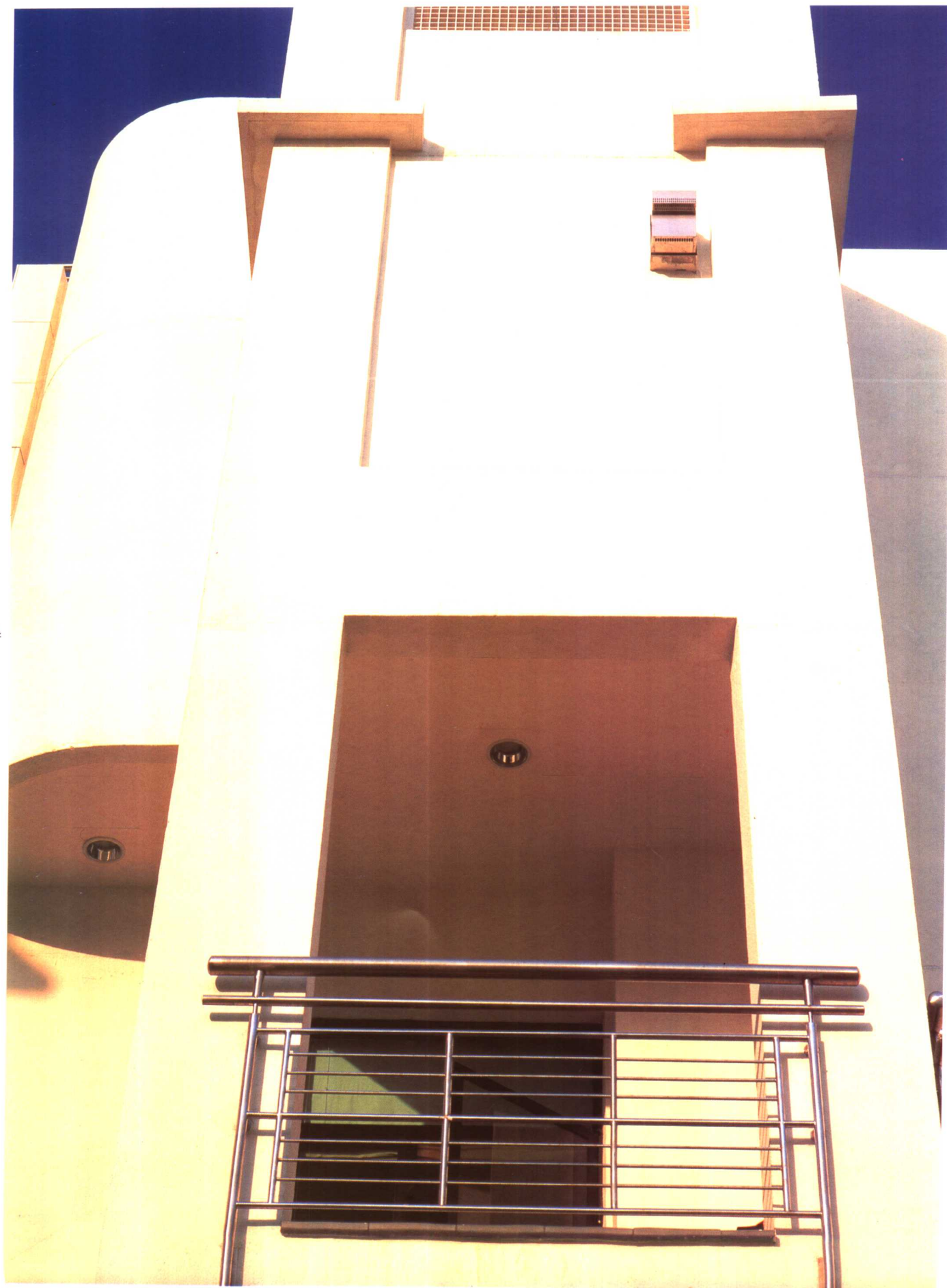
地皮并不接近赤柱村道，而地块有约两米之坡度。

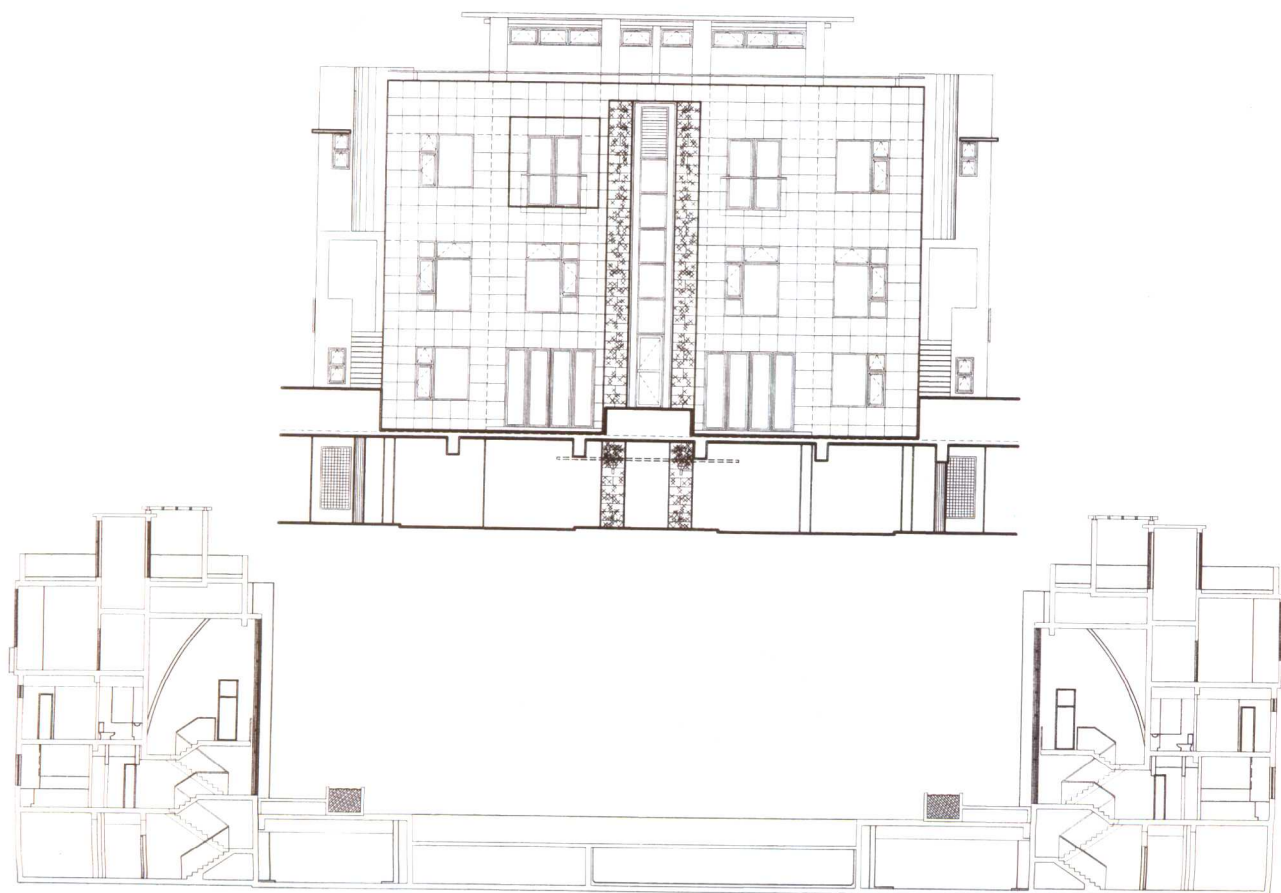
设计要点

此新住屋设计为四座，每座包括有两个单层单位（每个占一百零三点二七平方米）及两个覆式单位（每个占一百九十五点八七平方米）。每座均围绕着五米乘二十米的游泳池及园林平台。一楼为单式单位，二、三楼为覆式单位。首层用作可供车辆直达每座大楼的入口大堂。每座地下都有一个私家后花园。

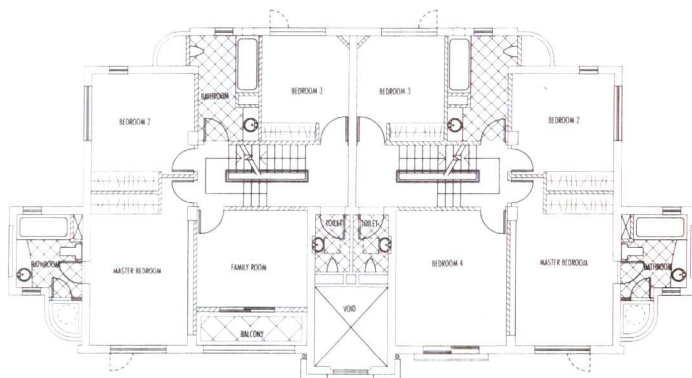
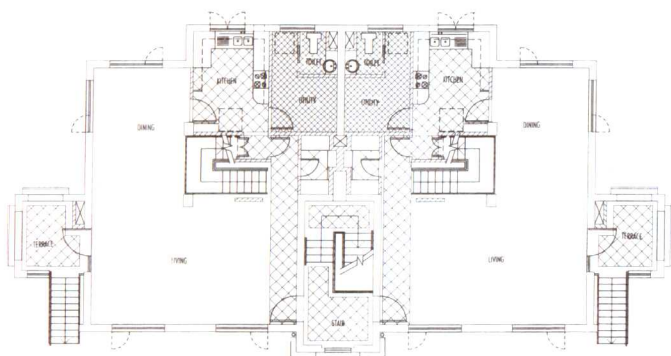
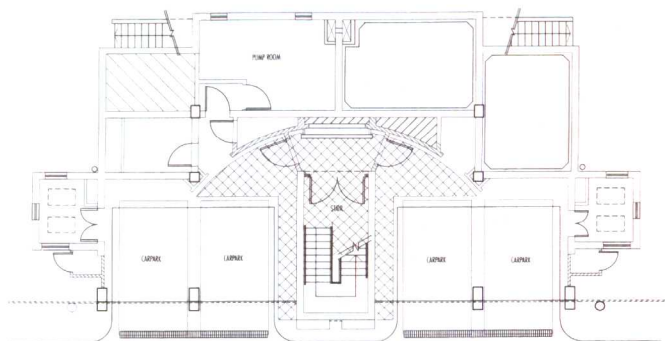
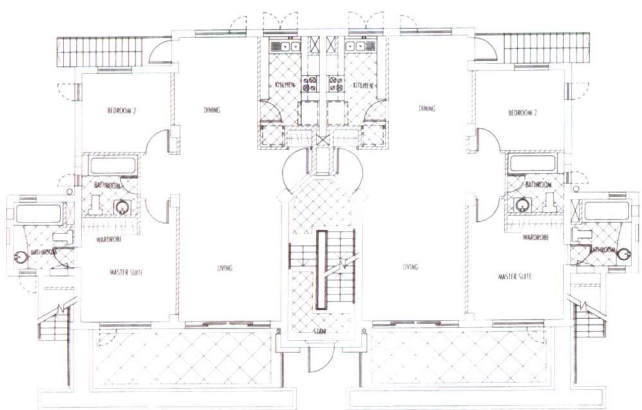
设计主旨务求凝造出休闲的中庭，故利用中轴设计加强其效果。简洁的立面采用六百乘六百浅灰面砖。而其他涂上白色的漆油。颜色方面着重用在深蓝的泳池、自然的园林花草及浅色的石灰石面。











Project Name 项目名称:	85 Repulse Bay Road 浅水湾道八十五号
Location 地点:	85 Repulse Bay Road 浅水湾道八十五号
Function 用途:	Private Residence 私人住宅
Design Date 设计日期:	March 1994
Completion Date 完成日期:	August 1996
CFA 总建筑面积:	1,500 sq.m. (approx.)
Site Area 地盘面积:	1405 sq. m.
Developer 发展商:	Esther & Victor Ltd.
M&E Consultant 机电工程顾问:	P&T (M & E) Ltd. 巴丹拿机电工程业务有限公司
Structural Consultant 结构顾问:	P & T Architects and Engineers Ltd. 巴丹拿建筑及工程师有限公司
Quantity Surveyor 工料测量师:	Levett and Bailey Chartered Quantity Surveyors 利比建筑工料测量师
Geotechnical Consultant :	ESA Consulting Engineer Ltd.
Landscape Consultant :	Peter Tan & Associates

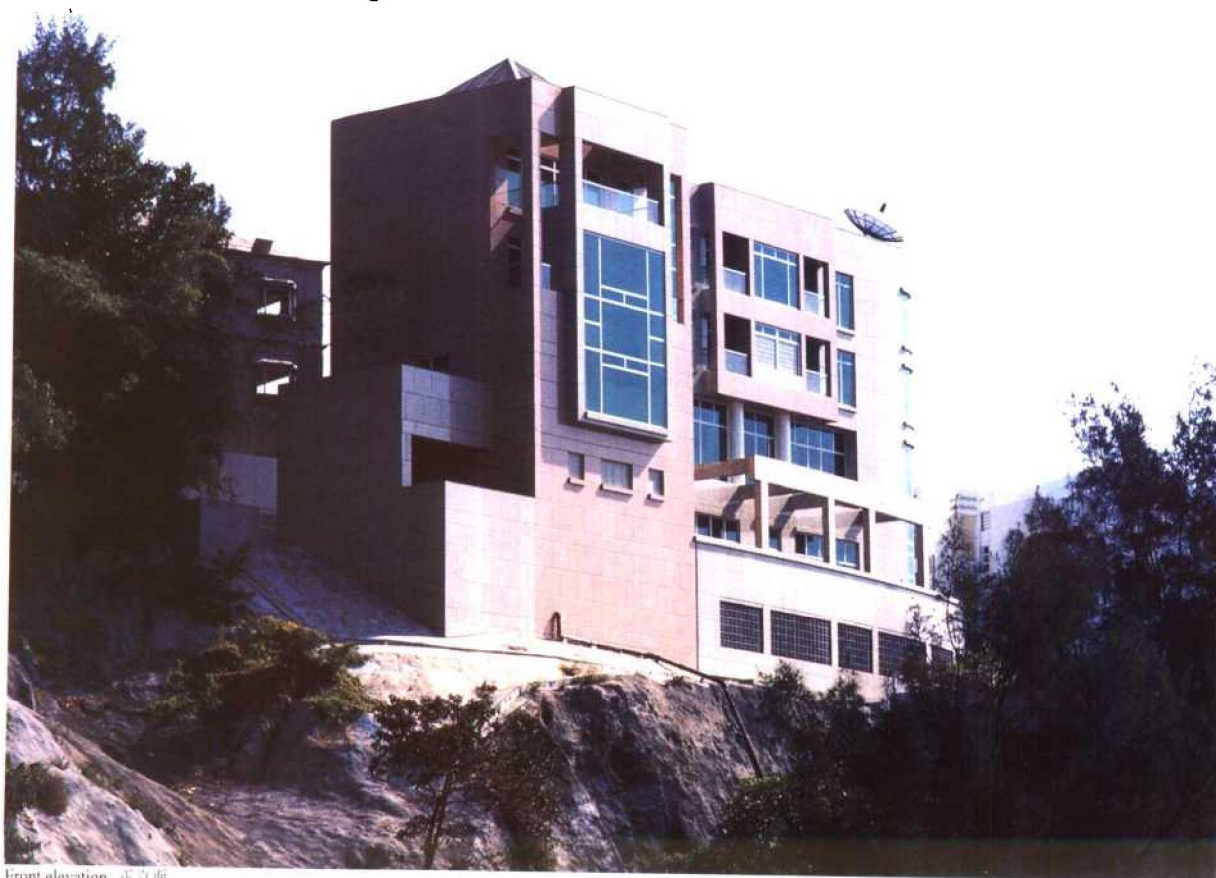
Project Description

The site for the residential development is prominently located at 85 Repulse Bay Road in one of the most prestigious residential districts in Hong Kong. Situated on a very steep slope, the site enjoys panoramic views on 2 sides towards Deep Water Bay, Repulse Bay, South Bay, and beyond.

With such a unique setting, the first concern of our design is to utilize the natural assets of the site. Our proposal for the private residence ensures that all living spaces of the residence will enjoy sea views across different sections of Hong Kong South. The residence is also positioned as far back from Repulse Bay Road as possible to preserve the natural slope and vegetation along Repulse Bay Road.

85 Repulse Bay Road

P&T Architects and Engineers Ltd.



Front elevation 正立面

The private residence is arranged in an elongated plan form to utilize the sea views. The residence provides approximately 1,500 sq. m. of habitable space on 4 levels. The ground level accommodates the entrance hall, covered car park and indoor swimming pool. The first level houses the double height living room, breakfast room and kitchens. Master bedroom, study, entertainment room and other bedrooms are located on the second and third levels.

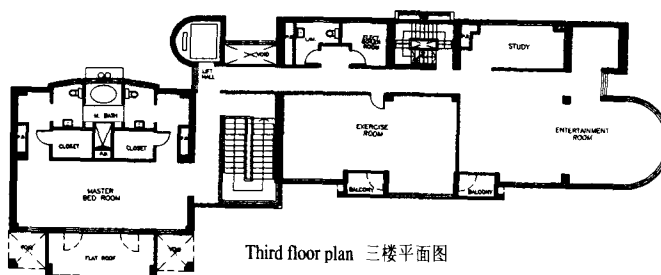
The residence is finished in polished granite and window walls.

项目简介

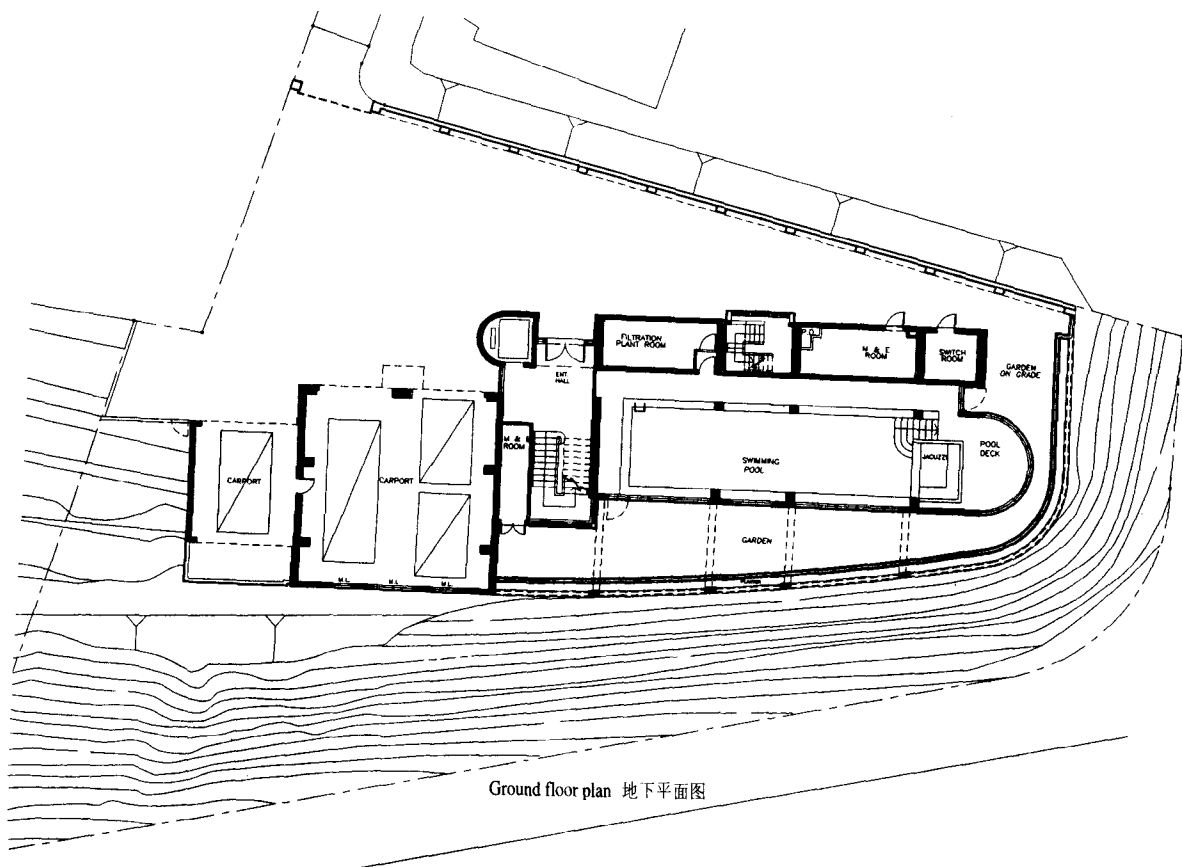
这项私人住宅发展地处香港南区浅水湾道，是香港其中一个著名显赫的高尚住宅区。住宅座落在一个山丘之上，南临深水湾，远眺浅水湾，南湾。海天一色，尽入眼帘。

建筑物的基本设计概念着重地理优势，以争取最佳坐向。故所有厅房皆面向南，尽览南区无限海景。其次住宅的位置尽量远离临近浅水湾道的山坡，以保存沿路及山坡的一切自然生态。

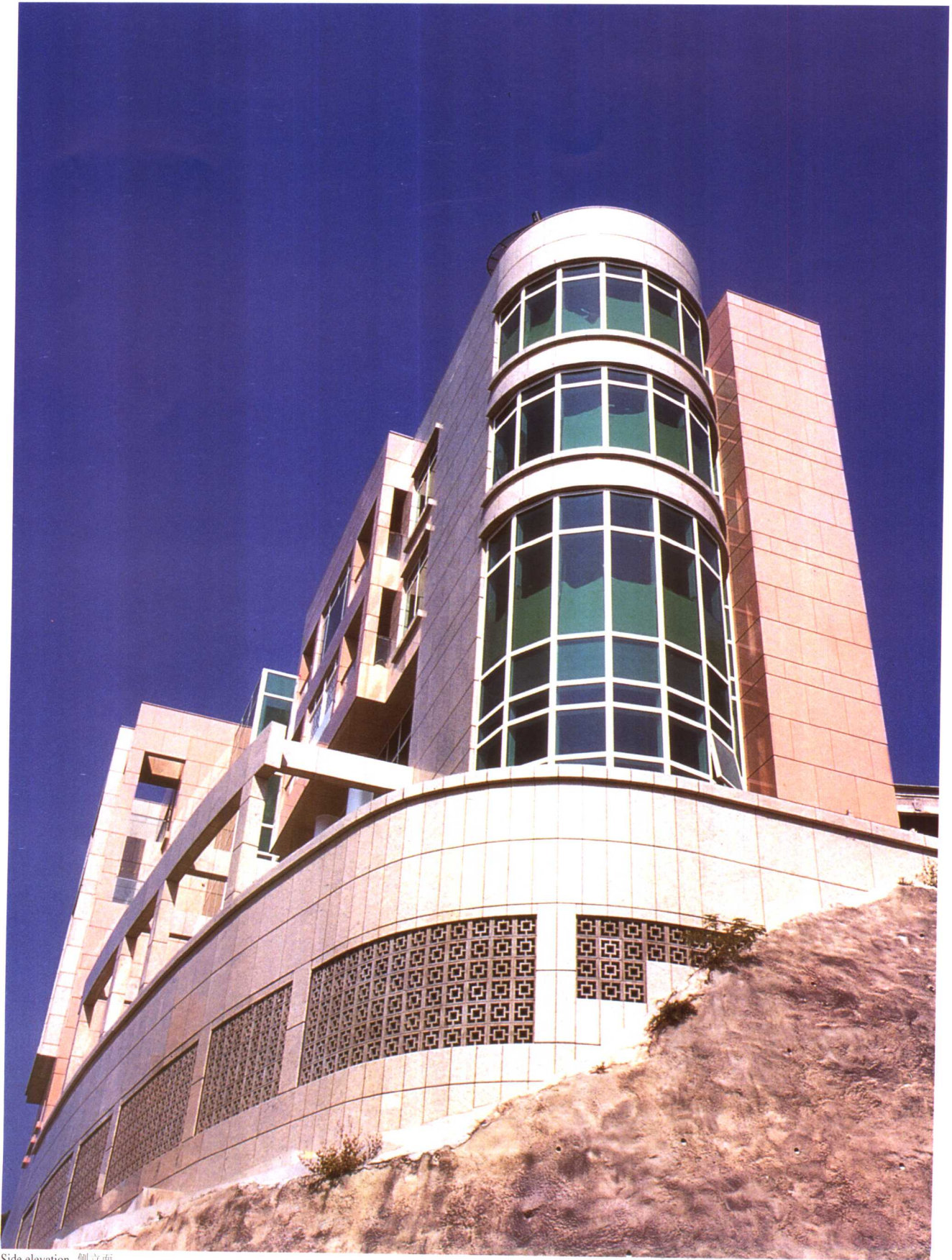
住宅本身设计成长廊形式，以配合最佳景观。四层高住宅的总建筑面积为一千五百平方米，外墙是天然麻石配合玻璃幕墙设计而成。地下设住宅入口大堂，有盖车房及室内泳池；一楼设两层高的客厅，饭厅，早餐房及厨房。二楼及三楼分别设有主人房、书房、娱乐室及睡房。



Third floor plan 三楼平面图



Ground floor plan 地下平面图



Side elevation 侧立面



Detail of front elevation 正立面大样



Detail of front elevation 正立面大样

Project Name 项目名称:	Breakthrough Youth Village 突破青年村
Location 地点:	33 A Kung Kok Shan Road, Shatin 沙田亚公角山路33号
Function 用途:	Youth Services 青少年服务
Design Date 设计日期:	Fall 1992/Spring 1993
Completion Date 完工日期:	April 1996
GFA 总建筑面积:	13,609 sq. m.
Site Area 地盘面积:	8,141 sq. m.
Design Team 设计小组:	Freeman Chan Dickson Wat Autumn Ip Kwok Wing Chan Harvey Wan Barek Lo Alberto Zennaro Daniel Yu Raldy Formantes Mike Stott Keith Tse Rico Chan Nick Choy Grace Wong John Piovesan Jeanette Chan

Developer 发展商:	Breakthrough 突破机构
M&E Consultant 机电工程顾问:	Ove Arup & Partners 雅纳工程顾问
Structural Consultant 结构:	Ove Arup & Partners 雅纳工程顾问
Quantity Surveyor 工料测量师:	WT Partnership 务腾顾问公司
Other Consultants 其他顾问:	Peter Tan & Associates Arup Acoustics

Project Description

Breakthrough is one of Hong Kong's largest charitable, non-profit youth organizations. The 1993 Youth Charter states that the urgent need is for an integrative and holistic approach to youth services.

The purposes of the Breakthrough Youth Village are:

1. to provide facilities for the delivery of programs of education and personality development
2. to provide a place of refuge and rehabilitation for young people from broken and potentially abusive families
3. to provide facilities to explore innovation in models of youth service

Breakthrough Youth Village

Freeman Chan Associates



The Breakthrough Youth Village seen against the Shatin valley with Needle Hill in the distance 突破青年村，背景远处是针山及沙田山谷。