

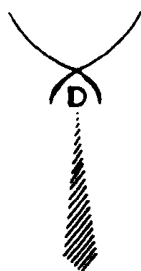
服装大全

孙焯 编



# 现代服装图鉴

中国纺织出版社



孙焯 编

# 现代服装图鉴

## —— 服装大全

中国纺织出版社

(京)新登字 037 号

**图书在版编目(CIP)数据**

现代服装图鉴:服装大全/孙焯编.-北京:中国纺织出版社,1994

ISBN 7-5064-1080-X

I. 现… II. 孙… III. 服装-设计-图集 IV. TS941.2

中国版本图书馆 CIP 数据核字 (94) 第 06566 号

责任编辑:孙兰英

中国纺织出版社出版发行

北京东直门南大街4号

邮政编码:100027 电话:01—4662932

大中印刷厂印刷 各地新华书店经销

1994年6月第一版 1994年6月第一次印刷

开本:787×1092毫米 1/16 印张:17.75

字数:425千字 印数:5000

定价:23.00元

## 内 容 提 要

本书以服装图鉴和款式名称对应形式介绍了现代服装的领、袖、袋、腰及覆肩、裙边设计及款式变化。介绍了服装各部位的设计方式,即嵌饰、覆饰、褶皱、系带、绳带抽拉、悬垂、荷叶边、打褶、缝饰等。并将以上形式融为一体,全面介绍了国际款式衬衣、女裙、连衣裙、套装、外衣、大衣、裤子等近 2000 款。本书内容丰富,款式多、新、全,有中式、法式、英式、帝国式、俄式、印度式、西班牙式、南洋式、非洲式、古罗马式、土耳其式等。

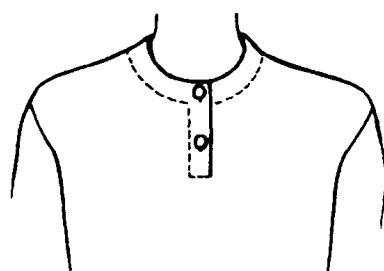
本书可供服装设计制作与选购人员、广大消费者及院校师生阅读。

# 目 录

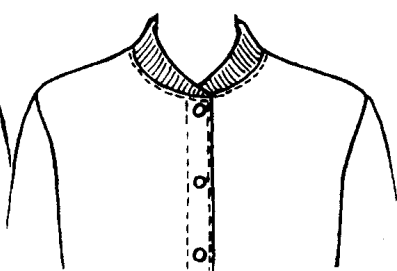
一、领口设计与选择 .....	(1)
二、领子设计与选择 .....	(13)
1. 各种衬衫领的选择 .....	(34)
2. 各种蝴蝶结领的选择 .....	(35)
3. 各种立领的选择 .....	(40)
4. 各种西服领选择 .....	(41)
5. 各种披巾对襟(对叠双排扣)领选择 .....	(43)
6. 各种漏斗领选择 .....	(44)
7. 各种针织罗纹领选择 .....	(44)
8. 各种成褶悬披领选择 .....	(49)
9. 各种翻领选择 .....	(51)
三、袖口设计与选择 .....	(55)
1. 各种花式袖口选择 .....	(61)
2. 各种贴边、翻边袖口选择 .....	(62)
3. 各种打(抽、缝、皱)褶袖口选择 .....	(63)
四、袖子设计与选择 .....	(64)
五、袖山设计与选择 .....	(76)
六、袋形设计与选择 .....	(79)
七、嵌饰设计与选择 .....	(90)
八、覆肩覆饰设计与选择 .....	(94)
九、褶皱设计与选择 .....	(98)
十、系带设计与选择 .....	(103)
十一、绳带抽拉设计与选择 .....	(105)
十二、悬垂设计与选择 .....	(111)
十三、荷叶边设计与选择 .....	(118)
十四、褶边、滚边设计与选择 .....	(122)
十五、皱裥设计与选择 .....	(128)
十六、打褶设计与选择 .....	(130)
十七、裤、裙腰带部饰设计与选择 .....	(139)
十八、裙边设计与选择 .....	(142)
十九、衬裙设计与选择 .....	(144)
二十、缝迹装饰与选择 .....	(146)
二十一、前襟、开口设计与选择 .....	(156)

二十二、衬衣设计与选择 .....	(161)
二十三、女裙设计与选择 .....	(183)
二十四、连衣裙设计与选择 .....	(196)
二十五、外套和套装设计与选择 .....	(223)
二十六、背心设计与选择 .....	(236)
二十七、大衣设计与选择 .....	(241)
二十八、裤子设计与选择 .....	(251)
二十九、连衫裤设计与选择 .....	(270)
三十、针织衫设计与选择 .....	(273)

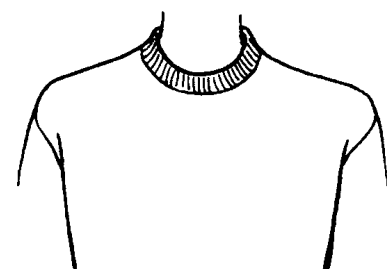
# 一、领口设计与选择



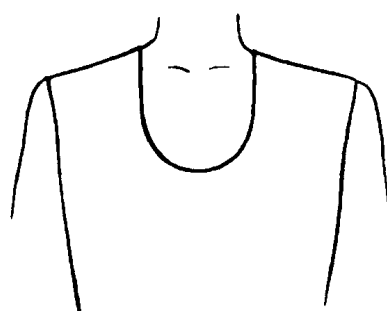
亨利圆领□



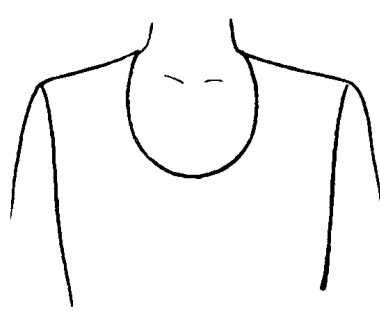
叠罗领□



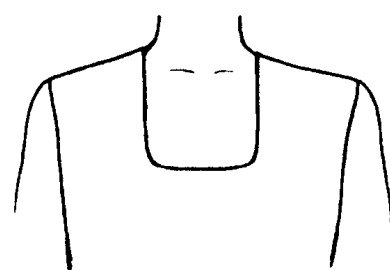
罗□圆领□



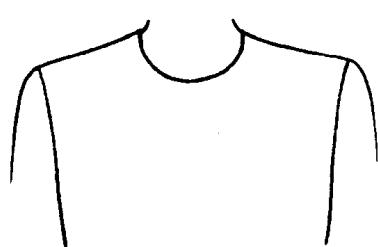
马蹄领□



卵形领□



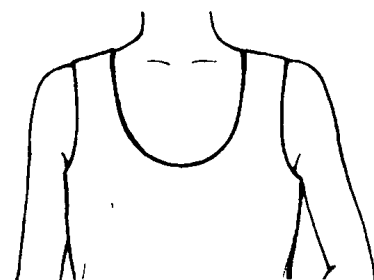
U形领□



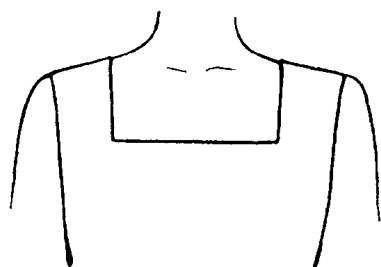
小圆领□



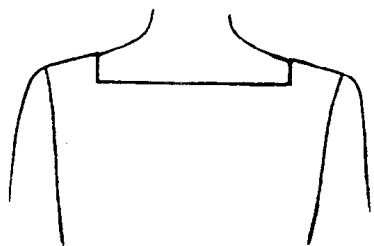
大圆领□



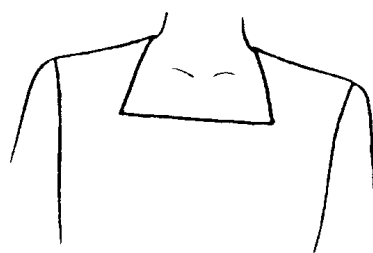
背心领□



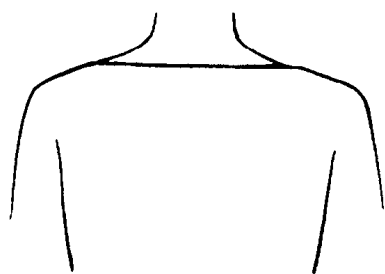
方形领口



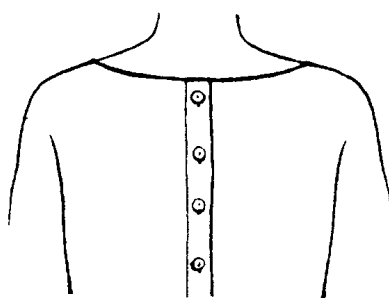
露肩长方形领口



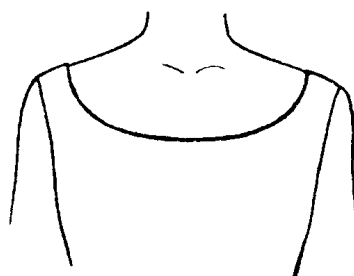
梯形领口(上小下大)



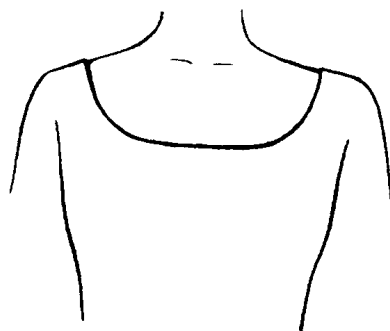
横开叉式领口



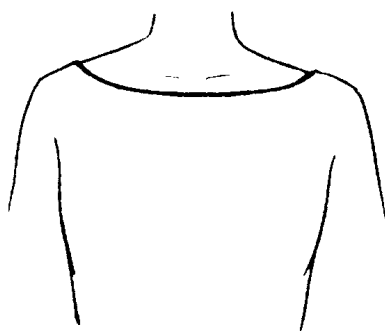
T形领口



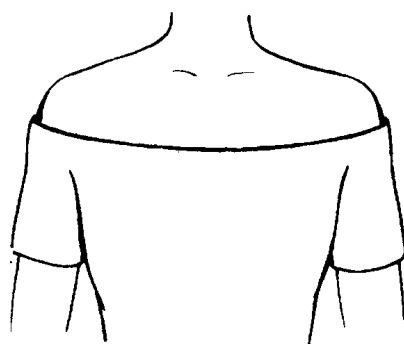
横椭圆领口



汤匙领口

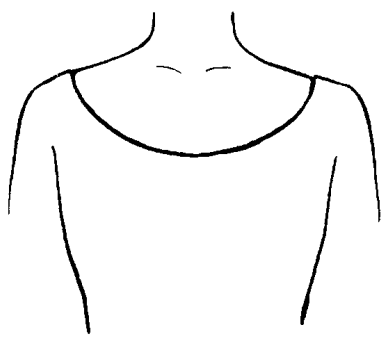


一字圆领口

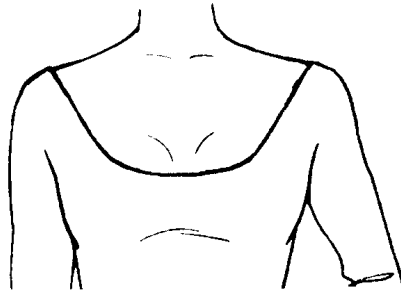


露肩领口

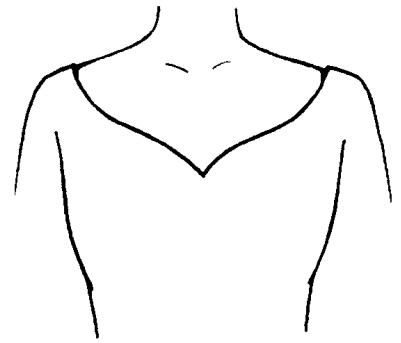




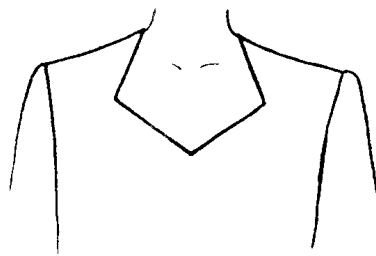
半袒胸领□



袒胸领□



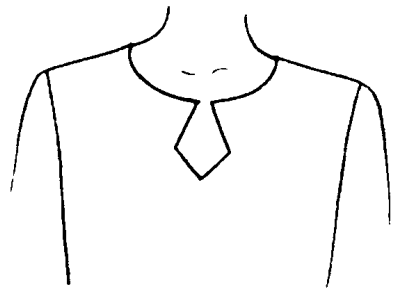
鸡心尖领□



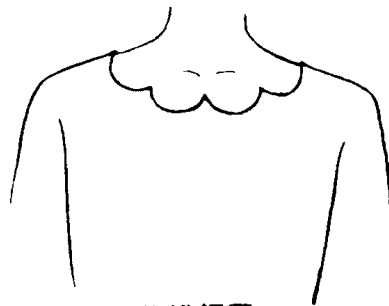
菱形领□



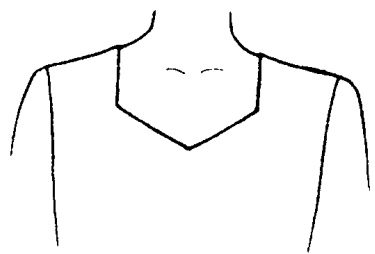
鸡心根领□



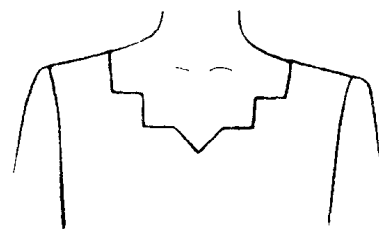
钥匙孔式领□



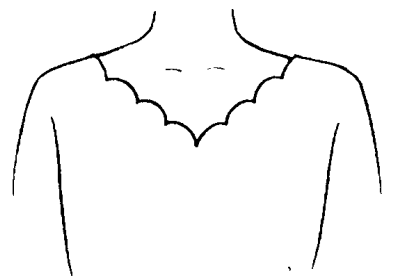
花瓣领□



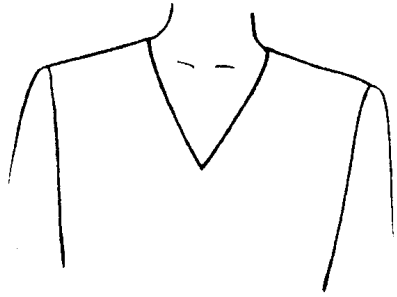
五角形领□



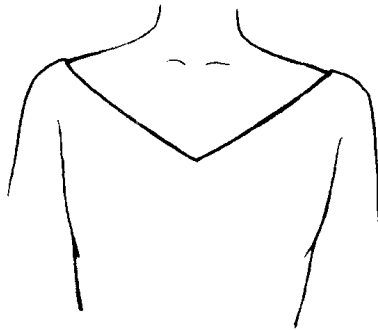
锯齿形领□



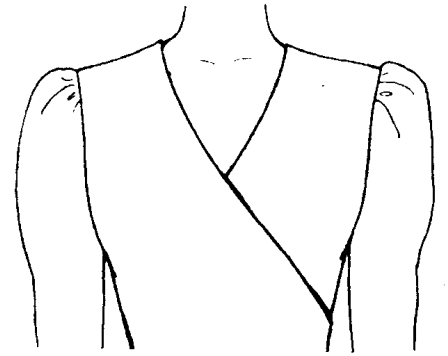
月牙边领□



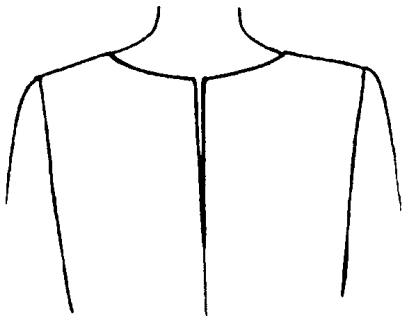
V形领□



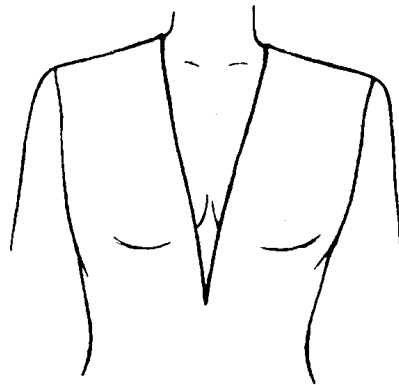
芭蕾舞领□



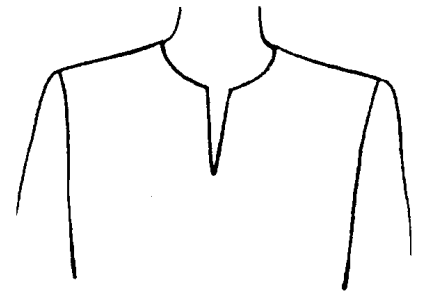
法衣领□



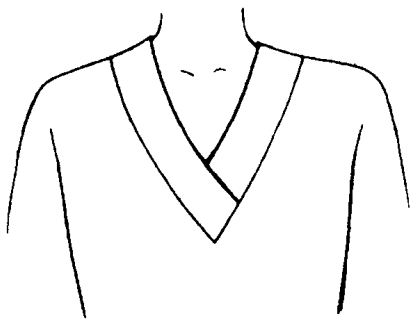
开缝领□



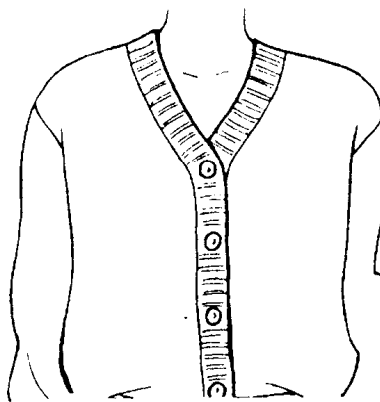
大前开门领□



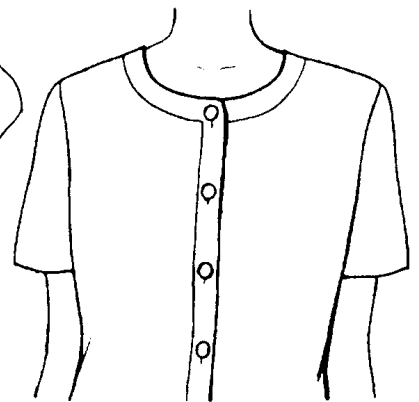
尖形领□



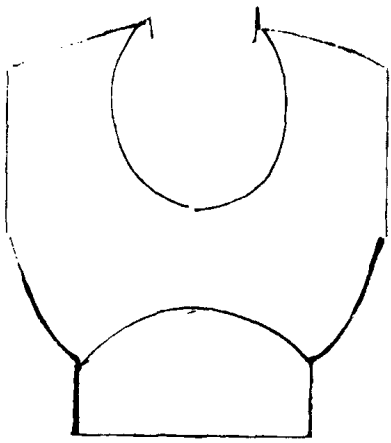
搭缝领□



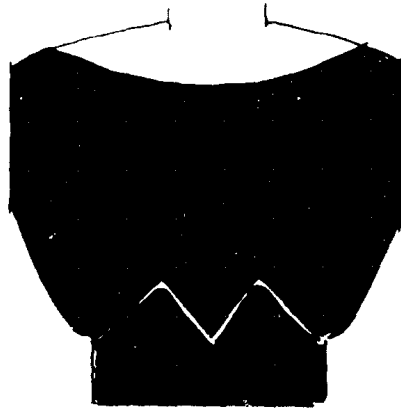
V形开襟领□



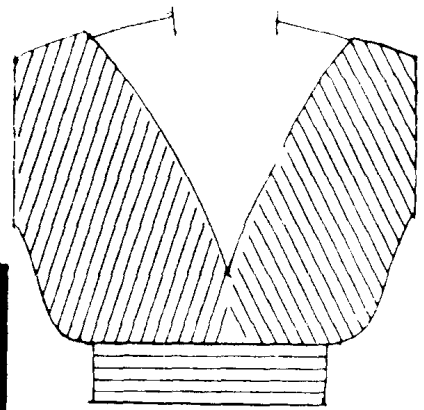
圆形开襟领□



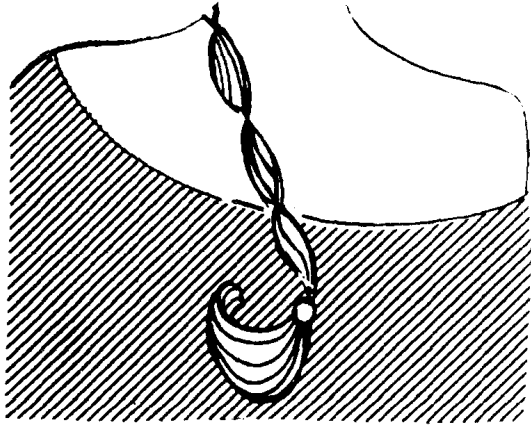
竖椭圆领口



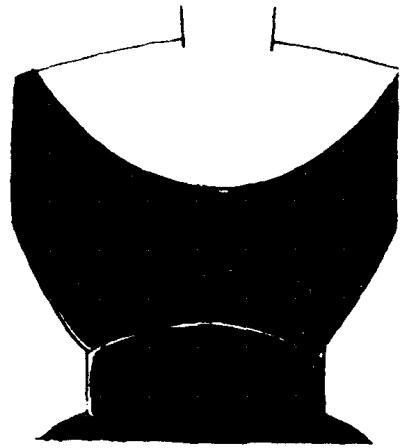
圆弧领口



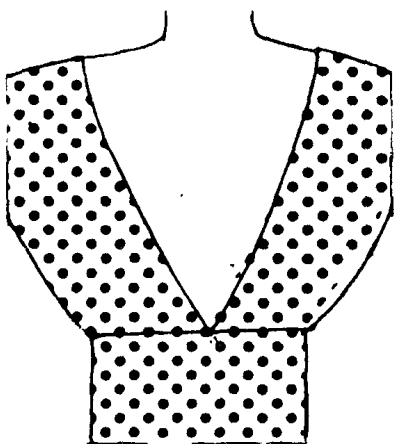
大V形领口



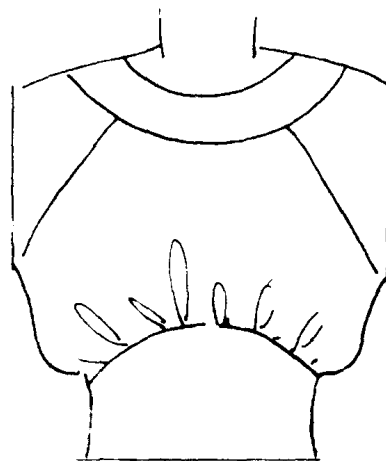
半露肩领口



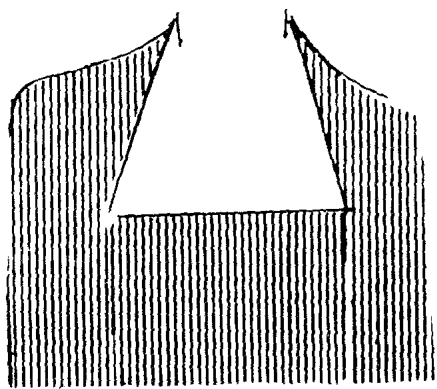
袒胸圆领口



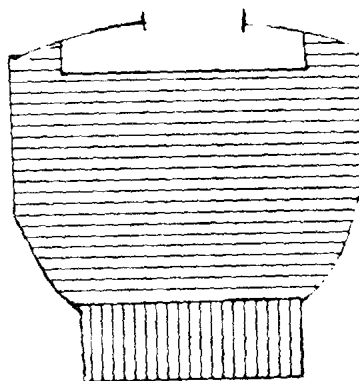
大V尖连平腰领口



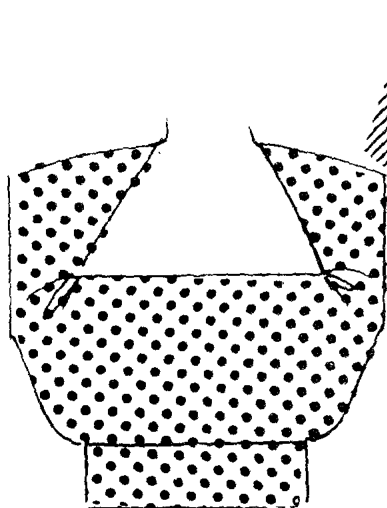
插肩双层圆领口



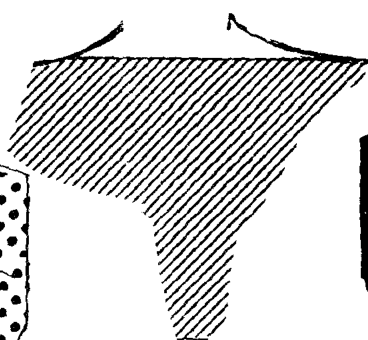
大梯形领口



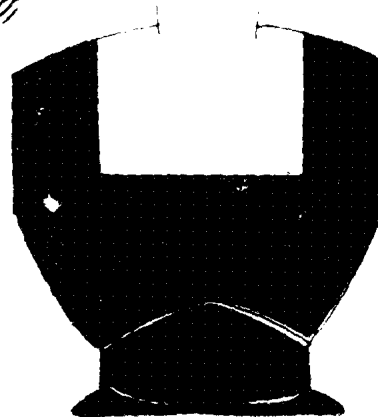
带肩长方形领口



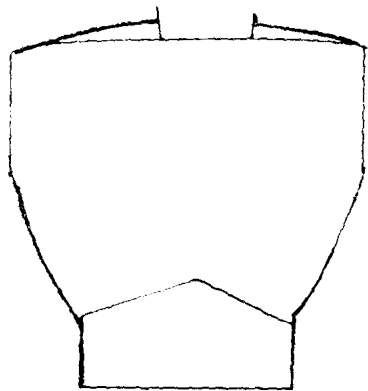
梯形角打皱领口



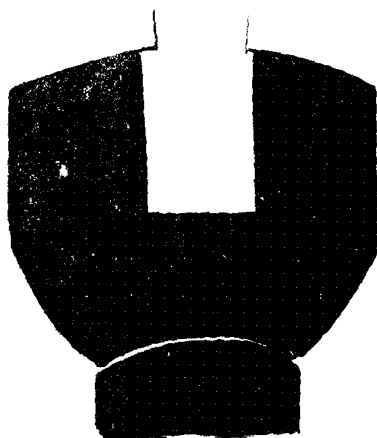
平肩领口



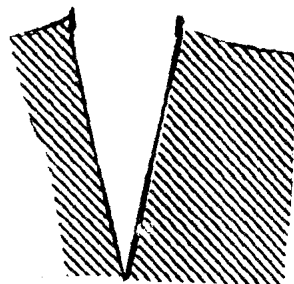
大方形领口



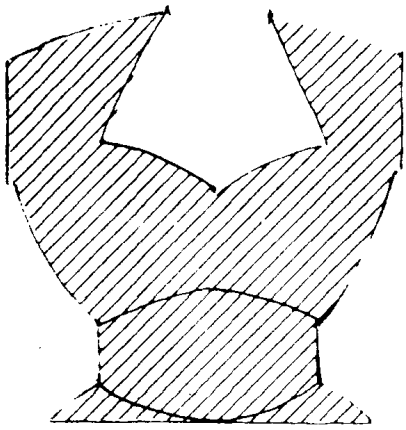
大一字领口



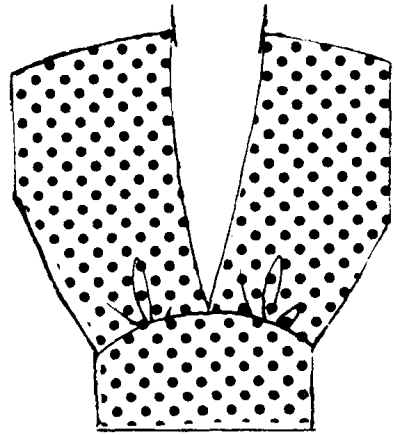
竖长形领口



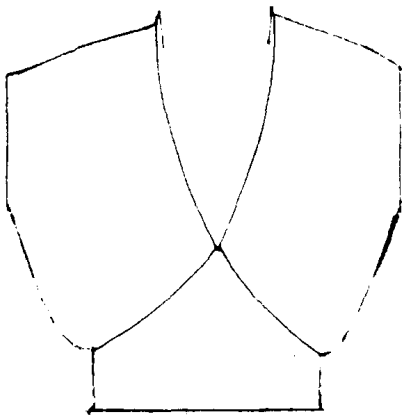
前开领口



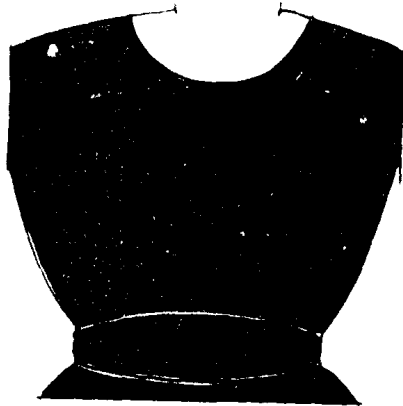
书形领口



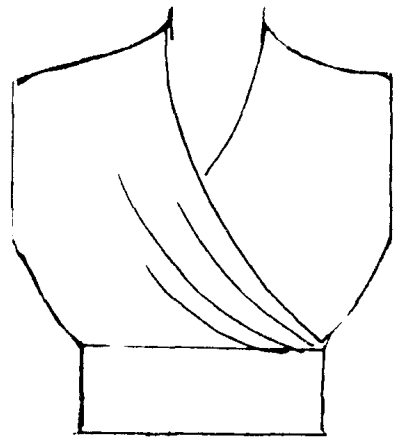
皱腰大V形领口



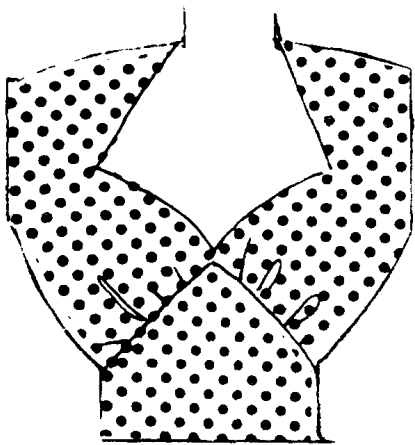
V尖连尖腰领口



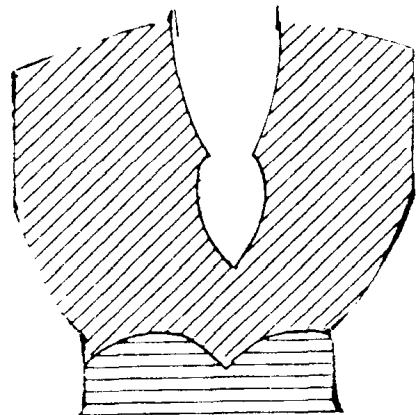
中圆领口



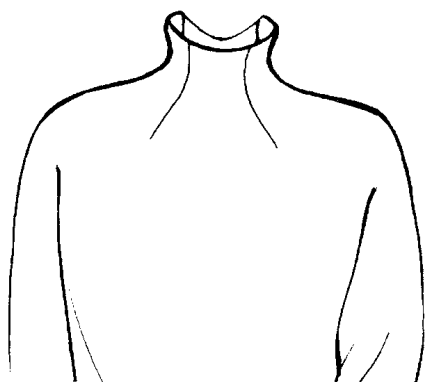
大搭襟打皱领口



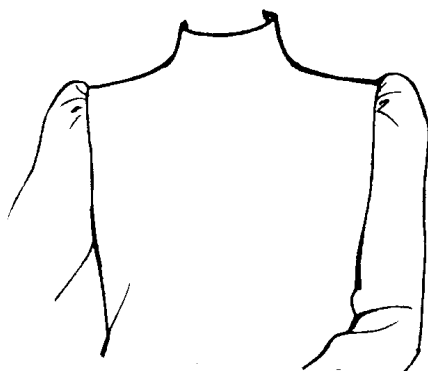
菱尖连皱腰领口



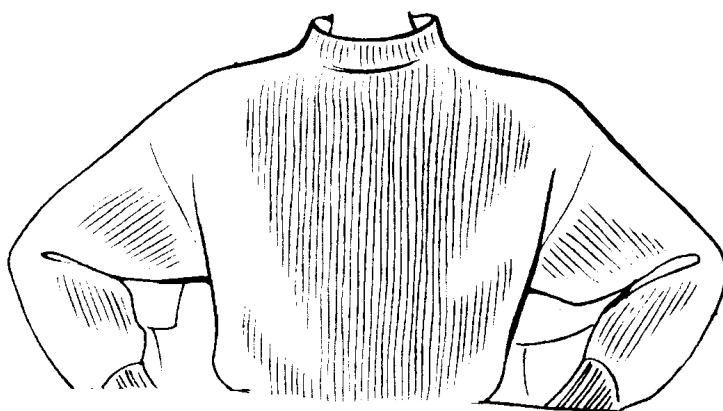
烛光形领口



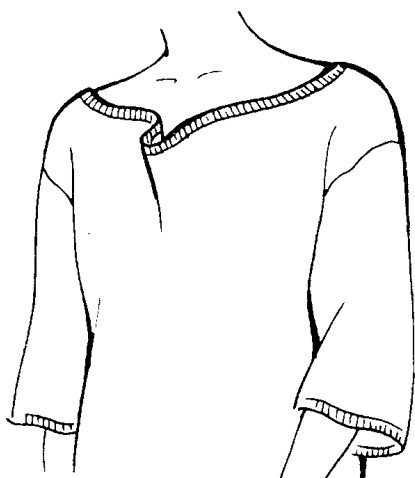
漏斗形领□



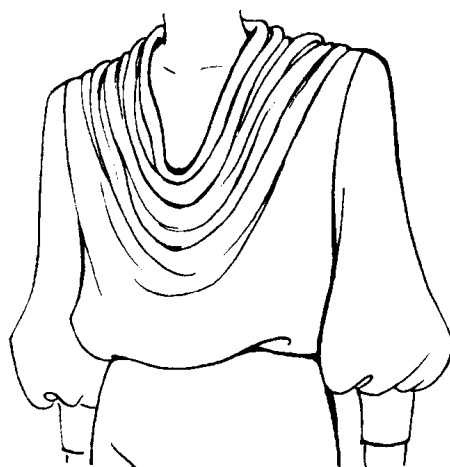
瓶形领□



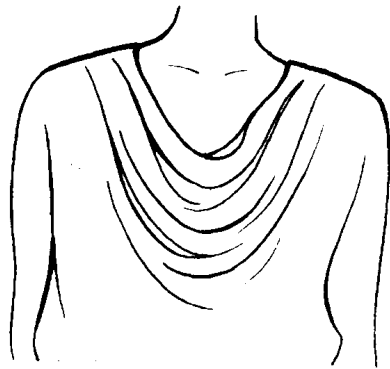
竖领□



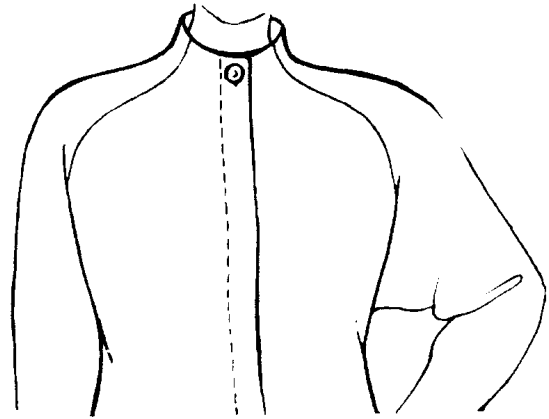
宽松大领□



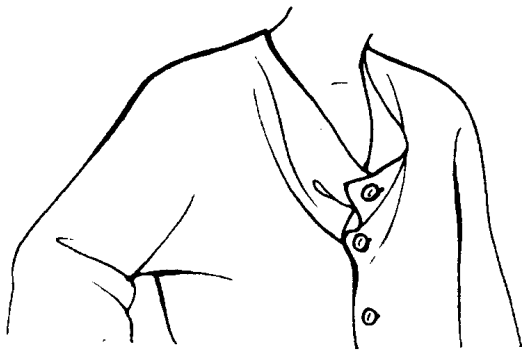
胸前悬皱领□



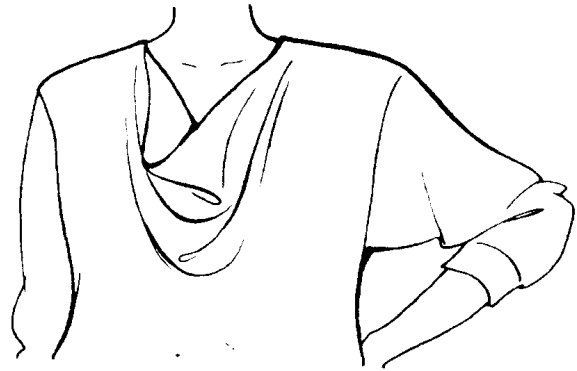
悬垂式领□



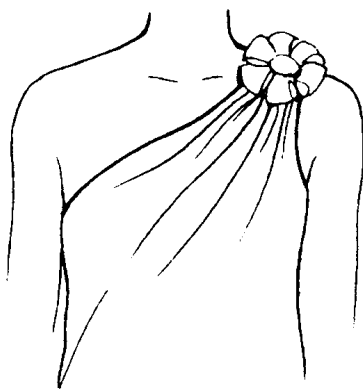
插肩前开襟瓶形领□



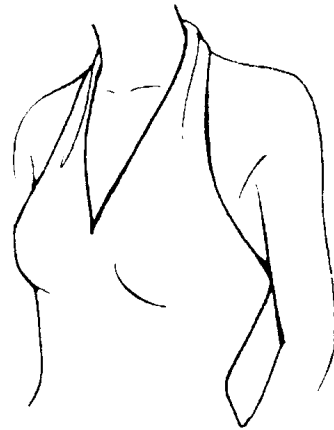
下垂开襟领□



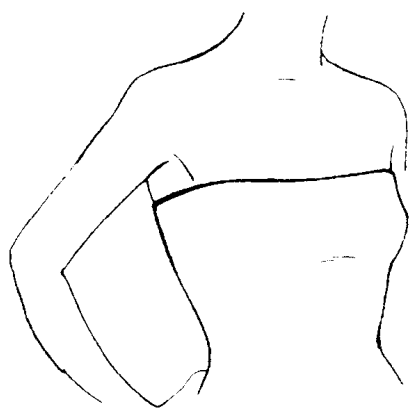
下垂圆领□



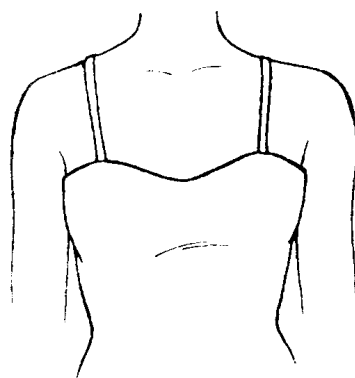
单肩皱折花饰领□



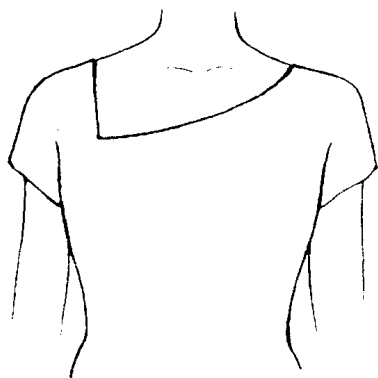
全露肩背三角背心领□



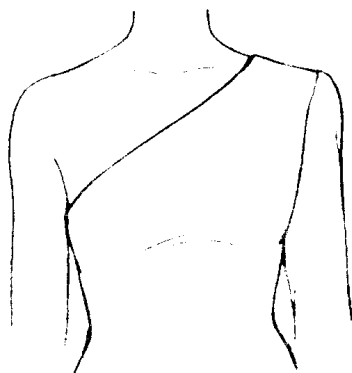
晚礼服领□



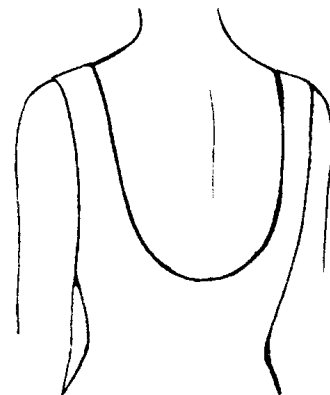
背带式半胸领□



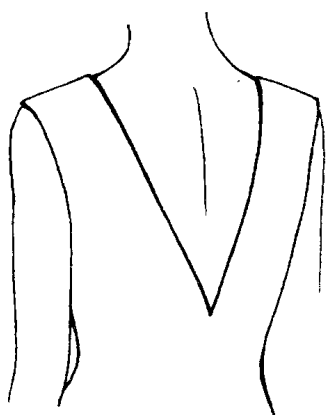
斜圈领□



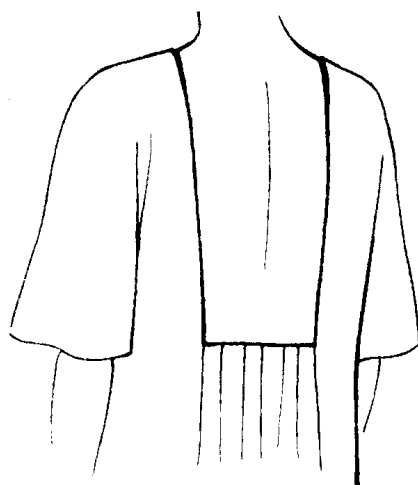
单肩斜领□



圆后领□

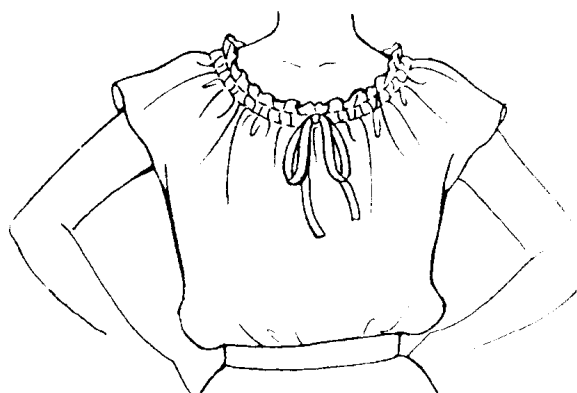


V形后领□

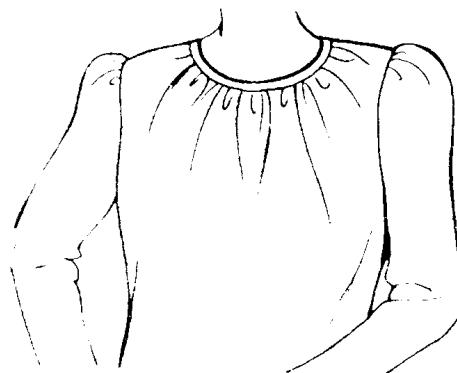


长方形后领□



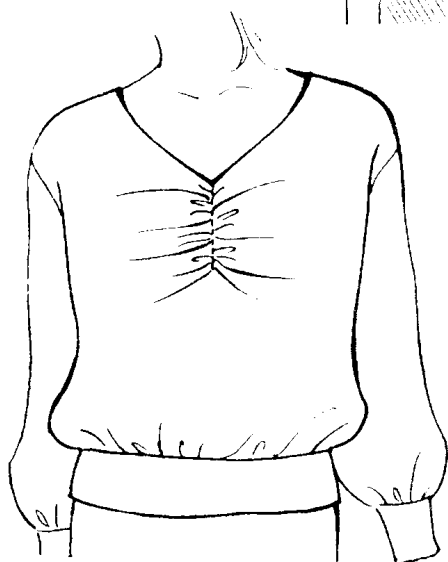
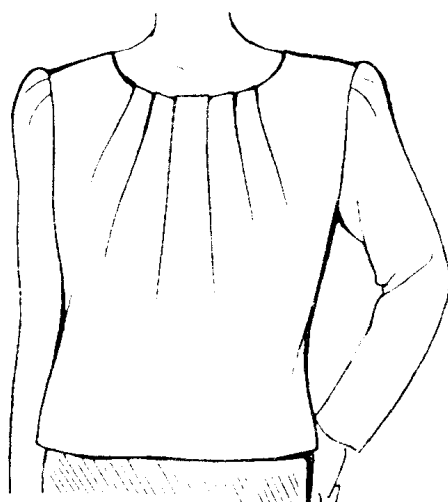


束带领□

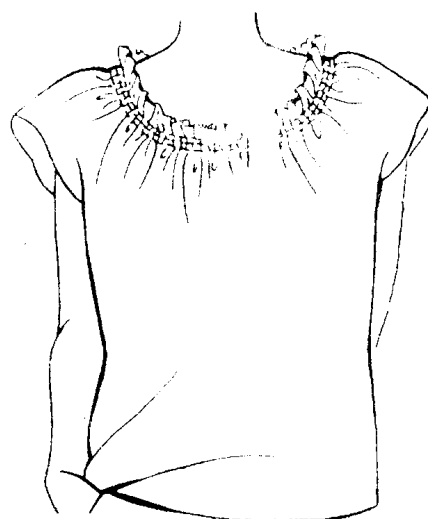


褶裥领□

打褶领□



胸抽皱尖心领□



多层抽褶领□