

全国公共英语等级考试丛书

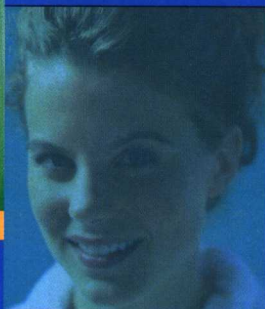
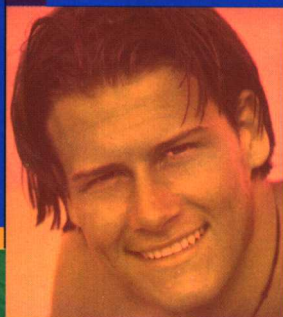
PETS

# 全国公共英语

## 等级考试题集精解

## 第三级

李红云 和 强 主编  
殷 红 编著



新时代出版社

全国公共英语等级考试丛书

# 全国公共英语等级 考试题集精解

李红云 和 强 主编  
殷 红 编著

新 时 代 出 版 社

·北京·

## 图书在版编目(CIP)数据

全国公共英语等级考试题集精解. 第三级/李红云,  
和强主编. —北京:新时代出版社, 2002. 1

(全国公共英语等级考试丛书)

ISBN 7-5042-0603-2

I. 全… II. ①李…②和… III. 英语—水平考试  
—试题 IV. H310.42-44

中国版本图书馆 CIP 数据核字(2001)第 22666 号

新时代出版社出版发行

(北京市海淀区紫竹院南路 23 号)

邮政编码 100044

北京奥隆印刷厂印刷

新华书店经售

\*

开本 850×1168 1/32 印张 9 235 千字

2002 年 1 月第 1 版 2002 年 1 月北京第 1 次印刷

印数:1—4000 册 定价:13.00 元

---

(本书如有印装错误,我社负责调换)

# 前言

全国公共英语等级考试体系(PETS)是教育部考试中心为统一外语测试标准而新近在全国推广的一种考试体系。它由教育部考试中心主办,是在英国国际发展部(DFID)和英国剑桥大学地方考试委员会(UCLES)的协作下完成的。它是面向社会的、开放的、非学历性英语等级考试,将逐步取代现有的自学考试中的公共英语考试、公派出国留学人员英语水平考试等各类考试。

为帮助广大考生及时、深入地了解这一重要的新型考试体系,我们严格依据教育部考试中心最新制定的考试大纲编写了本书。

根据考试大纲,第三级在PETS考试中属中间级,其标准相当于我国学生普通高中毕业后在大专院校又学习了2年公共英语或自学了同等程度英语课程的水平。该级考生一般为企事业单位的行政秘书、经理助理、一般管理人员或科技工作者、外企职员等。

PETS第三级考试由笔试(120分钟,满分100分)和口试(10分钟,满分5分)两种独立的考试组成。笔试包括听力、英语知识运用、阅读理解 and 写作四部分。

本书严格遵照考试大纲在题型、词汇等诸方面的要求进行编写,力求试题难度适中,突出考查重点,反映考试趋势。本书共包括8套PETS第三级模拟试题。为方便读者自学,在每套题的后面均给出试题答案及难点、重点的注释和题解,以供参考。

#### IV

希望本书的出版能对广大应试者通过考试有所裨益。

囿于编者水平、时间所限,书中定会有不妥之处甚至错误,欢迎读者不吝指正,以便再版时修订。

本书配有听力部分磁带。

作 者

## 内 容 简 介

本书严格按照《全国公共英语等级考试大纲》在题型、词汇等诸方面的要求编写,难易程度适中,突出考查重点,反映考试趋势。本书共包括 8 套 PETS 第三级模拟试题。为方便读者自学,在每套题的后面均给出试题答案及难点、重点的注释与题解,以供参考。本书配有听力部分磁带。

# 目 录

试题 1 .....	1
答案 .....	23
题解 .....	25
试题 2 .....	28
答案 .....	50
题解 .....	52
试题 3 .....	55
答案 .....	77
题解 .....	79
试题 4 .....	82
答案 .....	103
题解 .....	105
试题 5 .....	109
答案 .....	129
题解 .....	131
试题 6 .....	134
答案 .....	154
题解 .....	156
试题 7 .....	159
答案 .....	179
题解 .....	181
试题 8 .....	185
答案 .....	205
题解 .....	207
各套试题听力部分录音稿 .....	210
附录 1 PETS 第三级考试级别标准 .....	268
附录 2 PETS 第三级考试的形式、 内容与结构 .....	272

# 试 题 1

## Section I Listening Comprehension

(25 minutes)

### Directions:

*This section is designed to test your ability to understand spoken English . You will hear a selection of recorded materials and you must answer the questions that accompany them . There are two parts in this section , Part A and Part B .*

*Remember , while you are doing the test , you should first put down your answers in your test booklet . At the end of the listening comprehension section , you will have 3 minutes to transfer your answers from your test booklet onto your ANSWER SHEET 1 .*

*If you have any questions , you may raise your hand NOW as you will not be allowed to speak once the test is started .*

*Now look at Part A in your test booklet .*

### Part A

*You will hear 10 short dialogues . For each dialogue , there is one question and four possible answers . Choose the correct answer — A , B , C or D , and mark it in your test booklet . You will have 15 seconds to answer the question and you will hear each dia-*

logue **ONLY ONCE**.

**Example:**

You will hear:

**W:** Could you please tell me if the Beijing flight will be arriving on time?

**M:** Yes, Madam. It should be arriving in about ten minutes.

You will read:

Who do you think the woman is talking to?

[A] A bus conductor.

[B] A clerk at the airport.

[C] A taxi driver.

[D] A clerk at the station.

From the dialogue, we know that only a clerk at the airport is most likely to know the arrival time of a flight, so you should choose answer [B] and mark it in your test booklet.

Sample Answer: [A] ☒ [C] ☐ [D] ☐

Now look at question 1.

1. Where does this conversation probably take place?

[A] On a campus.

[B] In a shop.

[C] At the man's home.

[D] At a fashion show.

2. Why does the man want to change his job?

[A] He wants to leave his present company.

[B] He does not like the present boss.

[C] He wants to improve himself in a large company.

[D] He wants to earn more money.

3. Which bus goes directly to the Friendship Hotel?

[A] No. 9 bus.

[B] No. 7 bus.

[C] No. 5 bus.

[D] No. 4 bus.

4. Which instruction is not given by the doctor?

[A] Take deep breath.

[B] Show his tongue.

[C] Take syrup three times a day.

[D] Stay in bed.

5. Why does the woman suggest relaxing?

[A] Because they've been working hard at their jobs.

[B] Because they've been studying hard for some time.

[C] Because they long to see a play.

[D] Because they think that "Hamlet" is worth seeing.

6. What do you think the woman is doing?

[A] She's inviting some friends for dinner.

[B] She's giving a speech at a gathering.

[C] She's treating her patients.

[D] She's cooking for her children.

7. What does the man mean?

[A] Concert tickets can be booked now.

[B] The tickets for the Symphony Orchestra have been sold

out.

[C] People can buy tickets for the performance on Saturday.

[D] They still have a few tickets for the performance on Sunday.

8. What is the probable relationship between the two people?

[A] Waitress and customer.

[B] Doctor and patient.

[C] lawyer and client.

[D] Professor and assistant.

9. How does the man feel?

[A] Disappointed.

[B] Exciting.

[C] Funny.

[D] Relieved.

10. How much should the man pay for the overdue book per day?

[A] 6 cents.

[B] 10 cents.

[C] 16 cents.

[D] 60 cents.

## Part B

*You are going to hear some passages and conversation. Before listening to each, you will have 5 seconds to read each of the questions which accompany it. After listening, you will have time to answer each question by choosing A, B, C or D. You will hear*

*each recording ONLY ONCE . Mark your answer in your test booklet .*

*Questions 11—13 are based on the following monologue .*

11. What is the main idea of this monologue?

- [A] Parents influence us most and a good relation with them is important to us.
- [B] Some people may have greater influence on us than our parents.
- [C] We should not depend on our parents.
- [D] Parents like to show us how to live.

12. All of the following statements are true except

- [A] no university offers degrees in parenting.
- [B] parents can learn parenting in some schools.
- [C] parents provide their children with unlimited fortune by treating them with love, kindness, and understanding.
- [D] forgive your parents when they are wrong.

13. What is the tone of this monologue?

- [A] Sarcastic.
- [B] Instructive.
- [C] Angry.
- [D] Pleasant.

*Questions 14—17 are based on the following dialogue .*

14. What are the two speakers talking about?

- [A] How to name people.
- [B] How to remember someone's name.

- [C] How to make use of people in business.
- [D] How to make profits by running a restaurant.

15. Which of the following is false?

- [A] The skill of remembering someone's name can help you in business.
- [B] The skill of remembering someone's name can improve your personal relationship.
- [C] The skill of remembering someone's name can bring you more friends.
- [D] Some people's ability to remember names is perfect.

16. What is probably the man in the conversation?

- [A] A restaurateur.
- [B] A consultant.
- [C] A psychologist.
- [D] A wholesaler.

17. Which of the following is the tip that the man gives the woman?

- [A] Keep focused when someone introduces a person to you.
- [B] Dramatize names and faces with memorable images.
- [C] Transform a person's name into an unforgettable image.
- [D] Recite the name when you have time.

*Questions 18—21 are based on the following monologue.*

18. The househusband does all of the following in the morning except that

- [A] He goes out of the house very early in the morning.
  - [B] He gets his son ready for school.
  - [C] He makes his daughter's breakfast.
  - [D] He prepares his wife's lunch.
19. What time does his wife go to work everyday?
- [A] By 6:15 A.M.
  - [B] By 7:00 A.M.
  - [C] By 14:00 P.M.
  - [D] By 14:00 P.M.
20. Which statement about the househusband is true?
- [A] He tried to be a househusband four years ago.
  - [B] He was willing to be a househusband.
  - [C] He has been a househusband for almost four years,  
which he is not proud of.
  - [D] He has been a househusband for four years as planned.
21. What's the man's job before he became the househusband?
- [A] He was a music director and evening announcer at a  
radio station.
  - [B] He was a manager at a TV station.
  - [C] He was a weather announcer at a TV station.
  - [D] He had been a househusband all the time.

*Questions 22—25 are based on the following passage.*

22. Which title will you choose for this passage?
- [A] A Warmer or a Colder Earth?
  - [B] The Earth is Going to Be Warmer and Warmer.
  - [C] The Earth is Going to Be Colder and Colder?

[D] The Greenhouse Effect of the Earth

23. For how long has the globe been warming up?

[A] For the last century.

[B] For the last half century.

[C] For the last quarter of the century.

[D] For the last decade of this century.

24. Which of the following is true according to the passage?

[A] The average temperature rises by more than two degrees.

[B] The temperature rise starts the glacier melting in every part of the world.

[C] Nature seldom changes as swiftly as a rise of one degree per generation.

[D] The temperature of the Earth is determined by the amount of the Earth heat which the atmosphere can keep.

25. According to the speaker, what will our future be like?

[A] We are likely to live in the greenhouses.

[B] We are likely to find more fossil fuels.

[C] We are likely to make use of the world's resources of oil and coal.

[D] We are likely to move into a brighter and cleaner atomic energy age.

## Section II Use Of English

(15 minutes)

### Direction:

Read the following text. Choose the best word or phrase for each numbered blank and mark A, B, C or D on your ANSWER SHEET 1.

### Text

The queen of all 26 in the U.S. is talk-show host Oprah Winfrey. Her 27 goes beyond 28 into everything from the publishing business to the agricultural markets. When Winfrey discusses 29 author on her show, his book goes to the top of the best-seller charts. She starts a new exercise program, 30 her regimen. She discusses mad cow disease on her show, and American cattle markets 31.

At age nineteen, Winfrey got her broadcasting job. She was a reporter at radio station WVOL in Nashville. She moved to Baltimore in 1976 and after two years 32a reporter and co-anchor, she 33 the station's talk show, *People Are Talking*. Viewers 34 very well to her. In 1984, Winfrey 35 a job as host of A.M. Chicago, a morning show. She had reason to be nervous: the program 37 opposite Phil Donahue's top-rated national talk show. It turned out that her worries were 37. Within months, Winfrey's A.M. Chicago was 38 its rival.

39 her success, Winfrey has had an 40 battle with her weight. After 41 around hundred pounds from 1984 to 1987, the five-foot-seven hostess lost sixty-seven pounds 42 a liquid diet and 43 her thin figure in 1989. The books of her 44 Rosie Daley and her 45 trainer Bob Greene became bestsellers.

26. [A] intermediary [B] intermediate  
[C] media [D] newspaper
27. [A] effect [B] affect  
[C] impact [D] influence
28. [A] her daily one-hour show [B] daily her one-hour show  
[C] her one-hour daily show [D] her one-hour show daily
29. [A] a known [B] an unknown  
[C] knowing [D] to know
30. [A] but thousands of people adopt  
[B] and thousands of people adopt  
[C] which thousands of people follow  
[D] making thousands of people to follow
31. [A] suffer [B] bear  
[C] put up with [D] endure
32. [A] worked as [B] working as  
[C] work like [D] working like
33. [A] was hired to host [B] hired to host  
[C] was hired hosting [D] hired hosting
34. [A] replied [B] reflected  
[C] evoked [D] responded
35. [A] nervous accepted [B] nervously accepted  
[C] nervous acceptable [D] nervously acceptably
36. [A] was rendered [B] was suffered  
[C] was scheduled [D] was restored
37. [A] unbelievable [B] unidentified  
[C] unfounded [D] undoubted
38. [A] fighting [B] beating  
[C] competing [D] striking
39. [A] In spite of [B] Despite of