

# 敦煌寶藏

黃永武博士 主編



新文豐出版公司印行

黃永武博士 主編

# 敦煌寶藏

第 112 冊

伯

2001

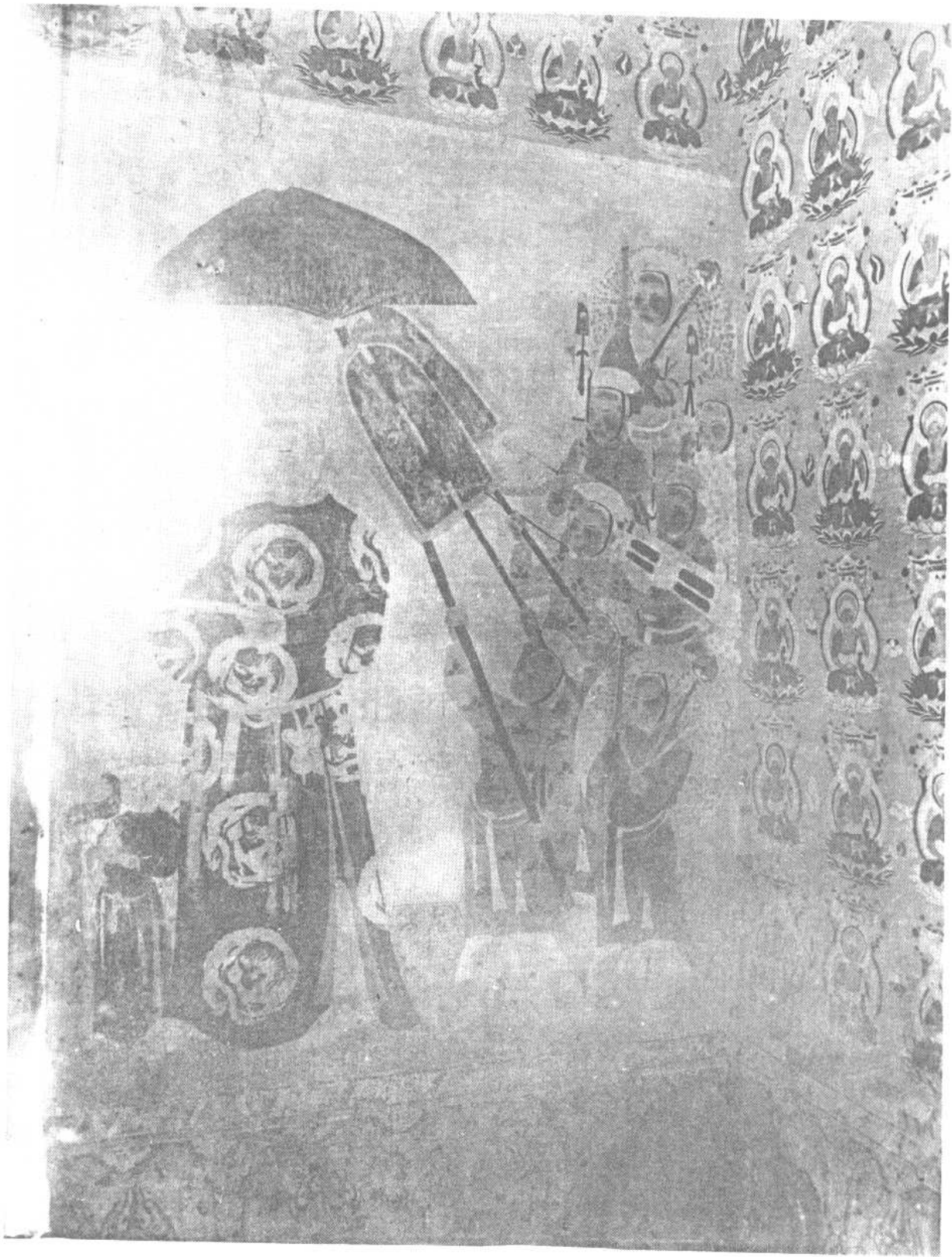
〈

2040

號



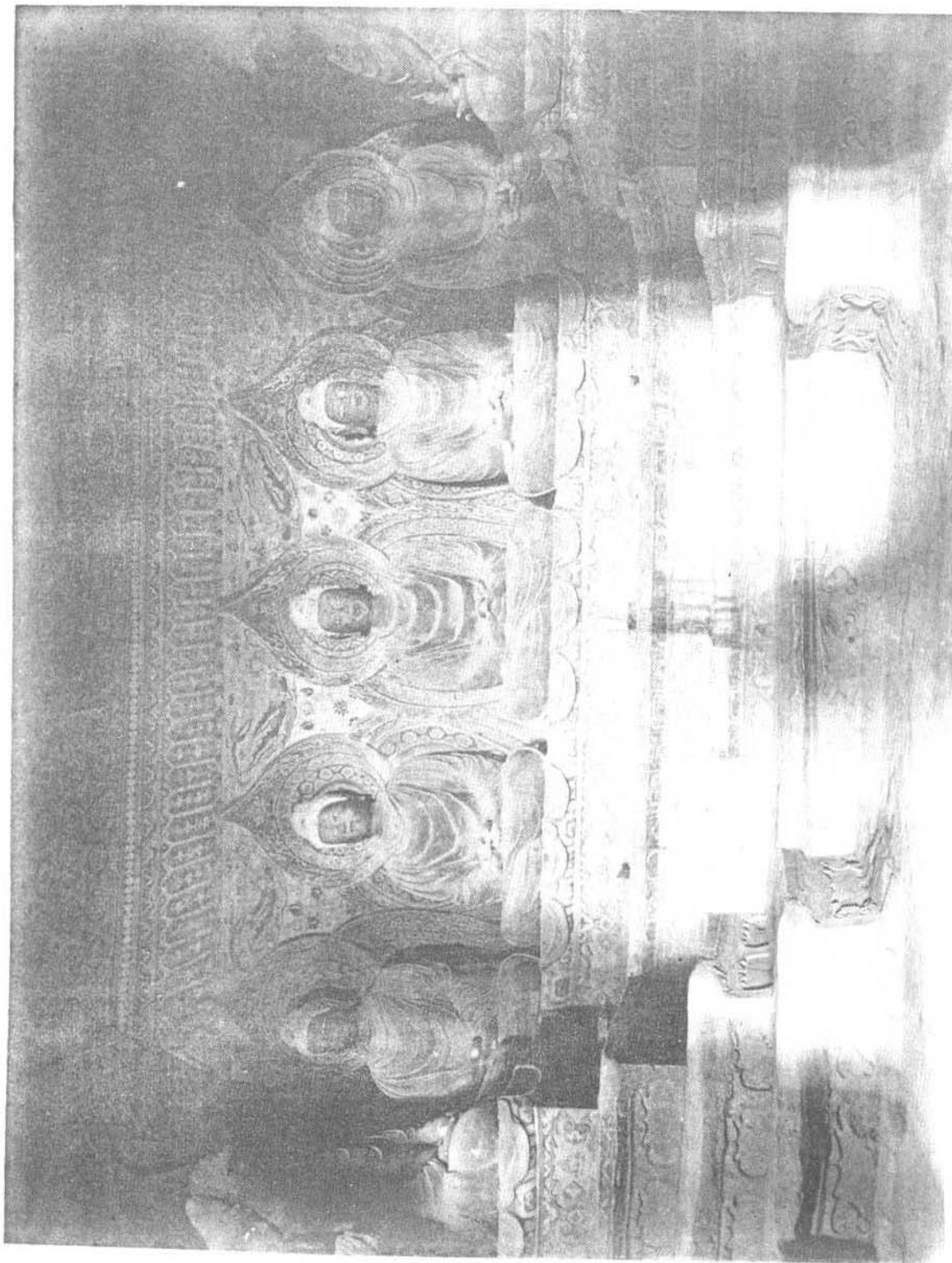
新文豐出版公司印行



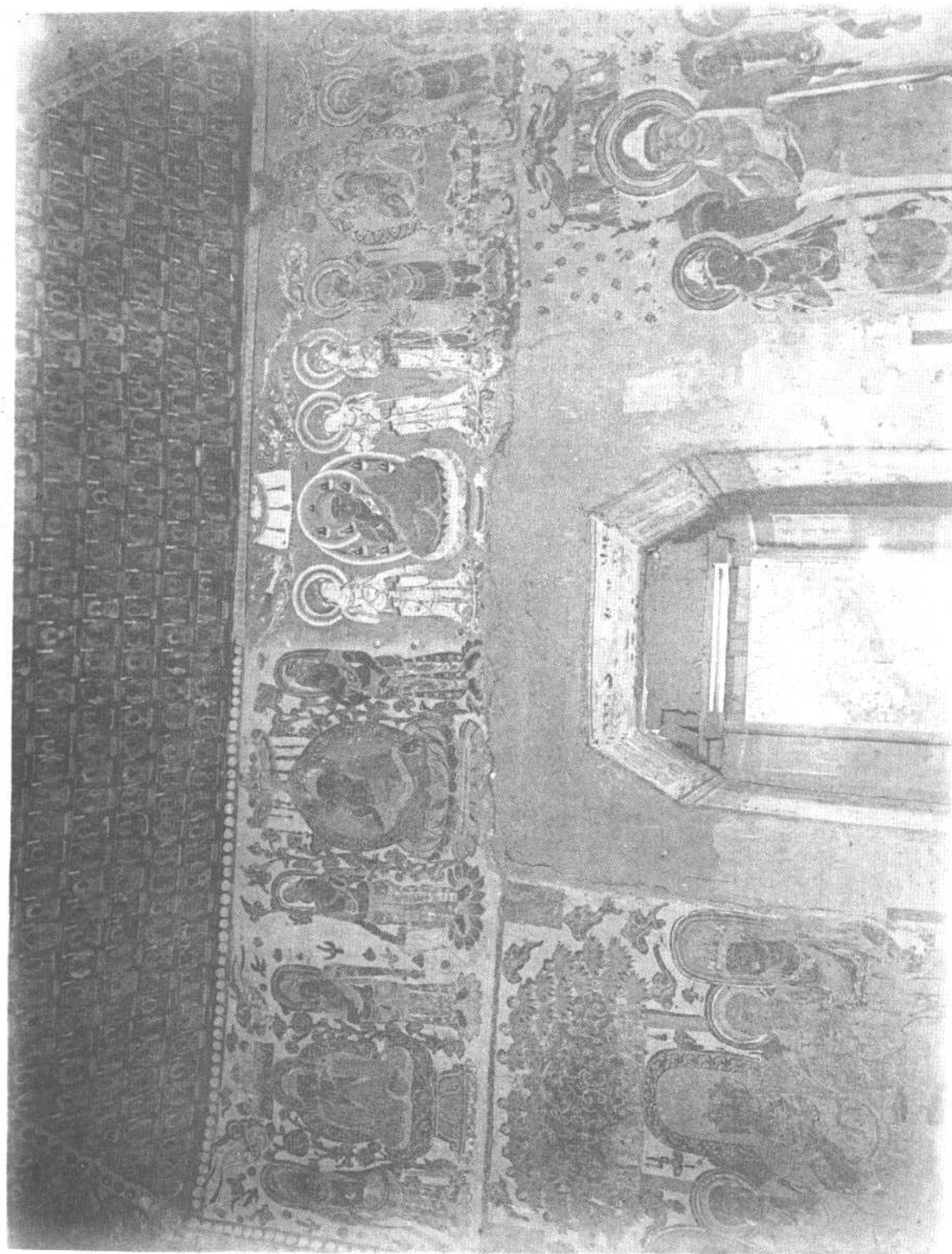
TOUEN-HOUANG — Grotte 140 A. Paroi avant de gauche.



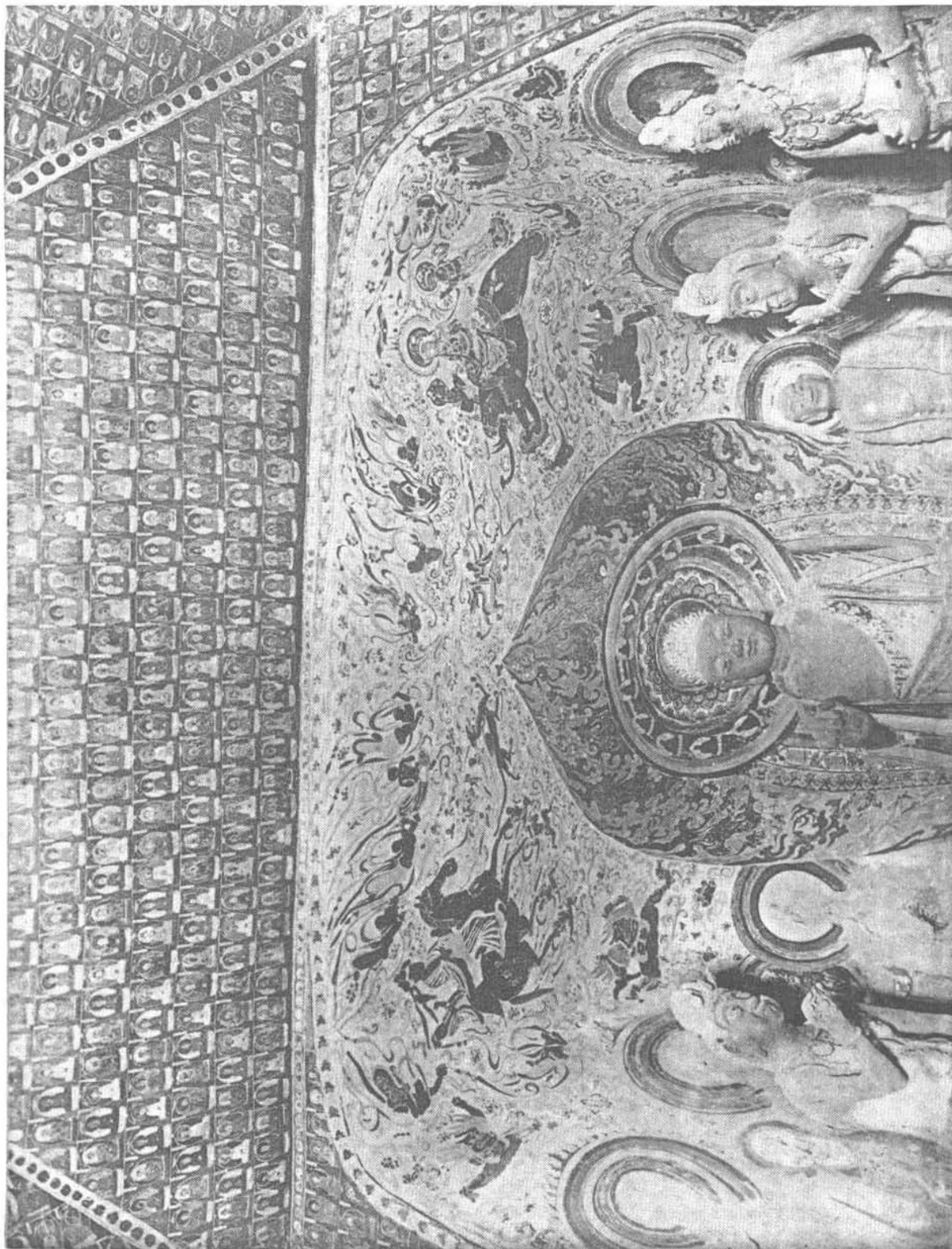
TOUEN-HOUANG — Grotte 140 A. Paroi avant de droite.



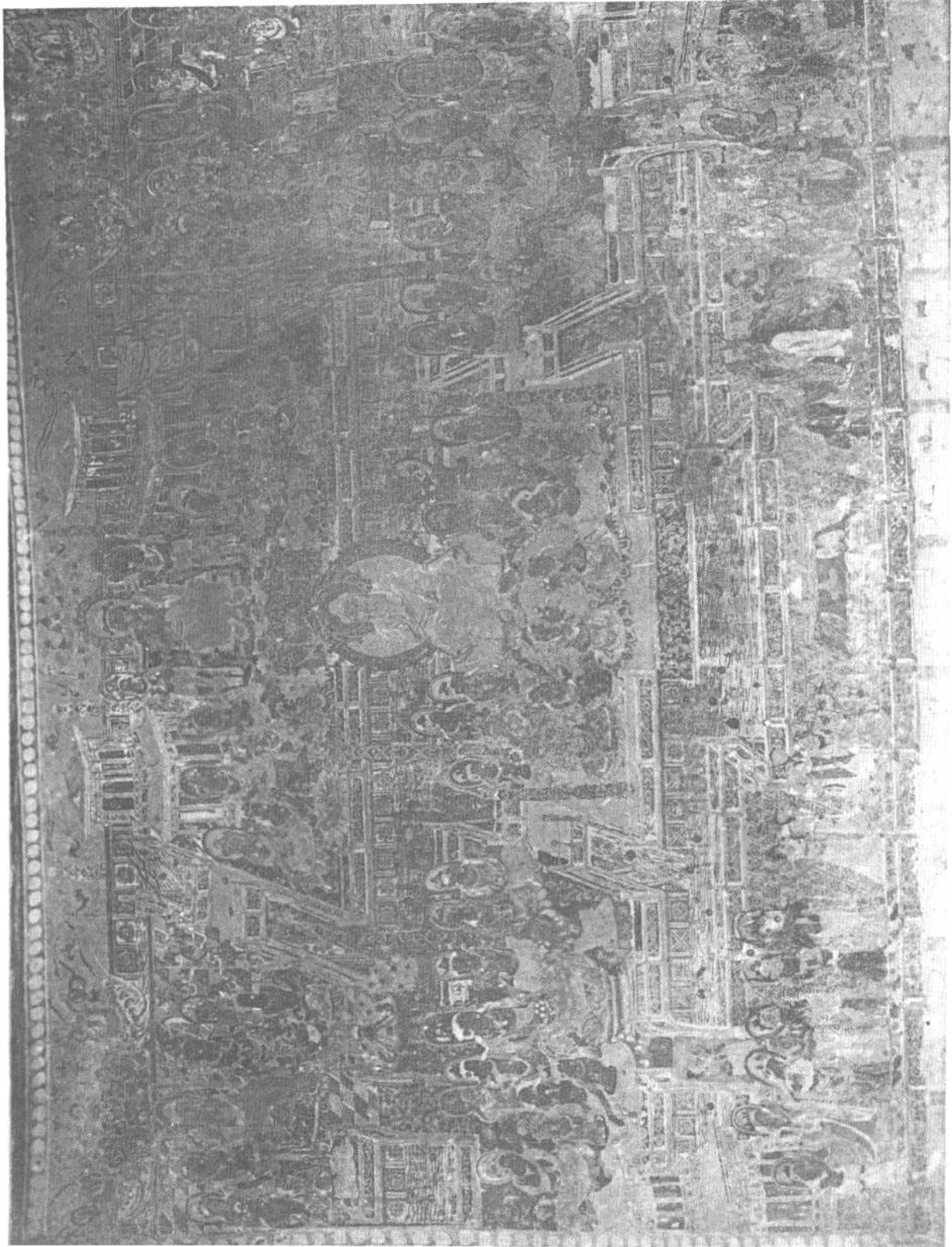
TOU EN-HOUANG — Grotto 142, Antel.



TOUEN-HOUANG — Grotte 144. Paroi avant, au-dessus de la porte.

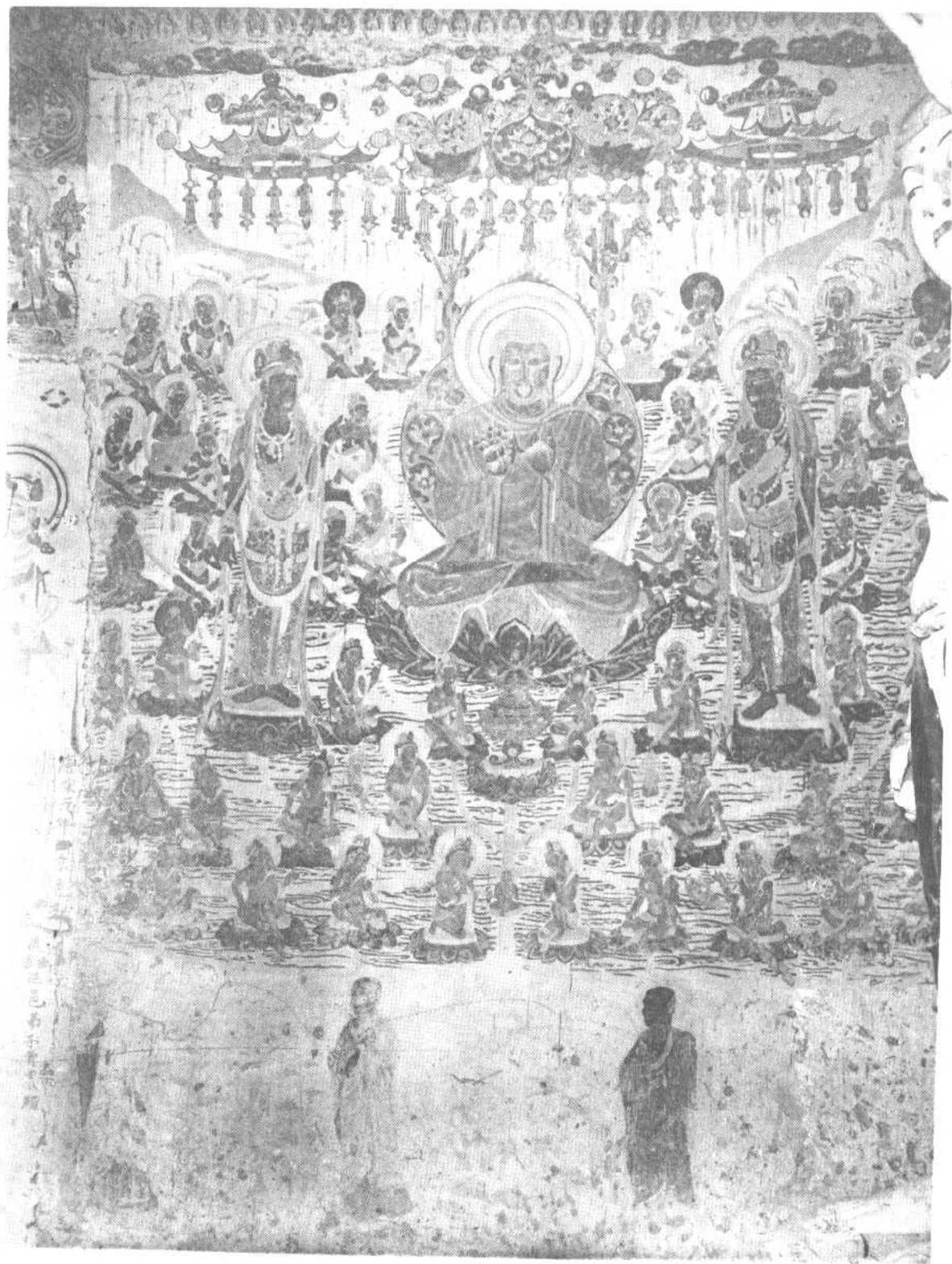


TOUEN-HOUANG — Grotte 144. Paroï du fond, au-dessus de l'autel.



TU EX-HOU ANG - Grotte 144, Paoi de droite.

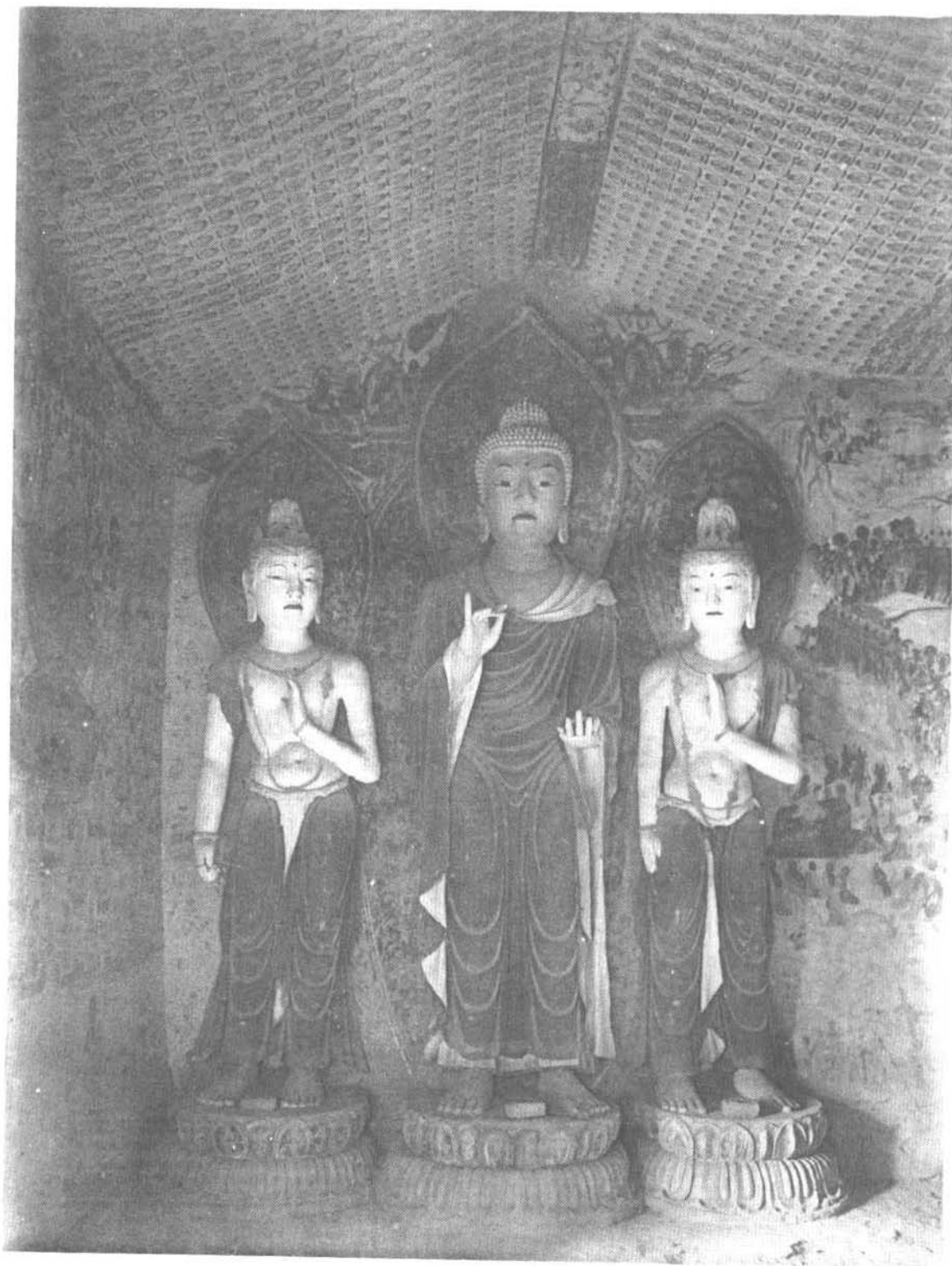




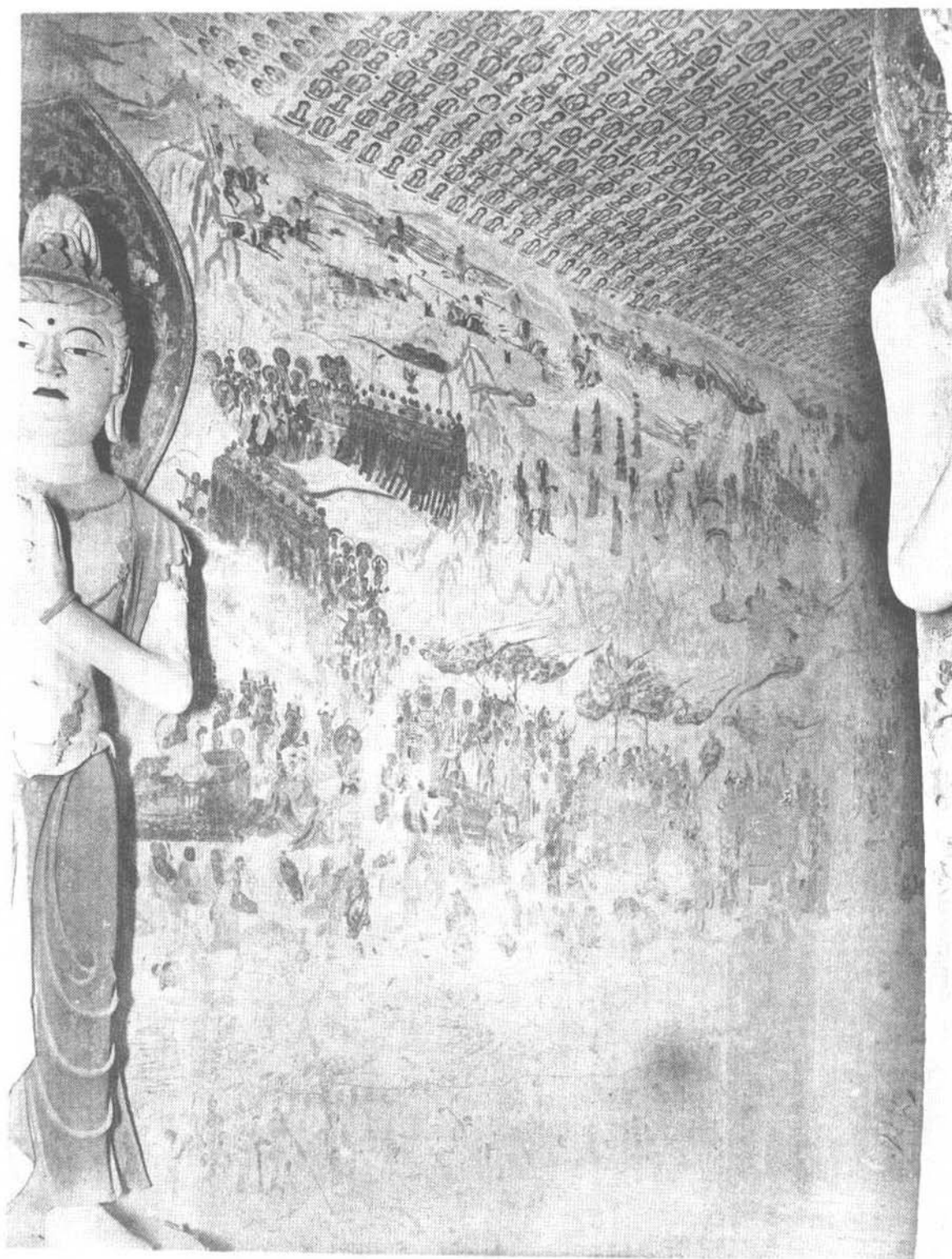
TOUEN-HOUANG — Grotte 146. Paroi avant de gauche.



TOUEN-HOUANG — Grotte 146. Paroi avant de droite.



美 1767 號

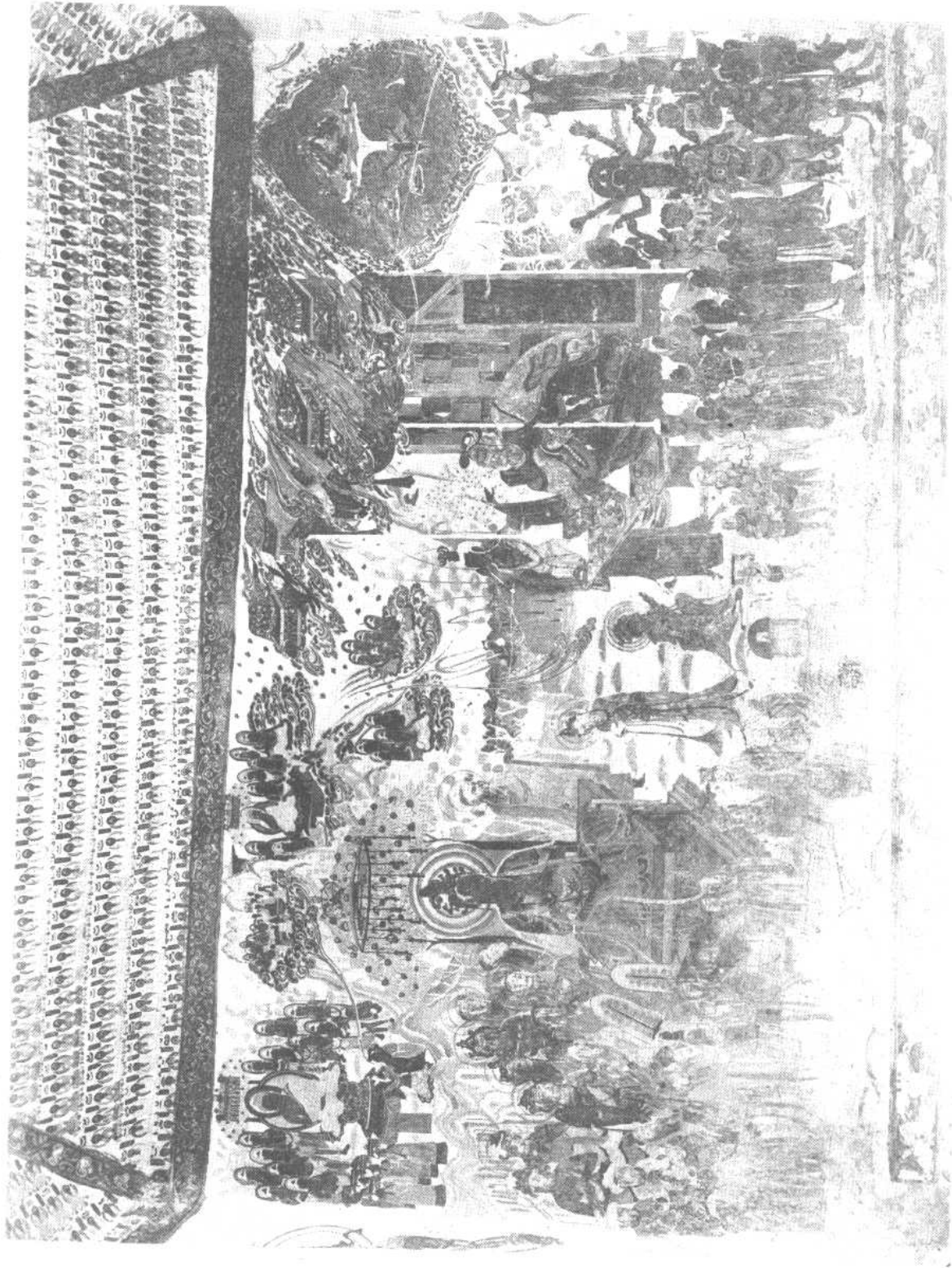


TOUEN-HOUANG. — Grotte 146. Paroi de gauche, partie arrière.

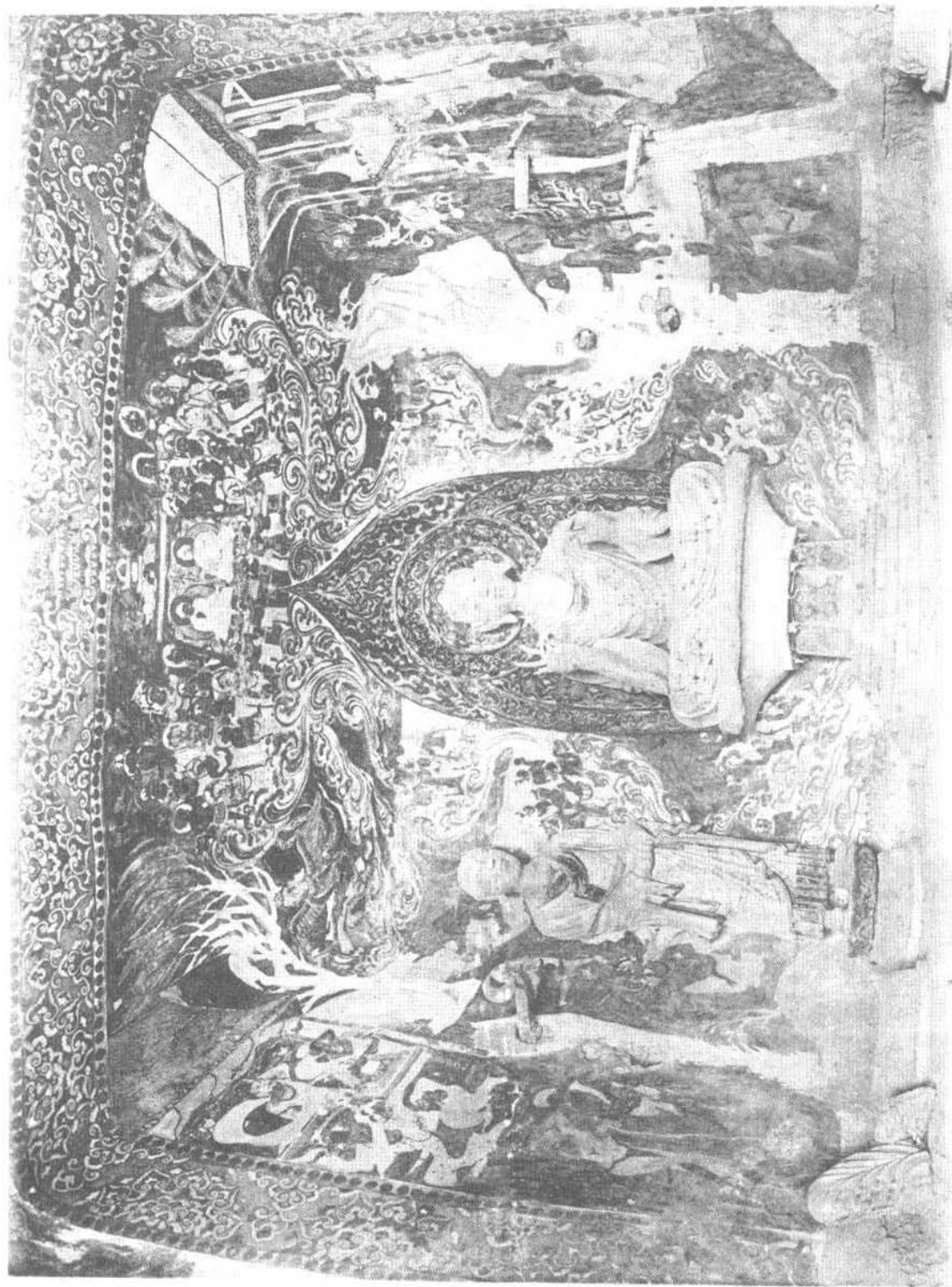


TOUEN-HOUANG. — Grotte 146. Autel central.



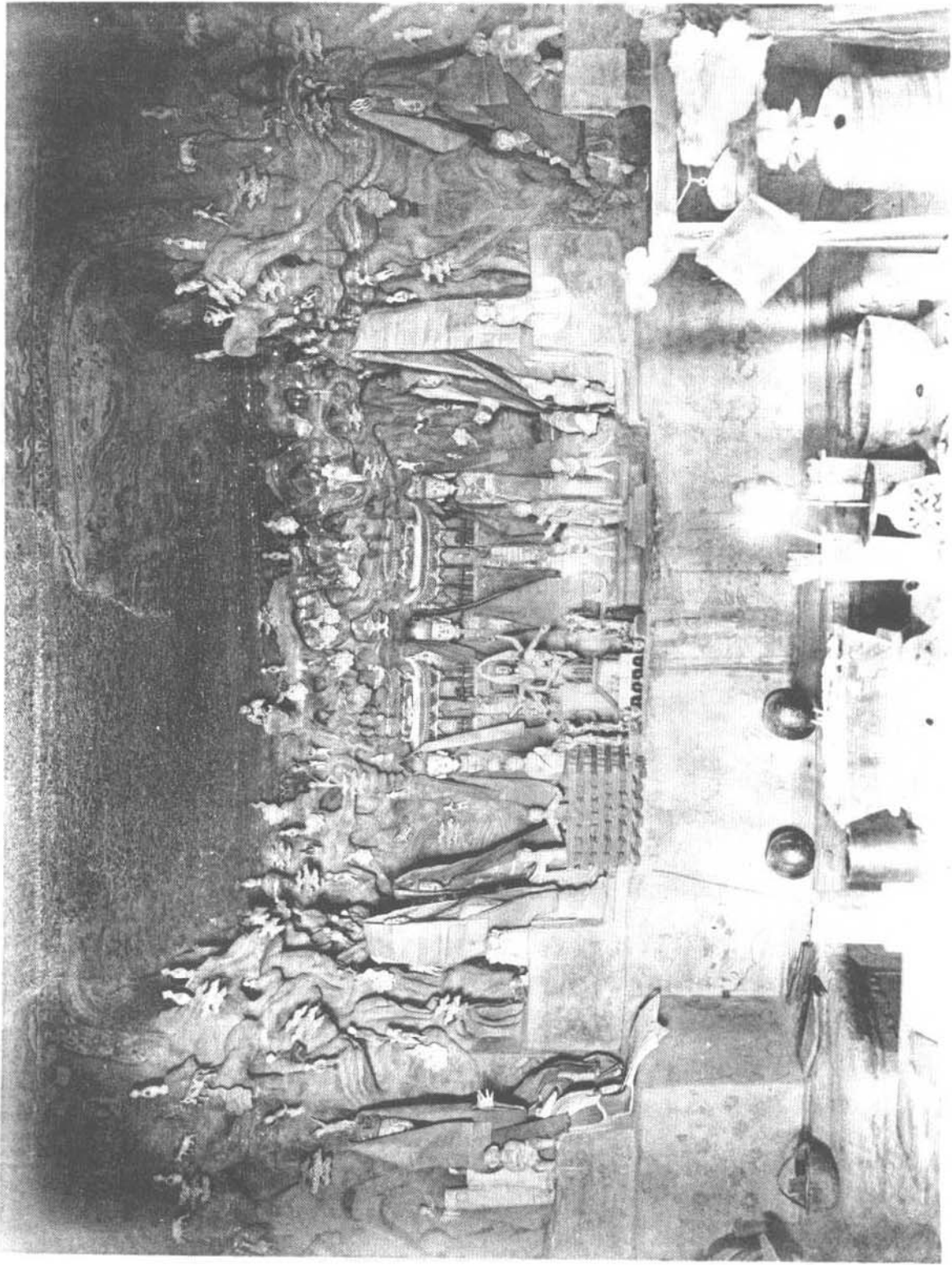


T'OUEN-HOUANG. Grande. 46. Parade de dieux.



TOUEN-HOUANG. — Grotte 140. Auel.





TOUEN-HOUANG — Grotte 150. Autre (detail).