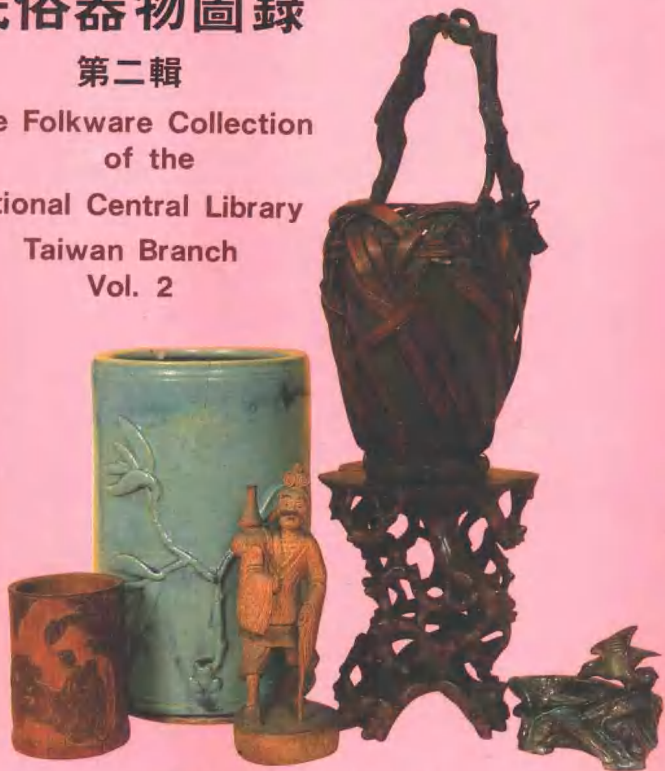


國立中央圖書館台灣分館珍藏

民俗器物圖錄

第二輯

The Folkware Collection
of the
National Central Library
Taiwan Branch
Vol. 2



國立中央圖書館台灣分館編印

國立中央圖書館台灣分館珍藏

民俗器物圖錄 第二輯

The Folkware Collection
of the
National Central Library
Taiwan Branch
Vol. 2



總字



0074551

中華民國七十三年六月國立中央圖書館台灣分館編印

Published by
the National Central Library's Taiwan Branch
June, 1984

版權所有・翻印必究

編輯者：國立中央圖書館台灣分館

台北市新生南路1段1號

電話：771-8528・721-8274

出版者：國立中央圖書館台灣分館

印刷者：益誠彩色印刷有限公司

重慶南路2段22巷14號

電話：3817017・3016615

中華民國七十三年六月編印

封面：書齋清供 怡清養性

Cover: A simple offering to your studio
That will bring tranquility.

序

中華文化，源遠流長，品質優美，中華民族，文明進步，守舊創新。中華文化是中華民族生存活動進化之成果。其本質乃倫理、民主、科學，能滿足中國人生存之目的，不同於其他國家文化，所以能長存於世，歷久彌新。

試觀本館所收藏之我國東南各省民間及旅居南洋僑胞生活上所習用之器物，因古人已逝，不能再得，保存至今，誠屬不易，係稀有之寶，應加珍惜；而所代表之歷史意義，文化淵源與藝術價值，用以研究古人、古事，其價值更無法估算。何況收藏之諸多器物，如神像，象徵宗教虔誠敬畏，使人正心誠意，慎言篤行。如家庭擺設，古色古香，典雅高貴，足供欣賞，能生樂趣，有助於提昇精神生活，在在均係良好之社會教育。

本館收藏之民俗器物，為數甚夥，且多屬精品，因其種類繁多，輪換陳列，僅可七八百件，參觀者祇能體會我國之歷史悠久與先民之睿智，對器物之歷史、文化、藝術之底蘊，則難能有所了解。本館有鑒及此，乃決定分年編印圖錄，一則使參觀者可窺全豹，以促進國人有深入認識，從而明瞭先民數千年生活之累積經驗，及文化發展之過程，增加中華民族之自尊與自信；一則有助於研究本館特藏東南亞資料者利用實物與文獻相印證，則研究結論，必更落實。至於本圖錄可供國內日益蓬勃之手工藝界與雅好陶藝人士之取法，猶其餘事。

本輯選刊器物圖，凡一百八十幅，編排次序，仍照第一輯成例，惟於篇首增加「民俗器物圖錄第二輯簡介」一則，俾開卷即可知內容梗概，以副厚愛本圖錄者之雅望。

編印本輯，攝影、製版、撰寫圖說、文字英譯，編排諸端，至為綦繁，致費時經年，始克歲事。本輯編務，仍由本館推廣服務組主任章以鼎先生全力為之，衷心至感。編輯黃文新先生從旁協助，國立歷史博物館黃永川先生泰之棣先生及費凱玲小姐，利用公餘，完成文字英譯，均極辛勞，謹此一併致謝。

本輯匆促付印，錯誤難免，尚祈博雅君子，不吝指正。

劉昌博謹序
中華民國七十三年六月於
國立中央圖書館台灣分館

PREFACE

Chinese culture had its beginnings in years long past, which then eventually developed into something exquisitely beautiful. The Chinese people with these advances in civilization were able to preserve the ways of the ancients while embracing the new. Chinese culture is the fruit of our people's attempts to survive and develop: its intrinsic nature, along with its moral principles, democratic ideals, scientific accomplishments, and bountiful resources were sufficient to ensure the survival of the Chinese people. Because China's culture is unique in this way among all the world's civilizations, it has continued to flourish even to today.

Just a glimpse at the Library's collection of articles used by our people in China's southern and eastern provinces, as well as the items that belonged to the Chinese living in Southeast Asia, gives us an idea of what our history really means, the sources of our culture, and the value of our art. And in the study of how our people lived and what they did so long ago, the value of these items is inestimable. This is not to mention such objects in our collection as the deity figures. These religious visages inspire respect and fear, leading those who gaze on them to lead more upright lives and to be more cautious in words and actions. The mellowed color and fragrance of these figures are elegantly precious, sufficient in themselves to warrant our respect and delight. These qualities, of course, also serve to enhance our minds and to bring about better education in our society.

The National Central Library Taiwan Branch Library has a very large collection of folk art and utensils, and a number of these are truly exquisite. Because of the broad range of this collection, they are displayed in a rotation of 700 to 800 pieces at a time. These artworks and utensils provide viewers with a grasp of the extreme length of our nation's history and give viewers an understanding of what our history, culture, and art are really like. It was due to this that the Library decided to edit a series of catalogs on our collection over the years, so that viewers may obtain a better understanding and appreciation of our collection. From this collection we are able to realize how our people lived thousands of years ago and how our culture was passed down through the centuries. It also serves to enhance the pride and self-respect of the Chinese people.

In this collection, 180 pictures are presented in the same order as Volume 1. We have prepared this second volume so that many other people can enjoy the Library's collection, as well as in response to the requests of those who were pleased with the first volume.

The preparation of this book involved the time and dedication of many people. The editing work was conducted under the direction of Library Promotion Department Head Mr. Chang I-ting, and Mr. Huang Wen-hsin provided him with his valuable assistance; I would like to offer them both my sincerest thanks. I would also like to express my gratitude to the National Museum of History's Mr. Huang Yung-chuan, Mr. Ch'in Chi-ti, and Ms. Carolyn Phillips for their help in translating this volume into English.

We hope that you will enjoy this volume, and look forward to hearing your comments and criticisms.

Liu Ch'ang-po, Director
National Central Library Taiwan
Branch Library
June 1984

民俗器物圖錄第二輯簡介

- 一、本輯選刊器物圖計一八〇幅，其編排順序仍按第一輯例，首食器，次服飾、居室擺設用器、一般用器、宗教法器、仙佛神像、石灣陶塑人物等七大類。
- 二、每一器物之說明，首述製作年代，次及產地、品質、花式、品名、大小、高寬等項，或無法可考者，則予省略。每一器物說明文字，均採中英文對照，藉廣流傳。
- 三、本輯所錄器物，年代最早者為六朝（公元二二九—五八九年）時白玉帶鉤，最近者為崔國雄石灣陶塑。其中較罕見之物，有元銅權，明仿磁州窯獅蓋罐，清竹雕山水詩文扁壺，竹製水煙袋，銅製七巧盒，同治年銀票印模，素胎豬形陶撲滿等，精巧樸拙，兼而有之。
- 四、本輯所收早期石灣窯壁花插（亦稱壁掛），都二十八件，飛禽瓜果，花卉蟲魚，寓言故事，題材廣泛，百態雜陳，色彩鮮麗，用作壁飾，或盛水蒔花，賞心悅目，頗富雅趣。
- 五、本輯所收仙佛神像，計二十九圖三十五尊，均為明清舊時之物，雕塑技法，精湛傳神，尤以彩色媽祖暨侍女像、貼金真武大帝、靈寶天尊、道德天尊、元始天尊、張天師等，允稱佳構。
- 六、石灣陶塑，馳名中外，人物塑造，堪稱一絕，製作精緻，筋骨脈絡，膚紋毫髮，纖細無遺，神采奕奕，栩栩如生。崔國雄先生原籍廣東，幼師名家霍文厚習藝，多年鑽研，頗得真傳。故特選刊館藏崔氏近作十一件，旨在引起雅好陶藝人士之興趣，進而促使此種民間技藝，能繼嘉義交趾燒之後，得在復興基地台灣再放異彩。

An Introduction to the Folkware Collection,

Volume II

1. In this volume, the illustrations of our Chinese folkware collection total 180, and the order in which they appear is the same as in Volume I. There are seven categories in this book: food utensils, costume decorations, ordinary household wares or utensils, general implements, religious altar fittings, god figures, and Shih-wan ceramic ware.
2. The explanation of each item includes the period when it was made, the production location, its style, its special title, and its size. This also includes an English translation for Western readers.
3. The earliest item in this volume is a white jade belt hook from the Six Dynasties period (229 – 589), and the most contemporary are the Shih-wan ware items of the Republic period. Many items in this book, such as the Yuan bronze weight, the Ming Ts'u-chou ware, the bamboo waterpipe, and so on, are very rare with fine aesthetic qualities.
4. There are 28 illustrations of Shih-wan wall vases in this book, which are decorated with vividly colored birds, flowers, fish, insects, etc. They served as wall decorations as well as flower vases.
5. A total of 19 illustrations (39 figures) of Chinese folk deities from the Ming and Ch'ing dynasties are in this volume. Among them, such figures as the Goddess of the Sea (Matsu) with her female attendants, the Taoist God Chen-wu Ta-ti, and the deity Ling-pao T'ien-tsun, are excellent.
6. The Shih-wan figures were delicately made and won a high reputation both here and abroad. In this volume, eleven pieces by Ts'ui Kuo-hsiung have been selected. Mr. Ts'ui was a talented artist from Kwangtung, and he learned his art during his youth from a famous teacher. We are glad that his artworks, as well as the Chiao-chih ware of Chiayi, serve to glorify the Republic of China.

目次

序	I	50清石灣窯綠釉魚形壁花插	26
簡介	II	51清石灣窯藍釉獅形壁花插	26
目次	V	52清石灣窯彩釉竹蟹形壁花插	27
1 清末景德窯青花風景瓷碟	1	53清石灣窯彩釉魚簍蟹形壁花插	27
2 清末景德窯青花開片牙邊風景瓷碟	1	54清石灣窯綠釉菜瓜形壁花插	28
3 清末廣窯青花龍、鳳漢堡船員聯誼紀念瓷碟	2	55清石灣窯彩釉桃形壁花插	28
4 清銅胎畫琺瑯八角盤	2	56清石灣窯彩釉竹禽壁花插	29
5 清乾隆景德窯彩釉人物方瓶	3	57清石灣窯彩釉寶瓶形壁花插	29
6 明成化青花人物瓷瓶	3	58清石灣窯彩釉寶瓶形壁花插	30
7 清銅胎畫琺瑯人物構圓盤	4	59清石灣窯彩釉寶瓶形壁花插	30
8 清銅胎畫琺瑯人物八角長形盤	4	60清石灣窯彩釉伊索寓言言狐鴉壁花插	31
9 清銅胎畫琺瑯壽字把壺	5	61清石灣窯彩釉武松打虎壁花插	31
10 清雕竹山水、人物詩文扁壺	6	62明仿磁州窯白底黑花獅蓋罐	32
11 清雕竹山水、人物詩文扁壺	6	63清石灣窯石榴紅釉乳獅	33
12 清宜興紫砂四耳陶扁壺	7	64清石灣窯彩釉鳳凰	34
13 清廣窯綠釉花卉紋雙耳陶扁壺	7	65清景德窯彩釉人物畫筒	35
14 清廣窯藍釉龍口梅花跌打藥酒把壺	8	66清石灣窯彩釉對鶴瓶	36
15 清廣窯黃釉刻花雙耳陶扁壺	8	67清石灣窯彩釉孔雀(一對)	37
16 清湖綠釉四耳罐	9	68清木雕李鐵拐坐象飲酒像	38
17 清紫竹杯	9	69明青花瓷瓶	39
18 清廣窯黑釉壺	10	70明仿磁州窯瓷盃	39
19 清廣窯綠釉陶瓶	10	71清黑釉四獸耳葫蘆瓶	40
20 黑釉環口古陶罐	11	72清黑釉凸花六角牡丹瓶	40
21 清廣窯綠釉陶罐	11	73清綠釉冰紋花瓶	41
22 清廣窯黃釉鯊魚提籃紋周公百歲酒罇	12	74清綠釉刻花牡丹瓶	41
23 清竹製水煙袋	13	75清石灣窯紫藍仿均釉花瓶	42
24 清雲南貴州土司用嵌銅煙筒	13	76清石灣窯青花雙耳浮彫麻姑獻壽瓶	42
25 清木刻福壽糕模	14	77清景德窯彩釉刻花瓶(附木雕座)	43
26 清紅釉紅蟲模	14	78清景德窯藍底紅雙花瓶	44
27 清調製檳榔用器	15	79清銅胎畫琺瑯花瓶	44
28 清奇竹珍玩	15	80清石灣窯綠釉刻花小口瓶	45
29 六朝白玉龍形帶鈎	16	81清宜興窯素胎紅色凸花梅瓶	45
30 清彩釉龍虎形帶鈎	16	82清石灣窯彩釉鑲花方形花鉢	46
31 清木雕帶鈎	17	83清木雕漁翁	47
32 清彩釉龍首瓷帶鈎	17	84清竹雕漁翁	48
33 清竹雕帶鈎	17	85民國初竹雕士兵	48
34 清石灣窯彩釉飛禽瓜果壁花插	18	86清竹雕李鐵拐	49
35 清石灣窯彩釉雲龍壁花插	18	87清竹雕漁翁	49
36 清石灣窯彩釉飛禽瓜果壁花插	19	88唐石雕將軍騎馬像	50
37 清石灣窯彩釉飛禽瓜果壁花插	19	89清奇竹飾物	50
38 清石灣窯彩釉飛禽瓜果壁花插	20	90清靈芝	51
39 清石灣窯彩釉飛禽瓜果壁花插	20	91清竹編花籃	51
40 清石灣窯彩釉飛禽瓜果壁花插	21	92清盤根木座	52
41 清石灣窯彩釉鴨荷壁花插	21	93清竹雕詩文花卉筆筒	52
42 清石灣窯彩釉鴨荷壁花插	22	94清竹雕仕女筆筒	53
43 清石灣窯彩釉鴨荷壁花插	22	95清竹雕墨漆山水筆筒	53
44 清石灣窯彩釉飛禽瓜果壁花插	23	96清竹雕墨漆山水筆筒	54
45 清石灣窯彩釉鸞竹壁花插	23	97清竹雕梅蘭竹菊筆筒	54
46 清石灣窯醬黃釉蝶形壁花插	24	98清素胎錫形陶撲滿	55
47 清石灣窯灰釉蟹形壁花插(一對)	24	99清鳥籠用銅食器四件(青瓷一件、白玉一件、象牙二件)	55
48 清石灣窯綠釉金魚形壁花插	25	100 清牙雕鳥籠用銅食器	55
49 清石灣窯藍釉象首壁花插	25		

101	清銅製七巧盒	56	142	清木雕漆金武判像	78
102	清竹製昆蟲銅簾	56	143	清木雕漆金釋迦牟尼佛像	79
103	清竹雕昆蟲銅簾	56	144	清木雕漆金釋迦牟尼佛像	79
104	清銅胎畫琺瑯烏羅用銅食器	57	145	清木雕觀音像	80
105	清湖絲袖凸花畫筒	57	146	清木雕觀音像	80
106	清竹雕詩文腕杖	58	147	清建窯白釉千手觀音像	81
107	清銅胎畫琺瑯調色盤	58	148	清木雕漆金善財童子像	81
108	清乳白釉印花水盂	59	149	清木雕彩漆媽祖暨女侍像	82
109	清石灣窯彩釉飛禽花葉筆洗	59	150	清木雕漆金媽祖像	83
110	清石灣窯均藍釉飛鷹筆洗	60	151	清木質透雕忠義關聖帝君神主牌	83
111	明末石灣窯黃綠釉梅花紋圓几	60	152	清彩色泥塑關聖帝君像	84
112	清銅胎掐絲琺瑯洗	61	153	清彩色泥塑關聖帝君像	84
113	清藤編涼枕	61	154	清木雕貼金關平像	85
114	清木製涼枕	62	155	明木雕漆金真武大帝像	85
115	清漆繪皮涼枕	62	156	清木雕漆金玄武帝像	86
116	清金屬製博羅二件	63	157	清木雕漆金王爺像	86
117	清鑲花銅鐘	63	158	清木雕貼金靈寶天尊、道德天尊、元始天尊、張天師像	87
118	清羅盤	64	159	清木雕漆金寶利大王	88
119	元至元卅一年製銅權	64	160	清木雕漆金財神	88
120	銀權二件	64	161	清木雕漆金五千歲像	89
121	元至正二年大都路造銅權	65	162	清木雕漆金陳靖姑像	89
122	古三十兩銅權	65	163	清木雕漆金印章一對	90
123	石製權	66	164	清木雕雷震子像	91
124	清木雕數錢板	66	165	清木雕漆金武財神像	91
125	木製圓規	67	166	清木雕漆金財神	92
126	木製悉斗	67	167	清木雕漆金神像	92
127	清刻花手鋸	68	168	清康熙開玉雕釋迦牟尼佛	93
128	清木刨	68	169	清泉州鑄刻薛平貴像	94
129	清同治年銀票銅模	69	170	清銅鑄蘇東坡像	95
130	清光緒年木質透雕貼金花籃一對	70	171	民國崔國雄石灣陶塑陸羽品茶	95
131	清木質透雕漆金人物香插	71	172	民國崔國雄石灣陶塑蘇武牧羊(二件)	96
132	清木質透雕漆金琴形香插	71	173	民國崔國雄石灣陶塑李白醉酒	97
133	清木質透雕漆金書琴刻香插	72	174	民國崔國雄石灣陶塑母子情深(雙猴)	97
134	清木雕素色木魚	73	175	民國崔國雄石灣陶塑張良習履(二件)	98
135	清銅扇	73	176	民國崔國雄石灣陶塑木蘭從軍(二件)	99
136	清道光五年鑄銅磬	74	177	民國崔國雄石灣陶塑彌勒佛	100
137	清木雕金剛杵	75	178	民國崔國雄石灣陶塑雙童嬉戲(三件)	100
138	清木雕葉窗宗主牌	76	179	民國崔國雄石灣陶塑楊香扼虎(二件)	101
139	清鑄鎮妖鈴	77	180	民國崔國雄石灣陶塑花和尚魯智深	102
140	清木雕漆金龕龕(門神之一)	77			
141	清木雕漆金文判像	78			

Contents

Preface	i
An introduction to the folkware, volume II	ii
Contents	iii
1. Underglaze-blue saucer with a landscape motif; late Ch'ing dynasty Ching-teh ware. D: 25.4cm	1
2. Underglaze-blue saucer with a landscape motif, floral-design edge, and foliated edge; late Ch'ing dynasty Ching-teh ware. D: 25 cm	1
3. Underglaze-blue commemorative saucer from the Swatow ship the Hamburg; late Ch'ing dynasty Kuang ware. D: 25.4 cm	2
4. Painted enamel copper-base plate with an octagonal shape; Ch'ing dynasty. D: 22.8 cm	2
5. Ferrous-glazed square vase with a figure motif; Ch'ing dynasty Ch'ien-lung period Ching-teh ware. MD: 4 cm H: 14.5 cm	3
6. Ceramic jar with an underglaze-blue figure motif; Ming dynasty Ch'eng-hua ware. MD: 7 cm H: 17.7 cm	3
7. Copper-base oval plate with a painted enamel figure motif; Ch'ing dynasty. D: 27.8 cm	4
8. Copper-base octagonal plate with a painted enamel figure motif; Ch'ing dynasty. L: 29.9 cm W: 21.5 cm	4
9. Pair of copper-base handled ewers with a painted enamel longevity motif; Ch'ing dynasty. MD: 6 cm H: 31.5 cm	5
10. Capped flat flask of carved bamboo with a landscape, figure, and poetry motif; Ch'ing dynasty. H: 13.5 cm (front)	6
11. Capped flat flask of carved bamboo with a landscape, figure, and poetry motif; Ch'ing dynasty. (back)	6
12. Flat ceramic flask with four loop handles and a grainy purple glaze; Ch'ing dynasty I-hsing ware. MD: 2 cm H: 14.7 cm	7
13. Flat ceramic flask with a brown glaze, flower motif, and two loop handles; Ch'ing dynasty Kuang ware. MD: 6.5 cm H: 20.5 cm	7
14. Handled ewer for medicinal wine with a blue glaze, dragon spout, and prunus design; Ch'ing dynasty Kuang ware. MD: 15.5 cm H: 42 cm	8
15. Flat ceramic flask with a yellow glaze, incised floral design, and two loop handles; Ch'ing dynasty Kuang ware. MD: 3.8 cm H: 19.6 cm	8
16. Jar with a blue-green glaze and four pierced protrusions; Ch'ing dynasty. MD: 8.5 cm H: 14.2 cm	9
17. Purple glazed cup with a bamboo motif; Ch'ing dynasty. MD: 7.5 cm H: 4.5 cm	9
18. Spouted jug with a black glaze; Ch'ing dynasty Kuang ware. MD: 5 cm H: 22.5 cm	10
19. Green-glazed pottery jar; Ch'ing dynasty Kuang ware. MD: 8.5 cm H: 21.3 cm	10
20. Ancient pottery jar with black glaze, ringed mouth, and unglazed bottom edge. MD: 8 cm H: 24.5 cm	11
21. Green-glazed jar; Ch'ing dynasty Kuang ware. MD: 9 cm H: 25.8 cm	11
22. Yellow-glazed capped jar for "100-Year-Old Chou Kung Wine," with a design of a fish and basket of flowers; Ch'ing dynasty Kuang ware. MD: 15 cm H: 57 cm	12
23. Bamboo water pipe; Ch'ing dynasty. H: 23 cm	13
24. Bronze-inlaid pipe from a Yunnan province aboriginal tribe; Ch'ing dynasty. L: 40 cm	13
25. Pastry mold of carved wood with fortune and longevity motifs; Ch'ing dynasty. L: 22 cm	14
26. Red-glazed ceramic mold for tortoise-shaped pastries; Ch'ing dynasty. L: 17 cm	14
27. Carved implements for preparing betel nuts; Ch'ing dynasty. (bamboo knife) L: 24 cm (scissors) L: 17.5 cm	15
28. Bibelot of oddly-shaped bamboo; Ch'ing dynasty. L: 16.5 cm	15
29. Dragon-shaped belt hook of white jade; Six Dynasties period. L: 13.5 cm	16
30. Polychrome-glazed belt hook with a relief dragon and tiger motif; Ch'ing dynasty. L: 12.2 cm	16
31. Carved-wood belt hook; Ch'ing dynasty. L: 11.5 cm	17
32. Porcelain dragon's head belt hook with polychrome glaze; Ch'ing dynasty. L: 8.5 cm	17
33. Belt hook of carved ivory; Ch'ing dynasty. L: 9.4 cm	17
34. Polychrome-glazed ceramic wall vase with a relief bird and flora motif; Ch'ing dynasty Shih-wan ware. H: 17 cm	18
35. Polychrome-glazed ceramic wall vase with a relief cloud and dragon motif; Ch'ing dynasty Shih-wan ware. H: 22 cm	18
36. Polychrome-glazed ceramic wall vase with a relief bird and flora motif; Ch'ing dynasty Shih-wan ware. H: 20 cm	19

37. Polychrome-glazed ceramic wall vase with a relief bird and flora motif; Ch'ing dynasty Shih-wan ware. H: 14 cm 19
38. Polychrome-glazed ceramic wall vase with a relief bird and flora motif; Ch'ing dynasty Shih-wan ware. H: 14.5 cm 20
39. Polychrome-glazed ceramic wall vase with a relief bird and flora motif; Ch'ing dynasty Shih-wan ware. H: 15.7 cm 20
40. Polychrome-glazed ceramic wall vase with a relief bird and flora motif; Ch'ing dynasty Shih-wan ware. H: 17 cm 21
41. Polychrome-glazed ceramic wall vase with a relief duck and flower motif; Ch'ing dynasty Shih-wan ware. H: 14.5 cm 21
42. Polychrome-glazed ceramic wall vase with a relief duck and flower motif; Ch'ing dynasty Shih-wan ware. H: 15 cm 22
43. Polychrome-glazed ceramic wall vase with a relief duck and flower motif; Ch'ing dynasty Shih-wan ware. H: 23 cm 22
44. Polychrome-glazed ceramic wall vase with a relief bird and flora motif; Ch'ing dynasty Shih-wan ware. H: 19 cm 23
45. Polychrome-glazed ceramic wall vase with a relief egret and bamboo motif; Ch'ing dynasty Shih-wan ware. H: 19.5 cm 23
46. Brown and yellow glazed ceramic wall vase with a snail-shell shape; Ch'ing dynasty Shih-wan ware. H: 17 cm 24
47. A pair of gray-glazed ceramic wall vases with a crab shape; Ch'ing dynasty Shih-wan ware. H: 14 cm 24
48. Green-glazed ceramic wall vase with a goldfish shape; Ch'ing dynasty Shih-wan ware. H: 23.2 cm 25
49. Blue-glazed ceramic wall vase with an elephant-head shape; Ch'ing dynasty Shih-wan ware. H: 19 cm 25
50. Two green-glazed ceramic wall vases with a fish shape; Ch'ing dynasty Shih-wan ware. (from left) H: 15.7 cm H: 20 cm 26
51. Two blue-glazed ceramic wall vases with a lion shape; Ch'ing dynasty Shih-wan ware. (from left) H: 23 cm H: 20 cm 26
52. Polychrome-glazed ceramic wall vase with a bamboo and crab shape; Ch'ing dynasty Shih-wan ware. H: 18.5 cm 27
53. Polychrome-glazed ceramic wall vase with a bamboo fish-trap shape and relief crabs and snails; Ch'ing dynasty Shih-wan ware. H: 22 cm 27
54. Green-glazed ceramic wall vase with a vegetable shape; Ch'ing dynasty Shih-wan ware. L: 26 cm 28
55. Polychrome-glazed ceramic wall vase with a peach shape; Ch'ing dynasty Shih-wan ware. H: 18.8 cm 28
56. Polychrome-glazed ceramic wall vase with a bamboo shape and relief birds. Ch'ing dynasty Shih-wan ware. H: 19 cm 29
57. Polychrome-glazed ceramic wall vase with a "treasure vase" shape; Ch'ing dynasty Shih-wan ware. H: 23 cm 29
58. Polychrome-glazed ceramic wall vase with a "treasure vase" shape; Ch'ing dynasty Shih-wan ware. H: 17.3 cm 30
59. Polychrome-glazed ceramic wall vase with a "treasure vase" shape; Ch'ing dynasty Shih-wan ware. H: 21.5 cm 30
60. Polychrome-glazed ceramic wall vase with a relief depiction of the Aesop fable "The Fox and the Crow"; Ch'ing dynasty Shih-wan ware. H: 19.5 cm 31
61. Polychrome-glazed ceramic wall vase with a relief depiction of Wu Sung fighting a tiger; Ch'ing dynasty Shih-wan ware. H: 21.5 cm 31
62. White-glazed covered container with a lion and flower motif and black highlights; Ming dynasty imitation Ts'u-chow ware. MD: 15.5 cm H: 24 cm 32
63. Roaring lion with a "pomegranate-red" glaze; Ch'ing dynasty Shih-wan ware. H: 25 cm 33
64. Polychrome-glazed phoenix; Ch'ing dynasty Shih-wan ware. H: 56 cm 34
65. Painting barrel with polychrome-glazed figures; Ch'ing dynasty Ching-teh ware; with wooden base. MD: 20.2 cm H: 60.5 cm 35
66. Polychrome-glazed pair of vases with a chicken shape; Ch'ing dynasty Shih-wan ware. H: 23 cm 36
67. Pair of polychrome-glazed peacocks; Ch'ing dynasty Shih-wan ware. H: 34.5 cm 37
68. Carved wooden statue of the immortal Li T'ieh-kuai drinking wine; Ch'ing dynasty. H: 17.5 cm 38
69. Blue-and-white porcelain vase; Ming dynasty. MD: 8.5 cm H: 16.5 cm 39
70. Porcelain basin; Ming dynasty imitation Ts'u-chow ware. MD: 17.5 cm H: 9.5 cm 39
71. Bottle-gourd shaped vase with four beast-head protrusions and black glaze; Ch'ing dynasty. MD: 5 cm H: 21.4 cm 40

72. Hexagonal black-glazed vase with an incised peony motif; Ch'ing dynasty. MD: 7 cm H: 19.4 cm 40
73. Vase with green crackle glaze; Ch'ing dynasty. MD: 7 cm H: 23.5 cm 41
74. Green-glazed vase with an incised peony design; Ch'ing dynasty. MD: 5.5 cm H: 24.3 cm 41
75. Vase with a blue-glazed design in imitation of Ch'ün ware; Ch'ing dynasty Shih-wan ware. MD: 8.5 cm H: 23.7 cm 42
76. Blue-and-white vase with two side protrusions and a carved design of Ma-ku presenting wishes for longevity; Ch'ing dynasty Shih-wan ware. MD: 8 cm H: 24.4 cm 42
77. Vase with incised and polychrome-glazed floral motif; Ch'ing dynasty Ching-teh ware; with wooden base. MD: 15.4 cm H: 71.5 cm 43
78. Blue-glazed vase with a red fish decoration; Ch'ing dynasty Ching-teh ware. MD: 8 cm H: 29 cm 44
79. Painted enamel vase; Ch'ing dynasty. H: 17.5 cm 44
80. Small-mouthed vase with brown glaze and incised floral motif; Ch'ing dynasty Shih-wan ware. MD: 5.8 cm H: 19.5 cm 45
81. Mei-p'ing vase with unglazed surface and red-glazed relief flowers; Ch'ing dynasty I-hsing ware. MD: 4.5 cm H: 17 cm 45
82. Square flower vase with floral fretwork and polychrome glaze; Ch'ing dynasty Shih-wan ware. H: 23.5 cm 46
83. Carved wooden fisherman; Ch'ing dynasty. H: 32 cm 47
84. Carved bamboo fisherman; Ch'ing dynasty. H: 16.8 cm 48
85. Carved bamboo warrior; early Republic. H: 15.3 cm 48
86. The immortal Li T'ieh-k'ai of carved bamboo; Ch'ing dynasty. H: 25 cm 49
87. Carved bamboo fisherman; Ch'ing dynasty. H: 16 cm 49
88. Carved stone general on horseback; Tang dynasty. H: 27 cm 50
89. Decoration of naturally-shaped bamboo; Ch'ing dynasty. H: 13.5 cm 50
90. Longevity fungus (*Fomes japonica*); Ch'ing dynasty. H: 21.8 cm 51
91. Woven bamboo flower basket; Ch'ing dynasty. H: 43.2 cm 51
92. Polished root stand; Ch'ing dynasty. H: 22.8 cm 52
93. Carved bamboo brush barrel with poetry and floral motif; Ch'ing dynasty. MD: 5.5 cm H: 13.1 cm 52
94. Carved bamboo brush barrel with a design of seated ladies; Ch'ing dynasty. MD: 10.9 cm H: 14.5 cm 53
95. Black lacquer brush barrel on a carved bamboo base with a landscape motif; Ch'ing dynasty. MD: 4.7 cm H: 12.8 cm 53
96. Brush barrel of bamboo root; Ch'ing dynasty. 54
97. Carved bamboo brush barrel with a prunus, chrysanthemum, bamboo, and pine motif; Ch'ing dynasty. H: 15 cm 54
98. Unglazed piggy bank; Ch'ing dynasty. MD: 3 cm H: 3.9 cm 55
99. Four birdcage accessories; Ch'ing dynasty; one of blue-glazed porcelain, one of white jade, and two of ivory. (From left) H: 3.2 cm H: 1.8 cm MD: 2.7 cm H: 2.9 cm MD: 3.3 cm H: 1.6 cm 55
100. Carved ivory bird feeder; Ch'ing dynasty. MD: 3.3 cm H: 1.6 cm 55
101. Bronze seven-piece puzzle chest; Ch'ing dynasty. H: 3.8 cm L: 9.6 cm 56
102. Bamboo cricket cage; Ch'ing dynasty H: 3.3 cm 56
103. Octagonal bamboo cricket cage; Ch'ing dynasty. H: 5.9 cm 56
104. Bronze bird feeder with painted enamel design; Ch'ing dynasty. H: 3.2 cm 57
105. Green-glazed painting barrel with relief floral pattern; Ch'ing dynasty. MD: 18 cm H: 33 cm 57
106. Inscribed bamboo armrest; Ch'ing dynasty. L: 54.8 cm 58
107. Bronze palette with painted enamel design; Ch'ing dynasty. D: 20.8 cm 58
108. Milky-white glazed water container with an incised floral pattern; Ch'ing dynasty. MD: 6.5 cm H: 5 cm 59
109. Polychrome-glazed porcelain brush washer decorated with flowers, fruits, and birds; Ch'ing dynasty Shih-wan ware. H: 9.6 cm 59
110. Chun-blue glazed brush washer with a standing eagle; Ch'ing dynasty. H: 11.5 cm 60
111. Yellowish-green glazed round low table with a prunus motif; late Ming dynasty Shih-wan ware. D: 18 cm H: 5.5 cm 60

112. Bronze brush washer with an enamel decoration; Ch'ing dynasty. D: 30 cm	61	135. Bronze fan; Ch'ing dynasty. L: 45.5 cm	73
113. Rattan pillow; Ch'ing dynasty. H: 10 cm L: 25 cm	61	136. Cast-bronze ching, a Buddhist vessel that is struck during chanting; Ch'ing dynasty Tao-kuang reign. MD: 22 cm H: 19.5 cm	74
114. Wooden pillow; Ch'ing dynasty. H: 16.5 cm L: 33 cm	62	137. Wooden Buddhist altar fittings; Ch'ing dynasty. L: 27.5 cm	75
115. Painted leather pillow; Ch'ing dynasty. L: 37 cm	62	138. Mongolian ancestral tablet of wood; Ch'ing dynasty. H: 74 cm	76
116. Two gold pocket watches; Ch'ing dynasty. (from left) D: 5 cm D: 5.5 cm	63	139. Cast-tin centipede; Ch'ing dynasty. L: 51 cm	77
117. Bronze clock with floral fretwork; Ch'ing dynasty. D: 12.2 cm H: 7.5 cm	63	140. The door god Yu Lei of carved wood; Ch'ing dynasty. H: 22.8 cm	77
118. Compass; Ch'ing dynasty. D: 9 cm H: 3.5 cm	64	141. Gold-painted wood Taoist deity, the Civil Judge; Ch'ing dynasty. H: 27 cm	78
119. Two bronze weights; Yuan dynasty. (from left) H: 9.2 cm H: 8.2 cm	64	142. Gold-painted wood Taoist deity, the Military Judge; Ch'ing dynasty. H: 26 cm	78
120. Two ancient iron weights. (from left) H: 4.7 cm H: 4.4 cm	64	143. Gold-painted wood Sakayamuni Buddha; Ch'ing dynasty. H: 10.3 cm	79
121. Bronze weight made by Ta-tu-fu in 1342; Yuan dynasty. H: 10.5 cm	65	144. Gold-painted wood Sakayamuni Buddha; Ch'ing dynasty. H: 10.3 cm	79
122. Ancient 30-liang bronze weight. H: 9.2 cm	65	145. Carved-wood Goddess of Mercy; Ch'ing dynasty. H: 11.6 cm	80
123. Stone weight. H: 15.6 cm	66	146. Carved-wood Goddess of Mercy; Ch'ing dynasty. H: 31.5 cm	80
124. Wooden coin counter; Ch'ing dynasty. L: 50.5 cm W: 38 cm	66	147. Ceramic Thousand-Armed Goddess of Mercy with white glaze; Ch'ing dynasty Chien ware. H: 19.6 cm	81
125. Wooden compass. L: 28 cm	67	148. Gold-painted wood Sudhana, a Buddhist disciple; Ch'ing dynasty. H: 32.5 cm	81
126. Two carpenter's inked-string markers. (from left) L: 12.1 cm H: 4.3 cm L: 9.2 cm H: 3.8 cm	67	149. Carved-wood Matsu, the Taoist Goddess of the Sea, with her female attendants; Ch'ing dynasty. (from left) H: 15 cm H: 25 cm H: 25.5 cm H: 25 cm H: 15 cm	82
127. Handsaw with carved floral decorations; Ch'ing dynasty. L: 26 cm	68	150. Gold-painted wood Matsu, the Taoist Goddess of the Sea; Ch'ing dynasty. H: 16.6 cm	83
128. Carpenter's planer; Ch'ing dynasty. L: 33.3 cm H: 5.2 cm	68	151. Worship tablet for Kuan Yu, a deified hero from the Three Kingdoms period; Ch'ing dynasty. H: 20.2 cm	83
129. Bronze mold for silver currency; Ch'ing dynasty T'ung-chih reign. H: 16 cm	69	152. Painted molded clay Kuan Yu; Ch'ing dynasty. H: 20 cm	84
130. Pair of gilt wood fretwork flower baskets; Ch'ing dynasty. H: 59.5 cm	70	153. Painted molded-clay Kuan Yu; Ch'ing dynasty. H: 12 cm	84
131. Gold-painted wood incense holder; Ch'ing dynasty. H: 34.5 cm	71	154. Gilt carved-wood Kuan P'ing, the son of Kuan Yu; Ch'ing dynasty. H: 21.2 cm	85
132. Gold-painted wood incense holder; Ch'ing dynasty. H: 37 cm	71	155. Gold-painted wood Chen-wu Ta-ti, a Taoist deity; Ming dynasty. H: 32.5 cm	85
133. Gold-painted wood incense holder; Ch'ing dynasty. H: 23.2 cm	72	156. Gold-painted wood Hsüan-wu Ta-ti, a Taoist deity; Ch'ing dynasty. H: 15.7 cm	86
134. Buddhist fish drum of unpainted wood; Ch'ing dynasty. (drum) H: 18.5 cm (stick) L: 41.8 cm	73		

157. Gold-painted wood Wang Yeh, a Taoist deity; Ch'ing dynasty. H: 17.7 cm 86
158. Gilt wood figures of the four Taoist deities Ling-pao T'ien-tsun, Tao-te T'ien-tsun, Yüan-shih T'ien-tsun, and Chang T'ien-shih; Ch'ing dynasty. (from left) H: 29.5 cm H: 30 cm H: 30.5 cm H: 29.5 cm 87
159. Gold-painted wood Kuang-li Ta-wang, a folk figure; Ch'ing dynasty. H: 13.6 cm 88
160. Gold-painted wood God of Wealth; Ch'ing dynasty. H: 18.2 cm 88
161. Gold-painted wood folk figure, the Five-Thousand Year Lord; Ch'ing dynasty. H: 22.5 cm 89
162. Gold-painted wood Ch'en Ching-ku the Taoist Goddess; Ch'ing dynasty. H: 28.5 cm 89
163. Pair of seal-holder boys of gold-painted wood; Ch'ing dynasty. (from left) H: 53.5 cm H: 55 cm 90
164. Wood carving of Lei Chen-tzu, one of the legendary Sons of Thunder; Ch'ing dynasty. H: 26.5 cm 91
165. Gold-painted wood Martial God of Wealth; Ch'ing dynasty. : 14.5 cm 91
166. Gold-painted wood God of Wealth; Ch'ing dynasty. H: 26.6 cm 92
167. Gold-painted wood deity; Ch'ing dynasty. H: 34 cm 92
168. Carved-jade Sakyamuni Buddha; Ch'ing dynasty K'ang-hsi reign. H: 9cm 93
169. Carved-brick Hsieh P'ing-kuei, a hero of the T'ang dynasty; Ch'ing dynasty Ch'uan-chou ware. H: 26cm 94
170. Cast-bronze statue of the Sung poet Su Tung-p'o; Ch'ing dynasty. H: 25.5cm 95
171. Molded-pottery statue of Lu Yü drinking tea, made by Ts'ui Kuo-hsiung; Republic period Shih-wan ware. H: 16cm 95
172. Molded-pottery statue of Su Wu, a loyal minister of the early Han dynasty, made by Ts'ui-Kuo-hsiung; Republic period Shih-wan ware. H: 21.5cm H: 5.5cm 96
173. Molded-pottery statue of the great T'ang poet Li Po, made by Ts'ui Kuo-hsiung; Republic period Shih-wan ware. H: 11.5cm 97
174. Molded-pottery mother and child, made by Ts'ui Kuo-hsiung; Republic period Shih-wan ware. H: 8.2cm H: 13cm 97
175. Molded pottery Chang Liang, a great strategist who served the founder of the Han dynasty, made by Ts'ui Kuo-hsiung; Republic period Shih-wan ware H: 27cm H: 14.5cm 98
176. Molded pottery statue of the legendary heroine Mu-ian, made by Ts'ui Kuo-hsiung; Republic period Shih-wan ware. H: 16.7cm H: 24.5 cm 99
177. Molded pottery Maitreya Buddha, made by Ts'ui Kuo-hsiung; Republic period Shih-wan ware. H: 10.3 cm 100
178. Three molded-pottery statues of two juggler boys, made by Ts'ui Kuo-hsiung; Republic period Shih-wan ware. H: 13.2cm H: 8.5cm H: 11.5cm 100
179. Two molded-pottery statues of the folk figure Yang Hsiang choking a tiger, made by Ts'ui Kuo-hsiung; Republic period Shih-wan ware. H: 15cm 101
180. Molded-pottery statue of the notorious monk Lu Chih-shen, made by Ts'ui Kuo-hsiung; Republic period Shih-wan ware. H: 30.5cm 102
- (Note: D is diameter, MD is mouth diameter, L is length, and W is width)



1 清末景德窯青花風景瓷碟 直徑：25.4公分

Underglaze-blue saucer with a landscape motif; late Ch'ing dynasty Ching-teh ware. D: 25.4 cm



2 清末景德窯青花開片牙邊風景瓷碟 直徑：25公分

Underglaze-blue saucer with a landscape motif, floral-design edge, and foliated edge; late Ch'ing dynasty Ching-teh ware. D: 25 cm



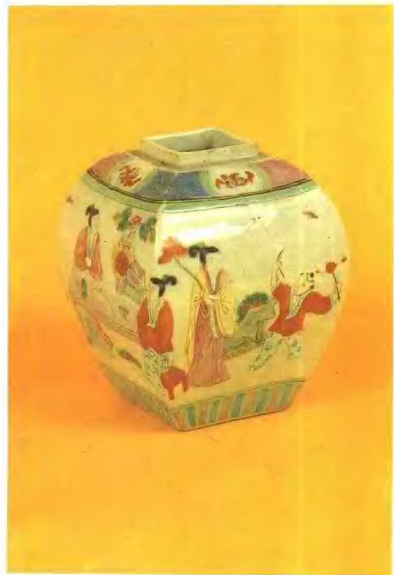
3 清末廣窯青花汕頭漢堡船員聯誼紀念瓷碟 直徑：25.4公分

Underglaze-blue commemorative saucer from the Swatow ship the Hamburg; late Ch'ing dynasty Kuang ware. D: 25.4 cm



4 清銅胎畫琺瑯八角盤 直徑：22.8公分

Painted enamel copper-base plate with an octagonal shape; Ch'ing dynasty. D: 22.8 cm



5 清乾隆景德窯彩釉人物方瓶

口徑：4公分 高：14.5公分

Ferrous-glazed square vase with a figure motif;
Ch'ing dynasty Ch'ien-lung period Ching-teh ware.
MD: 4 cm H: 14.5 cm



6 明成化青花人物瓷瓶

口徑：7公分 高：17.7公分

Ceramic jar with an underglaze-blue figure motif;
Ming dynasty Ch'ong-hua ware. MD: 7 cm H:
17.7 cm