

# 姜寨

——新石器时代遗址发掘报告

半坡博物馆、陕西省考古研究所、临潼县博物馆

下



文物出版社

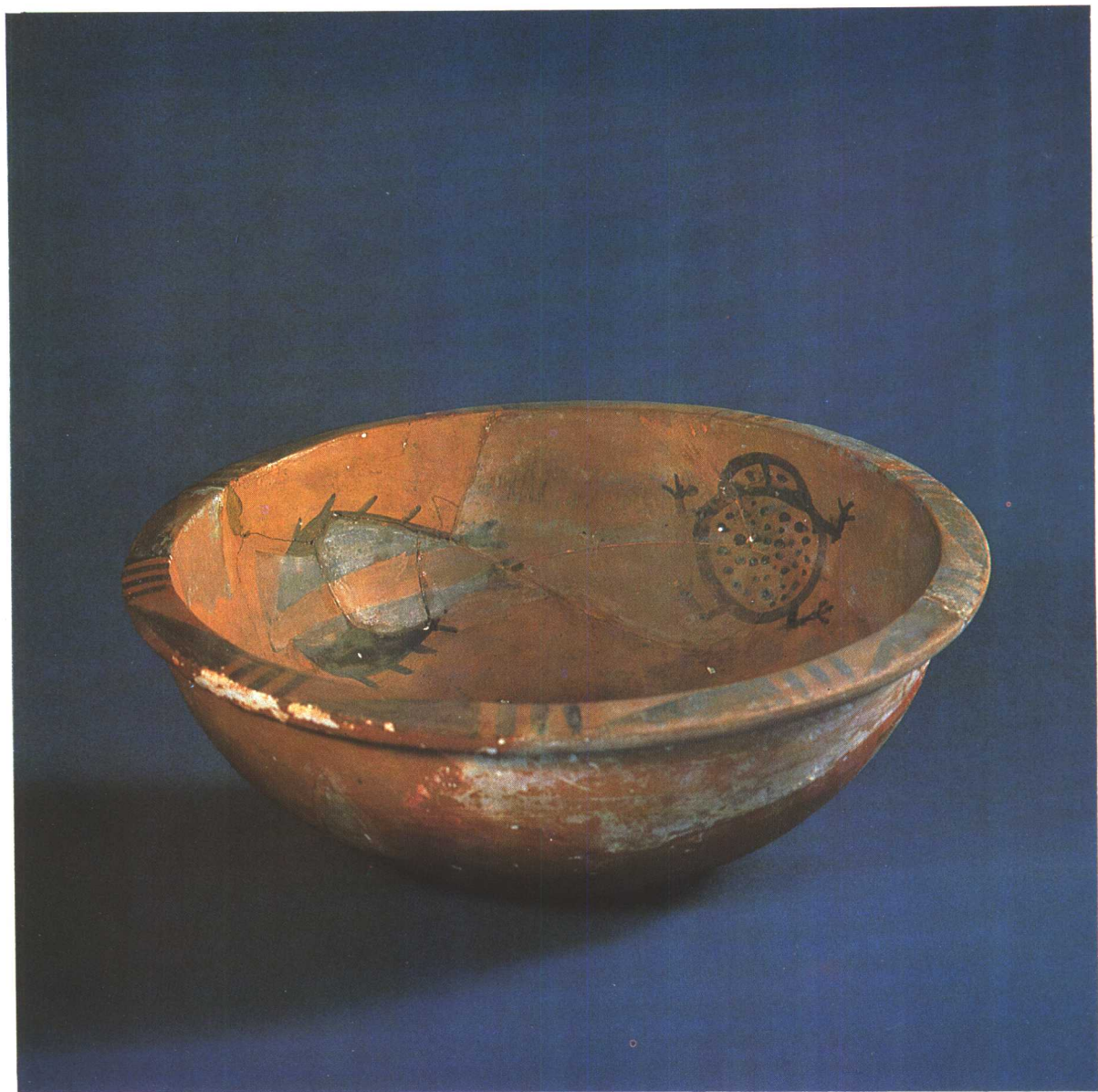
# 姜寨

—新石器时代遗址发掘报告

西安半坡博物馆  
陕西省考古研究所  
临潼县博物馆

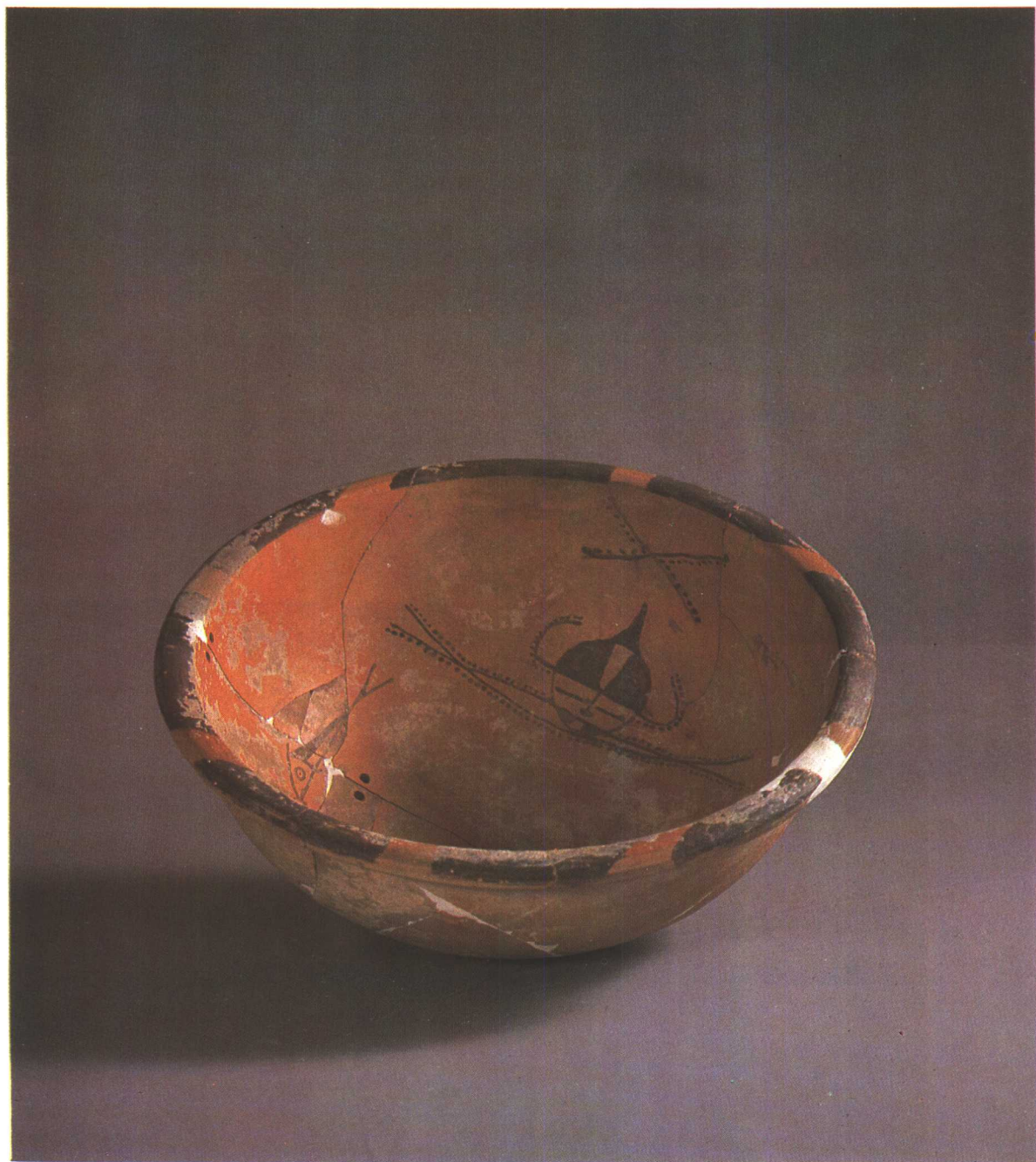
下

文物出版社  
北京



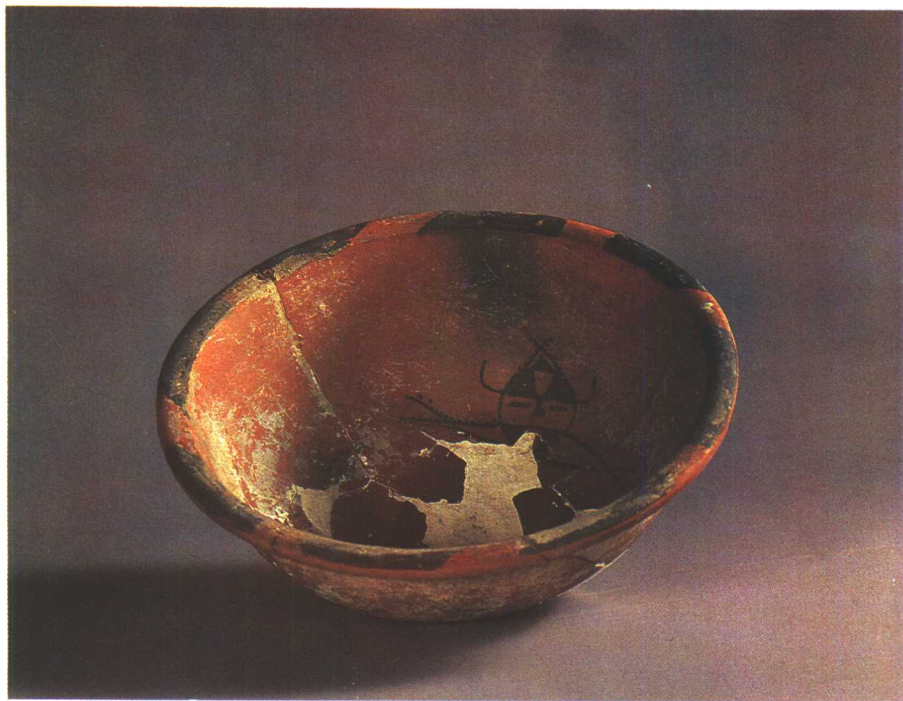
第一期彩陶盆T16 W63:1





第一期彩陶 盆T 254 W16 2 : 1

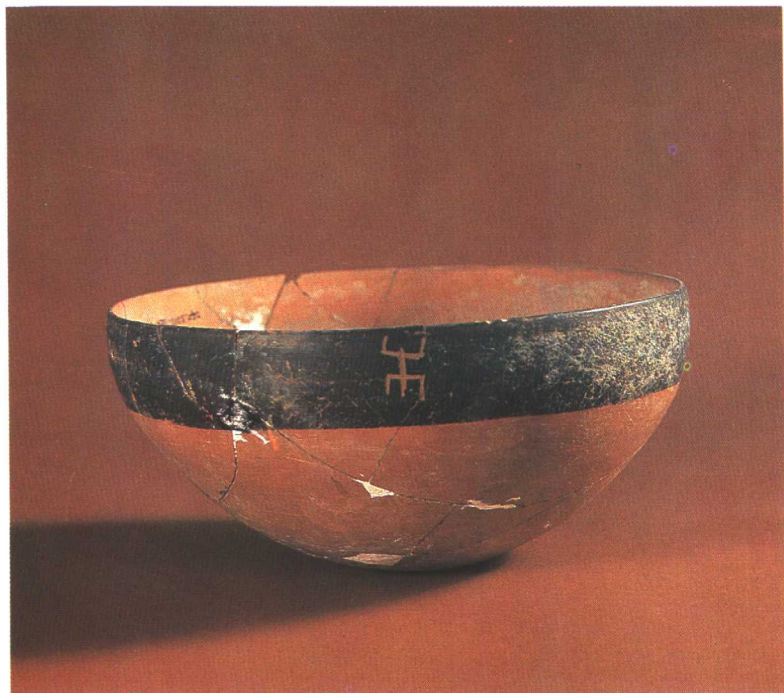




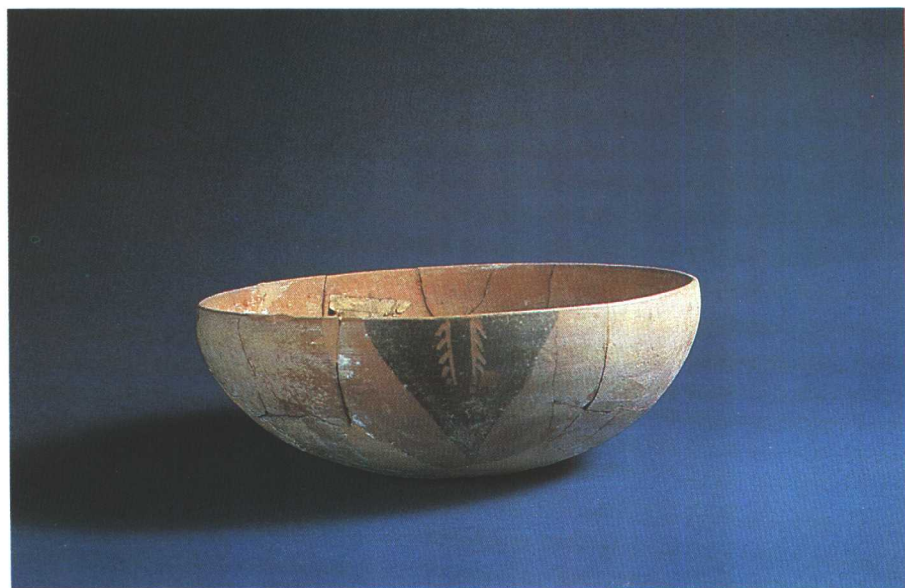
1. T 254 W 156: 1



2. T 58F 17: 1



1. T 254W157: 1

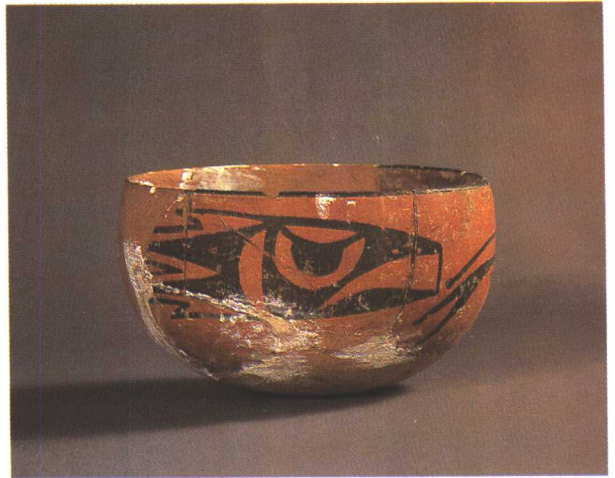


2. T 231W143: 1

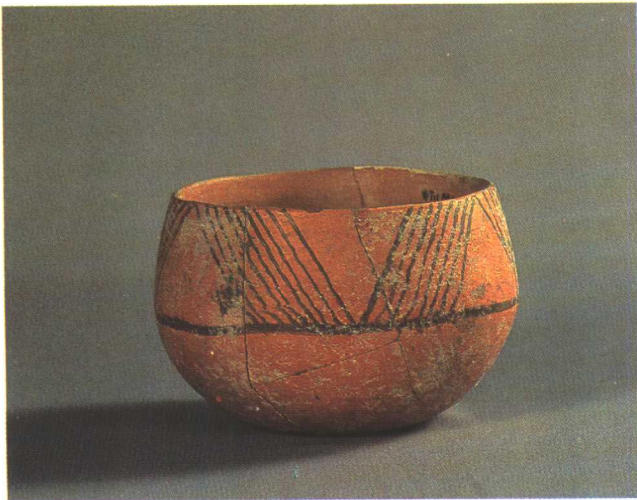




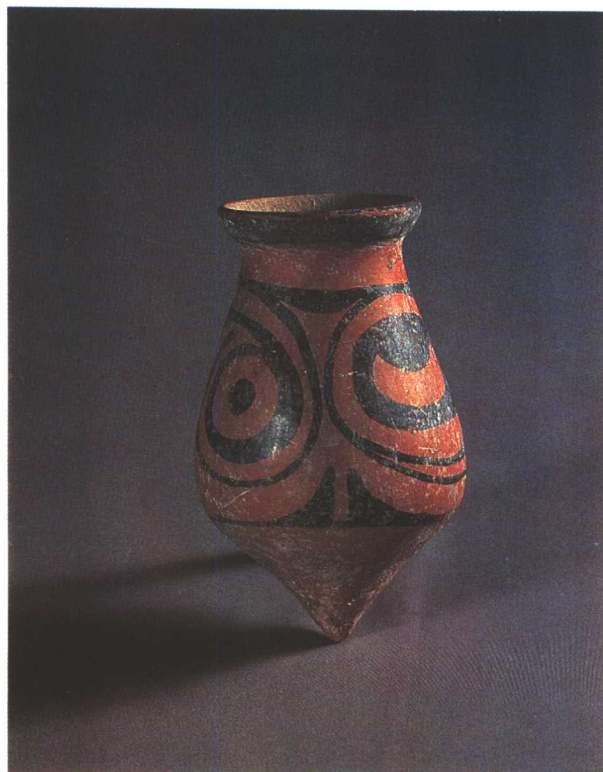
1. ZHT 4 M84: 19



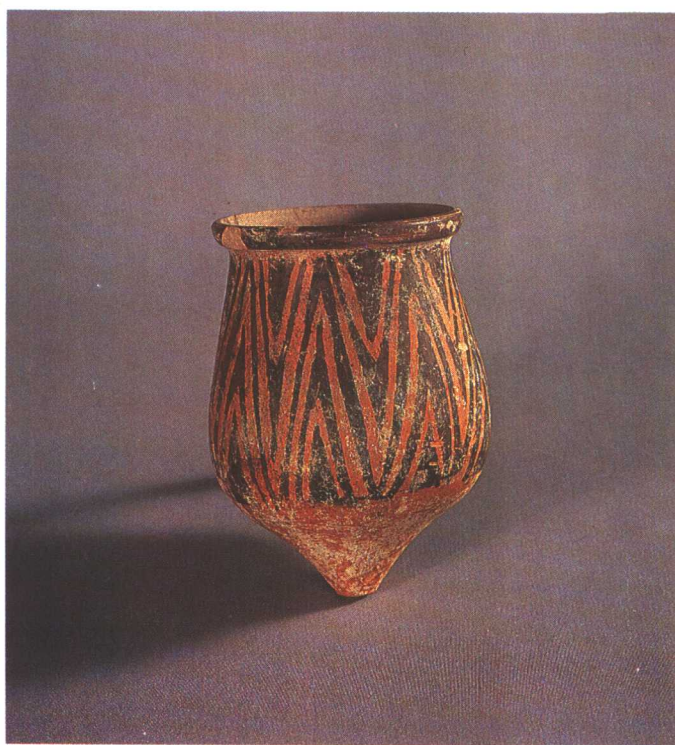
2. ZHT 8 ⑤: 2



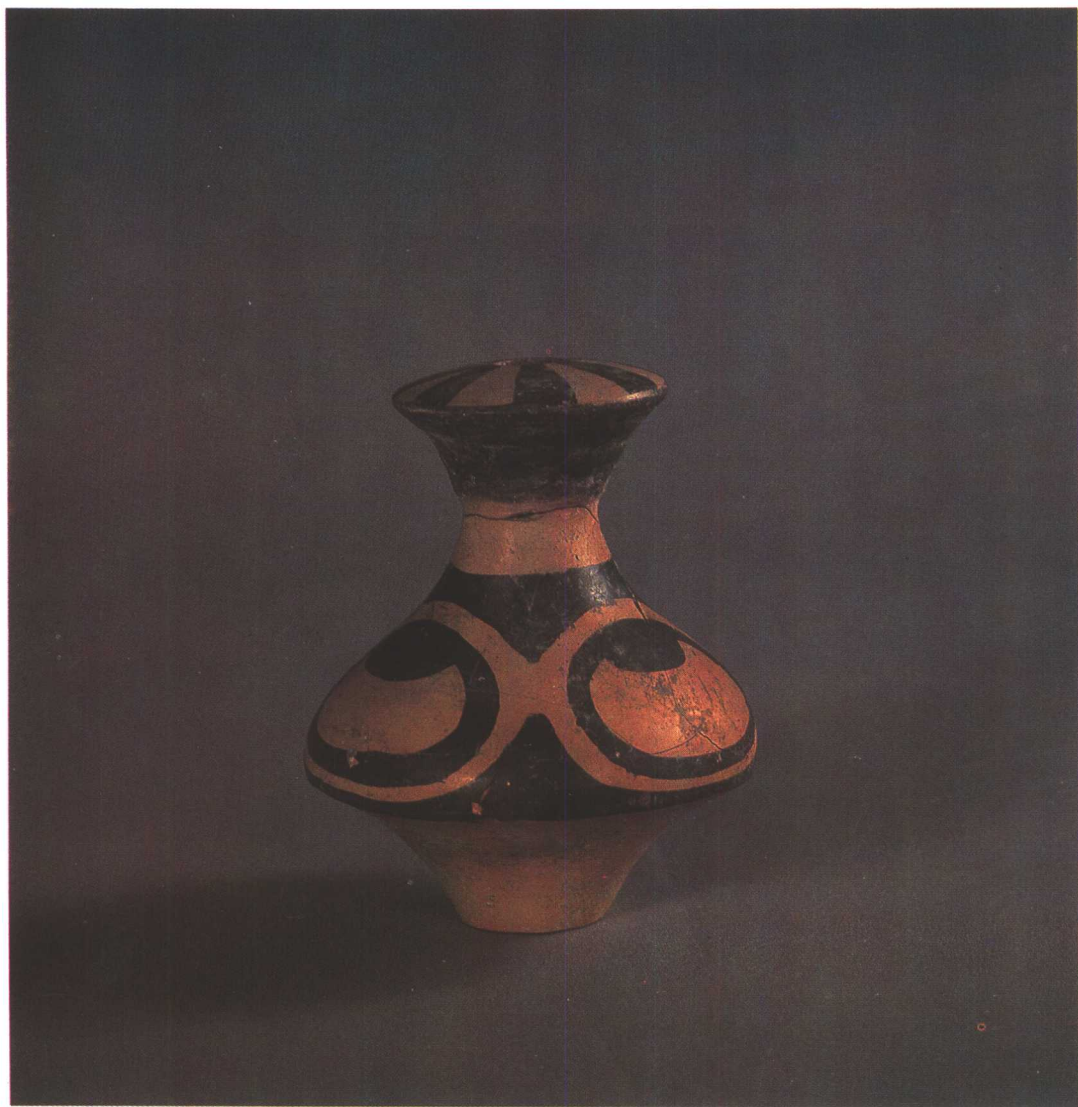
3. ZHT 11 M237: 1



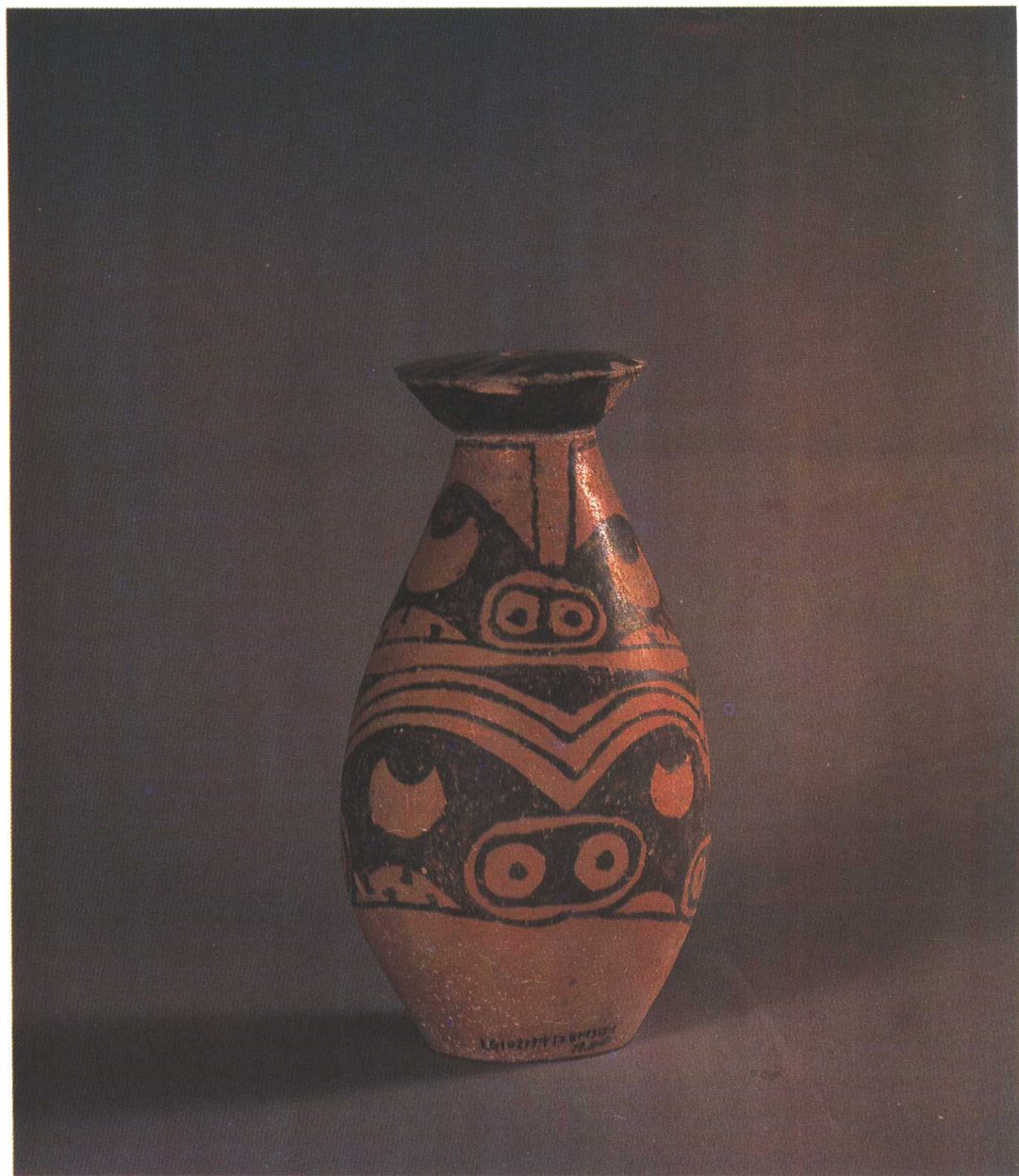
1. ZHT 5 M76: 8



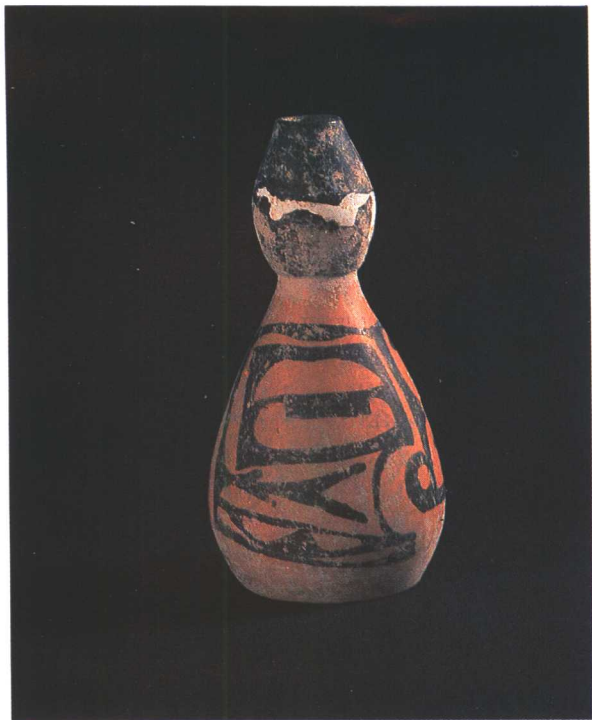
2. ZHT 5 M85: 3



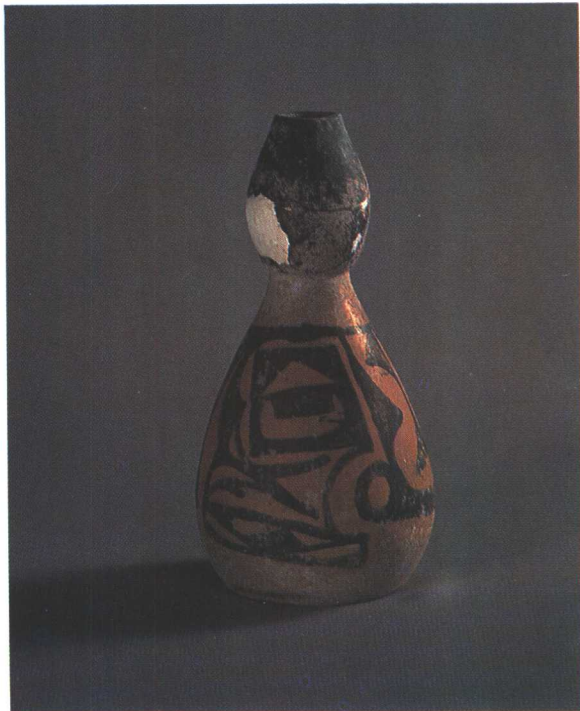
第二期细颈彩陶壶ZHT8M128:1



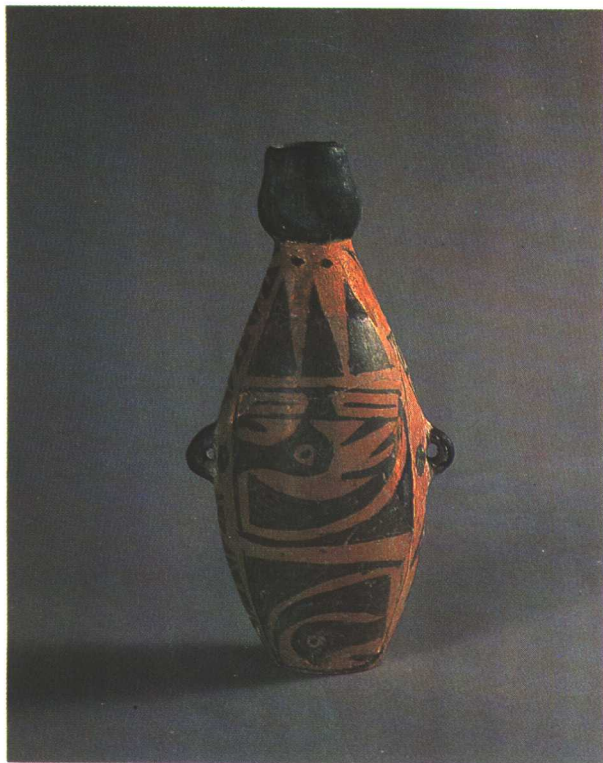
第二期彩陶壺 ZHT 28M31 2:1



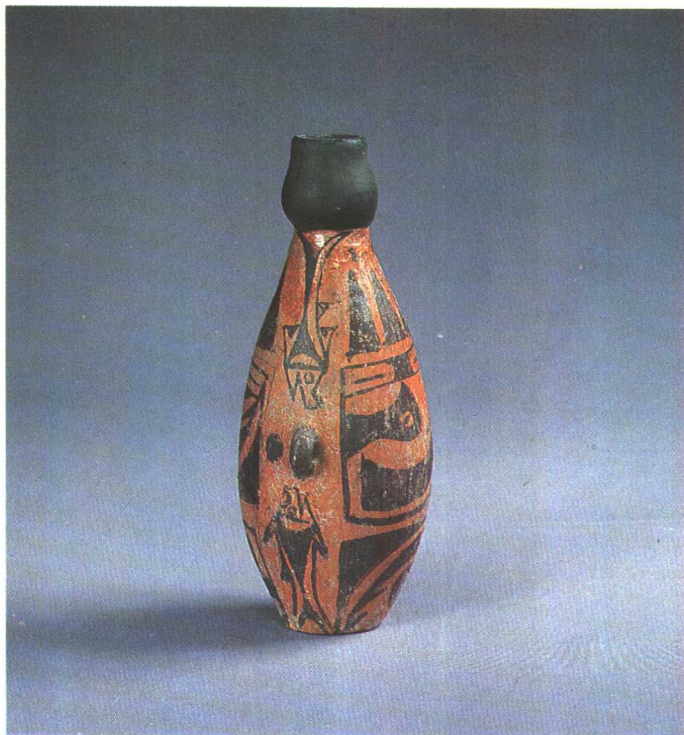
1. ZHT 8 M168: 3 (正面)



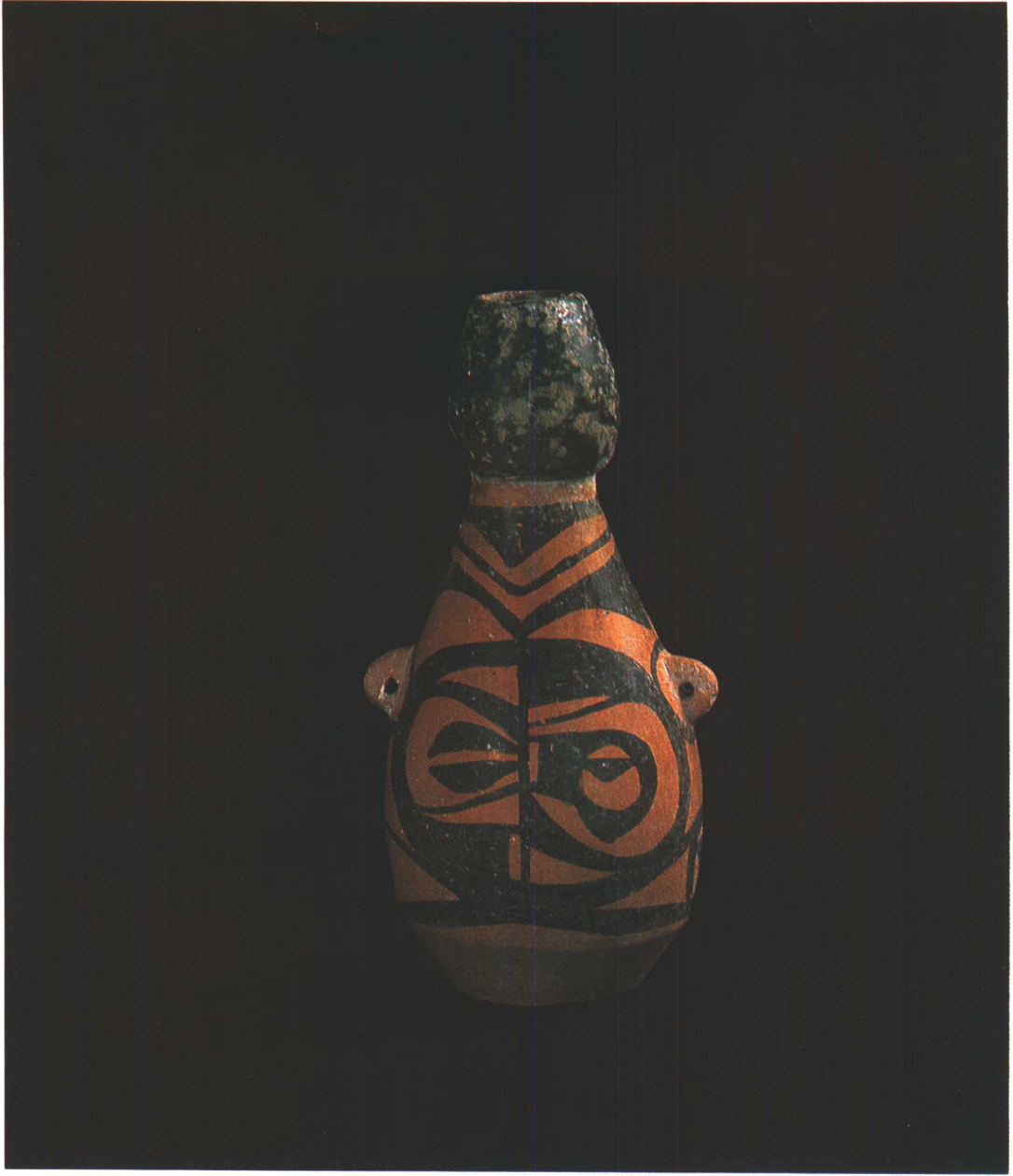
2. ZHT 8 M168: 3 (背面)



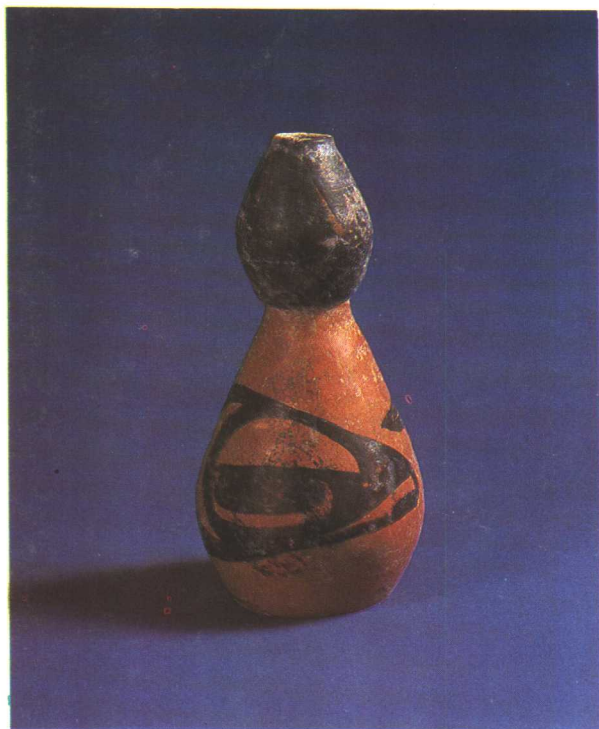
1. ZHT 14H467: 1 (正面)



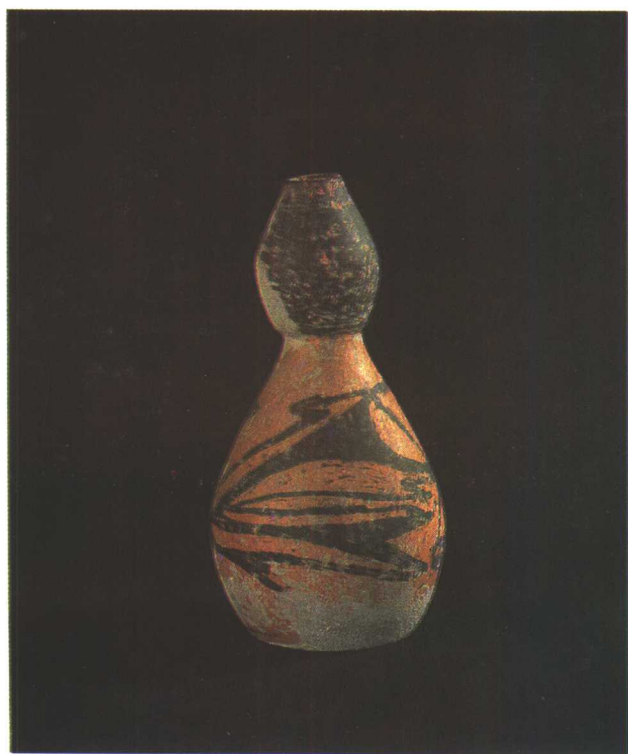
2. ZHT 14H467: 1 (侧面)



第二期葫芦形彩陶瓶 ZHT 5 M76:10

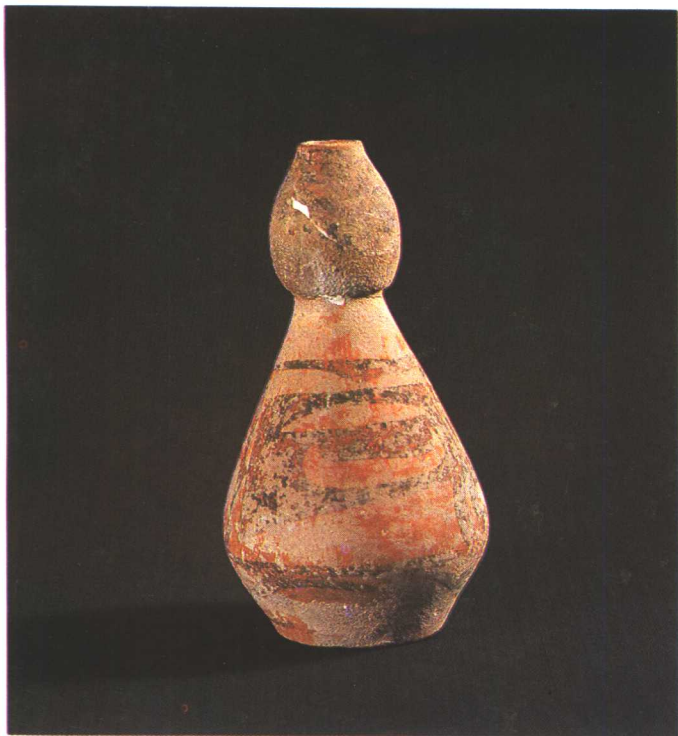


1. ZHT 12M238: 4

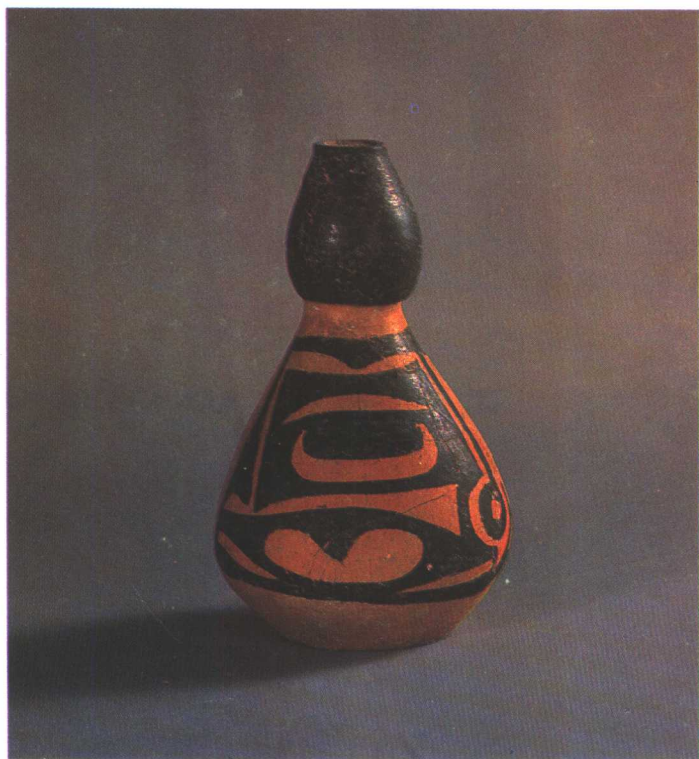


2. ZHT 11⑤: 60





1. ZHT 14⑤: 15



2. ZHT 25⑤: 4