



电脑软件全屏幕导学丛书

3天跨入

3D HOME Architect

即使您毫无电脑基础 也能迅速达到专业水准



③ 拖移改变窗体尺寸

全屏幕导学系列

曹建新 刘舒文 编著

广东科技出版社

3 ЯМА

3D HOME

Создание 3D-моделей объектов и интерьеров

ПРОГРАММНОЕ ОБЕСПЕЧЕНИЕ КОМПЬЮТЕРНОЙ ГРАФИКИ



www.3dhome.ru

ПРОГРАММНОЕ ОБЕСПЕЧЕНИЕ



电脑软件全屏幕导学丛书

3天跨入

3D HOME Architect

即使您毫无电脑基础 也能迅速达到专业水准

曹建新 刘舒文 编著

广东科技出版社
广州

图书在版编目 (CIP) 数据

3天跨入3D Home/曹建新,刘舒文编著. —广州:广东科技出版社, 1999. 2

ISBN 7-5359-2170-1

I. 3…

II. ①曹…②刘…

III. 计算机应用

IV. TP39

3 Tian Kuaru 3D Home Architect

出版发行: 广东科技出版社

(广州市环市东路水荫路11号 邮码: 510075)

E-mail: gdkjwb@ns.guangzhou.gb.com.cn

出版人: 黄达全

经 销: 广东省新华书店

印 刷: 东莞新丰印刷有限公司

(东莞市凤岗镇天堂围 邮码: 511751)

规 格: 787mm×1092mm 1/16 印张15.5 插页8 字数400千

版 次: 1999年2月第1版

1999年2月第1次印刷

印 数: 0001~5200册

定 价: 40.00元

如发现因印装质量问题影响阅读, 请与承印厂联系调换。

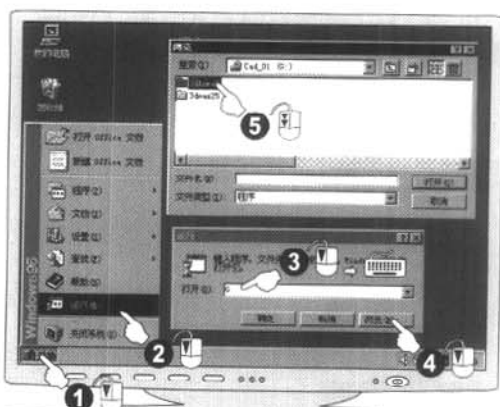
3D Home Architect 准备篇

程序安装



3D Home Architect 安装

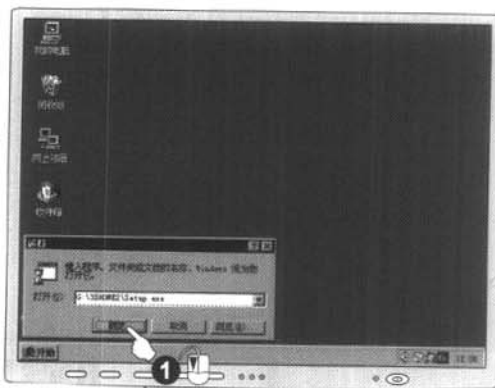
按以下步骤从光盘安装应用程序



1 浏览光盘并选择3D Home2



2 运行Setup程序



3 确认安装

3D Home Architect 的安装

3D Home Architect

3天跨入

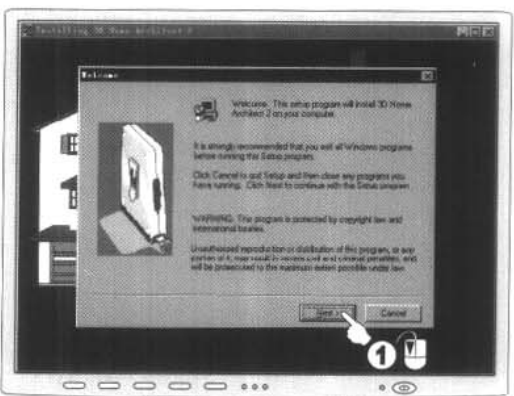
电脑软件全屏幕导学丛书



3D Home Architect 的安装



4 装入安装向导



5 确认



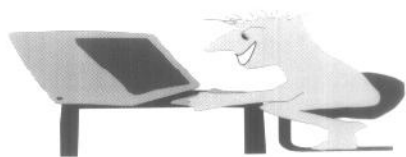
6 安装进行中



今天您首先做热身并掌握最基本的典型操作

3D Home Architect 第一天

基本操作

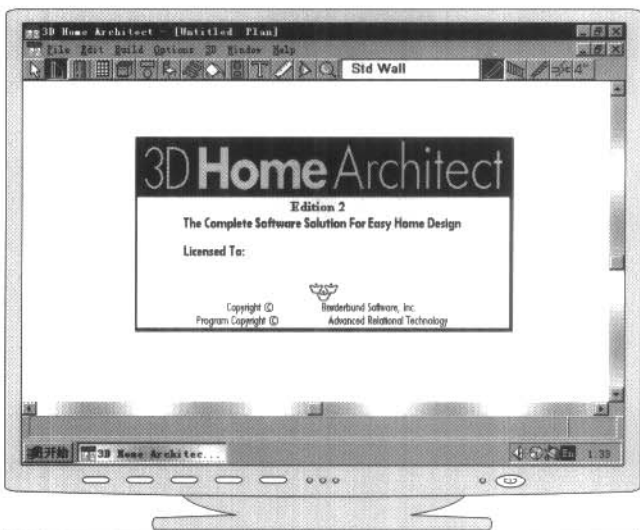


3D Home 2.0



01 进入3D Home Architect 应用程序

01



02 欢迎窗口

02

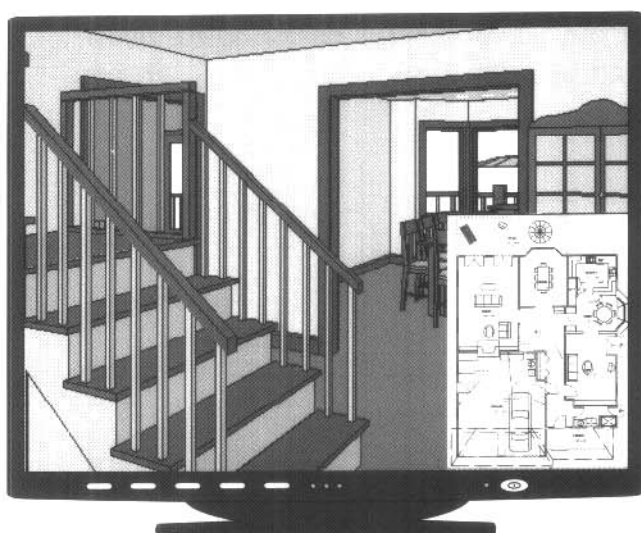


03 打开文件

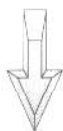
03



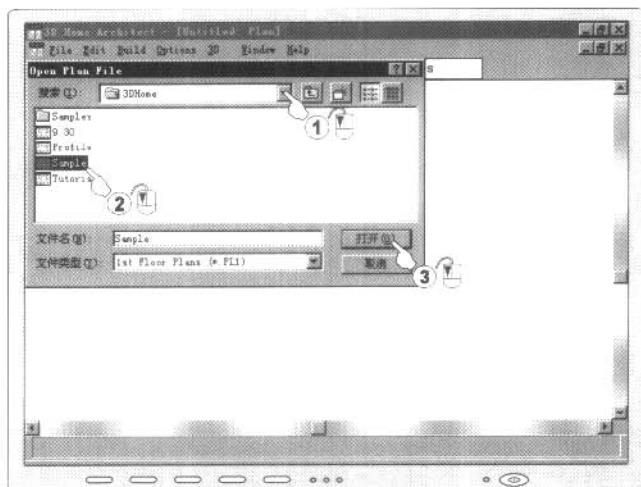
A



A 按以下步骤将您对该软件迅速产生良好感觉



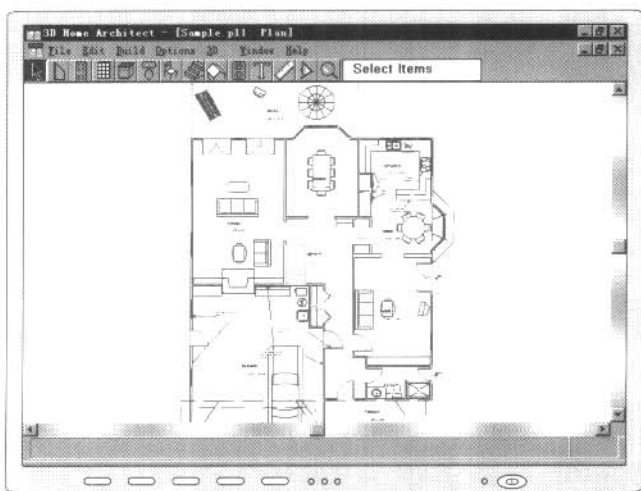
01



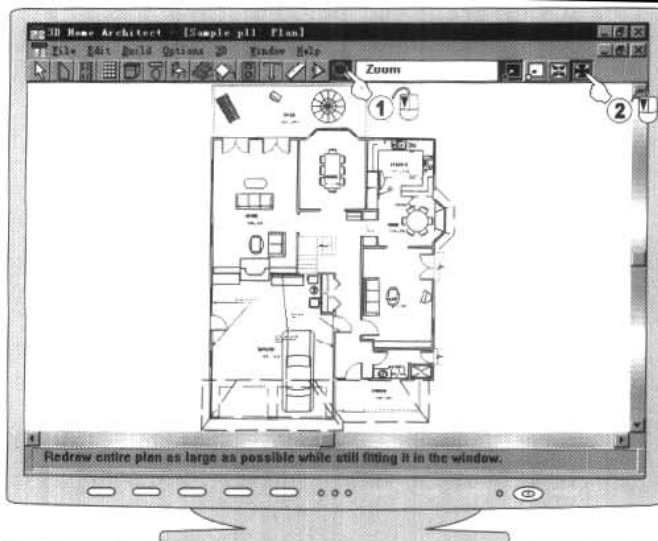
01 选择3D Home Architect 中的示范文件



02

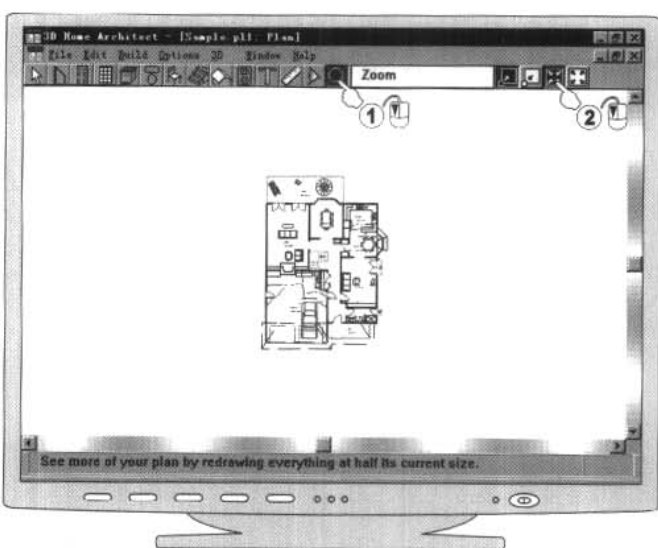


02 已打开的文件



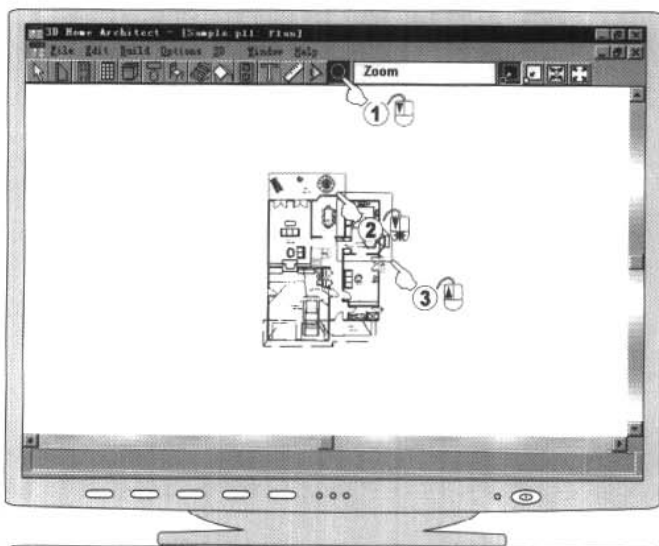
03 选择屏幕缩放方式

03



04 选择屏幕缩放方式

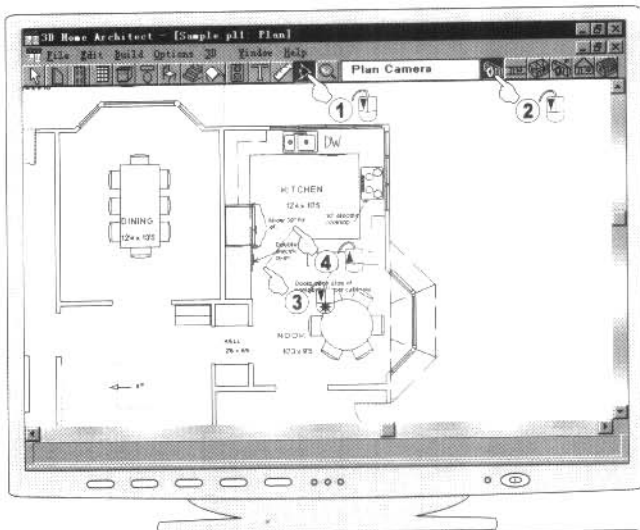
04



05 框选屏幕放大

05

06



06 选择透视类型及方位



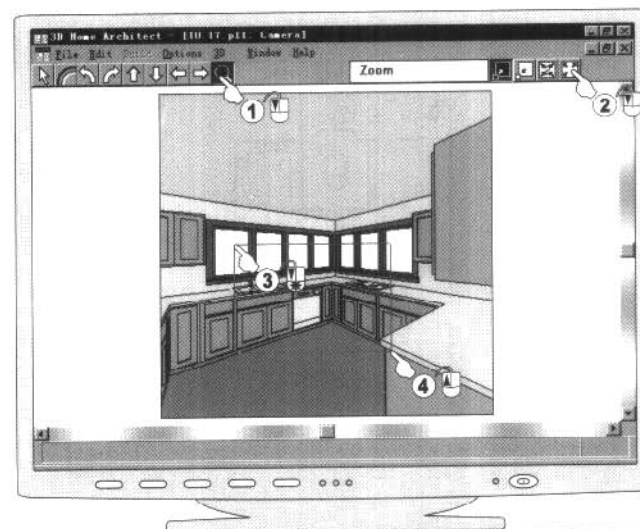
07



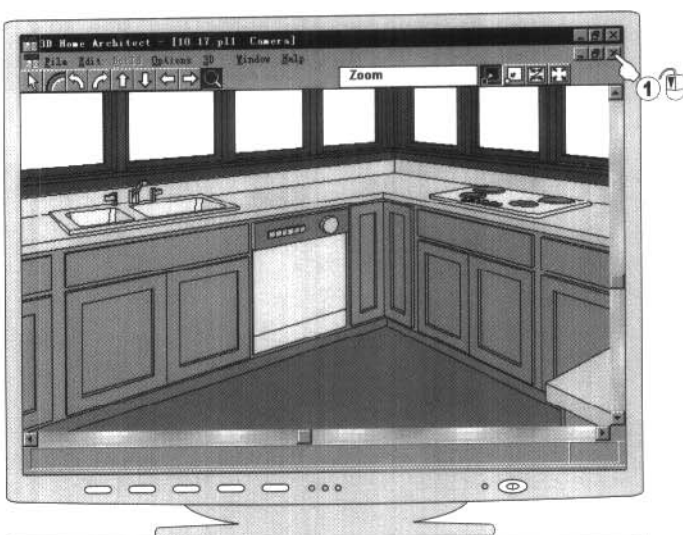
07 透视结果



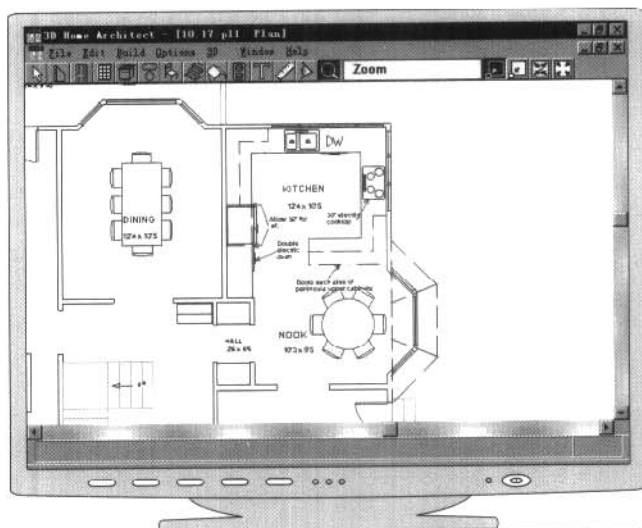
08



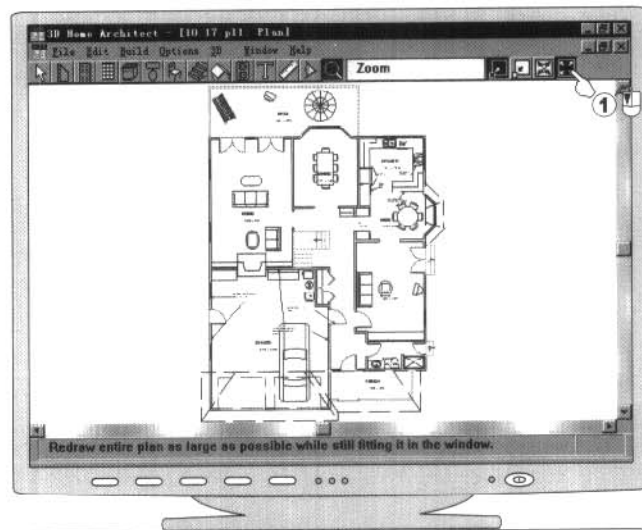
08 框选放大区域



09 框选放大结果



10 返回平面图



11 选择屏幕缩放方式

09

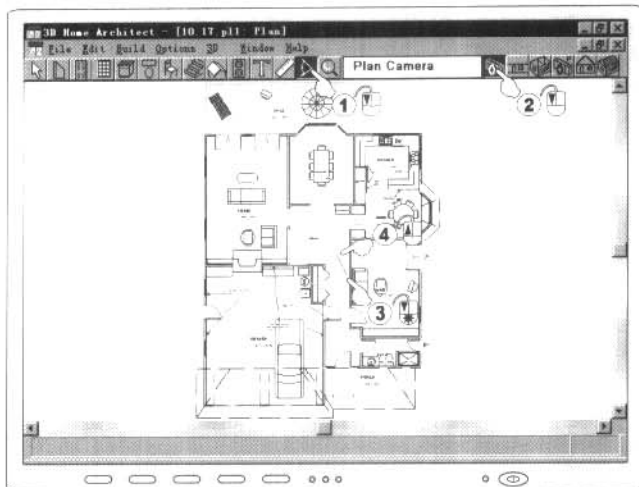


10

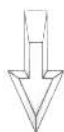


11

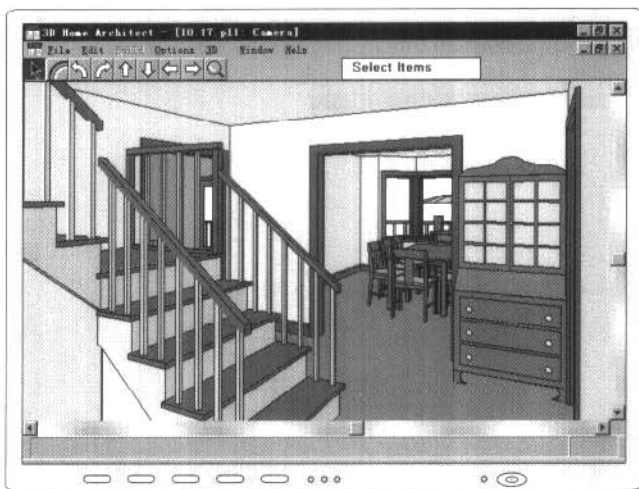
12



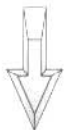
12 选择透视类型及方位



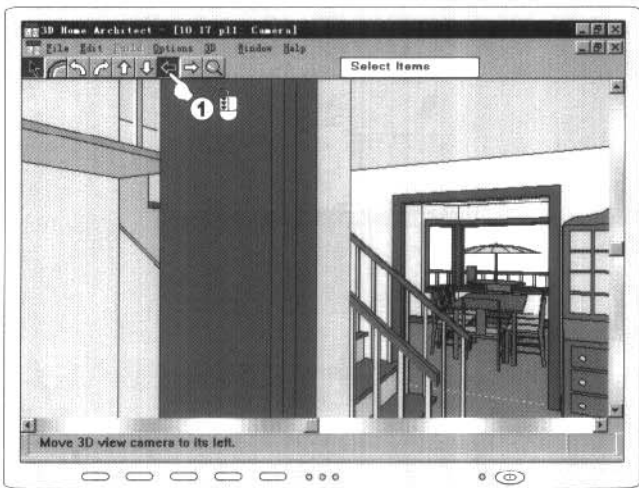
13



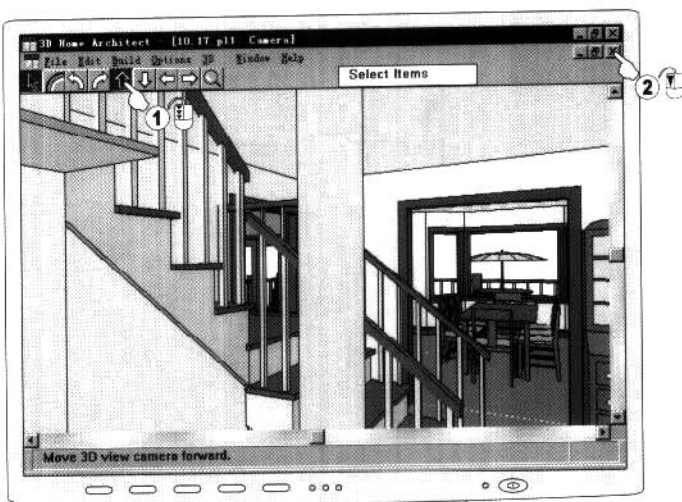
13 透视结果



14

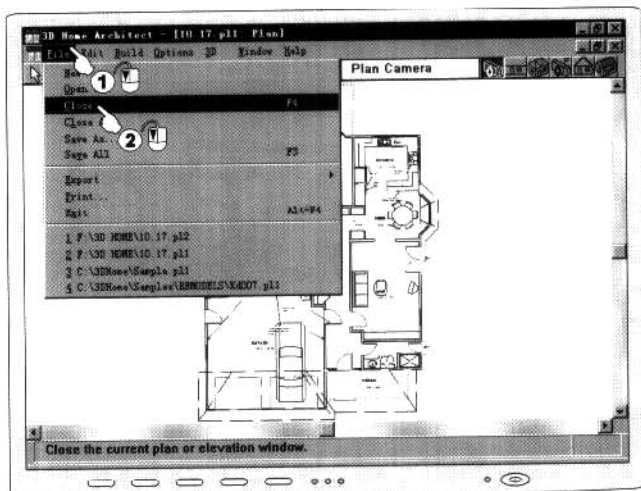


14 调整透视角度



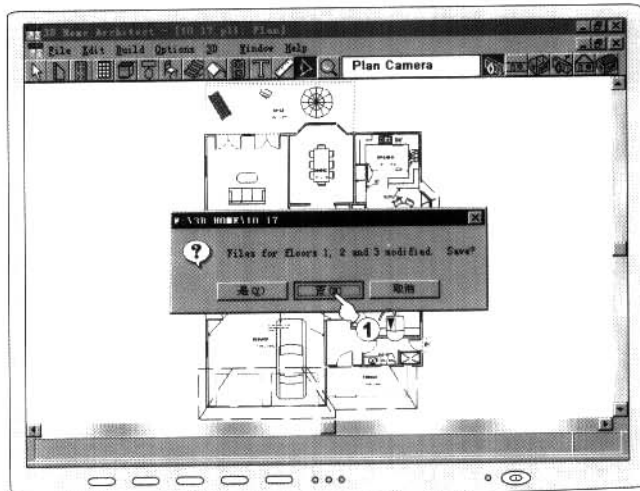
15 调整透视角度

15



16 文件退出

16

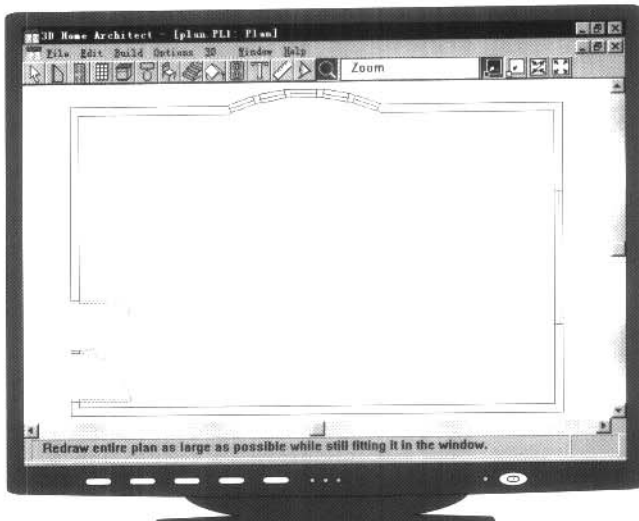


17 确认不保存所做修改

17



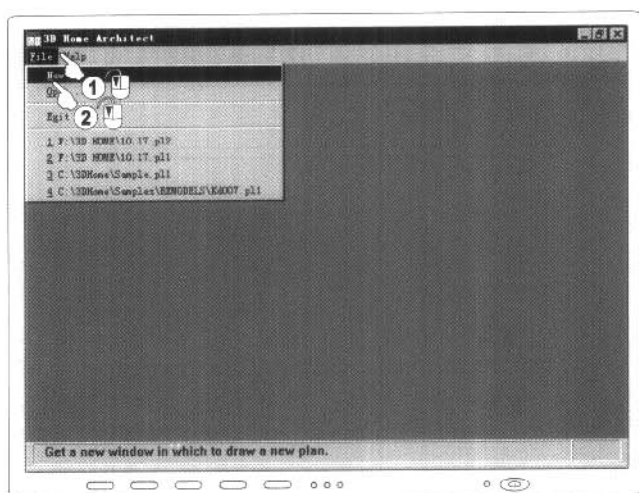
B



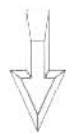
B 按以下步骤您将学会如上简单墙体及门窗的绘制方法



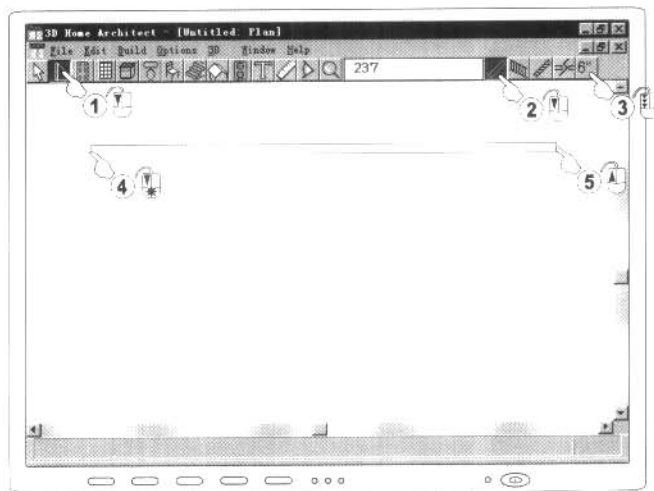
01



01 建新文件



02



02 选择墙体厚度并拖动绘制墙体