

世界经典建筑设计丛书

办公建筑


韩国 A&C 出版社 著

北京科学技术出版社

世界经典建筑设计丛书

办公建筑

韩国 A&C 出版社 著

 北京科学技术出版社

Copyright © A&C Publishing Co., Ltd.

All rights reserved.

Chinese simplified translation copyright Beijing Science and Technology Publishing Co., Ltd.

图书在版编目 (CIP) 数据

办公建筑 / 韩国 A&C 出版社著 ; 北京科学技术出版社译. — 北京 : 北京科学技术出版社, 2019. 1

(世界经典建筑设计丛书)

书名原文: Office Building

ISBN 978-7-5304-9392-2

I. ①办… II. ①韩… ②北… III. ①办公建筑—建筑设计—作品集—世界—现代 IV. ① TU243

中国版本图书馆 CIP 数据核字 (2018) 第 063373 号

世界经典建筑设计丛书·办公建筑

作 者: 韩国建筑世界出版社

策划编辑: 陈 伟

责任编辑: 王 晖

封面设计: 芒 果

责任印制: 张 良

出 版 人: 曾庆宇

出版发行: 北京科学技术出版社

社 址: 北京西直门南大街 16 号

邮政编码: 100035

电话传真: 0086-10-66135495 (总编室) 0086-10-66113227 (发行部)

0086-10-66161952 (发行部传真)

网 址: www.bkydw.cn

电子信箱: bjkj@bjkjpress.com

经 销: 新华书店

印 刷: 北京捷迅佳彩印刷有限公司

开 本: 920mm×1260mm 1/32

字 数: 237 千字

印 张: 8.5

版 次: 2019 年 1 月第 1 版

印 次: 2019 年 1 月第 1 次印刷

ISBN 978-7-5304-9392-2/T·969

定 价: 138.00 元



京科版图书, 版权所有, 侵权必究。
京科版图书, 印装差错, 负责退换。



>>CONTENTS

办公建筑

KNHC GWANGJU JEONNAM

分公司办公室

TOMOON Engineering & Architects Universe-
Top Engineering & Architects
UNSGANGDOONG建筑公司_006

KNHC DAEGU GYEONGBUK

分公司办公室

WONYANG Architectural Design Group_020

文化资源中心

WONYANG Architectural Design Group_036

WOONGJIN THINKBIG

Kim in-cheul ARCHIUM Architect_050

DMC办公楼 (TRUtec)

Barkow Leibinger Architects
CHANGLO Architects_072

数字奇异空间

HEERIM Architects & Planners_084

KORLOY HOLYSTAR 大楼

MANO建筑公司_098

B2Y办公室

Y SPACE_110

JEOLLANAM-DO

政府办公室

G.S.建筑公司 Kim Hyunchul_120

SEOUL 邮政中心 办公室 (SCPO)

SPACEGROUP HEERIM Architects & Planners
HANGIL Architects & Engineers
DeStefano Keating Partners有限公司_134

MERITZ 火灾海上 保险公司大楼

SHINHAN Architects & Engineers KEATING/
KHANG LLP_146

TAEYOUNG YEOUIDO

大楼

WONDOSHI建筑集团有限公司_154

大韩民国驻华使馆

KUNWON Architects Planners Engineers_164

ENVISION

Design Pure_170

BLOOMING

休息大厅

VOID planning_180

MAC政府大厦

BAUM建筑工程咨询公司 ARTECH Architects

Kim Hong-il_188

HEERIM Architects & Planners_194

SPACE GROUP_200

多功能市政厅

HEERIM Architects & Planners

Kim Jung-gon_204 KIAHAN Architecture_210

KUN-WON Architects Planners Engineers_216

CHUNGCHEONG

-NAM-DO

议会和办公室

AUM & LEE建筑公司_222

海洋生物资源国立学院

HEERIM Architects & Planners DOSHIN

Architecture_228

GIMPO-YANGCHON

生态中心

YEZU建筑规划公司_236

Idea Image建筑学院_242

NODE建筑规划公司 Lee Han-gi_249

CHEONAN

主题公园建筑群

HAEAHN Architects & Planners

USUN Engineering DAMOOL Architects_254

AUM & LEE 建筑公司 TOWOO

Architects & Engineers_261

DOSHIIN Architecture DONGWOO Architects &

Consultants DS GROUP Architecture_266

世界经典建筑设计丛书

办公建筑

韩国 A&C 出版社 著

 北京科学技术出版社

Copyright © A&C Publishing Co., Ltd.

All rights reserved.

Chinese simplified translation copyright Beijing Science and Technology Publishing Co., Ltd.

图书在版编目 (CIP) 数据

办公建筑 / 韩国 A&C 出版社著 ; 北京科学技术出版社译. — 北京 : 北京科学技术出版社, 2019. 1

(世界经典建筑设计丛书)

书名原文 : Office Building

ISBN 978-7-5304-9392-2

I. ①办… II. ①韩… ②北… III. ①办公建筑—建筑设计—作品集—世界—现代 IV. ① TU243

中国版本图书馆 CIP 数据核字 (2018) 第 063373 号

世界经典建筑设计丛书·办公建筑

作 者 : 韩国建筑世界出版社

策划编辑 : 陈 伟

责任编辑 : 王 晖

封面设计 : 芒 果

责任印制 : 张 良

出 版 人 : 曾庆宇

出版发行 : 北京科学技术出版社

社 址 : 北京西直门南大街 16 号

邮政编码 : 100035

电话传真 : 0086-10-66135495 (总编室) 0086-10-66113227 (发行部)

0086-10-66161952 (发行部传真)

网 址 : www.bkydw.cn

电子信箱 : bjkj@bjkjpress.com

经 销 : 新华书店

印 刷 : 北京捷迅佳彩印刷有限公司

开 本 : 920mm×1260mm 1/32

字 数 : 237 千字

印 张 : 8.5

版 次 : 2019 年 1 月第 1 版

印 次 : 2019 年 1 月第 1 次印刷

ISBN 978-7-5304-9392-2/T·969

定 价 : 138.00 元



京科版图书, 版权所有, 侵权必究。
京科版图书, 印装差错, 负责退换。



>>CONTENTS

办公建筑

KNHC GWANGJU JEONNAM

分公司办公室

TOMOON Engineering & Architects Universe-
Top Engineering & Architects
UNSGDOONG建筑公司_006

KNHC DAEGU GYEONGBUK

分公司办公室

WONYANG Architectural Design Group_020

文化资源中心

WONYANG Architectural Design Group_036

WOONGJIN THINKBIG

Kim in-cheul ARCHIUM Architect_050

DMC办公楼 (TRUTEC)

Barkow Leibinger Architects
CHANGLO Architects_072

数字奇异空间

HEERIM Architects & Planners_084

KORLOY HOLYSTAR 大楼

MANO建筑公司_098

B2Y办公室

Y SPACE_110

JEOLLANAM-DO

政府办公室

G.S.建筑公司 Kim Hyunchul_120

SEOUL 邮政中心 办公室 (SCPO)

SPACEGROUP HEERIM Architects & Planners
HANGIL Architects & Engineers
DeStefano Keating Partners有限公司_134

MERITZ 火灾海上 保险公司大楼

SHINHAN Architects & Engineers KEATING/
KHANG LLP_146

TAEYOUNG YEOUIDO

大楼

WONDOSHI建筑集团有限公司_154

大韩民国驻华使馆

KUNWON Architects Planners Engineers_164

ENVISION

Design Pure_170

BLOOMING

休息大厅

VOID planning_180

MAC政府大厦

BAUM建筑工程咨询公司 ARTECH Architects

Kim Hong-il_188

HEERIM Architects & Planners_194

SPACE GROUP_200

多功能市政厅

HEERIM Architects & Planners

Kim Jung-gon_204 KIAHAN Architecture_210

KUN-WON Architects Planners Engineers_216

CHUNGCHEONG

-NAM-DO

议会和办公室

AUM & LEE建筑公司_222

海洋生物资源国立学院

HEERIM Architects & Planners DOSHIN

Architecture_228

GIMPO-YANGCHON

生态中心

YEZU建筑规划公司_236

Idea Image建筑学院_242

NODE建筑规划公司 Lee Han-gi_249

CHEONAN

主题公园建筑群

HAEAHN Architects & Planners

USUN Engineering DAMOOL Architects_254

AUM & LEE 建筑公司 TOWOO

Architects & Engineers_261

DOSHIIN Architecture DONGWOO Architects &

Consultants DS GROUP Architecture_266



>> OFFICE

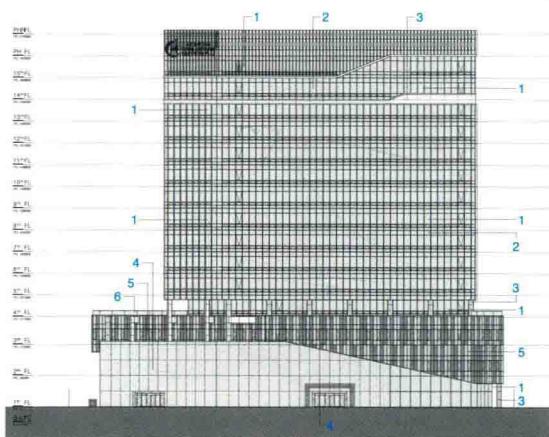
GWANGJU JEONNAM BRANCH OFFICE OF KNHC

Location Chipyeong-dong, Seo-gu, Gwangju, Korea Site Attribute Central Commerce, Fire-Prevention, District Unit Plan Site Area 4,419.10m² Building Area 2,859.26m² Total Floor Area 29,701.55m² Building Coverage Ratio 64.70% Floor Area Ratio 429.41% Building Scope B3-15F Structure RC, Steel Exterior Finish T24 Pair Glass, P.F.W, Aluminium Sheet, Granite, Exposed Concrete Architecture Design Choi Ki-chul, Han Nam-soo | TOMOON Engineering & Architects + Oh Kum-yeol | Universe-Top Engineering & Architects + Jang Yoon-gyoo | UNSANGDOONG Architects Cooperation Design Team Hong Chang-sung, Lee Seon-jeong, Choi Sang-ik, Jo Dong-ho, Choi Yun-sang Client Korea National Housing Corporation Photograph TOMOON Engineering & Architects

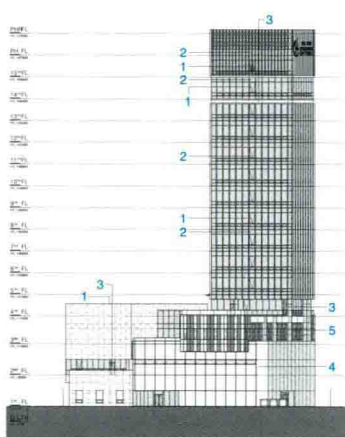
The office of the Korea National Housing Corporation in Gwangju Jeonnam was expected to play a symbolic role as a connector of the local society for housing complexes, commercial facilities, parks, public facilities and so on. The focus of the plan was expanded to a plan containing openness to the citizens, environment-friendliness, differentiated elevation and active eco-energy system with this symbolism. Light Band expressed the image of the office in Gwangju, which is called as light county, and scenic light emphasized the function of light that was involved in the construction program. The office built in an unique way with its own style has an easy access from tourism spots and the 20m-width road in front of it to be a landmark in that business area. The lower part including a square and an exhibition all was planned to be a space for the local society and external and internal squares were directly connected to each other to support the structure. The representative factor for the connected external and internal squares is two-storied open space that was processed with glass curtain wall through P.F.W construction method and water space and green landscape flows naturally through the inside and outside of the building. The elevation for business area was planned by using a vertical louver so that radiant heat control is possible for each season, and for the general building plan including natural ventilation, lighting, the top floor garden, the concept of Eco-Energy was introduced aiming to offer an business area with high efficiency. About the internal path of flow, a space to look down was planned and also a sky park in connection with a park and a broad outlook created an open atmosphere. Gwangju Jeonnam branch office of Korea National Housing Corporation, designed based on this symbolism, will give urbane infra structures and events and play a role as a connector with the local society.



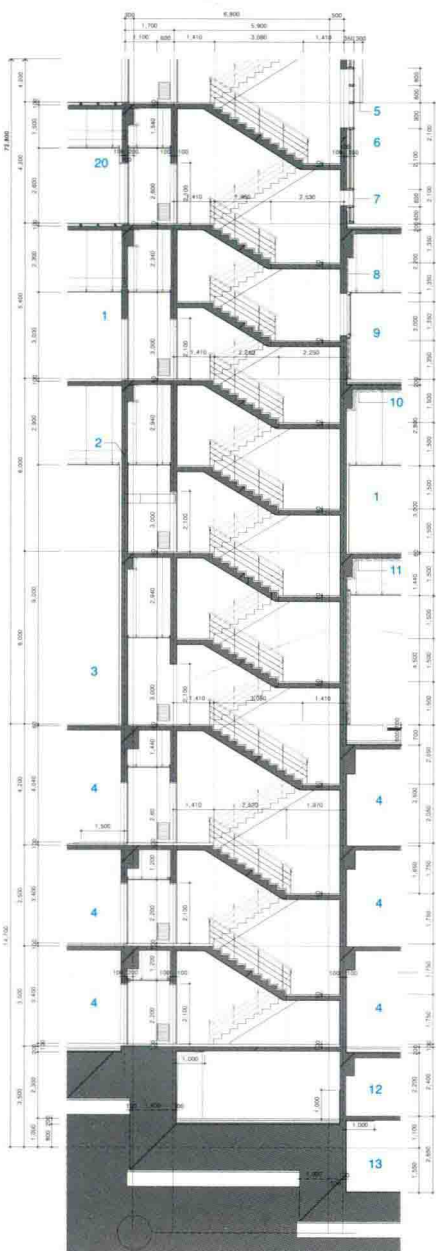
- 1 T24 COLOR LOW-E PAIRED GLASS(ONE-SIDE HALF TEMPERED)
- 2 T24 COLOR LOW-E PAIRED GLASS(DOUBLE-SIDES HALF TEMPERED)
- 3 T3 ALUMINUM SHEET
- 4 T12 CLEAR TEMPERED GLASS (P.F.W SYSTEM)
- 5 T24 COLOR LOW-E PAIRED GLASS (ONE-SIDE AND DOUBLE SIDES HALF TEMPERED)
- 6 T12 TEMPERED GLASS



FRONT ELEVATION



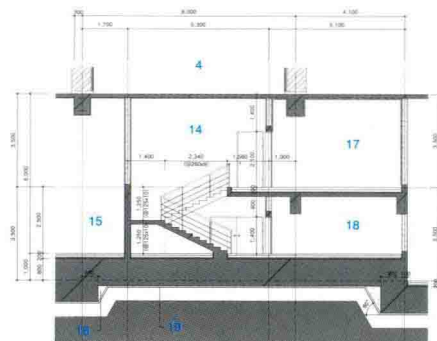
LEFT ELEVATION



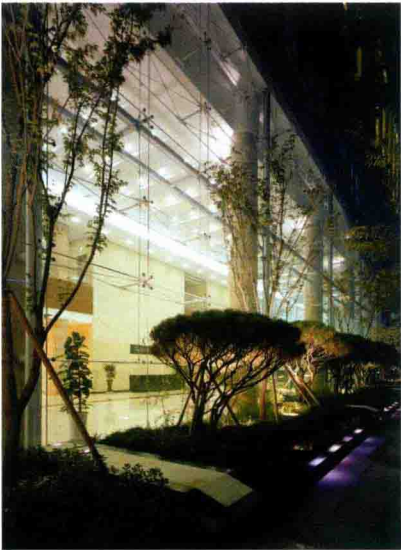
STAIR CROSS SECTION (LOW-RISE)



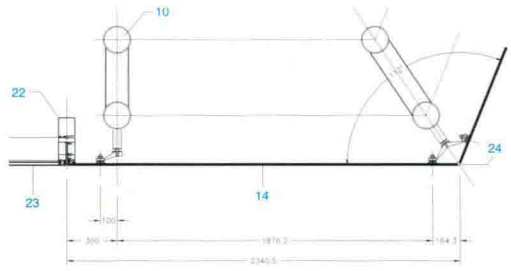
- 1 CORRIDOR
- 2 S.T RETAINING WALL (OPEN 300X600)
- 3 PUBLIC INFORMATION EXHIBITION HALL
- 4 UNDERGROUND PARKING LOT
- 5 ALUMINUM CAP
- 6 ROOF GARDEN
- 7 T24 COLOR LOW-E PAIRED GLASS (ONE-SIDE HALF TEMPERED)
- 8 T60 GLASSWOOL
- 9 OUTDOOR DECK
- 10 T105 HEAT INSULATION
- 11 LIGHT GAUGE STEEL CEILING RIB / ALUMINUM CEILING PANEL
- 12 HEAVY WATER EQUIPMENTS (MANAGEMENT)
- 13 HEAVY WATER TREATMENT FACILITY
- 14 STAIRWAY ROOM
- 15 ELECTRONIC ROOM
- 16 LEVELING CONCRETE INFILLING
- 17 FAN ROOM
- 18 FIRE EXTINGUISHING GAS ROOM
- 19 T50 LEVELING CONCRETE / T0.03 P.E. FILM FOLDS / CORDLE STONE COMPACTION (CIVIL ENGINEERING WORK)
- 20 GLASS SETTING BLOCK @ QUARTER LOCATION



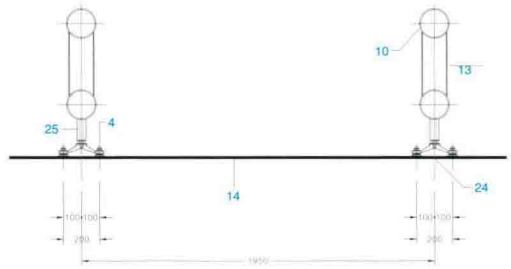
B3 STAIR ROOM SECTION



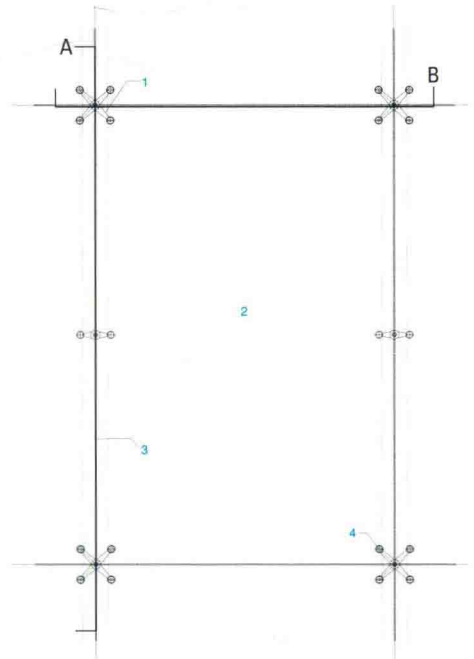
Night view of the lower exterior



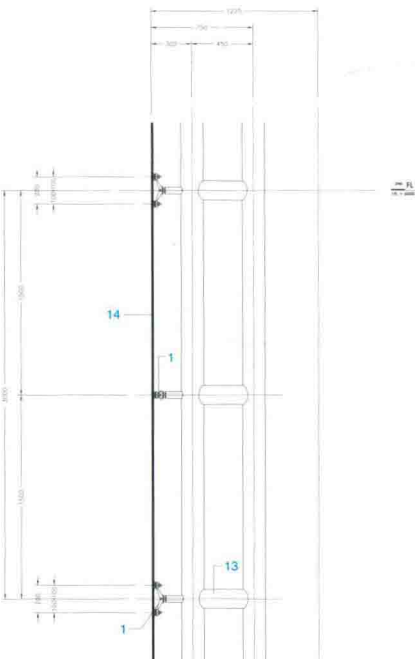
STL STRUCTURE MODULE



SECTION B



GLASS CURTAIN WALL PLAN

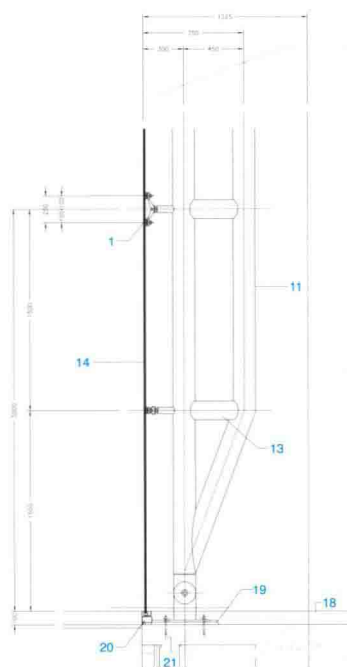


SECTION A

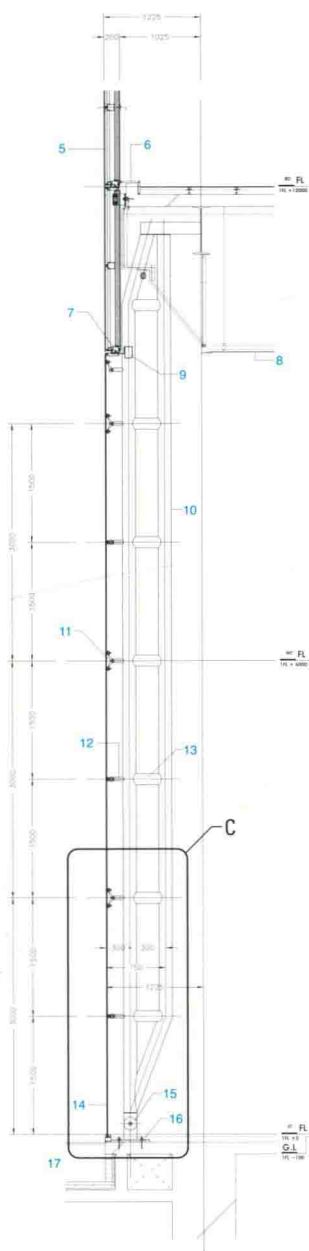


Night view of the upper exterior

- 1 S/STL SPIDER BRACKET
- 2 T12, TEMPERED GLASS ON ELEVATION
- 3 FIELD SEAL W/STRUCTURAL SILICONE SEALANT ON ELEVATION
- 4 POINT FIXING WALL SYSTEM BOLT
- 5 T3, ALUM. PANEL, ALCAN
- 6 T1.5, STAINLESS STL. PLATE
- 7 ANCHOR CLIP, ANGLE, 170X90XT8, 150LG Ø650 O.C
- 8 CEILING FINISH
- 9 STL. TUBE, 150X100XT3, MOMENT CONNECTION
- 10 STL. TRUSS FOR POINT FIXING WALL
- 11 165.20IAXT10, PVDF FINISH
- 12 165.20IAXT10, STL. ROUND PIPE
- 13 500IA, STL. COUPLER
- 14 139.80IAXT4.5 STL. ROUND PIPE
- 15 T12, TEMPERED GLASS
- 16 300IA, GALV. STL. PIN
- 17 STL. BASE PLATE, 490X490XT15
- 18 2-STL. PLATE, T12
- 19 FLOOR FINISH
- 20 GROUTING MORTAR
- 21 BREAK FORMED STS FRAMING, CONT
- 22 M20 CHEMICAL ANCHOR 4NDS PER EACH CLIP
- 23 EXTRUDED ALUM. REINFORCEMENT TUBE 120X100XT3
- 24 T24 PAIR GLASS
- 25 FIELD SEAL W/STRUCTURAL SILICONE SEALANT
- 26 500IA, STL. COUPLER



DETAIL C



CURTAIN WALL PARTIAL SECTION