

世界经典建筑设计丛书

文化场馆

韩国 A&C 出版社 著

 北京科学技术出版社

世界经典建筑设计丛书

文化场馆

韩国 A&C 出版社 著

 北京科学技术出版社

Copyright © A&C Publishing Co.,Ltd.

All rights reserved.

Chinese simplified translation copyright Beijing Science and Technology Publishing Co.,Ltd.

图书在版编目 (CIP) 数据

文化场馆 / 韩国 A&C 出版社著 ; 北京科学技术出版社译. — 北京 : 北京科学技术出版社, 2019. 1

(世界经典建筑设计丛书)

书名原文 : Cultural Venues

ISBN 978-7-5304-9395-3

I. ①文… II. ①韩… ②北… III. ①文化建筑—建筑设计—作品集—世界—现代 IV. ① TU242

中国版本图书馆 CIP 数据核字 (2018) 第 063380 号

世界经典建筑设计丛书 · 文化场馆

作 者: 韩国 A&C 出版社

策划编辑: 陈 伟

责任编辑: 王 晖

封面设计: 芒 果

责任印制: 张 良

出 版 人: 曾庆宇

出版发行: 北京科学技术出版社

社 址: 北京西直门南大街 16 号

邮政编码: 100035

电话传真: 0086-10-66135495 (总编室) 0086-10-66113227 (发行部)

0086-10-66161952 (发行部传真)

网 址: www.bkydw.cn

电子信箱: bjkj@bjkjpress.com

经 销: 新华书店

印 刷: 北京捷迅佳彩印刷有限公司

开 本: 920mm×1260mm 1/32

字 数: 237 千字

印 张: 8.5

版 次: 2019 年 1 月第 1 版

印 次: 2019 年 1 月第 1 次印刷

ISBN 978-7-5304-9395-3/T · 972

定 价: 138.00 元



京科版图书, 版权所有, 侵权必究。
京科版图书, 印装差错, 负责退换。

>>CONTENTS

文化场馆

NAM

JUNE PAIK艺术中心

KSMS(Schemel Stankovic Ges. Von
Architekten mbH) CHANGJO
建筑公司_006

GYEONGGI

现代美术博物馆

YETAP 建筑公司_022

SPEEDOME

SPACE GROUP

BAUM建筑工程咨询公司_046

GWANGJU美术馆

HEERIM Architects & Planners Universe-Top
Engineering & Architects_066

JEJU APRIL 3RD

和平纪念馆

SPACE GROUP JE-IN Architects &
Engineers_084

CHEONMA美术

中心 YEUNG NAM

大学60周年纪念馆

BEYOND SPACE BSD Architects_100

SONGDO CONVENSA

KPF BAUM建筑工程咨询公司_118

GWACHEON

国家科学博物馆

SAMOO Architects & Engineers

SPACE GROUP Terry Farrell & Partners_130

DOOSAN美术广场

Jang Soon-gak jay is working_140

PRUGIO画廊

Jang Soon-gak jay is working_150

CLAYARCH GIMHAE

博物馆

GNI Architects & Engineers_162

环形画廊

Paiksun设计工作室_176

GWANGJU设计中心

TOMOON Engineering & Architects
Universe-Top Engineering & Architects
UNSANGOONG建筑公司_184

GWANGJIN体育中心 及青年中心

KUNWON Architects Planners Engineers_198

BUCHEON

体育文化中心

HEERIM Architects & Planners_212

KTF画廊 THE ORANGE

B613设计团队_220

YEOJU

世界陶艺日用品展馆

Wallga公司_228

SEOUL表演艺术中心

design camp moonpark dmp_238

漂移的岛屿， HANRIVER 发展计划的复兴

HAEAHN Architecture H公司_248

YOUNGSAN RIVER

国家考古学博物馆

WONYANG Architectural Design Group_254

BAETMURY VILLAGE

文化资源中心

POS-A.C. TODAM建筑公司 Hyun Taik-soo_260

BAUM建筑工程咨询公司_266

世界经典建筑设计丛书

文化场馆

韩国 A&C 出版社 著

 北京科学技术出版社

Copyright © A&C Publishing Co.,Ltd.

All rights reserved.

Chinese simplified translation copyright Beijing Science and Technology Publishing Co.,Ltd.

图书在版编目 (CIP) 数据

文化场馆 / 韩国 A&C 出版社著 ; 北京科学技术出版社译. — 北京 : 北京科学技术出版社, 2019. 1

(世界经典建筑设计丛书)

书名原文: Cultural Venues

ISBN 978-7-5304-9395-3

I. ①文… II. ①韩… ②北… III. ①文化建筑—建筑设计—作品集—世界—现代 IV. ①TU242

中国版本图书馆 CIP 数据核字 (2018) 第 063380 号

世界经典建筑设计丛书·文化场馆

作 者: 韩国 A&C 出版社

策划编辑: 陈 伟

责任编辑: 王 晖

封面设计: 芒 果

责任印制: 张 良

出 版 人: 曾庆宇

出版发行: 北京科学技术出版社

社 址: 北京西直门南大街 16 号

邮政编码: 100035

电话传真: 0086-10-66135495 (总编室) 0086-10-66113227 (发行部)

0086-10-66161952 (发行部传真)

网 址: www.bkydw.cn

电子信箱: bjkj@bjkjpress.com

经 销: 新华书店

印 刷: 北京捷迅佳彩印刷有限公司

开 本: 920mm×1260mm 1/32

字 数: 237 千字

印 张: 8.5

版 次: 2019 年 1 月第 1 版

印 次: 2019 年 1 月第 1 次印刷

ISBN 978-7-5304-9395-3/T·972

定 价: 138.00 元



京科版图书, 版权所有, 侵权必究。
京科版图书, 印装差错, 负责退换。



>>CONTENTS

文化场馆

NAM

JUNE PAIK艺术中心

KSMS(Schemel Stankovic Ges. Von
Architekten mbH) CHANGJO
建筑公司_006

GYEONGGI

现代美术博物馆

YETAP 建筑公司_022

SPEEDOME

SPACE GROUP

BAUM建筑工程咨询公司_046

GWANGJU美术馆

HEERIM Architects & Planners Universe-Top
Engineering & Architects_066

JEJU APRIL 3RD

和平纪念馆

SPACE GROUP JE-IN Architects &
Engineers_084

CHEONMA美术

中心 YEUNG NAM

大学60周年纪念馆

BEYOND SPACE BSD Architects_100

SONGDO CONVENSA

KPF BAUM建筑工程咨询公司_118

GWACHEON

国家科学博物馆

SAMOO Architects & Engineers

SPACE GROUP Terry Farrell & Partners_130

DOOSAN美术广场

Jang Soon-gak jay is working_140

PRUGIO画廊

Jang Soon-gak jay is working_150

CLAYARCH GIMHAE

博物馆

GNI Architects & Engineers_162

环形画廊

Paiksun设计工作室_176

GWANGJU设计中心

TOMOON Engineering & Architects
Universe-Top Engineering & Architects
UNSANGOONG建筑公司_184

GWANGJIN体育中心 及青年中心

KUNWON Architects Planners Engineers_198

BUCHEON

体育文化中心

HEERIM Architects & Planners_212

KTF画廊 THE ORANGE

B613设计团队_220

YEOJU

世界陶艺日用品展馆

Wallga公司_228

SEOUL表演艺术中心

design camp moonpark dmp_238

漂移的岛屿， HANRIVER 发展计划的复兴

HAEAHN Architecture H公司_248

YOUNGSAN RIVER

国家考古学博物馆

WONYANG Architectural Design Group_254

BAETMURY VILLAGE

文化资源中心

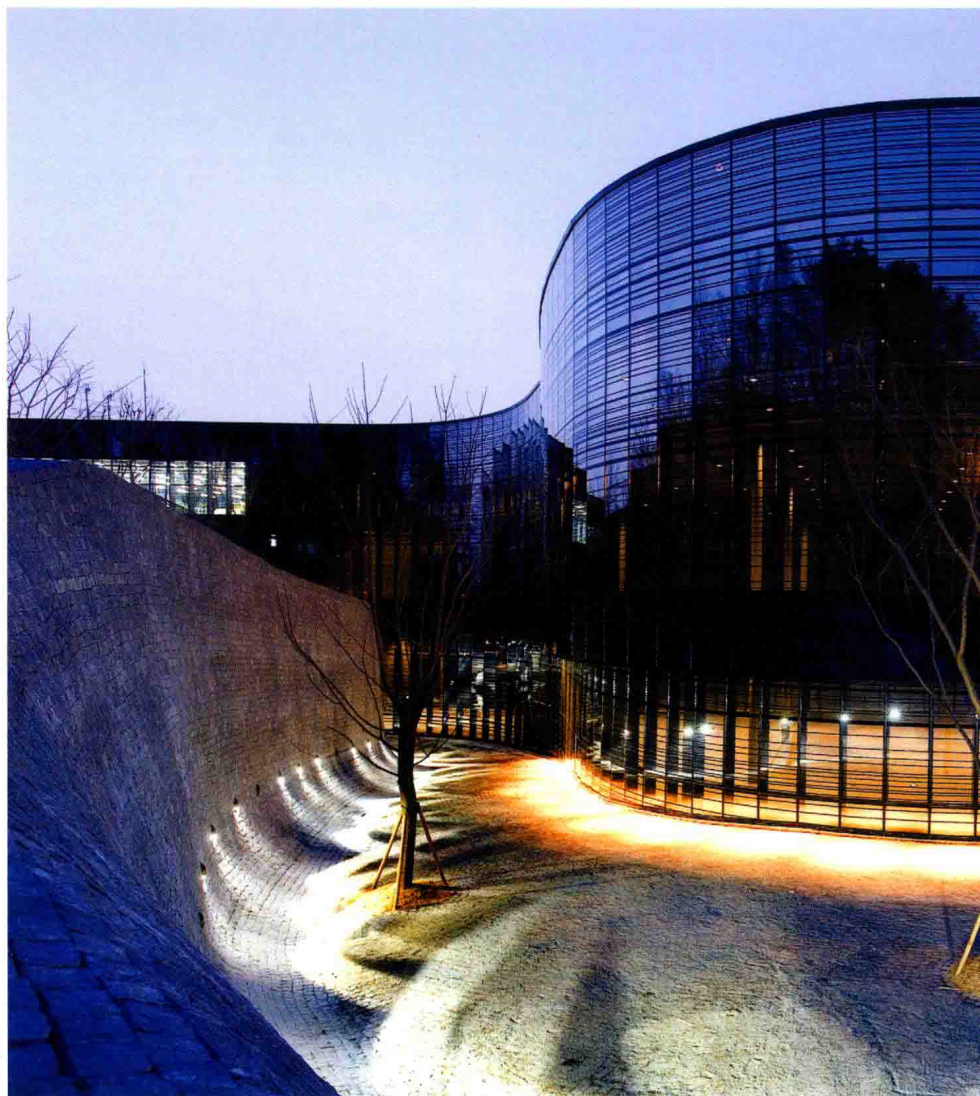
POS-A.C. TODAM建筑公司 Hyun Taik-soo_260

BAUM建筑工程咨询公司_266

>> CULTURE

NAM JUNE PAIK ART CENTER

006



CULTURE
NAM JUNE PAIK ART CENTER



Location Sanggal-dong, Giheung-gu, Yongin-si, Gyeonggi-do, Korea Site Area 69,358m²
 Building Area 1,857.21m² Total Floor Area 5,605.09m² Landscape Area
 1,068.90m²(17.42%) Building Coverage Ratio 9.51% Floor Area Ratio 16.68%
 Building Scope B2-3F Structure RC, Steel Design Period 2004.9-2006.3 Construction
 Period 2006.8-2008.2 Exterior Finish Curtain Wall with Silk Screen Pattern Interior
 Finish Seal Hard, Wood, Carpet Tile, Expanded Metal Architecture Design Kirsten
 Schemel, Marina Stankovic | KSMS(Schemel Stankovic Ges. Von Architekten mbH) + Kim
 Byung-hyun | CHANGJO Architects Inc. Design Team KSMS_Tobias Jortzick / CHANGJO_
 Lee Kang-woo, Choi Kyoung-soo, Ahn Sung-jin, Park Bong-joon, Choi Ha-youn, Lee Jae-woon
 Construction HYUNDAI Engineering & Construction Co., Ltd. Client Gyeonggi Cultural
 Foundation Photographer Lee Ki-hwan





General view of facade



SITE PLAN



Terrace in front of cafeteria

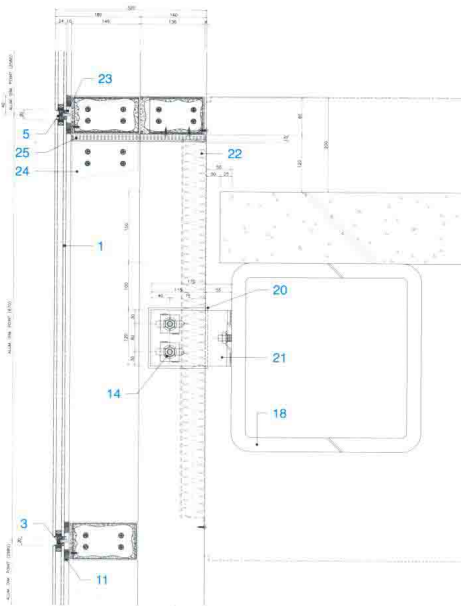
PLEASURES OF AN ART EXPERIENCE We estimate the concept of the Nam June Paik(NJP) Art Center as a contribution to his work. The most fascinating aspect in the work of Nam June Paik's is it's permanent progress and the continuous inventive evolution. This latent openness and permanent changing is the basis for our idea of an NJP Art center. The architectural space should be a continuation of something of the specifics and qualities of the site and the global spread exhibition/worksppheres of the cultural nomad Nam June Paik. We merely think of the Art center as an object and prefer thinking of it as an instrument, something to use and to be creative with, as a curator, an artist and as a visitor. Therefore the architectural instrument should have optimum spatial - structural potentials, which are extremely open and flowing.

PLEASURES OF A PLACE We don't want a kind of hierarchical linear space and imagine a matrix with spatial complexity to be filled with endless combinations of themes, function by the curators, with artworks, installations, environments, performances by the artists and with varying experiences by the visitors. That structure is the search for a form of pleasure of an art experience. We consider the context of the art center-site as a landscape comparable in a sense to such places like 'The central park, N.Y.', 'Skeppsholmen, Stockholm', 'Tiergarten/

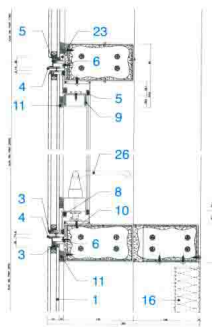
Kulturforum, Berlin', parks with cultural institutions embedded in or sauntering a centered green area, which is almost totally enclosed by buildings. It seems as if the extension of the urban zone is planned to surround the park, so that it's refining, recreational and atmospheric function and meaning for residential's and future visitors will grow. Therefore we are interesting in defining the art center not as a building but as a landscape, a constitutional new part of the park with landscapelike horizontal dimensions, fieldlike circulation and forestlike light and shadows. These characteristics and atmospheres of space are the search for a form of pleasure of a place.

SITE We extend the whole given program horizontally all over the site respecting the edge of the forest with the beginning of the pine trees on a level of about 77m. This forest edge becomes the precise interface between the natural and the artificial landscape, the forest and the art center.

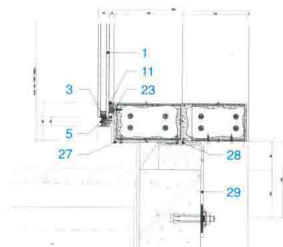
THE VISITORS DISCOVERING AND PLAYING THEMSELVES We are offering a landscape-dimensioned interior space which brims with the art of Nam June Paik and the curious visitors and their activities. People can freely select, discover and explore their own experience. This is a place that children, elderly, everybody can approach cheerfully. Text by KSMS



FACADE VERTICAL SECTION

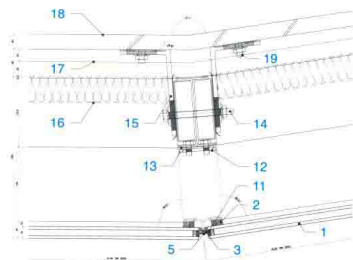
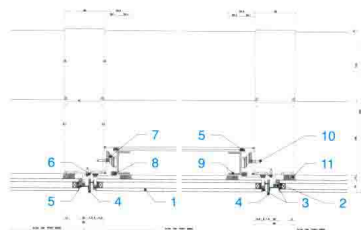


FACADE VERTICAL SECTION

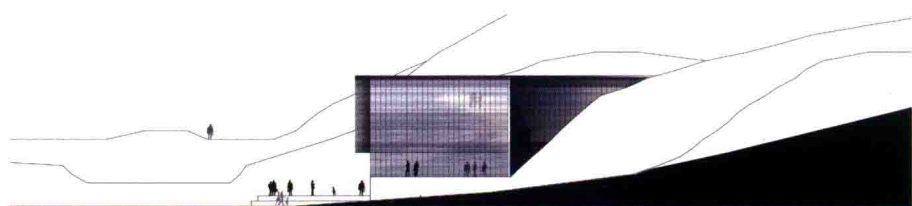


FACADE VERTICAL SECTION

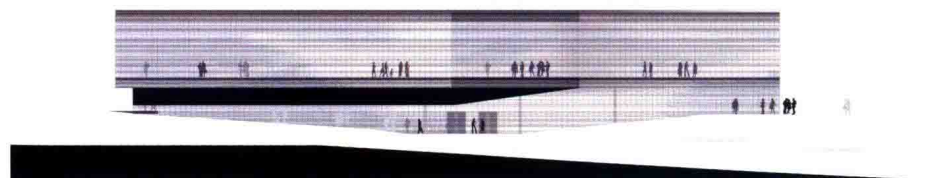
- 1 T24 PAIR GLASS
- 2 STRUCTURAL SILICONE SEALANT
- 3 GLAZING SEALANT ON BACK-UP SPONGE
- 4 AL ANGLE 3/4X3/15TI POLYAMID GASKET
- 5 SANTOPRENE GASKET CONT. BLACK COLOR FINISH
- 6 1.5T BUTYLENE TAPE
- 7 STAINLESS STEEL 4-BAR ARM @ 2EA / UNIT NATURAL COLOR FINISH
- 8 POLYURETHANE THERMAL BAR CONT. BLACK COLOR FINISH
- 9 U-43X25X2T AL. SHEET(M/F)
- 10 Ø4X15LG PH TR HD SCREW @ 450MM DR 2EA /SPAN
- 11 STRUCTURAL GLAZING SEALANT ON BACK-UP BOND TAPE
- 12 70X300X6T ST'L PLATE @1EA / 1500MM
- 13 T1 VINYL SHEET
- 14 M12X120LG HEX-HD CAP BOLT&NUT. W/ WASHER @2EA / ST'L BRACKET ST'L GALV. FINISH
- 15 170X100X9TX250LG ST'L BRACKET @ 2EA / ALUM. MULLION ONLY ST'L GALV. FINISH / T1 VINYL SHEET
- 16 34KX50T INSULATION
- 17 SLAB END LIDE
- 18 400X400X30T ST'L PIPE
- 19 M12X50LG BOLT&NUTS
- 20 T1.0 VINYL SHEET @ 1EA / ST'L BRACKET ST'L GALV. FINISH
- 21 280X100X9TX120LG ST'L BRACKET @ 2 EA/ ALUM. MULLION ONLY ST'L GALV. FINISH
- 22 T2 AL-SHEET / 32KX50T INSULATION
- 23 GLASS SETTING BLOCK @ 1/8 POINT 2 EA/ SPAN
- 24 T3.0 ALUM. SHEET SLEEVE L=150MM MULLION FINISH @ 1EA / EXPENSION JOINT
- 25 ALUM. EXPENSION JOINT @ 1EA / SLAB W/ SILICONE SEALANT
- 26 MULTI LOCK HANDLE @ 1 EA/UNIT
- 27 T1.0 VINYL SHEET @ 1EA-ST'L PLATE NATURAL COLOR FINISH
- 28 200X100X5TX100LG ST'L BRACKET @ 1EA / ALUM. MULLION ST'L GALV. FINISH
- 29 M12X100LG SET ANCHOR @ 1EA / ST'L BRACKET ST'L GALV. FINISH



FACADE HORIZONTAL SECTION



WEST ELEVATION



NORTH ELEVATION