

跨世纪

中国美术家协会会员 ● 精品画库

刘文华

Liu Wenhua

国画作品精选



中国美术家协会

中国美术分类全集总编辑出版委员会

辽宁美术出版社



印制单位 辽宁美术印刷厂

印制总监 吴晓玲

郝云峰

技术监制 孙 健

工艺监制 陈成铁

刘 莉

制版监制 王清国

李国珊

印刷监制 杨仁政

中国·辽宁美术出版社 地址:沈阳市和平区民族北街29号 邮编:110001

外联工作室电话:(024)23418906 传真:(024)23835371

中国·辽宁美术印刷厂 地址:沈阳市皇姑区北陵大街17号

电话:(024)86861355 传真:(024)86864127 邮编:110032

跨 世 纪

J22

中国美术家协会会员

COLLECTIONS OF FINE WORKS OF ART

精品画库

刘文华国画作品精选

中国美术家协会
中国美术分类全集总编辑出版委员会
辽宁美术出版社

71.6



《跨世纪中国美术家协会会员●精品画库》

总主编单位

中国美术家协会●中国美术分类全集总编辑出版委员会●辽宁美术出版社

总编辑出版委员会成员

许力以 靳尚谊
刘大为 李中贵
叶毓中 王春立
金毓清 胡明之
卢禹舜 王恩吉
赵敏 王天荣
郜宗远 程大利
吴成槐 王秋
杨纯如 林文碧
栾祿璋 李秀忠
刘吉厚

出版总顾问 许力以

艺术总顾问 靳尚谊

总 主 编 刘大为
赵敏
吴成槐
王秋
李中贵

总 编 审 吴成槐
王秋

总 策 划 刘吉厚

总 体 设 计 刘大吉

PAINTING COLLECTIONS OF
ACCOMPLISHED MEMBERS
OF CHINA ARTISTS ASSOCIATION

《跨世纪中国美术家协会会员·精品画库》，是以区域分卷的形式，大规模地总结和展示我国美术家艺术成果的大型入档书系，也是艺术家以其艺术成就跨越世纪、奉献新纪元的文化参与行为，具有重大的社会影响和深远的历史意义。

《精品画库》将分各省、自治区、直辖市、解放军和海外美术家等卷；各卷由限定名额并达到入选本画库标准的系列个人专集组成。

历史将记录下入选本画库的各位美术家的名字。感谢你们为新世纪留下了宝贵的文化财富。

“Painting Collections of Accomplished Trans-century Members of China Artists Association” is divided into several volumes by region. It aims at summarizing and showing the artistic achievements made by Chinese artists at the end of 20th century and presenting a gift to the new century, which is of great social and historical influence.

The series of books will be divided into volumes according to different provinces, autonomous regions, municipalities directly under the Central Government, PLA units and overseas Chinese artists, each of which is composed of some high-leveled personal painting collections that are carefully chosen from large amount of ones.

The names of artists selected into the series will go down in history. Thank you for your dedicating to the new century a valuable culture wealth.

刘 文 华

艺术简历

刘文华, 1960年生于黑龙江省绥化县。1975年开始从事美术创作活动, 1977年在绥化县文化馆参加工作, 任美术辅导员。1979年加入中国美协黑龙江分会。1985年进修于中央美术学院中国画系。1986年11月加入中国美术家协会, 1989年被选为黑龙江省美协理事。1994年绥化书画院任副院长, 国家二级美术师。

自幼受家庭影响自学绘画, 曾多年寻师访友, 得到诸多先辈画家的指导教诲。由于长期工作和生活在基层, 画有大量生活速写, 并勤奋地进行着中国画创作实践。艺术生命的根须一直深植于丰厚的生活沃土, 艺术表现的功力, 来源于坚韧扎实的艺术实践的磨炼, 作品面貌不断追求着浓郁的生活气息和鲜明的北方地域特色。主要作品有:《农村敬老院》1980年在省展获二等奖, 入选全国二届青年美展;《除夕》1984年入选全国第六届美展;《雾》1989年在省展获一等奖, 入选全国第七届美展;《冬天里的故事》1990年入选第11届亚运会中国体育美展;《秋的韵律》1993年在全国群星美术大展上获优秀作品奖;《兴安猎人》1994年入选全国首届中国画大展;《夙愿》1995年入选全国第八届美展;《鄂伦春人》1997年入选全国中国人物画展。曾参加北京人民大会堂黑龙江议事厅大型壁画《北国风情》创作, 为主笔设计者。

通讯地址: 中国黑龙江省绥化书画院

邮政编码: 152054

电话号码:(0455) 8220197 (宅) 8261158 (办)

Add:Suihua Painting and Calligraphy

Academy, Heilongjiang, P.R.China.

Zip code:152054

Tel:(0455) 8220197(H) 8261158 (O)

BIOGRAPHY

Liu Wenhua, born in 1960 in Heilongjiang, went about artistic creation in 1975 and worked at the local cultural center in 1977. He had a further study in Chinese painting at the Central Academy of Fine Arts in 1985 and became the member of China Artists Association in 1986. He was made the juror of Heilongjiang Artists Association in 1989 and deputy director of Suihua Painting and Calligraphy Academy in 1994.

Affected by his family, he was fond of painting since childhood and has learned from several artists. For years he has created great numbers of sketchings and Chinese paintings by rooted deeply in the life. He has

formed a unique style of his own full of local flavor and artistic appealing. His representative works include Old Folk's Home (second prize at a provincial art exhibition in 1980 and shown at the Second National Art Exhibition for the Young, New Year's Eve shown at the Sixth National Art Exhibition in 1984), Mist (first prize at a provincial art exhibition in 1989 and shown at the Seventh NAE), Story in Winter (shown at China Sports Art Exhibition for Celebrating the Eleventh Asian Games in 1990), Autumn Scenery (excellent-work prize at a national art exhibition in 1993), Hunter (shown at the First National Chinese Painting Exhibition in 1994), A Long Cherished Wish (shown at the Eighth NAE IN 1995), The Orogens (shown at Chinese Painting Exhibition), etc. He was the major designer of a large fresco Scenery in the North for Heilongjiang Hall in the Great Hall of the People.



兴安猎人

Hunters

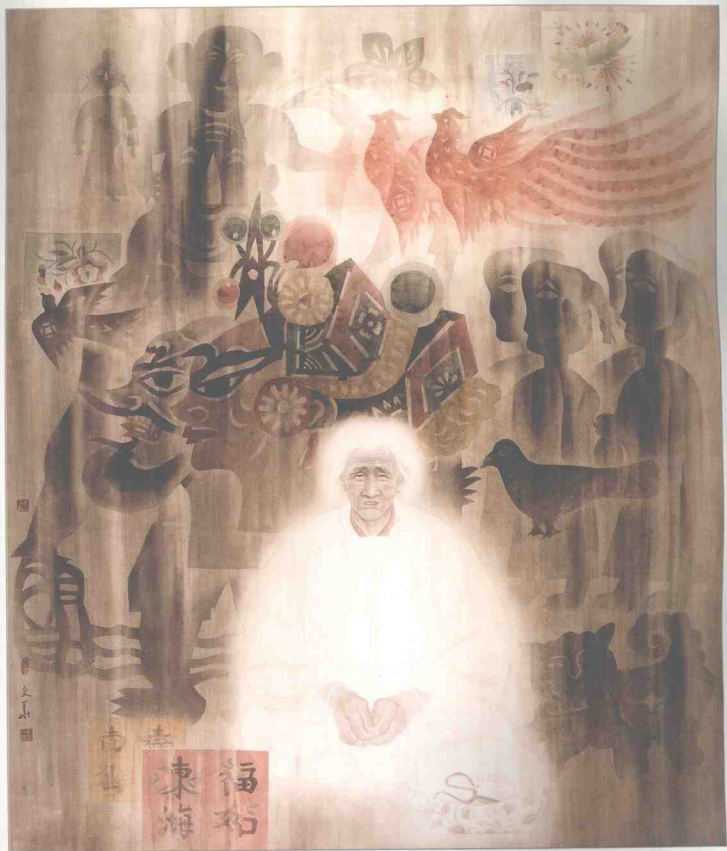
120 × 80cm 1994



我的祖母

My Grandmother

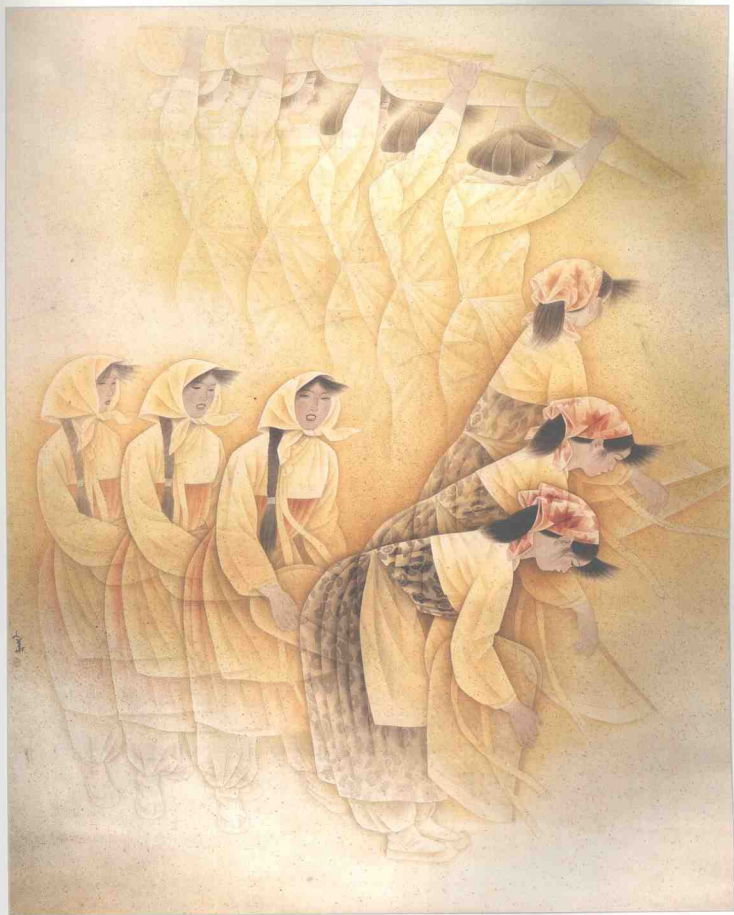
150 × 120cm 1995



秋の韵律

Autumn Scenery

150 × 120cm 1993



秋 思

Thoughts in Autumn

120 × 100cm 1987



秋思
戊辰年秋月
大正五年
畫

窗口

Window

80 × 80cm 1987

