

泓华隆室内设计作品集  
WANG WA LUNG interior design collection

泓华隆室内设计有限公司 / 主编  
深圳市金版文化发展有限公司 / 策划

THE RHYTHM OF INTERIORS  
**居室韵律**

设计先锋 04  
DESIGN PIONEER

南海出版公司



图书在版编目(CIP)数据

居室韵律 / 泓华隆室内设计有限公司 主编. —海口: 南海出版公司, 2005. 1

(设计先锋: 4)

ISBN 7-5442-2982-3

I. 居... II. 泓... III. 住宅—室内装饰—建筑设计—图集 IV. TU241-64

中国版本图书馆CIP数据核字 (2004) 第120862号

SHEJI XIANFENG 04——JUSHI YUNLV  
设计先锋04——居室韵律

---

主 编 泓华隆室内设计有限公司  
策 划 深圳市金版文化发展有限公司  
责任编辑 陈正云 周诗鸿  
封面设计 深圳市金版文化发展有限公司  
出版发行 南海出版公司 电话 (0898) 65350227  
社 址 海口市蓝天路友利园大厦 B 座 3 楼 邮编 570203  
电子信箱 nhcbgs@0898.net  
经 销 新华书店  
印 刷 深圳市彩视印刷有限公司  
开 本 889mm×1194mm 1/12  
印 张 18  
版 次 2005年1月第1版 2005年1月第1次印刷  
书 号 ISBN 7-5442-2982-3  
定 价 198.00元

---

南海版图书 版权所有 盗版必究

如有印刷装订质量问题,请直接与印刷厂联系调换

购书电话: 0755-25839248

Http://www.ch-jinban.com



设计先锋04  
Design pioneer

# 居室韵律

泓华隆室内设计有限公司/主编  
深圳市金版文化发展有限公司/策划

实景拍摄专业版 Professional edition of actual scene photographing

TU241-64  
C136



南海出版公司

序

# 空间力量



文/开彦  
原中国建筑设计院总建筑师  
现中国人居环境委员会主任

房屋永远是生活方式的象征。

在中世纪的欧洲，对于宗教的迷恋使当时的欧洲儿近癫狂。一个骑士可以在颂诗中激动得三次晕倒。所以，当时，尖顶繁复的、具有宗教意味的哥特式建筑一时四处萌生。

但16世纪的意大利并未受到影响，自由奔放的意大利人保留了自己的民风。他们吟诗作赋，召开沙龙，纵然是一个女仆的学识，也可以和一位学者攀谈。在这样的社会环境下，意大利的哥特式建筑很少，即使有，也融入了本土的风格。比如建筑的表面很少装饰，开很少的窗子。百年战争时期的法国，未陷落的城市只有一个，那里流动着大兵、醉汉和农夫，村镇里的贵族也要住茅草房，较好的房子留给孕妇居住，绅士的两条腿都是弯

P r e f a c e

# Space Strength

Author/ Kaiyan

Former chief architect of China Architecture Design Institute; currently holds the position of the director of China Human Inhabitation Environment Committee.

Building is always the symbol of life style.

The people in mid-century Europe were almost crazy for religion. A knight can be touched so much by the ode that fainted three times. Accordingly, the most complicated and religious Gothic construction emerged all round at that time.

Bold and unrestrained Italian in 16 century uninfluenced by this trend and preserved their folkway. They intoned and wrote poems, held Salon; even an uneducated maid can talk with a scholar. Under such social circumstance, there were few Gothic Constructions which melted with local style in

Italy, such as few exterior decoration and few windows. During the period of Hundred Years War, there was only one unoccupied city in France where swarmed soldiers, drunkard and farmers. Even the nobles in the villages had to live in grass cottages and left better houses to pregnant women; always riding horses, legs of gentlemen were bended-social life changed building and vice versa.



The same as in China, whether in historiography, literature or old photographs, since hundreds of years, as the mainstream class, Chinese civilian hadn't resided in good houses. Fane and the Great Wall symbolized power; but the houses of civilians were only conspired with earth and grass-in history, building was the vane of economic life and social life.

Until recent years, Chinese people's consciousness to building and space has been truly awakened. Today, if someone is talking about the buildings, such as gardens, mansions, cities or communal in a tea bar of Shenzhen, no one in the bar notice him, either reading newspapers, drinking tea or the people knocking



曲的，因为总要骑在马上——社会生活改变了房屋，而房屋也改变了社会生活。

中国也一样，几百年来，不论是在史学、文学作品还是老照片中，中国的主流群体——平民，并没有住过太好的房屋。寺院和长城象征着权利，老百姓的房子从来都是用泥和草作建筑材料凑合起来的——历史上，房屋就是经济生活和社会生活的风向标。

中国人对房屋、对空间意识的真正觉醒是近来的事。今天，若在深圳，在茶馆里，一个谈论住什么花园、什么雅居、什么城、什么公社的话题，不管是周围那些一丝不苟看报的人，慢慢吞吞喝茶的人，还是百无聊赖敲打桌面的人，谁也不会抬头瞥他一眼。但要是他说“我的房子是单位分的”，一定会吸引不少艳羡的目光。时代在变，中国人在消费长廊中经历了公房时代、面的时代、呼机时代、手机时代、私车时代、商品房时代之后，不满是现状的人们在进入一个空间设计时代。

在这个时代，他们期望通过空间的自由、自主，从而成为自己的精神贵族。他们努力反抗物质膨胀所带来的人性极端异化，并且试图扭转现状。走在前列的人们提出置疑：当对物质的膜拜超越了心灵的善良与宽容而主宰人们的行为后，人们已经在迷失自己，舍本求末，真正的生活质量是不是正在下降，越往后，越是对自主独享空间的占有。

如果说，北京的天坛隐藏了玄妙的数理与宗教表义，巴黎卢浮宫透明的玻璃金字塔创造了流动空间，香港贝聿铭设计的中国引航大楼体现明快简洁的现代生活，太平山顶上的云霄阁代表了建筑史上的奇迹，如果说这些标志性建筑只是社会生活中几朵奇葩的话，那么，当前中国人在日常的居住中，则更追求房屋空间的情趣、质量、人性化，这是空间设计的时代，空间可以变幻出无穷魔力。

在《泓华隆室内设计集》出版之前，因为工作机缘，笔者已屡次感觉到泓华隆室内设计作品穿梭在居住文化空间中的灵气和独特魅力。早期的深圳豪宅代表——东海花园、百仕达花园都是如此。和泓华隆室内设计总监黄志达、郑树芬相熟已久，黄志达在空间设计方面的理念领先同行。虽然同样是认同样板房设计有促进地产项目的销售，但泓华隆的作品显然更倾向于内在技术性与外在艺术性的合二为一，追求美观和实用的并存。

泓华隆的风格也注定其旗下的样板房设计并不只是一个个花瓶，只能作为简单的展示，而是已经成为楼盘风格与文化的一种再现。更多地运用可以感觉到的光线和影像去表达设计意念，为了强化设计构思也常常使用新材料和新技术，在将真实与想像的空间合二为一这一点上，泓华隆做到了一个极致。

the table wearily. But he can attract admiring look if he said "my house is assigned by our company". Times are changing - Chinese people passed through public house age, microbus age, pager age, mobile age, private car age and commodity house age, and the people unsatisfied with status quo are entering into age of space design.

In such period of times, they expect to become their own moral nobles through the spatial freedom and independence, try to resist the extreme alienation of human nature and try to change the status quo. The people taking the lead raised their questions: dominated by the worship for physical instead of psychological goodness and tolerance, people are losing themselves and abandoning their principal to pursue minor details, whether the living quality is decreasing, and the later in the future, the more possess free and independent space.

If occult mathematics and religion imbedded in the Temple of Heaven in Beijing, the glass pyramid in Palais du Louvre created flowing space; if the China Pilot Building in Hong Kong designed by Beiyuming presents clear and simple modern life, Yunxiao Pavilion on the top of Taiping Mountain represents the miracle in architecture history; if all these symbol constructions are only a few magic flowers in social life, currently Chinese people pursue sentiment, quality and humanization-this is times of space design, space can transform infinite charm.

Before the publication of Honghualong Interior Design Collective, by working, I have felt the nimbus and distinctive soul of Honghualong Interior Design moving in residential culture space. As the early representative of luxurious residential estate in Shenzhen, East Pacific Garden and Sinolink Garden are all the good examples. I am very familiar with design director of Honghualong- Zhengshufen, Huangzhida whose design concepts hold leading position in the field. Although self-identify that the design of sample apartment can promote the estate sales, the works of Honghualong prefer to the combination of technology and art, pursue the combination of beauty and utility.

The style of Honghualong determines that the sample apartment designs are not only vases which only can be displayed but it has become a reproduction of building style and culture. More adopt ray and image that can be felt to express design concept. In order to intensify the design conception, they often adopt new materials and new technology; Honghualong can be excellent on the point of combining reality and a fancy space.





## 泓华隆室内设计有限公司

泓华隆™诚意为阁下提供的服务主要以设计为主，包括空间运用、质量监督、制作等，力求每一客户都能获得满意的效果。

公司设计总监郑树芬、黄志达先生，常常采用中与西、古典与现代、简单与豪华之融合，创出自我风格，让客户深深领会到实用而极具创意的优质设计。

我们深信：理想的设计要突出空间的实用率，结合新材料，将整体气氛发挥得淋漓尽致。在过去10年里，作品中尽情展现了郑树芬、黄志达总监的设计意念，设计主题也呈现多样化，或简约，或时尚，或气派而富有地方色彩，或古典豪华，或荟萃了中西设计手法等，都掌握得恰到好处，创造出别具风格的出众居庭，并不断参与发展商之样板房、会所、大堂的设计。

### WANG WA LUNG Interior design Co., Ltd

WANG WA LUNG sincerely provide the service, including main trial design, spatial practices, quality supervision and tunnel construction etc, and pursue that every customer can get satisfactory results.

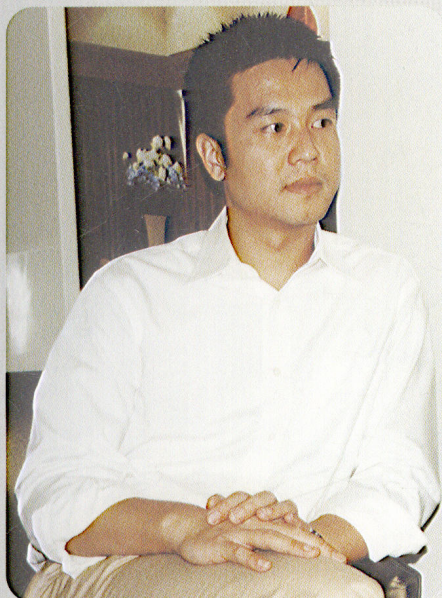
As the design directors of WWL, Zhengshufen and Huangzhida, often utilize the amalgamation of Chinese and western, new and old, simple and luxurious style, create their own style. And make customers deeply comprehend practical and innovative high-quality designs.

We believe deeply that: ideal design must highlight the advantages of space utility rate, and combine with new material to exert completely the entire atmosphere of living rooms. In the past ten years, Mr. Zheng and Huang's design concept displayed in their works. And their design subject is diversified and simple, either fashionable and with local color, or collection of Chinese and western design techniques, or classical luxury, which they can grasp apropos; and create unique, eminent living rooms. And they often participate in the design of sample apartments, chambers and halls.



## Designer introduction

### 设计师 · 简介



#### 黄志达

泓华隆室内设计有限公司创始人之一  
首席室内设计总监

#### RICKY WANG

One of the founder of Honghualong Interior Design Co., Ltd  
Top Interior Design Director

#### 郑树芬

泓华隆室内设计有限公司  
首席室内设计师

#### SIMON CHONG

Top Interior Designer of Honghualong Interior Design Co., Ltd



室内设计千变万化，但最重要的原则必然是以人为本，在利用先进的科学技术改善生活质素之余，亦能使用新颖材料营造特别的效果和气氛，无论设计的风格是前卫时尚，还是古典高雅，都应有个人风格。只有将不同的风格品味和谐地融入室内设计中，才会有历久常新的感觉，而不会令人感到有盲目追求流行时尚的愚昧。成功的室内设计不仅能营造一个实用的空间，而且在气氛营造方面能恰到好处。如：控制自如的灯光效果，比例适当的家具，以及尽显主人的内涵与品位的艺术品——挂画和摆设等，都能表达出整体完美的生活空间。任何设计，都有一定的

在现今社会中，室内的环境对生活和工作都有很大的影响。室内设计是一种艺术，室内设计的精髓是设计师的理念。而这理念源于设计师知识的积累、个人修养和对潮流的追求。

In nowadays society, interior environment have great influence to both living and work. Interior design is a kind of art, the soul of which is designer's concept. And that the concepts come from designer's knowledge accumulation, individual culture and pursuit to new trend.

潮流倾向，如时装及室内设计时下流行的复古风格，色彩鲜艳、图案大胆，20世纪六七十年代常见的线条简单的塑料和金属组合而成的家具，配合新颖设计之建材如洁具、玻璃、仿人造石材，但给人的却是有怀旧情怀的21世纪时尚家居。室内环境只要搭配恰当，融入自己的爱好与个性，或清雅悠闲，或简约朴实，或古典豪华，都能让人享受到赏心悦目的设计成果。

Interior design is ever changing, but the most important technique must be people oriented; utilize advanced science and technology to improve the living quality while adopting novelty materials to build specific effect and atmosphere. Whatever the design style, either avant-courier, fashionable or traditional classical elegance, should have personal style and melt into interior layout with different style and taste to reach the feeling of still as ever, but will not make people feel ignorance of blindly pursuing fashion. Except use space carefully to reach practical and comfortable environment, building atmosphere is also very important factor to the successful interior design. Careful arrangement can express wholly perfect improved living space, such as freely controlled light effect, proportional furniture and artworks presenting completely inner taste like hanging pictures and ornaments; any design have some trends, for instance, fashionable dress and interior design also restore ancient ways popularly at present. By the application of the bold pattern and bright color, the furniture with the common simple plastics lines and metal combination in 1960's and 1970's, and cooperating novelty-design construction material such as sanitary product, glass, the artificial stone material, make people can enjoy nostalgic style 21st century fashionable furniture. Even so, properly arrangements of interior environment with personal taste, no matter elegant and leisurely, simple and plain, classical and luxurious, or application of eastern styles and features, can make people enjoy the pleasing design achievement finally.



# 目 CONTENTS 录

1



- 12 九龙塘沙福道  
Kowloon Tong Suffolk Road
- 18 世纪村“日月府”样板房(三)  
Century Village "Riyue Mansion" sample apartment (three)
- 28 世纪村“王府”样板房(二)  
Century Village "Prince's Residence" sample apartment (two)
- 42 世纪村“王府”样板房(一)  
Century Village "Prince's Residence" sample apartment (one)
- 54 跑马地礼顿山  
Pau Ma Tei, Leighton Hill
- 62 东海花园样板房(四)  
East Pacific Garden sample apartment (four)

Dignity

贵





- 68 东海花园君豪阁  
East Pacific Garden Junhao Pavilion
- 80 罗边臣道辉煌豪园  
Robinson Road Resplendence Luxurious House
- 86 跑马地蓝塘道98号  
98#, Blue Pool Road, Pau Ma Tei
- 88 世纪村“日月府”样板房（一）  
Century Village "Riyue Mansion" sample apartment (one)
- 96 世纪村“王府”样板房（四）  
Century Village "Prince's Residence" sample apartment (four)
- 110 东海花园样板房（二）  
East Pacific Garden sample apartment (two)

# 目 CONTENTS

# 录

2

# 朗

# Brightness



# 目 CONTENTS 录

3



# 怡

## Coziness

- 114 世纪村“日月府”样板房(二)  
Century Village "Riyue Mansion" sample apartment (two)
- 122 东海花园样板房(五)  
East Pacific Garden sample apartment (five)
- 132 浅水湾3号  
3 #, Tsing Shui Wan
- 138 世纪村“王府”样板房(三)  
Century Village "Prince's Residence" sample apartment (three)
- 148 星河国际样板房  
Xinghe International sample apartment
- 162 海怡东方样板房(一)  
BOHO Town sample apartment (one)
- 170 海怡东方样板房(二)  
BOHO Town sample apartment (two)
- 180 坚尼地道帝景阁  
Kennedy Road Empire-view Pavilion





# 韵

## Rhythm

# 目 CONTENTS 录

4

- 184 东海花园样板房(一)  
East Pacific Garden sample apartment (one)
- 188 东海花园样板房(三)  
East Pacific Garden sample apartment (two)
- 196 加列山道塞诗阁  
Mount Kellett Road Saishi Pavilion
- 206 跑马地云地利台  
Pau Ma Tei, Yunbali Terrace
- 208 罗边臣道乐信台(一)  
Robinson Road Lok Shun Terrace (one)
- 210 罗边臣道乐信台(二)  
Robinson Road Lok Shun Terrace (two)
- 212 干德道帝豪阁  
Conduit Road Empire Pavilion





高贵而不烦琐，华丽而不奢靡，在恰到好处之中显示出一种难以掩饰的尊贵与优越，让一股天生的贵族气质欲盖弥彰。

Dignity but not trivial, magnificent but not extravagant, display unconcealed honorable and superiority exactly, and expose the air of natural nobleness completely.

九龙塘沙福道Kowloon Tong Suffolk Road

世纪村“日月府”样板房(三)Century Village "Riyue Mansion" sample apartment (three)

世纪村“王府”样板房(二)Century Village "Prince's Residence" sample apartment (two)

世纪村“王府”样板房(一)Century Village "Prince's Residence" sample apartment (one)

跑马地礼顿山Pau Ma Tei, Leighton Hill

东海花园样板房(四)East Pacific Garden sample apartment (four)



D i g n i t y

贵



Kowloon Tong  
Suffolk Road

九龙塘  
沙福道













