

one  
P E S S I O N

I D E A L S P A C E D E S I G N

理想空间设计书系

美容美发店

中国美术学院美术考级教材



# 美容美发店

理想空间设计书系

TU227.6/C1416

CA Press 编

李 菁 译

福建科学技术出版社

著作权合同登记号：图字13-2004-029

原书名: Beauty Shop

The original edition is published in Korea by CA Press Publishing Inc.

本书经韩国CA Press授权出版、发行

#### 图书在版编目(CIP)数据

美容美发店/韩国CA Press编, 李菁译. -福州: 福建科学技术出版社, 2005.8

(理想空间设计书系)

ISBN 7-5335-2568-X

I. 美... II. ①韩...②李... III. 美容-服务建筑-建筑设计 IV. TU247.6

中国版本图书馆CIP数据核字 (2005) 第015123号

书 名	美容美发店
	理想空间设计书系
作 者	(韩) CA Press
译 者	李 菁
出版发行	福建科学技术出版社 (福州市东水路76号, 邮编350001)
网 址	www.fjstp.com
经 销	各地新华书店
印 刷	深圳中华商务联合印刷有限公司
开 本	635毫米×965毫米 1/8
印 张	30
图 文	235码
版 次	2005年8月第1版
印 次	2005年8月第1次印刷
书 号	ISBN 7-5335-2568-X/TU·121
定 价	198.00元

书中如有印装质量问题, 可直接向本社调换

## 序

本丛书汇集了当今世界室内设计业的经典作品，这些作品方案以实用和创新见长，它们都按其主题加以归类。现在，“室内建筑”不仅仅局限于传统意义上的室内装饰，而且涉及了建筑结构等方面，在一些四五层（或更高）的中小型建筑当中尤为如此，为了适应这种发展趋势，这套丛书从“室内建筑”的角度出发，并以全新的眼光审视室内设计业，收集了建筑装饰行业中有代表性的作品。

本丛书的出版主要是为了给建筑和室内设计行业提供一个广泛交流的平台，以了解结构和装饰方面的新元素。本丛书中的作品按其主题共分为5册，分别为《店面·招牌标识》、《办公空间·工作室》、《美容美发店》、《商店·展示空间》、《娱乐空间》，这些均是现在室内设计需求量最大的。

针对每一个主题，我们精选了许多室内设计师的代表作，每一分册都提供了作品的实景图 and 详细的平面图以及说明。为了与全球室内设计业的发展保持一致，本丛书以全新的、开阔的视野，囊括了目前世界上最杰出的一些作品，以此来给整个行业提供一个全新的概念。

"Ideal Space Design" is a series of books bringing together works of contemporary interior architecture, characterized by their common responsiveness to the demands and aspirations of our time. The series is primarily organized by thematic categories. Today, interior architecture in Korea is no longer limited to the traditional confines of interior decoration, and is reaching out to include construction, especially in the area of smaller buildings of 4 or 5 stories or less. In response to this evolving trend, "Ideal Space Design" has assembled representative works of architecture produced during the past several years, from the point of view of interior architecture, and in the new light it has cast on the field.

"Ideal Space Design" is designed to provide a common ground to architecture and interior design, offering insights into elements of both construction and decoration. Five major themes, the areas of highest demand in recent times, such as "Facade & Signage", "Office & Studio", "Beauty Shop", "Shop & Showroom", "Entertainment" have been selected.

For each theme, noteworthy works both by Korean and overseas Interior Designers are explored. Each volume includes blueprints and detailed floor plans for in-depth exposition. In keeping with the global tendency of today's interior market, the scope of the present edition is broad and all-inclusive, embracing prominent works from all over the world, so as to offer a comprehensive inroad into the world of the latest interior design.



# 目 录

## 美容店

- 8 灵感美容店
- 18 Ra美容中心
- 30 “爱芙兰妮大街”美容中心
- 44 塞布丽娜肌肤护理店
- 52 Miclub美容中心
- 66 Kathy美甲店
- 78 “裸露的脸”美容店

## 儿童美发店

- 224 Little Pom儿童美发沙龙
- 234 Kids BonBon美发沙龙

## 美发店

- 86 Baek Joon Won美发俱乐部
- 98 UGS流行发艺店
- 110 LEE CHUL. HAIRKERKER凤鸣分店
- 118 LEE CHUL. HAIRKERKER屯山分店
- 128 阿伊达美发沙龙
- 136 Falcone美发沙龙
- 144 协同美发沙龙
- 150 Leekyungmin forêt美发店
- 160 JUNO美发店
- 174 AQUA美发店
- 180 Tomotomo美发店
- 190 阁楼美发店
- 204 LEE CHUL. HAIRKERKER江南分店
- 216 Irangbital美发店



# CONTENTS

BEAUTY SHOP		CHILDREN'S HAIR SHOP	
8	Jung Saem Mool Inspiration	224	Little Pom
18	Ra Beauty Core	234	Kids BonBon
30	Enprani Avenue		
44	Sabrina		
52	miclub Beauty Center		
66	Kathy's Nail		
78	Nude Face		
HAIR SHOP			
86	Baek Joon Won Hair Club		
98	UGS Hair Pops, Mapo		
110	LEE CHUL. HAIRKERKER, Carrefour		
118	LEE CHUL. HAIRKERKER, Daejeon		
128	AIDA Hair Salon		
136	Falcone Hairdressing		
144	SYNERGY Hair Salon		
150	Leekyungmin forêt		
160	JUNO Hair, Gwangmyeong		
174	AQUA Hair		
180	Tomotomo Hair Shop		
190	THE LOFT		
204	LEE CHUL. HAIRKERKER, Gangnam		
216	Irangbital *		



BEAUTY & HAIR





## 美容店与美发店/BEAUTY & HAIR SHOP

美容店/指甲护理店/肌肤护理店/美发店/儿童美发店

# SHOP INTERIOR



## 灵感美容店

### Jung Saem Mool Inspiration

地址：汉城市江南区清潭洞141-9号

层数：地上3层

结构：工字梁承重结构

地面：地面砖

墙面：瓷砖

天花板：石膏板、特殊涂料

建筑外饰面：VM钛锌板，双层反射玻璃

Park, Seong-Chil/MOON HAUS

设计的关键是创建一个处于透明与不透明之中的密集空间。正如概念中显示的那样，设计师表达他的翻新设计，使建筑的产品价值最大化，也给空间生动的表达。这座建筑由两种主要材料构成。从外观上可以看到，建筑物的正面用了灰色的钛锌嵌板，与大面积使用玻璃的背面形成了强烈对比。

从建筑的一侧到另一侧，完整的钛锌板转变成了格栅式幕墙，展示了竖向的通透。外面的小路与入口线性地连接着。面对着令人意想不到的内部空间，入口阶梯形成了与外部空间清晰的分界。也就是说，这似乎确保了进入内部空间的塑造手法得以实现——将围合的第一空间与开敞的第二空间聚合起来；两者的对比同时使空间的开敞得以延伸到后院，这也实现了空间开敞性的最大化。剪力墙围成的方形空间使每层的内部拥有一个动态的结构。

简而言之，对应于各个方形区域的不同功用，在方形区域内部设置了各种附加服务项目，而主要的服务空间，诸如理发、头发定型、化妆和肌肤护理，都围绕附加服务空间排列。通过前面与后面的楼梯将各层空间联系起来，有序而又令人难忘。

Dense space in the transparency and opacity. This is the interior keyword that the designer introduced to the Jung saem mool Building. As indicated in the concept, he expressed his renovation design to maximize the product value of the building and to give live expression to the space. The building consists of two main materials. The facade in the gray zinc panel that you can immediately notice from the alley is in exquisite contrast to the rear part with reflection glass.

The continuity of zinc panels structured is transformed from one side to another curtain wall and demonstrates vertical transparency. Entry to the inside also continues linearly as the alley. Confronted with unlooked-for inside, the front space is simply arranged by the clear division of stairs and internal space. That is, it seems to secure the spatial properties into the inside by piling up the block of the first space on the open second space and simultaneously maximize its openness to the backyard. Inner spaces on each floor have a dynamic structure as a square-shape from the existing pressure-resistant walls.

In short, supplementary services are placed inside the squares according to each function, while main services such as haircutting, setting, make-up and skincare are arranged around them. Spaces on each floor are systematically and impressively connected by staircases at front and rear sides.





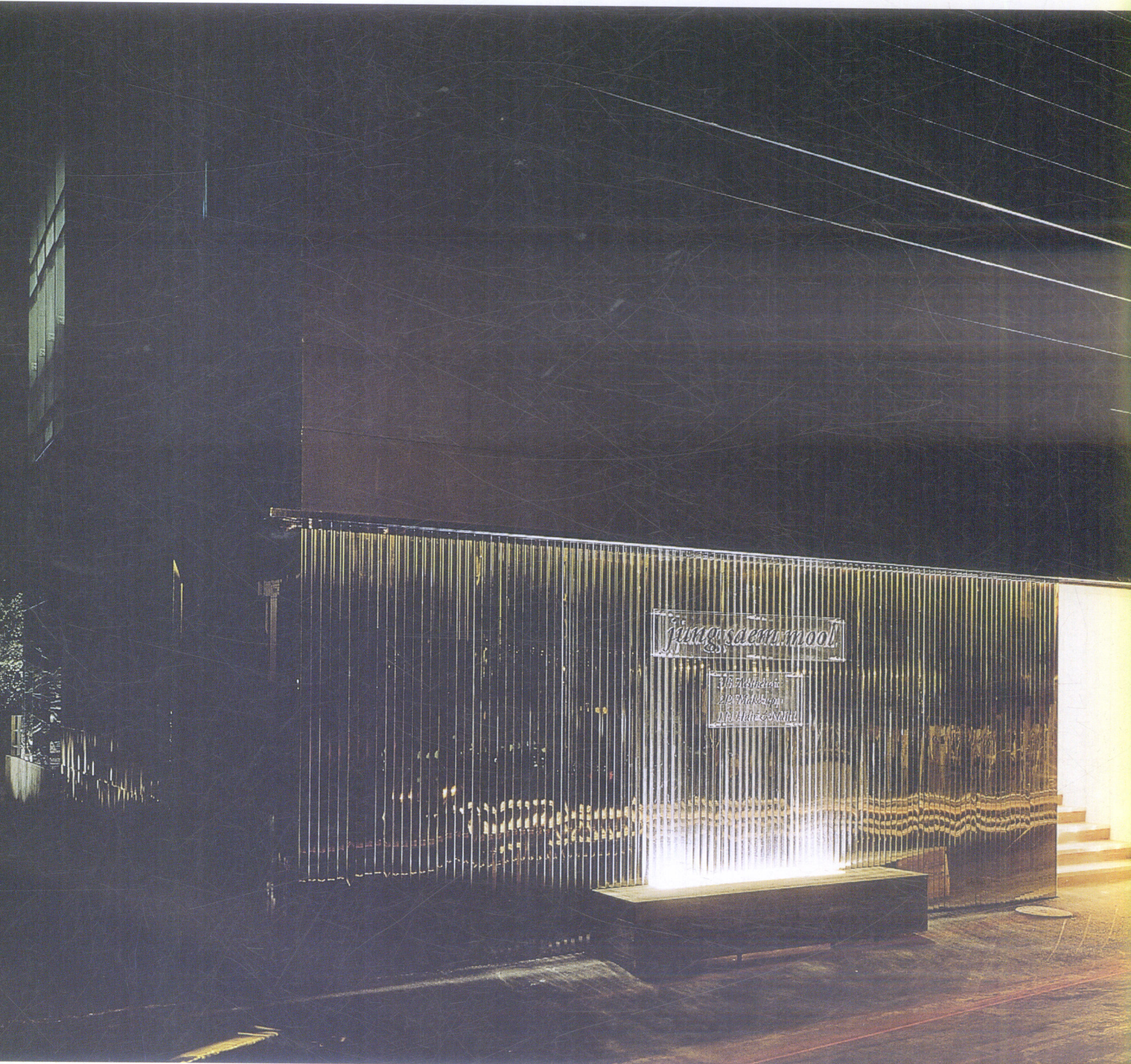


I 2

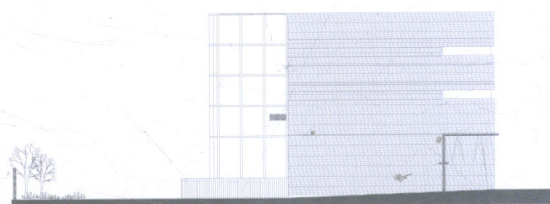
1. 建筑正面
2. 建筑的背面因用了透明的玻璃而显得开敞。与封闭的正面形成了对比。

1. Facade

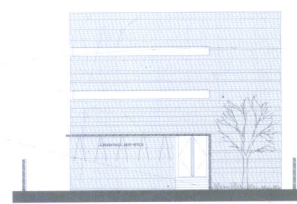
2. The backside of this building is opened with transparent glass contrast with the closed front side.







左侧视图 Left Side View



正视图 Front View

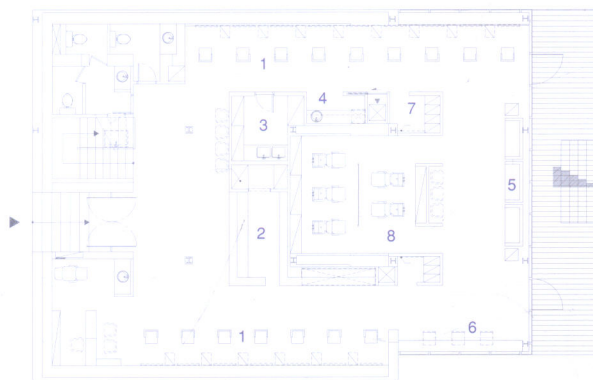


1	2
---	---

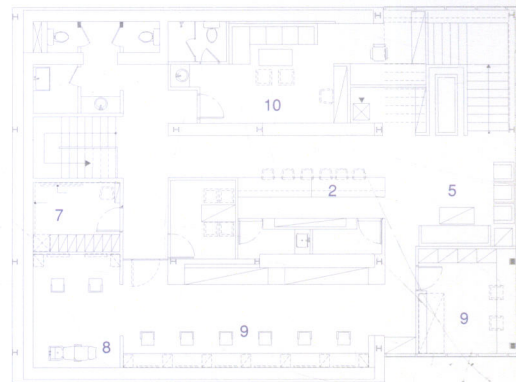
1. 指甲护理区  
2. 空闲空间

1. Nail Care Zone  
2. Void Space

1. 理发与定型区  
2. 咨询台  
3. 物品托管室  
4. 小酒吧  
5. 休息区  
6. 共用区  
7. 更衣室  
8. 洗发室  
9. 化妆室  
10. 主管室



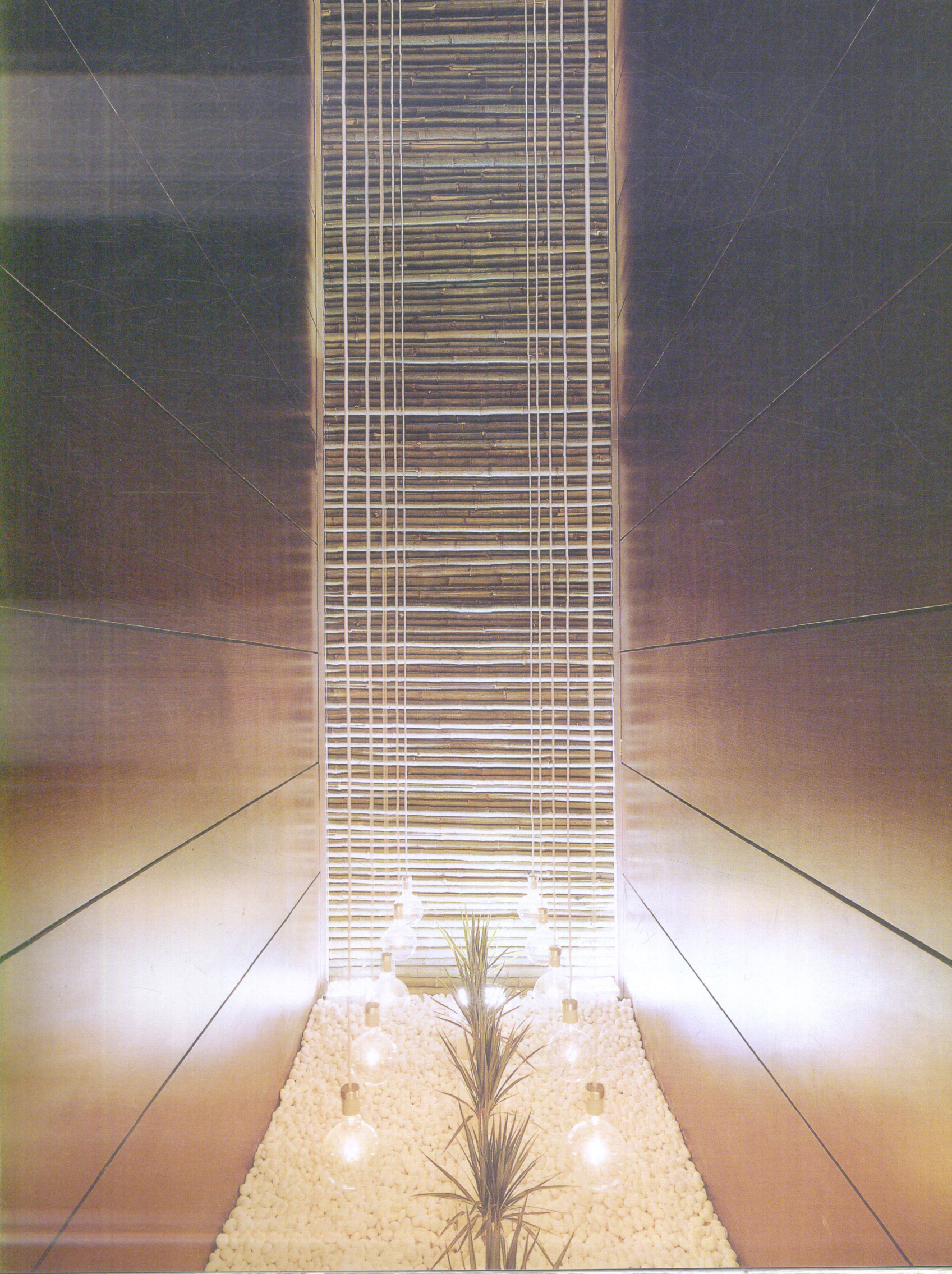
一层平面图 1st Floor Plan



二层平面图 2nd Floor Plan









1 2

1. 咨询台  
2. 非洲崖豆木家具与白色环境形成反差

1. Information Desk  
2. Wenge Wood Furniture in White Color









