

**A R C O**

Everything you need to  
score high on the

**TOEFL**

with CD - ROM

# 最新托福考试指南

P. N. 沙利文 G. Y. Q. 钟

BWPC - S&S 英语考试指导系列

附光盘

世界图书出版公司

Simon & Schuster 国际出版公司



TH  
EDITION

H131-44

S 11

181

418222

A R C O

Everything you need to score high on the

**T O E F L**

with

CD-ROM

Test of English as a Foreign Language

(8th Edition)

**最新托福考试指南**

(附光盘)

[美] P. N. 沙利文 编著  
G. Y. Q. 钟

Macmillan · USA

**世界图书出版公司**

北京 · 广州 · 上海 · 西安

Arco Everything you need to score high on the TOEFL with CD-ROM 8th Edition

P.N.Sullivan & G.Y.Q. Zhong

© 1996 by International Communications Enterprise, Inc. (Software Program)

© 1997 by Grace Yi Qiu Zhong and Patricia Noble Sullivan (Editorial Content)

ISBN 0-02-861924-2

This Chinese edition jointly published by Beijing World Publishing Corporation,  
Simon & Schuster, Inc., 1998

Chinese translation copyright © Beijing World Publishing Corporation, 1998

This edition authorized for sale in the Chinese mainland only.

All rights reserved. No part of this publication may be reproduced in any form  
or by any means without the permission of the publishers.

## Arco 最新托福考试指南

第8版(附光盘)

[美] P.N. 沙利文 编著  
G.Y.Q. 钟

责任编辑 杨凤莲

世界图书出版公司北京公司 重印出版  
西蒙与舒斯特国际出版公司

北京朝内大街137号, 100010

各地新华书店和外文书店销售

北京中西印刷厂印刷

\*

1998年8月第1版 开本: 850×1168 1/16

1998年8月第1次印刷 印张: 28.5

印数: 00001-10000 字数: 63万字

ISBN 7-5062-3828-4/H·257

图字: 01-96-1034

定价: 60.00元

本书由 Simon & Schuster (Asia) Pte Ltd 授权世界图书出版公司北京公司重印出版, 未经出版者书面许可, 本书任何部分不得以任何方式复制或抄袭。

本书封四贴有 Simon & Schuster 或 (Prentice-Hall) 防伪标签, 无标签者不得销售。

版权所有, 翻印必究。

## BWPC-S&S 版前言

你想在托福考试中取得高分吗?无数个考生都在为之努力和奋斗,他们或者去参加各种各样的辅导班,或者独自刻苦地学习。然而,真正要想获得高分还需要备有必需的参考书。由美国托福教学辅导方面的权威人士 PATRICIA NOBLE SULLIVAN 和 GRACE YI QIU ZHONG 撰写的,并由美国 MACMILLAN 出版公司出版的《ARCO 托福考试指南》可以说是最权威和最实用的托福考试参考书之一。

为了能更有效地测试考生英语语言运用能力,主持编写托福考试试卷的“美国教育考试中心”(ETS)对托福考试试卷的内容和形式作了较大的改变,并将以计算机化考试代替笔试。

本书是在第 7 版的基础上,根据将施行的计算机化考试的要求而再版的。新版内容变化不大,主要是增加了该书的计算机光盘(CD-ROM)一张,并给出了软件使用说明。

本书不仅仅为考生介绍了托福考试的最新变化,而且它也是如何准备托福考试的大全,并帮助考生实现考托福得高分这一宿愿。本书的内容包括 4 部分,第一部分介绍托福(TOEFL)考试和托福写作(TWE)的概况及托福考试的技巧、语法和用法等考试要点;第二部分对这些技巧和要点进行了详细讲解,而且还提供了托福词汇表和介词短语表;第三部分是 6 套托福考试模拟试题以及答案解释。最后是模拟考试听力部分的全部文字材料。本书另配有模拟试题中听力部分的录音磁带(录音带中内容及带号与第 7 版相同)

总之,本书尽可能详细地包括了参加托福考试时所遇到的问题 and 难点,有其鲜明的特点。

特点一:模拟试题都是在对很多最近的托福考卷进行系统和认真的研究后才编写出来的。编者仔细研究了以往托福试题的分类和出现的频率,并总结出每题的考点。这些考点在模拟考卷中都得到了体现,使之更具实用性和真实性。

特点二:本书给出的练习题也都是与真题有直接关联的,其目的是使考生随时都可以有的放矢。

特点三:本书在研究和讲解托福考卷的每一部分时,都系统地总结出考卷中每部分的考点和要点,其好处是考生便于总结和归纳,并寻找出规律性的要点,掌握考高分的关键。

特点四:近几年来,托福考试方法正经历着变化的阶段。“美国教育考试中心”(ETS)正在对已延用多年的托福考试内容和形式进行修改。有的部分作了较大的更改,有的部分被删除。本书及时地反映了托福考卷中出现的最新变化,特别是“听力理解”和“阅读理解”部分,以帮助考生尽快地适应 1995 年改题后的托福考试试卷和新的考试形式。

特点五:本书具有很高的权威性,已是第 8 次再版,销量高居所有托福考试参考书之首。

自 1995 年 7 月世界图书出版公司北京公司同 Simon & Schuster 国际出版公司联合推出《BWPC-S&S 英语考试指导系列》以来,该系列考试书一直受到读者的普遍欢迎。本书是该系列之一,是我们同 Simon & Schuster 国际出版公司的继续合作。我们希望此书的出版能为广大考生助一臂之力,在考试中取得好成绩,进入理想的院校。千里之行始于足下,祝您成功!

世界图书出版公司北京公司

1998 年 5 月

# ARCO

## PREPARATION FOR THE TOEFL

---

## SOFTWARE USER'S MANUAL

### IMPORTANT!

- **HARDWARE REQUIREMENTS:** ARCO's *Preparation for the TOEFL* software is available for both IBM and Macintosh computers.
- **SYSTEM REQUIREMENTS:**  
IBM: Windows 3.1 or higher, 486 processor or higher, at least 4MB RAM (8 MB recommended), 4MB available hard-disk space, CD-ROM drive, Sound Blaster compatible sound card and speakers (or head phone), VGA compatible graphics adapter (8 bit or higher recommended), and VGA monitor.  
MACINTOSH: 68030 processor or higher, Apple Operating System 7.1 or higher, 4 MB RAM (8MB recommended), 4MB available hard-disk space, CD-ROM drive, sound card/speakers, color display driver, and color monitor.
- **DISKETTE FORMAT:** ARCO's *Preparation for the TOEFL* software is available **only** on CD-ROM. 3 1/2" diskettes are **not** available.
- **TECHNICAL SUPPORT:** Contact Macmillan Computer Publishing at:  
(317) 581-3833 / FAX (317) 581-4773  
Please telephone between the hours of 9:00AM and 5:00PM Central Time (summer) or Eastern Time (winter).

MACMILLAN • USA

## ARCO'S PREPARATION FOR THE TOEFL SOFTWARE

# USER'S MANUAL

---

### Installing ARCO's *Preparation for the TOEFL* Software

To install ARCO's *Preparation for the TOEFL* software, follow these simple steps:

#### IBM:

1. Ensure that you are in Microsoft Windows 3.1 or higher.
2. Insert the CD-ROM into your computer's CD-ROM drive.
3. From File Manager, click on the "d" drive. Then, double-click on the "setup.exe" icon.
4. You will see an "ARCO's *Preparation for the TOEFL* Setup" window. Click "continue" to proceed with the installation.
5. You will now be asked to select the directory in which ARCO's *Preparation for the TOEFL* software will be installed. The suggested directory is C:\TOEFL. If you wish to use a different directory, enter it in the space provided. When you are ready, click on "OK."
6. The files needed to run ARCO's *Preparation for the TOEFL* software will now be copied to the drive and the directory you selected. A screen message will inform you when the installation process is complete.
7. Once the files have been copied, a Program Manager group and two program icons will be created. These icons will be: (1) ARCO's *Preparation for the TOEFL* and (2) Vocabulary Builder for TOEFL.

#### MACINTOSH:

1. Ensure that you are using System 7.1 or higher.
2. Insert the CD-ROM into your computer's CD-ROM drive.
3. Double-click on the "ARCO's *Preparation for the TOEFL*" icon on your desktop to open the installation folder.
4. Double-click on the "Installer" icon.
5. In the installation dialog box, you will be asked to specify where you would like the software installed. The default folder will be "ARCO's *Preparation for the TOEFL*." If you wish to specify a different folder, enter it in the space provided. When you are ready, click on "OK."
6. The files needed to run ARCO's *Preparation for the TOEFL* software will now be copied to your hard disk. When the process is complete, an alert box will inform you that the installation was successful.
7. You will now have a new folder for ARCO's *Preparation for the TOEFL* program containing two icons: (1) ARCO's *Preparation for the TOEFL* and (2) Vocabulary Builder for TOEFL.

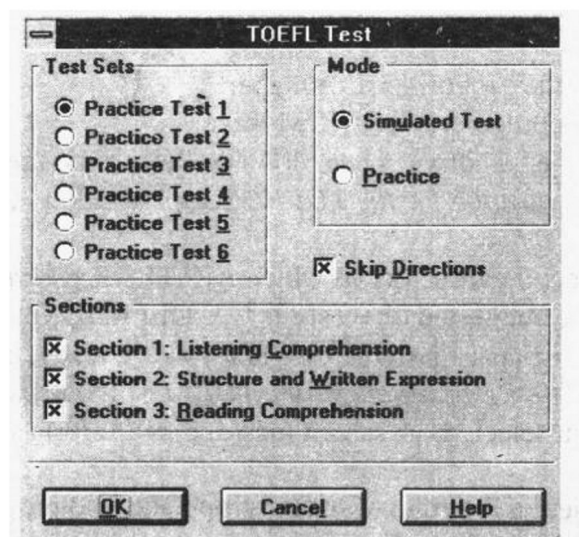
## Using Your New Software

To begin using the program, click on the “ARCO’s *Preparation for the TOEFL*” icon. You will now see the main screen. The main screen’s buttons are:

- Test
- Vocabulary
- Exit
- Score Analysis
- Help
- About

### TEST

Clicking on “Test” will present you with the following screen:



The software contains six full-length practice tests. You can choose to take a test in its entirety, or you can select any of the three sections. You have the option of skipping the directions. If you de-select this box, a full-screen set of directions will appear before each section.

You can choose to take a test in one of two modes: **Simulated Test** or **Practice**.

### Simulated Test

- Simulated Test mode is designed to simulate the conditions you will face on test day.
- *Pacing Yourself:* You are allowed 30 minutes to complete Section 1: Listening Comprehension; 25 minutes for Section 2: Structure and Written Expression; and 55 minutes for Section 3: Reading Comprehension.

Once you begin a section in Simulated Test mode, a timer on the bottom right of the screen displays the time remaining for that section. A counter at the bottom right-hand corner displays how many questions you have answered within the section.

- *Navigating the Questions:* There is a simulated scantron™ answer sheet across the bottom of the test screen. To mark your answers, you may click directly on the letter choice, or you may type in the letter of your choice.



*Working on the Questions:* The questions in Section 1, Parts A–C, have an audio component, and are individually timed at 12 seconds each. If you finish a question early, you may go on to the next question and review the answer choices in the time remaining. When the allotted time is up, the program will automatically continue with the next question.

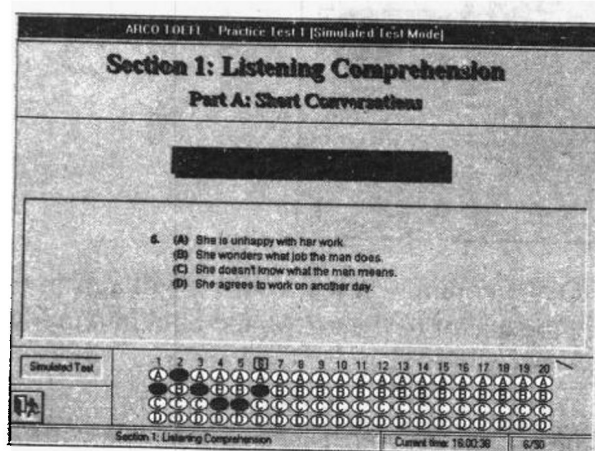
The questions in Section 2 do not have an audio component and are not individually timed. You can proceed through the questions at your own pace by clicking on the question numbers. When you have completed all the questions, you may go back and review or you may click on the “exit” icon (the figure walking out the door) at the bottom left-hand corner of the screen and leave the section early. Once you leave a section, you may not return to it.

The questions in Section 3 do not have an audio component and are not individually timed. Advance through the reading passages by utilizing the scroll bar to the right of the screen. When you have completed all the questions, you may go back and review or you may select the “exit” icon to leave the section early. Once you leave a section, you may not return to it.

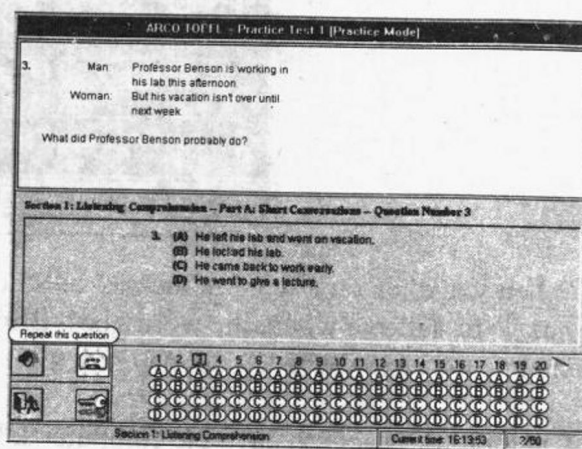
- *Completing and Scoring the Test:* When you have completed all three sections, you will be presented with a “Test Score Board,” which will show you the total number of test questions, the number of questions you answered correctly, and the percentage of correct answers.
- *Evaluating a Timed Test:* If you would like to go back and review the questions, just click on “Review.” This enables you to back over the test in Practice mode (see below).

## Practice

- Practice mode allows you to study the test at your own pace, free from any time pressure.
- In Practice mode, you have unlimited time to complete each section. You will still see the timer and counter in the bottom right of the screen
- As you answer questions in Practice mode, you have four options which appear as icons on the bottom left-hand side of the screen. Clicking on any one of these icons enables you to:
  1. Repeat this question (Section 1 only): replays the question’s audio component.
  2. Show or hide tapescript (Section 1 only): opens a window at the top of the screen that shows the tapescript behind the audio component.
  3. Show explanation (Sections 1–3): opens a box in the middle of the screen that shows the explanatory answer to the question.
  4. Stop this process (Sections 1–3): exits the section.



Simulated Test Mode



Practice Mode



## SCORE ANALYSIS

The Score Analysis screen presents you with a bar graph of your test results. You may compare the results of all six tests at once, or you may examine each set of test results individually. Make your choice by clicking on the folder tab icons at the top of the screen.

You may also configure the graph to display the scores of all sections at once or of one section at a time by scrolling through the “Section” pull-down menu at the bottom of the screen.

## VOCABULARY

Clicking on the “Vocabulary” button in the Main Menu will present you with the Vocabulary Builder screen. This screen consists of three options — Dictionary, Crossword Puzzle, and Matching Game — as well as “Help” and “Exit” buttons.

### Dictionary

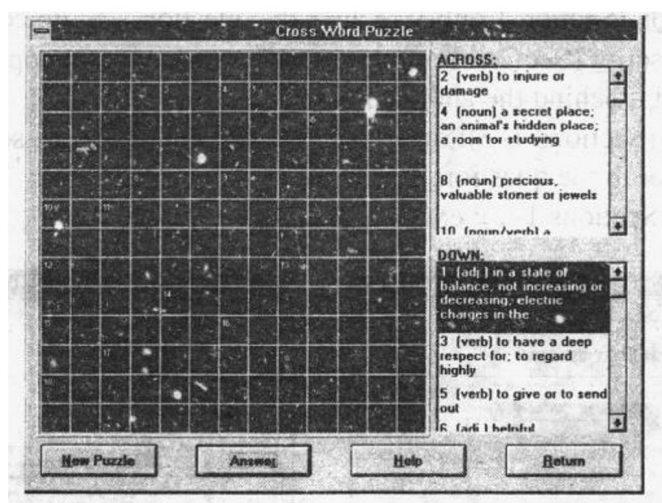
The Dictionary screen presents you with a selective list of vocabulary, definitions, and example sentences. The “Type a letter” option enables you to scroll down the list of words. You may also select a word directly.

Once you select a vocabulary word by highlighting it, you can click on the “Pronounce” button to have the word, definition, and example sentence spoken aloud.

Click on “Return” to go back to the Vocabulary Builder screen.

### Crossword Puzzle

Clicking on “Crossword Puzzle” will present you with the following screen:



When you click on a word in the ACROSS or DOWN columns, a white arrow will appear on the puzzle to indicate where the word goes. Bringing the cursor to the arrow and clicking on it will change the arrow to red. You may now type in your answer.

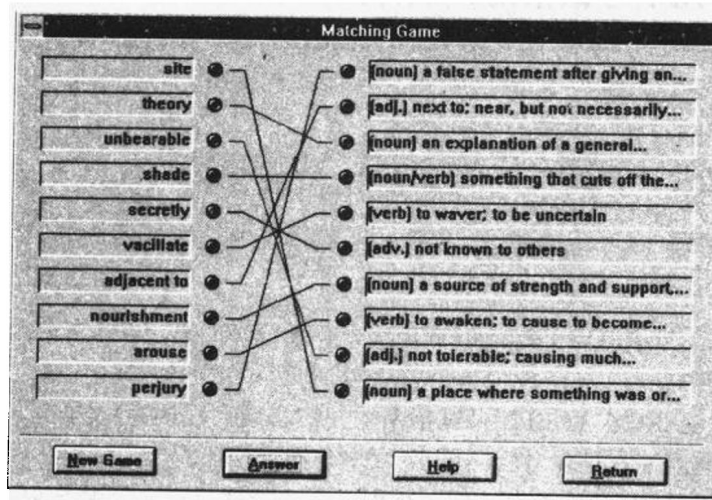
Click on “Answer” to have the computer solve the puzzle for you. The solved puzzle will show the questions you answered correctly in blue and the ones you answered incorrectly in red.

Click on "New Puzzle" to start with a fresh puzzle.

Click on "Return" to go back to the Vocabulary Builder screen.

### Matching Game

Clicking on "Matching Game" will present you with the following screen:



You will be presented with two columns: one of vocabulary words and one of definitions. When a definition is too long to appear on the screen, it will end in an ellipse. You can then guide the cursor over that definition to open a drop-down box that lists the complete definition.

There are gold buttons to the right of the vocabulary words and to the left of the definitions. Select a vocabulary word by clicking on the adjacent gold button; then, select its corresponding meaning by clicking on the gold button adjacent to the definition. As you make your choices, the gold buttons will change to blue and a gray connecting line will join the word and its match.

Click on "Answer" to have the computer solve the matching game for you. The solved game will show the correct answers in green and the incorrect answers in red.

Click on "New Game" to start with a fresh game.

Click on "Return" to go back to the Vocabulary Builder screen.

### HELP

Click on this button from the Main Menu to access the Help program.

### EXIT

Click on this button from the Main Menu to exit the software program.

### ABOUT

Click on this button from the Main Menu for information about ARCO's *Preparation for the TOEFL* software.

# 《ARCO 最新托福考试指南》 软件使用说明

## 《ARCO 最新托福考试指南》软件的安装

请按以下步骤安装《ARCO 最新托福考试指南》软件

### IBM:

1. 进入 Windows (微软公司 Windows 3.1 或更高版本)
2. 将光盘插入光盘驱动器
3. 在文件管理器下, 选择 D 盘 (“D” 是 “光盘驱动器盘” 符号), 双击 “SETUP.EXE” 图标
4. 屏幕出现 “ARCO's Preparation for the TOEFL Setup” 字样, 单击 “continue” 键, 开始安装
5. 选择安装 ARCO TOEFL 考试指南软件的目录, 默认为 C:\TOEFL。若另选目录, 在输入框内键入目录名后, 单击 “OK” 键
6. ARCO TOEFL 考试指南软件运行程序装入选择目录。安装结束后, 屏幕将显示成功安装信息
7. 安装完成后, 将创建 ARCO TOEFL 考试指南程序组和 2 个可执行程序图标: ARCO's Preparation for the TOEFL 和 Vocabulary Builder to TOEFL.

### MACINTOSH:

1. 系统使用 System 7.1 或更高版本
2. 将光盘插入光盘驱动器
3. 双击 “ARCO's Preparation for the TOEFL” 图标, 打开安装文件夹
4. 双击 “Installer” 图标
5. 出现安装对话框时, 选择安装目录。默认文件夹为 “ARCO's Preparation for the TOEFL”。若选择其他文件夹, 在输入框内键入新的文件夹名后, 单击 “OK” 键
6. ARCO TOEFL 考试指南软件运行程序装入硬盘, 安装结束后, 屏幕将显示成功安装信息
7. 安装完成后, 将生成新的文件夹以及 2 个程序图标: ARCO's Preparation for the TOEFL 和 Vocabulary Builder to TOEFL.

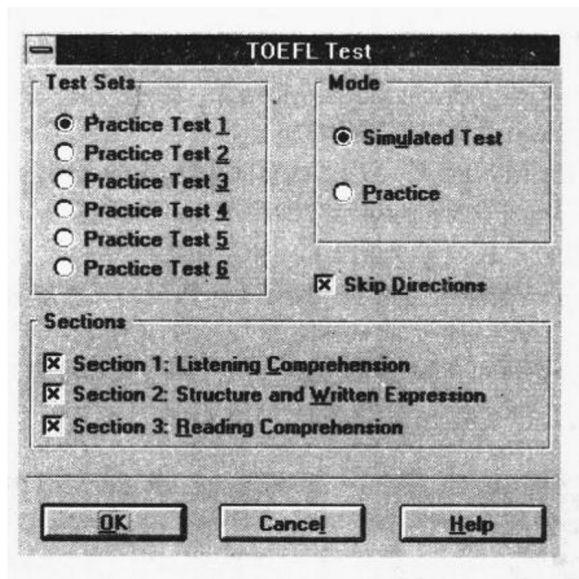
## 软件使用

运行程序, 单击 “ARCO's Preparation for the TOEFL” 图标, 屏幕显示主菜单, 主菜单项目有:

- |                   |                         |
|-------------------|-------------------------|
| ● Test (测试)       | ● Score Analysis (得分分析) |
| ● Vocabulary (词汇) | ● Help (帮助)             |
| ● Exit (退出)       | ● About (版本说明)          |

## TEST (测试)

单击“Test”屏幕显示如下:



软件包括 6 套完整的模拟试题, 可选择全套试题, 也可选择试题 3 部分中的任意一个。可选择“Skip Directions”(跳过提示) 复选框。若不选择(复选框为空), 每部分测试开始前将显示测试提示。

可选择以下两种测试方式: **Simulated Test** (模拟考试) 或 **Practice** (练习)。

### Simulated Test (模拟考试)

- 模拟考试按正式考试方式编排
- 自我测试: 假设你用 30 分钟完成第 1 部分: Listening Comprehension (听力理解); 25 分钟完成第 2 部分: Structure and Written Expression (结构和书面表达); 55 分钟完成第 3 部分: Reading Comprehension (阅读理解)
- 一旦开始某一部分的模拟测试, 屏幕右下角的计时器将显示这一部分的剩余时间, 计数器也将显示该部分测试题的完成数日。
- 答题: 在测试题下方是 Scantron™ (计算机判卷标识), 选择答案可用鼠标直接点相应字母, 也可输入相应的字母。
- 回答问题: 第 1 部分试题, A—C 听力测试, 每道题间有 12 秒间隔。提前答完一道后可继续下一道题, 剩余的时间可检查已完成的试题。12 秒过后, 程序将自动进入下一道题。
- 第 2 部分试题没有听力, 亦无各道题的时间限制。可按自己的速度答题, 任意选择答题顺序。完成全部试题后, 可返回检查已完成的试题或单击屏幕左下角的“exit”图标(手指向门的图案), 提前结束本部分测试。退出本部分答题后, 将无法再返回。
- 第 3 部分试题也没有听力和各道题的时间限制。可按动屏幕右侧的翻页按钮, 上下阅读文章并答题。完成所有试题后, 可返回检查答案, 也可单击“exit”图标提前结束本部分测试。一旦退出将无法返回。
- 判卷: 完成 3 部分试题后, 屏幕将显示得分表。内容有试题总数, 正确答题数和正

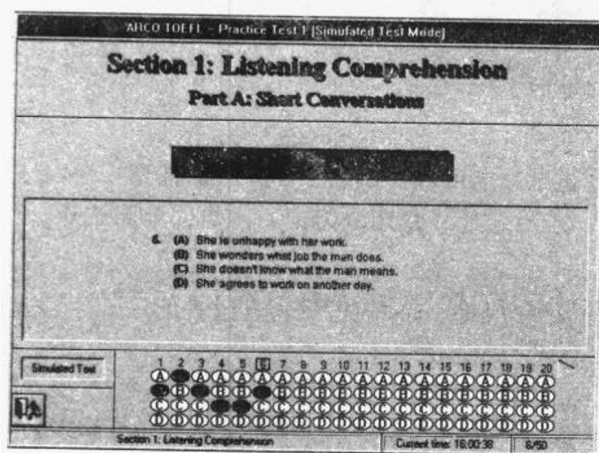
03828 1A

确率。

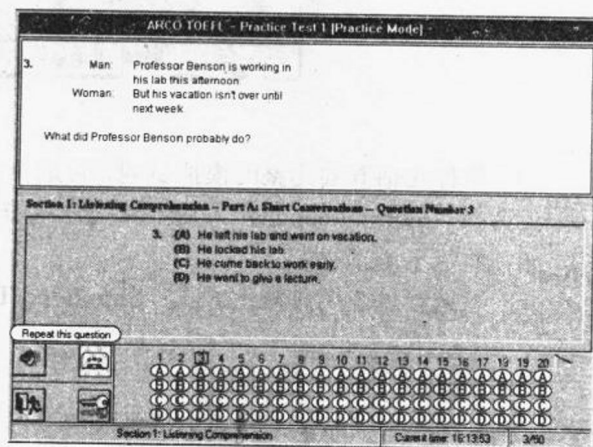
- 限时测试练习：若想返回和检查答题，可单击“Review”图标，将进入练习模式（详见以下说明）

## Practice (练习)

- 练习模式可按自己的步骤进行，不受时间限制。
- 练习模式中每部分答题时间不限，但屏幕右下角仍有计时和计数显示。
- 在练习模式中答题，屏幕左下部分的图标显示有四种选择，单击任意一个图标：
  1. Repeat this question（重复答题，仅限第1部分）：重复听力部分。
  2. Show or hide tapescript（显示或隐藏听力文字，仅限第1部分）：在屏幕上部显示听力文字窗口。
  3. Show explanation（显示答题解释，包括第1—3部分）：在屏幕中部显示答题解释。
  4. Stop this process（结束练习，包括第1—3部分）：退出本部分练习。



Simulated Test Mode（模拟考试模式）



Practice Mode（练习模式）

## SCORE ANALYSIS（得分分析）

得分分析屏将用图表形式显示测试结果。选择屏幕上方的标签，可比较所有6次测试结果，或每次测试结果。

选择屏幕下方“Section”的下拉菜单，显示所有部分或某一部分的得分图表。

## VOCABULARY（词汇）

在主菜单下单击“Vocabulary”按钮，屏幕出现 Vocabulary Builder，包括内容有：字典、字谜、配词游戏及帮助与退出键。

## Dictionary（字典）

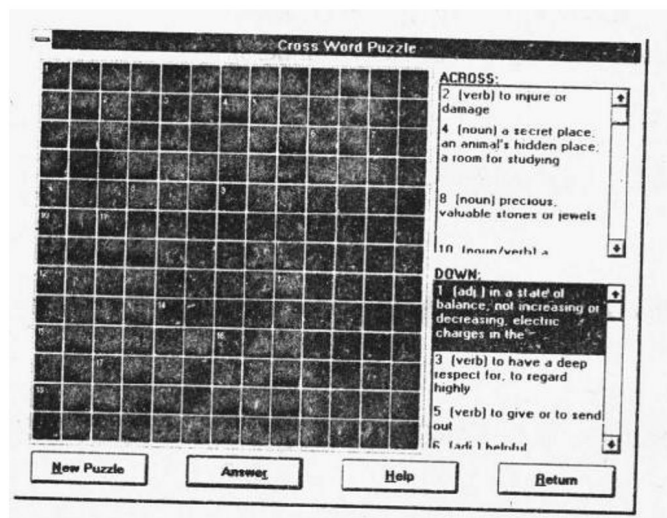
屏幕显示词汇表、定义、例句。“Type a letter”（键入字母）选项可使光标快速移至所选字母，也可直接选定某单词。

一旦选中某词汇（此单词呈反白显示），可单击“Pronounce”（发音）键，读出单词、定义、及例句。

单击“Return”（返回）键，便返回 Vocabulary Builder 屏。

### Crossword Puzzle（字谜）

单击“Crossword Puzzle”（字谜）键，屏幕显示如下：



当单击“横向”或“纵向”栏位的一个词，白色箭头将指示该词的构成方向。单击箭头后，箭头呈红色，此时可键入答案词汇。

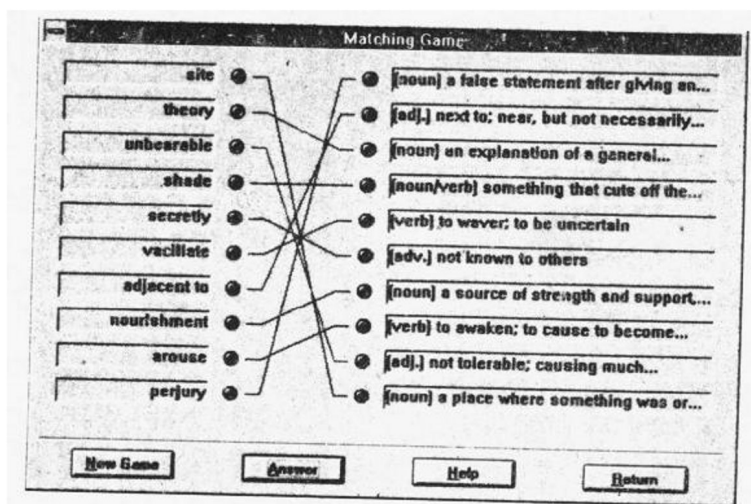
单击“Answer”（答案）键，电脑将给出字谜答案。你答对部分将显示蓝色，未答对部分显示红色。

单击“New Puzzle”（新字谜）键，开始新的字谜。

单击“Return”键，返回 Vocabulary Builder 屏。

### Matching Game（配词游戏）

单击“Matching Game”（配词游戏）键，屏幕显示如下：



左右两栏：单词和定义。当定义太长不能在屏幕栏位上完整显示时，后加注省略号表示。将光标移至该词定义栏，屏幕出现下拉窗口，显示完整定义。

单词的右边和定义的左边是金色按钮，单击一单词旁按钮，再单击与之相配的定义旁按钮。完成选择后，金色按钮变成蓝色，一条灰色连线将把单词与之相配的定义连接起来。

单击“Answer”（答案）键，电脑将给出单词与定义相配答案。绿色表示答对，红色表示答错。

单击“New Game”（新游戏）键，开始新的配词游戏。

单击“Return”（返回）键，返回 Vocabulary Builder 屏。

### **HELP（帮助）**

在主菜单选择 Help 键，启动帮助程序。

### **EXIT（退出）**

在主菜单选择 Exit 键，退出本软件，返回 Windows。

### **ABOUT（版本说明）**

在主菜单上选择 About 键，显示《ARCO 最新托福考试指南》软件版本说明



# P r e f a c e   t o   t h e   T e s t - T a k e r

## Why Use This Book

This book can help you earn high scores on the TOEFL. Here are three important reasons why:

First, the practice tests in this book are very similar to those on the actual TOEFL. The practice tests were developed after a statistical analysis of questions in many recent TOEFL tests. We analyzed the frequency with which certain types of questions occurred on previous TOEFL tests and developed categories of testing points represented by each question. These testing points were then used to write practice questions that are very much like actual TOEFL questions.

Second, every practice question and every strategy relates directly to succeeding on the TOEFL. You won't waste your time or money using a book that has material that is not related to the TOEFL.

Third, this book will help you organize your study by pointing out the common testing points in each section of the TOEFL. These testing points show you what to study to score high on the TOEFL. When you focus on the testing points of the TOEFL questions as you study, you will increase your skills in answering similar questions on the actual TOEFL.

In the next few years there will be major changes in the TOEFL. The Educational Testing Service, which produces the TOEFL, is in the process of making changes that should increase the effectiveness of the test. Some sections that have been standard for many years will be removed. Other sections will change considerably. This TOEFL practice book reflects the most recent TOEFL changes, particularly in the Listening Comprehension and Reading Comprehension sections. Because of the continued revisions that will appear over the next several years, it is extremely important that you carefully read the most up-to-date TOEFL Bulletin of Information, comparing that information with what you read in this book.

## How to Get the Most Out of This Book

The major part of this book consists of six practice tests. We know that practice tests help you prepare, and that is why this book gives you six of them. But it is also important for you to practice test-taking skills. We recommend the following approach to this book:

1. Use the Listening Comprehension audio cassette to get the full benefit of the Listening Comprehension practice tests.
2. Read Part One to get a general idea of the TOEFL and TWE and the general rules for taking these tests.
3. Read Part Two to learn about the types of questions, testing points, and test-taking strategies.
4. Take the complete Test 1, following the time limits exactly. First check your answers using the answer key only. If you missed a lot of questions, go back to Part Two and reread the testing points and strategies for the sections that were difficult for you. Then take the practice test again and check the answer key to see if you improved your score. After checking the answer key, read the explanatory answers to check again on the testing points of the questions you missed.
5. Take Practice Tests 2, 3, 4, 5, and 6 just as you took Test 1. Go back and forth between the practice tests and the sections in Part Two that give you information about testing points. Focus especially on the testing points in the areas that are most difficult for you.

# A c k n o w l e d g m e n t s

There are several people who helped us in writing this book. Some helped by prewriting questions; others helped by taking the practice tests to test the questions. For their help in prewriting some of the test questions we would like to thank Gail Brenner, David Biggs, Karen Connor, Andrew Levandowski, and Xin Liu. Thanks also goes to Zhong Yu Ming for the many hours he spent on test questions and exercises.

For their help in pretesting the sample tests we would like to thank staff, instructors, and students at the English Language Institute at Golden Gate University in San Francisco, California: Director Karen F. McRobie; instructors Michael Smith, Tina Martin, and James J. Ives; and all the students who took the practice tests. An additional thanks goes to Gail Brenner from Santa Cruz Adult School, Santa Cruz, California, and her students for pretesting TOEFL and TWE tests. All of their comments and suggestions assisted us in producing the practice tests in this book. Any errors, however, remain ours alone.

## About the Authors

**PATRICIA NOBLE SULLIVAN** is a lecturer at the University of California, Santa Cruz. She has a Ph.D. in Education, with a focus in Language, Literacy, and Culture, from the University of California, Berkeley. She has taught English and TOEFL in California, China, Taiwan, Afghanistan, and Vietnam.

**GRACE YI QIU ZHONG** came to the United States from Shanghai, China, in 1984. She received a Master of Arts degree in Sports Psychology from California State University, Sacramento, in 1987, and has been coaching TOEFL students since 1989.