

英语考试丛书

IELTS



北语“雅思”

IELTS 听力模拟试题集

田静先 李亚宾 编著

北京语言文化大学出版社

(京)新登字 157 号

图书在版编目 (CIP) 数据

IELTS 听力模拟试题集 / 田静先, 李亚宾编著.

— 北京: 北京语言文化大学出版社, 2000

ISBN 7-5619-0867-9

I. I...

II. ①田... ②李...

III. 英语—视听教学—水平考试—试题

IV. H31-44

中国版本图书馆 CIP 数据核字 (2000) 第 08986 号

DN28/19

责任印制: 乔学军

出版发行: 北京语言文化大学出版社

(北京海淀区学院路 15 号 邮政编码 100083)

印 刷: 北京北林印刷厂

经 销: 全国新华书店

版 次: 2000 年 6 月第 1 版 2000 年 6 月第 1 次印刷

开 本: 787 毫米 × 1092 毫米 1/16 印张: 11.75

字 数: 244 千字 印数: 00 001—10 000

书 号: ISBN 7-5619-0867-9/H·0047

定 价: 18.00 元

出版说明

自 IELTS 考试在我国实施以来,北京语言文化大学一直在举办 IELTS 应试培训,至今已有十多年的历史,并出版了一套《IELTS 考试技能训练教程》,包括听力、阅读、口语、写作四本。这套教程的作者都曾专赴英国进行 IELTS 考试培训进修,是中英 IELTS 合作项目组的成员,十多年来一直从事 IELTS 考试培训教学。因此这套教程以其针对性强、实用性强等特点深受广大 IELTS 考生的欢迎。

近年来,随着加拿大、新西兰、澳大利亚等国相继将 IELTS 考试成绩作为衡量非英语国家留学生及移民英语水平的标准,IELTS 考生,尤其是准备申请移民的 IELTS 考生人数激增。为了满足不同英语基础及不同目的的 IELTS 考生的需求,我们对《IELTS 考试技能训练教程》进行了修订,并新增了几个 IELTS 考试用书的品种,供读者根据自己的实际情况选用。这次新增的品种包括:

《IELTS 阅读模拟试题集(General Training)》

《IELTS 听力模拟试题集》

《IELTS 应试指南》

《IELTS 词汇学习手册》

其中前三册仍由《IELTS 考试技能训练教程》的作者编写;《IELTS 词汇学习手册》由具有丰富词典编纂经验及英语教学经验的史宝辉教授编写。书中内容经过反复筛选、精心推敲,以确保其既涵盖 IELTS 考试的重点,又针对 IELTS 考生的难点。相信这些书定能帮助您高效、有的放矢地备考 IELTS,并使您的 IELTS 考试成绩有一个新的飞跃。

北京语言文化大学出版社

前言

IELTS 考试(International English Language Testing System)是由英国剑桥大学地方考试委员会(UCLE)、英国文化委员会(BC)和澳大利亚教育国际开发署(International Development Program of Australia Education)三方联合举办的一种英语水平考试。目前,除了英国、澳大利亚以外,加拿大、新西兰等英联邦国家也承认该考试成绩,并以该考试成绩作为进入这些国家大学学习或者移民的通行证。近几年美国也有 80 多所学校承认并接受 IELTS 考试成绩。

参加 IELTS 听力考试的考生,无论其目的是出国留学,还是准备移居国外,所考试的内容都是一样的。它的内容主要包括三方面:1. 日常生活中衣、食、住、行的场景,例如:旅行中在旅馆的住宿登记,购车票,商店购物,在银行开户,收听广播、新闻等;2. 在校学习场景,例如:听讲座、专题报告,参加专业讨论,与导师讨论选课,去图书馆借阅等;3. 社会热点问题,例如:环保、动物保护、人口、水的污染与治理、城市交通等。

IELTS 听力考试共分四部分,每部分设置答题约 10 个,一般一份试卷设置 40 题左右。每部分题型各异,常出现的有以下几种题型:

1. 多项选择题(multiple choice),即正确答案的选择可以是一项或者是多项。
2. 判断正误(true or false,或者 accurate or inaccurate),有时题中的信息并没有在听力材料中给出,还需要用“N”即 not given 表示,或者信息不足以判断正或误时,需用“?”表示。
3. 各种表格的填写(form filling)。
4. 找方位(location),根据描述在图上标出人或物的方位。
5. 完成句子(complete sentences),要求用不超过 3 个词完成句子。
6. 回答问题(answer questions),要求用一个词或一个词组回答问题。
7. 填空(fill in the missing information),一般为大段的讲话,其中有些信息需要考生根据所听内容填单词或词组,使信息完整地连贯起来。

以上七种形式在各部分都可能出现,IELTS 听力考试就是通过这些不同的测试形式考查考生的听力能力以及实际运用语言的能力和技巧。多数考生反映,听力部分测试的难点不是听不懂,而是听完记录不下来。这说明考生缺乏听、读、写的综合技能训练。我们建议考生在平时训练时要尽量边听边记录,不要听完再追记。要加强自己速记能力的培养。另外,在做每一部分测试前,一定要认真审题(每部分测试前都留有 30 秒钟的审题时间),这样才能够明确问题,捕捉听力材料中所需要的信息,并准确地记录下来。

IELTS 听力考试满分为 9 分,40 题中答对 27 题可达到及格线 6 分。根据 IELTS 的评分标准,我们给出参考评分线:

正确答题	评分
40	9
38 ~ 39	8.5
36 ~ 37	8
34 ~ 35	7.5
32 ~ 33	7
30 ~ 31	6.5
27 ~ 29	6
25 ~ 26	5.5
23 ~ 24	5

IELTS 考试的形式与美国的 TOEFL 和我国的许多英语考试形式有很大不同。目前,在国内市场上这类的考试资料及教材很少。尽管我们这几年编辑出版了两本听力教材:《IELTS 英国考试听力训练》(1993)和《IELTS 考试技能训练教程·听力》(1997),但是远远不能满足考生的需要。为此,我们总结了 IELTS 考生的反馈意见,编写了这本《IELTS 听力模拟试题集》供大家学习。

本书的编写得到美国、加拿大和爱尔兰专家的帮助和指导,在此我们对他们表示感谢。

编者

2000 年 4 月

目 录

模拟试题

模拟试题一	(1)
模拟试题二	(5)
模拟试题三	(9)
模拟试题四	(13)
模拟试题五	(19)
模拟试题六	(23)
模拟试题七	(27)
模拟试题八	(31)
模拟试题九	(37)
模拟试题十	(43)
模拟试题十一	(47)
模拟试题十二	(53)

录音文本

模拟试题一	(58)
模拟试题二	(66)
模拟试题三	(76)
模拟试题四	(84)
模拟试题五	(93)
模拟试题六	(101)
模拟试题七	(111)
模拟试题八	(118)
模拟试题九	(128)
模拟试题十	(137)
模拟试题十一	(148)
模拟试题十二	(157)

答案	(168)
----------	-------

附录:1. IELTS 考试简介	(173)
------------------------	-------

2. IELTS 听力答题卡	(177)
----------------------	-------

模拟试题一
INTERNATIONAL ENGLISH LANGUAGE
TESTING SYSTEM

PRACTICE TEST (Version One)
LISTENING

Section 1 Questions 1 - 12

Questions 1 - 2

Complete the table. Write **NO MORE THAN THREE WORDS** for each answer.

Categories	Definition
Fiction	Books containing 1. _____ made up by the author
Nonfiction	Books containing 2. _____ material

Questions 3 - 4

Answer the following questions by writing **NO MORE THAN THREE WORDS**.

3. How are fictional books organized in a library? _____
4. What is the name of the most widely used
library organization system? _____

Questions 5 - 9

Complete the notes below by writing **NO MORE THAN THREE WORDS** in the spaces provided.

The best way to find a book in the library is 5. _____ the card catalogue. The catalogue is an 6. _____ of all the books. All the cards are filed alphabetically and 7. _____ in drawers in large cabinets. There are three types of cards found in the card catalogue; an author card, 8. _____ card and 9. _____ card. The card catalogue can help you to find a book easily.

Questions 10 - 12

Complete the table below using **NO MORE THAN THREE WORDS** for each answer.

Reference books	Definition
Encyclopedias	Contain articles about a variety of subjects and give many 10. _____.
11. _____	Are books of maps often arranged by country or continent.
Almanacs	Contain recent statistics and summaries of information on a variety of topics, are published 12. _____.

Section 2 Question 13 - 19

Questions 13 - 16

Indicate whether the following statements are true or not, by writing **T** for true and **F** for false.

13. All people know how to use their memories.
14. The more you understand how to use your memory, the more things you can remember and the better you can retain them.
15. It's easier to remember a set of facts together with your friends.
16. Visualizing is the last step to prepare your memory.

Questions 17 - 19

Complete the notes below by writing **NO MORE THAN THREE WORDS** in the spaces provided.

17. You should recite facts over and over again until you can _____.
18. It's a good way to place the easier facts near _____ of your list.
19. If you can recall the information easily, your review time can be _____.

Section 3 Questions 20 - 32

Questions 20 - 24

Complete the notes below by using **NO MORE THAN THREE WORDS**.

People use writing as a way of 20. _____ their thoughts and feelings. The purposes for writing are important. If you want to use 21. _____ to tell someone something, you probably need to 22. _____ your thoughts clear. Your writing can help you 23. _____ your thoughts clear, 24. _____ some of your ideas and to remind yourself of important points.

Questions 25 - 27

Circle the correct letters.

25. According to the speaker, what are you expected to learn before writing?
- A. Who will assess your work.
 - B. Whom you will work with.
 - C. How much you should write in the paper.
 - D. What the work should look like.
26. When writing essays you should have
- A. a selection of books.
 - B. the subject that holds the information together.
 - C. ways of making pattern drills.
 - D. ways of using different link words.
27. The speaker suggests that your order should
- A. fit in with the reader's purpose.
 - B. make sense to your reader.
 - C. fit around all of what you want to include.
 - D. be asked to do easily.

Questions 28 - 32

Complete the notes below by writing **NO MORE THAN THREE WORDS**.

A good essay writer should 28. _____ the question with great care and be sure you are sufficiently 29. _____ on the topic, then you should 30. _____ the questions carefully till you are absolutely sure of what it is 31. _____. Planning the answer is also important for an essay writer. You should list all the points you feel 32. _____ to the answer.

Section 4 Questions 33 - 41

You are going to listen to a local radio program that is broadcast daily and gives out information about job vacancies. Listen to the recording and complete the chart below. Put a tick (✓) where appropriate or N for no information. Some of the information has already been filled for you.

Job	Experience	Age	Pay	Additional information
Engineer	✓		Pay agreed	Mon. - Fri. 8:30 - 5:00 Sat. 8:45 - 4:00
Cook	33.	34.	5 per hour	35.
Stewardess	N	36.	Reasonable	2 months holiday a year Need to speak 37. _____
Operator	38.	School-leaver	39.	
Shop assistant	N	40.	41.	One late night work in a week

模拟试题二
INTERNATIONAL ENGLISH LANGUAGE
TESTING SYSTEM

PRACTICE TEST (Version Two)
LISTENING

Section 1 Questions 1 - 13

Questions 1 - 6

Fill in the form below with the information you need.

TV Channels	Time	Name of the Programme	Content of the Programme
BBC 1	8:00	Face to Face	Talk to an American writer
BBC 1	9:00	1.	Titanic
BBC 2	2.	Sports	Live coverage of 3. _____
BBC 2	10:00	4.	Talk about elephants in Africa
5.	10:15	Sounds Around	Life and music of Ian Sibelius
Channel 4	6.	Holidays	Holidays in China

Questions 7 - 10

*Look at the statements numbered 7 - 10. As you listen , write **T** if the statement is true , **F** if the statement is false or **N** if there is no information given .*

7. El Nino has caused great disasters.
8. El Nino makes summer cooler.
9. Flight C 1676 crashed and exploded near Bali airport shortly after its take - off.
10. 203 people were killed in the crash.

Questions 11 - 13

Circle the correct letter .

11. Who won the lawsuit brought by Texas cattlemen?
 - A. Texas cattlemen.
 - B. The defendant.
 - C. Texas beef producers.
 - D. Texas Cattlemen Association.
12. Who is Ms Winfrey?
 - A. A juror.
 - B. A cattlegwoman.
 - C. A talk show host.
 - D. A spectator.
13. How long did the eclipse last?
 - A. One minute.
 - B. Twelve minutes.
 - C. Four minutes.
 - D. Fourteen minutes.

Section 2 Questions 14 - 19

Questions 14 - 16

*Look at the statements numbered 14 - 17. As you listen , write **T** if the statement is true , **F** if the statement is false or **N** if there is no information given .*

14. Pat has phoned her friend because she hasn't seen her for ages.
15. Pat's friend has had 20 interviews so far.
16. In interviews 'Wh' questions are often asked.

Questions 17 - 19

Circle the correct letters.

17. Pat is applying for a position as a
- A. research engineer.
 - B. mechanical engineer.
 - C. auto mechanic.
 - D. manager.
18. She is interested in the job because
- A. it's a well paid job.
 - B. it's a part-time job.
 - C. she likes to do research.
 - D. she likes a challenge.
19. She was dismissed from the position as an auto mechanic because
- A. the manager didn't like her.
 - B. she was a clock watcher.
 - C. of sexual discrimination.
 - D. of a customer's complaint about her work.

Section 3 Questions 20 - 32

Questions 20 - 24

Fill in the gaps below.

- | | |
|--------------------------------|-----------|
| People | 20. _____ |
| Weather in winter in the north | 21. _____ |
| Terrain | 22. _____ |
| Cities | 23. _____ |
| Dangers to live in Japan | 24. _____ |

Questions 25 - 28

*Answer the questions by writing **NO MORE THAN THREE WORDS**.*

25. What does Keiko think about the English people?
- _____
26. What does Keiko think about the way of life of the English people?
- _____

27. What has Keiko said about English food?

28. Does Keiko like the summer in England? Why?

Questions 29 - 32

Complete the notes below by writing **NO MORE THAN THREE WORDS** for each answer.

29. Peter thinks the loveliest time of the year in Britain is _____.

30. Peter finds the English people very reserved and _____.

31. Peter thinks life in the States is a lot _____.

32. He goes back home _____.

Section 4 Questions 33 - 41

Fill in the table below with the information you need.

Language family	Languages (any two)	Spoken in
Indo-European	English, 33. _____	Europe
34. _____	35. _____, Hausa	North Africa and 36. _____
Bantu	Swahili, Zulu	37. _____
38. _____	39. _____	China, Southeast Asia
Polynesian	Indonesian, 40. _____	41. _____ from Madagascar east to Hawaii

模 拟 试 题 三
INTERNATIONAL ENGLISH LANGUAGE
TESTING SYSTEM

PRACTICE TEST (Version Three)
LISTENING

Section 1 Questions 1 - 10

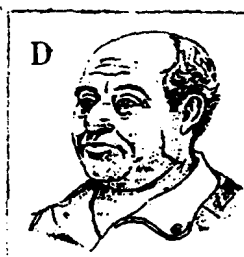
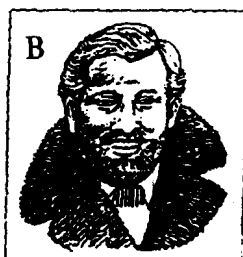
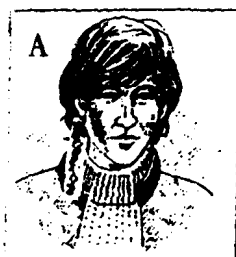
Questions 1 - 6

Complete the notes. Write **NO MORE THAN THREE WORDS** for each answer.

Linda is an	<i>Example : Art student . .</i>
1. Charles' occupation	
2. What does he teach?	
3. When will Charles arrive at Heathrow?	
4. What's his flight number?	
5. Why can't Linda meet him?	
6. Has Charles met Peter before?	

Question 7

Who is Peter Wilson?



Questions 8 - 10

Complete the notes.

	Boeing	Concord
Passengers' capacity	8.	9.
Speed	10.	2,333km / h

Section 2 Question 11 - 22

Questions 11 - 12

Complete the statements below. Use up to three words.

11. Britain and New Zealand are _____ in size.

12. Britain has a population of _____.

Questions 13 - 15

Answer the following questions.

13. How many British people do the volunteer work? _____

14. Who can benefit from "Meals on Wheels"? _____

15. What is a traditional British food? _____

Questions 16 - 17

Fill the missing information in the table below.

Types of newspaper	Definition provided
Popular	Physically smaller and more 16. _____ in their reporting of news
Serious	Larger and they report current events in a more 17. _____ way

Questions 18 - 22

*Indicate whether the following statements are true or false by writing **T** for true and **F** for false.*

18. Students aged 16 often take 3 subjects at GCSE level test.
19. "A" level exam is taken by 18-year-old students.
20. Most of the British people prefer living in a house to a flat.
21. All British people are reserved, polite and private.
22. You should not take too seriously British people's sarcastic humor.

Section 3 Questions 23 - 32

Questions 23 - 26

*Complete the notes below by using **NO MORE THAN THREE WORDS** for each answer.*

23. Number of seats for readers	
24. Number of volumes the library well-stocked	
25. How many sections are there in the library?	
26. How long can the student keep the books?	

Questions 27 - 29

Circle the correct letters.

27. Where is the Reference Section?
- A. On the ground floor.
 - B. On the first floor.
 - C. On the second floor.
 - D. On the third floor.