

世界建筑 7

World Architecture 7

Apartment Building

公寓建筑设计

佳图文化 编

I



华南理工大学出版社
SOUTH CHINA UNIVERSITY OF TECHNOLOGY PRESS

世界建筑 7

World Architecture 7

Apartment Building

公寓建筑设计

佳图文化 编



华南理工大学出版社
SOUTH CHINA UNIVERSITY OF TECHNOLOGY PRESS

·广州·

图书在版编目 (CIP) 数据

世界建筑 7: 公寓建筑设计 I / 佳图文化编. —广州: 华南理工大学出版社, 2013. 3
ISBN 978-7-5623-3854-3

I. ①世… II. ①佳… III. ①住宅—建筑设计—作品集—世界 IV. ①TU206

中国版本图书馆 CIP 数据核字 (2013) 第 013091 号

世界建筑 7: 公寓建筑设计 I

佳图文化 编

出 版 人: 韩中伟

出版发行: 华南理工大学出版社

(广州五山华南理工大学 17 号楼, 邮编 510640)

<http://www.scutpress.com.cn> E-mail: scute13@scut.edu.cn

营销部电话: 020-87113487 87111048 (传真)

策划编辑: 赖淑华

责任编辑: 王 岩 赖淑华

印 刷 者: 广州市中天彩色印刷有限公司

开 本: 1016mm×1370mm 1/16 印张: 17

成品尺寸: 245mm×325mm

版 次: 2013 年 3 月第 1 版 2013 年 3 月第 1 次印刷

定 价: 298.00 元

Preface

Apartment building, is a kind of residential building housing self-contained housing units. This volume has collected the apartment buildings by the famous architects from USA, Italy, France, Turkey, Mexico, Austria, Germany, the Netherlands, Spain, UAE, Israel, etc. All these projects are presented with hand drawings, design drawings, renderings, sections, detail drawings, construction drawings and high-resolution photographs, interpreting the characteristics of this kind of buildings from their design ideas, plannings, functions, facade designs, details and solutions.

High-rise Apartment

Contents

001 High-rise Apartment

Loft Gardens	002
Portofino Residential Condominiums	006
Real del Bosque Residential Complex	012
Prisma	018
River Front Housing (Phase II), Santa Coloma de Gramenet	030
Apartment Building on the Harbour	038
BAD Bloc d' habitatges a Badalona	044
Jakarta Luxury Apartments	050
Forfar	054
Cosmopolitan	060
Fourth & Madison	068
Proposed Erection Of 17-Storey Block Of Flats With A Basement & Swimming Pool	072

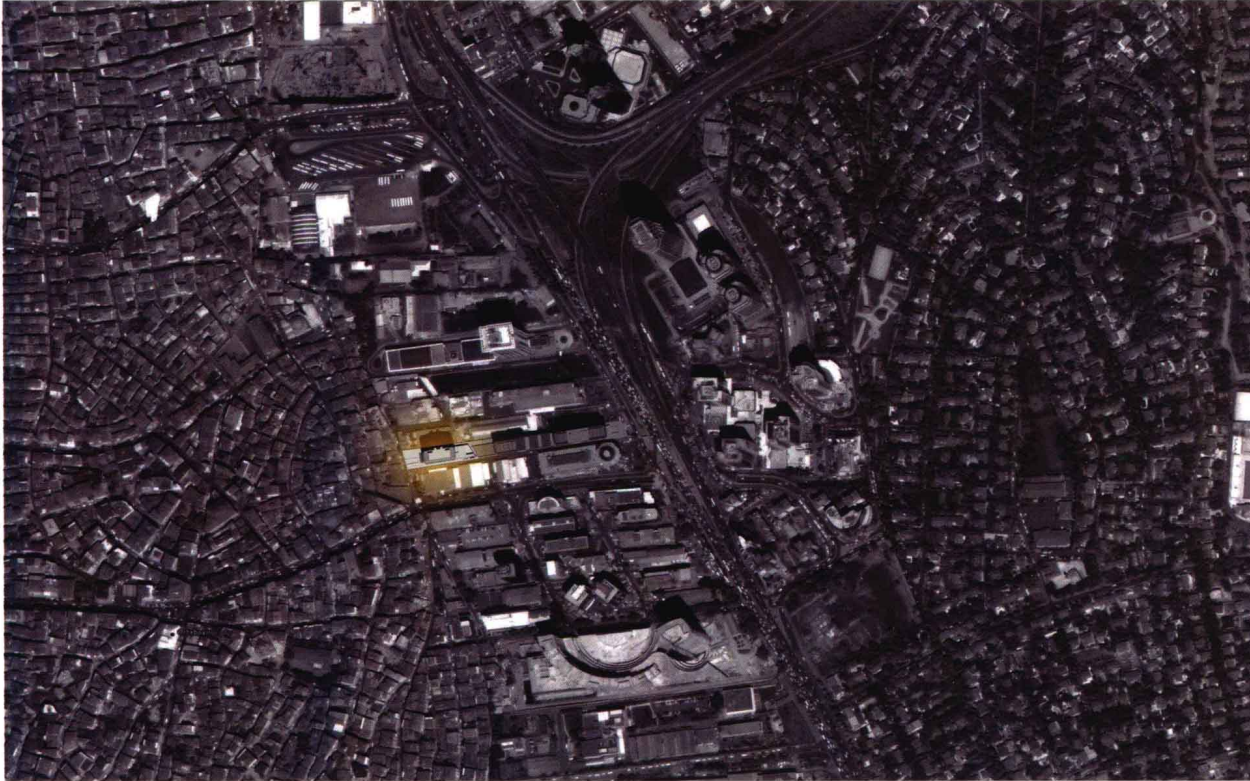
076 Innovative Apartment

Multi-Generational Living	078
Terrace House Tokiostrasse	088
JOH 3 - Apartment house Johannisstraße 3	100

Corti Nuove Building	110
New Civil Guard Barracks House	118
Can Bisa House	128
Blok K	134
Heirloom	146
Fuller Lofts	150
Basket Apartments in Paris	156
Apartment Building in Via Messina	174
Latticework Apartment Block	186
Montpellier Housing	194
Residential Building C	202
K.I.S.S.	210
Edificio Acqua	218
Athletes Village Plot N13, London Olympics 2012	226
Apartment Blocks in Nanterre	236
Roller Coaster	248
Zigzag Apartment	260

Convenient city location
Wide variety of units
Public space
Safety

Loft Gardens



In the hearth of Istanbul, a 10,000 years old habitat, yet a city of youthful dynamism with its eye on the high-tech future and innovations, Levent Loft project faces requirements of the today's city-life within the concept of loft.

Following the first Levent Loft, a transformation project on Maslak-Levent axis, at the CBD of Istanbul, Levent Loft II is designed in the concept of "soft loft".

The mid-rise transparent residence block, with its vertical gardens, will emerge at the back end of Levent Loft I-a narrow horizontal structure-to create another cohesive and lively alcove.

Comprised of loft apartments at various size and forms, with large wall of windows and high ceilings, the residential offers alternative layouts for distinctive requirements.

In the understanding of loft style, exposed ductwork, plumbing, beams, concrete flooring, masonry and corrugated steel elements are kept in the spirit of openness and creativity that are integral to loft design. Still, to offer more conventional condo-like feel and to provide high energy efficiency, such basics of loft are preferred with softer edges, including partial drywall encasements; the upscale loft apartments have defined spaces, especially bedrooms, fine flooring and they feature high end kitchen and bathroom fixtures and finishes whilst the key elements of openness and versatility in loft design are respected.

The 21-storey building is nature friendly with private walkout terraces, balconies and garden patios. The loft apartments have floor-to-ceiling, one-piece, energy efficient windows opening to the Bosphorous and the city panorama. Wealth of natural light creates more commodious and ambient spaces.

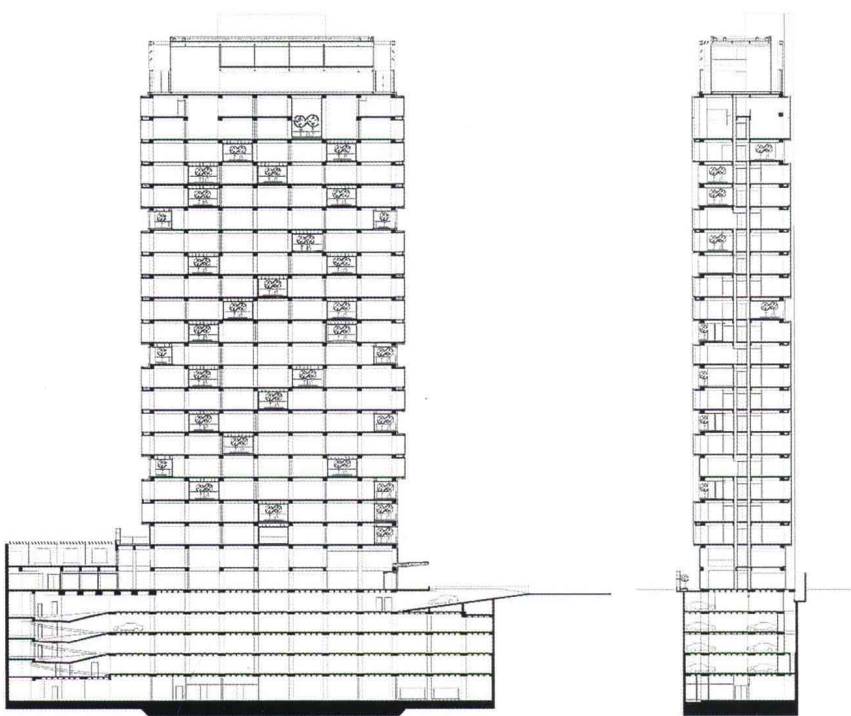
Facilities like the large underground car park, personal storage, central heating and ventilation, security, maintenance services and "intelligent house" system grant a user-friendly environment and easy access. The complex, supported by the recent technologies and professional service administration, offers a comfortable and fashionable life-style.

Loft II is steps to shopping, cafes and restaurants; the subway stop is only one block away; the loft life style is convenient especially for hardworking young people in search of a more liberal living-form, who needs to save time at home for social activities.

The building is not only designed as a housing facility but also it is planned to be a high quality social venue.

Location: Istanbul, Turkey
Client: Akfen Gayrimenkul Yatırımları ve Ticaret A.Ş. Sağlam İnşaat Taahhüt Ticaret A.Ş.
Architect : Melkan Gürsel & Murat Tabanlıoğlu
Architectural Project Team: Hacer Akgün, Volkan Lokumcu, Eda Lerzan Tunçbil, Kaan Keleş, Elena Pittalis, Süleyman Akkaş
Site Area: 1,759 m²
Construction Area: 22,500 m²
Photography: Helene Binet





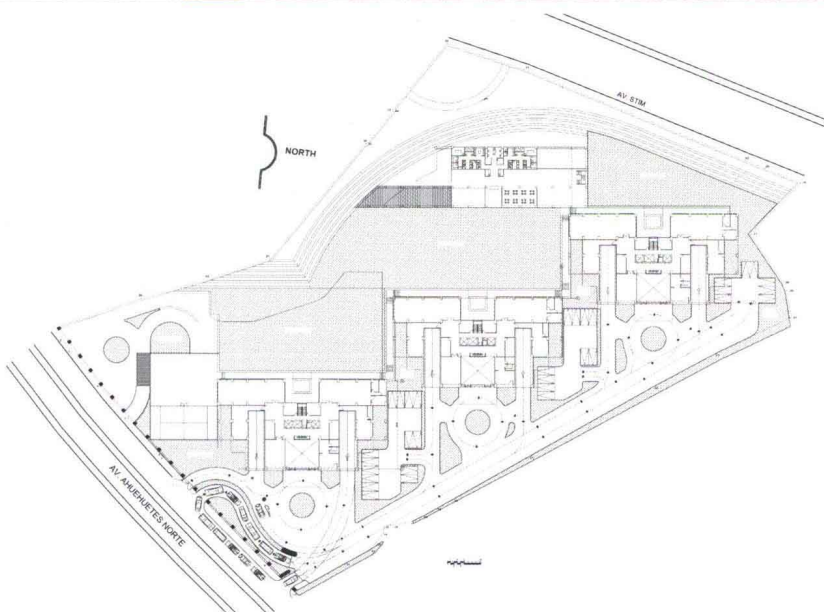
kesit / section
0 5 10 15



Portofino Residential Condominiums



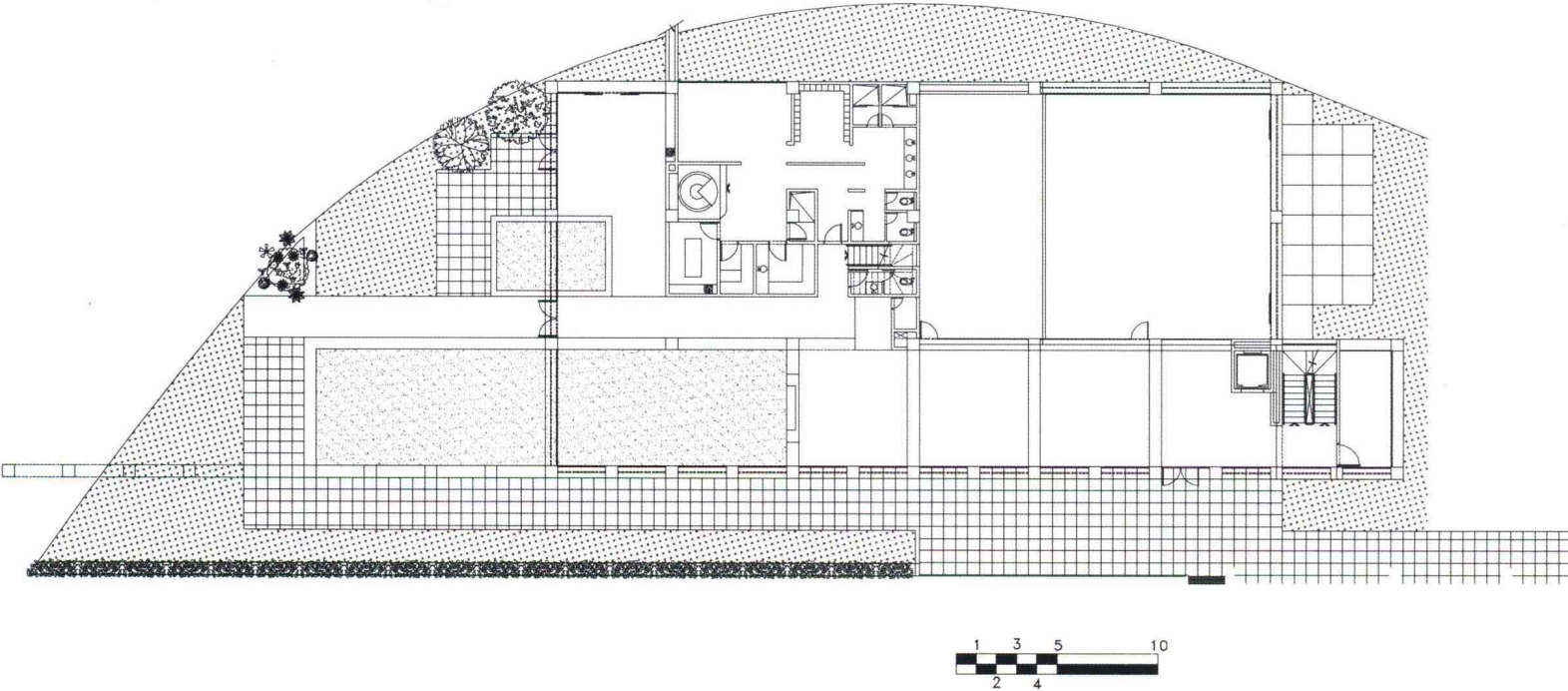
Location: Bosques de las Lomas, México City
 Architectural Design: PASCAL Arquitectos
 Extensión area: 30,000 m²
 Photography by: Jaime Navarro

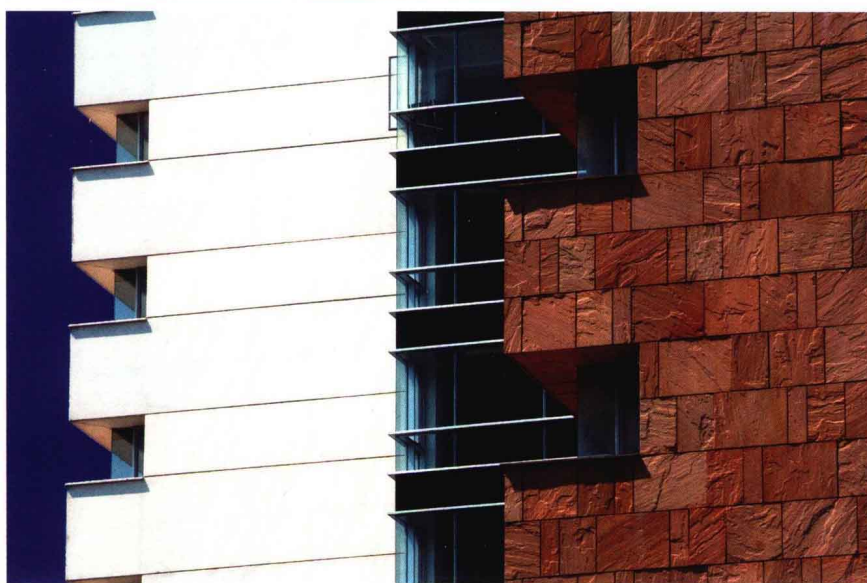
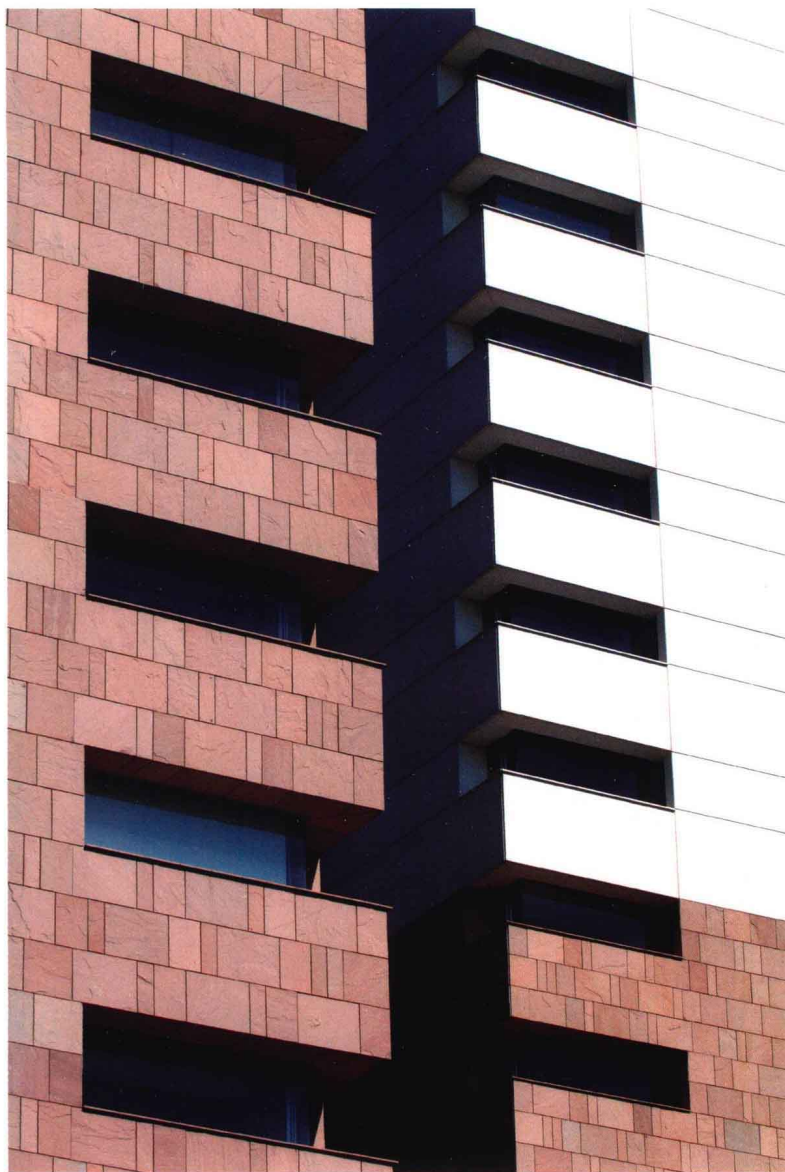


Portofino condominium is located in an exclusive residential area in Mexico City. It occupies a 15,000 m² terrain with deep slopes with 30,000 m² of construction.

This project includes three apartment towers, and a common area with panoramic views. Also, as a complementary service to the complex apartments, it has a club house situated independently from the towers.

The shape of the towers is symmetrical, like a regular prism, that shows a change of material at the middle of its height, displaying at the beginning beige hindu sandstone and on the upper section white concrete precast, obtaining a lighter visual effect and the urban integration with





the rest of the surrounding buildings which are lower and coincide with the ground level.

Each apartment is 450 m² containing a living room, a dining room, a kitchen, a family room, a services area and three bedrooms with bath and dressing room.

The club house counts with a ballroom for 350 people, a business center, tennis courts, a complete spa, a swimming pool, a gym, a beauty parlor, a playground and a small supermarket.

