

Asian Interiors

亞洲室內

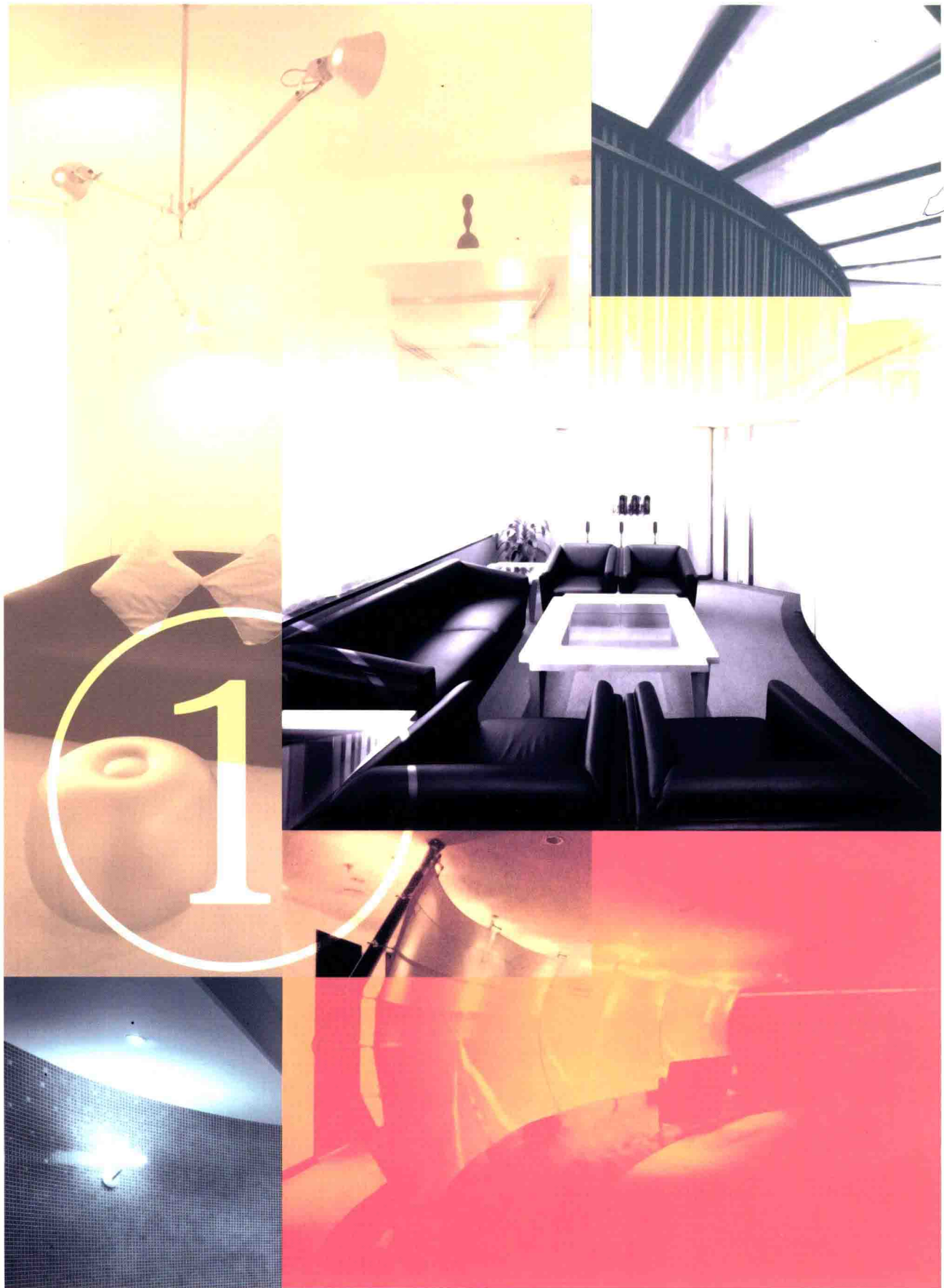
1

辦公室

Corporate

住宅

Residential



Pace Publishing Limited

亞洲室內（一）乃貝思出版有限公司全資擁有。所有圖文皆有版權，非經書面同意不得轉載。

All rights reserved. No portion of "Asian Interiors I" may be reproduced or transmitted in any form or by any means, electronic or mechanical, including photocopying, recording, or any information storage or retrieval system, without prior permission in writing from the publisher.

貝思出版有限公司 1998 年第 1 版第 1 次印刷

First published in 1998 by Pace Publishing Limited

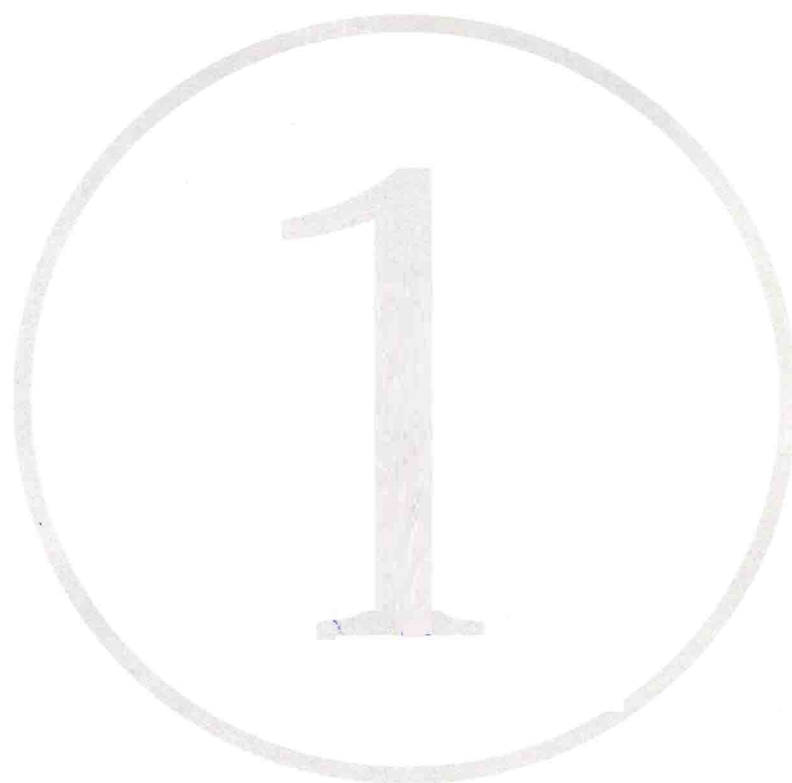
ISBN 962-7723-12-6

香港印刷

Printed in Hong Kong

Asian Interiors

亞洲室內



中文編輯：廖淑勤，周慧芳

英文編輯：戴芸

封面設計：湛子榮

出版社：貝思出版有限公司

Chinese Editor: Amy Liu, Fiona Chau

English Editor: Raka Dewan

Cover design: Chi Wing Cham

Publisher: Pace Publishing Limited

目錄

辦公室

偉安室內建築設計有限公司 粵海啤酒集團有限公司 粵海投資有限公司	8	MLTD 有限公司 MTLD 有限公司	75
達思 荷蘭銀行 西德意志洲銀行	12	金倫設計工程 友嘉科技股份有限公司	77
EDGE 建築及室內設計 香港建築師學會及建築師註冊管理局 奧美廣告亞太區辦事處	22	Pakatan Reka Arkitek PRA 辦公室	80
泛太國際股份有限公司 泛太國際股份有限公司	32	深圳市玉兔裝飾精品有限公司 深圳市玉兔裝飾精品有限公司	83
Gensler International (HK) Ltd. 麥當勞中國發展公司 Seaboard Eastern 保險公司 泰克香港有限公司	37	漠沙 - 楊建築與規劃設計事務所 Conoco	87
霍克國際 (亞洲太平洋) 有限公司 北方電訊	48	德設計師事務所有限公司 德設計師事務所有限公司	90
創建顧問有限公司 創建顧問有限公司	54	竹中香港有限公司 日本電信電話有限公司 香港新力	93
羅遜公司室內設計師 港威二期示範套間	59	TCH + Associates Ltd. 台灣某辦公室	102
林周梁建築師有限公司 林周梁建築師有限公司	61	迪馬設計顧問有限公司 Creative Technology Tourism Court	106
穆氏設計規劃 (香港) 有限公司 3Com 亞洲有限公司 安泰國際公司 羅馬銀行	64	Tonkin Design Ltd. Frontworks Redoute Asia Ltd.	110

住宅

01 富欣花園 石澳村	118	洪約瑟設計事務所有限公司 淺水灣道 37 號 陽明山住宅 華景山莊	154
Alison Henry Design Ltd. 淺水灣道 3 號住客會所	122	若煒 雅樂居示範單位 峰景	172
建藝設計有限公司 淺水灣暨宅	124	Red 陽明山莊	181
何銘斌 碧湖花園 大坑住宅	132	梁錦標設計樓 麗峰花園 樂景園 何文田住宅	185
Dakota Design Ltd. 赤柱住宅	143	TCH + Associates Ltd. 壽臣山村道複式住宅 怡園	194
陳世溶 匯翠台	149	Tonkin Design Ltd. 樂景台	202

Contents

Corporate

C&A Interior Architects & Consultants Ltd.	8	AEtna International Inc.	
Guangdong Brewery Holdings Ltd.		Banca Di Roma	
Guangdong Investment Ltd.		MLTD & Associates Ltd.	75
Davenport Campbell	12	MLTD & Associates Ltd.	
ABN-AMRO Bank		N. S. W Design Company Ltd.	77
Westdeutsche LandesBank		Sirus Technology Corporation	
EDGE	22	Pakatan Reka Arkitek	80
The Hong Kong Institute of Architects & Authorised Registration Board		Pakatan Reka Arkitek	
The Ogilvy & Mather Asia Pacific Regional Office		Shenzhen Yutu Fine Arts Company Ltd.	83
Funtastic International Inc.	32	Shenzhen Yutu Fine Arts Company Ltd.	
Funtastic International Inc.		T. R. Hamazah & Yeang Sdn. Bhd.	87
Gensler International (HK) Ltd.	37	Conoco	
McDonald's China Development Company		Tak Design & Associates Ltd.	90
Seaboard Eastern Insurance Company Inc.		Tak Design & Associates Ltd.	
Tektronix HK Ltd.		Takenaka Hong Kong Ltd.	93
HOK International (Asia Pacific) Ltd.	48	Nippon Telegraph and Telephone Corporation	
Nortel		Sony Hong Kong	
INS Consultants Ltd.	54	TCH + Associates Ltd.	102
INS Consultants Ltd.		Corporate Office in Taiwan	
Lawson & Company Interior Designers	59	Tema Colecciones International Pte Ltd.	106
The Gateway II Showsuite		Creative Technology	
LCL Architects Ltd.	61	Tourism Court	
LCL Architects Ltd.		Tonkin Design Ltd.	110
M. Moser Associates Ltd.	64	Fontworks	
3Com Asia Pty Ltd.		Redoute Asia Ltd.	

Residential

01	118	Joseph Sy & Associate Ltd.	154
Harmony Garden		37 Repulse Bay Road	
Shek O Village		Residence in Yang Meng San	
Alison Henry Design Ltd.	122	Wonderland Villas	
3 Repulse Bay Road Clubhouse		Nobel Design Holdings Ltd.	172
Builtart Design Ltd.	124	Gallop Gables Showhouse	
Kei's House, Repulse Bay		The Hillside	
Bun Ho	132	Red	181
Avon Park		Parkview	
Residence in Tai Hang		Setmund Leung Design & Planner	185
Dakota Design Ltd.	143	Angel Court	
Residence in Stanley		Broadview Villa	
Edmund Chan	149	Residence in Ho Man Tin	
Greenway Terrace		TCH + Associates Ltd.	194
		Duplex Apartment, Shouson Hill Road	
		Woodland Heights	
		Tonkin Design Ltd.	202
		Happy View Terrace	



Corporate 辦公室

粵海啤酒集團有限公司

Guangdong Brewery Holdings Ltd.

設計公司

偉安室內建築設計有限公司

Design Firm

C&A Interior Architects & Consultants Ltd.

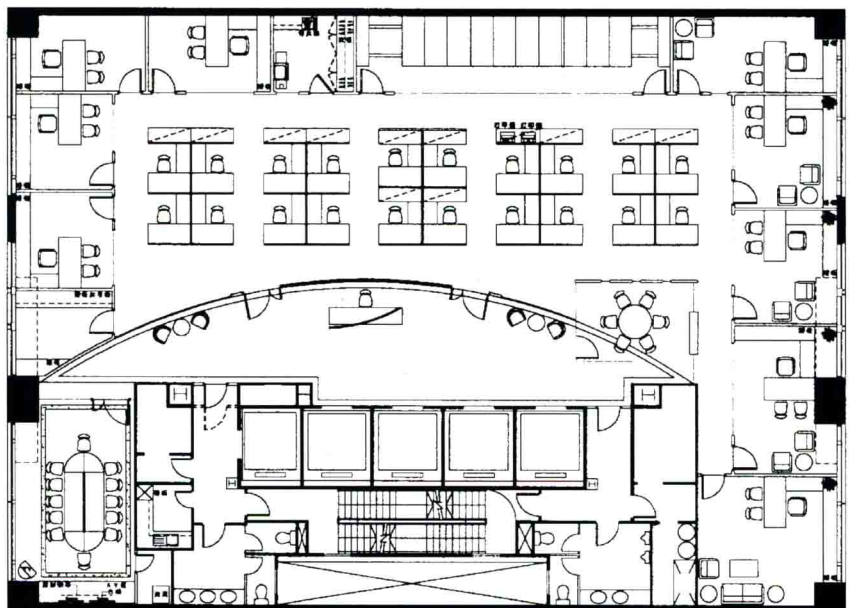
粵海啤酒集團有限公司的辦公室面積約 465 平方米，繼續採用母公司的形象為設計標準，但要有節制的保持線條簡潔明亮。

接待處的弧形牆由玻璃、木材、石材互相交織垂直砌成。柔和的淡灰色調與 makore 木裝飾融為一體，與間接照明一起對這個敞開式辦公室起了強調作用。

The 465 sq. m. office continues the design standards established in their corporate office but in a low key tone with clean and simple lines.

The curved wall in the reception area has overlapping materials composed of glass, wood and stone on a vertical surface. The open office has as highlights indirect architectural lighting, and soft grey palette fused with makore wood finish.





粵海投資有限公司

Guangdong Investment Ltd.

設計公司

偉安室內建築設計有限公司

Design Firm

C&A Interior Architects & Consultants Ltd.

粵海投資有限公司面積達 1,858 平方米，由於天花板高度有限，委托人要求踏出電梯時必須給人富有生氣的感覺。佔有兩層樓的辦公室除了要有高效率的流通外，在設計方法和選材上也必須一致。

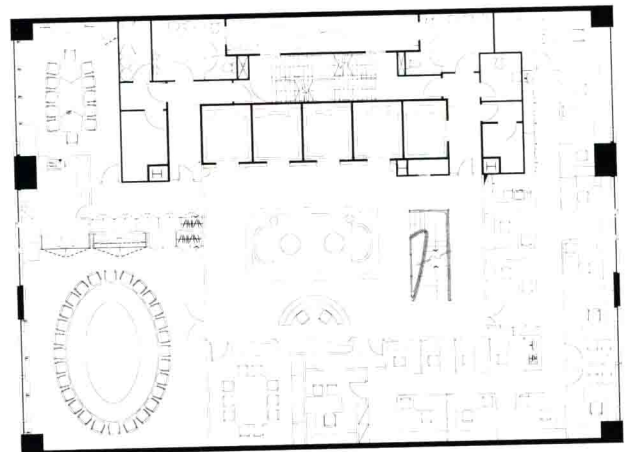
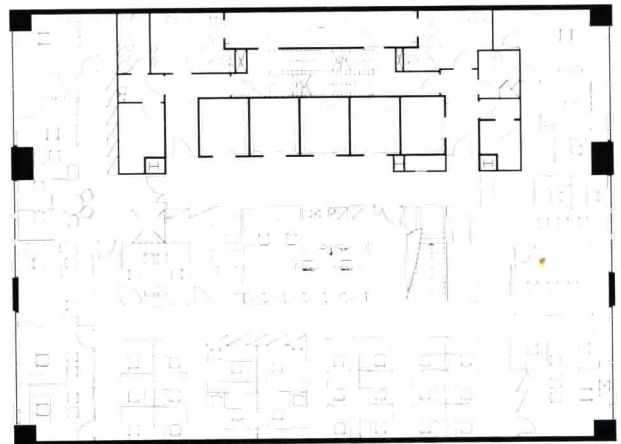
對設計組來說，最大的挑戰是必須處理高度較低的天花板。為使辦公室產生一種寬敞的視覺效果，設計師引進了天窗的效應。大量使用木料、不銹鋼和玻璃，呈現出一個井井有條又富有傳統風格

的辦公室。在接待處大堂，公司標誌鑲在有莊嚴深棕色大理石框的玻璃牆上，十分突出，讓來訪者產生一種受歡迎的感覺。

Guangdong Investment Ltd. occupies 1,858 square metres. The client required a dynamic approach straight from the lift while retaining the given ceiling height. The two-level office needed to have a consistent concept of design and materials as well as an efficient circulation.

A major challenge facing the design team was the relatively low ceiling height of the building. To generate a visually spacious office, a skylight effect was applied. The extensive use of timber, stainless steel and glass projects the feel of an organised and conservative corporate office. In the reception area, the corporate logo stands out against the glass wall framed with dark Imperial Brown Marble giving visitors a gesture of welcome.





荷蘭銀行

ABN-AMRO Bank

設計公司

達思

Design Firm

Davenport Campbell

荷蘭銀行新的亞洲總部位於新加坡，其內部設施無論是從美學還是功能方面來看都已達國際標準。

銀行的新營業部面積超過 16,704 平方米，容納了荷蘭銀行的地區總部及其新加坡分行的辦公室。

委托人要求盡用這新的 15 層樓營業部，不但要滿足目前需求，而且還要具有靈活性。設計師把入牆家具減至最少，盡量選用不固定的家具、存檔和

儲存系統。為便於重新配置，工作檯都以桌子為本，而不以面板為本，數據和供電的纜線都保持在被限制的網格之內。

營業部有一個底層零售營業大堂連同一個總營業櫃檯，外加整套裝在一起的顧客服務桌，在這裡，客戶能面對面跟客戶服務部主管交談，在舒適和私密的環境中討論他們的生意。營業大堂用格子花紋瑞士梨木分隔屏隔開，連同奶油色大理石、玻璃和鋼鐵，使空間具有

The Dutch multinational merchant bank, ABN-AMRO, has relocated its new Asian headquarters to Singapore. The facility boasts an interior of international standards, both in aesthetic and functional terms.

ABN-AMRO's new facility measures over 16,704 sq. m. and houses ABN-AMRO's regional head office and its Singapore branch office.

The client required optimal use of its new 15-storey facility, not only to meet its current needs but also to incorporate flexibility. The designers minimised the built environment within the building, opting wherever possible for loose furniture, filing and storage systems. For ease in



reconfiguring, workstations are desk-based, rather than panel-based, and data and power cabling has been kept within a confined grid.

The facility includes a ground floor retail banking hall, with a general banking counter in addition to self-contained customer service desks, which provides an area where clients can meet face-to-face with one of the Bank's client service officers to discuss their business in comfort and privacy. The banking hall features large dividing screens in Swiss Pearwood with a grid motif, together with cream marble, glass and steel, which gives the space a light, clean ambience. These finishes and the grid-motif screen have been repeated

throughout the facility, to give the entire space a coherent flow.

The Bank's conference centre is located on level 14 which houses several conference rooms, a video-conferencing centre, a large boardroom and an auditorium with capacity to seat 100. It also houses a commercial-scale kitchen and dining room. Many of the partitions within this floor are glass to allow natural light to reach the building core.

明亮和乾淨的氛圍。這些裝飾和格子花紋屏風在整個營業部裡不斷重複，賦予整個空間一種連貫的和諧。

銀行的會議中心設在第 14 層，那兒有幾間會議室、一個視像會議中心、一個大的董事會會議室和一個能容納 100 人的禮堂。此外，還設有一個具商業規模的廚房和餐室。這層許多隔板都是玻璃的，以便引入自然光。







