

中国旅游全览

A COMPLETE GUIDE SERIES OF TRAVEL & TOURISM IN CHINA

神秘的香格里拉

SHANGRI-LA

中国旅游出版社

中国旅游全览
A COMPLETE GUIDE SERIES OF TRAVEL & TOURISM IN CHINA

神秘的香格里拉

SHANGRI-LA

中国旅游出版社·云南省人民政府新闻办公室·云南省外文书店 编
China Travel & Tourism Press·Yunnan People's Government Press Office·Yunnan Foreign Languages Bookstore

中国旅游全览编委会

主任:何光晔

副主任:程文栋 孙刚 佟华龄 陈有生 常振国

《神秘的香格里拉》编委会

编委:顾伯平 段汇成 李 宁

责任编辑:张 锋

文字:常振国 龚正嘉

翻译:王东梅 程伟进

地图绘制:傅马丽

装帧设计:张 锋 王卫东 杨毅

摄影:张 锋 谭 明 和桂华 徐晋燕

刘建明 杨发顺 马晓峰 杨 杰

秦凤京 刘伟雄 方振东 李 信

赵酒栋 廖可夫 任起瑞 张培德

晋守贤 武跃宏 林受里 赵 汀

张 捷 廖国忠 张全华 王笑影

严 江 王文胜 迟 胜 陈克勤

石 冰

图书在版编目(CIP)数据

神秘的香格里拉/张锋等摄影. - 北京:中国旅游出版社,1999.4

ISBN 7-5032-1620-4

I. 神… II. 张… III. 摄影集-云南-香格里拉 IV. J42
6.74

中国版本图书馆 CIP 数据核字(1999)第 10181 号

《神秘的香格里拉》

出版发行:中国旅游出版社

地 址:北京建国门内大街甲九号

邮 编:100005

版 次:1999 的 4 月第 1 版

印 次:1999 年 4 月第 1 次

开 本:850 × 1168 毫米 1/12

印 张:8

印 数:1—10000 精装:008800 平装:007300

(版权所有 翻版必究)



目 录

CONTENTS



香格里拉——人世间最殊胜的地方	4
Shangri-La—the incontaminated dreamland for you to explore.	4
云南第一峰	14
The Highest Peak in Yunnan	14
白茫雪山自然保护区	18
Baimang Snowcapped Mountain Nature Reserve	18
中甸	22
Zhongdian	22
碧塔海自然保护区	32
Bitahai Lake Nature Reserve	32
硕都海	36
The Shuoduhai Lake	36
纳帕海自然保护区	42
Napahai Nature Reserve	42
白水台	54
Baishui Terraces	54
松赞林寺	58
Songzanlin Monastery	58
东竹林寺	64
Dongzhulin Monastery	64
赛马会	80
Horse Race	80

中国旅游全览
A COMPLETE GUIDE SERIES OF TRAVEL & TOURISM IN CHINA

神秘的香格里拉

SHANGRI-LA

中国旅游出版社·云南省人民政府新闻办公室·云南省外文书店 编

China Travel & Tourism Press·Yunnan People's Government Press Office·Yunnan Foreign Languages Bookstore

中国旅游全览编委会

主任:何光晔

副主任:程文栋 孙刚 佟华龄 陈有生 常振国

《神秘的香格里拉》编委会

编委:顾伯平 段汇成 李 宁

责任编辑:张 锋

文字:常振国 龚正嘉

翻译:王东梅 程伟进

地图绘制:傅马丽

装帧设计:张 锋 王卫东 杨毅

摄影:张 锋 谭 明 和桂华 徐晋燕

刘建明 杨发顺 马晓峰 杨 杰

秦凤京 刘伟雄 方振东 李 信

赵酒栋 廖可夫 任起瑞 张培德

晋守贤 武跃宏 林受里 赵 汀

张 捷 廖国忠 张全华 王笑影

严 江 王文胜 迟 胜 陈克勤

石 冰

图书在版编目(CIP)数据

神秘的香格里拉/张锋等摄影. - 北京:中国旅游出版社,1999.4

ISBN 7-5032-1620-4

I. 神… II. 张… III. 摄影集-云南-香格里拉 IV. J42
6.74

中国版本图书馆 CIP 数据核字(1999)第 10181 号

《神秘的香格里拉》

出版发行:中国旅游出版社

地 址:北京建国门内大街甲九号

邮 编:100005

版 次:1999 的 4 月第 1 版

印 次:1999 年 4 月第 1 次

开 本:850 × 1168 毫米 1/12

印 张:8

印 数:1—10000 精装:008800 平装:007300

(版权所有 翻版必究)



目 录

CONTENTS



香格里拉——人世间最殊胜的地方	4
Shangri-La—the incontaminated dreamland for you to explore.	4
云南第一峰	14
The Highest Peak in Yunnan	14
白茫雪山自然保护区	18
Baimang Snowcapped Mountain Nature Reserve	18
中甸	22
Zhongdian	22
碧塔海自然保护区	32
Bitahai Lake Nature Reserve	32
硕都海	36
The Shuoduhai Lake	36
纳帕海自然保护区	42
Napahai Nature Reserve	42
白水台	54
Baishui Terraces	54
松赞林寺	58
Songzanlin Monastery	58
东竹林寺	64
Dongzhulin Monastery	64
赛马会	80
Horse Race	80

香格里拉——人世间最殊胜的地方

Shangri-La—the incontaminated dreamland for you to explore

香格里拉,一个美丽而又动听的名字;一个神奇而又令人迷幻的地方。

自从英国人詹姆士·希尔顿的小说《失去的地平线》问世以来,你曾引起无数人的追寻和向往,而留下的却只是感叹和遗憾……

整整半个世纪过去了。你那仙境般、梦幻般的美丽与纯净却始终不能让人忘怀。千万里寻觅,千万次呼唤,终于有一天,在世界最高的高原——青藏高原的东南边缘,人们找到了你!

你,就是中国的迪庆——人们“心中的日月城”!

不知该用怎样的步履走进你的领地,
不知该用怎样的仪式揭开你的面纱,
不知该用怎样的眼光审视你的世界,
不知该用怎样的心灵与你交流?!

你是那样的高傲,是“太阳最早照耀的地方。”近百座冰雪覆盖的山峰,千里绵亘,气势磅礴,团团簇拥在你的身旁。“太子十三峰”,峰峰都在 6000 米以上。一座比一座险峻,一座比一座神秘。八大神山之首的卡格博峰,俗称“雪山之神”,巍然挺立,横亘天际。近百年来,人们曾无数次地让 8848 米的世界第一高峰——珠穆朗玛峰伏首称臣,但时至今日,却没有人能攀上这座仅有 6740 米的卡格博峰的峰顶。

你是那样的娇美,“是太阳月亮交辉的地方”。纵横交错的河道,把广袤无垠的大草原神奇般地裁为八块,恰似吉祥的八瓣莲花。那遍地的牛羊,盛开的鲜花,远处的白云、积雪,近处的森林、村舍,湛蓝如镜的湖泊,清脆嘹亮的山歌,交织融汇在一起,活生生一幅天然画卷。

你是那样的神奇,是“人世间最殊胜的地方”。一亿年以前,欧亚板块与印度板块相撞,在翻天覆地之中,你随着喜马拉雅群山传奇似的从古特提斯海中渐渐升起,一片汹涌奔腾的大海,瞬间变化成起伏连绵的山峰。地僻天高,构筑了你独特的地理与自然环境,造就了你与世不同的传统与文化。粗犷简朴的田园式生活,真挚、超凡的人际关系,虔诚、执著的宗教信仰,豪放、善良的民族性格……这一切一切,都

在向人们展示着你的精神,你的价值,都在诱惑人们去孜孜探究你的朴实但却充满神奇的人生哲理。

当我通过摄影大师们的镜头轻轻地、轻轻地走进你的世界,看到明媚的阳光下,那漫山遍野的杜鹃、龙胆,那一山连一山的栎树、秃杉,那清澈秀丽的湖泊,那金碧辉煌的庙宇……我的心颤动了!当我看到神圣庄严的“大祈祷法会”,看到纳西人书写的东巴(象形)文字,看到藏胞跳起“热巴”舞蹈,看到彝家姑娘脸上灿烂纯朴的欢笑……我的整个灵魂陶醉在这古老而又深邃,凝重而又质朴的传统与文化之中。

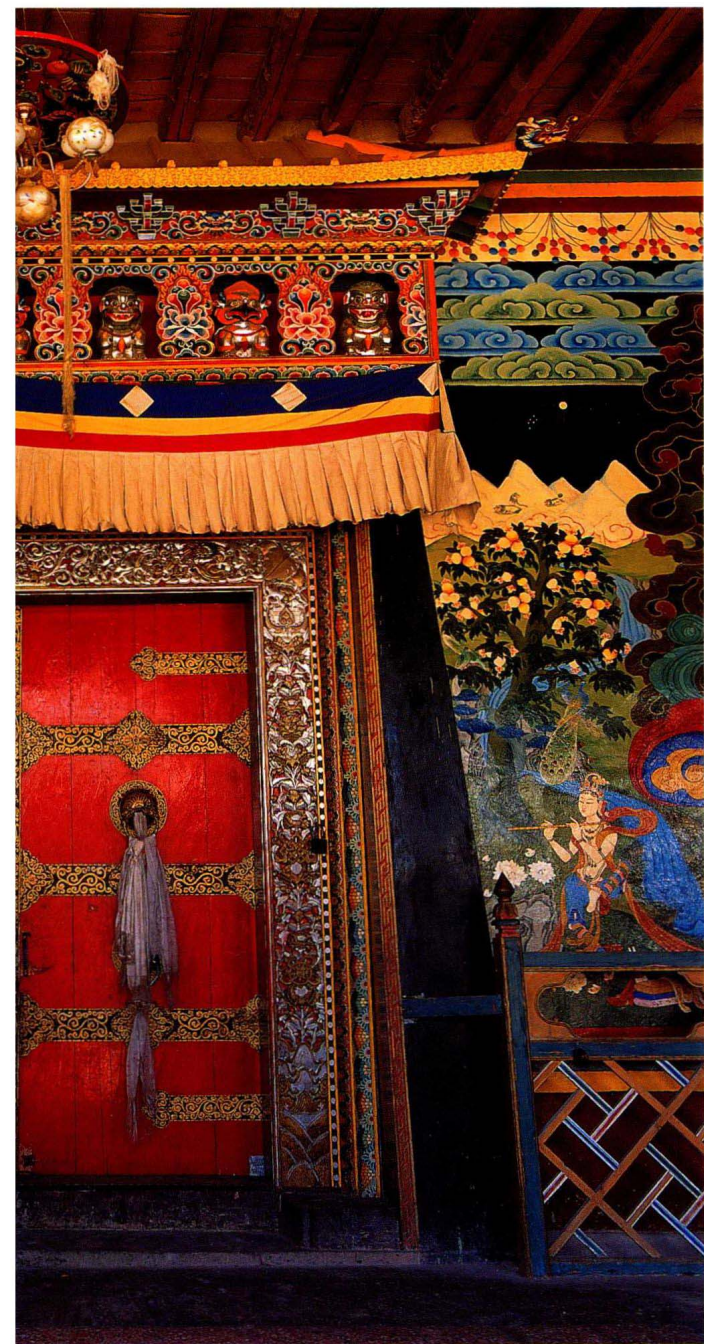
啊,香格里拉!我是多么渴望立刻就投入你的怀抱,温暖久已疲惫冷漠的心灵,洗去身上玷污的铜臭,溶入大自然的造化之中,步入天人合一的仙境……

常振国

It was the British writer James Hilton's novel "The Lost Horizon" that has brought fame to an unknown and incontaminated place Shangri-La and made it a household word since its publication 50 years ago. And from then on this fascinating place has become the dreamland for many tourists and adventure lovers. According to the novel, the incontaminated nature and folklore of Shangri-La would never fail to impress a special emotion into these who encounter it: the clear air, the nearer white clouds in the blue sky, the breathtaking beauty of landscape and the warm heart of the honest and unsophisticated local people would certainly soothe the body and allow the mind to rest.

Dozens of years witnessed the failure of efforts to seek out and locate for certain this dreamland. However, with the passing of time, people's believe that it must be somewhere in the southeast tip of the Qinghai-Tibet Plateau,





神秘的大门

The mysterious gate of the Dongzhulin Monastery

the highest plateau in the world, became firmer with more and more evidences as a result of persistent search and research. At last, a few years ago, the government of Yunnan Province declared the discovery of Shangri-La. It is in "Diqing", now a prefecture in Yunnan Province, China.

It is true Diqing, deep in contact with nature, is the right place where one can rest at ease in the green shelter provided by the woods, relax next to the crystal clear waters of the alpine lakes or let the eyes wander towards the impressive snowcapped peaks surrounding the area. The area of Shangri-La provides the possibility to enjoy unforgettable moments without any stress and confusion but excitement while enveloped in a natural environment which is remarkably charming and overwhelmed in an aura of honesty and hospitality of the local ethnic groups which is unforgettably touching.

Shangri-La is also a paradise for mountaineers. There are nearly one hundred snowcapped peaks which are a constant challenge irresistible to mountain climbers. Among these peaks, the Thirteen Princes are all over 6000 metres high and among the most mysterious and precipitous. The Kagebo Peak, known as "Chief of the Eight Sacred Peaks", soars up as high as 6740 metres and towers its surrounding mountains. In the 20th century, mankind has set foot on top of the Everest for many times but has failed to conquer the Kagebo Peak.

For long in the heart of those who have been eager to encounter it, Shangri-La has been a wonder worked by nature and a place "full of sunshine and moonlight". It plays as the meeting point of the sun and the moon, time and again embraces beautiful flowers, white clouds, snow-capped mountains, untouched forests and mirror tranquil alpine lakes. Spotted over its vast green grassland are villages inhabited mainly by Tibet-

an, Naxi, Lisu ethnic groups. The grassland has been divided magically into eight pieces like eight petals of a lotus flower by crisscross rivers and has provided a wonderful habitat for both animals and human beings. Yaks and sheep are easily seen grazing themselves and playing on the grassland; tree-shaded villages of white houses are scattered over the prairie; the fragrance of buttered tea blended with the fresh air exerts a temptation on those who encounter it; the melodious pastoral songs by herdsmen in colourful costumes can be heard here and there—all these create a charming and unparallel mosaic and possibly drive one into an ecstasy of enjoyment.

One hundred million years ago, the area of Shangri-La began to come out of waters along with the rising of the Himalayas from the bottom of the sea, which was brought about by the collision of the Eurasian Plate and the Indian Plate. This unique geographical and natural environment has formulated the different tradition and culture of the residents. Shangri-La features the simple but peaceful life, the friendly and honest interpersonal relationship, the pious and persistent religious believe, the kind, uninhibited and unsophisticated characters of the local people.

The photographs in this book, no doubt, will give you an impression that Shangri-La — Diqing is a place that has for long appeared in your dream. It is our sincere hope that this book will be of some help in the realisation of your such a long cherished dream.

第 6-7 页图:梅里雪山

P6-7: The Kagebo Peak of the Mount Meili

第 8-9 页图:高原草甸春意浓

P8-9: Highland grassland in spring

第 10-11 页图:海拔 3740 米的硕都海

P10-11: The Shuoduhai Lake with an altitude of 3740 metres













澜沧江峡谷
The Lancang River Valley



