

COLLECTION OF THE 19TH ASIA-PACIFIC INTERIOR DESIGN AWARDS

第十九届亚太区室内设计大奖参赛作品选

SAMPLE SPACE + LEISURE & ENTER- TAINMENT SPACE

样板空间+休闲娱乐空间

翟东晓 / 深圳市创福美图文化发展有限公司 编著
大连理工大学出版社

METTO

COLLECTION OF THE 19TH ASIA-PACIFIC INTERIOR DESIGN AWARDS

第十九届亚太区室内设计大奖参赛作品选

SAMPLE SPACE + LEISURE & ENTER- TAINMENT SPACE

样板空间+休闲娱乐空间

翟东晓 / 深圳市创福美图文化发展有限公司 编著
大连理工大学出版社

METTO

图书在版编目 (CIP) 数据

第十九届亚太区室内设计大奖参赛作品选·样板空间
+ 休闲娱乐空间: 英汉对照 / 翟东晓, 深圳市创福美图
文化发展有限公司编著. — 大连: 大连理工大学出版社,
2012.12

ISBN 978-7-5611-7358-9

I. ①第… II. ①翟… ②深… III. ①室内装饰设计—亚太地区—图集②住宅—室内装饰设计—亚太地区—图集③文娱活动—公共建筑—室内装饰设计—亚太地区—图集 IV. ① TU238-64 ② TU241-64 ③ TU242.4-64

中国版本图书馆 CIP 数据核字 (2012) 第 233826 号

出版发行: 大连理工大学出版社

(地址: 大连市软件园路 80 号 邮编: 116023)

印 刷: 利丰雅高印刷(深圳)有限公司

幅面尺寸: 242mm × 263mm

印 张: 18

插 页: 4

出版时间: 2012 年 12 月第 1 版

印刷时间: 2012 年 12 月第 1 次印刷

责任编辑: 裘美倩

责任校对: 王秀媛

装帧设计: 刘竞华

文字翻译: 梁先桃

ISBN 978-7-5611-7358-9

定 价: 240.00 元

电 话: 0411-84708842

传 真: 0411-84701466

邮 购: 0411-84703636

E-mail: designbook@yahoo.cn

URL: <http://www.dutp.cn>

设计书店全国联销: www.designbook.cn

如有质量问题请联系出版中心: (0411) 84709043 84709246

The exclusive distributorship in Taiwan China is offered to ArchiHeart Corporation. Any infringement shall be subject to penalties.
中国台湾地区独家经销权委托给 ArchiHeart Corporation(心空间文化事业有限公司), 侵权必究。

PREFACE

前言



Kinney Chan

Chairman of
Hong Kong Interior
Design Association

The year of 2011 was the 20th anniversary of the HKIDA, and 2012 is the 20th edition of APIDA. I am happy to report that in recent years, APIDA become more and more international, and now includes entries from Asia and all across the world. It is now one of the most recognized international interior design awards, and one of the most reputable awards of its kind in the world.

On behalf of the HKIDA, I would like to extend my deepest thanks to all the jury members for all their dedication and efforts, and to all the sponsors for making it possible for us to realize the aims and mission of APIDA. Also I want to thank all the designers who entered their works to this competition and made it so fantastic.

2012 is the Hong Kong Design Year, and the Hong Kong government will support a series of mega events to showcase Hong Kong's strength as a regional design hub, foster the community's interest in design and celebrate design excellence. These events include international design forums, regional exchange symposia and exhibitions. The HKIDA will contribute to the Hong Kong Design Year by using APIDA as a platform to foster interior design excellence, promote international exchange and showcase the most outstanding interior designs in the Asia-Pacific region. I hope interior designers from Hong Kong China and the surrounding regions will continue to express their originality, creativity and passion for design through their works, and contribute to making Hong Kong China the design capital of Asia.



Po Po Leung

Chairlady of APIDA 2011

Last year HKIDA was celebrating its 20th anniversary, and this also happened to be APIDA's 19th edition. From 2010, APIDA underwent a re-branding and re-designing of its image, and you would have noticed changes in our promotion materials and award statues. We also made our promotion strategies more international, and have invited official media partners in different regions such as Mainland China, Taiwan China, Hong Kong China, Japan, and Malaysia to join us in publicizing the event and increase APIDA's presence in these places.

However, the one thing that remains unchanged is APIDA's mission of celebrating excellence in interior design and raising the professional standards and conduct of the industry in the Asia-Pacific region.

For the 19th APIDA, we are happy to receive nearly 600 entries from Hong Kong China, Mainland China, Macau China, Taiwan China, Singapore, Malaysia, Thailand, the Philippines, Indonesia, Korea, Japan, Australia and New

Zealand. Overall the standard of the entries is spectacular, which made the job of our jury members very difficult indeed. On behalf of the HKIDA, I offer my deepest gratitude to our jury members for their time, hard work, dedication and support. Without you this competition would not have been possible.

With its 19-year history, APIDA has become not only the most well-known interior design award in the region, but also the most widely respected and professional event of its kind. The award itself is a symbol of excellence coveted by interior designers from across Asia and beyond. I congratulate the design teams behind all of this year's entries, and thank you for using APIDA as a platform for sharing and exchanging ideas. I myself have learnt a great deal, from your works, and I hope in the future you will, continue to strive for excellence and keep on creating interior environments that benefit your clients, users and society as a whole. Thank you very much.



目录 Contents

SAMPLE SPACE

样板空间

- 8 Sukhothai Residences
- 14 Chongqing Forte The Cullinan Show Flat
- 20 浅唱
- 24 恋春——信业花园样板房
- 30 自然·沁心——珀丽湾别墅
- 34 贵熙帝景样板间
- 38 星星华园国际样板房
- 42 万科中山朗润园别墅样板房
- 46 北京丽莱花园别墅
- 50 西安阳光金城上户
- 54 “同德极少墅”别墅
- 58 南湾御园样板房
- 62 Xiang Shui Wan A2
- 66 A Chic Show Flat in Shenzhen
- 70 金茂置业 M350C 户型别墅样板房
- 74 万科棠樾悦然庄联排别墅
- 78 水公园

LEISURE & ENTERTAINMENT SPACE

休闲娱乐空间

84	Shanghai IFC Mall Palace Cinema	156	In Base 3 Club
90	Beijing Palace Cinema in China World Trade Centre	160	Terrace at Shantiniketan
96	水木原本会所	164	Club Cubic
100	La Vie Pub	168	如意会所
104	GH Citywalk Cinema	172	艾伦·悦 SPA 会所
108	Broadway The One Cinema	176	涟漪 Spa
112	广州风神高尔夫会所	180	一岩堂会所
116	GH Whampoa Cinema	184	东莞帝豪华园酒店梦剧院高街会所
120	瀛·SPA	188	上海新天地南里商场五层娱乐公共空间
124	Agogo Clubhouse	192	Miele
130	美丽一生 SPA 会所	196	大公园沙龙会所
134	MBox 影院	200	万科棠樾会所
138	西安阳光金城会所	204	KAMADE 量贩式 KTV
142	Palace ifc (Phase 1)	208	SRN 瑞士皇室抗衰老有限公司深圳接待会所
146	Derby Restaurant & Bar	212	水立方 SPA 馆
152	蓝天 SPA 健康会所		

COLLECTION OF THE 19TH ASIA-PACIFIC INTERIOR DESIGN AWARDS

第十九届亚太区室内设计大奖参赛作品选

SAMPLE SPACE + LEISURE & ENTER- TAINMENT SPACE

样板空间+休闲娱乐空间

翟东晓 / 深圳市创福美图文化发展有限公司 编著
大连理工大学出版社

METTO

图书在版编目 (CIP) 数据

第十九届亚太区室内设计大奖参赛作品选·样板空间
+ 休闲娱乐空间: 英汉对照 / 翟东晓, 深圳市创福美图
文化发展有限公司编著. —大连: 大连理工大学出版社,
2012.12

ISBN 978-7-5611-7358-9

I. ①第… II. ①翟… ②深… III. ①室内装饰设计—亚太地区—图集②住宅—室内装饰设计—亚太地区—图集③文娱活动—公共建筑—室内装饰设计—亚太地区—图集 IV. ① TU238-64 ② TU241-64 ③ TU242.4-64

中国版本图书馆 CIP 数据核字 (2012) 第 233826 号

出版发行: 大连理工大学出版社

(地址: 大连市软件园路 80 号 邮编: 116023)

印 刷: 利丰雅高印刷(深圳)有限公司

幅面尺寸: 242mm × 263mm

印 张: 18

插 页: 4

出版时间: 2012 年 12 月第 1 版

印刷时间: 2012 年 12 月第 1 次印刷

责任编辑: 裘美倩

责任校对: 王秀媛

装帧设计: 刘竞华

文字翻译: 梁先桃

ISBN 978-7-5611-7358-9

定 价: 240.00 元

电 话: 0411-84708842

传 真: 0411-84701466

邮 购: 0411-84703636

E-mail: designbook@yahoo.cn

URL: <http://www.dutp.cn>

设计书店全国联销: www.designbook.cn

如有质量问题请联系出版中心: (0411) 84709043 84709246

The exclusive distributorship in Taiwan China is offered to ArchiHeart Corporation. Any infringement shall be subject to penalties.
中国台湾地区独家经销权委托给 ArchiHeart Corporation(心空间文化事业有限公司), 侵权必究。

PREFACE

前言



Kinney Chan

Chairman of
Hong Kong Interior
Design Association

The year of 2011 was the 20th anniversary of the HKIDA, and 2012 is the 20th edition of APIDA. I am happy to report that in recent years, APIDA become more and more international, and now includes entries from Asia and all across the world. It is now one of the most recognized international interior design awards, and one of the most reputable awards of its kind in the world.

On behalf of the HKIDA, I would like to extend my deepest thanks to all the jury members for all their dedication and efforts, and to all the sponsors for making it possible for us to realize the aims and mission of APIDA. Also I want to thank all the designers who entered their works to this competition and made it so fantastic.

2012 is the Hong Kong Design Year, and the Hong Kong government will support a series of mega events to showcase Hong Kong's strength as a regional design hub, foster the community's interest in design and celebrate design excellence. These events include international design forums, regional exchange symposia and exhibitions. The HKIDA will contribute to the Hong Kong Design Year by using APIDA as a platform to foster interior design excellence, promote international exchange and showcase the most outstanding interior designs in the Asia-Pacific region. I hope interior designers from Hong Kong China and the surrounding regions will continue to express their originality, creativity and passion for design through their works, and contribute to making Hong Kong China the design capital of Asia.



Po Po Leung

Chairlady of APIDA 2011

Last year HKIDA was celebrating its 20th anniversary, and this also happened to be APIDA's 19th edition. From 2010, APIDA underwent a re-branding and re-designing of its image, and you would have noticed changes in our promotion materials and award statues. We also made our promotion strategies more international, and have invited official media partners in different regions such as Mainland China, Taiwan China, Hong Kong China, Japan, and Malaysia to join us in publicizing the event and increase APIDA's presence in these places.

However, the one thing that remains unchanged is APIDA's mission of celebrating excellence in interior design and raising the professional standards and conduct of the industry in the Asia-Pacific region.

For the 19th APIDA, we are happy to receive nearly 600 entries from Hong Kong China, Mainland China, Macau China, Taiwan China, Singapore, Malaysia, Thailand, the Philippines, Indonesia, Korea, Japan, Australia and New

Zealand. Overall the standard of the entries is spectacular, which made the job of our jury members very difficult indeed. On behalf of the HKIDA, I offer my deepest gratitude to our jury members for their time, hard work, dedication and support. Without you this competition would not have been possible.

With its 19-year history, APIDA has become not only the most well-known interior design award in the region, but also the most widely respected and professional event of its kind. The award itself is a symbol of excellence coveted by interior designers from across Asia and beyond. I congratulate the design teams behind all of this year's entries, and thank you for using APIDA as a platform for sharing and exchanging ideas. I myself have learnt a great deal, from your works, and I hope in the future you will, continue to strive for excellence and keep on creating interior environments that benefit your clients, users and society as a whole. Thank you very much.



目录 Contents

SAMPLE SPACE

样板空间

- 8 Sukhothai Residences
- 14 Chongqing Forte The Cullinan Show Flat
- 20 浅唱
- 24 恋春——信业花园样板房
- 30 自然·沁心——珀丽湾别墅
- 34 贵熙帝景样板间
- 38 星星华园国际样板房
- 42 万科中山朗润园别墅样板房
- 46 北京丽莱花园别墅
- 50 西安阳光金城上户
- 54 “同德极少墅”别墅
- 58 南湾御园样板房
- 62 Xiang Shui Wan A2
- 66 A Chic Show Flat in Shenzhen
- 70 金茂置业 M350C 户型别墅样板房
- 74 万科棠樾悦然庄联排别墅
- 78 水公园

LEISURE & ENTERTAINMENT SPACE

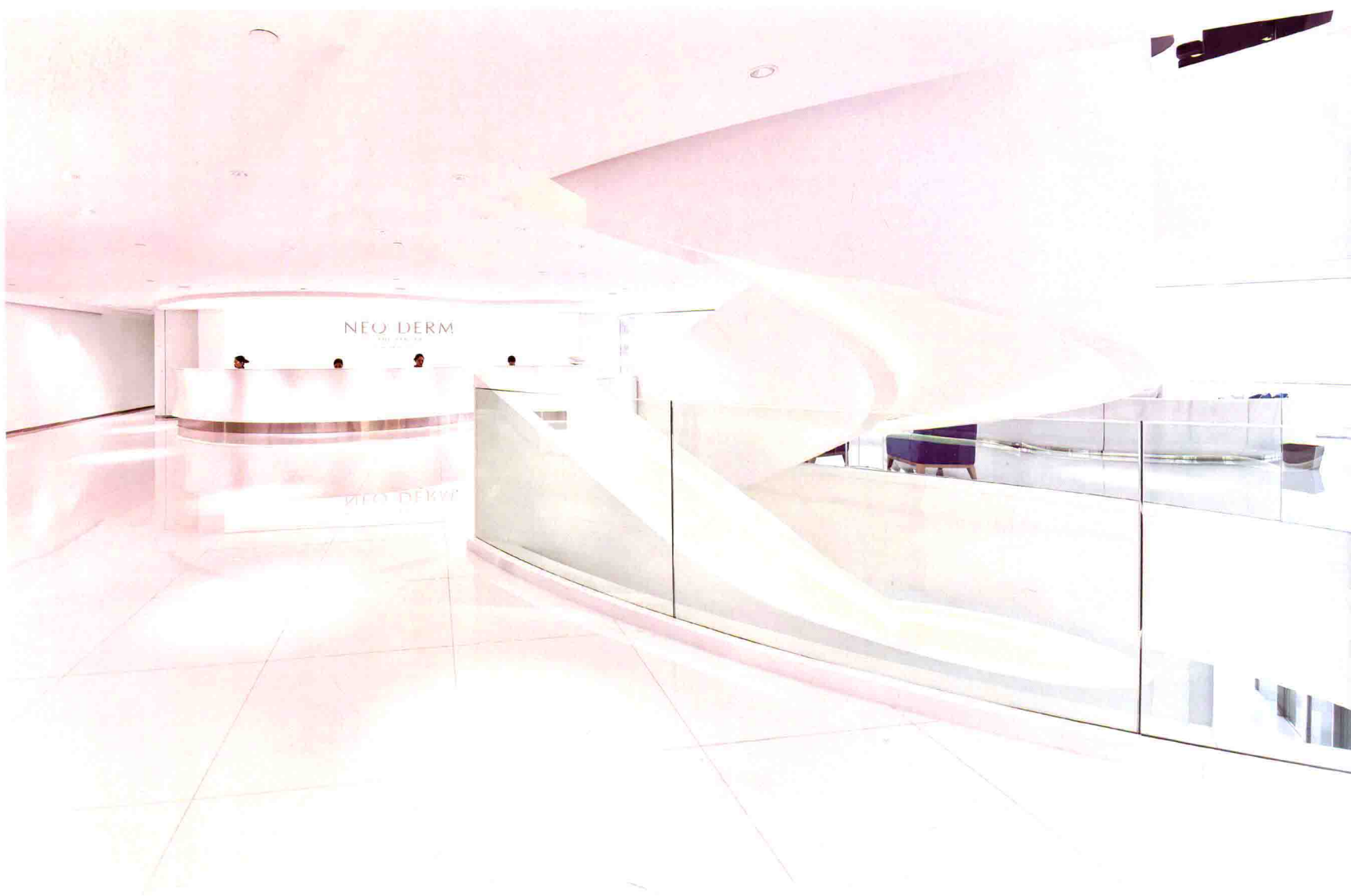
休闲娱乐空间

- | | | | |
|-----|--|-----|--------------------------|
| 84 | Shanghai IFC Mall Palace Cinema | 156 | In Base 3 Club |
| 90 | Beijing Palace Cinema
in China World Trade Centre | 160 | Terrace at Shantiniketan |
| 96 | 水木原本会所 | 164 | Club Cubic |
| 100 | La Vie Pub | 168 | 如意会所 |
| 104 | GH Citywalk Cinema | 172 | 艾伦·悦 SPA 会所 |
| 108 | Broadway The One Cinema | 176 | 涟漪 Spa |
| 112 | 广州风神高尔夫会所 | 180 | 一岩堂会所 |
| 116 | GH Whampoa Cinema | 184 | 东莞帝豪华园酒店梦剧院高街会所 |
| 120 | 瀛·SPA | 188 | 上海新天地南里商场五层娱乐公共空间 |
| 124 | Agogo Clubhouse | 192 | Miele |
| 130 | 美丽一生 SPA 会所 | 196 | 大公园沙龙会所 |
| 134 | MBox 影院 | 200 | 万科棠樾会所 |
| 138 | 西安阳光金城会所 | 204 | KAMADE 量贩式 KTV |
| 142 | Palace ifc (Phase 1) | 208 | SRN 瑞士皇室抗衰老有限公司深圳接待会所 |
| 146 | Derby Restaurant & Bar | 212 | 水立方 SPA 馆 |
| 152 | 蓝天 SPA 健康会所 | | |



SAMPLE SPACE

样板空间

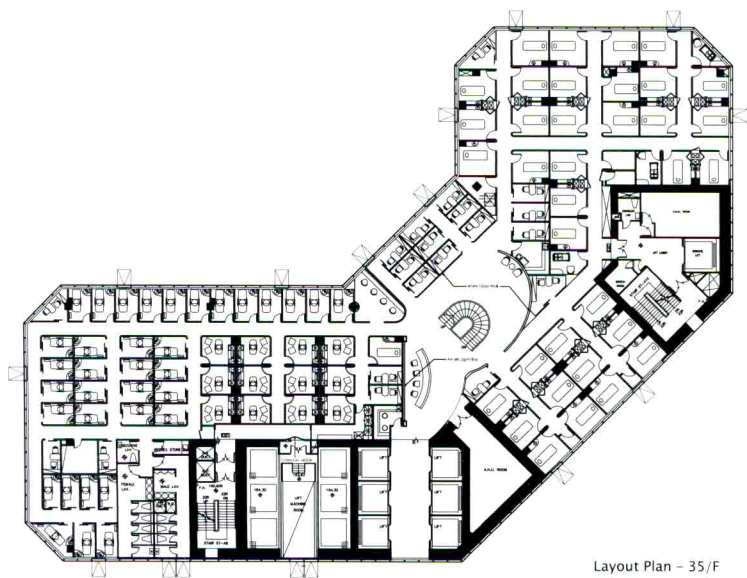


Bangkok, Thailand / 180m²

Sukhothai Residences

Occupying the 3-storey unit in Times Square, the project puts a curved, pure white staircase to connect different floors. Special lighting effects are designed along and under the steps, which become the most focal element in the center. In the

lobby, curved and waved patterns create layers on the white walls. Shiny and bright flooring visually heightens the low ceiling level, making the area more spacious and comfortable.

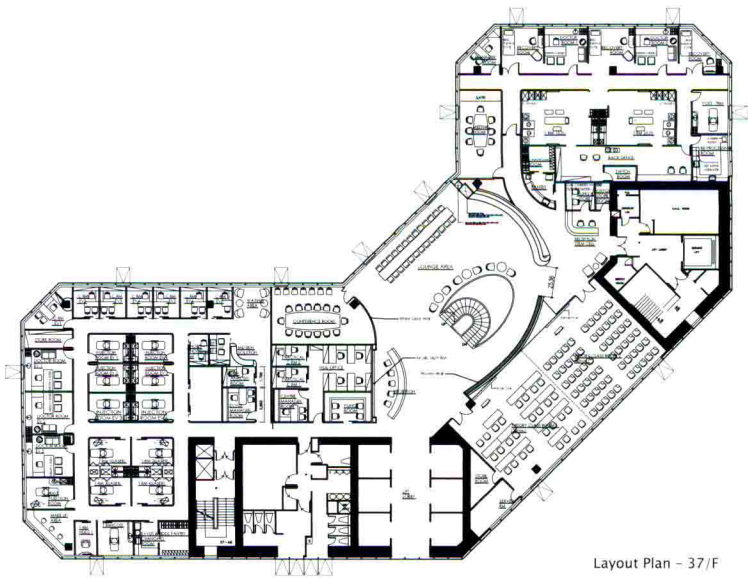
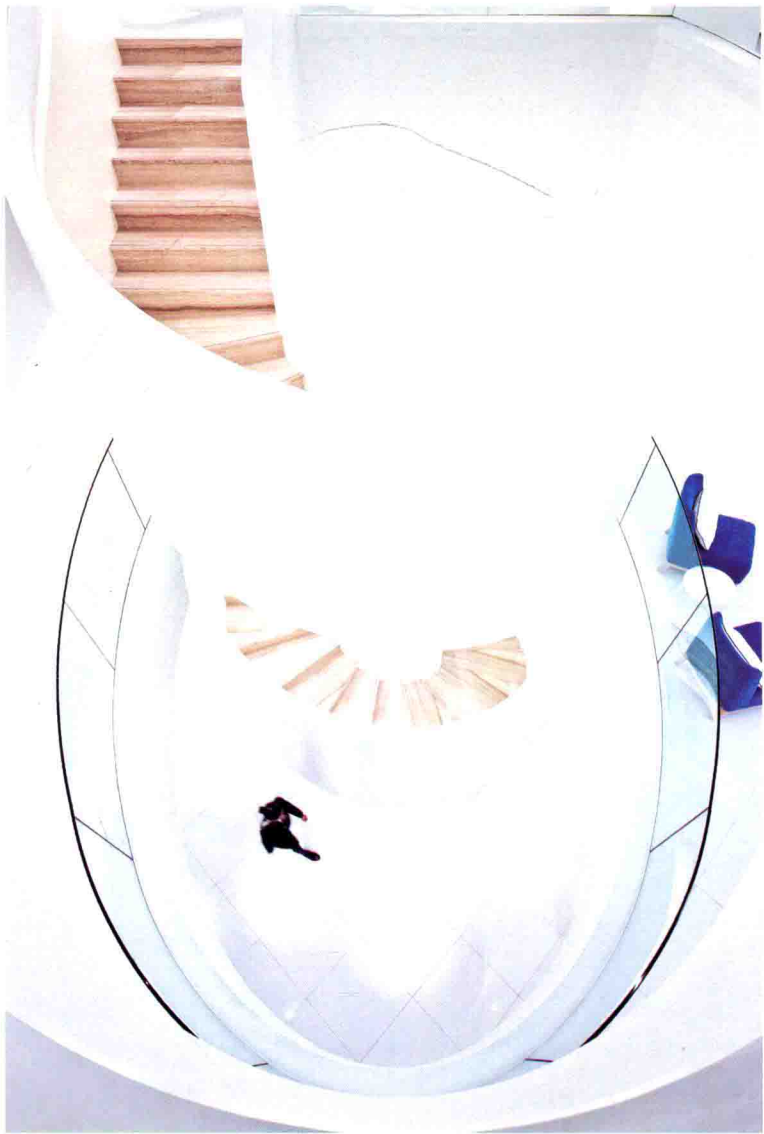


Layout Plan - 35/F



Layout Plan - 36/F





本案占据时代广场中一处三层的单元，使用弧形的纯白色楼梯连接不同的楼层。楼梯和楼梯下面设计有特别的灯光效果，成为设计的焦点元素。大堂白色墙壁上用弧形和波浪形的图案制造出层次。闪光的地板材料从视觉上抬升了低矮的天花，让空间显得更加宽敞、舒适。