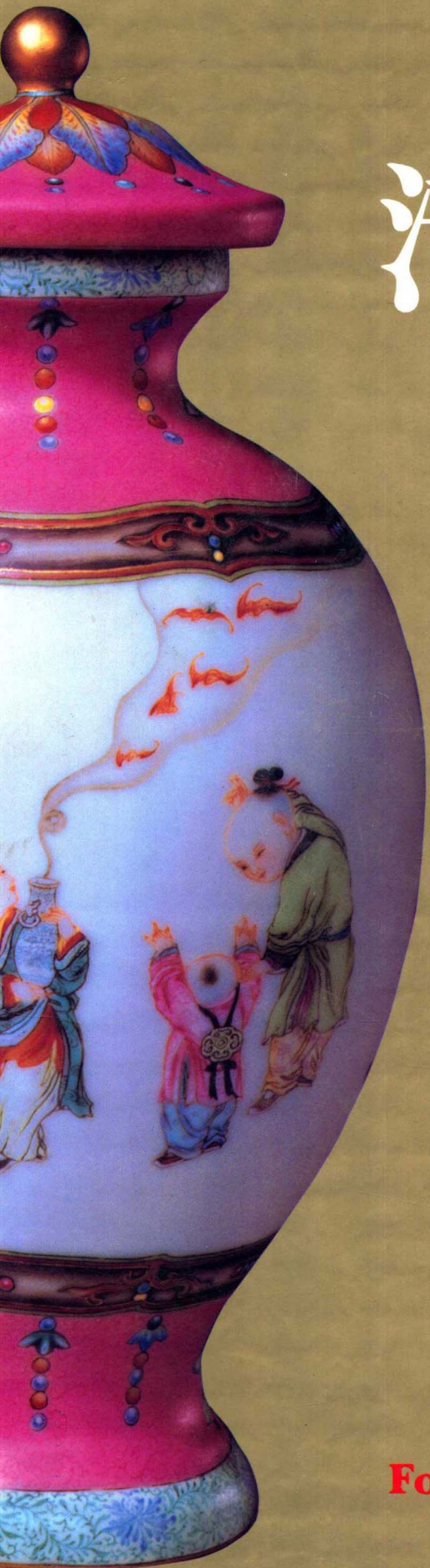


故宮博物院藏

清盛世瓷 選粹

Selected Porcelain
of the
Flourishing
Qing Dynasty
at the
Palace Museum

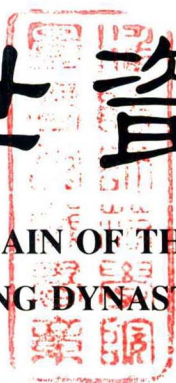


紫禁城出版社

Forbidden City Publishing House

清盛世瓷選粹

SELECTED PORCELAIN OF THE FLOURISHING
QING DYNASTY



淮阴师院图书馆1285870



紫禁城出版社

FORBIDDEN CITY PUBLISHING HOUSE

故宮博物院藏清盛世瓷選粹

主 編：馮先銘 耿寶昌

副 主 編：葉佩蘭

攝 影：胡 錘 馬曉旋

英文翻譯：顧 磊 唐際根 何 濤

責任編輯/裝幀設計：蔡治淮

出 版：紫禁城出版社
(北京故宮博物院內)

承 印：香港文化教育出版社有限公司
(香港北角蜆殼街9-23號秀明中心24樓B座)

版 次：一九九四年十二月第一版第一次印刷

版權所有 翻印必究

SELECTED PORCELAIN OF THE FLOURISHING QING DYNASTY AT THE PALACE MUSEUM

MANAGING EDITOR: Feng Xianming, Geng Baochang

VICE-MANAGING EDITOR: Ye Peilan

PHOTOGRAPHY: Hu Chui, Liu Zhigang, Zhao Shan, Ma Xiaoxuan

ENGLISH TRANSLATION: Gu Lei, Tang Jigen, He Tao

EXECUTIVE EDITOR/DESIGNER: Cai Zhihui

PUBLISHING DIRECTOR: Ma Zhefei

PUBLISHING BY: Forbidden City Publishing House, Palace Museum

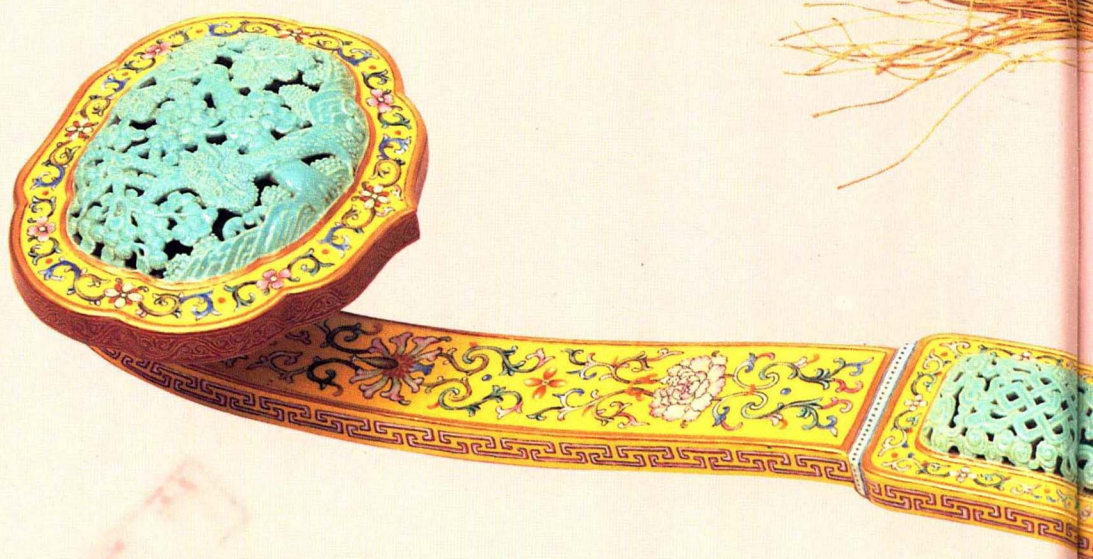
PRINTING BY: Education and Cultural Press Ltd. Hong Kong

Copyright © 1994 by the Forbidden City Publishing House

ALL RIGHTS RESERVED.

ISBN 7-80047-187-X/J · 84

050000



紫禁城出版社

Forbidden City Publishing House

清盛世瓷選粹

SELECTED PORCELAIN
OF THE FLOURISHING
QING DYNASTY

Managing Editor : Feng Xianming, Geng Baochang

Vice-Managing Editor : Ye Peilan

主編 馮先銘 耿寶昌

副主編 葉佩蘭



故宮博物院副院長

楊 新

YANG XIN

DEPUTY DIRECTOR,

THE PALACE MUSEUM IN PEKING

is a magnificent part of the history of art. Needless to say, it is one of the greatest contribution to the world civilization made by Chinese. The porcelain techniques are now well known around the world, however, ancient Chinese porcelain is getting more precious and perhaps the most lasting of all the arts. A marvellous piece at the famous Sopbhi Auction is worth as high as hundreds of thousands or even millions. They are more treasured by connoisseurs and collectors.

The steable political situation, prosperous culture and economy of the reigns of Kangxi, Yongzheng and Qianlong of the Qing dynasty made the porcelain industry – combine with technics and artistry – be at its peak. Having carried on the achivement of the previous time, the porcelain industry was well developed at that period. The production scale was expanded and the technique was considerable advanced. The level of porcelain wares made by the eminent Chinese potters are not only the refined body, the smooth, bright and colourful glaze, the stylistic variety, but the exquisite decoration and excellent imitation. It was the Qing dynasty that since then the westerners had been realizing that Chinese porcelain, especially those of the court kilns at Jingdezhen, were worthy of treasuring and collecting rather than oridinary commodities.

The Palace Museum in Peking enjoys a large quantities of ancient Chinese porcelain, especially of the Qing porcelain from the court kilns at Jingdezhen of Jiangxi Province numbering in hundreds of thousands. The elegient book is edited in terms of meeting the demand of the enthusiasts and collectors by the famous ceramic experts, Mr. Feng Xian – ming, Mr. Geng Bao – chang, Ms. Ye Pei – lan and other curators at the Ceramic Department of the Palace Museum who carefully selected 300 master pieces from the massive porcelain of the Kangxi, Yongzheng and Qianlong' s period.

During the approach to the subject and the preparation of the book, Mr. Feng Xian – ming threw a lot of his energy into the work. He was going to write a preface for the book. Unfortunately, he passed away before he could finish it. Mr. Feng Xian – ming was the member of the State Committee of Cultural Relics, the member of the State Determination Committee of Cultural Relics, president of the Association of Ancient Chinese Ceramics, research fellow at the Palace Museum in Peking. Being diligent and rigorous in his studies, he left us many scientific books. He made a great contribution to the cause of Chinese museology and cultural relics especially of the ceramics study. Being invited frequently to give lectures in Japan, the United Kingdom, Tailand, the Philippines, Hong Kong and Taiwan, Mr. Feng Xian – ming was highly appraised at home and abroad. His leave to us is a great loss to the compilation of the book, to the Pelace Museum in Peking and to the academic circles at large. As an amateur of Chinese ceramics, I write the few words to cherish the memory of Mr. Feng Xian – ming.

目 錄

圖版目錄	6
前 言	18
康熙瓷器	
概 述	22
圖 版	43
雍正瓷器	
概 述	138
圖 版	157
乾隆瓷器	
概 述	254
圖 版	269

CONTENTS

CONTENTS OF PLATES.....	10
FOREWORD	18
THE PORCELAIN WARES IN THE PERIOD OF THE EMPEROR KANGXI	
Introduction.....	31
Plates	43
THE PORCELAIN WARES IN THE PERIOD OF THE EMPEROR YONGZHENG	
Introduction.....	146
Plates	157
THE PORCELAIN WARES IN THE PERIOD OF THE EMPEROR QIANLONG	
Introduction.....	260
Plates	269

圖版目錄

康熙

1. 康熙青花雉雞牡丹紋鳳尾尊	43	36. 康熙五彩水滸人物紋盤	75
2. 康熙青花山水人物紋棒槌瓶	44	37. 康熙五彩周處斬蛟紋大盤	76
3. 康熙青花松鼠葡萄紋棒槌瓶	45	38. 康熙倣成化款五彩人物紋大盤	77
4. 康熙青花海水雲龍紋瓶	46	39. 康熙款五彩加金“萬壽”折枝桃紋盤	78
5. 康熙青花地白牡丹蟠螭紋花瓶	47	40. 康熙五彩加金海水龍紋大盤	79
6. 康熙青花松竹梅紋茶壺	48	41. 康熙款東青地五彩描金花鳥紋花盆	80
7. 康熙青花山水人物紋蓋罐	48	42. 康熙豆青地五彩酸漿果紋蓋盅	81
8. 康熙青花纏絡紋賁巴壺	49	43. 康熙五彩竹雀詩句紋茶壺	82
9. 康熙款青花纏枝蓮紋墩式盅	50	44. 康熙五彩竹紋詩句筆筒	83
10. 康熙青花“安素草堂”款“空城計”紋大盤	51	45. 康熙紅綠彩加金獸面紋撇口尊	84
11. 康熙青花“玉”字款勾蓮人物紋菊瓣折沿洗	52	46. 康熙紅綠彩描金雲龍紋直頸瓶	85
12. 康熙青花瓜棱掛壁水注	53	47. 康熙紅綠彩描金獸面紋鏤空方薰	86
13. 康熙青花釉裏紅網紋桃紐茶壺	54	48. 康熙紅綠彩描金開光山水人物紋瓶	87
14. 康熙豆青地釉裏三色梅花紋筆筒	55	49. 康熙紅彩描金龍鳳紋盤	88
15. 康熙款豆青地青花海水紅日紋盅	56	50. 康熙款綠彩雲龍暗海水紋盅	89
16. 康熙釉裏紅桃竹紋梅瓶	57	51. 康熙款青花海水紅龍紋盅	89
17. 康熙款釉裏紅菊花紋水丞	58	52. 康熙青花紅彩描金花卉紋蓋罐	90
18. 康熙款釉裏紅加彩月季花紋馬蹄尊	58	53. 康熙款金地藍團壽字紋盤	91
19. 康熙青花釉裏紅加彩海水龍紋缸	59	54. 康熙款金地藍團壽字紋盃	92
20. 康熙五彩人物紋棒槌瓶	60	55. 康熙灑藍地描金花鳥紋棒槌瓶	93
21. 康熙五彩蘭亭會紋棒槌瓶	61	56. 康熙灑藍地描金紅魚紋棒槌瓶	94
22. 康熙五彩人物紋棒槌瓶	62	57. 康熙灑藍地臨“懷素帖”紋筆筒	95
23. 康熙五彩“福”、“壽”字開光人物紋棒槌瓶	63	58. 康熙礬紅彩地描金花籃紋棒槌瓶	96
24. 康熙五彩花鳥紋棒槌瓶	64	59. 康熙款紫地琺瑯彩纏枝蓮紋瓶	97
25. 康熙五彩加金凸博古紋棒槌瓶	65	60. 康熙款黃地琺瑯彩牡丹紋盅	98
26. 康熙五彩加金折枝花果紋梅瓶	66	61. 康熙款藍地琺瑯彩牡丹紋盅	98
27. 康熙五彩加金鸞鷟荷花紋鳳尾尊	67	62. 康熙款紅地琺瑯彩開光豆綠地牡丹紋盃	99
28. 康熙五彩加金三獅紋直頸瓶	68	63. 康熙款粉彩鍾馗醉像	100
29. 康熙五彩加金纏枝蓮紋葫蘆瓶	69	64. 康熙款粉彩折枝花紋水丞	101
30. 康熙五彩加金錦地開光花卉紋枕	70	65. 康熙款鬥彩八寶綠雲龍紋蓋罐	102
31. 康熙五彩加金開光山水花鳥紋缸	70	66. 康熙款鬥彩人物紋菱花式花盆	103
32. 康熙五彩加金花蝶紋攢盤	71	67. 康熙倣成化款鬥彩夔龍紋盅	104
33. 康熙倣成化款青花五彩雉雞牡丹紋蓋盅	72	68. 康熙款鬥彩團夔龍紋盃	105
34. 康熙款五彩仕女紋折沿盆	73	69. 康熙鬥彩人物紋盅	106
35. 康熙五彩人物紋盅	74	70. 康熙素三彩折枝花卉紋盤	108
		71. 康熙三彩鏤空錦地梅花紋六方香薰	109
		72. 康熙黃地三彩丹鳳長圓盒	110
		73. 康熙黃地三彩花卉紋攢盤	111
		74. 康熙款黃地三彩紫綠龍紋折沿大盤	112
		75. 康熙款黃地紅龍紋盅	113

76. 康熙款黃地紫雲龍紋盃	114
77. 康熙款綠地紫雲紋盃	114
78. 康熙款三彩虎皮釉盃	115
79. 康熙郎窯紅釉觀音尊	116
80. 康熙郎窯紅釉直口瓶	117
81. 康熙郎窯紅釉琵琶尊	118
82. 康熙款豇豆紅釉萊菔瓶	119
83. 康熙款豇豆紅釉柳葉瓶	120
84. 康熙款豇豆紅釉印盒	121
85. 康熙霽紅釉梅瓶	122
86. 康熙做宣德款霽紅釉僧帽壺	123
87. 康熙款霽紅釉盃	124
88. 康熙款東青釉凸海水龍紋萊菔瓶	125
89. 康熙天藍釉暗螭紋螭耳尊	126
90. 康熙款天藍釉洗	127
91. 康熙款天藍釉暗月牙耳梅瓶	128
92. 康熙孔雀綠釉暗螭紋花瓶	129
93. 康熙做宣德款孔雀綠釉凸雲龍紋蓋罐	130
94. 康熙孔雀綠釉暗蕉葉紋花瓶	131
95. 康熙孔雀綠釉獅子	132
96. 康熙款茄皮紫釉雙螭耳瓶	133
97. 康熙淡綠釉暗花螭紋盃	134
98. 康熙款黃釉暗螭紋雙龍耳盃	134
99. 康熙黃釉暗夔紋鳳流龍柄壺	135
100. 康熙白釉暗回紋把盃	136

雍正

1. 雍正青花三友紋梅瓶	157
2. 雍正款青花桃蝠橄欖瓶	158
3. 雍正款青花花鳥紋雙耳扁瓶	159
4. 雍正款青花纏枝蓮螭耳兩截瓶	160
5. 雍正款青花菊瓣紋帶柄花澆	161
6. 雍正青花花鳥紋大盤	162
7. 雍正青花白雲龍紋雙耳瓶	163
8. 雍正做宣德款青花釉裏紅鳳穿花蓋罐	164
9. 雍正款青花釉裏紅松竹梅紋瓶	165
10. 雍正款青花釉裏紅三果紋雙耳扁瓶	166
11. 雍正款青花胭脂紅纏枝蓮紋鹿頭尊	167
12. 雍正青花釉裏紅“蘭亭會”紋筆筒	168
13. 雍正款釉裏紅海水白龍紋梅瓶	169
14. 雍正款天藍地釉裏紅葡萄紋十方盃	170

15. 雍正款門彩纏枝花紋梅瓶	171
16. 雍正款門彩折枝花卉紋如意耳蒜頭瓶	172
17. 雍正做成化款門彩勾蓮紋菊瓣形大尊	173
18. 雍正款門彩團菊蝶紋蓋罐	174
19. 雍正門彩花卉草蟲紋天鷄蓋盃	175
20. 雍正款門彩團菊蝶紋盃	176
21. 雍正款門彩蓮池鴛鴦紋臥足盤	177
22. 雍正款門彩海水異獸紋盤	178
23. 雍正款粉彩花蝶直口瓶	179
24. 雍正款粉彩牡丹紋直口瓶	180
25. 雍正款珊瑚紅地粉彩牡丹紋貫耳瓶	181
26. 雍正款粉彩人物紋梅瓶	182
27. 雍正款粉彩六桃紋天球瓶	183
28. 雍正款粉彩九鶴紋天球瓶	184
29. 雍正款粉彩鏤空蓋盒	185
30. 雍正粉彩花蝶紋折腰盃	186
31. 雍正款粉彩團蝶紋盃	186
32. 雍正款粉彩紅蝠經帶紋盃	187
33. 雍正款粉彩過枝花卉紋大盤	188
34. 雍正款五彩仕女紋罐	189
35. 雍正款五彩福祿盃	190
36. 雍正做成化款五彩人物紋盤	191
37. 雍正做成化款五彩人物紋盤	192
38. 雍正款琺瑯彩三友橄欖瓶	193
39. 雍正款黃地琺瑯彩梅花詩句紋盃	194
40. 雍正款黃地琺瑯彩蘭石紋盃	194
41. 雍正款琺瑯彩藍色山水紋盃	195
42. 雍正款琺瑯彩黃雲龍紋盃	196
43. 雍正款黃地綠彩橄欖瓶	197
44. 雍正款黃地綠海水白鶴紋盃	198
45. 雍正款黃地粉彩雲蝠紋盃	198
46. 雍正木紋釉墨彩山水紋筆筒	199
47. 雍正款紅彩夔龍紋蒜頭瓶	200
48. 雍正款紅地白花蝶紋蓋盒	201
49. 雍正款米色釉白魚紋盤	202
50. 雍正款霽紅釉白魚紋盤	203
51. 雍正款黑地描金雲龍紋高足盃	204
52. 雍正做官釉匜式尊	205
53. 雍正做官釉貫耳方瓶	206
54. 雍正做官釉桃式洗	207
55. 雍正款做官釉茶壺	208

56. 雍正款做官釉盃	209
57. 雍正款做哥釉渣斗	210
58. 雍正款做哥釉三羊瓶	211
59. 雍正款做哥釉古銅紋方尊	212
60. 雍正款做哥釉獸耳扁瓶	213
61. 雍正做汝釉雙耳扁瓶	214
62. 雍正款天藍釉雙耳出戟瓶	215
63. 雍正款天藍釉雙龍耳瓶	216
64. 雍正款紫釉座天藍釉鉢缸	217
65. 雍正款粉青釉凸夔鳳紋蓮瓣口直頸瓶	218
66. 雍正款粉青釉印花紋花瓣式尊	219
67. 雍正款粉青釉鸚鵡耳扁瓶	220
68. 雍正款粉青釉僧帽壺	221
69. 雍正款粉青釉荸薺式三繫瓶	222
70. 雍正款粉青釉弦紋菊瓣瓶	223
71. 雍正款東青釉穿帶耳小蓋罐	224
72. 雍正款東青釉凸花鳴耳尊	225
73. 雍正款窑變釉貫耳瓶	226
74. 雍正款窑變釉弦紋瓶	227
75. 雍正款窑變釉蟠螭尊	228
76. 雍正款天藍釉做鈎釉橫間太白罈	229
77. 雍正款天藍釉做鈎釉菊瓣壺	230
78. 雍正款霽紅釉玉壺春瓶	231
79. 雍正款霽藍釉渣斗	232
80. 雍正款青金藍釉鉢缸	233
81. 雍正款爐均釉獸耳啣環尊	234
82. 雍正孔雀綠釉凸夔龍穿靈芝洗口尊	235
83. 雍正孔雀綠釉菊瓣尊	236
84. 雍正款綠釉印花纏枝蓮紋如意耳瓶	237
85. 雍正款珊瑚紅釉小盃	238
86. 雍正珊瑚紅釉雙耳爐	238
87. 雍正款胭脂彩釉小盃	239
88. 雍正款淡粉紅釉蒜頭瓶	240
89. 雍正款淡黃釉小瓶	241
90. 雍正款淡黃釉小盃	242
91. 雍正款茶葉末釉犧耳尊	243
92. 雍正款鐵銹花釉雙耳尊	244
93. 雍正款廠官釉花澆	245
94. 雍正款蟹甲青釉瓜棱罐	246
95. 雍正龍泉釉荷葉式洗	247
96. 雍正款白釉雙魚形瓶	248

97. 雍正款白釉凸夔龍紋蓋罐	249
98. 雍正款白釉凸花紋蓋罐	250
99. 雍正款顏色釉菊瓣盤	251
100. 雍正款做木紋釉盆	252

乾隆

1. 乾隆款青花荷花紋貫耳大瓶	269
2. 乾隆青花壽山福海紋花口瓶	270
3. 乾隆款青花八寶紋雙螭耳瓶	271
4. 乾隆款青花八寶勾蓮紋賁巴壺	272
5. 乾隆款青花描金蝴蝶紋三犧尊	273
6. 乾隆款青花紅彩勾蓮紋雙耳瓶	274
7. 乾隆款青花胭脂彩雲龍紋雙耳扁瓶	275
8. 乾隆款黃地紅彩海水龍紋盃	276
9. 乾隆款白地紅彩雲龍紋盃碟	276
10. 乾隆款粉彩花卉紅蝠“卍”字紋蓋盒	277
11. 乾隆款粉彩雀梅紋地球瓶	278
12. 乾隆款粉彩百鹿紋雙耳尊	279
13. 乾隆款粉彩嬰戲紋燈籠瓶	280
14. 乾隆款粉彩九老圖紋瓶	281
15. 乾隆款粉彩山水紋燈籠尊	282
16. 乾隆款粉彩八仙慶壽紋燈籠瓶	283
17. 乾隆款粉青地開光粉彩山水人物三孔扁瓶	284
18. 乾隆款粉彩折枝花卉紋雙螭耳瓶	286
19. 乾隆款粉彩百鹿紋雙耳尊	287
20. 乾隆款粉彩折枝三果紋燈籠尊	288
21. 乾隆款粉彩開光蓮花詩句紋瓶	289
22. 乾隆款粉彩開光山水鏤空蓋瓶	290
23. 乾隆款綠地粉彩勾蓮紋包袱尊	292
24. 乾隆款松石綠地粉彩葫蘆三聯瓶	293
25. 乾隆款紫地軋道粉彩勾蓮紋梅瓶	294
26. 乾隆款紫地軋道粉彩朵蓮紋水丞	295
27. 乾隆款藍地粉彩雲鳳紋象耳瓶	296
28. 乾隆款醬地描金粉彩凸雕靈桃瓶	297
29. 乾隆款粉彩塑嬰瓶	298
30. 乾隆款紅綠彩蝠紋葫蘆瓶	299
31. 乾隆款粉彩花蝶紋盃	300
32. 乾隆款粉地粉彩開光菊花紋茶壺	300
33. 乾隆款粉彩八仙紋盤	301
34. 乾隆木紋地粉彩松鶴紋筆筒	302
35. 乾隆款淡黃地軋道粉彩花卉紋攢盤	303

36. 乾隆款豆青地琺瑯彩開光山水詩句紋瓶	304	76. 乾隆款粉彩塑夔鳳式冠架	340
37. 乾隆款琺瑯彩花卉紋蒜頭瓶	305	77. 乾隆款松石綠釉鏤空花籃	341
38. 乾隆款紫地軋道琺瑯彩嬰戲紋雙聯蓋瓶	306	78. 乾隆款外哥釉鏤空內粉彩花卉紫軋地轉心瓶	342
39. 乾隆款藍紫雙色地軋道琺瑯彩花卉紋雙聯蓋瓶	307	79. 乾隆款外粉彩鏤空夔鳳耳內紅彩蝠紋轉心瓶	343
40. 乾隆款黃地琺瑯彩開光嬰戲紋瓶	308	80. 乾隆外粉彩鏤空葫蘆式內青花轉心瓶	344
41. 乾隆款藍錦地琺瑯彩折枝花卉紋燈籠尊	309	81. 乾隆款外黃地琺瑯彩開光象耳內粉彩嬰戲紋轉心瓶	345
42. 乾隆款琺瑯彩錦地描金纏枝花紋蒜頭瓶	310	82. 乾隆款外黃地青花纏枝蓮紋內青花交泰轉心瓶	346
43. 乾隆款黃地琺瑯彩仕女雙耳葫蘆小瓶	311	83. 乾隆款粉青釉暗花夔紋交泰尊	347
44. 乾隆款琺瑯彩胭脂色山水詩句紋小瓶	312	84. 乾隆款外藍地粉彩蓮花紋鏤空內青花套瓶	348
45. 乾隆款琺瑯彩開光人物紋雙耳小瓶	312	85. 乾隆款黃地綠彩雲龍紋貫耳穿帶瓶	349
46. 乾隆款琺瑯彩花卉紋小瓶	313	86. 乾隆款黃地釉裏紅蕉葉玉壺春瓶	350
47. 乾隆款黃地琺瑯彩團花壽字盤	313	87. 乾隆黃地墨彩折枝花紋花籃	351
48. 乾隆款紫地軋道琺瑯彩爵盤	314	88. 乾隆倣官釉水仙盆	352
49. 乾隆款胭脂色琺瑯彩茶壺	315	89. 乾隆倣哥釉桃式洗	352
50. 乾隆款琺瑯彩人物長方盒	316	90. 乾隆款窑變釉菊瓣雙耳尊	353
51. 乾隆款鬥彩開光粉彩花卉詩句紋瓶	317	91. 乾隆孔雀綠釉饕餮紋象耳尊	354
52. 乾隆款鬥彩嬰戲紋玉壺春瓶	318	92. 乾隆款松石綠釉凸雲龍紋燈籠尊	355
53. 乾隆款鬥彩勾蓮紋雙耳瓶	319	93. 乾隆爐均釉花囊	356
54. 乾隆款鬥彩蝠蓮紋螭耳蓋尊	320	94. 乾隆茄皮紫釉撇口瓶	357
55. 乾隆款鬥彩纏枝蓮紋雙耳盒瓶	321	95. 乾隆款鱗魚黃釉花澆	358
56. 乾隆鬥彩子母雞紋筆筒	322	96. 乾隆束青釉龍紋花口花瓶	359
57. 乾隆鬥彩荷蓮紋鼓釘綉墩	323	97. 乾隆款粉青釉刻八寶夔鳳紋獸耳啣環尊	360
58. 乾隆款窑變釉描金詩句花卉紋膽式瓶	324	98. 乾隆倣定夔紋雙耳活環四足爐	361
59. 乾隆款綠地金彩凸夔紋雙耳瓶	325	99. 乾隆款白釉花卉紋玲瓏盤	362
60. 乾隆款粉青地描金蓮蓬式花插	326	100. 乾隆款粉彩各色釉大瓶	363
61. 乾隆款鱗魚黃地描金葫蘆靈芝壁瓶	327		
62. 乾隆款茶葉末地描金花卉葫蘆式燭臺	328		
63. 乾隆廣彩朶花紋大盅	329		
64. 乾隆款粉彩凸雕殘荷式洗	330		
65. 乾隆粉彩盜鴨	331		
66. 乾隆款粉彩塑果品蟹盤	332		
67. 乾隆款倣古銅鑲金雙耳三足爐	333		
68. 乾隆款倣古銅彩出戟花觚	334		
69. 乾隆款倣朱漆菊瓣式蓋盤	335		
70. 乾隆款粉彩鏤空亭式香薰	336		
71. 乾隆款黃地粉彩松樹紋如意	337		
72. 乾隆金地紅彩勾蓮紋如意	337		
73. 乾隆款粉彩錦紋書式金鐘籠	338		
74. 乾隆款倣石釉開光粉彩人物蓋盒	338		
75. 乾隆鏤空粉彩開光花卉燈罩	339		

CONTENTS OF PLATES

KANGXI

1. Phoenix – tail – shaped zun vase with design of pheasant and peonies in underglaze blue	43
2. Mallet vase with design of landscape and figures in underglaze blue	44
3. Mallet vase with design of squirrels and grapes in underglaze blue	45
4. Vase with design of dragon amongst waves in underglaze blue	46
5. Gu vase (beaker) with design of panchi dragons and peonies reserved in white on an underglaze blue ground	47
6. Teapot with design of pine – bamboo – plum in underglaze blue	48
7. Covered jar with design of landscape and figures in underglaze blue	48
8. Tibetan flask with design of jewelery in underglaze blue	49
9. Bowl in the form of stool with design of lotus scrolls in underglaze blue, Kangxi mark	50
10. Large plate with design of scene in underglaze blue from the ‘Romance of the Three Kingdoms’, Ansucaotang mark	51
11. Washer with flattened rim in the shape of chrysanthemum petals and design of figures and outlined lotus in underglaze blue, mark of character ‘Yu’	52
12. Wall cistern in shape of melon in underglaze blue	53
13. Teapot with reticulated design and peach – shaped knob in underglaze red – and – blue	54
14. Brushpot with plum blossom design and tricolour underglaze with pea green ground, Kangxi mark	55
15. Bowl with design of sun rising from the waves in underglaze blue – and – red on a pea green ground, Kangxi mark	56
16. Meiping vase with design of peach and bamboo in underglaze red	57
17. Waterpot with design of chrysanthemum in underglaze red, Kangxi mark	58
18. Horse – hoof – shaped zun vase with design of monthly rose in colour enamels and underglaze red, Kangxi mark	58
19. Fish – bowl with design of dragon amongst waves in colour enamels and underglaze red	59
20. Mallet vase with design of figures in wucai enamels	60
21. Mallet vase with design of the ‘orchid pavilion meeting’ in wucai enamels	61
22. Mallet vase with design of figures in wucai enamels	62
23. Mallet vase with design of figures in panels and the characters ‘fu’ (fortune) and ‘shou’ (longevity) in wucai enamels	63
24. Mallet vase with design of flowers and birds in wucai enamels	64
25. Mallet vase with gilt relief design of archaic patterns in wucai enamels	65
26. Meiping vase with gilt design of flowers and fruits in wucai enamels	66
27. Phoenix – tail – shaped zun vase with gilt design of lotus and heron in wucai enamels	67
28. Vase with straight neck and gilt design of three lions in wucai enamels	68
29. Gourd – shaped vase with gilt design of lotus scrolls in wucai enamels	69
30. Pillow with gilt design of flowers in panels on a brocade ground in wucai enamels	70
31. Wide mouth jar with gilt design of landscape, flowers and birds in panels in wucai enamels	70
32. Plate set with gilt design of flowers and butterflies in wucai enamels	71
33. Covered bowl with design of pheasant and peonies in wucai enamels and underglaze blue, imitated Chenghua mark	72
34. Basin with flattened rim and design of female figure in wucai enamels, Kangxi mark	73
35. Bowl with design of figures in wucai enamels	74

36. Plate with design of figures from the novel 'Story of the Water Margin' in wucai enamels	75
37. Large plate with design of 'Zhou Chu killing the dragon' in wucai enamels	76
38. Large plate with design of figures in wucai enamels, imitated Chenghua mark	77
39. Plate with gilt characters 'wanshou' and design of peach sprays in wucai enamels, Kangxi mark	78
40. Large plate with gilt design of dragon amongst waves in wucai enamels	79
41. Flower - pot with gilt design of flowers and birds in wucai enamels on an eastern blue celadon ground, Kangxi mark	80
42. Covered bowl with design of berries in wucai enamels on a pea green celadon ground	81
43. Teapot with design of bamboos, birds and poem inscriptions in wucai enamels	82
44. Brushpot with design of bamboos and poem inscriptions in wucai enamels	83
45. Zun vase with flaring mouth and gilt design of animal masks in red and green enamels	84
46. Vase with straight neck and gilt design of dragons amongst clouds in red and green enamels	85
47. Square censer in openwork with gilt design of animal masks in red and green enamels	86
48. Vase with gilt design of landscape and figures in panels in red and green enamels	87
49. Plate with gilt design of dragon and phoenix in red enamel	88
50. Bowl with design of dragons amongst clouds in green enamel and anhua design of waves, Kangxi mark	89
51. Bowl with design of dragons in red enamel and waves in underglaze blue, Kangxi mark	89
52. Covered jar with gilt design of flowers in red enamel and underglaze blue	90
53. Plate with design of 'shou' medallions in blue enamel on a gold ground, Kangxi mark	91
54. Cup with design of 'shou' medallions in blue enamel on a gold ground, Kangxi mark	92
55. Mallet vase with gilt design of flowers and birds on a sprinkled blue ground	93
56. Mallet vase with gilt design of fish in red enamel on a sprinkled blue ground	94
57. Brushpot with design of calligraphy by Monk Huai Su on a sprinkled blue ground	95
58. Mallet vase with gilt design of flower basket on a red ground	96
59. Vase with design of lotus scrolls in opaque enamels on an aubergine ground, Kangxi mark	97
60. Bowl with design of peonies in opaque enamels on a yellow ground, Kangxi mark	98
61. Bowl with design of peonies in opaque enamels on a blue ground, Kangxi mark	98
62. Cup with design of peonies in opaque enamels in green panels on a red ground, Kangxi mark	99
63. Figure of the drunken Zhong Kui in fencai enamels, Kangxi mark	100
64. Waterpot with design of floral sprays in fencai enamels, Kangxi mark	101
65. Covered jar with design of dragon amongst green clouds and eight precious emblems in doucai enamels, Kangxi mark	102
66. Foliated flower - pot with design of figures in doucai enamels, Kangxi mark	103
67. Bowl with design of kui dragons in doucai enamels, imitation of Chenghua mark	104
68. Cup with design of kui dragon medallions in doucai enamels, Kangxi mark	105
69. Bowl with figure design in doucai enamels	106
70. Plate with design of floral sprays in susancai (enamel on biscuit)	108
71. Hexagonal censer in openwork with design of plum flowers in sancai enamels on a brocade ground	109
72. Oval box with design of phoenix in sancai enamels on a yellow ground	110
73. Plate set with design of flowers in sancai enamels on a yellow ground	111
74. Large plate with a flattened rim and design of dragons in purplish red, green and sancai enamels on a yellow ground, Kangxi mark	112
75. Bowl with design of dragons in red enamel on a yellow ground, Kangxi mark	113
76. Bowl with design of dragons amongst clouds in purple enamel on a yellow ground, Kangxi mark	114

77. Bowl with design of clouds in purple enamel on a green ground, Kangxi mark	114
78. Bowl in sancai enamels imitating 'tiger - skin' glaze, Kangxi mark	115
79. Guanyin zun vase in langyao red glaze	116
80. Upright mouth vase with in langyao red glaze	117
81. Pipa zun vase in langyao red glaze	118
82. Turnip - shaped vase in peach - bloom glaze, Kangxi mark	119
83. Willow - leaf vase in peach - bloom glaze, Kangxi mark	120
84. Seal vermilion box in peach - bloom glaze, Kangxi mark	121
85. Meiping vase in sacrificial red glaze	122
86. Monk's cap ewer in sacrificial red glaze, imitation of Xuande mark	123
87. Bowl in sacrificial red glaze, Kangxi mark	124
88. Turnip - shaped vase with relief design of dragons amongst waves in eastern blue celadon glaze, Kangxi mark	125
89. Zun vase with ears in the shape of chi dragons and anhua design of taotie animal mask in sky - blue glaze	126
90. Washer in sky - blue glaze, Kangxi mark	127
91. Meiping vase with anhua design of ears in the shape of new moon in sky - blue glaze, Kangxi mark	128
92. Gu vase with anhua design of taotie animal mask in peacock - green glaze	129
93. Covered jar with relief design of dragons amongst clouds in peacock - green glaze, imitation of Xuande mark	130
94. Gu vase with anhua design of banana leaves in peacock - green glaze	131
95. Figure of a lion in peacock - green glaze	132
96. Vase with two ears in the shape of chi dragons in aubergine glaze, Kangxi mark	133
97. Cup and saucer dish with anhua design of chi dragons in light green glaze	134
98. Cup with two dragon - shaped ears and anhua design of chi dragons in yellow glaze, Kangxi mark	134
99. Ewer with dragon - shaped handle, phoenix - shaped spout and anhua design of kui dragons in yellow glaze	135
100. Basin with handle and anhua design of key - fret patterns in white glaze	136

YONGZHENG

1. Meiping vase with design of the three friends of winter in underglaze blue	157
2. Olive - shaped vase with design of peaches and bats in underglaze blue, Yongzheng mark	158
3. Flask with two ears and design of flowers and birds in underglaze blue, Yongzheng mark	159
4. Vase in two sections with chi shaped handles and design of lotus scrolls in underglaze blue, Yongzheng mark	160
5. Watering can with handle and design of chrysanthemum petals in underglaze blue, Yongzheng mark	161
6. Large plate with design of flowers and birds in underglaze blue	162
7. Vase with two ears and design of white clouds and dragons in underglaze blue, Yongzheng mark	163
8. Covered jar with design of phoenix amongst flowers in underglaze blue and red, imitated mark of Xuande	164
9. Vase with design of pines, bamboos and plum flowers in underglaze blue and red, Yongzheng mark	165
10. Flask with two ears and design of three fruits in underglaze blue and red, Yongzheng mark	166
11. Deer - head - shaped zun vase with design of lotus scrolls in underglaze blue and rouge enamel, Yongzheng mark	167
12. Brushpot with design of Lanting Hui in red, with underglaze blue	168
13. Meiping vase with design of dragon reserved in white and waves in underglaze red, Yongzheng mark	169
14. Decagonal bowl with design of grapes in underglaze red on a sky - blue ground, Yongzheng mark	170
15. Meiping vase with design of floral scrolls in doucai enamels, Yongzheng mark	171

16. Garlic – head vase with handles in the shape of ruyi pattern and floral sprays in doucai enamels, Yongzheng mark	172
17. Large zun vase in the shape of chrysanthemum with design of outlined lotus scrolls in doucai enamels, imitated mark of Chenghua	173
18. Covered jar with design of chrysanthemum and butterfly medallions in doucai enamels, Yongzheng mark	174
19. Bowl with chicken – shaped cover and design of flowers, plants and insects in doucai enamels	175
20. Bowl with design of chrysanthemum and butterfly medallions in doucai enamels, Yongzheng mark	176
21. Plate with reclining legs and design of mandarin ducks in a lotus pond in doucai enamels, Yongzheng mark	177
22. Plate with design of mythical beast on the sea in doucai enamels, Yongzheng mark	178
23. Vase with an upright mouth and design of flowers and butterflies in fencai enamels, Yongzheng mark	179
24. Vase with plate – shaped mouth and design of peonies in fencai enamels, Yongzheng mark	180
25. Vase with tubular handles and design of peonies in fencai enamels on a coral red ground, Yongzheng mark	181
26. Meiping vase with design of figures in fencai enamels, Yongzheng mark	182
27. Globular vase with design of six peaches in fencai enamels, Yongzheng mark	183
28. Globular vase with design of nine quails in fencai enamels, Yongzheng mark	184
29. Covered box with openwork design in fencai enamels, Yongzheng mark	185
30. Bowl with incurved waist and design of butterflies and flowers in fencai enamels	186
31. Bowl with design of butterfly medallions in fencai enamels, Yongzheng mark	186
32. Bowl with design of ribbons and red bats in fencai enamels, Yongzheng mark	187
33. Large plate with design of floral sprays extending from underside into the interior surface in fencai enamels, Yongzheng mark	188
34. Jar with design of female figures in wucai enamels, Yongzheng mark	189
35. Bowl with characters ‘Fu’ and ‘Lu’ in wucai enamels, Yongzheng mark	190
36. Plate with design of figures in wucai enamels, imitated mark of Chenghua	191
37. Plate with design of figures in wucai enamels, imitated mark of Chenghua	192
38. Olive – shaped vase with design of three friends of winter in opaque enamels, Yongzheng mark	193
39. Bowl with design of plum flowers and poem inscriptions in opaque enamels on a yellow ground, Yongzheng mark	194
40. Bowl with design of orchid and rocks in opaque enamels on a yellow ground, Yongzheng mark	194
41. Bowl with design of landscape in blue and opaque enamels, Yongzheng mark	195
42. Bowl with design of dragons amongst clouds in yellow and opaque enamels, Yongzheng mark	196
43. Olive – shaped vase with design in green enamels on a yellow ground, Yongzheng mark	197
44. Bowl with design of white cranes amongst green waves and clouds on a yellow ground, Yongzheng mark	198
45. Bowl with design of bats amongst clouds in fencai enamels on a yellow ground, Yongzheng mark	198
46. Brushpot with design of landscape in sepia ink on a glazed ground in imitation of wood texture	199
47. Garlic – head vase with design of kui dragons in red enamels, Yongzheng mark	200
48. Covered box with design of white flowers and butterflies on a red ground, Yongzheng mark	201
49. Plate with design of white fish with buff underglaze, Yongzheng mark	202
50. Plate with design of white fish on a sacrificial red ground, Yongzheng mark	203
51. Stem – bowl with gilt design of dragons amongst clouds on a black ground, Yongzheng mark	204
52. Zun vase with mouth in the shape of yi ladle in guan celadon glaze, Yongzheng mark	205
53. Square vase with tubular handles in guan celadon glaze	206
54. Washer in the shape of peach in guan celadon glaze	207
55. Teapot in guan celadon glaze, Yongzheng mark	208
56. Bowl in guan celadon glaze, Yongzheng mark	209

57. Spittoon in ge celadon glaze, Yongzheng mark	210
58. Vase with design of three rams in ge celadon glaze, Yongzheng mark	211
59. Square zun vase with archaic bronze design in ge celadon glaze, Yongzheng mark	212
60. Flask with animal-shaped handles in ge celadon glaze, Yongzheng mark	213
61. Flask with two ears in imitation of ru glaze	214
62. Vase with two ears and halberd protrusions in sky-blue glaze, Yongzheng mark	215
63. Vase with two dragon-shaped handles in sky-blue glaze, Yongzheng mark	216
64. Mortar jar in sky-blue glaze with stand in aubergine glaze, Yongzheng mark	217
65. Vase with straight neck and lotus-shaped mouth and relief design of kui dragon and phoenix in light blue glaze, Yongzheng mark	218
66. Zun vase in the shape of flower petals and moulded floral design in light blue glaze, Yongzheng mark	219
67. Flask with handles in the shape of parrot in light blue glaze, Yongzheng mark	220
68. Monk's cap ewer in light blue glaze, Yongzheng mark	221
69. Vase with three loop handles and in the shape of a turnip in light blue glaze, Yongzheng mark	222
70. Vase with moulded chrysanthemum petals and string patterns in light-blue glaze, Yongzheng mark	223
71. Small covered pot with tubular ears in eastern-blue glaze, Yongzheng mark	224
72. Zun vase with pigeon-shaped handles and relief floral design in eastern blue celadon glaze, Yongzheng mark	225
73. Vase with tubular handles in flambe glaze, Yongzheng mark	226
74. Vase with string patterns in flambe glaze, Yongzheng mark	227
75. Zun vase with design of panchi dragons in flambe glaze, Yongzheng mark	228
76. Taibai tan (waterpot) in sky-blue and jun glaze, Yongzheng mark	229
77. Teapot with moulded chrysanthemum petals in sky-blue and jun glaze, Yongzheng mark	230
78. Pear-shaped vase in sacrificial red glaze, Yongzheng mark	231
79. Spittoon in sacrificial blue glaze, Yongzheng mark	232
80. Mortar jar in blue glaze, Yongzheng mark	233
81. Zun vase with animal-shaped handles in robin's egg glaze, Yongzheng mark	234
82. Zun vase with Loutturned mouth and relief design of kui dragons intertwined with lingzhi vines in peacock green glaze	235
83. Zun vase with design of chrysanthemum petals in peacock green glaze	236
84. Vase with ruyi-shaped handles and moulded design of lotus scrolls in green glaze, Yongzheng mark	237
85. Small bowl in coral-red glaze, Yongzheng mark	238
86. Censer with two handles in coral-red glaze	238
87. Small bowl in rouge glaze, Yongzheng mark	239
88. Garlic-head vase in light pink glaze, Yongzheng mark	240
89. Small vase in light yellow glaze, Yongzheng mark	241
90. Small bowl in light yellow glaze, Yongzheng mark	242
91. Zun vase with ox-shaped handles in teadust glaze, Yongzheng mark	243
92. Zun vase with two handles in iron-rust glaze, Yongzheng mark	244
93. Watering-can in guan celadon glaze, Yongzheng mark	245
94. Melon-shaped jar in crab-shell celadon glaze, Yongzheng mark	246
95. Washer in the shape of lotus leaf in longquan celadon glaze	247
96. Vase in the shape of twin-fish in white glaze, Yongzheng mark	248
97. Covered jar with relief design of kui dragons in white glaze, Yongzheng mark	249
98. Covered jar with relief design of flowers in white glaze, Yongzheng mark	250
99. Plate in the shape of chrysanthemum in coloured glaze, Yongzheng mark	251
100. Basin in the glaze in imitation of wood texture, Yongzheng mark	252

QIANLONG

1. Large vase with tubular handles and design of lotus flowers in underglaze blue, Qianlong mark	269
2. Vase with a flower – shaped mouth and design of mountains and sea in underglaze blue	270
3. Vase with handles in the shape of chi dragon and design of eight precious emblems in underglaze blue, Qianlong mark	271
4. Tibetan ewer with design of lotus scrolls and eight precious emblems in underglaze blue, Qianlong mark	272
5. Zun vase in form of three sacrificial animals with gilt design of butterflies in underglaze blue, Qianlong mark	273
6. Vase in underglaze blue with two handles and design of outlined lotus scrolls in red enamel, Qianlong mark	274
7. Flask with two ears and design of dragons amongst clouds in rouge enamels with underglaze blue, Qianlong mark	275
8. Bowl with design of dragons amongst waves in red enamel on a yellow ground, Qianlong mark	276
9. Cup and saucer dish with design of dragons amongst clouds in red enamels on a white ground, Qianlong mark	276
10. Covered box with design of bats, ‘Wan’ character and flowers in fencai enamels, Qianlong mark	277
11. Globular vase with design of birds and plum flowers in fencai enamels, Qianlong mark	278
12. Zun vase with two handles and design of a hundred deer in fencai enamels, Qianlong mark	279
13. Lantern – shaped vase with design of children – at – play in fencai enamels, Qianlong mark	280
14. Vase with design of nine elders in fenci enamels, Qianlong mark	281
15. Lantern – shaped zun vase with design of landscape in fencai enamels, Qianlong mark	282
16. Lantern – shaped vase with design of eight immortals celebrating birthday in fencai enamels, Qianlong mark	283
17. Flask with three holes and design of landscape and figures in panels in fencai enamels on a light blue ground, Qianlong mark	284
18. Vase with ears in the shape of chi dragons and design of floral sprays in fencai enamels, Qianlong mark	286
19. Zun vase with two ears and design of a hundred deer in fencai enamels, Qianlong mark	287
20. Lantern – shaped zun vase with design of three fruit sprays in fencai enamels, Qianlong mark	288
21. Vase with poem inscriptions and design of lotus flowers in panels in fencai enamels, Qianlong mark	289
22. Vase in openwork with lid and design of landscape in panels in fencai enamels, Qianlong mark	290
23. Zun vase with design of cloth wrapper and outlined lotus scrolls in fencai enamels on a green ground, Qianlong mark	292
24. Three adjoined vase in the shape of gourds in fencai enamels on a turquoise ground, Qianlong mark	293
25. Meiping vase with design of outlined lotus scrolls in fencai enamels and incised with meanders on a purplish red ground, Qianlong mark	294
26. Waterpot with design of lotus flowers in fencai enamels and incised with meanders on a purplish red ground, Qianlong mark	295
27. Vase with ears in the shape of elephant and design of phoenixes amongst clouds in fencai enamels on a blue ground, Qianlong mark	296
28. Vase with gilt relief design of peaches in fencai enamels on a brown ground, Qianlong mark	297
29. Vase with molding of children design in fencai enamels, Qianlong mark	298
30. Gourd – shaped vase with design of bats in red and green enamels, Qianlong mark	299
31. Bowl with design of flowers and butterflies in fencai enamels, Qianlong mark	300
32. Teapot with design of chrysanthemums in panels in fencai enamels on a rose pink ground, Qianlong mark	300