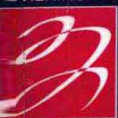


LIPPINCOTT
WILLIAMS &
WILKINS



SPIRAL[®]
MANUAL

(英文原版)

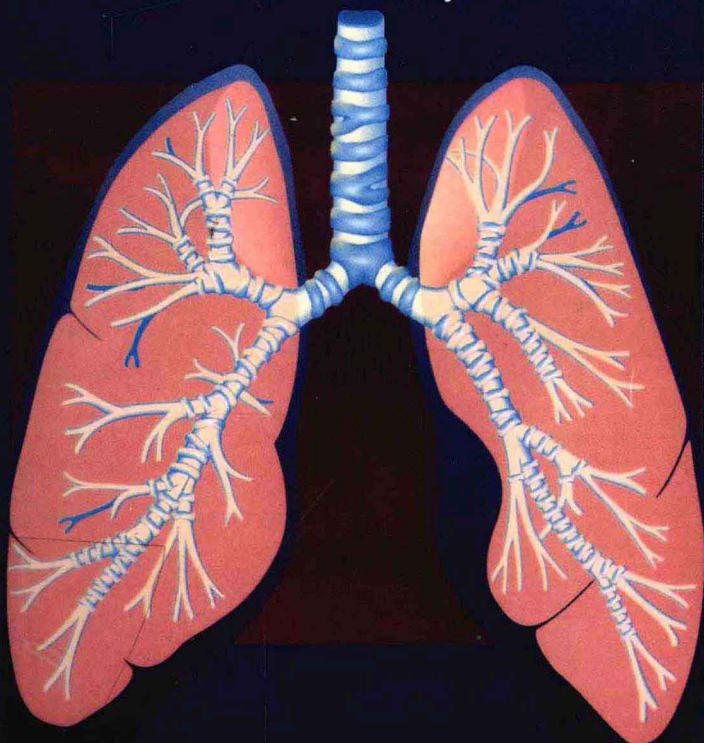
Manual of Clinical Problems in Pulmonary Medicine

Fifth Edition

配英汉索引

肺疾病临床手册

Edited by
Richard A. Bordow
Andrew L. Ries
Timothy A. Morris



Lippincott Williams & Wilkins Inc. 授权

天津科技翻译出版公司出版

LIPPINCOTT
WILLIAMS &
WILKINS



SPIRAL[®]
MANUAL

(英文原版)

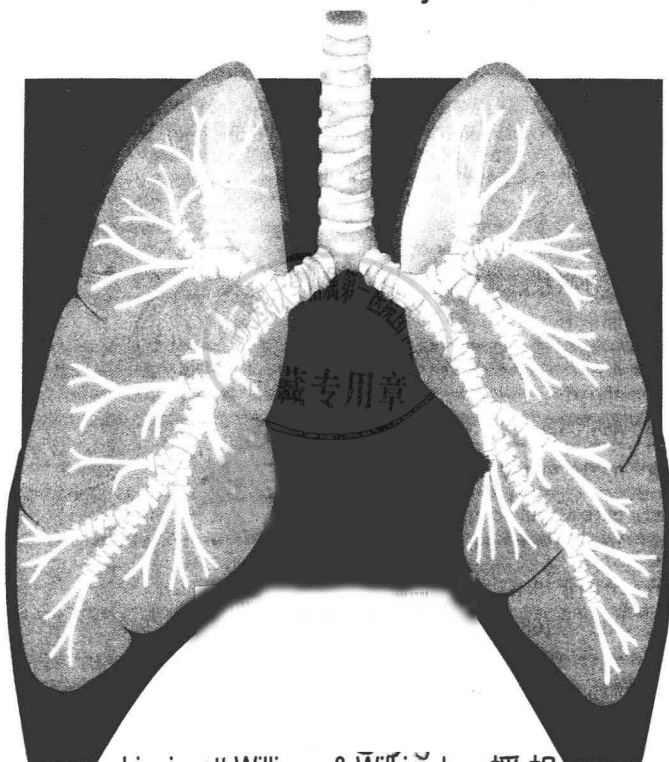
Manual of Clinical Problems in Pulmonary Medicine

Fifth Edition

配英汉索引

肺疾病临床手册

Edited by
Richard A. Bordow
Andrew L. Ries
Timothy A. Morris



Lippincott Williams & Wilkins Inc. 授权

天津科技翻译出版公司出版

著作权合同登记号:图字:02-2002-83

图书在版编目(CIP)数据

肺疾病临床手册 = Manual of Clinical Problems in Pulmonary Medicine/(美)博道
(Bordow, R. A.)等编著. - 影印本. - 天津:天津科技翻译出版公司, 2003.1

(SPIRAL[®] MANUAL 系列丛书)

ISBN 7-5433-1613-7

I. 肺... II. 博... III. 肺疾病-诊疗-手册-英文 IV. R563-62

中国版本图书馆 CIP 数据核字(2002)第 073086 号

Copyright © 2001 by Lippincott Williams & Wilkins Inc.

All rights reserved. This book is protected by copyright. No part of this book may be reproduced in any form or by any means, including photocopying, or utilized by any information storage and retrieval system without written permission from the copyright owner.

Reprint authorized by Lippincott Williams & Wilkins Inc. Reprint is authorized for sale in the People's Republic of China only.

授权单位: Lippincott Williams & Wilkins Inc.

出版: 天津科技翻译出版公司

出版人: 邢淑琴

地址: 天津市南开区白堤路 244 号

邮政编码: 300192

电话: 022-87893561

传真: 022-87892476

E-mail: tstitbc@public.tpt.tj.cn

印刷: 天津市蓟县宏图印务有限公司印刷

发行: 全国新华书店

版本记录: 900×1168 32 开本 20.125 印张 620 千字

2003 年 1 月第 1 版 2003 年 1 月第 1 次印刷

定价: 50.00 元

(如发现印装问题, 可与出版社调换)

MANUAL OF CLINICAL PROBLEMS IN PULMONARY MEDICINE

FIFTH EDITION

Editors

Richard A. Bordow, M.D.

Associate Director, Pulmonary Function Lab, Doctors' Hospital,
San Pablo, California

Andrew L. Ries, M.D., M.P.H.

Professor of Medicine, University of California, San Diego, School of
Medicine, La Jolla, California; Director, Pulmonary Rehabilitation,
University of California, San Diego, Medical Center, San Diego, California

Timothy A. Morris, M.D.

Associate Professor of Medicine, Division of Pulmonary and Critical Care
Medicine, University of California, San Diego, School of Medicine, La Jolla,
California; Medical Director, Respiratory Care Department, University of
California, San Diego, Medical Center, San Diego, California



LIPPINCOTT WILLIAMS & WILKINS

A **Wolters Kluwer** Company

Philadelphia • Baltimore • New York • London
Buenos Aires • Hong Kong • Sydney • Tokyo

Acquisitions Editor: Joyce-Rachel John
Developmental Editor: Lisa Consoli
Production Editor: Aureliano Vázquez, Jr.
Manufacturing Manager: Colin Warnock
Cover Designer: Patricia Gast
Compositor: Circle Graphics
Printer: R.R. Donnelley, Crawfordsville

© 2001 by LIPPINCOTT WILLIAMS & WILKINS
530 Walnut Street
Philadelphia, PA 19106 USA
LWW.com

All rights reserved. This book is protected by copyright. No part of this book may be reproduced in any form or by any means, including photocopying, or utilized by any information storage and retrieval system without written permission from the copyright owner, except for brief quotations embodied in critical articles and reviews. Materials appearing in this book prepared by individuals as part of their official duties as U.S. government employees are not covered by the above-mentioned copyright.

Printed in the USA

Library of Congress Cataloging-in-Publication Data

Manual of clinical problems in pulmonary medicine/[edited by] Richard A. Bordow, Andrew L. Ries, Timothy A. Morris.—5th ed.
p.; cm.

Includes bibliographical references and index.

ISBN 0-7817-2356-6

1. Lungs—Diseases—Handbooks, manuals, etc. I. Bordow, Richard A. II. Ries, Andrew L. III. Morris, Timothy A.

[DNLM: 1. Lung Diseases—Handbooks. WF 39 M2943 2000]

RC756 .M26 2000

616.2'4—dc21

00-032738

Care has been taken to confirm the accuracy of the information presented and to describe generally accepted practices. However, the authors, editors, and publisher are not responsible for errors or omissions or for any consequences from application of the information in this book and make no warranty, expressed or implied, with respect to the currency, completeness, or accuracy of the contents of the publication. Application of this information in a particular situation remains the professional responsibility of the practitioner.

The authors, editors, and publisher have exerted every effort to ensure that drug selection and dosage set forth in this text are in accordance with current recommendations and practice at the time of publication. However, in view of ongoing research, changes in government regulations, and the constant flow of information relating to drug therapy and drug reactions, the reader is urged to check the package insert for each drug for any change in indications and dosage and for added warnings and precautions. This is particularly important when the recommended agent is a new or infrequently employed drug.

Some drugs and medical devices presented in this publication have Food and Drug Administration (FDA) clearance for limited use in restricted research settings. It is the responsibility of the health care provider to ascertain the FDA status of each drug or device planned for use in their clinical practice.

10 9 8 7 6 5 4 3 2 1

To

Kenneth M. Moser, M.D.

Healer

Mentor

Friend

This book is dedicated to the memory of Kenneth Miles Moser
("KM" to his students and colleagues),
a man of principle and vision, with an uncanny ability
to illuminate complex concepts for his students.

He was attentive and supportive to all
who were lucky enough to come under his tutelage, and
inspired each of us to "reach for the stars."

In gratitude for his tireless efforts,
we endeavor to carry on his mission of education.

CONTRIBUTING AUTHORS

Dennis E. Amundson, D.O., F.A.C.P., F.C.C.P., F.C.C.M.

Program Director, Pulmonary and Critical Care Medicine, Naval Medical Center; Associate Professor of Internal Medicine, Uniformed Services University of the Health Sciences, 34730 Bob Wilson Drive, San Diego, California 92134

William R. Auger, M.D.

Associate Professor of Clinical Medicine, University of California, San Diego, School of Medicine, La Jolla, California; Medical Director, Thornton ICU, Pulmonary and Critical Care Medicine Department, University of California, San Diego, Medical Center, 200 West Arbor Drive, San Diego, California 92103

John E. Barkley, M.D., F.C.C.P.

Director, Multi-Disciplinary Thoracic Oncology Program, The Lung Center, Mercy Hospital, 2001 Vail Avenue, Charlotte, North Carolina 28207

Frank D. Bender, M.D.

Director, Respiratory Therapy, Palomar Hospital, Escondido Pulmonary Medical Group, 488 East Valley Parkway, Suite 314, Escondido, California 92025-3376

Timothy D. Bigby, M.D.

Associate Professor of Medicine, University of California, San Diego School of Medicine, La Jolla, California; Chief, Pulmonary and Critical Care, Veterans Administration, San Diego Healthcare System, 3350 La Jolla Village Drive, 111J, San Diego, California 92161

Richard A. Bordow, M.D.

Associate Director, Pulmonary Function Lab, Doctors' Hospital, 2000 Vale Road, San Pablo, California 94806

Stephen P. Bradley, M.D.

Staff Physician, Chest and Critical Care Medicine, Scripps Clinic, 10666 North Torrey Pines Road, La Jolla, California 92037

Shari A. Brazinsky, M.D.

Clinical Instructor of Pulmonary Medicine, University of California, San Diego, School of Medicine, La Jolla, California; Chief of Medicine, Alvarado Hospital Medical Center, 6655 Alvarado Road, San Diego, California 92120

Stephanie K. Brodine, M.D.

Professor and Head, Epidemiology and Biostatistics, Graduate School of Public Health, San Diego State University, San Diego, California, 751 Rosecrans Street, San Diego, California 92106

David M. Burns, M.D.

Professor of Medicine, University of California, San Diego, School of Medicine, La Jolla, California; University of California, San Diego, Medical Center, 200 West Arbor Drive, San Diego, California 92103

Antonino Catanzaro, M.D.

Professor of Medicine, University of California, San Diego, School of Medicine, La Jolla, California; University of California, San Diego, Medical Center, 200 West Arbor Drive, San Diego, California 92103

Richard N. Channick, M.D.

Associate Professor of Medicine, University of California, San Diego, School of Medicine, La Jolla, California; University of California, San Diego, Medical Center, 200 West Arbor Drive, San Diego, California 92103

Jayne E. Chu, M.D.

Fellow, Division of Pulmonary and Critical Care Medicine, University of California, San Diego, School of Medicine, La Jolla, California; University of California, San Diego, Medical Center, 200 West Arbor Drive, San Diego, California 92103

Paul Cianci, M.D.

Medical Director of Diving & Hyperbaric Medicine, John Muir Medical Center, 2000 Vale Road, San Pablo, California 94806

Timothy M. Clark, M.D.

Fellow, Division of Pulmonary and Critical Care Medicine, University of California, San Diego, School of Medicine, La Jolla, California; University of California, San Diego, Medical Center, 200 West Arbor Drive, San Diego, California 92103

Jack L. Clausen, M.D.

Professor of Medicine, University of California, San Diego, School of Medicine, La Jolla, California; Medical Director, PFT and Exercise Laboratory, University of California, San Diego, Medical Center, 200 West Arbor Drive, San Diego, California 92103

Henri G. Colt, M.D.

Associate Professor of Pulmonary and Critical Care Medicine, University of California, San Diego, School of Medicine, La Jolla, California; Chief of Interventional Pulmonology, University of California, San Diego, Medical Center, La Jolla, 9300 Campus Point Drive, La Jolla, California 92037

Douglas J. Conrad, M.D.

Assistant Professor of Medicine, University of California, San Diego, School of Medicine, La Jolla, California; Veterans Administration, San Diego Healthcare System, 3350 La Jolla Village Drive 111J, San Diego, California 92161-0001

Stephen W. Crawford, M.D.

Clinical Professor of Pulmonary and Critical Care Medicine, University of California, San Diego, School of Medicine, La Jolla, California; University of California, San Diego, Medical Center, 9300 Campus Point Drive, La Jolla, California 92037

Gehan Devendra, M.D.

Fellow, Division of Pulmonary and Critical Care Medicine, University of California, San Diego, School of Medicine, La Jolla, California; University of California, San Diego, Medical Center, 200 West Arbor Drive, San Diego, California 92103

Asha Vyas Devereaux, M.D., M.P.H.

Staff, Pulmonary Medicine, Naval Medical Center, 34730 Bob Wilson Drive, San Diego, California 92134-3301

David W. Dockweiler, M.D.

Staff Anesthesiologist, Scripps Memorial Hospital, La Jolla, California, 3650 Copper Crest, Encinitas, California 92024

Richard D. Drucker, M.D.

Assistant Clinical Professor of Medicine, University of California, Los Angeles, School of Medicine, Los Angeles, California; Staff Pulmonologist, Kaiser-Permanente Medical Center, Woodland Hills, California, 5601 Desoto Avenue, Woodland Hills, California 91365

Peter F. Fedullo, M.D.

Professor of Pulmonary and Critical Care Medicine, University of California, San Diego, School of Medicine, La Jolla, California; Director, Medical Intensive Care Unit, University of California, San Diego, Medical Center, 200 West Arbor Drive, San Diego, California 92103

Richard M. Ford, B.S., R.R.T.

Director, Respiratory Services, University of California, San Diego, Medical Center, 200 West Arbor Drive, San Diego, California 92103

Paul J. Friedman, M.D.

Professor of Radiology, University of California, San Diego, School of Medicine, La Jolla, California; Chief of Chest Radiology, University of California, San Diego, Medical Center, 200 West Arbor Drive, San Diego, California 92103

Mark M. Fuster, M.D.

Fellow, Division of Pulmonary and Critical Care Medicine, University of California, San Diego, School of Medicine, La Jolla, California; University of California, San Diego, Medical Center, 200 West Arbor Drive, San Diego, California 92103

James H. Harrell, II, M.D.

Professor of Medicine, University of California, San Diego, School of Medicine, La Jolla, California; Director, Pulmonary Special Procedures Unit, University of California, San Diego, Medical Center, 200 West Arbor Drive, San Diego, California 92103

Deborah Ann Hoffman, M.D.

Clinical Instructor, Division of Pulmonary and Critical Care Medicine, University of California, San Diego, School of Medicine, La Jolla, California; University of California, San Diego, Medical Center, 200 West Arbor Drive, San Diego, California 92103

William G. Hughson, M.D., Ph.D.

Clinical Professor of Medicine, University of California, San Diego, School of Medicine, La Jolla, California; Director, Center for Occupational and Environmental Medicine, University of California, San Diego, Medical Center, 200 West Arbor Drive, San Diego, California 92103

Shazia M. Jamil, M.D.

Clinical Instructor, Division of Pulmonary and Critical Care Medicine, University of California, San Diego, School of Medicine, La Jolla, California; University of California, San Diego, Medical Center, 200 West Arbor Drive, San Diego, California 92103

Robert M. Jasmer, M.D.

Assistant Professor of Medicine, University of California, San Francisco, School of Medicine, San Francisco, California; San Francisco General Hospital, 1001 Potrero Avenue, Room 5K-1, San Francisco, California 94110

David P. Kapelanski, M.D., F.A.C.S.

Associate Professor of Surgery, University of California, San Diego, School of Medicine, La Jolla, California; University of California, San Diego, Medical Center, 200 West Arbor Drive, San Diego, California 92103

Kim M. Kerr, M.D.

Assistant Professor of Pulmonary and Critical Care Medicine, University of California, San Diego, School of Medicine, La Jolla, California; University of California, San Diego, Medical Center, 200 West Arbor Drive, San Diego, California 92103

Hyong S. Kim, M.D.

Fellow, Division of Pulmonary and Critical Care Medicine, University of California, San Diego, School of Medicine, La Jolla, California; University of California, San Diego, Medical Center, 200 West Arbor Drive, San Diego, California 92103

Robert J. Krukltitis, M.D., Ph.D.

Senior Medical Resident, Georgetown University Medical Center, 3800 Reservoir Road NW, Washington, D.C. 20007

David P. Kupferberg, M.D.

Fellow, Division of Pulmonary and Critical Care Medicine, University of California, San Diego, School of Medicine, La Jolla, California; University of California, San Diego, Medical Center, 200 West Arbor Drive, San Diego, California 92103

Carla R. Lamb, M.D.

Staff, Pulmonary and Critical Care Department, Naval Medical Center, 34730 Bob Wilson Drive, San Diego, California 92134-3301

Julian P. Lichter, M.D.

Associate Clinical Professor of Medicine, University of California, San Diego, School of Medicine, La Jolla, California; Chief of Pulmonary Medicine, Scripps Mercy Hospital, 4077 5th Avenue, San Diego, California 92103

Philip A. LoBue, M.D.

Assistant Clinical Professor of Medicine, University of California, San Diego, School of Medicine, La Jolla, California; Medical Epidemiologist, Division of Tuberculosis Elimination, Centers for Disease Control and Prevention, P.O. Box 85222, San Diego, California 92186

José S. Loredó, M.D., M.S., F.C.C.P.

Assistant Professor of Medicine, University of California, San Diego, School of Medicine, La Jolla, California; Co-Director, Pulmonary Sleep Disorders Laboratory, Veterans Administration San Diego Healthcare System, 3350 La Jolla Village Drive, San Diego, California 92161

Bao Quoc Luu, M.D.

Fellow, Division of Pulmonary and Critical Care Medicine, University of California, San Diego, School of Medicine, La Jolla, California; University of California, San Diego, Medical Center, 200 West Arbor Drive, San Diego, California 92103

Richard T. Mahon, M.D.

Staff, Pulmonary and Critical Care Medicine, Naval Medical Center, 34800 Bob Wilson Drive, San Diego, California 92134

Frank L. Mannino, M.D.

Professor of Pediatrics, University of California, San Diego, School of Medicine, La Jolla, California; Medical Director, Infant Special Care Center, University of California, San Diego, Medical Center, 200 West Arbor Drive, San Diego, California 92103

Mark L. Metersky, M.D.

Associate Professor of Pulmonary and Critical Care Medicine, University of Connecticut School of Medicine; Pulmonary and Critical Care Medicine Department, John Dempsey Hospital, 263 Farmington Avenue, Farmington, Connecticut 06030

Timothy A. Morris, M.D.

Associate Professor of Medicine, University of California, San Diego, School of Medicine, La Jolla, California; Medical Director, Respiratory Care Department, University of California, San Diego, Medical Center, 200 West Arbor Drive, San Diego, California 92103

Dominic A. Munafo, Jr., M.D.

Assistant Clinical Professor of Medicine, University of California, San Diego, School of Medicine, La Jolla, California; University of California, San Diego, Medical Center, 200 West Arbor Drive, San Diego, California 92103

Kevin M. Murray, M.D.

Associate Clinical Professor, University of California, San Diego, School of Medicine, La Jolla, California; Staff, Pulmonary Division, Kaiser Permanente Medical Group, 4647 Zion Avenue, San Diego, California 92120

Tom S. Neuman, M.D.

Adjunct Professor of Medicine and Surgery, University of California, San Diego, School of Medicine, La Jolla, California; Department of Emergency Medicine, University of California, San Diego, Medical Center, 200 West Arbor Drive, San Diego, California 92103

John Scott Parrish, M.D.

Staff, Department of Pulmonary Medicine, Naval Medical Center, 34730 Bob Wilson Drive, San Diego, California 92134-1410

Carolyn S. Ray, M.D.

Co-Director of Respiratory Services and Pulmonary Function Laboratory, Doctor's Medical Center, San Pablo, California, 2101 Vale Road, Suite 300, San Pablo, California 94806

Charles A. Read, M.D.

Associate Professor of Medicine and Surgery, Georgetown University Medical Center, 3800 Reservoir Road NW, Washington, D.C. 20007

Dana Richards, R.D., C.N.S.D.

Critical Care Dietitian, University of California, San Diego, Medical Center, 200 West Arbor Drive, San Diego, California 92103

Carl A. Riddick, M.D.

Staff, Department of Pulmonary and Critical Care Medicine, Providence St. Vincent Hospital, 9155 SW Barnes Road, Suite 830, Portland, Oregon 97225

Andrew L. Ries, M.D., M.P.H.

Professor of Medicine, University of California, San Diego, School of Medicine, La Jolla, California; Director, Pulmonary Rehabilitation, University of California, San Diego, Medical Center, 200 West Arbor Drive, San Diego, California 92103

William L. Ring, M.D.

Instructor in Medicine, University of California, San Diego, School of Medicine, La Jolla, California; Staff Physician, Scripps Clinic, 10666 North Torrey Pines Road, La Jolla, California 92037

Ann M. Romaker, M.D.

Clinical Associate Professor of Medicine, University of Missouri-Kansas City School of Medicine, 4320 Wornall Road, Suite 514, Kansas City, Missouri 64111

Lewis J. Rubin, M.D.

Professor of Medicine, and Director, Division of Pulmonary and Critical Care Medicine, University of California, San Diego, School of Medicine, La Jolla, California; University of California, San Diego, Medical Center, 200 West Arbor Drive, San Diego, California 92103

Kenneth J. Serio, M.D.

Clinical Instructor, University of California, San Diego, School of Medicine, La Jolla, California; Veterans Administration, San Diego Healthcare System, 3350 La Jolla Village Drive, 111J, San Diego, California 92161

Deborah Shure, M.D.

Professor and Director of Pulmonary and Critical Care Medicine, The University of Mississippi Medical Center, 2500 North State Street, Jackson, Mississippi 39216-4505

Cecilia M. Smith, D.O.

Professor of Pulmonary and Critical Care Medicine, University of California, San Diego, School of Medicine, La Jolla, California; Medical Director, and Associate Dean of Graduate Medical Education, University of California, San Diego, Medical Center, 200 West Arbor Drive, San Diego, California 92103

Robert M. Smith, M.D.

Associate Professor of Medicine, University of California, San Diego, School of Medicine, La Jolla, California; Associate Chief of Staff, Veterans Administration, San Diego Healthcare System, 3350 La Jolla Village Drive, 111J, San Diego, California 92161

Michael S. Stulbarg, M.D.

Professor of Clinical Medicine, University of California, San Francisco, School of Medicine, San Francisco, California, 505 Parnassus Avenue, San Francisco, California 94143-0111

Suzanne J. Timmer, M.D.

Fellow, Pulmonary and Critical Care Department, Naval Medical Center, 34730 Bob Wilson Drive, San Diego, California 92134-3301

Beat Walder, M.D.

Fellow, Division of Pulmonary and Critical Care Medicine, University of California, San Diego, School of Medicine, La Jolla, California; Department of Gastrointestinal, Liver, and Lung Diseases, University of Berne, CH-3010 Berne, Switzerland

Angela C. Wang, M.D.

Assistant Professor of Medicine, University of California, San Diego, School of Medicine, La Jolla, California; Veterans Administration, San Diego Healthcare System, 3550 La Jolla Village Drive, San Diego, California 92161

James H. Williams, Jr., M.D.

Adjunct Associate Professor of Medicine, Division of Pulmonary and Critical Care Medicine, University of California, Irvine, College of Medicine, Irvine, California, 101 The City Drive S., Bldg. 53, Route 81, Orange, California 92868-3298

Gordon L. Yung, M.D.

Assistant Professor of Pulmonary and Critical Care Medicine, University of California, San Diego, School of Medicine, La Jolla, California; Medical Director, Lung Transplant Program, University of California, San Diego, Medical Center, 200 West Arbor Drive, San Diego, California 92103

PREFACE

Nearly 20 years have passed since the publication of the first edition of the *Manual of Clinical Problems in Pulmonary Medicine*. That edition required almost three years from inception to publication, and its success set the stage for the ensuing editions. Now, we issue the fifth edition and, to our great regret, our teacher and inspiration, Dr. Kenneth Moser, is no longer with us. He is deeply missed. In his honor, all proceeds from the sale of this manual will be donated to the Kenneth M. Moser Fellowship Endowment established at UCSD. Dr. Moser always considered the Fellowship Program his “crown jewel.” This, in our small way, is an opportunity for us to thank him, to express our appreciation for the guidance and support that meant so much to so many, and to follow Dr. Moser’s example by contributing to the training of future leaders in our field.

Thanks to the internet, E-mail, and other joys of the electronic revolution, we have cut the development time by at least 50% from our previous editions. We hope that, with this edition, we present a compendium of the most current, authoritative, and well-referenced chapters pertaining to the 109 subjects selected. As has been our practice since the first edition, we have removed some of the older chapters and added new ones. Once again, we thank our dedicated group of contributors who have helped to produce this “Y2K” version in record time.

Finally, I thank my “new” co-editors, Andy Ries and Tim Morris, for the vast quantum of plain hard work that it took to organize and produce this manual. I am sure that K.M. would be proud of the result and comforted that future editions are in good and caring hands that will capture the spirit and quality of this manual—and this man.

RAB

ACKNOWLEDGMENTS

This book would not have been possible without the generous support and hard work of members and friends of the Division of Pulmonary and Critical Care Medicine at the University of California, San Diego (UCSD). Their commitment to this process has been unflagging since its inception. Our editors, Joyce-Rachel John and Lisa Consoli of Lippincott Williams & Wilkins, have quite simply been a delight; their humor and perspective helped us to find equilibrium during this sometimes exasperating process. We thank them for their guidance and patience. This project was administered and maintained mostly by E-mail, regular phone conferences, and a web site that we created. Remarkably, with everyone's cooperation, this book of many authors took less than a year from inception to completion. To Lela Prewitt and Cheryl Nelson, who assisted with the myriad administrative details, we owe a debt of gratitude. Our appreciation also to Richard Baron and Jim Baum and to Drs. Richard Stern, Risa Kagan, and Carolyn Ray for their valued counsel during this project.

Most importantly, we offer our personal thanks and love to Liz, Vivian, and Prudy for their constant support, understanding, and encouragement during the many early mornings and late nights we spent preparing this manuscript. We are grateful for these and countless other acts of support throughout our careers.

Contributing Authors

作者	xv
----------	----

Preface

前言	xxi
----------	-----

Acknowledgments

致谢	xxiii
----------	-------

I. PULMONARY DIAGNOSTIC TECHNIQUES 肺疾病诊断技术

1 Radiographic Evaluation of Lung Disease 肺疾病放射摄影评价	3
2 Special Procedures in Chest Radiology 胸部放射学的特殊操作程序	7
3 Pulmonary Function Testing 肺功能试验	10
4 Exercise 运动	19
5 Radioisotopic Techniques 放射性核素技术	22
6 Evaluation of Arterial Blood Gases and Acid-Base Homeostasis 动脉血气评价和酸碱平衡	26
7 Bronchoscopic Procedures 支气管镜操作程序	35
8 Lung Biopsy and Thoracoscopy 肺活组织检查和喉镜检查	43
9 Mediastinal Exploration 纵隔探查	47
10 Preoperative Pulmonary Evaluation 手术前肺评价	50
11 Right Heart Catheterization and Monitoring of Arterial Pressure 右心导管和肺动脉压监测	53

II. SPECIAL PROBLEMS 特殊问题

12	Pleural Effusion 胸腔积液	61
13	Pneumothorax 气胸	66
14	Hemoptysis 咯血	72
15	Aspiration 吸入异物	76
16	Middle Lobe Syndrome 中叶综合征	80
17	Complications Following Pulmonary Resection 肺切除术后并发症	82
18	Key Pulmonary Symptoms: Cough and Dyspnea 重要的肺症状:咳嗽和呼吸困难	86
19	The Lung in Pregnancy 妊娠期肺疾病	92
20	Hyperbaric Oxygen Therapy 高压氧治疗	96

III. PULMONARY INFECTION 肺感染

21	The Lung in Drug Abuse 药物滥用所致的肺感染	105
22	Pneumonia: General Considerations 肺炎:概论	111
23	Pneumococcal Pneumonia 肺炎球菌肺炎	115
24	Streptococcal and Staphylococcal Pneumonias 链球菌和葡萄球菌肺炎	120
25	Haemophilus Influenzae Infections 流感嗜血杆菌感染	124
26	Klebsiella Pneumonia 克雷伯杆菌肺炎	127
27	Other Gram-Negative Pneumonias: Pseudomonas aeruginosa,	

	Escherichia coli, Proteus, Serratia Enterobacter, Acinetobacter 其他革兰阴性菌肺炎:绿脓假单胞菌、大肠埃希杆菌、变形杆菌、 沙雷菌、肠杆菌、不动杆菌	129
28	Anaerobic Pulmonary Infections 厌氧菌肺感染	135
29	Empyema 脓胸	140
30	Atypical Pneumonias: Mycoplasma, Chlamydia, Q Fever, and Legionella 非典型肺炎:支原体、衣原体、Q热和军团杆菌	144
31	Viral Pneumonia 病毒性肺炎	149
32	Tuberculosis: Epidemiology and Prevention 结核:流行病学和预防	155
33	Tuberculosis: Syndromes 结核:综合征	159
34	Tuberculosis: Treatment 结核:治疗	163
35	Mycobacterial Infection Due to Mycobacteria Other Than Tuberculosis (MOTT) 由非结核杆菌的分枝杆菌(MOTT)引起的分枝杆菌感染	168
36	Coccidioidomycosis 球孢子菌病	172
37	Histoplasmosis 组织胞浆菌病	178
38	Blastomycosis 芽生菌病	183
39	Aspergillus Lung Disease 曲霉肺病	186
40	Nocardiosis 诺卡菌病	192
41	Cryptococcosis and Actinomycosis 隐球菌病和放线菌病	194
42	Nematode and Trematode Diseases of the Lung 肺线虫和吸虫病	201
43	Amebiasis and Echinococcal Diseases of the Lung	