



图书在版编目(CIP)数据

2012年AUBE(欧博设计)设计作品集/AUBE(欧博设计)编著. —天津: 天津大学出版社, 2013.3  
ISBN 978-7-5618-4645-2

I. ①2… II. ①深… III. ①建筑设计—作品集—中国—现代 IV. ①TU206

中国版本图书馆CIP数据核字(2013)第052460号

策划编辑 韩振平 郭颖  
责任编辑 韩振平

出版发行 天津大学出版社  
出版人 杨欢  
地 址 天津市卫津路92号天津大学内(邮编: 300072)  
电 话 发行部: 022-27403647  
网 址 [publish.tju.edu.cn](http://publish.tju.edu.cn)  
印 刷 深圳市国际彩印有限公司  
经 销 全国各地新华书店  
开 本 250mm×250mm  
印 张 21.5  
字 数 194千  
版 次 2013年3月第1版  
印 次 2013年3月第1次  
定 价 238.00元

2012年  
AUBE (欧博设计) 设计作品集  
规划·建筑·景观·工程

# 前言

## PREFACE

### 成长

在欧博十五周岁生日来临之前，这本2012年年鉴是全体欧博人提前献给它的一份礼物。

常常被问道：在这样一个大时代背景下，欧博是如何成长的？十五年前，十年前，五年前的它是怎样的？它的未来又将何去何从？

其实，这些问题从欧博人自身成长经历上就能找到答案。

十五年前，作为欧博人的你，背着行囊，从巴黎、从中国各地来到深圳这个改革开放的前沿城市。面对形形色色的案例，加班熬夜换来的常常是激情被打压，理想被消磨……你渐渐学会了少谈主义，多研究问题。你坚持了理想，坚持了专业进步，坚持了职业的成就，获取了竞争的机会。

十年前，作为欧博人的你，有了自己的家。面对家庭压力，世俗功利，你怀疑过，犹豫过。最终，现实也没能让你被别人的价值观消费掉，你坚定地做回了自己。面对专制美学挟持下的脆弱设计，你变得越来越坚强。你坚持了下来，换来了成熟的蜕变。

五年前，作为欧博人的你，已身为入父或入母，有了责任和担当。汹涌的城市扩张，让你终日被进度追杀，为来不及思考而懊恼，但你以真诚的态度，感受着每根线条所带来的重量、温度和质感，体会着每张图纸依靠你的情感和智慧转化成了现实的快乐。你坚持了下来，赢得了欣赏的目光。

虽然有种种遗憾……但作为欧博人的你，始终没有因为坚持而后悔，因为你从未因坚持而一无所获。

欧博人的成长成就了欧博过去的十五年，也将成就欧博的未来。

欧博设计

董事执行总建筑师 丁荣

## **GROWTH**

Before the coming of the fifteenth birthday of Aube, all Aube employees present the yearbook of 2012 as a gift.

It is frequently asked that: how does Aube grow up during this great era? What was it like 15 years, 10 years or 5 years ago? Where does it forge forward in the future?

In fact, answers of all these questions can be found from the growing experience of Aube employees.

15 years ago, you, as one of Aube Family, with your luggage, traveled from Paris and from every corner of China to Shenzhen—a leading-edge city of reformation and opening up. In face with all sorts of cases, what overtime work and staying-up contributed to was usually the suppressed passion and worn-down dream... You gradually learned to talk less about doctrines and research more on problems. You persisted in your dream, professional progress and professional achievements, and won opportunities of competition.

10 years ago, you, as one of Aube Family, formed your own family. Confronted with family pressure and worldly desire, you also doubted and hesitated. Finally, even the reality failed to consume you by other's values and you restored yourself with determination. Faced with the fragile design hijacked by autocratic aesthetics, you tended to be stronger. You made it by your persistence and went matured in return.

5 years ago, you, as one of Aube Family, became a father or mother shouldering responsibilities and undertaking obligations. Turbulent urban expansion placed you under the pressure of being chased by schedule every day, and you were annoyed by lack of time for pondering. But you had been feeling the weight, warmth and texture brought by every line with sincere attitude, and experiencing the actual joy transferred from every drawing relying on your feelings and wisdom. You made it by your persistence and won the appreciation of people.

Even with numerous regrets, you, as one of Aube Family, never repented of your insistence, since you never drew a blank because of your insistence.

The growing of Aube employees has created the past 15 years of Aube, and will also create the future of Aube.

**AUBE Conception**  
**Director and Chief Executive Architect: Ding Rong**

# 目录

## CONTENTS

### GUIYANG ZHONGTIAN · FUTURE ARK 贵阳中天·未来方舟

- 008 Guiyang Zhongtian-Future Ark Commercial Complex with Imax Cinema  
贵阳中天·未来方舟巨幕影城商业综合体
- 012 Guiyang Zhongtian-Future Ark Group F3  
贵阳中天·未来方舟F3组团
- 016 Guiyang Zhongtian-Future Ark Guizhou Opera House  
贵阳中天·未来方舟贵州歌剧院
- 022 Guiyang Zhongtian-Future Ark Dongmao Center Boutique Commercial Street  
贵阳中天·未来方舟东懋中心风情商业街
- 026 Guiyang Zhongtian-Future Ark Kindergarten  
贵阳中天·未来方舟幼儿园

### URBAN PLANNING 规划

- 034 Urban Design of a City Belt Along the Second Ring Road, Guiyang  
贵阳二环四路城市带城市设计
- 038 Urban Design of Riverside Scenery Belt, Xiangyang  
襄阳滨江风光带城市设计
- 042 Conceptual Planning of the OCT Coastal Project in Bao'an District, Shenzhen  
华侨城深圳宝安中心区滨海片区概念计划
- 046 Conceptual Urban Design of OCT French Railway Tourist Town, Yunnan  
华侨城云南法国铁路文化旅游小镇概念性城市设计
- 050 General Planning of the Industrial Park of Gedian Economic Development Zone in Ezhou, Hubei  
湖北鄂州葛店经济开发区工业园整体规划
- 056 Urban Planning of International Financial City, Guangzhou  
广州国际金融城城市规划方案设计
- 062 Planning & Architectural Design of CTS Bath Town (Phase 1), Anshan  
港中旅·鞍山巴斯小镇一期住宅规划与建筑方案设计
- 064 Conceptual Planning of the 3512 Leather Factory Site on the North Bank of the Yellow River, Lanzhou  
兰州黄河北岸3512皮革厂用地概念性规划方案设计
- 068 Planning & Architectural Design of Urban Renewal of Yangmeigang and Geshui Village in Longgang District, Shenzhen  
深圳龙岗杨梅岗、格水村城市更新规划与建筑方案设计
- 072 Conceptual Planning of Top Spring Buji Wholesale Market of Agricultural Products, Shenzhen  
深圳莱蒙布吉农批市场概念规划

### ARCHITECTURE 建筑

- 080 Architectural Design of a 9-Year School in the Southwest of Houfang Luyu in Yantian District, Shenzhen  
深圳盐田后方陆域西南片区九年一贯制学校
- 084 Architectural Design of the Medium & Small Enterprises Headquarters Tower, Shenzhen  
深圳海纳百川总部大厦
- 092 Architectural Design of Ludan Tower, Shenzhen  
深圳鹿丹大厦
- 096 Architectural Design of Shiyan Sports Center, Shenzhen  
深圳石岩体育中心

- 100 Architectural Design of The Nepstar Headquarters Building, Shenzhen  
深圳海王星辰总部大厦
- 104 Architectural Design of Conference and Exhibition Center of Blue New District, Jimo, Shandong  
山东即墨蓝色新区会议会展中心
- 110 Architectural Design of the Exhibition Center of Lanwan Network Valley, Qingdao  
青岛蓝湾网谷招展中心
- 114 Security Project of OCT Middle School in Nanshan District, Shenzhen  
深圳市南山区华侨城中学校安工程
- 118 Security Project of Lixiang Middle School in Nanshan District, Shenzhen  
深圳市南山区荔香中学校安工程
- 122 Planning Design of International Wine Expo Center, Shenyang  
沈阳万国红酒博览中心
- 128 Conceptual Planning & Architectural Design of Ningde Residential Project, Fujian  
福建宁德项目规划建筑概念性方案设计
- 132 Architectural Design of SZPRD Golden Collar Holiday Apartment  
深圳物业集团金领假日公寓
- 136 Planning & Architectural Design of the China Union Residential Project in the 27th Sub-district of Bao'an, Shenzhen  
深圳华联宝安27区规划与建筑方案设计
- 140 Architectural Design of the Residence Garden in the North of CIMC Marine Engineering Research Institute, Yantai  
烟台市中集海洋工程研究院北侧地块建筑概念设计
- 144 Architectural Design of Microsoft Comtech Office Building  
深圳微软科通大厦建筑方案
- 150 Overall Planning, Phase I Engineering and Landscape Design of the Chinese University of Hong Kong (Shenzhen)  
香港中文大学(深圳)整体规划、一期工程设计及景观设计
- 158 Shuibei Jewelry Headquarters Building, Shenzhen  
深圳市水贝珠宝总部大厦
- 164 Architectural Design of the Real Estate Project (Phase II) in the West Part of the Shenzhen Airport Development Zone  
深圳机场开发区(西区)二期房地产项目
- 168 Planning and Architectural Design of the CITIC Jigutian GX-01 Plot  
中信积谷田GX-01地块规划建筑方案设计
- 172 Architectural Design of the High School Affiliated to Normal College of Shenzhen University  
深圳大学师范学院附属中学高中部建设工程

#### LANDSCAPE 景观

- 180 Landscape Design of the Inner Lake Park in Shenzhen Bay  
深圳湾内湖公园
- 186 Landscape Design of Vanke Lakeside Vacation Park (North Part) in Sanya  
三亚万科湖畔度假公园(北区)景观设计
- 192 Landscape Design of 2-6 Plots of Dianchi Lakeside Garden, Kunming  
昆明滇池湖畔花园住宅2-6地块景观
- 198 Landscape Design of Xiangtai Square, Shandong  
山东祥泰广场景观
- 204 Landscape Design of Central Business Center Relocation Residence, Fuzhou  
福州中央商务区安置房景观
- 208 Landscape Design of Huidong International Plaza in Jinan, Shandong  
山东济南汇东国际广场景观





# ALIFE 2012

贵阳中天 · 未来方舟

GUIYANG ZHONGTIAN · FUTURE ARK

# GUIYANG ZHONGTIAN • FUTURE ARK COMMERCIAL COMPLEX WITH IMAX CINEMA

## 贵阳中天·未来方舟巨幕影城 商业综合体

Client : Zhongtian Urban Development Group Co., Ltd.

Location : Anjing, Yuan, Yunyan District, Guiyang

Land area: 2.3hm<sup>2</sup> (group F2)

FAR: 3.2

Building area: 102 800m<sup>2</sup>

Height: 100m

Function: apartment, commerce, cinema

Under construction

客 户：中天城投集团股份有限公司

位 置：贵阳市云岩区渔安安井片区

用地面积：2.3hm<sup>2</sup> (F2组团)

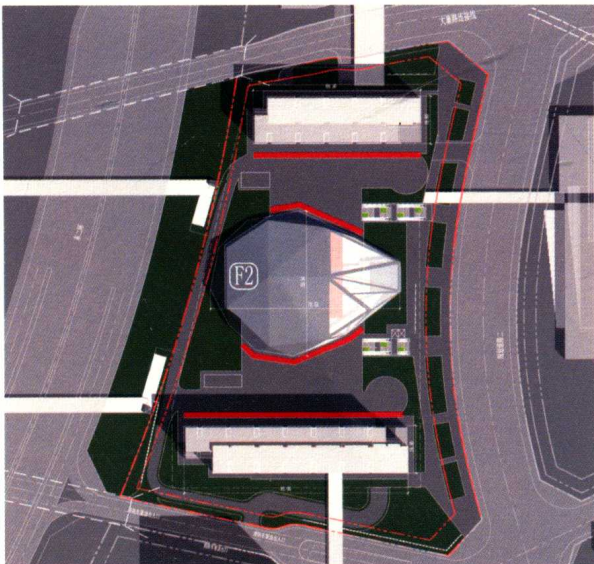
容 积 率：3.2

建筑面积：10.28万m<sup>2</sup>

建筑高度：100m

主要功能：公寓、商业、影院

在建项目

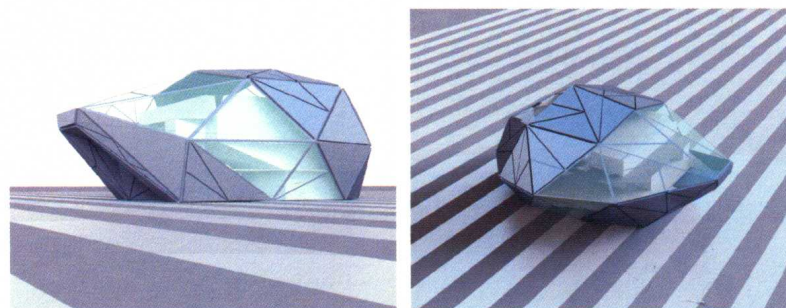
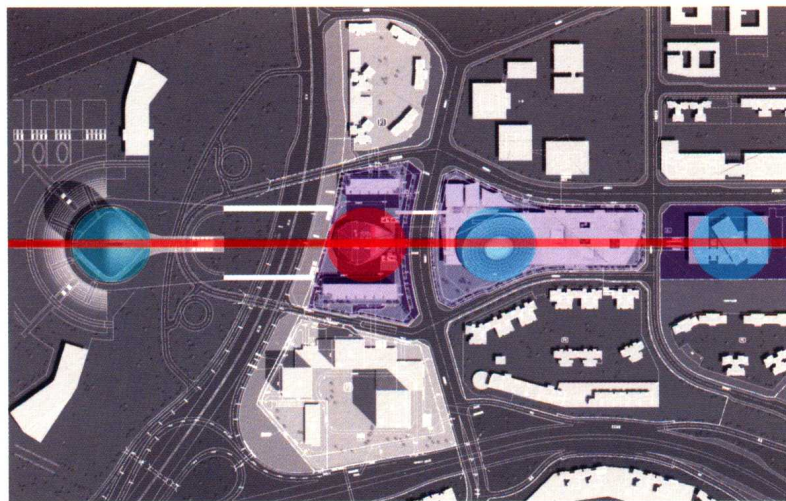


As an important part of Future Ark's 5km-long main axis, Group F2 is much emphasized in architectural space and modeling design. As for its core building, an IMAX cinema, designers draw inspiration from one of the 18 local wonders in Guizhou, i.e. Rocks touch the sky. With stones of Guizhou characteristics sculpted and located on towering platforms, the cinema enjoys a unique appearance of futurism and fashion.

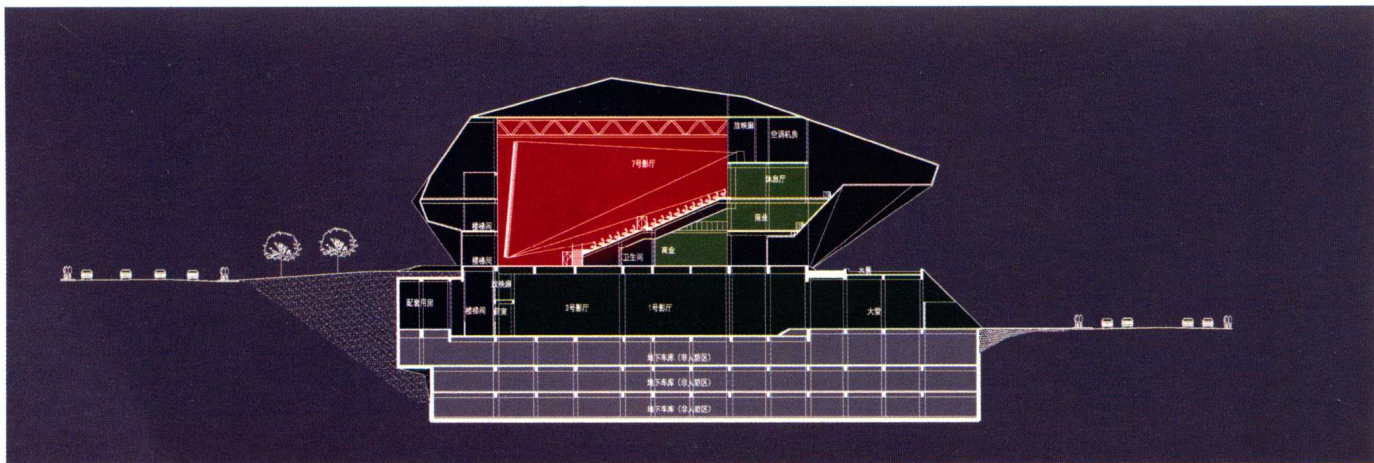
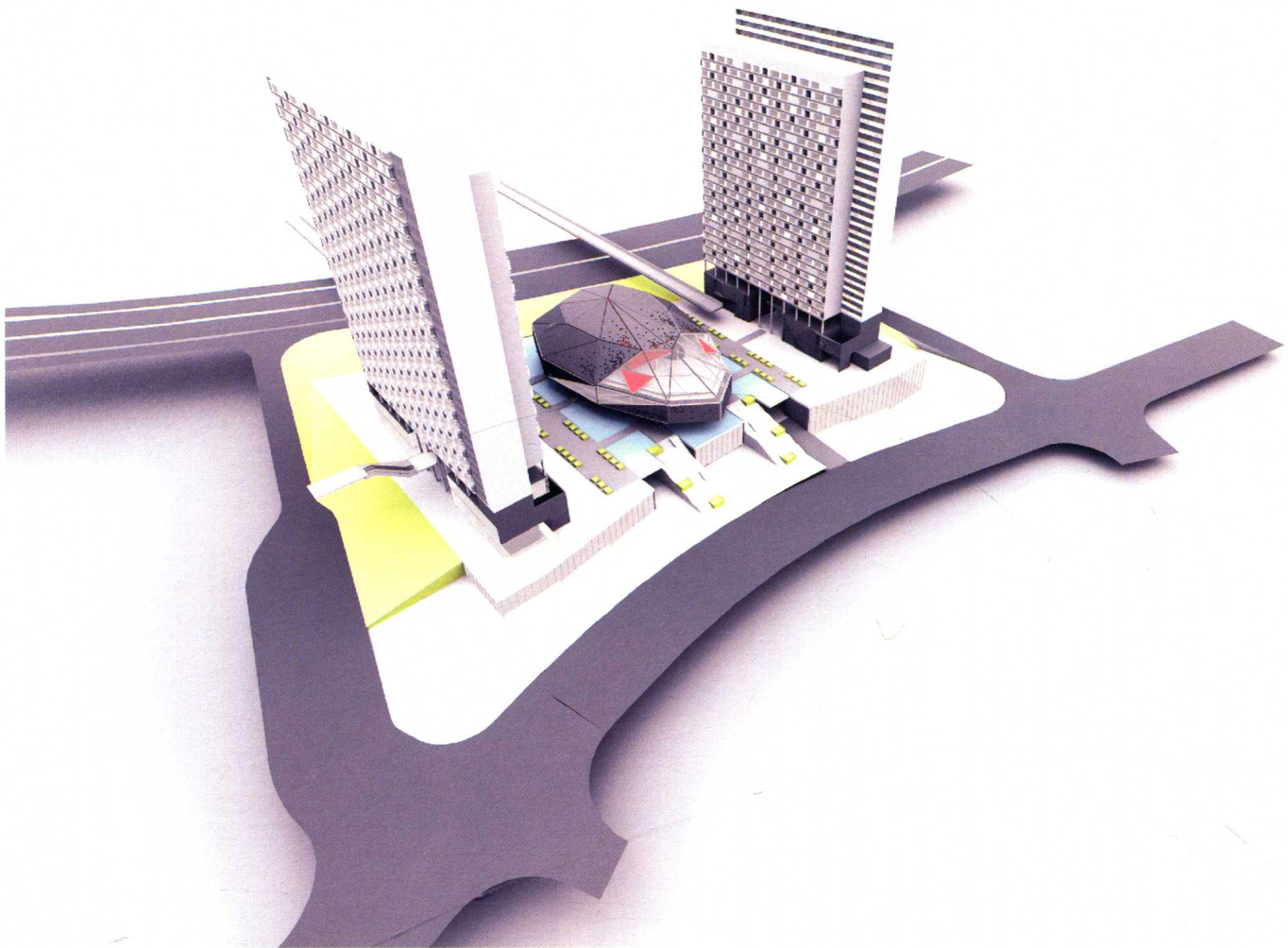
Simple and elegant, both high-rise commercial apartments on both sides of the cinema are designed like public buildings in appearance so as to highlight the magnificence and importance of stones.

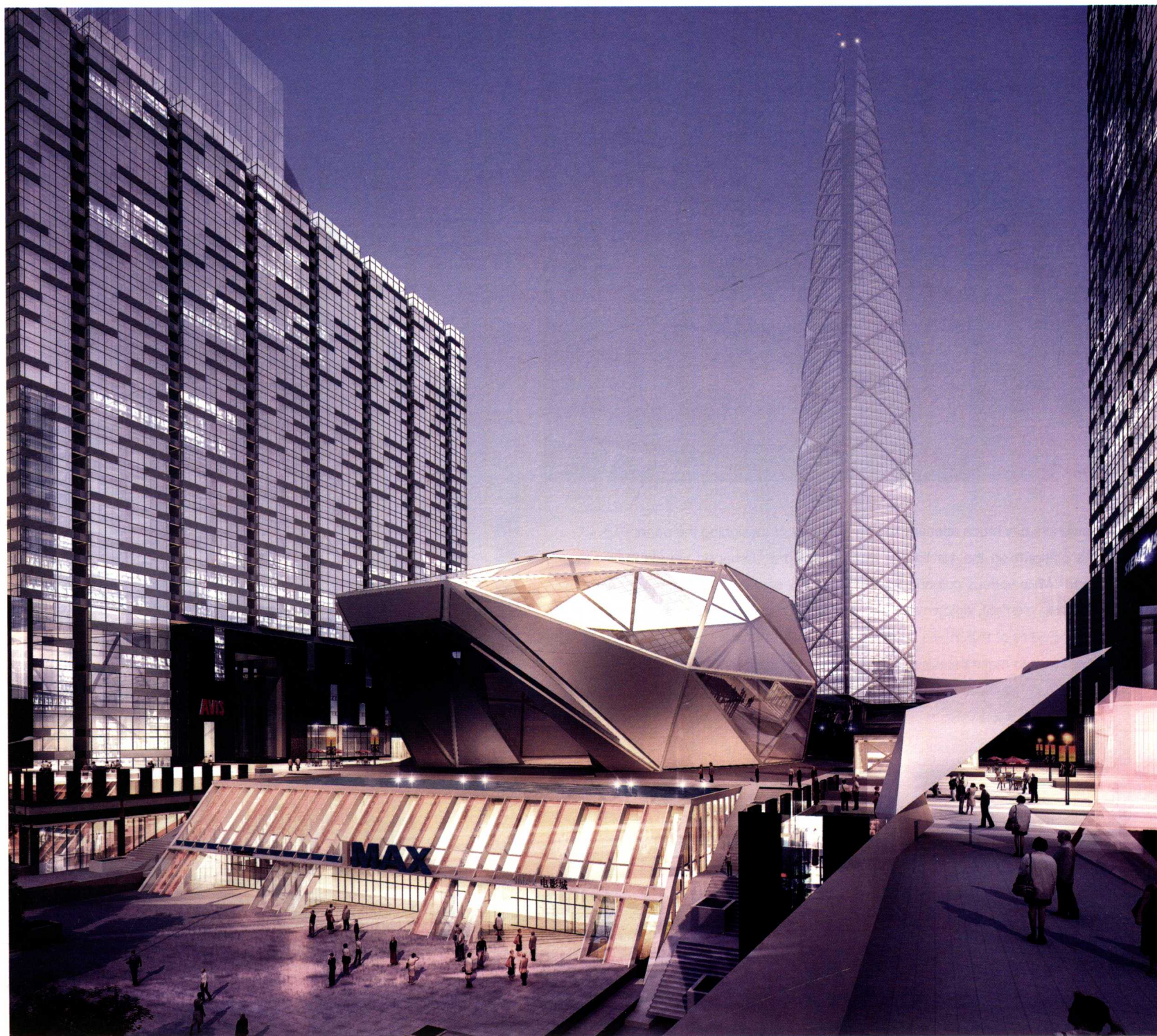
F2组团作为未来方舟项目五公里城市主轴上的重要节点，其建筑空间和造型设计尤其重要。IMAX影城作为该片区的核心建筑，其形态概念源于贵州当地的地理风物——贵州十八怪之一的“石头长在云天外”。影城形象采用石头这一富有标志性色彩的贵州元素，将石头置于架高的平台之上，对石头加以建筑化的抽象雕琢，形成具有未来感和时尚感的独特造型。

IMAX影城两侧的两栋高层商业公寓在形态设计上趋于公建化，简洁轻巧，以突出“石头”的厚重感和重要性。



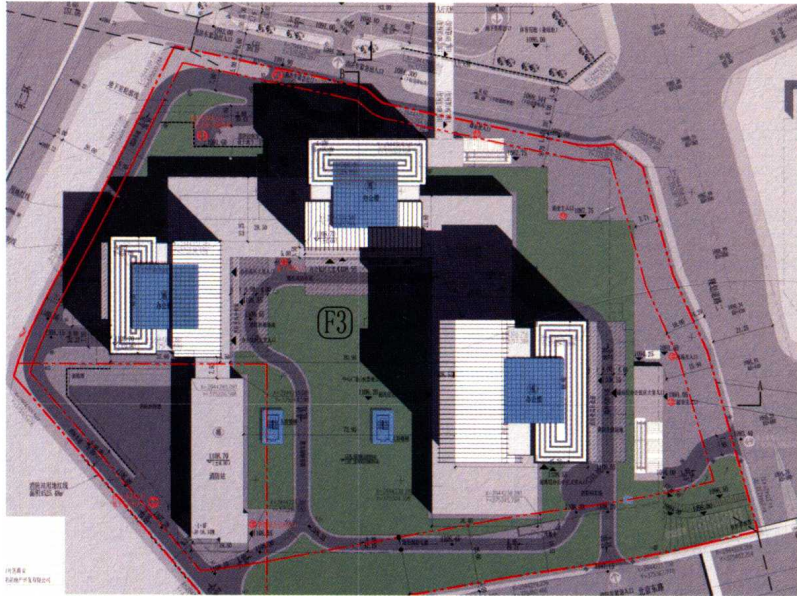






## GUIYANG ZHONGTIAN · FUTURE ARK GROUP F3

贵阳中天·未来方舟F3组团



Designers pay much attention to three parts when designing the portal:

The platform on the 1st floor is designed into a U-shaped square facing Beijing Road. While various colonnades made of grey stone are incorporated as the main modeling element, which make the semi-closed square seem more solemn.

As for bodies of the 3 towers, unit-typed curtain walls are adopted and their straight lines seem to make the towers higher.

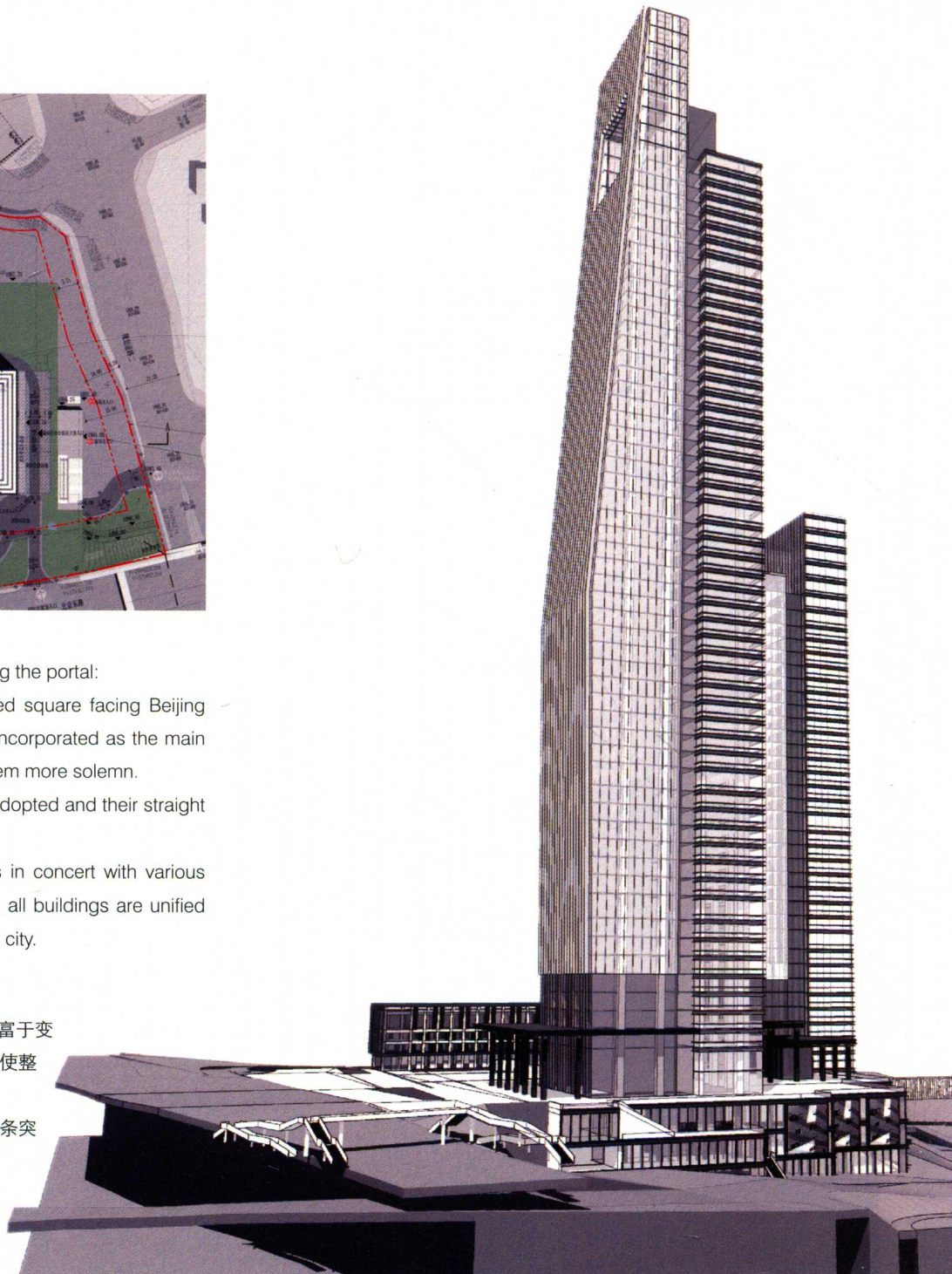
As for tops of the 3 towers, dynamic modeling elements in concert with various skylines are adopted to create a sense of wholeness and all buildings are unified and stand in harmony, revealing its image as a portal to the city.

本设计从三个部分考虑门户意向的打造：

首层平台采用U形广场，面对北京路向城市开放，将统一且富于变化的柱廊空间作为主要的造型手法，辅以深灰色高档石材，使整个建筑群半围合的入口广场更协调统一。

三幢塔楼的塔身部分采用单元式幕墙体系，简洁利落的直线条突出建筑体量的挺拔和高耸感。

三幢塔楼的顶部以具有动态的造型元素塑造整体感，与丰富的天际线相互呼应，整个建筑群统一和谐，从不同的角度向城市传递着门户的标志性形象。



Client: Zhongtian Urban Development Group Co., Ltd.

Location: Anjing, Yu'an, Yunyan District, Guiyang

Land area: 3.49hm<sup>2</sup>

FAR: 7.29

Building area: 366 000m<sup>2</sup>

Height: 150m 300m

Function: office and commerce

客 户：中天城投集团股份有限公司

位 置：贵阳市云岩区渔安安井片区

用地面积：3.49hm<sup>2</sup>

容 积 率：7.29

建筑面积：36.6万m<sup>2</sup>

建筑高度：150m 300m

主要功能：办公、商业



