

DISCOVER DETAILS IN

RESIDENCE

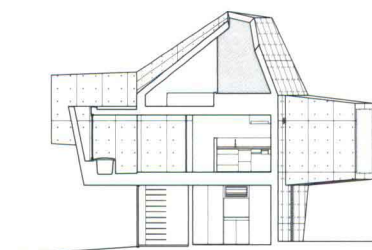
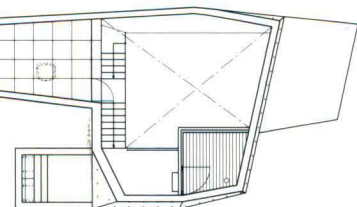
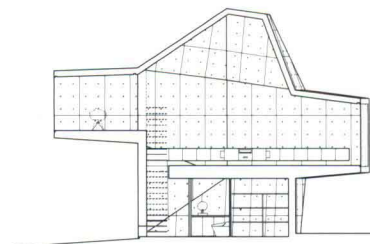
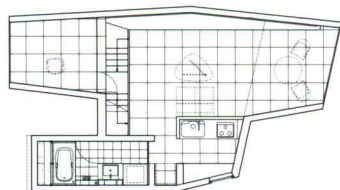
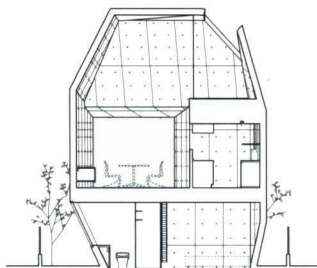
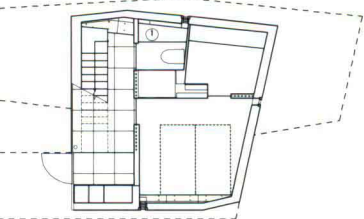
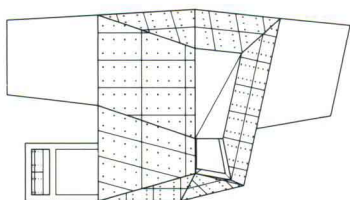
THE MOST GENUINE HOUSING DESIGNS FROM JAPAN

居住发现**细节**

——日本最真住宅设计

天濤国际出版集团 策划

李 丹 石大伟 编



江苏人民出版社

DISCOVER DETAILS IN

RESIDENCE

THE MOST GENUINE HOUSING DESIGNS FROM JAPAN

居住发现**细节**

——日本最真住宅设计

天瀚国际出版集团 策划
李 丹 石大伟 编

江苏人民出版社

图书在版编目 (C I P) 数据

居住发现细节 : 日本最真住宅设计 : 汉、英 / 李丹, 石大伟编. -- 南京 : 江苏人民出版社, 2012. 2

ISBN 978-7-214-07951-0

I. ①居… II. ①李… ②石… III. ①住宅—建筑设计—作品集—日本—现代 IV. ①TU241

中国版本图书馆CIP数据核字(2012)第022352号

居住发现细节——日本最真住宅设计

李丹 石大伟 编

策划编辑: 李 丹

责任编辑: 刘 焱 张 蕊

责任监印: 彭李君

出 版: 江苏人民出版社(南京湖南路1号A楼 邮编: 210009)

发 行: 天津凤凰空间文化传媒有限公司

销售电话: 022-87893668

网 址: <http://www.ifengspace.cn>

集团地址: 凤凰出版传媒集团(南京湖南路1号A楼 邮编: 210009)

经 销: 全国新华书店

刷: 深圳当纳利印刷有限公司

开 本: 965 mm×980 mm

印 张: 24

字 数: 192千字

版 次: 2012年05月第1版

印 次: 2012年05月第1次印刷

书 号: ISBN 978-7-214-07951-0

定 价: 338.00元(USD 60.00)

(本书若有印装质量问题, 请向发行公司调换)

Foreword 前言

DISCOVER DETAILS IN RESIDENCE

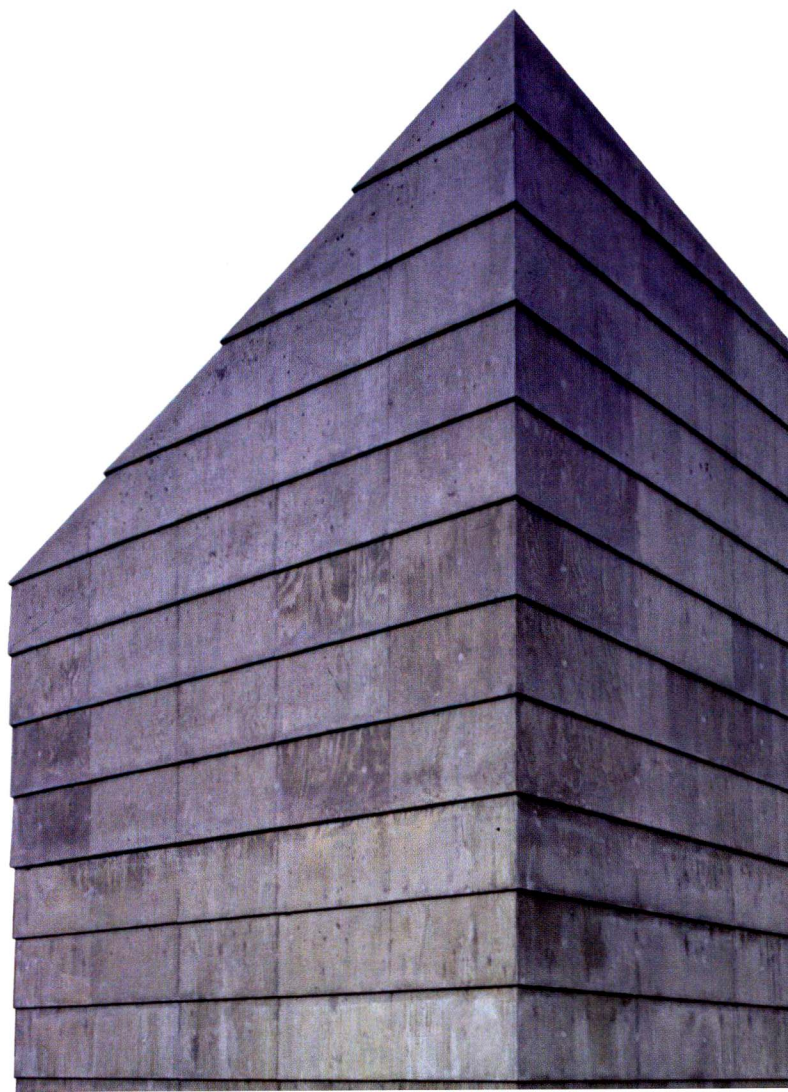
-The Most Genuine Housing Designs From Japan

日本建筑的设计风格在世界上具有独特的魅力，突出了静谧、秀丽、含蓄至极的东方特色。住宅是日本最有代表性的建筑之一，更能深刻地感受到一种东方式的抽象。本书集合精细小户型住宅，体现狭小空间中合理的布置方式，透过建筑作品看到建筑的细节设计和精致而富于变化的空间处理。方案突出日本建筑对于东方精神与禅意空间的把握，抓住人们起居的规律，重视创造宜居的室内外活动环境，并合理利用地形布置活动空间，体现以人为本的当代宜居性居所；建筑讲究空间的流动与分隔，富于变化的空间是其魅力所在，流动则为一室，分隔则分几个功能空间，空间中总能让人静静地思考，禅意无穷；精美的细节设计，细腻的结构，柔和的色调，更透露出浓郁的东方气息。

日本建筑作品不单单是设计，而是哲理和自然的结合。城市向国际化大都市迅速发展的同时，不能遗忘大自然和先祖留下的财产。在建筑设计中，日本的建筑风格和自然生态观都给予我们有益的启示。

The design style of Japanese architectures has its unique glamour in the world, highlighting such oriental characteristics as tranquil, elegant and implicit to the extreme. Housing is one of the most representative architectures in Japan, through which people feel an oriental abstractness more profoundly. This book collects many small exquisite housing designs to present the appropriate arrangements for small spaces, in which design details and delicate and variant spatial treatment are found. These projects lay stress on Japanese architectures' grasp of oriental spirit and Zen spaces, following the law of life and try to create suitable indoor and outdoor environments. In addition, the topographies are properly utilized to arrange the activity spaces, thus making them livable, people-oriented contemporary dwellings. These architectures devote particular care to the flow and partition of spaces, which are full of changes — a single room when flowing and several functional rooms when partitioned. One can always ponder quietly in the spaces and immerse into the boundless Zen world. The fantastic oriental charms find their expressions in elegant details, exquisite structures and gentle colors.

Japanese architectures are more than design works, but a combination of philosophy and nature. As the cities make massive strides towards international metropolises, the heritages of ancestors and nature shall not be forgotten. In Japanese architectural designs, both the architectural style and ecological perspective give us beneficial enlightenments.



CONTENTS

006/ INSIDE OUT
内外一体

012/ MUR
MUR住宅

018/ EDGE
EDGE 公寓

026/ VISTA
远景住宅

032/ SAKURA
樱花宅院

038/ SLIDE HOUSE
滑梯房

044/ ROOMROOM
ROOMROOM公寓

048/ INSIDE HOUSE &
OUTSIDE HOUSE
室内和室外

056/ HOUSE IN HINO
日野的住宅

062/ HOUSE N
N住宅

066/ RAVINE
RAVINE住宅

072/ CADRE
CADRE 住宅

078/ DAYLIGHT HOUSE
日光住宅

086/ AMA
爱知县住宅

094/ RESIDENCE IN KISHIGAWA
贵志川住宅

100/ OGAKI HOUSE
大垣房屋项目

106/ FLOW
FLOW住宅

112/ COVERD HOUSE
加盖住宅

120/ LIFT
LIFT 住宅

126/ HOUSE IN ABIKO
我孙子市住宅

134/ TRIPLEX HOUSE IN NAKANO
中野区的三联式住宅

140/ DOUGHNUT HOUSE
甜甜圈住宅

146/ HOUSE IN CHITOSE
-FUNABASHI
千岁-船桥的住宅

150/ HOUSE IN FUJI
富士的住宅

156/ HOUSE IN SHIMOKITAZAWA
下北沢的住宅

162/ HOUSE IN TOGOSHI
户越的住宅

168/ ISE O
伊势 O住宅

172/ EAVES HOUSE
长檐住宅

176/ HOUSE IN TORITSU DAIGAKU
都立大学的住宅

182/ HOUSE WITH TWO FOCAL POINTS
双焦点住宅

188/ ROOFTETUREHH
ROOFTECTURE HH公寓

194/ SHICHIRIGAHAMA T
七里滨 T住宅

200/ 44 : 63
44 : 63住宅

206/ ROOFTECTURE M'S
M' S住宅

212/ 80.84
80.84住宅



218/ ACRYLIC HOUSE
塑胶房子

224/ SMALL HOUSE
小型屋宇

228/ THE CAT HOUSE
猫的屋

234/ LAYERED HOUSE
分层房子

240/ RESIDENCE
IN MATSUGAOKA
松垣住宅

244/ RESIDENCE IN NABARI
名张住宅

250/ NEAR HOUSE
紧凑型房屋

254/ RAINY/SUNNY
雨天/晴天

260/ RECTANGLE OF LIGHT
矩形光建筑

266/ SILVER SCREEN HOUSE
银幕住宅

270/ TREE HOUSE
树屋

276/ RESIDENCE IN TSURUHARA
鹤原住宅

282/ HOUSE OF TROUGH
槽式房屋

288/ YOTSUYA TENERA
四谷住宅

294/ N-HOUSE
N形创意屋

300/ COTTAGE IN TSUMARI
TSUMARI的别墅

304/ DUPLEX HOUSE IN HIRATSUKA
平冢的双联式住宅

310/ HOUSE IN ZAIMOKUZA
ZAIMOKUZA的住宅

316/ HOUSE TOWARDS
THE CHERRY TREE
朝向樱桃树的住宅

320/ HOUSE IN CHITOSE-FUNABASHI
千岁-船桥的住宅

326/ HOUSE IN SEYA
SEYA的住宅

332/ ZEN HOUSE
禅住宅

338/ HOUSE WITH SHINING WALL
墙壁炫酷的住宅

342/ HOUSE WITH SLOPE
斜坡上的住宅

346/ K HOUSE
K形住宅

352/ HOUSE IN KURIHIRA
栗平駅的住宅

356/ PLUS
十字住宅

362/ HOUSE OF MAPLE LEAVES
枫叶别墅

368/ VILLA OVERLOOKING THE SEA
俯瞰大海的别墅

374/ CREATING A "SKELETON" THAT
OPENS ONTO THE CITY
架设通往城市的“骨架”

378/ APARTMENT IN KATAYAMA
片山公寓



DISCOVER
DETAILS IN RESIDENCE
— THE MOST
GENUINE HOUSING DESIGNS
FROM JAPAN

INSIDE OUT

内外一体

建筑师: Takeshi Hosaka

摄影师: Koji Fujii / Nacasa&Partners Inc.

项目地点: 东京

建筑结构: 木结构

占地面积: 149.59 m²

建筑面积: 59.23 m²

总建筑面积: 91.15 m²

建筑高度: 5859 mm

Architect: Takeshi Hosaka

Photographer: Koji Fujii / Nacasa&Partners Inc.

Location of the project: Tokyo, JAPAN

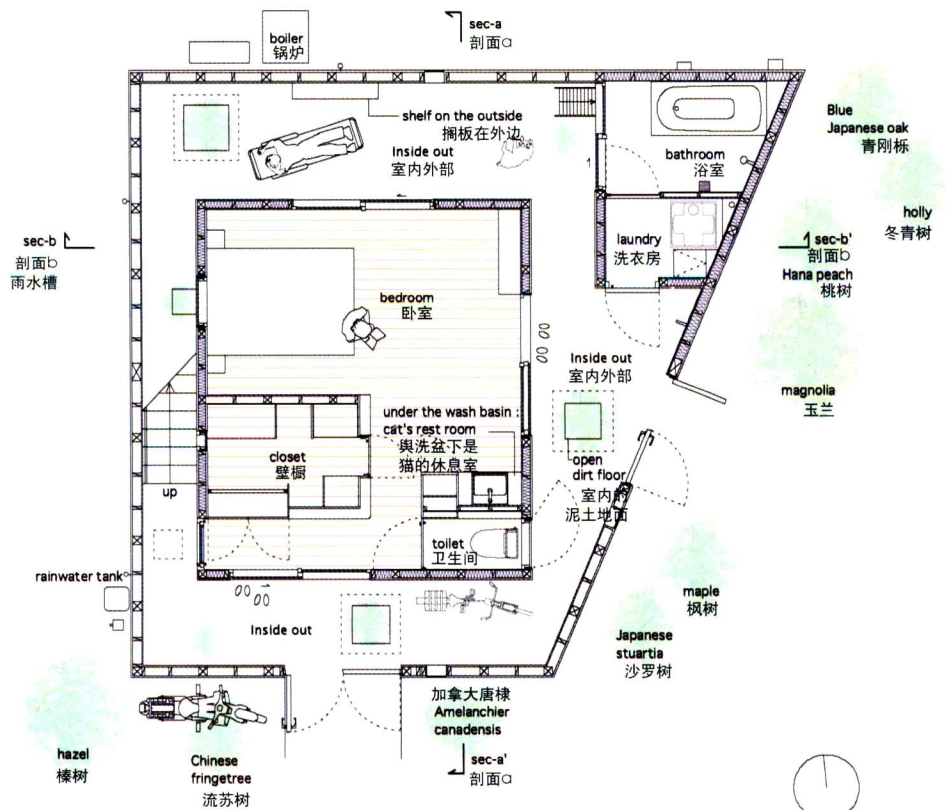
Construction nature: wooden-structure

Site: 149.59 m²

Building area: 59.23 m²

Floor area ratio: 91.15 m²

Building height: 5859 mm

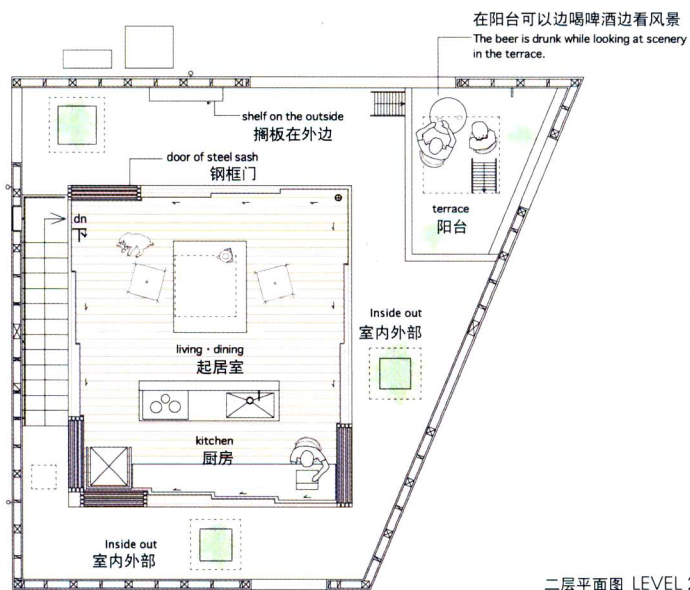


这是位于东京的一个住宅，主人是一对夫妻，他们养了两只猫。这个项目的设计思路是猫和主人共同生活在一所房子里，而不是猫住在为主人设计的房子里。这个思路引出一个概念：“身处室内，如同置身室外。”

房子设计成了不规则的四边形，与房子所处的地基保持一致。屋顶和墙壁的窗户都经过了精心设计，给阳光、风、雨留了钻进来的空。在屋顶窗户正对的空地上种了树，树也可以得到雨水的滋润。卧室和浴室的储藏室安装在室外。

在室内，有一块阳光、风、雨可以直接到达的区域，使你感到如同置身室外。因此，生活方式也会因天气而改变。但是在这里生活，你总能以积极的态度去发现生活的另一面。雨水降落在地面的范围也会根据风向而改变，所以你需要寻找不被淋湿的角落。随着住得时间越久，你会发现：一方面是雨水降落的范围，另一方面是家具、物品和自己之间的各种关系。



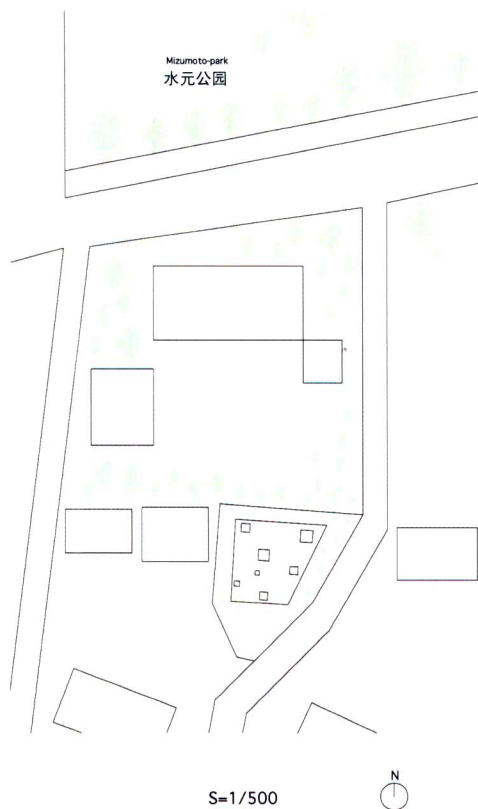


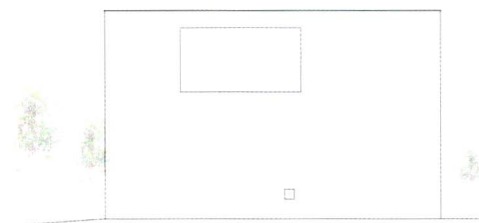
二层平面图 LEVEL 2

Inside Out

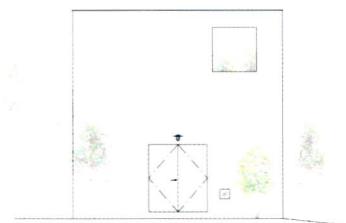
This is a project of a house for a married couple and two cats, located in Tokyo. The project had started based on the idea that humans and cats live in a same house, rather than cats living in a house designed for humans and finally this idea brought out a concept: "a house inside which you feel being outside."

The shape of the building was decided as an irregular quadrangle in accordance with the irregularly-shaped quadrangular site. The roof and wall sides of the volume have carefully designed openings, through which light, wind or rain could enter into the building. Plants are planted in the ground under the roof opening which allows rain to enter in. The boxes for bedroom and for bathroom are put in the outer volume; and a living room is located above the bedroom box and a deck above the bathroom box.

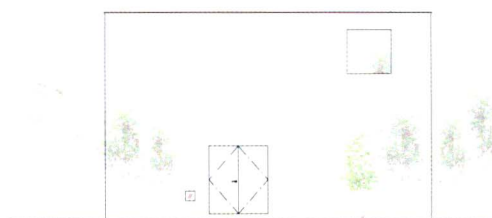




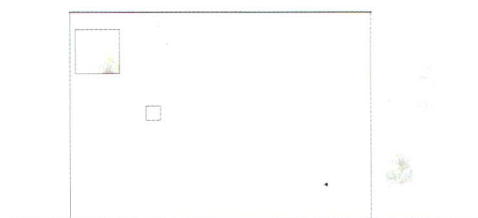
北立面图 NORTH ELEVATION



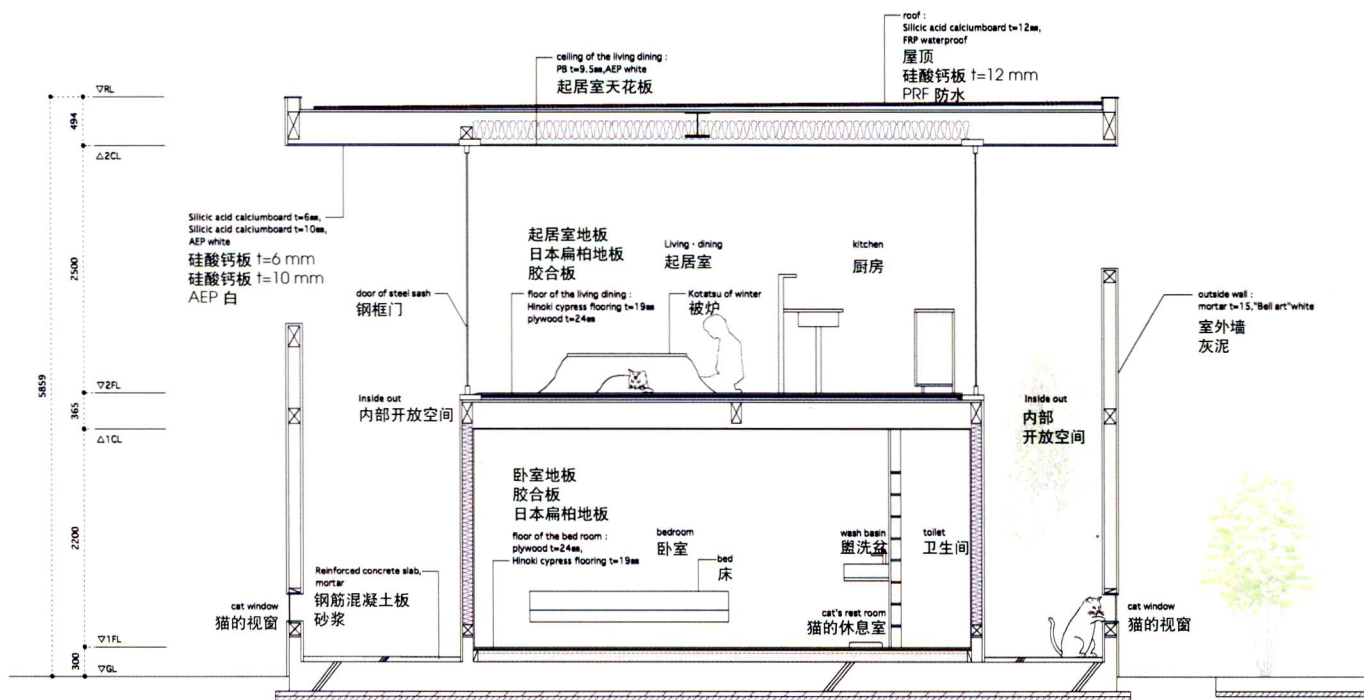
南立面图 SOUTH ELEVATION



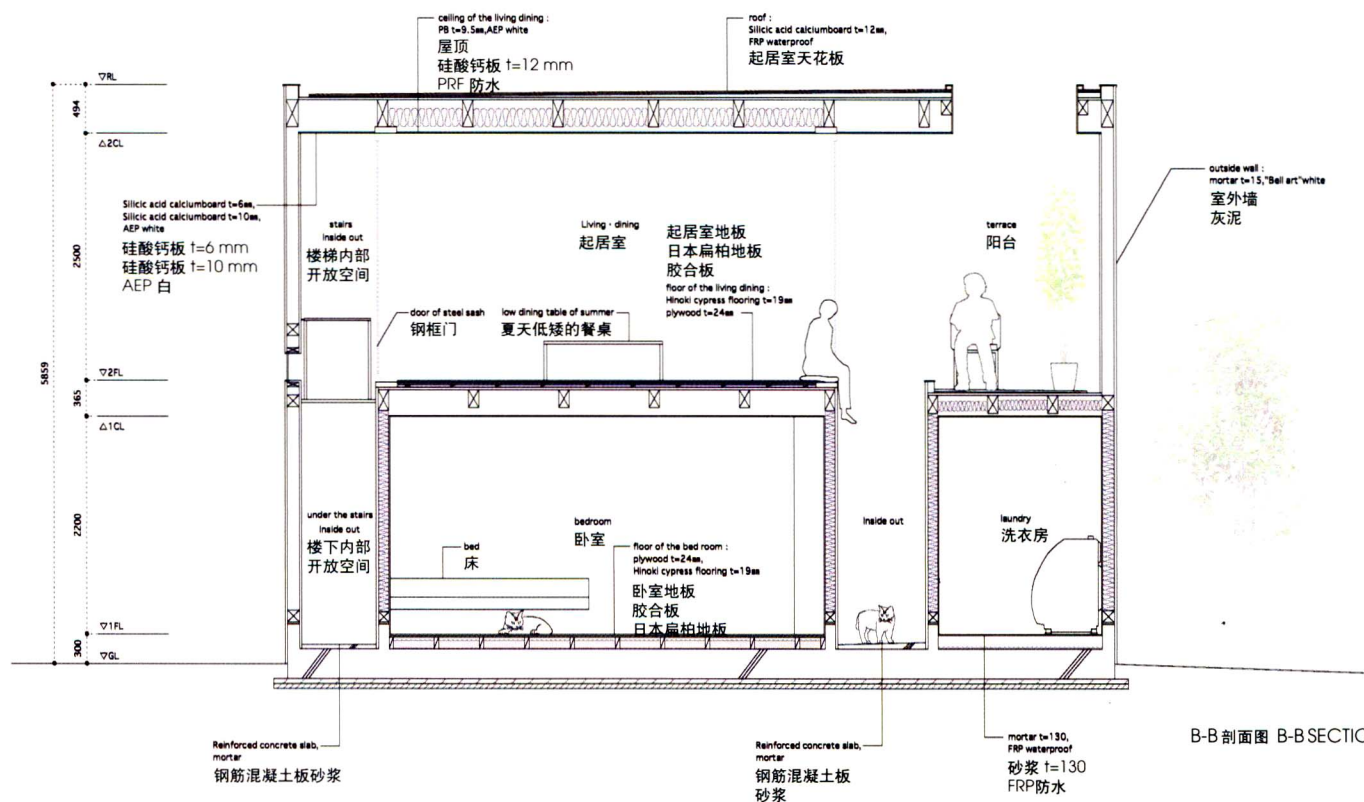
东立面图 EAST ELEVATION



西立面图 WEST ELEVATION



A-A 剖面图 A-A SECTION



B-B 剖面图 B-B SECTION

MUR

MUR住宅

建筑师：小智黑崎/阿波罗建筑联合公司

地点：神奈川县横浜市保土谷区

主要用途：私人住宅

结构：木质

基地面积：276.64 m²

总楼面面积：80.39 m² (一楼80.39 m²)

结构工程师：Kenta Masaki

机械工程师：Zennei Shimada

摄影：Masao Nishikawa

外部装饰：丙烯酸艾默生油漆

楼层装饰：一楼为实木地板、地砖

墙壁：灰泥

天花板：灰泥

Architecture: Satoshi Kurosaki/APOLLO Architects & Associates

Location: Hodogaya Yokohama Kanagawa

Principal Use: Private House

Structure: Wood

Site Area: 276.64 m²

Total Floor Area: 80.39 m² (80.39 m²/1F)

Structural Engineer: Kenta Masaki

Mechanical Engineer: Zennei Shimada

Photography: Masao Nishikawa

Exterior Finish: Acrylic Emerson Paint

Floor: Solid Flooring&Tiled/1F

Wall: plaster

Ceiling: plaster

这座为一名单身女性设计建造的单层住宅，坐落于丘陵地带。客户要求住宅需包括一个内部庭院。其目的在于确保居住者的生活隐私和居住舒适感的同时，消除该地区海拔高度差所带来的影响。为此，建筑师为建筑的立面制作了模型，将其设计为一个简洁的盒子，其周围被墙体所环绕。

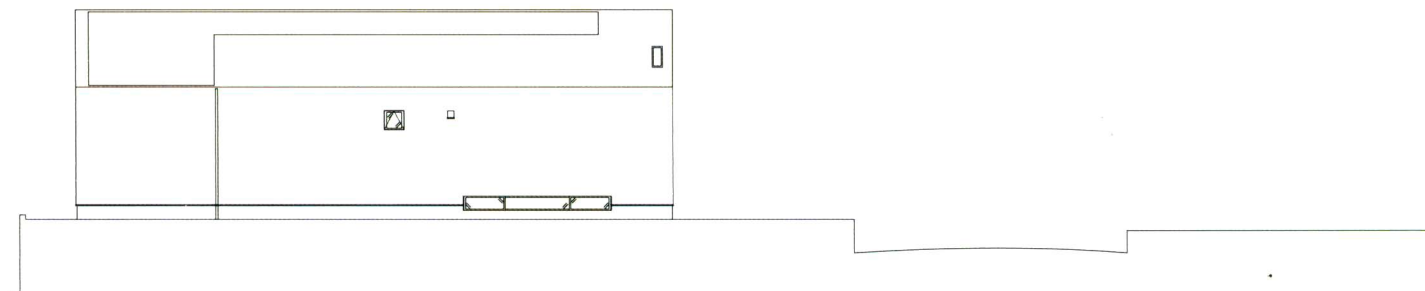
为了避免将室内变成一个单调空间，建筑师赋予每一个必要的构件以“故事性”。打开房门即可看到院落的一部分。这个院落越过狭窄的窗户向前方延伸。一道玻璃入口门立于狭长门廊的尽头。而顶部的天窗则确保室内充满了柔和的光线。

住宅独特的布局使人们可以绕开狭长的小径，直达主要起居空间。与狭窄的小径相比，这个空间更为开阔。打开大型的滑动门，它就和内部的院落连为一体。卧室是一个小型空间，既脱离于建筑的中心区域，又与之相统一。同时，它还通过后院与更衣室相连接。尽管所有的居住空间均毫无例外地面朝外部，但建筑仍保持了一定的隐私度。

两个不同的空间和两个花园之间形成了细微的横向偏差：建筑师仅凭一系列简单的手法就营造出了复杂而微妙的内部空间。建筑简易的外观使之免受外部环境的影响，而建筑内部则蕴含了独特而复杂的世界观。这种设计催生了多样的惊喜，精确地揭示出了建筑师所要表达的“故事性”实质——在寻常的生活和非凡的生活中均能够培养新奇的意识，这才是真谛之所在。

东立面图 EAST ELEVATION

西立面图 WEST ELEVATION



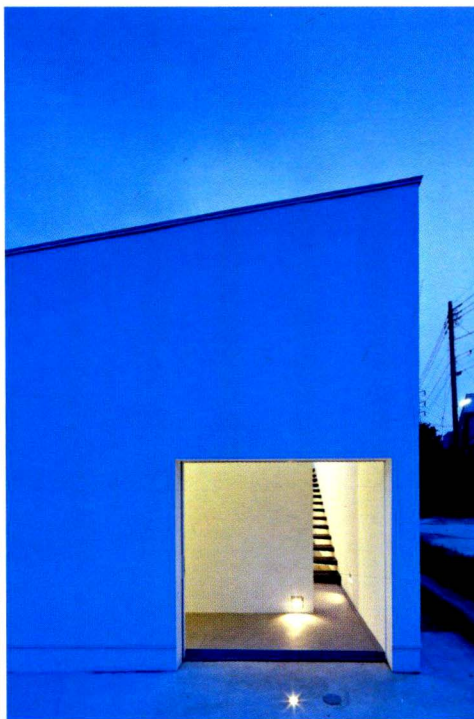
北立面图 NORTH ELEVATION

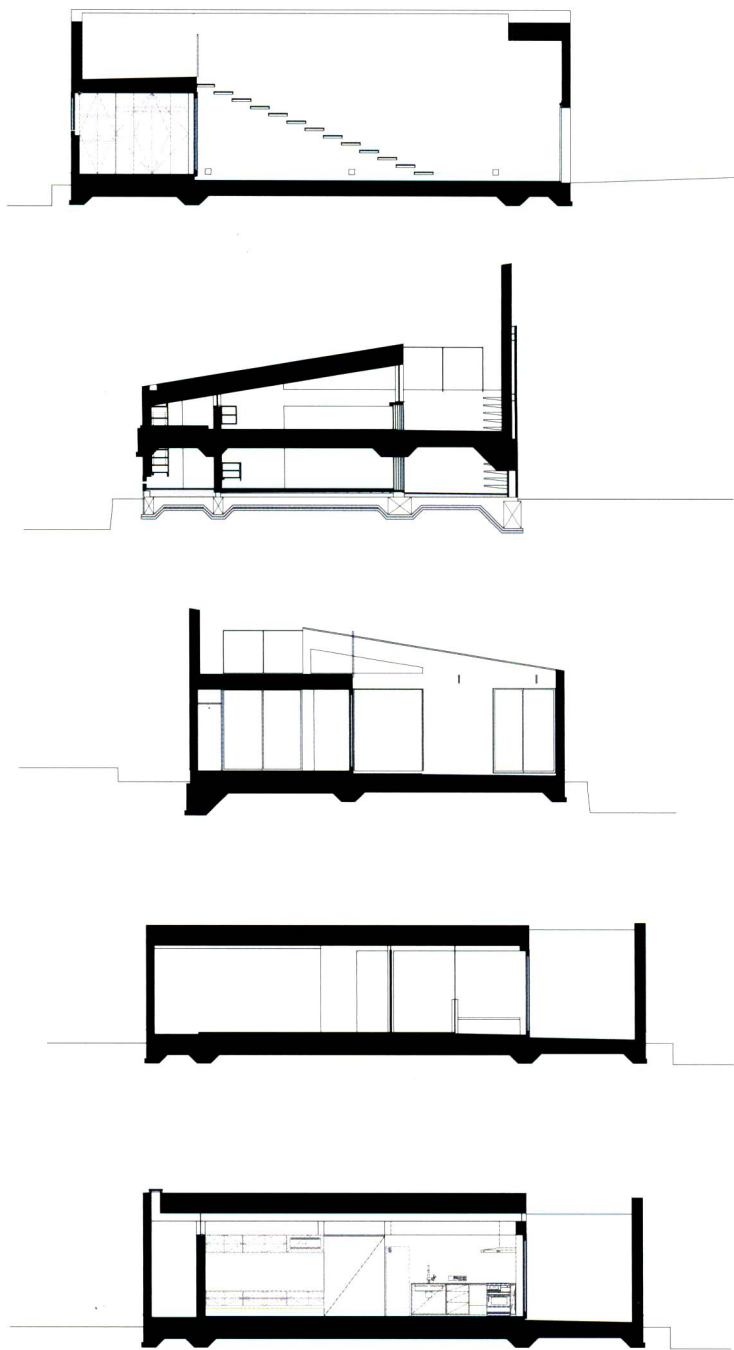
This one-storey residence for a single woman is located in a hilly area. The client requested a house with an internal courtyard that would eliminate the differences in elevation throughout the site while ensuring a sense of privacy and comfort. In response, we decided to model the facade after a simple box encircled by the walls of the building.

In order to prevent the interior from becoming just a simple one-room space, we considered each of the necessary components to be a "story". Opening the door reveals a partial glimpse of the private courtyard that extends beyond the slender window in front of you. A glass entrance door stands at one end of the long, narrow porch, while the skylight at the top fills the interior with a soft, gentle light.

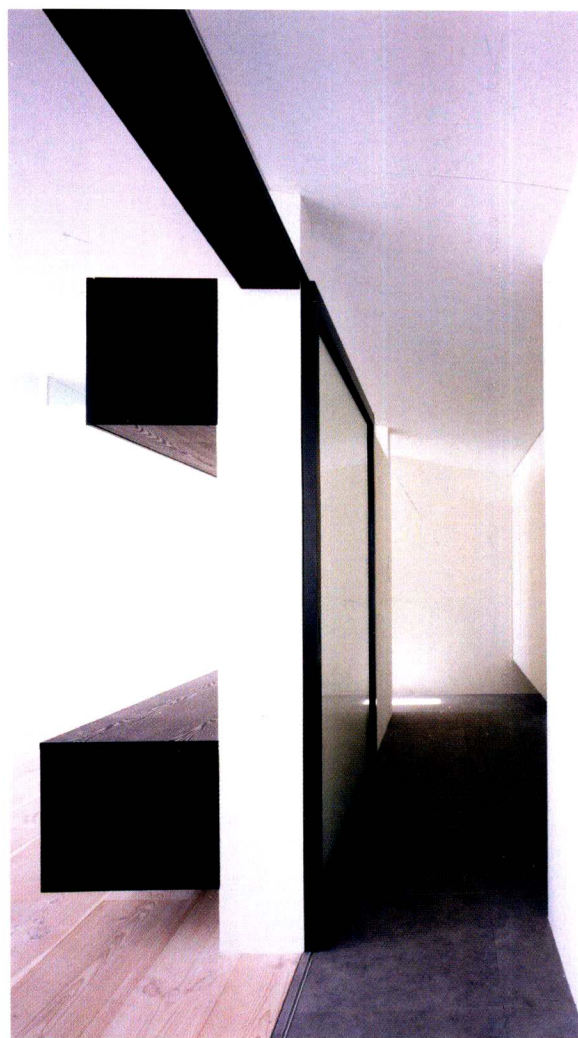
The house is laid out in such a way that you can bypass and go around the long, narrow alley to arrive at the main living area. In contrast with the dimensions of the alley, this voluminous space can also be integrated with the internal courtyard when the large sliding door is opened. The bedroom, a small breakaway space that lines up with the large central portion of the building while being detached from it, also connects to the backyard, which is itself linked to the dressing room. All of these living spaces were designed to invariably face the exterior while also ensuring a certain level of privacy.







剖面图 SECTION



Two different spaces and two gardens, laid out with a slight lateral deviation between them: a complex, nuanced interior was created just using a series of simple manipulations. In contrast to the simple facade that resists being influenced by the exterior environment, a unique, individual and complex worldview takes shape within the interior of the house. The manifold surprises that emerge from this process are precisely the essence of the "narrative" that we tried to create—the key to coaxing fresh perspectives out of both everyday and extraordinary life experiences.